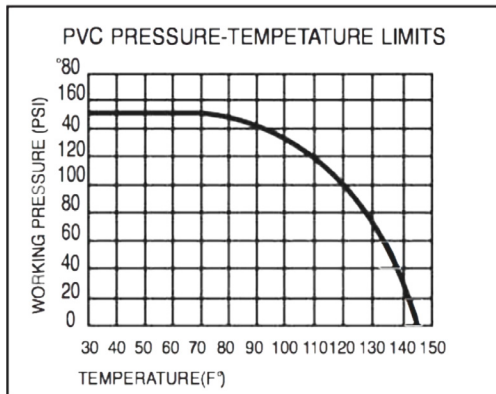
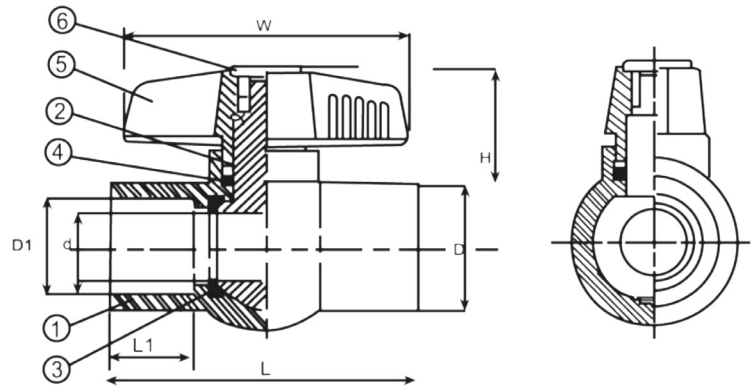


## 400/401 Series PVC Ball Valve, NPT or Socket



### SPECIFICATIONS

- 150 PSI
- LARGE PORT OPENING
- FOR USE WITH SCHEDULE 40 OR 80 PIPE
- QUARTER TURN OPEN OR CLOSED
- THREADED ENDS COMPLY WITH ANSI B1.20.1
- SOLVENT ENDS COMPLY WITH ASTM D2466
- TEMPERATURE: 73°F MAX.



### COMPONENTS

NO.	PART	QTY	MATERIAL
1	BODY	1	PVC
2	ONE PIECE BALL & STEM	1	PVC
3	SEAT	2	PTFE
4	O-RING	1	EPDM
5	T-HANDLE	1	PVC
6	CAP	1	ABS

### MEASUREMENTS

(INCHES)

SIZE	d2 SOCKET	d1 THREAD	d	L1	L	W	H	D	TEST PRESSURE
1/2"	0.84	NPT 1/2	0.56	0.87	3.07	2.73	1.83	1.24	225 PSI
3/4"	1.05	NPT 3/4	0.73	1.00	3.58	3.11	2.04	1.51	225 PSI
1"	1.32	NPT 1	0.94	1.15	4.25	3.89	2.55	1.76	225 PSI
1 1/4"	1.66	NPT 1 1/4	1.17	1.27	4.80	4.40	2.81	2.14	225 PSI
1 1/2"	1.90	NPT 1 1/2	1.33	1.37	5.37	4.40	2.93	2.37	225 PSI
2"	2.38	NPT 2	1.74	1.51	5.78	5.43	3.28	2.98	225 PSI

### MEASUREMENTS

(INCHES)

SIZE	d	d1	d2	L	L1	H	W	D	NPT
2 1/2"	2.28	2.90	2.87	8.54	2.32	4.84	8.62	4.92	8
3"	2.68	3.52	3.49	9.21	2.32	5.00	8.62	5.47	8
4"	3.54	4.53	4.49	11.73	3.11	5.79	9.80	6.65	8
5"	5.04	6.65	6.61	19.49	5.83	6.77	11.81	9.33	8