

# POOL ACCESS STEPS (3-STEP)

COVER  
PLATE

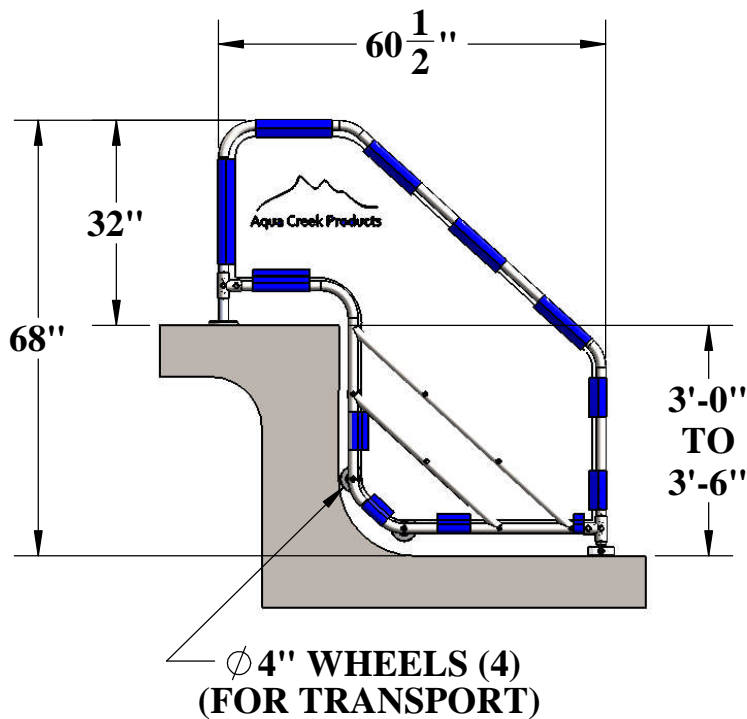
WEDGE  
ANCHOR  
(NOT INCLUDED)

SAFETY  
SIDE-PANELS

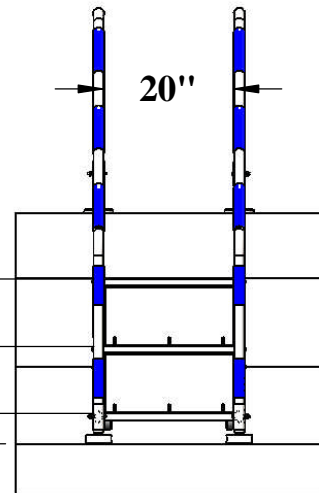
Ø 1-1/2" STAINLESS-  
STEEL TUBING (304)

NON-SLIP  
SURFACE

ADJUSTABLE  
PLASTIC-FEET



10 1/2"  
TYP



ADJUSTABLE

9889 GARRYMORE LANE  
MISSOULA, MT 59808  
(406) 549-0769  
FAX (406) 549-2602

NOTE:  
\*SPECIFICATIONS ARE SUBJECT TO CHANGE WITHOUT NOTICE

**Aqua Creek Products**  
The Total Solution for Pool and Spa Access

PRODUCT:	F-3T22	
DWG #:	F-3T22-1	
SCALE:	1:30	DATE: 6/15/15
DRAWN BY:	KR	REVISION: D

# **POOL ACCESS STEPS (3-STEP)**

## **SPECIFICATIONS:**

**FRAME MATERIAL: TYPE 316 STAINLESS STEEL**

**FINISH: EPOXY POWDER COAT, OFF-WHITE**

**SAFETY SIDE-PANELS: HEAVY-DUTY POLYESTER FABRIC**

**HANDRAIL SIZE:  $\phi$  1-1/2" OD (OUTSIDE DIAMETER)**

**POOL DEPTH RANGE: 36" TO 42" [3'-0" TO 3'-6"]**

**RISER HEIGHT: 10-1/2" (TOP THREE STEPS EQUAL, LAST STEP ADJUSTABLE)**

**ANCHORS: BRONZE,  $\phi$  1.5" ID x 4" DEEP, WEDGE TYPE (NOT INCLUDED)**

**ANCHOR SPACING: 20" APART, 18" FROM POOL WALL (SETBACK)**

**WHEELS: FOUR (4) 4" DIAMETER x 1-1/2" WHEELS, PLASTIC**

**STEP TREADS: POLYPROPYLENE, NON-SLIP SURFACE**

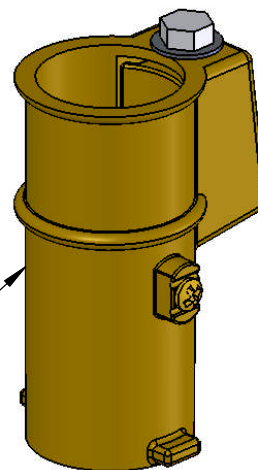
**RISER PANELS & FEET: HIGH-DENSITY POLYETHYLENE (HDPE)**

**DIMENSIONS: 60-1/2" x 24" x 68" (L x W x H), RAIL HEIGHT 32"**

**WEIGHT: 115 LBS**

**WEIGHT CAPACITY: 400 LBS**

**4" WEDGE ANCHOR ASSEMBLY  
(SOLD SEPARATELY)**



9889 GARRYMORE LANE  
MISSOULA, MT 59808  
(406) 549-0769  
FAX (406) 549-2602

NOTE:  
\*SPECIFICATIONS ARE SUBJECT TO CHANGE WITHOUT NOTICE

PRODUCT:		F-3T22	
DWG #:		F-3T22-2	
SCALE:	1:2	DATE:	6/15/15
DRAWN BY:	KR	REVISION:	D