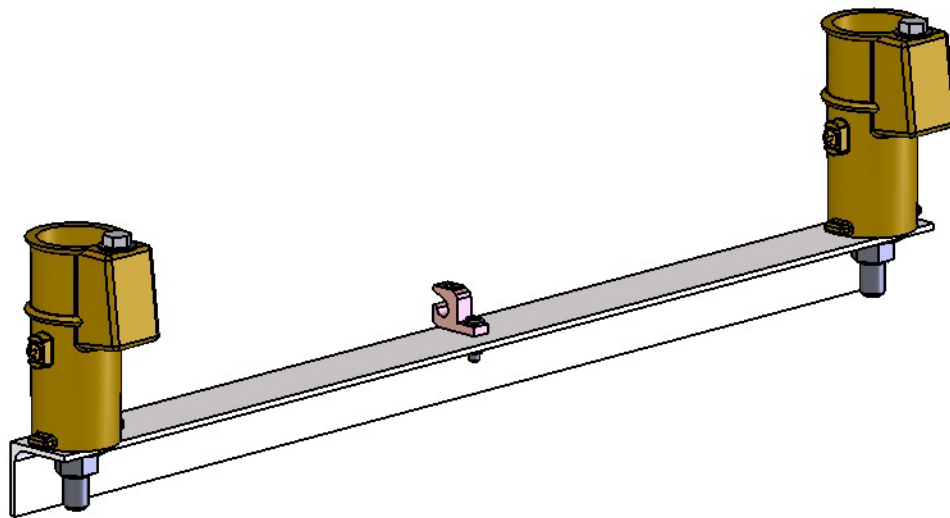




Aqua Creek Products

The Total Solution for Pool and Spa Access



INSTALLATION INSTRUCTIONS POOL ACCESS STEPS ANCHOR ASSEMBLY PART NUMBER: F-2005-22

- WARNING -

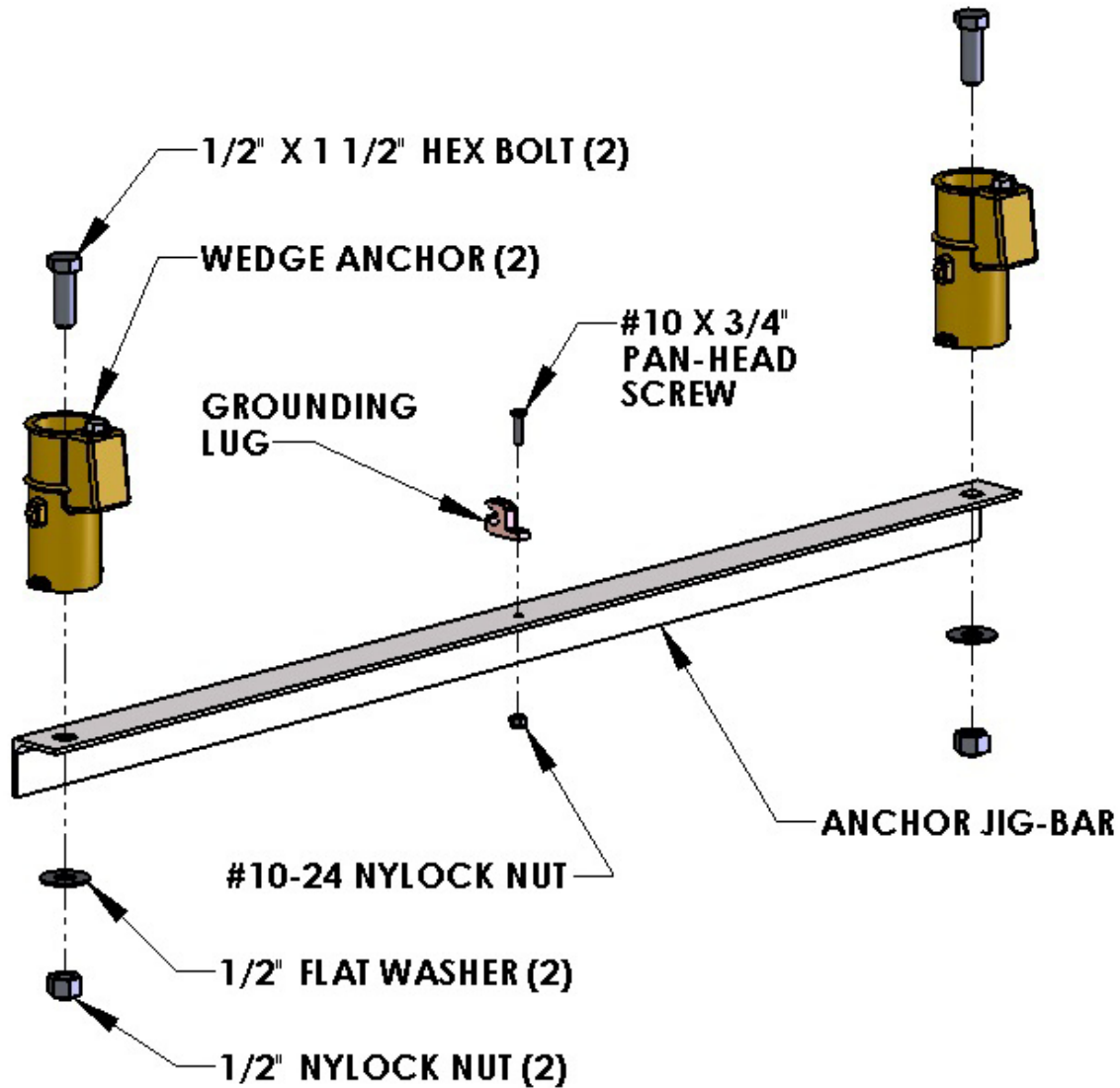
IMPORTANT SAFETY INSTRUCTIONS

1. READ AND FOLLOW ALL INSTRUCTIONS. SAFETY CAN ONLY BE ENSURED IF THE STEPS ARE INSTALLED AND USED PROPERLY – ACCORDING TO THESE INSTRUCTIONS.
2. TO REDUCE THE RISK OF INJURY, DO NOT PERMIT CHILDREN TO USE THIS PRODUCT UNLESS THEY ARE CLOSELY SUPERVISED AT ALL TIMES.
3. DO NOT PERMIT CHILDREN TO PLAY ON OR AROUND THIS PRODUCT.
4. SAVE A COPY OF THESE INSTRUCTIONS IN A SAFE AND EASILY ACCESSIBLE PLACE.

AQUA CREEK PRODUCTS
9889 GARRYMORE LANE
MISSOULA, MT 59808
1-888-687-3552
FAX: 406-549-2602

POOL ACCESS ANCHOR ASSEMBLY:

The POOL ACCESS ANCHOR ASSEMBLY will come fully disassembled. Review the diagram below to familiarize yourself with the components before beginning the installation.

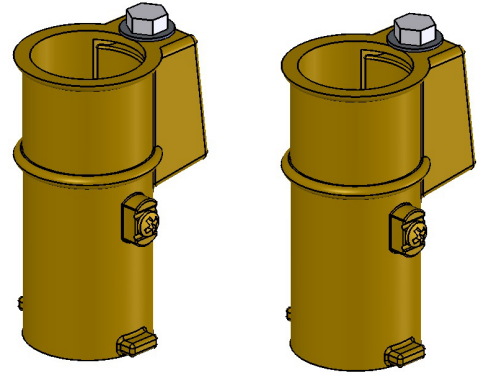


ANCHOR INSTALLATION: CORE-DRILL RETRO-FIT

NOTE: FOR DECKS 6" THICK, 2500PSI STRENGTH MINIMUM

Required Materials & Tools:

- Core drill and 3" core drill bit
- Tape Measure
- Marking Pen suitable for writing on concrete
- Hammer
- Cold Chisel
- Torpedo Level
- High Strength 2 part construction epoxy*
- Black electrical tape (Optional)
- Masking tape



**Aqua Creek recommends either Hilti™ Brand HIT RE-500-SD or Simpson™ brand SET-XP or equivalent*

- 1) Locate the two (2) wedge anchors.
- 2) Using the holes in the anchor jig plate as a template, mark the two hole locations with a marking pen on the pool deck. Verify that the **CENTER LINE** of the anchors are no more than 17-5/8 inches from the pools edge. **See FIGURE 1.**
- 3) Using the core drill and the 3" core drill bit, drill out the two hole locations marked on the pool deck to a depth of about 4-1/8".
 - a. **NOTE:** You can use black electrical tape on the end of the drill bit as a visual marker to indicate the proper depth that you need to drill to.

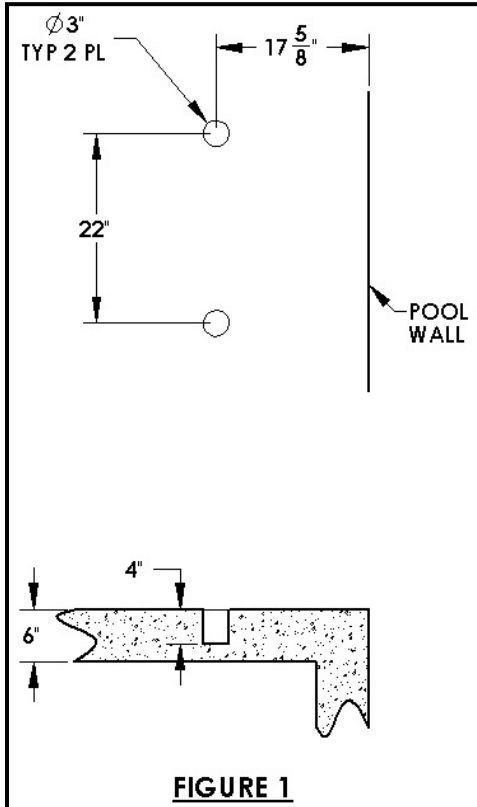


FIGURE 1

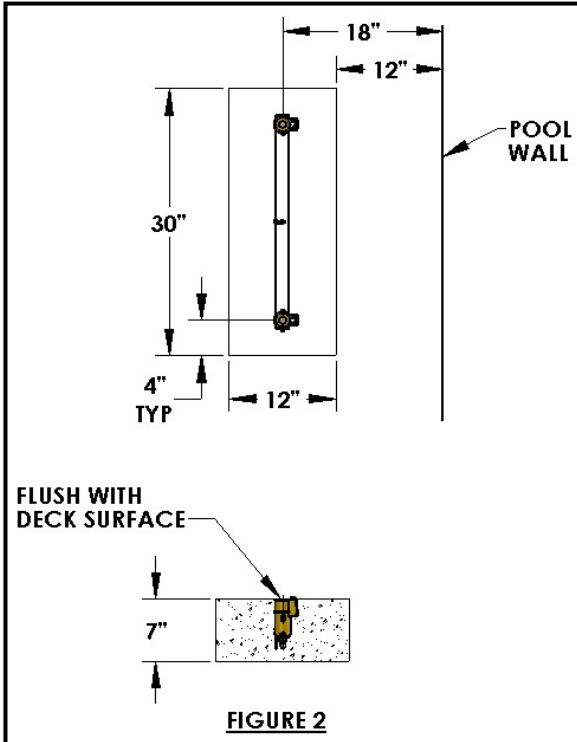
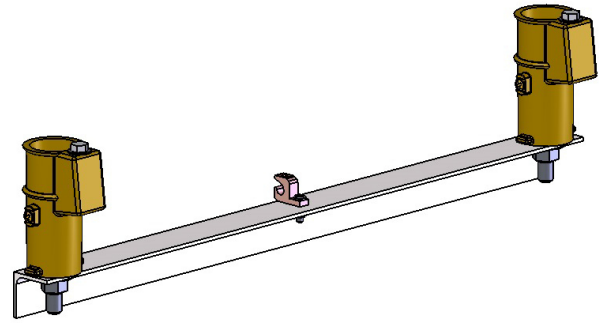
- b. **NOTE:** Depending on your local grounding requirements, you may need to drill one hole larger than the others so that you can ground at least one of the anchor inserts. In some cases saw cutting a portion of the deck out completely might be required. In this case, follow the "Saw Cutting Retro-Fit Instructions".
- 4) Remove the core from the holes using a hammer and chisel. The holes should be completely dry and clear of any debris before installing the anchors into them.
- 5) Allow for a way to bond at least one of the wedge anchors according to your local code requirements. This is typically accomplished with 8-AWG solid-copper wire attached to the pool's bonding grid. For more information see NEC Article 680.26.
- 6) Before putting epoxy into the holes and setting the anchors, you will want to test fit the anchors in the pre-drilled holes first to make sure they fit properly. If they do not fit properly you may have to enlarge your holes.
- 7) Fill holes 1/3 to 1/2 full with two part construction epoxy (not included). *Aqua Creek recommends either Hilti™ Brand HIT RE-500-SD or Simpson™ brand SET-XP or equivalent.*

ANCHOR INSTALLATION: SAW-CUT/NEW CONSTRUCTION

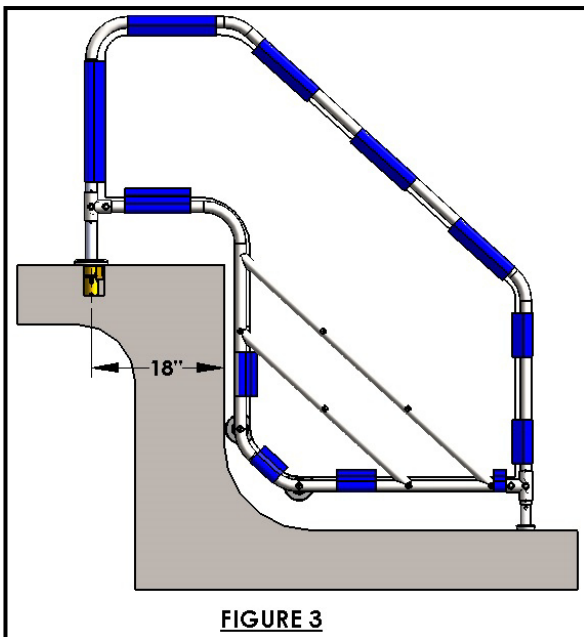
NOTE: FOR DECKS 8" THICK, 2500PSI STRENGTH MINIMUM

Required Materials & Tools:

- Concrete saw with Diamond blade
- Tape Measure
- 4' long Straight edge or chalk line
- Sledge Hammer
- Cold Chisel
- Torpedo Level
- Sting line
- Concrete & Concrete tools
- #4 Rebar



- 1) Locate the anchor jig bar, two (2) wedge anchors with nuts and mounting hardware).
- 2) Mark out a section of the pool deck that you are removing using a chalk line or straight edge and a marker. You should plan on removing at least a 30" x 12" section and at least 7" deep. **See FIGURE 2.**
- 3) Using the saw with the diamond blade, make your cuts along the lines that you marked.
- 4) Using the sledge hammer, break up the concrete within the area that you cut and remove the pieces.
- 5) After you have removed the portion of the deck, verify that your new deck will be able to be at least 7 inches deep. Remove material as necessary for 7" depth.
- 6) Install rebar in the open area of the deck. Tie the rebar into the existing deck if possible.
- 7) Set the anchor system in place making sure that the center line of the wedge anchors are 18 inches away from the pool's edge.
- 8) Bond the anchor system using the bonding lug on the anchor jig bar. The anchor should be bonded to the pool's bonding-grid according to your local code requirements. (See NEC Article 680.26).
- 9) Pour your concrete and finish the pool deck surface.



F-2005-22: POOL ACCESS STEPS ANCHOR ASSEMBLY PARTS LIST

ITEM NO.	QTY.	PART NUMBER	DESCRIPTION
1	1	PAS-2010-00	JIG BAR ANCHOR, POOL ACCESS STEPS
2	2	F-2007	ANCHOR, POOL ACCESS STEPS
3	2	BH 1/2 X 1-1/2	BOLT, 316 SS, 1/2 X 1 1/2 HCS
4	2	WF 1/2	WASHER, FLAT, 1/2, 316 SS
5	2	NN 1/2	NUT, 316 SS, NYLOCK, 1/2"-13
6	1	GBL-4DB	LUG, IN GROUND GROUNDING LUG
7	1	SPH 10 X 3/4	SCREW, 316 SS, #10 X 3/4", PHSMS
8	1	NN 10	NUT, 316 SS, NYLOCK, #10-24

