



Ball Valves - PVC Sch 80 Molded-in-Place



ISO 9002

MATERIAL SPECIFICATIONS

Body	PVC
Seat Seal	EPDM, PTFE
Ball	PVC
Stem Seal o-ring	EPDM
Handle	ABS
Bolt	Zinc Plated Steel
Cap	ABS

SCH 80 Series PVC Molded-In-Place Ball Valve Features:

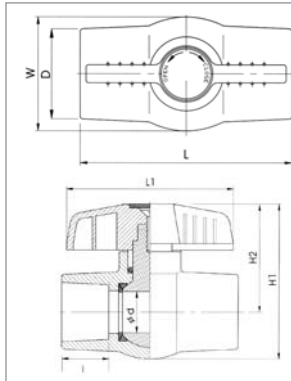
- Heavy duty thermoplastic white PVC (Type 1, Grade 1) construction. Materials meet NSF standards.
- Meets ASTM 2467 Schedule 80.
- White body, red handle.
- Available with PTFE or EPDM seats providing excellent chemical resistance.
- EPDM “o” ring stem seal
- 150 PSI working pressure at 73°F water, non-shock.
- Maintenance free compact design.
- Severe shock loads and misalignment stress are absorbed by the valve body, not the ball & seat, minimizing the chance of uneven wear & leakage.
- Individually cartoned.
- Manufactured for AGI in an ISO9002 facility.
- **Third party certified to NSF/ANSI 372.**
- Imported.



Certified to
ANSI/NSF 61 &
ANSI/NSF 61 Annex G



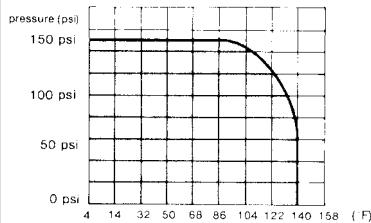
NO LEAD
< 0.25% Pb by
weighted avg
Third Party Certified
to NSF / ANSI 372



HMIP TE/SE and T/S Series IPS DIMENSIONS (IN.)

SIZE	d	D	L	L1	I	H1	H2	W
1/2"	.55	1.17	3.24	2.73	.87	2.42	1.68	1.48
3/4"	.78	1.48	3.71	3.43	1.00	3.04	2.11	1.67
1"	.98	1.76	4.13	3.90	1.12	3.63	2.54	2.22
1 1/4"	1.17	2.11	4.45	3.90	1.25	3.82	2.61	2.46
1 1/2"	1.40	2.42	5.07	4.25	1.37	4.49	3.04	2.93
2"	1.82	3.00	5.74	5.23	1.50	5.27	3.47	3.59
2 1/2"	2.34	3.59	7.96	6.94	1.75	6.24	4.10	4.29
3"	3.00	4.13	8.93	8.74	1.88	7.41	4.84	5.19
4"	3.94	5.27	11.70	10.76	2.25	9.09	5.77	6.63

Relations Between Temperature and Pressure



CV (GPM/(1 lbf/in²)^{1/2})

Opening Rate: 90°

SIZE	CV
1/2"	14.5
3/4"	29.5
1"	48.0
1 1/4"	71.0
1 1/2"	135.0
2"	180.0
2 1/2"	225.0
3"	400.0
4"	865.9

WITH EPDM SEATS



Threaded Part Number	Slip Part Number	Size	Ctn Qty	List Price
HMIP50TE	HMIP50SE	1/2"	100	\$ 5.21
HMIP75TE	HMIP75SE	3/4"	100	6.70
HMIP100TE	HMIP100SE	1"	100	9.22
HMIP125TE	HMIP125SE	1 1/4"	100	13.01
HMIP150TE	HMIP150SE	1 1/2"	48	21.08
HMIP200TE	HMIP200SE	2"	24	27.89
HIMP250TE	HMIP250SE	2 1/2"	12	60.30
HMIP300TE	HMIP300SE	3"	12	104.49
HMIP400TE	HMIP400SE	4"	6	188.22

WITH PTFE SEATS



Threaded Part Number	Slip Part Number	Size	Ctn Qty	List Price
HMIP50T	HMIP50S	1/2"	100	\$ 9.39
HMIP75T	HMIP75S	3/4"	100	12.61
HMIP100T	HMIP100S	1"	100	12.76
HMIP125T	HMIP125S	1 1/4"	100	20.22
HMIP150T	HMIP150S	1 1/2"	48	25.82
HMIP200T	HMIP200S	2"	24	35.21



In the United States: Phone (800) 776-2266 Fax (800) 729-3299
In Canada: Phone (800) 268-7570 Fax (905) 629-3204

www.americangranby.com

6/3/19

3.15