

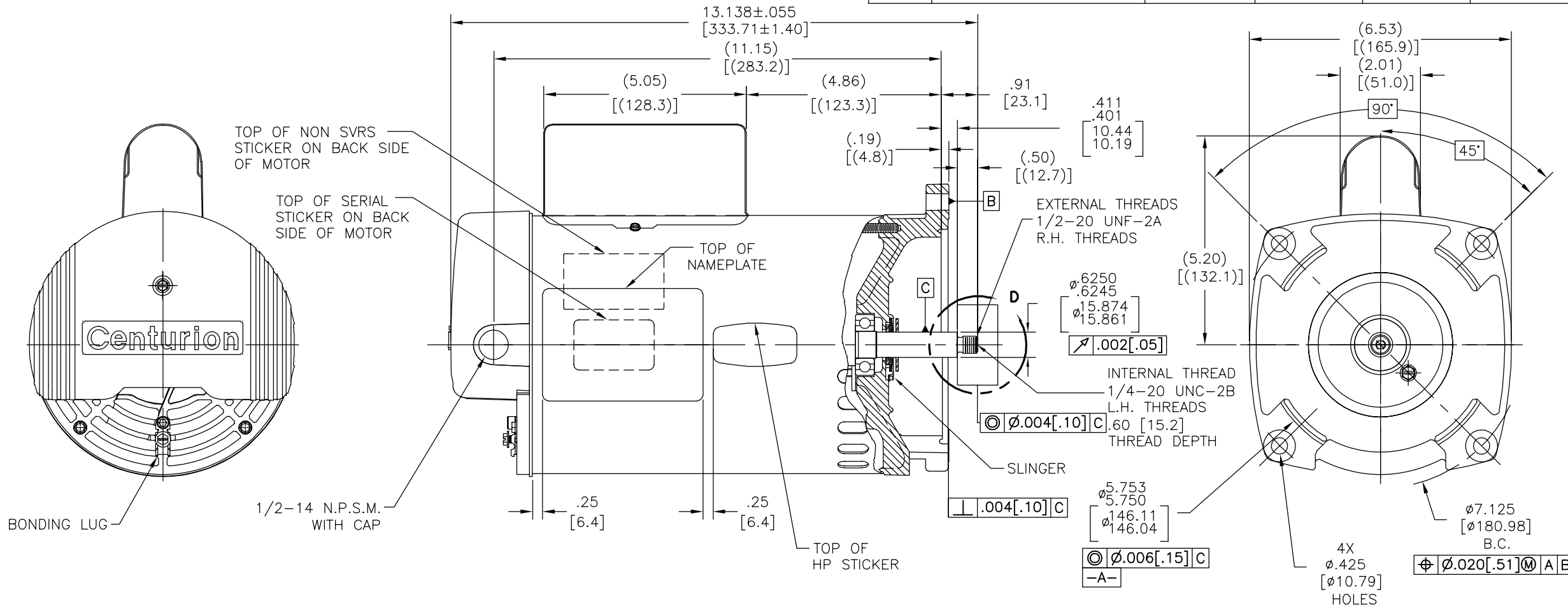
4

3

2

1

| REV | ECO | REV BY | DATE | APPD | DATE |
|-----|---------|--------|------------|--------|------------|
| G | 0028432 | R.ZHOU | 09-20-2012 | B.SHEN | 09-20-2012 |

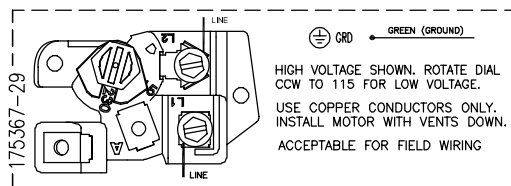


NAMEPLATE DATA

EXTERNAL CONNECTION DIAGRAM

NOTES

MODEL: 196335
CUST PN: HSQ1072
HP: .75 SF: 1.85
ROT: CCWPE
RPM: 3450
TYPE: CP CODE: E
FORM: FRAME: Y 56 Y
VOLTS: 115/208-230
AMPS:
MAX AMPS: 11.6/7.0-5.8
SF AMPS:
PH: 1 HZ: 60
INS: F AMB: 60°C
DUTY: CONT
ENCLOSURE: ODP
THERMALLY PROTECTED



- FOR THREADED SHAFT EXT. ECCENTRICITY OF THREADED PORTION OF SHAFT IS HELD WITHIN .004[.10] TOTAL GAGE READING WITH THE INDICATOR ON O.D. OF GROUND RING GAGE AS SHOWN. THE GAGE BEING STATIONARY WITH RESPECT TO THE ROTOR.
- END PLAY NOT TO EXCEED .010[.25] MEASURED WITH NO THRUST
- ALL DIMENSIONS SHOWN IN PARENTHESIS ARE REFERENCE DIMENSIONS.
- FINISH PAINT TO BE BLACK.
- GREEN GROUND SCREW LOCATED UNDER COVER TO BE INSTALLED WITH A .09[2.3] MIN. GAP FOR EASY CONNECTION.
- CONNECTED FOR 230V. DUAL VOLTAGE MOTOR. SEE CONNECTION DIAGRAM TO CHANGE VOLTS TO 115V.

PERFORMANCE CURVE

APPROVED SAMPLE

GEOMETRIC CHARACTERISTICS & SYMBOLS

UNLESS OTHERWISE SPECIFIED DIM. TOLERANCES ARE AS FOLLOWS:

DR BY:

J.HENRY

09-26-2008

REGAL

REGAL-BELOIT CORPORATION

DESCRIPTION

MODEL-CFHP-56FR
OUTLINE

SIZE

C

DWG NO

HSQ1072

SCALE

NONE

SHEET

1

□ FLATNESS
— STRAIGHTNESS
∠ ANGULARITY
⊥ PERPENDICULARITY (SQUARENESS)
// PARALLELISM
○ ROUNDNESS (CIRCULARITY)
⊙ CYLINDRICITY
△ PROFILE OF ANY SURFACE
⌒ PROFILE OF ANY LINE
⌒ RUNOUT
⊕ TRUE POSITION
◎ CONCENTRICITY
≡ SYMMETRY

ASME Y14.5M 1994

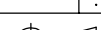
INCH .1 ±.1 .02 ±.005 ±.0005
mm ±0.5 ±0.13 ±0.013
ANG. ±.50 DEG
REMOVE BURRS & BREAK SHARP EDGES:
INCH .003-.015 mm 0.1-0.4
CORNER FILLETS TO:
INCH .020 mm 0.5
MACHINE SURFACES:
INCH 125 mm 3.2

METRIC DIMS. SHOWN IN [BRACKETS]

APPD:

.

THIRD ANGLE PROJECTION



EDS DATE 11-11-2011

FORMAT REV H

CONFIDENTIAL: THIS DRAWING AND ITS INFORMATION ARE THE EXCLUSIVE AND CONFIDENTIAL PROPERTY OF REGAL-BELOIT CORPORATION AND ARE NOT TO BE DISCLOSED, DUPLICATED, DISTRIBUTED OR OTHERWISE USED WITHOUT THE WRITTEN CONSENT OF REGAL-BELOIT CORPORATION. -ALL RIGHTS RESERVED.

4

3

2

1

4

3

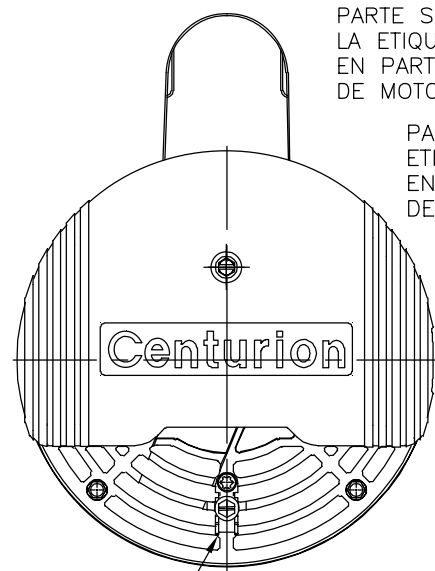
2

1

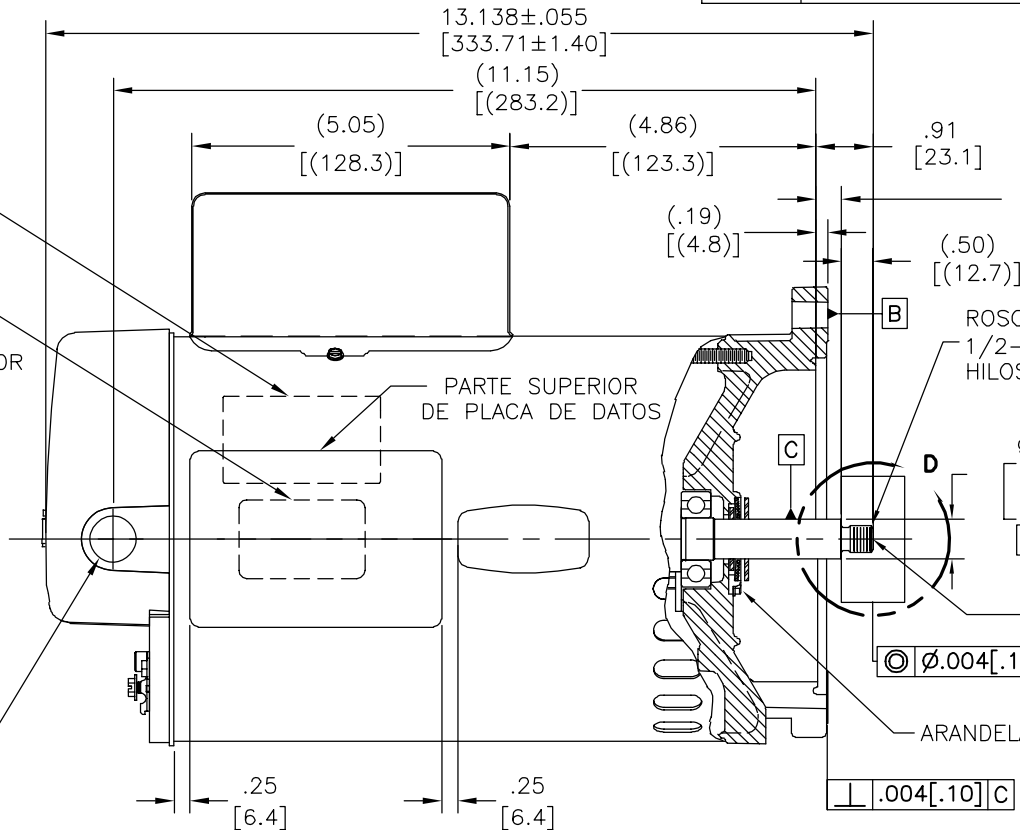
| | | | | | |
|-----------|---------|---------------|------------|---------------|------------|
| REVISION: | ECO | REVISADO POR: | FECHA: | APROBADO POR: | FECHA: |
| G | 0028432 | R.ZHOU | 09-20-2012 | B.SHEN | 09-20-2012 |

D

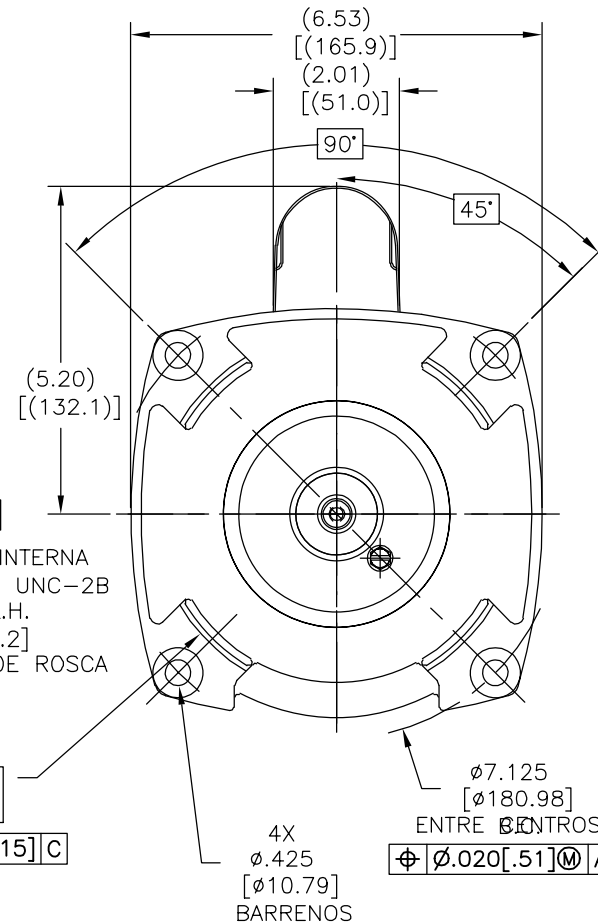
C



TERMINAL

PARTE SUP. DE
LA ETIQUETA SVRS
EN PARTE POSTERIOR
DE MOTORPARTE SUP. DE
ETIQUETA SERIAL
EN PARTE POSTERIOR
DE MOTOR1/2-14 N.P.S.M.
CON TAPONPARTE SUPERIOR
DE PLACA DE DATOSPARTE SUPERIOR DE
ETIQUETA DE CABALLOS
DE FUERZAROSCA EXTERNA
1/2-20 UNF-2A
HILOS R.H.ROSCA INTERNA
1/4-20 UNC-2B
HILOS L.H.
PROF. DE ROSCA

ARANDELA

 $\phi .6250$
 $\phi .6245$
 $\phi .15874$
 $\phi .15861$
 $\sqrt{.002[.05]}$
 $\phi .60$ [15.2]
 $\phi .006[.15]$ C
-A-

4X

 $\phi .425$

[10.79]

BARRENOS

 $\phi 7.125$
[180.98]

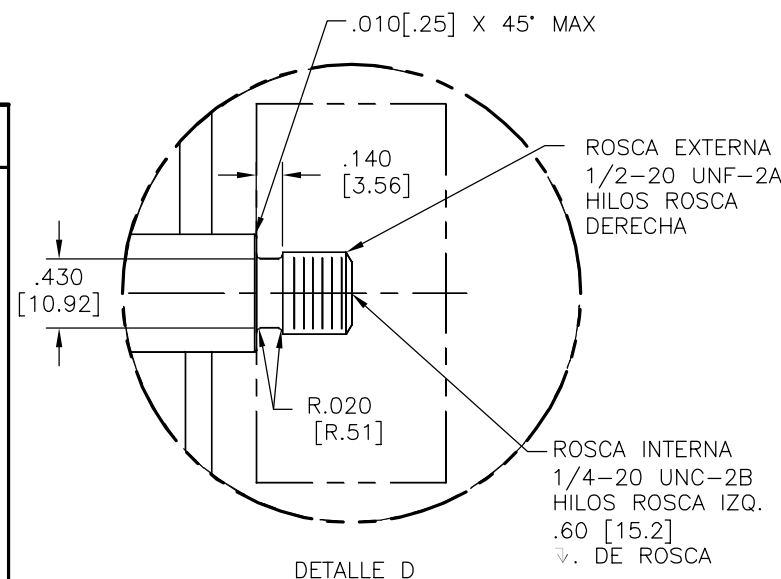
ENTRE CENTROS

 $\phi .020[.51]$ M A B

B

B

| NAMEPLATE DATA | EXTERNAL CONNECTION DIAGRAM | NOTES |
|---|--|--|
| MODEL: 196335 CUST PN: HSQ1072 HP: .75 SF: 1.85 ROT: CCWPE RPM: 3450 TYPE: CP CODE: E FORM: FRAME: Y 56 Y VOLTS: 115/208-230 AMPS: MAX AMPS: 11.6/7.0-5.8 SF AMPS: PH: 1 HZ: 60 INS: F AMB: 60°C DUTY: CONT ENCLOSURE: ODP THERMALLY PROTECTED | <p>175367-29</p> <p>HIGH VOLTAGE SHOWN. ROTATE DIAL COW TO 115 FOR LOW VOLTAGE. USE COPPER CONDUCTORS ONLY. INSTALL MOTOR WITH VENTS DOWN. ACCEPTABLE FOR FIELD WIRING</p> | 1. PARA EXT. DE FLECHA ROSCADA LA EXCENTRICIDAD DE LA ROSCA DE LA FLECHA ES SOSTENIDA DENTRO .004[.10] LECTURA TOTAL DEL ESCANTILLON CON EL INDICADOR SOBRE EL DIAM. EXTERNO DEL ANILLO DE TIERRA COMO SE MUESTRA. EL ESCANTILLON SERA ESTACIONARIO CON RESPECTO AL ROTOR. 2. JUEGO AXIAL NO EXCEDERA .010[.25] MEDIDA SIN EMPUJE. 3. TODAS LAS DIMENSIONES MOSTRADAS EN PARENTESIS SON DIMENSIONES DE REFERENCIA. 4. EL ACABADO DE LA PINTURA SERA NEGRO. 5. TORNILLO VERDE DE TIERRA UBICADO BAJO LA CUBIERTA PARA SER INSTALADA CON UNA HOLGURA DE .09[2.3] MINIMO PARA FACIL CONEXION. |



DETALLE D

A

A

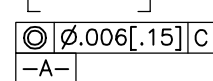
| | | | | | | |
|-------------------|-----------------|--|--|-----------------------------|--|--------------------------------|
| PERFORMANCE CURVE | APPROVED SAMPLE | CARACTERISTICAS DE GEOMETRIA Y SIMBOLOS | A MENOS QUE SE ESPECIFIQUE DE OTRA MANERA, LAS TOLERANCIAS DE LAS DIMS: SON LAS SIGUIENTES: | DIBUJADO POR: J.HENRY | 09-26-2008 | REGAL REGAL-BELOIT CORPORATION |
| | 0604250A | ✓ PLANICIDAD - RECTITUD < ANGULARIDAD ⊥ PERPENDICULARIDAD (A ESCUADRA) // PARALELISMO ○ REDONDEZ (CIRCULARIDAD) ∅ CILINDRICIDAD △ PERFIL DE CUALQUIER SUPERFICIE ∩ PERFIL DE CUALQUIER LINEA / VARIACION ⊕ POSICION REAL ◎ CONCENTRICIDAD ≡ SIMETRIA | PULG ±.1 ±.02 ±.005 ±.0005 mm ±0.5 ±0.13 ±0.013 ANG. ±50 GRADOS ELIMINAR REBABAS Y ORILLAS FILOSAS DEL BORDE. PULG .003-.015 mm 0.1-0.4 FILETEAR ESQUINA: PULG .020 mm 0.5 MAQUINAR SUPERFICIES PULG 125 mm 3.2 | APROBADO POR: | | DESCRIPCION: |
| UL COMPONENT | CSA | | | TERCER ANGULO DE PROYECCION | FECHA EDS: 11-11-2011 REV. FORMATO: H | MODEL-CFHP-56FR OUTLINE |
| FILE# | CCN# | FILE# | GUIDE# | | | TAMAÑO: C |
| E14663 | PRGY2 | LR642 | 4211-01 | | | NUMERO DE DIBUJO: HSQ1072 |
| CUSTOMER | DISTRIBUTION | | | | | ESCALA: NONE |
| | | | | | | HOJA: 1 |

4

3

2

1

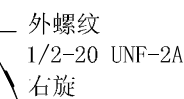


Wiring Diagram

HIGH VOLTAGE SHOWN. ROTATE DIAL
CCW TO 115 FOR LOW VOLTAGE.

USE COPPER CONDUCTORS ONLY.
INSTALL MOTOR WITH VENTS DOWN.

ACCEPTABLE FOR FIELD WIRING



| | | | |
|----|----------------------------|----|---------|
| 名称 | MODEL-CFHP-56FR OUTLINE | | |
| 图幅 | C | 图号 | HSQ1072 |
| 比例 | NONE | | 页号 1 |