

# PRODUCT INFORMATION PACKET



Model No: HST275  
Catalog No: HST275

Pool Pump Motor, 2.75 HP, 1 Ph, 60 Hz, 208-230 V, 3600 RPM, 56J Frame, ODP



Regal and Century are trademarks of Regal Rexnord Corporation or one of its affiliated companies.  
©2022 Regal Rexnord Corporation, All Rights Reserved. MC017097E





### Nameplate Specifications

|                     |                 |                    |            |
|---------------------|-----------------|--------------------|------------|
| Output HP           | 2.75 Hp         | Output KW          | 2.1 kW     |
| Frequency           | 60 Hz           | Voltage            | 208-230 V  |
| Speed               | 3450 rpm        | Service Factor     | 1          |
| Phase               | 1               | Duty               | Continuous |
| Insulation Class    | F               | Frame              | 56J        |
| Enclosure           | Open Drip Proof | Thermal Protection | Automatic  |
| Ambient Temperature | 50 °C           | UL                 | Recognized |
| CSA                 | Y               | Number of Speeds   | 1          |

### Technical Specifications

|                   |                               |                       |                           |
|-------------------|-------------------------------|-----------------------|---------------------------|
| Electrical Type   | Capacitor Start Capacitor Run | Starting Method       | Across The Line           |
| Poles             | 2                             | Rotation              | Counterclockwise Pump End |
| Mounting          | Round                         | Motor Orientation     | Horizontal                |
| Drive End Bearing | Ball                          | Opp Drive End Bearing | Ball                      |
| Frame Material    | Rolled Steel                  | Shaft Type            | 7/16 Thread               |
| Overall Length    | 16.24 in                      | Frame Length          | 9.50 in                   |
| Shaft Diameter    | 0.625 in                      | Shaft Extension       | 2.56 in                   |
| Outline Drawing   | HST275-S01                    | Connection Drawing    | D0000312-008              |

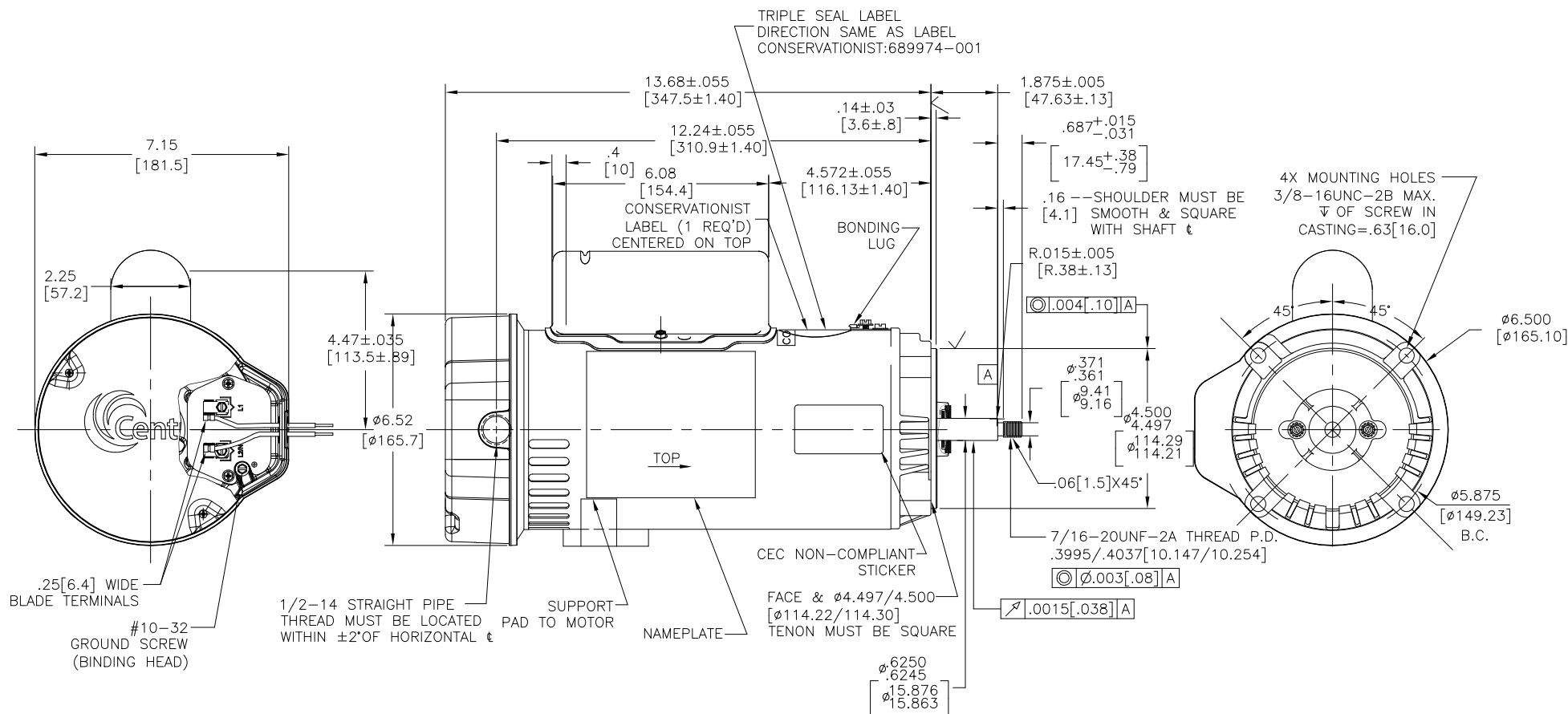
This is an uncontrolled document once printed or downloaded and is subject to change without notice. Date Created:11/28/2022

4

3

2

1



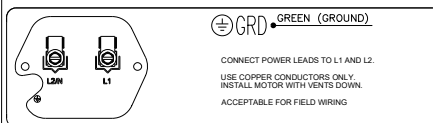
## NAMEPLATE DATA

## EXTERNAL CONNECTION DIAGRAM

## NOTES

MODEL: K48AA32A01  
CUST PN: HST275  
HP: 2.75 SF: 1.00  
ROT: CCWPE  
RPM: 3450  
TYPE: K  
FORM: CODE: G  
FRAME: 56J

VOLTS: 208-230  
AMPS: 12.3-11.3  
MAX AMPS: -  
SF AMPS: -  
PH: 1 HZ: 60  
INS: F AMB: 50  
DUTY: CONT  
ENCLOSURE: ODP  
THERM. PROT. CET33DR



D0000312-009

1. FINISH PAINT TO BE SATIN BLACK.
2. 7/16 WRENCH FLATS ON SHAFT-FOR ACCESS TO THIS WRENCH FLAT REMOVE END COVER.
3. STAINLESS STEEL SHAFT EXT.
4. LIMITS ON AMPLITUDE OF VIBRATION MEASURED AT BEARING HOUSING = .001[.03].
5. DUAL VOLTAGE MOTORS ARE TO BE CONNECTED FOR HIGHER VOLTAGE. QUICK VOLTAGE CHANGE PLUG INCLUDED ON THE TERMINAL BOARD.
6. SUPPORT PAD TO BE PACKED WITH EACH MOTOR
7. CTQ REQUIREMENT SEE EP000105-008.
8. RoHS & REACH REQUIREMENT SEE EP000014.

PERFORMANCE  
CURVEAPPROVED  
SAMPLE

K48N2W18

CSA

| FILE#  | CCN#  | FILE#   | GUIDE#  |
|--------|-------|---------|---------|
| E25022 | XEWR2 | LR43341 | 4211-01 |

CUSTOMER DISTRIBUTION SERVICES

CRITICAL TO QUALITY  
CHARACTERISTICS(CTQs)

PROCESS

ENGINEERING

APPLICATION

REGULATORY

LIFE

DRAWING REVISION  
K  
ECO  
ECR-0217829  
APPROVED BY  
JANE.WU  
SEE ECR

REVISION BY  
CELINE.ZHAO  
APPROVED BY  
JANE.WU

DATE  
05-19-2022  
DATE  
05-19-2022

COPYRIGHT REGAL BELOIT AMERICA, INC. ALL RIGHTS RESERVED.  
REGAL BELOIT AMERICA, INC. (OWNER) AND CONTAINS OWNER'S PROPRIETARY  
INFORMATION. ANY PERSON, CORPORATION OR OTHER ENTITY RECEIVING IT IS DEEMED,  
BY RECEIVING IT, TO AGREE THAT IT, AND/OR ANY PART OF IT, SHALL NOT BE DISCLOSED  
TO ANY PERSON, CORPORATION OR OTHER ENTITY, DUPLICATED, AND/OR USED, EXCEPT  
AS EXPRESSLY APPROVED IN WRITING IN ADVANCE BY OWNER. THIS DOCUMENT SHALL  
BE RETURNED TO OWNER UPON REQUEST. IT MAY BE SUBJECT TO CERTAIN  
RESTRICTIONS UNDER APPLICABLE EXPORT CONTROL LAWS AND REGULATIONS.

TOLERANCES UNLESS  
OTHERWISE SPECIFIED

| DEC. | INCH    | MM        | ANGLE |
|------|---------|-----------|-------|
| X    | ±0.1    | [±2.5]    | ±0.5° |
| .XX  | ±0.02   | [±0.51]   |       |
| .XXX | ±0.005  | [±0.127]  |       |
| XXXX | ±0.0005 | [±0.0127] |       |

REMOVE BURRS & BREAK SHARP  
EDGES .003/.015 [0.076/.381] X 45°  
CORNER FILLETS R.02 [5.1]  
MACHINED SURFACES 125/32  
mm SHOWN IN [BRACKETS]

DRAWN BY:  
Y. LIU  
DATE:  
8/13/2012  
APPROVED BY:  
K. GONG  
DATE:  
8/13/2012  
REFERENCE  
THIRD ANGLE  
PROJECTION

| Regal Beloit America, Inc. |                |
|----------------------------|----------------|
| DESCRIPTION                | PROCESS/FINISH |
| MODEL-PFHP-48FR<br>OUTLINE |                |
| MATERIAL                   |                |
| SIZE DWG NO                | HST275         |
| SHEET                      | 1              |

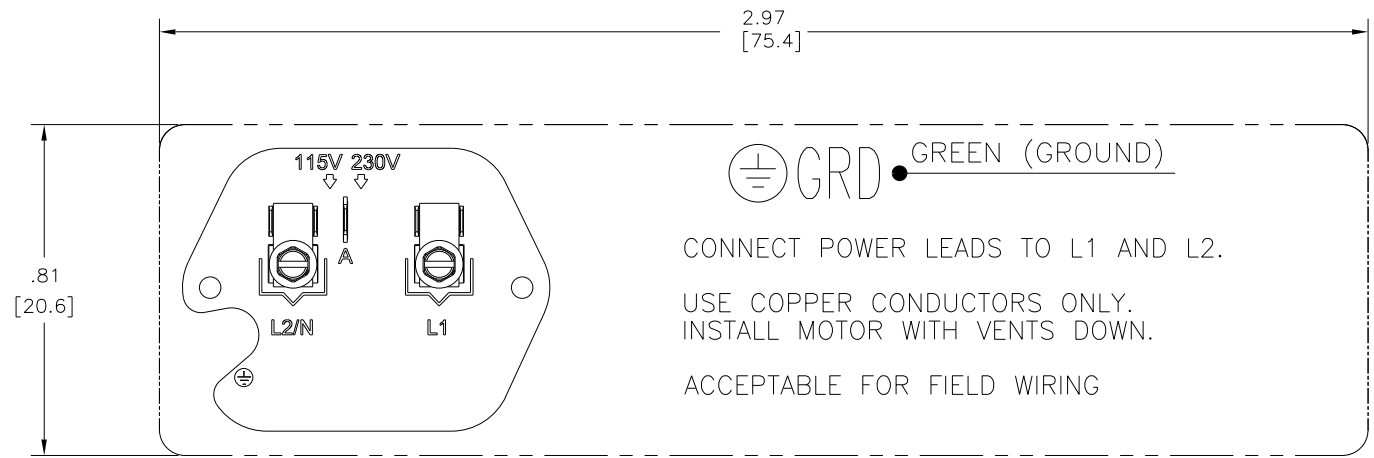
4

3

2

3 of 4

1



USED FOR 230 VOLTAGE – SINGLE SPEED

NOTES:

1. FOR USE WITH 2514896 NAME PLATE BLANK.
2. \_\_\_\_\_ INDICATES DIMENSIONAL LIMITS.
3. DIE MUST PRODUCE A LEGIBLE IMPRESSION.
4. CTQ REQUIREMENT SEE EP000105-008.
5. RoHS & REACH ETC REQUIREMENT SEE EP000014.

|   |   |                            |                    |   |                               |  |  |
|---|---|----------------------------|--------------------|---|-------------------------------|--|--|
| CRITICAL TO QUALITY CHARACTERISTICS(CTQs)<br><br><div>Ⓟ PROCESS</div> <div>ⓔ ENGINEERING</div> <div>ⓐ APPLICATION</div> <div>Ⓡ REGULATORY</div> <div>Ⓛ LIFE</div> | DRAWING REVISION<br>B   | REVISION BY<br>GELINE.ZHAO | DATE<br>05-10-2022 | TOLERANCES UNLESS OTHERWISE SPECIFIED<br><div>DEC. INCH mm ANGLE</div> <div>.X ±0.1 [±3] ±0.5°</div> <div>.XX ±0.02 [±0.5]</div> <div>.XXX ±0.005 [±0.13]</div> <div>.XXXX ±0.0005 [±0.013]</div> <div>REMOVE BURRS &amp; BREAK SHARP</div> <div>EDGES .003/.015 [0.08/.38]</div> <div>CORNER FILLETS .02 [.5]</div> <div>MACHINED SURFACES</div> <div>INCH <sup>125</sup> mm <sup>3.2</sup>✓</div> <div>mm SHOWN IN [BRACKETS]</div> | DRAWN BY:<br>GELINE.ZHAO      | <div><div>REGAL™</div><div>Regal Beloit (Changzhou) Co. Ltd.</div></div> |  |
|   | ECO<br>ECR-0217406  | APPROVED BY<br>JANE.WU     | DATE<br>05-10-2022 |   | DATE:<br>04-27-2022           |  |  |
|   | ECO DESCRIPTION<br>SEE ECR  |                            |                    |   | APPROVED BY:<br>JANE.WU       |  |  |
|   | COPYRIGHT REGAL BELOIT (CHANGZHOU) CO. LTD. ALL RIGHTS RESERVED.<br>PROPRIETARY AND CONFIDENTIAL INFORMATION - THIS DOCUMENT IS THE PROPERTY OF REGAL BELOIT (CHANGZHOU) CO. LTD. ("OWNER") AND CONTAINS OWNER'S PROPRIETARY INFORMATION. ANY PERSON, CORPORATION OR OTHER FIRM RECEIVING IT IS DEEMED, BY RECEIVING IT, TO AGREE THAT IT, AND/OR ANY PART OF IT, SHALL NOT BE DISCLOSED TO ANY PERSON, CORPORATION OR OTHER ENTITY, DUPLICATED, AND/OR USED, EXCEPT AS EXPRESSLY APPROVED IN WRITING IN ADVANCE BY OWNER. THIS DOCUMENT SHALL BE RETURNED TO OWNER UPON REQUEST. IT MAY BE SUBJECT TO CERTAIN RESTRICTIONS UNDER APPLICABLE EXPORT CONTROL LAWS AND REGULATIONS. |                            |                    |   | DATE:<br>04-27-2022           |  |  |
|   |   |                            |                    |   | REFERENCE<br>-                |  |  |
|   |   |                            |                    |   | MATERIAL<br>-                 | PROCESS/FINISH<br>-  |  |
|   |   |                            |                    |   | SIZE DWG NO<br>B D0000312-008 | SHEET<br>1   |  |