

4

3

2

1

| REV | ECO     | REV BY    | DATE       | APPD     | DATE       |
|-----|---------|-----------|------------|----------|------------|
| C   | 0025579 | E.SINECIO | 04-25-2012 | R.RASCON | 04-25-2012 |

NON SVRS LABEL ON  
BACK SIDE OF MOTOR  
ABOVE SERIAL LABEL

#10-32 GROUND SCREW  
BINDING HEAD

TERMINALS  
.25[6.4] WIDE BLADES

SERIAL LABEL  
AT 9:00 O'CLOCK

11.00

[279.39]

9.56

[242.82]

TOP OF NAMEPLATE

BONDING LUG

TOP

TOP

TOP

Ø5.62  
[Ø142.70]

PLUG

1/2-14 STRAIGHT PIPE  
THREAD MUST BE LOCATED WITHIN  
±2" OF HORIZONTAL

FIELD WIRING STICKER

FACE & Ø4.497[114.22]/4.500[114.30]  
TENON MUST BE SQUARE & CONCENTRIC  
WITH SHAFT WITHIN .004[.10] T.I.R.

2.06

[52.39]

1.40

[35.60]

EFFECTIVE LENGTH  
OF KEYWAY

1/32 X 45° CHAMFER

Ø.6245  
.6250  
Ø15.86  
Ø15.87

Ø4.497  
Ø4.500  
Ø114.21  
Ø114.29

SLINGER

MAX. RUNOUT ON END  
OF SHAFT .002[.05] T.I.R.

MOUNTING HOLES 3/8-16 UNC-2B MAX.  
DEPTH OF SCREW IN CASTING = .625[15.88]

4X

.186  
.188  
[4.72  
4.78]

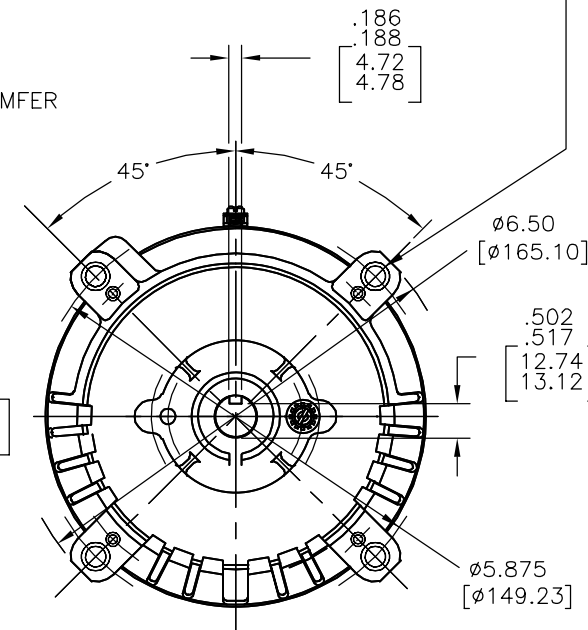
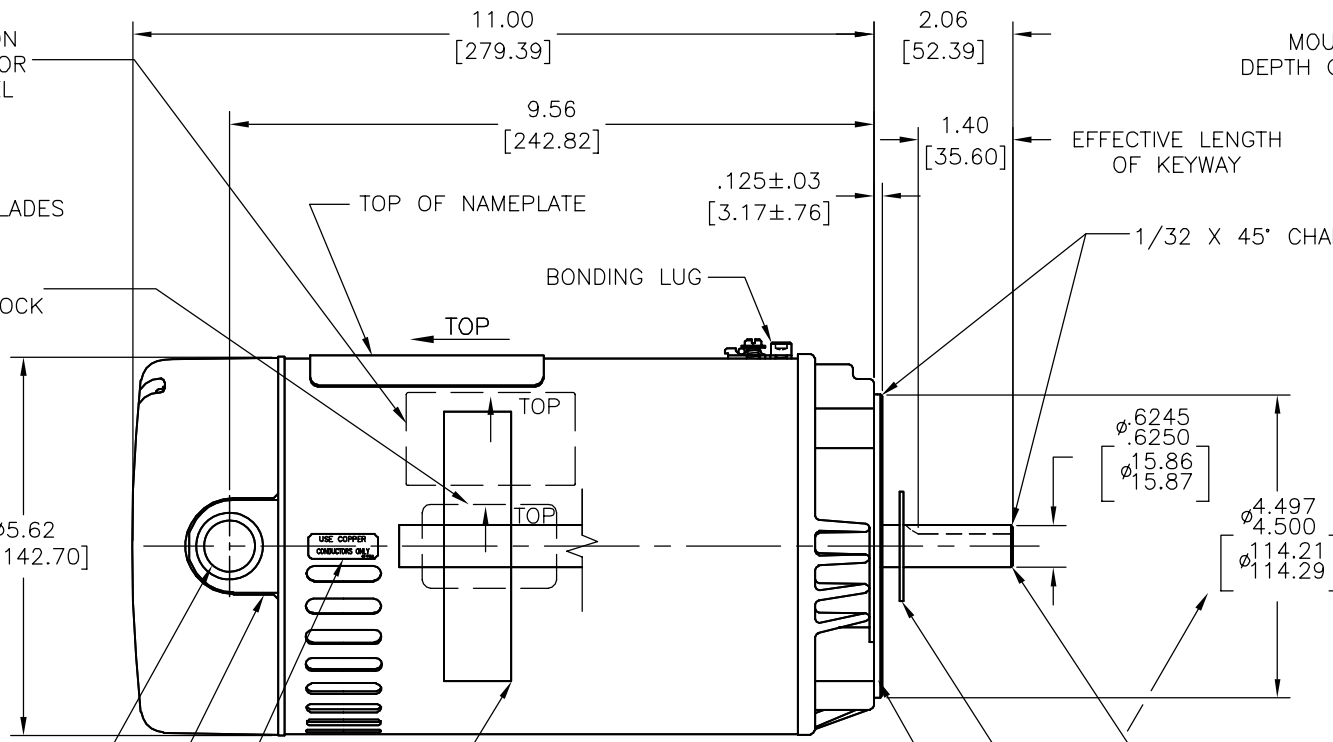
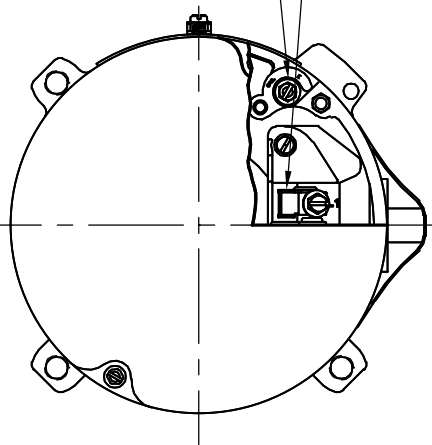
45°

45°

Ø6.50  
[Ø165.10]

.502  
.517  
[12.74  
13.12]

Ø5.875  
[Ø149.23]

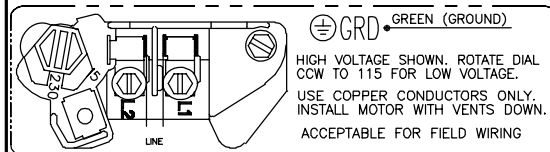


## NAMEPLATE DATA

## EXTERNAL CONNECTION DIAGRAM

## NOTES

MODEL: C48J2N116A4  
CUST PN: SK1052  
HP: 1/2 SF: 1.6  
ROT: CCWPE  
RPM: 3450  
TYPE: UAC CODE: L  
FORM: FRAME: 56C  
VOLTS: 115/230  
AMPS:  
MAX AMPS: 10.6/5.3  
SF AMPS:  
PH: 1 HZ: 60  
INS: B AMB: 50°C  
DUTY: CONT  
ENCLOSURE: ODP  
THERMALLY PROTECTED



## NOTES:

1. FINISH PAINT TO BE SATIN-BLACK.
2. 7/16" WRENCH FLATS ON SHAFT-  
FOR ACCESS TO THIS WRENCH FLAT  
REMOVE END COVER.
3. STAINLESS STEEL SHAFT EXT.
4. LIMITS ON AMPLITUDE OF VIBRATION  
MEASURED AT BEARING HOUSING=.001.
5. CONNECTED FOR HIGH VOLTAGE.
6. MAX. END PLAY LESS THAN .005[.13]

PERFORMANCE  
CURVEAPPROVED  
SAMPLE

## GEOMETRIC CHARACTERISTICS &amp; SYMBOLS

□ FLATNESS  
— STRAIGHTNESS  
∠ ANGULARITY  
⊥ PERPENDICULARITY (SQUARENESS)  
// PARALLELISM  
○ ROUNDNESS (CIRCULARITY)  
⊙ CYLINDRICITY  
△ PROFILE OF ANY SURFACE  
∩ PROFILE OF ANY LINE  
↑ RUNOUT  
⊕ TRUE POSITION  
⊙ CONCENTRICITY  
≡ SYMMETRY

ASME Y14.5M 1994

UNLESS OTHERWISE SPECIFIED  
DIM. TOLERANCES ARE AS FOLLOWS:

INCH X XX XXX XXXX  
mm ±0.5 ±0.13 ±0.013  
ANG. ±50 DEG  
REMOVE BURRS & BREAK SHARP EDGES:  
INCH .003-.015 mm 0.1-0.4  
CORNER FILLETS TO:  
INCH .020 mm 0.5  
MACHINE SURFACES:  
INCH 125 mm 3.2

METRIC DIMS. SHOWN IN [BRACKETS]

## DR BY:

TH

10-27-2010

## APPD:

TZ

10-27-2010

## THIRD ANGLE PROJECTION



EDS DATE 02-22-2008  
FORMAT REV G

CONFIDENTIAL: THIS DRAWING AND ITS INFORMATION ARE  
THE EXCLUSIVE AND CONFIDENTIAL PROPERTY OF REGAL-  
BELOIT CORPORATION AND ARE NOT TO BE DISCLOSED,  
DUPLICATED, DISTRIBUTED OR OTHERWISE USED WITHOUT  
THE WRITTEN CONSENT OF REGAL-BELOIT CORPORATION.  
-ALL RIGHTS RESERVED.



REGAL-BELOIT CORPORATION

## DESCRIPTION

MODEL-PFHP-48FR  
OUTLINE

## SIZE

C

## DWG NO

SK1052

## SCALE

NONE

## SHEET

1

4

3

2

1

4

3

2

1

|           |         |               |            |               |            |
|-----------|---------|---------------|------------|---------------|------------|
| REVISION: | ECO     | REVISADO POR: | FECHA:     | APROBADO POR: | FECHA:     |
| C         | 0025579 | E.SINECIO     | 04-25-2012 | R.RASCON      | 04-25-2012 |

LA PARTE SUPERIOR SIN LA  
ETIQUETA SVRS DEBAJO DE  
LA ETIQUETA SERIAL

#10-32 TORNILLO A TIERRA  
DE CABEZA CON CEJAS

TERMINALES  
.25[6.4] ASPAS ANCHAS

PARTE SUPERIOR DE  
LA ETIQUETA SERIAL  
A 9:00 O'CLOCK

11.00

[279.39]

9.56

[242.82]

PLACA CON  
NOMBRE SUPERIOR

TERMINAL

TOP

TOP

TOP

USE COPPER  
CONDUCTORS ONLY

FIJAR EL ATENUADOR DE APOYO

CAMPO PARA LA ETIQUETA  
DE CABLEADO

TIPO DE ROSCA  
1/2-14 DEBE ESTAR LOCALIZADA  
DENTRO DE  $\pm 2^\circ$  DE LA  
HORIZONTAL

LA CARA DE LA TAPA Y EL DIAMETRO  
MAQUINADO  $\phi 4.497[114.22]/4.500[114.30]$   
DEBERA CUADRAR Y SER CONCENTRICO  
A LA FLECHA DENTRO DE .004[.10] L.T.I.

MONTAJE DE BARENOS 3/8-16 UNC-2B MAXIMA  
PROFUNDIDA DE CAJA MOLDEADA = .625[15.88]

LONGITUD EFICAZ  
DE CUÑERO

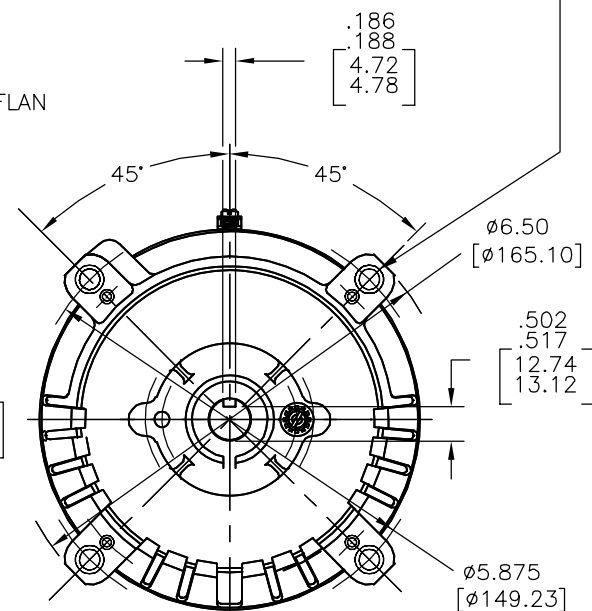
1/32 X 45° CHAFLAN

$\phi .6245$   
 $\phi .6250$   
 $\phi .15.86$   
 $\phi .15.87$

$\phi 4.497$   
 $\phi 4.500$   
 $\phi .114.21$   
 $\phi .114.29$

OSCILACION MAXIMA EN EL EXTREMO  
DE LA FLECHA .002[.05] L.T.I.

DISPERSOR

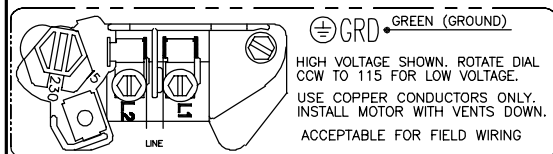


## NAMEPLATE DATA

## EXTERNAL CONNECTION DIAGRAM

## NOTES

MODEL: C48J2N116A4  
CUST PN: SK1052  
HP: 1/2 SF: 1.6  
ROT: CCWPE  
RPM: 3450  
TYPE: UAC CODE: L  
FORM: FRAME: 56C  
VOLTS: 115/230  
AMPS:  
MAX AMPS: 10.6/5.3  
SF AMPS:  
PH: 1 HZ: 60  
INS: B AMB: 50°C  
DUTY: CONT  
ENCLOSURE: ODP  
THERMALLY PROTECTED



## NOTAS:

- ACABADO DE PINTURA ES NEGRO SATIN.
- LLAVES PLANAS DE .44[11.1] SOBRE LA FLECHA PARA ACCESO A ESTA LLAVE PLANA REMOVER LA CUBIERTA.
- EXT. DE FLECHA DE ACERO INOXIDABLE
- LIMITES DE AMPLITUD DE VIBRACION MEDIDOS EN LA CAVIDAD DEL BALERO=.001[.02].
- CONECTADO A ALTO VOLTAJE
- MAXIMO JUEGO AXIAL MENOS QUE .005[.13]

PERFORMANCE  
CURVE

APPROVED  
SAMPLE

CARACTERISTICAS DE GEOMETRIA Y SIMBOLOS

A MENOS QUE SE ESPECIFIQUE DE  
OTRA MANERA, LAS TOLERANCIAS DE  
LAS DIMS; SON LAS SIGUIENTES:  
XX XXX XXXX  
PULG  $\pm .1$   $\pm .02$   $\pm .005$   $\pm .0005$   
mm  $\pm 0.5$   $\pm 0.13$   $\pm 0.013$   
ANG.  $\pm 50$  GRADOS  
ELIMINAR REBABAS Y ORILLAS FILOSAS  
DEL BORDE.  
PULG .003-.015 mm 0.1-0.4  
FILETEAR ESQUINA: PULG .020 mm 0.5  
MAQUINAR SUPERFICIES  
PULG  $\frac{1}{32}$  mm .32

DIBUJADO POR:

TH

10-27-2010

APROBADO POR:

TZ

10-27-2010

TERCER ANGULO  
DE PROYECCION



FECHA EDS: 02-22-2008  
REV. FORMATO: G

CONFIDENCIAL: ESTE DIBUJO Y SU INFORMACION  
SON PROPIEDAD DE USO EXCLUSIVO Y CONFIDENCIAL DE  
REGAL-BELOIT CORPORATION. Y NO DEBERAN SER REVELADOS,  
DUPLICADOS, DISTRIBUIDOS O USARSE DE OTRA MANERA  
SIN EL CONSENTIMIENTO ESCRITO DE REGAL-BELOIT  
CORPORATION. -TODOS LOS DERECHOS RESERVADOS.



REGAL-BELOIT CORPORATION

DESCRIPCION:

MODEL-PFHP-48FR  
OUTLINE

TAMAÑO:

C

NUMERO DE DIBUJO:

SK1052

ESCALA: NONE

HOJA: 1

4

3

2

1

4

3

2

1

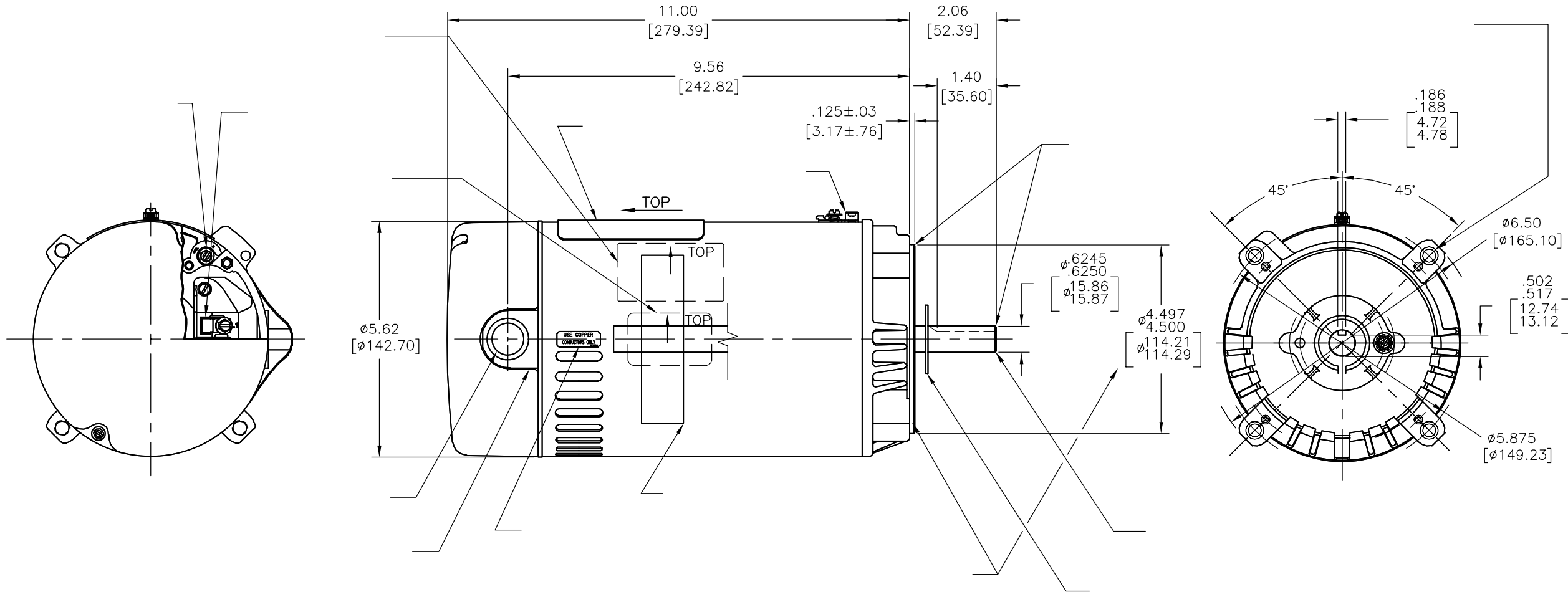
|    |         |           |            |          |            |
|----|---------|-----------|------------|----------|------------|
| 版本 | ECO     | 编制        | 日期         | 批准       | 日期         |
| C  | 0025579 | E.SINECIO | 04-25-2012 | R.RASCON | 04-25-2012 |

D

D

C

C



B

B

| NAMEPLATE DATA  | EXTERNAL CONNECTION DIAGRAM | NOTES |
|---|-----------------------------|-------|
| MODEL: C48J2N116A4<br>CUST PN: SK1052<br>HP: 1/2 SF: 1.6<br>ROT: CCWPE<br>RPM: 3450<br>TYPE: UAC<br>FORM: CODE: L<br>FRAME: 56C<br>VOLTS: 115/230<br>AMPS:<br>MAX AMPS: 10.6/5.3<br>SF AMPS:<br>PH: 1 HZ: 60<br>INS: B AMB: 50°C<br>DUTY: CONT<br>ENCLOSURE: ODP<br>THERMALLY PROTECTED |                             |       |

A

A

|                   |                       |   |  |   |  |
|-------------------|-----------------------|---|--|---|--|
| PERFORMANCE CURVE | APPROVED SAMPLE       | 形位公差<br>□ 平面度<br>— 直线度<br>∠ 倾斜度<br>⊥ 垂直度<br>∥ 平行度<br>○ 圆度<br>⊙ 圆柱度<br>⌒ 内圆角<br>△ 面轮廓度<br>⌒ 线轮廓度<br>⌒ 圆跳动<br>⊕ 位置度<br>⊙ 同轴度<br>≡ 对称度 | 除另有注明<br>尺寸公差如下:<br>英寸 X XX XXX XXXX<br>毫米 ±.1 ±.02 ±.005 ±.0005<br>毫米 ±0.5 ±0.13 ±0.013<br>角度 ±.50 度<br>清理毛刺和尖棱<br>英寸 .003-.015 毫米 0.1-0.4<br>内圆角<br>英寸 .020 毫米 0.5<br>表面粗糙度<br>英制 125 米制 3.2 | 绘图: TH 10-27-2010<br>批准: TZ 10-27-2010<br>第三角投影<br>图纸格式发布日期 02-22-2008<br>图纸格式版本 G<br>机密: 本图纸及相关信息所有权归REGAL-BELOIT CORPORATION.<br>未经REGAL-BELOIT CORPORATION书面授权, 不得泄露、<br>复制、传播或作其他用途。—版权所有 | <br>名称<br>MODEL-PFHP-48FR<br>OUTLINE<br>图幅 C 图号 SK1052<br>比例 NONE 页号 1 |
| C48J2W26          |                       |   | ASME Y14.5M 1994   |   |  |
| UL COMPONENT      | CSA                   |   |  |   |  |
| FILE#             | CCN#                  | FILE#   | GUIDE#   |   |  |
| E25022            | XEWR2                 | LR43341   | 4211-01  |   |  |
| CUSTOMER          | DISTRIBUTION SERVICES |   |  |   |  |

4

3

2

1