

4

3

2

1

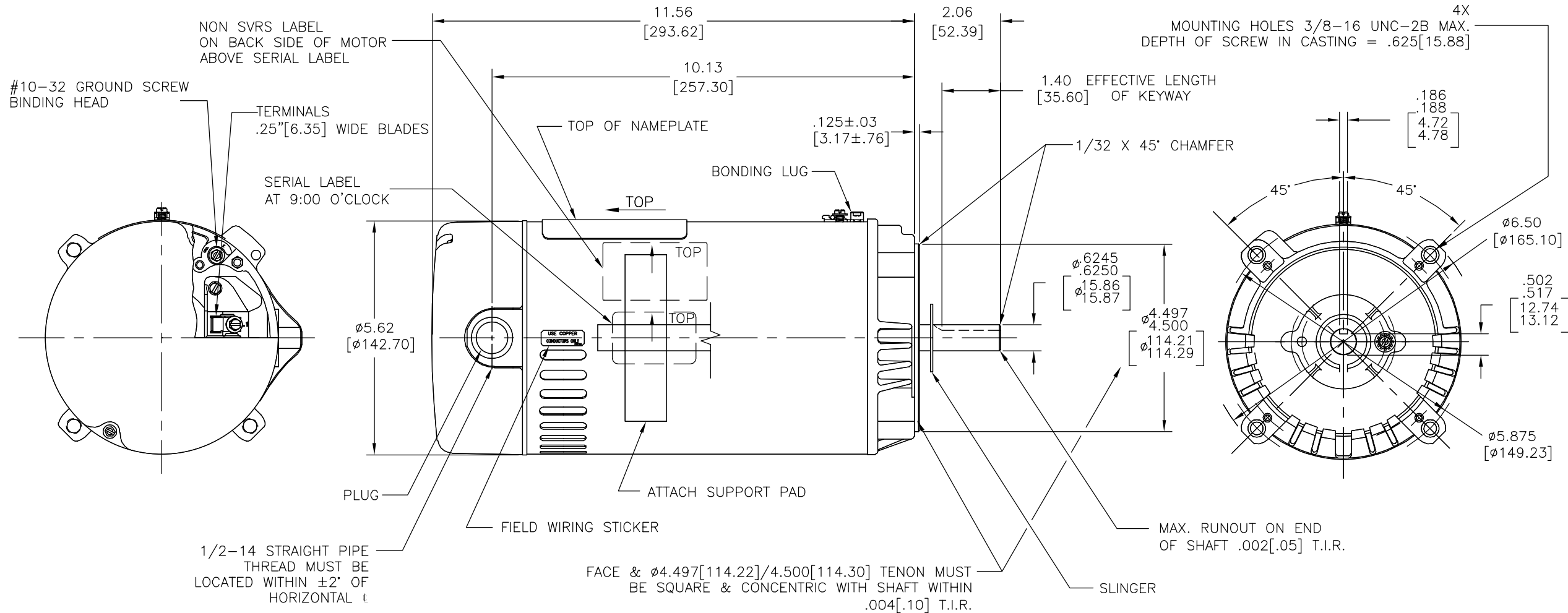
REV	ECO	REV BY	DATE	APPD	DATE
B	0025579	E.SINECIO	04-25-2012	R.RASCON	04-25-2012

D

C

B

A

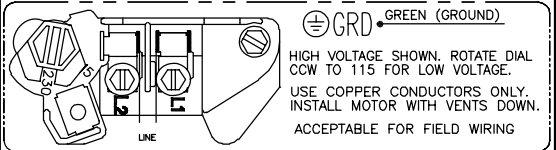



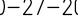
D

C

B

A

NAMEPLATE DATA	EXTERNAL CONNECTION DIAGRAM	NOTES
MODEL: C48K2N117A4 CUST PN: SK1072 HP: 3/4 SF: 1.5 ROT: CCWPE RPM: 3450 TYPE: UAC CODE: L FORM: FRAME: 56C VOLTS: 115/230 AMPS: MAX AMPS: 14.6/7.3 SF AMPS: PH: 1 HZ: 60 INS: B AMB: 50°C DUTY: CONT ENCLOSURE: ODP THERMALLY PROTECTED	 <p>GRD GREEN (GROUND)</p> <p>HIGH VOLTAGE SHOWN. ROTATE DIAL CCW TO 115 FOR LOW VOLTAGE.</p> <p>USE COPPER CONDUCTORS ONLY. INSTALL MOTOR WITH VENTS DOWN. ACCEPTABLE FOR FIELD WIRING</p>	NOTES: (1) FINISH PAINT TO BE SATIN-BLACK. (2) 7/16" WRENCH FLATS ON SHAFT- FOR ACCESS TO THIS WRENCH FLAT REMOVE END COVER. (3) STAINLESS STEEL SHAFT EXT. (4) LIMITS ON AMPLITUDE OF VIBRATION MEASURED AT BEARING HOUSING=.001. (5) CONNECTED FOR HIGH VOLTAGE. (6) MAX. END PLAY LESS THAN .005 [.13]

PERFORMANCE CURVE		APPROVED SAMPLE		<div>GEOMETRIC CHARACTERISTICS & SYMBOLS □ FLATNESS — STRAIGHTNESS ∠ ANGULARITY ⊥ PERPENDICULARITY (SQUARENESS) // PARALLELISM ○ ROUNDNESS (CIRCULARITY) ⊘ CYLINDRICITY △ PROFILE OF ANY SURFACE ⌒ PROFILE OF ANY LINE ↑ RUNOUT ⊕ TRUE POSITION ◎ CONCENTRICITY ≡ SYMMETRY</div> <div>ASME Y14.5M 1994</div>		<div>UNLESS OTHERWISE SPECIFIED DIM. TOLERANCES ARE AS FOLLOWS: INCH X XX XXX XXXX mm ±.1 ±.02 ±.005 ±.0005 mm ±0.5 ±0.13 ±0.013 ANG. ±50 DEG REMOVE BURRS & BREAK SHARP EDGES: INCH .003-.015 mm 0.1-0.4 CORNER FILLETS TO: INCH .020 mm 0.5 MACHINE SURFACES: INCH 125 mm 3.2</div> <div>METRIC DIMS. SHOWN IN [BRACKETS]</div>		DR BY: TH 10-27-2010		<div> REGAL-BELOIT CORPORATION</div>	
C48J2W26								APPD: TZ 10-27-2010			
UL COMPONENT		CSA						THIRD ANGLE PROJECTION  EDS DATE 02-22-2008 FORMAT REV G			
FILE#	CCN#	FILE#	GUIDE#					CONFIDENTIAL: THIS DRAWING AND ITS INFORMATION ARE THE EXCLUSIVE AND CONFIDENTIAL PROPERTY OF REGAL-BELOIT CORPORATION AND ARE NOT TO BE DISCLOSED, DUPLICATED, DISTRIBUTED OR OTHERWISE USED WITHOUT THE WRITTEN CONSENT OF REGAL-BELOIT CORPORATION. -ALL RIGHTS RESERVED.			
E25022	XEWR2	LR43341	4211-01								
CUSTOMER	DISTRIBUTION SERVICES					DESCRIPTION		MODEL-PFHP-48FR OUTLINE			
						SIZE C	DWG NO SK1072				
						SCALE NONE				SHEET 1	

4

3

2

1

4

3

2

1

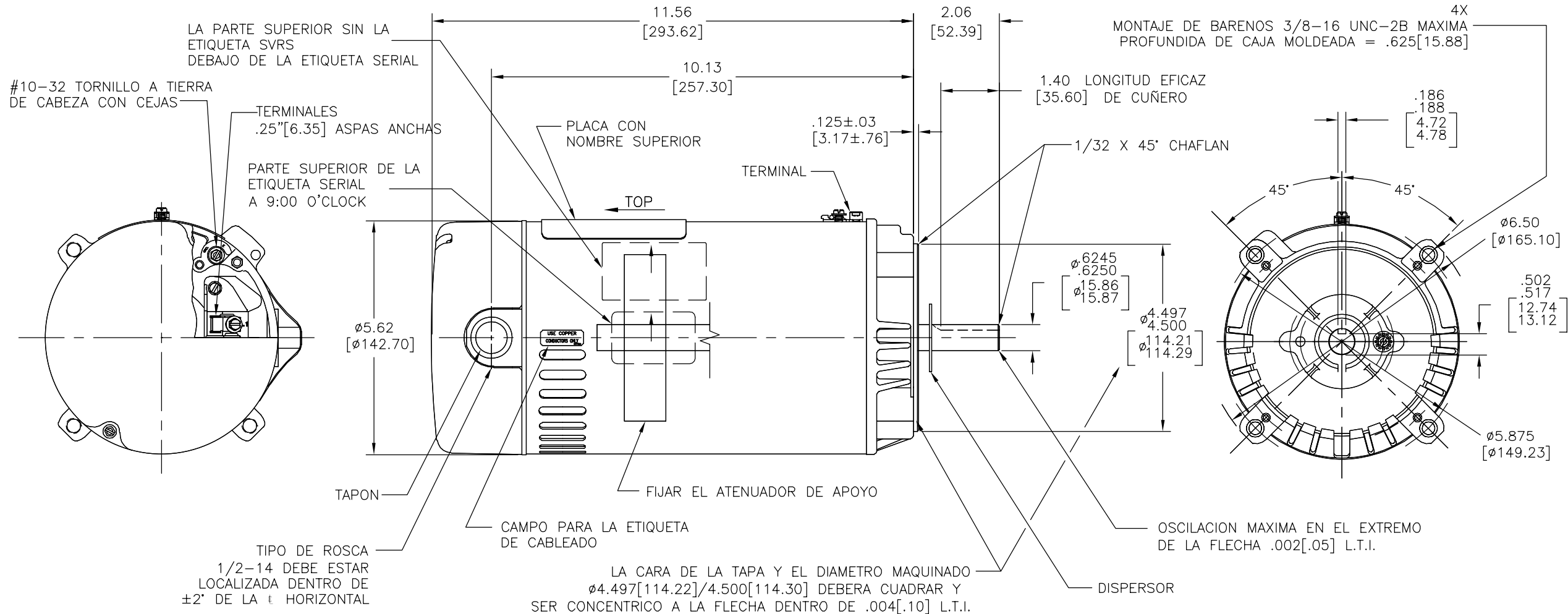
REVISION:	ECO	REVISADO POR:	FECHA:	APROBADO POR:	FECHA:
B	0025579	E.SINECIO	04-25-2012	R.RASCON	04-25-2012

D

C

D

C





B

B

NAMEPLATE DATA	EXTERNAL CONNECTION DIAGRAM	NOTES
MODEL: C48K2N117A4 CUST PN: SK1072 HP: 3/4 SF: 1.5 ROT: CCWPE RPM: 3450 TYPE: UAC CODE: L FORM: FRAME: 56C VOLTS: 115/230 AMPS: MAX AMPS: 14.6/7.3 SF AMPS: PH: 1 HZ: 60 INS: B AMB: 50°C DUTY: CONT ENCLOSURE: ODP THERMALLY PROTECTED	<p>GRD GREEN (GROUND)</p> <p>HIGH VOLTAGE SHOWN. ROTATE DIAL CCW TO 115 FOR LOW VOLTAGE.</p> <p>USE COPPER CONDUCTORS ONLY. INSTALL MOTOR WITH VENTS DOWN.</p> <p>ACCEPTABLE FOR FIELD WIRING</p>	NOTAS: 1. ACABADO DE PINTURA ES NEGRO SATIN. 2. LLAVES PLANAS DE .44 [11.1] SOBRE LA FLECHA PARA ACCESO A ESTA LLAVE PLANA REMOVER LA CUBIERTA. 3. EXT. DE FLECHA DE ACERO INOXIDABLE 4. LIMITES DE AMPLITUD DE VIBRACION MEDIDOS EN LA CAVIDAD DEL BALERO=.001 [.02]. 5. CONECTADO A ALTO VOLTAJE 6. MAXIMO JUEGO AXIAL MENOS QUE .005 [.13]

A

A

PERFORMANCE CURVE		APPROVED SAMPLE		CARACTERISTICAS DE GEOMETRIA Y SIMBOLOS ☐ PLANICIDAD — RECTITUD ∠ ANGULARIDAD ⊥ PERPENDICULARIDAD (A ESCUADRA) // PARALELISMO ○ REDONDEZ (CIRCULARIDAD) ∅ CILINDRICIDAD △ PERFIL DE CUALQUIER SUPERFICIE ∩ PERFIL DE CUALQUIER LINEA ↑ VARIACION ⊕ POSICION REAL ◎ CONCENTRICIDAD ≡ SIMETRIA ASME Y14.5M 1994	A MENOS QUE SE ESPECIFIQUE DE OTRA MANERA, LAS TOLERANCIAS DE LAS DIMS; SON LAS SIGUIENTES: X XX XXX XXXX PULG ±.1 ±.02 ±.005 ±.0005 mm ±0.5 ±0.13 ±0.013 ANG. ±50 GRADOS ELIMINAR REBABAS Y ORILLAS FILOSAS DEL BORDE. PULG .003-.015 mm 0.1-0.4 FILETEAR ESQUINA: PULG .020 mm 0.5 MAQUINAR SUPERFICIES PULG .125 mm .32 DIMS METRICAS MOSTRADAS [PARENTESIS]	DIBUJADO POR: TH	10-27-2010	 REGAL-BELOIT CORPORATION DESCRIPCION: MODEL-PFHP-48FR OUTLINE TAMAÑO: C NUMERO DE DIBUJO: SK1072 ESCALA: NONE HOJA: 1	
C48J2W26						APROBADO POR: TZ	10-27-2010		FECHA EDS: 02-22-2008
UL COMPONENT		CSA				TERCER ANGULO DE PROYECCION			REV. FORMATO: G
FILE#	CCN#	FILE#	GUIDE#			CONFIDENCIAL: ESTE DIBUJO Y SU INFORMACION SON PROPIEDAD DE USO EXCLUSIVO Y CONFIDENCIAL DE REGAL-BELOIT CORPORATION. Y NO DEBERAN SER REVELADOS, Duplicados, DISTRIBUIDOS O USARSE DE OTRA MANERA SIN EL CONSENTIMIENTO ESCRITO DE REGAL-BELOIT CORPORATION. -TODOS LOS DERECHOS RESERVADOS.			
E25022	XEWR2	LR43341	4211-01						
CUSTOMER	DISTRIBUTION SERVICES								

4

3

2

1

4

3

2

1

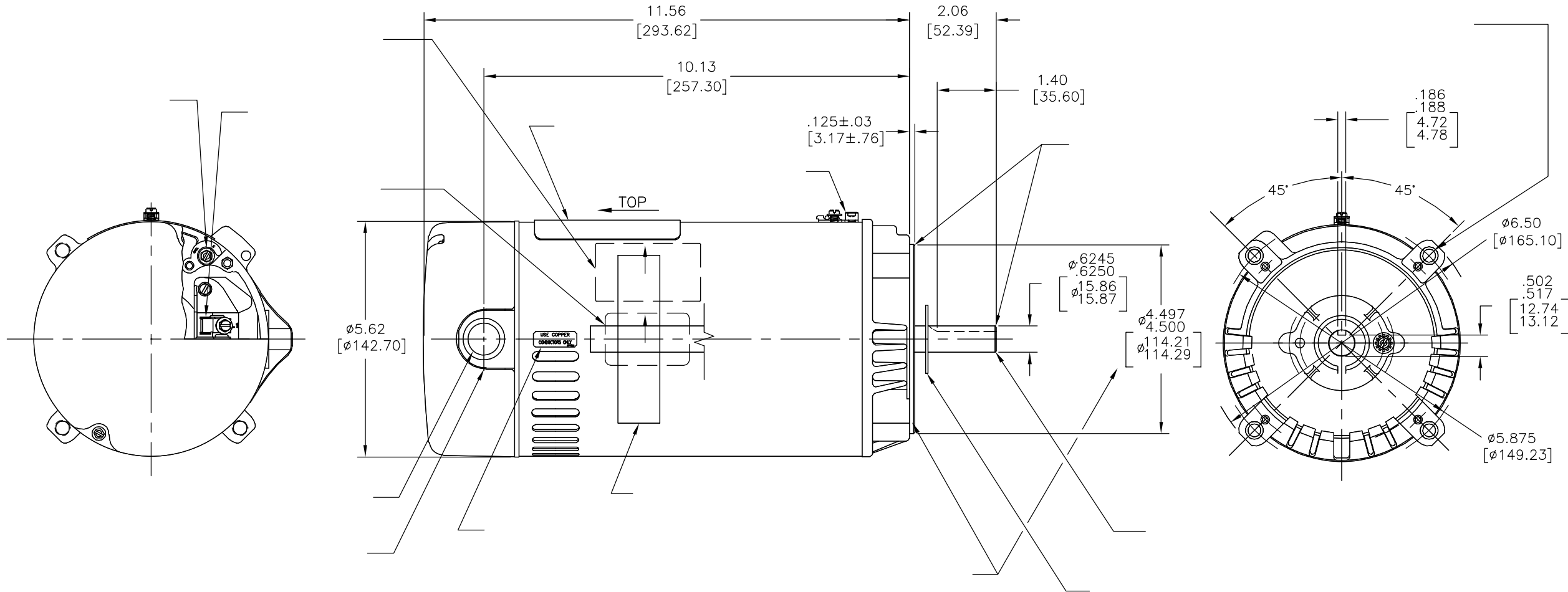
版本	ECO	编制	日期	批准	日期
B	0025579	E.SINECIO	04-25-2012	R.RASCON	04-25-2012

D

D

C

C



B

B

NAMEPLATE DATA	EXTERNAL CONNECTION DIAGRAM	NOTES
MODEL: C48K2N117A4 CUST PN: SK1072 HP: 3/4 SF: 1.5 ROT: CCWPE RPM: 3450 TYPE: UAC FORM: CODE: L VOLTS: 115/230 AMPS: MAX AMPS: 14.6/7.3 SF AMPS: PH: 1 HZ: 60 INS: B AMB: 50°C DUTY: CONT ENCLOSURE: ODP THERMALLY PROTECTED	<p>HIGH VOLTAGE SHOWN. ROTATE DIAL CCW TO 115 FOR LOW VOLTAGE. USE COPPER CONDUCTORS ONLY. INSTALL MOTOR WITH VENTS DOWN. ACCEPTABLE FOR FIELD WIRING</p>	

A

A

PERFORMANCE CURVE	APPROVED SAMPLE	形位公差 □ 平面度 — 直线度 ∠ 倾斜度 ⊥ 垂直度 ∥ 平行度 ○ 圆度 ⊙ 圆柱度 △ 面轮廓度 ⌒ 线轮廓度 ⤴ 圆跳动 ⊕ 位置度 ⊗ 同轴度 ≡ 对称度	除另有注明 尺寸公差如下: 英寸 X XX XXX XXXX 毫米 ±.1 ±.02 ±.005 ±.0005 毫米 ±0.5 ±0.13 ±0.013 角度 ±.50 度 清理毛刺和尖棱 英寸 .003-.015 毫米 0.1-0.4 内圆角 英寸 .020 毫米 0.5 表面粗糙度 英制 125 米制 3.2	绘图: TH 批准: TZ 第三角投影 图幅 机密: 本图纸及相关信息所有权归REGAL-BELOIT CORPORATION. 未经REGAL-BELOIT CORPORATION书面授权, 不得泄露、复制、传播或作其他用途。—版权所有	10-27-2010 10-27-2010 图纸格式发布日期 02-22-2008 图纸格式版本 G	名称 MODEL-PFHP-48FR OUTLINE 图号 SK1072 比例 NONE 图号 SK1072 比例 NONE	图号 SK1072 比例 NONE	图号 SK1072 比例 NONE	图号 SK1072 比例 NONE
-------------------	-----------------	----------------------------------------------------------------------------------------------------------------------------	------------------------------------------------------------------------------------------------------------------------------------------------------------------------------------------------	----------------------------------------------------------------------------------------------------------------------------------	-------------------------------------------------------------	----------------------------------------------------------------------------------------	-------------------------	-------------------------	-------------------------

4

3

2

1

ASME Y14.5M 1994

米制尺寸显示在[]