

4

3

2

1

REV	ECO	REV BY	DATE	APPD	DATE
B	0025579	E.SINECIO	04-25-2012	R.RASCON	04-25-2012

D

C

D

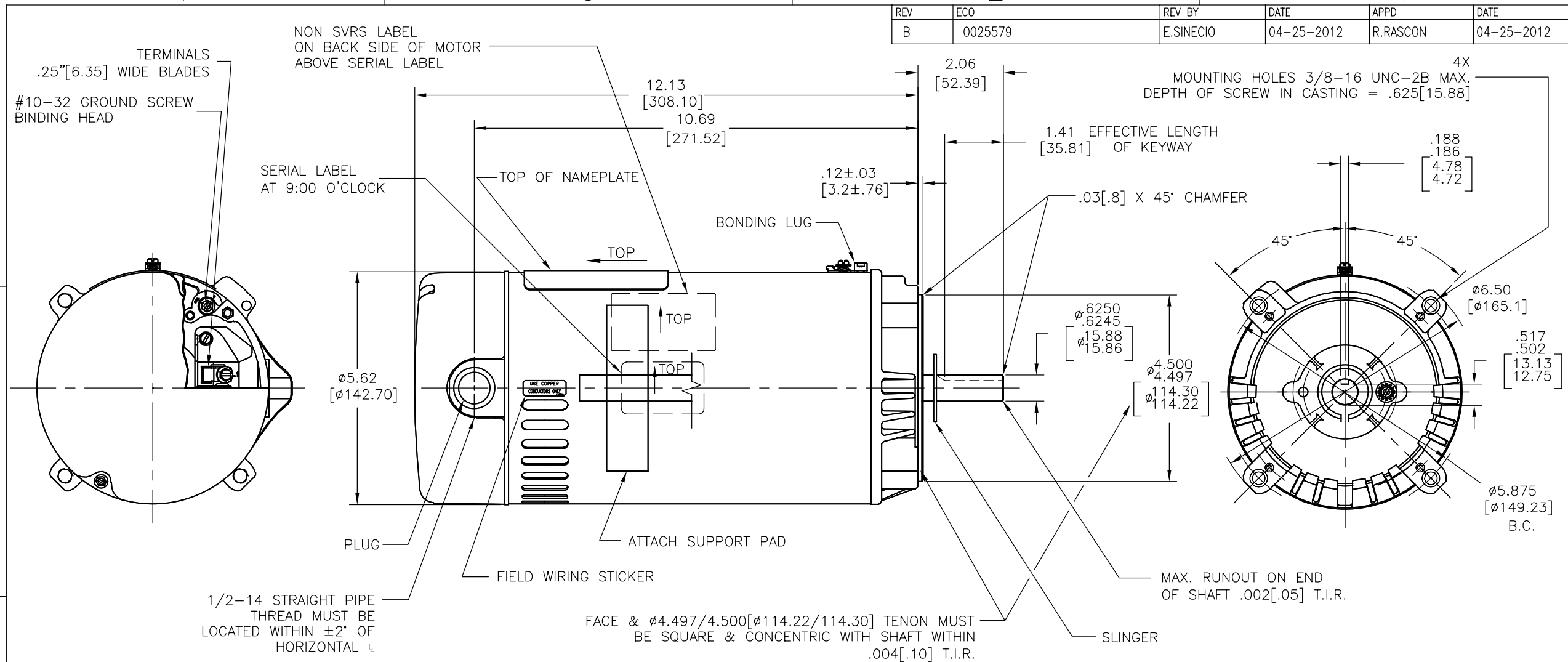
C

B



B

A

A



NAMEPLATE DATA	EXTERNAL CONNECTION DIAGRAM	NOTES
MODEL: C48L2N131 CUST PN: SK1102 HP: 1 SF: 1.5 ROT: CCWPE RPM: 3450 TYPE: UAC CODE: L FORM: FRAME: 56C VOLTS: 115/230 AMPS: MAX AMPS: 17.0/8.5 SF AMPS: - PH: 1 HZ: 60 INS: B AMB: 50°C DUTY: CONT ENCLOSURE: ODP THERMALLY PROTECTED	<p>GRD GREEN (GROUND)</p> <p>HIGH VOLTAGE SHOWN. ROTATE DIAL CCW TO 115 FOR LOW VOLTAGE.</p> <p>USE COPPER CONDUCTORS ONLY. INSTALL MOTOR WITH VENTS DOWN. ACCEPTABLE FOR FIELD WIRING</p>	1. FINISH PAINT TO BE SATIN-BLACK 2. 7/16 WRENCH FLATS ON SHAFT FOR ACCESS TO THIS WRENCH FLAT REMOVE END COVER. 3. STAINLESS STEEL SHAFT EXT. 4. LIMITS ON AMPLITUDE OF VIBRATION MEASURE AT BEARING HOUSING = .001 [.03] 5. CONNECTED FOR HIGH VOLTAGE. 6. MAX END PLAY LESS THAN .005 [.13]

PERFORMANCE CURVE		APPROVED SAMPLE		<div>GEOMETRIC CHARACTERISTICS & SYMBOLS □ FLATNESS — STRAIGHTNESS ∠ ANGULARITY ⊥ PERPENDICULARITY (SQUARENESS) // PARALLELISM ○ ROUNDNESS (CIRCULARITY) ⊘ CYLINDRICITY △ PROFILE OF ANY SURFACE ⌒ PROFILE OF ANY LINE ↑ RUNOUT ⊕ TRUE POSITION ◎ CONCENTRICITY ≡ SYMMETRY</div> <div>ASME Y14.5M 1994</div>		<div>UNLESS OTHERWISE SPECIFIED DIM. TOLERANCES ARE AS FOLLOWS: INCH X XX XXX XXXX mm ±.1 ±.02 ±.005 ±.0005 mm ±0.5 ±0.13 ±0.013 ANG. ±50 DEG REMOVE BURRS & BREAK SHARP EDGES: INCH .003-.015 mm 0.1-0.4 CORNER FILLETS TO: INCH .020 mm 0.5 MACHINE SURFACES: INCH 125 mm 3.2</div> <div>METRIC DIMS. SHOWN IN [BRACKETS]</div>		DR BY:		TH		10-27-2010		<div> REGAL-BELOIT CORPORATION</div> <div>DESCRIPTION</div> <div>MODEL-PFHP-48FR OUTLINE</div>			
C48L2W29								APPD:		TZ		10-27-2010					
UL COMPONENT		CSA						THIRD ANGLE PROJECTION				EDS DATE 02-22-2008 FORMAT REV G					
FILE#		CCN#						FILE#		GUIDE#		SIZE C				DWG NO SK1102	
E25022		XEWR2						LR43341		4211-01		SCALE NONE				SHEET 1	
CUSTOMER		DISTRIBUTION SERVICES															

4

3

2

1

4

3

2

1

REVISION:	ECO	REVISADO POR:	FECHA:	APROBADO POR:	FECHA:
B	0025579	E.SINECIO	04-25-2012	R.RASCON	04-25-2012

D

C

D

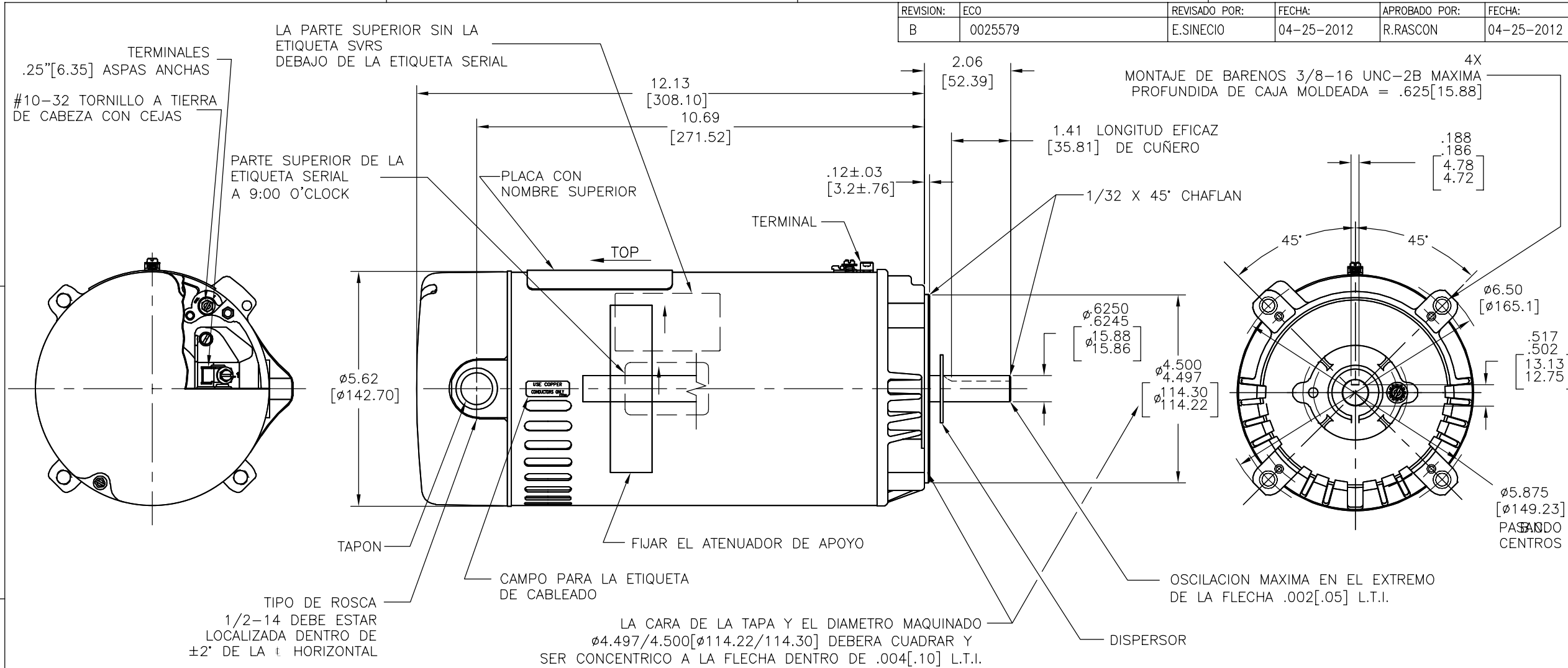
C

B


B

A

A



NAMEPLATE DATA	EXTERNAL CONNECTION DIAGRAM	NOTES
MODEL: C48L2N131 CUST PN: SK1102 HP: 1 SF: 1.5 ROT: CCWPE RPM: 3450 TYPE: UAC CODE: L FORM: FRAME: 56C VOLTS: 115/230 AMPS: MAX AMPS: 17.0/8.5 SF AMPS: - PH: 1 HZ: 60 INS: B AMB: 50°C DUTY: CONT ENCLOSURE: ODP THERMALLY PROTECTED	<p>GRD GREEN (GROUND)</p> <p>HIGH VOLTAGE SHOWN. ROTATE DIAL CCW TO 115 FOR LOW VOLTAGE.</p> <p>USE COPPER CONDUCTORS ONLY. INSTALL MOTOR WITH VENTS DOWN. ACCEPTABLE FOR FIELD WIRING</p>	1. PINTURA FINAL DEBE SER NEGRO SATIN 2. LLAVE 7 /16 EN PLANO DE FLECHA PARA ACCESAR A ESTA LLAVE EN PLANO REMOVER CUBIERTA. 3. EXTENSION DE FLECHA DE ACERO INOXIDABLE 4. LIMITE DE AMPLITUD DE VIBRACION MEDIDA EN CAVIDAD DE BALERO = .001[.03] 5. CONECTADO PARA ALTO VOLTAGE. 6. JUEGO AXIAL MAXIMO MENOR A .005[.13]

PERFORMANCE CURVE		APPROVED SAMPLE		<div>CARACTERISTICAS DE GEOMETRIA Y SIMBOLOS ✓ PLANICIDAD — RECTITUD ∠ ANGULARIDAD ⊥ PERPENDICULARIDAD (A ESCUADRA) // PARALELISMO ○ REDONDEZ (CIRCULARIDAD) ∅ CILINDRICIDAD △ PERFIL DE CUALQUIER SUPERFICIE ∩ PERFIL DE CUALQUIER LINEA ↑ VARIACION ⊕ POSICION REAL ◎ CONCENTRICIDAD ≡ SIMETRIA</div> <div>ASME Y14.5M 1994</div> <div>DIMS METRICAS MOSTRADAS [PARENTESIS]</div>	DIBUJADO POR: TH		10-27-2010		<div> REGAL-BELOIT CORPORATION</div> <div>DESCRIPCION:</div> <div>MODEL-PFHP-48FR OUTLINE</div> <div>TAMAÑO: C</div> <div>NUMERO DE DIBUJO: SK1102</div> <div>ESCALA: NONE</div> <div>HOJA: 1</div>
C48L2W29					APROBADO POR: TZ		10-27-2010		
UL COMPONENT		CSA			TERCER ANGULO DE PROYECCION		FECHA EDS: 02-22-2008 REV. FORMATO: G		
FILE#	CCN#	FILE#	GUIDE#		<div>CONFIDENCIAL: ESTE DIBUJO Y SU INFORMACION SON PROPIEDAD DE USO EXCLUSIVO Y CONFIDENCIAL DE REGAL-BELOIT CORPORATION. Y NO DEBERAN SER REVELADOS, DuplicADOS, DISTRIBUIDOS O USARSE DE OTRA MANERA SIN EL CONSENTIMIENTO ESCRITO DE REGAL-BELOIT CORPORATION. -TODOS LOS DERECHOS RESERVADOS.</div>				
E25022	XEWR2	LR43341	4211-01						
CUSTOMER		DISTRIBUTION SERVICES							

4

3

2

1

A

11

