

4

3

2

1

REV	ECO	REV BY	DATE	APPD	DATE
B	0025579	E.SINECIO	04-25-2012	R.RASCON	04-25-2012

D

C

B

A

TERMINALS
.25[6.35] WIDE BLADES

1/2-14 STRAIGHT PIPE
THREAD MUST BE
LOCATED WITHIN $\pm 2'$ OF
HORIZONTAL \perp

#10-32 GROUND SCREW
BINDING HEAD

NON SVRS LABEL
ON BACK SIDE OF MOTOR
ABOVE SERIAL LABEL

SERIAL LABEL
AT 9:00 O'CLOCK

TOP OF NAMEPLATE

FIELD WIRING STICKER TO BE
LOCATED & TO READ AS SHOWN

CONSERVATIONIST STICKER
1 REQ'D CENTERED ON TOP

USE COPPER
CONDUCTORS ONLY

BONDING LUG

SUPPORT PAD

1.40
[35.45]
EFFECTIVE LENGTH
OF KEYWAY

MAX. RUNOUT ON END
OF SHAFT .002[.05] T.I.R.

ϕ .6245
.6250
 ϕ 15.86
 ϕ 15.87

ϕ 4.497
4.500
 ϕ 114.24
 ϕ 114.31

1/32 X 45° CHAMFER
SLINGER
FACE & ϕ 4.497[114.22]/4.500[114.30]
TENON MUST BE SQUARE & CONCENTRIC
WITH SHAFT WITHIN .004[.10] T.I.R.

MOUNTING HOLES 3/8-16 UNC-2B MAX.
DEPTH OF SCREW IN CASTING = .625[15.88]

CAPACITOR HOUSING TO BE
LOCATED WITHIN $\pm 2.50'$ OF
VERTICAL \perp OF END FRAME(P.E.).

.186
.188
[4.72
4.78]

ϕ 6.50
[ϕ 165.10]

.502
.517
[12.76
13.14]

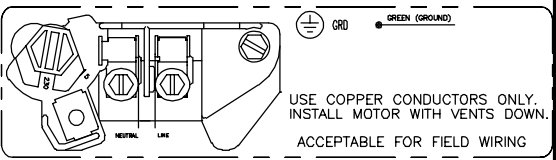
ϕ 5.875
[ϕ 149.23]
B.C.

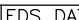

D

C

B

A

NAMEPLATE DATA	EXTERNAL CONNECTION DIAGRAM	NOTES
MODEL: K48N2N113 CUST PN: SK1202 HP: 2 SF: 1.3 ROT: CCWPE RPM: 3450 TYPE: UAK CODE: H FORM: FRAME: 56C VOLTS: 230 AMPS: MAX AMPS: 11.2 SF AMPS: - PH: 1 HZ: 60 INS: B AMB: 50°C DUTY: CONT ENCLOSURE: ODP THERMALLY PROTECTED		NOTES: (1) FINISH PAINT TO BE SATIN-BLACK. (2) 7/16" WRENCH FLATS ON SHAFT- FOR ACCESS TO THIS WRENCH FLAT REMOVE END COVER. (3) STAINLESS STEEL SHAFT EXT. (4) LIMITS ON AMPLITUDE OF VIBRATION MEASURED AT BEARING HOUSING=.001.

PERFORMANCE CURVE		APPROVED SAMPLE		GEOMETRIC CHARACTERISTICS & SYMBOLS □ FLATNESS — STRAIGHTNESS ∠ ANGULARITY ⊥ PERPENDICULARITY (SQUARENESS) ∥ PARALLELISM ○ ROUNDNESS (CIRCULARITY) ⊘ CYLINDRICITY △ PROFILE OF ANY SURFACE ▽ PROFILE OF ANY LINE ↑ RUNOUT ⊕ TRUE POSITION ⊙ CONCENTRICITY ≡ SYMMETRY		UNLESS OTHERWISE SPECIFIED DIM. TOLERANCES ARE AS FOLLOWS: INCH X XX XXX XXXX ±.1 ±.02 ±.005 ±.0005 mm ±0.5 ±0.13 ±0.013 ANG. ±50 DEG REMOVE BURRS & BREAK SHARP EDGES: INCH .003–.015 mm 0.1–0.4 CORNER FILLETS TO: INCH .020 mm 0.5 MACHINE SURFACES: INCH 125 mm 3.2		DR BY: TH 10-27-2010 APPD: TZ 10-27-2010 THIRD ANGLE PROJECTION  EDS DATE 02-22-2008 FORMAT REV G		 REGAL-BELOIT CORPORATION	
K48N2W1										DESCRIPTION	
UL COMPONENT		CSA								MODEL-PFHP-48FR OUTLINE	
FILE#	CCN#	FILE#	GUIDE#							SIZE C DWG NO	
E25022	XEWR2	LR43341	4211-01							SK1202	
CUSTOMER	DISTRIBUTION SERVICES			ASME Y14.5M 1994		METRIC DIMS. SHOWN IN [BRACKETS]				SCALE NONE SHEET 1	
<div>CONFIDENTIAL: THIS DRAWING AND ITS INFORMATION ARE THE EXCLUSIVE AND CONFIDENTIAL PROPERTY OF REGAL-BELOIT CORPORATION AND ARE NOT TO BE DISCLOSED, DUPLICATED, DISTRIBUTED OR OTHERWISE USED WITHOUT THE WRITTEN CONSENT OF REGAL-BELOIT CORPORATION. -ALL RIGHTS RESERVED.</div>											

4

3

2

1

4

3

2

1

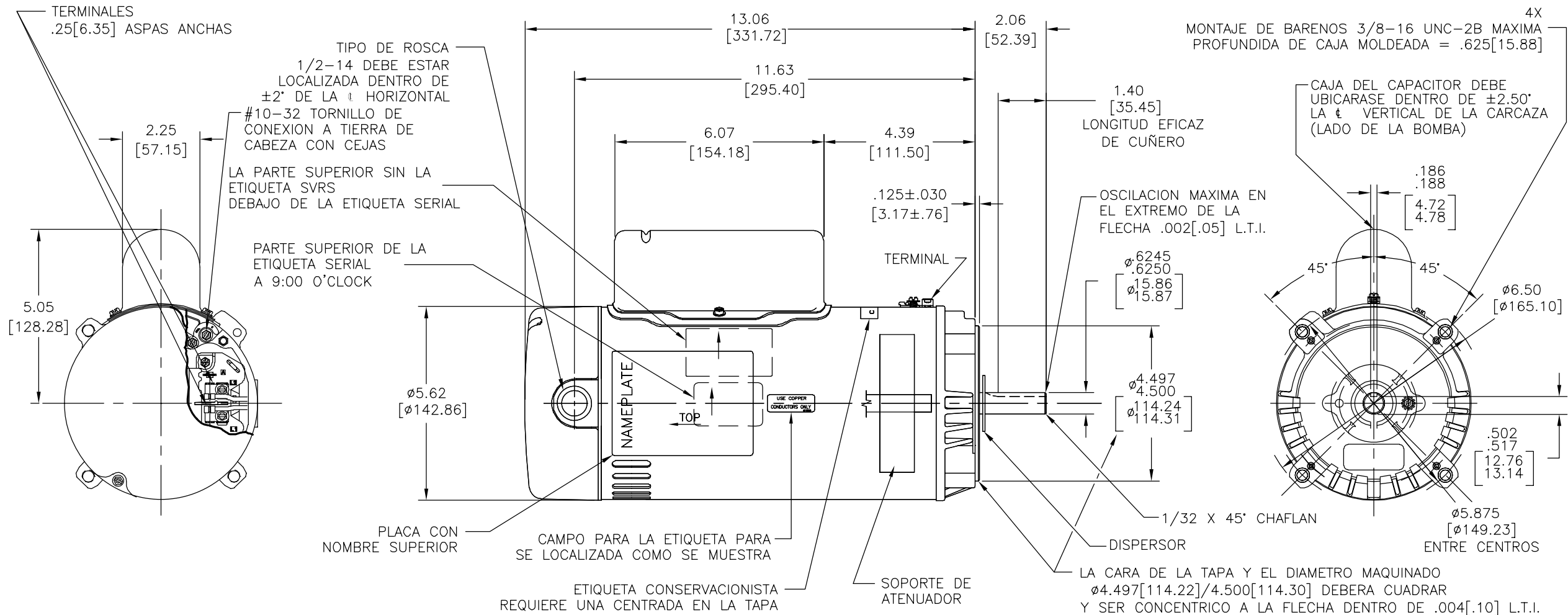
REVISION:	ECO	REVISADO POR:	FECHA:	APROBADO POR:	FECHA:
B	0025579	E.SINECIO	04-25-2012	R.RASCON	04-25-2012

D

C

D

C





B

B

NAMEPLATE DATA	EXTERNAL CONNECTION DIAGRAM	NOTES
MODEL: K48N2N113 CUST PN: SK1202 HP: 2 SF: 1.3 ROT: CCWPE RPM: 3450 TYPE: UAK FORM: CODE: H VOLTS: 230 AMPS: FRAME: 56C MAX AMPS: 11.2 SF AMPS: — PH: 1 HZ: 60 INS: B AMB: 50°C DUTY: CONT ENCLOSURE: ODP THERMALLY PROTECTED		NOTAS: 1. ACABADO DE PINTURA ES NEGRO SATIN. 2. LLAVES PLANAS DE .44[11.1] SOBRE LA FLECHA PARA ACCESO A ESTA LLAVE PLANA REMOVER LA CUBIERTA. 3. EXTENSION DE FLECHA DE ACERO INOXIDABLE 4. LIMITES DE AMPLITUD DE VIBRACION MEDIDOS EN LA CAVIDAD LA CAVIDAD DEL BALERO=.001[.02].

A

A

PERFORMANCE CURVE		APPROVED SAMPLE		CARACTERISTICAS DE GEOMETRIA Y SIMBOLOS □ PLANICIDAD — RECTITUD ∠ ANGULARIDAD ⊥ PERPENDICULARIDAD (A ESCUADRA) // PARALELISMO ○ REDONDEZ (CIRCULARIDAD) ⊘ CILINDRICIDAD △ PERFIL DE CUALQUIER SUPERFICIE ∩ PERFIL DE CUALQUIER LINEA ↑ VARIACION ⊕ POSICION REAL ◎ CONCENTRICIDAD ≡ SIMETRIA ASME Y14.5M 1994	A MENOS QUE SE ESPECIFIQUE DE OTRA MANERA, LAS TOLERANCIAS DE LAS DIMS: SON LAS SIGUIENTES: X XX XXX XXXX PULG ±.1 ±.02 ±.005 ±.0005 mm ±0.5 ±0.13 ±0.013 ANG. ±50 GRADOS ELIMINAR REBABAS Y ORILLAS FILOSAS DEL BORDE. PULG .003-.015 mm 0.1-0.4 FILETEAR ESQUINA: PULG .020 mm 0.5 MAQUINAR SUPERFICIES PULG 125 mm 3.2 DIMS METRICAS MOSTRADAS [PARENTESIS]	DIBUJADO POR: TH	10-27-2010	 REGAL-BELOIT CORPORATION	DESCRIPCION: MODEL-PFHP-48FR OUTLINE		
K48N2W1						APROBADO POR: TZ	10-27-2010			TAMAÑO: C	NUMERO DE DIBUJO: SK1202
UL COMPONENT		CSA				TERCER ANGULO DE PROYECCION 	FECHA EDS: 02-22-2008				
FILE#	CCN#	FILE#	GUIDE#				REV. FORMATO: G				
E25022	XEWR2	LR43341	4211-01								
CUSTOMER		DISTRIBUTION SERVICES									

4

3

2

1

4

3

2

1

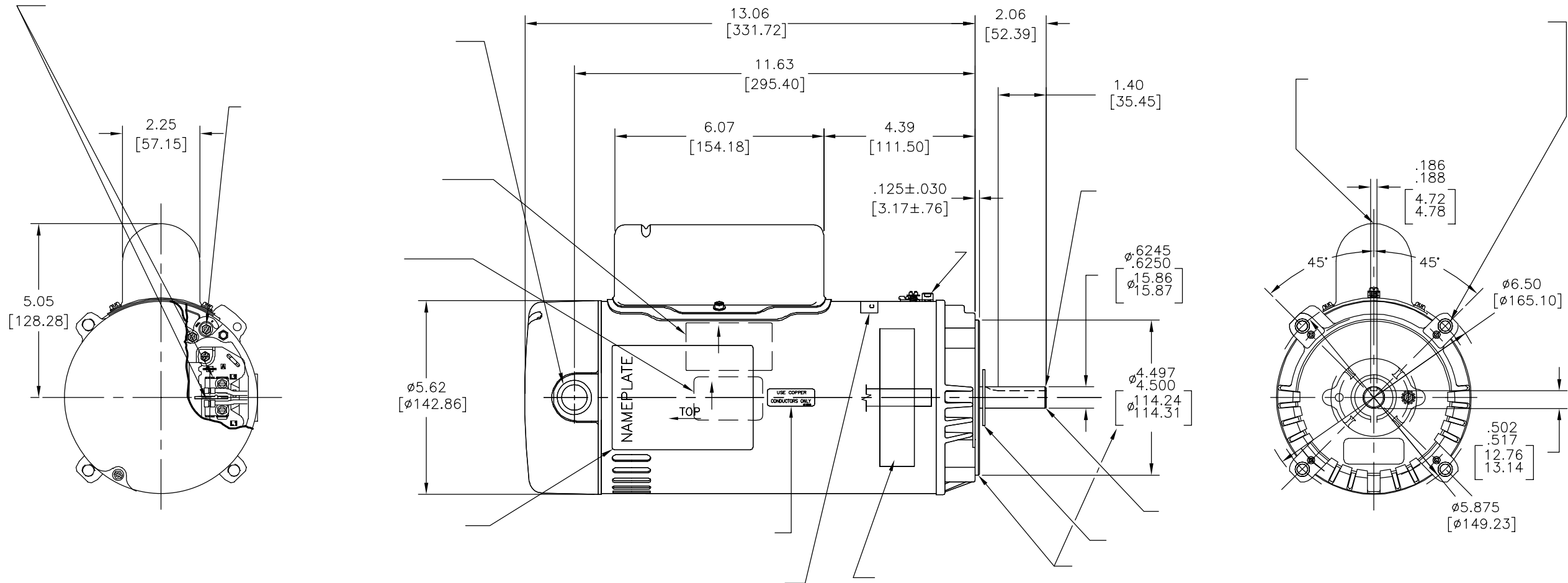
版本	ECO	编制	日期	批准	日期
B	0025579	E.SINECIO	04-25-2012	R.RASCON	04-25-2012

D

C

D

C



B

B

NAMEPLATE DATA	EXTERNAL CONNECTION DIAGRAM	NOTES
MODEL: K48N2N113 CUST PN: SK1202 HP: 2 SF: 1.3 ROT: CCWPE RPM: 3450 TYPE: UAK FORM: CODE: H VOLTS: 230 AMPS: FRAME: 56C MAX AMPS: 11.2 SF AMPS: — PH: 1 HZ: 60 INS: B AMB: 50°C DUTY: CONT ENCLOSURE: ODP THERMALLY PROTECTED		

A

A

PERFORMANCE CURVE	APPROVED SAMPLE	形位公差 □ 平面度 — 直线度 ∠ 倾斜度 ⊥ 垂直度 ∥ 平行度 ○ 圆度 ⊙ 圆柱度 ⌒ 面轮廓度 ⌒ 线轮廓度 ⌒ 圆跳动 ⊕ 位置度 ⊙ 同轴度 ≡ 对称度	除另有注明 尺寸公差如下: 英寸 X XX XXX XXXX 毫米 ±.1 ±.02 ±.005 ±.0005 毫米 ±0.5 ±0.13 ±0.013 角度 ±.50 度 清理毛刺和尖棱 英寸 .003-.015 毫米 0.1-0.4 内圆角 英寸 .020 毫米 0.5 表面粗糙度 英制 125 米制 3.2	绘图: TH 10-27-2010 批准: TZ 10-27-2010 第三角投影 图纸格式发布日期 02-22-2008 图纸格式版本 G 机密: 本图纸及相关信息所有权归REGAL-BELOIT CORPORATION。未经REGAL-BELOIT CORPORATION书面授权, 不得泄露、复制、传播或作其他用途。—版权所有	名称 MODEL-PFHP-48FR OUTLINE 图幅 C 图号 SK1202 比例 NONE 页号 1
K48N2W1					
UL COMPONENT	CSA				
FILE#	CCN#	FILE#	GUIDE#		
E25022	XEWR2	LR43341	4211-01		
CUSTOMER	DISTRIBUTION SERVICES				

4

3

2

1

ASME Y14.5M 1994

米制尺寸显示在[]