

PRODUCT INFORMATION PACKET

Model No: USQ1202
Catalog No: USQ1202
2 HP Pool Pump Motor, 1 phase, 3600 RPM, 230 V, 48Y Frame, ODP



Regal and are trademarks of Regal Rexnord Corporation or one of its affiliated companies.
©2022 Regal Rexnord Corporation, All Rights Reserved. MC017097E

Nameplate Specifications

Output HP	2 Hp	Output KW	1.5 kW
Frequency	60 Hz	Voltage	230 V
Current	10.4 A	Speed	3450 rpm
Service Factor	1.1	Phase	1
Duty	Continuous	Insulation Class	B
Frame	48Y	Enclosure	Open Drip Proof
Thermal Protection	Automatic	Ambient Temperature	50 °C
UL	Recognized	CSA	Y
Number of Speeds	1		

Technical Specifications

Electrical Type	Capacitor Start Capacitor Run	Poles	2
Rotation	Counterclockwise Pump End	Mounting	Square Flange
Motor Orientation	Horizontal	Drive End Bearing	Ball
Opp Drive End Bearing	Ball	Frame Material	Rolled Steel
Shaft Type	1/2 THREADS	Overall Length	13.94 in
Frame Length	10.06 in	Shaft Diameter	0.625 in
Shaft Extension	0.906 in		
Outline Drawing	USQ1202	Connection Drawing	627103-007

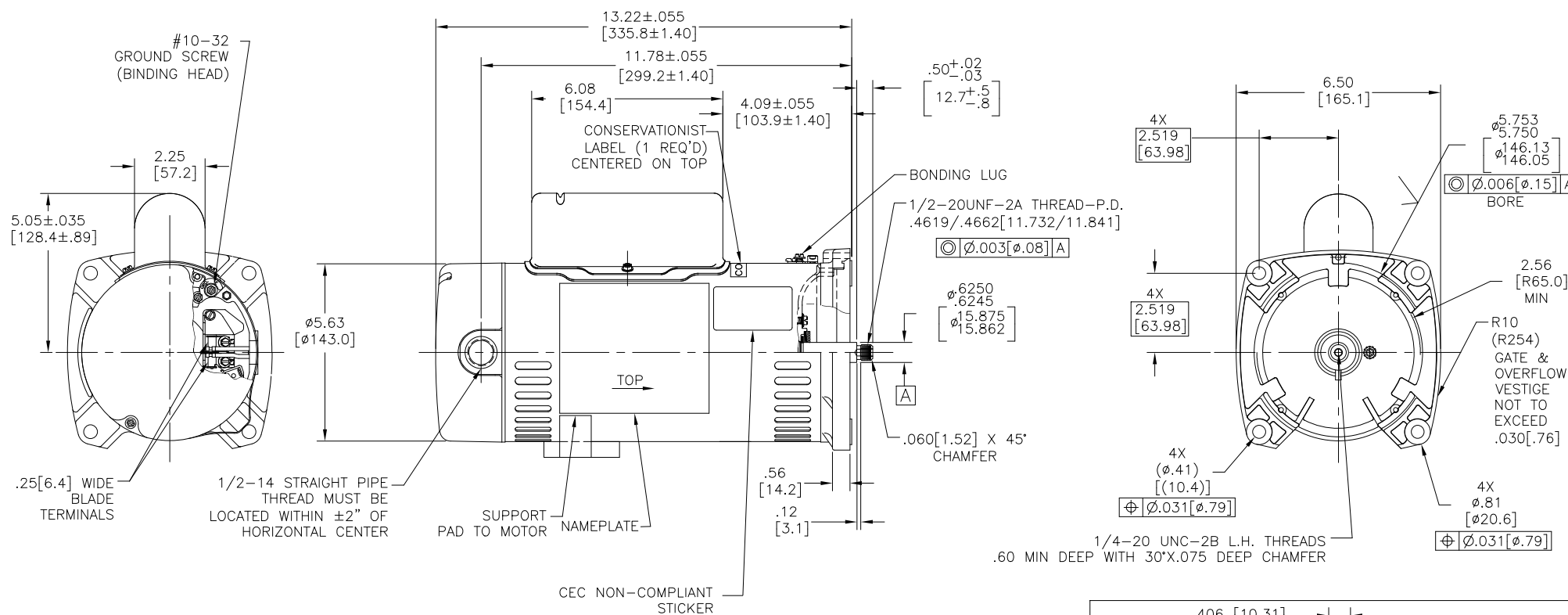
This is an uncontrolled document once printed or downloaded and is subject to change without notice. Date Created:05/10/2022

D

C

D

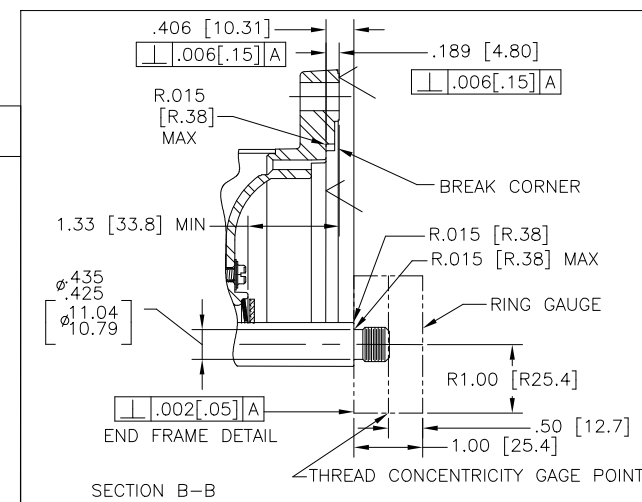
C



B

B


NAMEPLATE DATA	EXTERNAL CONNECTION DIAGRAM	NOTES
MODEL: K48M2PA105C5 CUST PN: USQ1202 HP: 2.0 SF: 1.10 ROT: CCWPE RPM: 3450 TYPE: UAK FORM: VOLTS: 230 AMPS: MAX AMPS: 10.4 SF AMPS: - PH: 1 INS: B DUTY: CONT ENCLOSURE: ODP THERMALLY PROTECTED	<p>USE COPPER CONDUCTORS ONLY. INSTALL MOTOR WITH VENTS DOWN. ACCEPTABLE FOR FIELD WIRING</p>	<ol style="list-style-type: none">1. FINISH PAINT TO BE BLACK.2. .44[11.2] WRENCH FLATS ON SHAFT-FOR ACCESS TO THIS WRENCH FLAT REMOVE END COVER.3. STAINLESS STEEL SHAFT EXTENSION.4. LIMITS ON AMPLITUDE OF VIBRATION MEASURED AT BEARING HOUSING = .001[.03]5. CAPACITOR HOUSING TO BE LOCATED WITHIN ±2.5" OF VERTICAL C OF END FRAME (PUMP END).6. CTQ REQUIREMENT SEE EP000105-008.7. RoHS & REACH REQUIREMENT SEE EP000014.



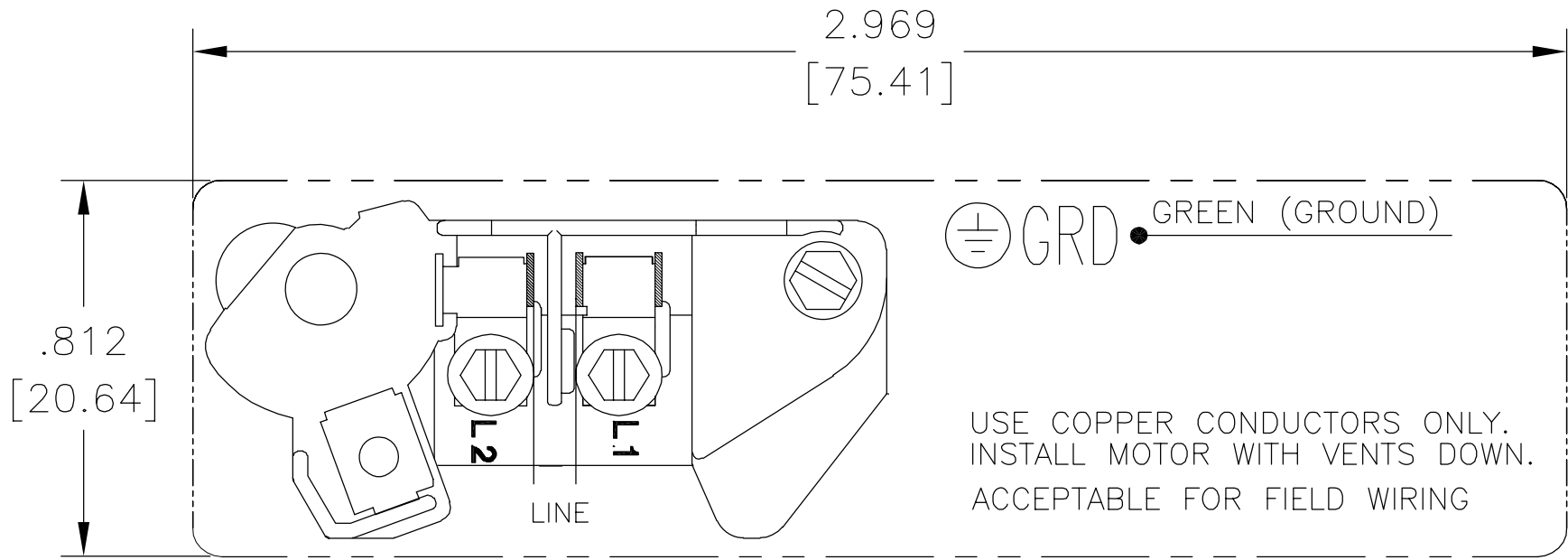
A

A

PERFORMANCE CURVE		APPROVED SAMPLE	
K48M2W2			
UL COMPONENT		CSA	
FILE#	CCN#	FILE#	GUIDE#
E25022	XEWR2	LR43341	4211-01
CUSTOMER	DISTRIBUTION SERVICES		

CRITICAL TO QUALITY CHARACTERISTICS(CTQs)	DRAWING REVISION	REVISION BY	DATE	TOLERANCES UNLESS OTHERWISE SPECIFIED			DRAWN BY:	 REGAL ™ Regal Beloit America, Inc.	DESCRIPTION	MODEL-PFHP-48FR OUTLINE	SIZE/DWG NO	SHEET			
(P) PROCESS	L	HAIXIA ZHANG	04-18-2022	DEC.	INCH	mm	ANGLE						JLG	DATE:	05-12-2009
(E) ENGINEERING	ECR-0216845	APPROVED BY	DATE	X	±0.02	[±0.51]	±0.5°						APPROVED BY:		
(A) APPLICATION	ECR DESCRIPTION	TRISTIA ZHAO	04-18-2022	-XX	±0.0005	[±0.127]									
(R) REGULATORY	SEE ECR	COPYRIGHT REGAL, BELLOIT AMERICA, INC. ALL RIGHTS RESERVED.			XXXX	±0.0005	[±0.0127]	DATE:							
(L) LIFE		PROPRIETARY AND CONFIDENTIAL INFORMATION - THIS DOCUMENT IS THE PROPERTY OF REGAL BELLOIT AMERICA, INC. AND CONTAINS OWNERS PROPRIETARY INFORMATION. ANY PERSON, CORPORATION OR OTHER FIRM RECEIVING IT IS DEEMED TO BE RECEIVING IT TO AGREE THAT IT, AND/OR ANY PART OF IT, SHALL NOT BE DISCLOSED TO ANY PERSON, CORPORATION OR OTHER ENTITY, DUPLICATED, AND/OR USED, EXCEPT AS EXPRESSLY PROVIDED IN WRITING IN ADVANCE BY OWNER. IT SHALL BE RETURNED TO OWNER, UPON REQUEST, IF IT MAY BE SUBJECT TO CERTAIN RESTRICTIONS UNDER APPLICABLE EXPORT CONTROL LAWS AND REGULATIONS.			REMOVE BURRS & BREAK SHARP EDGES .003/.015 [Ø.076/.381]	THIRD ANGLE PROJECTION	PROCESS/FINISH	MATERIAL		USQ1202					
					mm SHOWN IN [BRACKETS]	INCH 125 [3.175] mm 3/32									


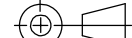
REV	ECO	REV BY	DATE	APPD	DATE
B	0001487	D.MUÑOZ	04-13-2009	M.ARGUELLES	04-13-2009



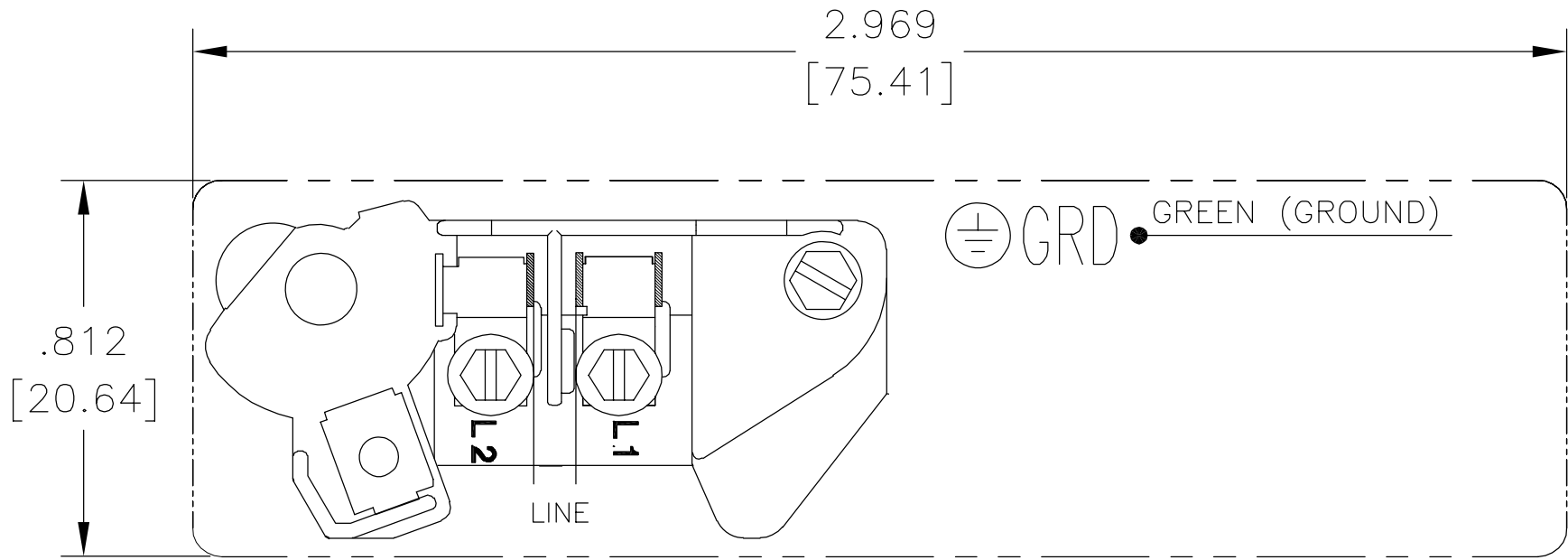
230 VOLTAGE — SINGLE SPEED

NOTE:

1. FOR USE WITH 616231 NAME PLATE BLANK.
2. — — — — — INDICATES DIMENSIONAL LIMITS.
3. DIE MUST PRODUCE A LEGIBLE IMPRESSION.

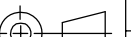
GEOMETRIC CHARACTERISTICS & SYMBOLS ∇ FLATNESS — STRAIGHTNESS ∠ ANGULARITY ⊥ PERPENDICULARITY (SQUARENESS) // PARALLELISM ○ ROUNDNESS (CIRCULARITY) ⊘ CYLINDRICITY △ PROFILE OF ANY SURFACE ⌒ PROFILE OF ANY LINE ↑ RUNOUT ⊕ TRUE POSITION ◎ CONCENTRICITY ≡ SYMMETRY	UNLESS OTHERWISE SPECIFIED DIM. TOLERANCES ARE AS FOLLOWS: <div>INCH X XX XXX XXXX ±.1 ±.02 ±.005 ±.0005</div> <div>mm ±0.5 ±0.13 ±0.013</div> <div>ANG. ±.50 DEG</div> <div>REMOVE BURRS & BREAK SHARP EDGES: INCH .003–.015 mm 0.1–0.4</div> <div>CORNER FILLETS TO: INCH .020 mm 0.5</div> <div>MACHINE SURFACES: INCH 125 mm 3.2</div> <div>METRIC DIMS. SHOWN IN [BRACKETS]</div>	DR BY: Daniel Muñoz	04–13–2009	 ELECTRICAL PRODUCTS COMPANY <small>innovation has a name.</small> <small>A DIVISION OF A. O. SMITH CORPORATION</small>		
		APPD:		DESCRIPTION CONNECTION DIAGRAM EXTERNAL		
		THIRD ANGLE PROJECTION 	EDS DATE 02–22–2009 FORMAT REV F	SIZE A DWG NO 627103–007		
		CONFIDENTIAL: THIS DRAWING AND ITS INFORMATION ARE THE EXCLUSIVE AND CONFIDENTIAL PROPERTY OF A.O. SMITH CORP. AND ARE NOT TO BE DISCLOSED, DUPLICATED, DISTRIBUTED OR OTHERWISE USED WITHOUT THE WRITTEN CONSENT OF A.O. SMITH CORP. –ALL RIGHTS RESERVED. ASME Y14.5M 1994			SCALE NONE	SHEET 1

REVISION:	ECO	REVISADO POR:	FECHA:	APROBADO POR:	FECHA:
B	0001487	D.MUÑOZ	04-13-2009	M.ARGUELLES	04-13-2009

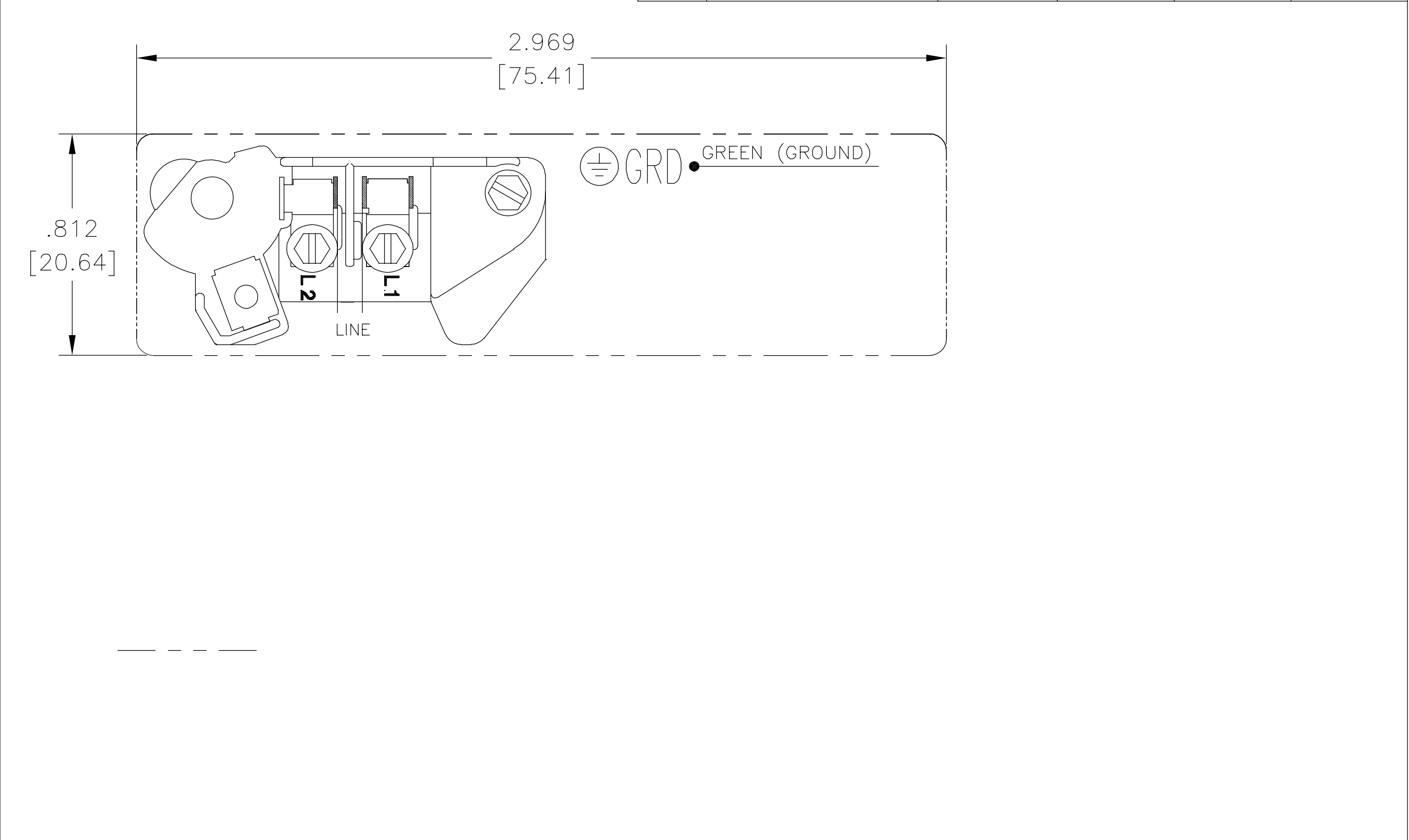


VOLTAJE 230 – VELOCIDADA SENCILLA

- NOTAS:
1. PARA USARSE CON LA PLACA DE DATOS EN BLANCO 616231.
 2. — — — — — INDICA LIMITES DIMENSIONALES.
 3. EL DADO DEBE PRODUCIR UNA IMPRESION LEGIBLE.

CARACTERISTICAS DE GEOMETRIA Y SIMBOLOS ∇ PLANICIDAD — RECTITUD ∠ ANGULARIDAD ⊥ PERPENDICULARIDAD (A ESCUADRA) // PARALELISMO ○ REDONDEZ (CIRCULARIDAD) ⊘ CILINDRICIDAD ⌒ PERFIL DE CUALQUIER SUPERFICIE ⌒ PERFIL DE CUALQUIER LINEA ↑ VARIACION ⊕ POSICION REAL ◎ CONCENRICIDAD = SIMETRIA	A MENOS QUE SE ESPECIFIQUE DE OTRA MANERA, LAS TOLERANCIAS DE LAS DIMS; SON LAS SIGUIENTES: X XX XXX XXXX PULG ±.1 ±.02 ±.005 ±.0005 mm ±0.5 ±0.13 ±0.013 ANG. ±.50 GRADOS ELIMINAR REBABAS Y ORILLAS FILOSAS DEL BORDE. PULG .003-.015 mm 0.1-0.4 FILETEAR ESQUINA: PULG .020 mm 0.5 MAQUINAR SUPERFICIES PULG 125 mm 3.2 DIMS METRICAS MOSTRADAS [PARENTESIS]	DIBUJADO POR: Daniel Muñoz		04-13-2009		<div>ACSmith Innovation has a name.</div> <div>ELECTRICAL PRODUCTS COMPANY A DIVISION OF A. O. SMITH CORPORATION</div>			
		APROBADO POR:				DESCRIPCION: CONNECTION DIAGRAM EXTERNAL			
		TERCER ANGULO DE PROYECCION				FECHA EDS: 02-22-2009 REV. FORMATO: F		TAMAÑO: A	NUMERO DE DIBUJO: 627103-007
		CONFIDENCIAL: ESTE DIBUJO Y SU INFORMACION SON PROPIEDAD DE USO EXCLUSIVO Y CONFIDENCIAL DE A.O.SMITH CORP. Y NO DEBERAN SER REVELADOS, DUPLICADOS, DISTRIBUIDOS O USARSE DE OTRA MANERA SIN EL CONSENTIMIENTO ESCRITO DE A.O. SMITH CORP. -TODOS LOS DERECHOS RESERVADOS.ASME Y14.5M 1994				ESCALA:NONE			HOJA: 1

版本	ECO	编制	日期	批准	日期
B	0001487	D.MUÑOZ	04-13-2009	M.ARGUELLES	04-13-2009



形位公差 □ 平面度 — 直线度 ∠ 倾斜度 ⊥ 垂直度 // 平行度 ○ 圆度 ⊘ 圆柱度 ⌒ 面轮廓度 ⌒ 线轮廓度 ↗ 圆跳动 ⊕ 位置度 ◎ 同轴度 ≡ 对称度	除另有注明 尺寸公差如下:	绘图:	Daniel Muñoz	04-13-2009	ACSmith Innovation has a name. ELECTRICAL PRODUCTS COMPANY A DIVISION OF A. O. SMITH CORPORATION				
	英寸 X XX XXX XXXX ±.1 ±.02 ±.005 ±.0005 毫米 ±0.5 ±0.13 ±0.013 角度 ±.50 度 清理毛刺和尖棱 英寸 .003-.015 毫米 0.1-0.4 内圆角 英寸 .020 毫米 0.5 表面粗糙度 英制 125 米制 3.2 米制尺寸显示在[]	批准:				名称			
		第三角投影		图纸格式发布日期 02-22-2009	CONNECTION DIAGRAM EXTERNAL				
				图纸格式版本 F					
	机密: 本图纸及相关信息所有权归A. O. SMITH公司所有。 未经A. O. SMITH公司书面授权, 不得泄露、复制、传播或作 其他用途。—版权所有					图幅	A	图号	627103-007
						比例	NONE		页号 1
	ASME Y14.5M 1994								