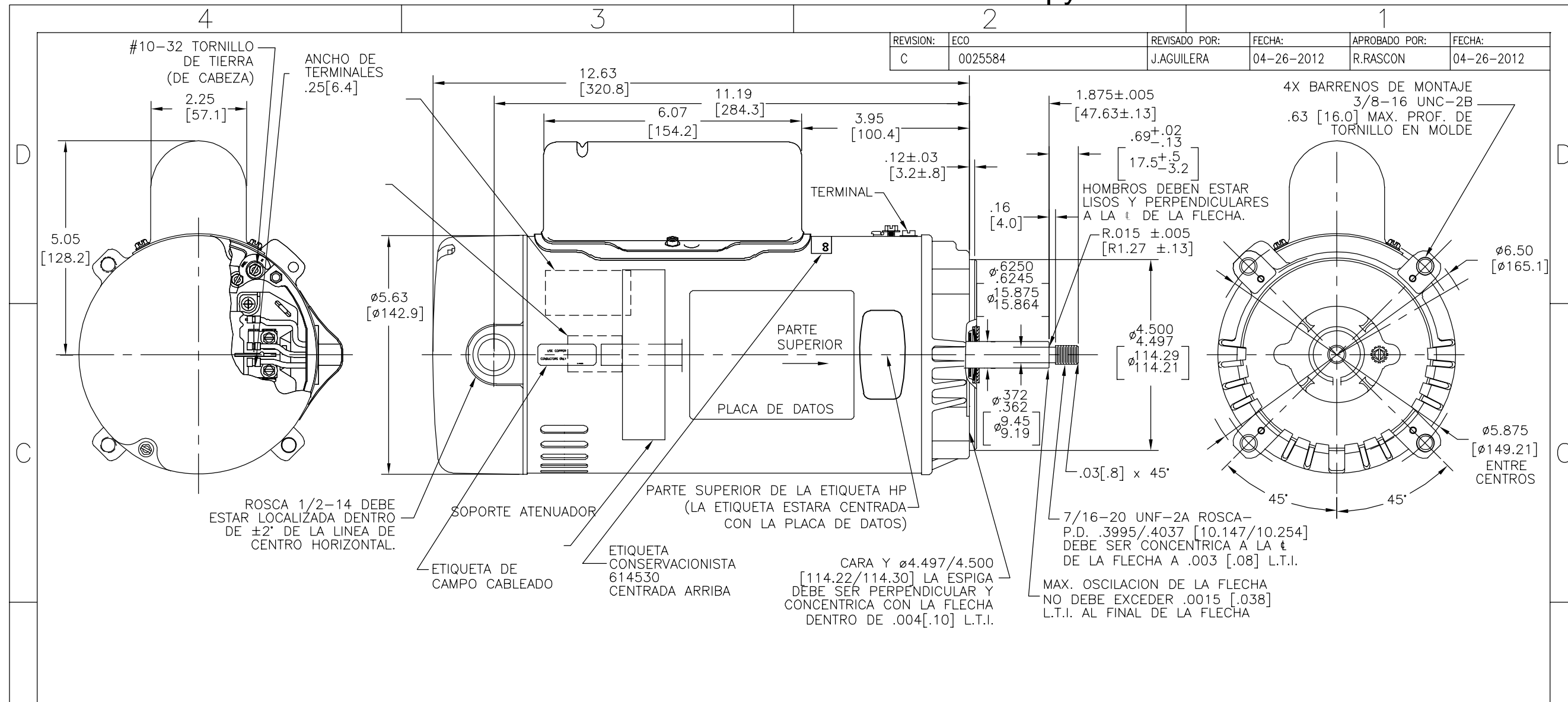


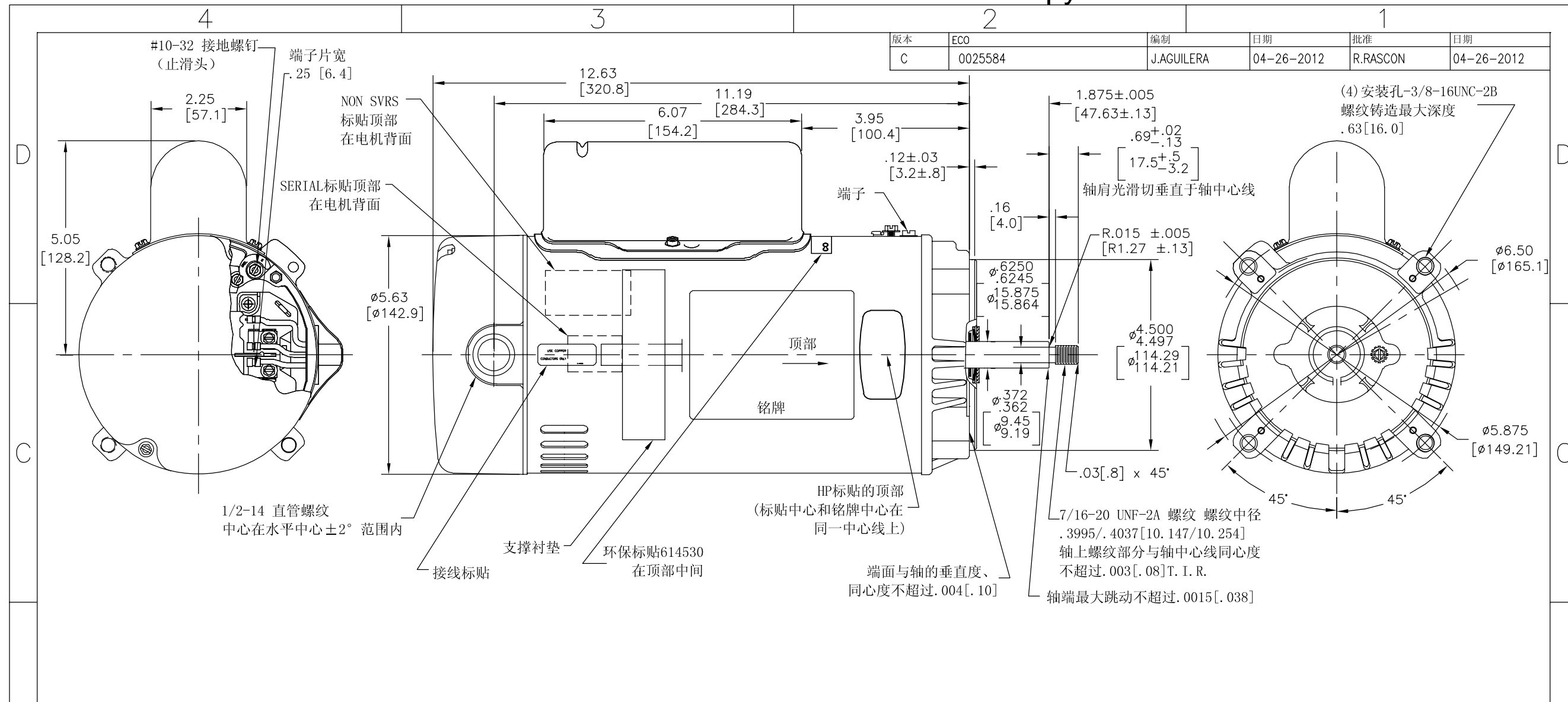
NAMEPLATE DATA	EXTERNAL CONNECTION DIAGRAM	NOTES
MODEL: K48M2N110C2 CUST PN: UST1202 HP: 2 SF: 1.1 ROT: CCWPE RPM: 3450 TYPE: UAK CODE: H FORM: FRAME: 56J VOLTS: 115/208-230 AMPS: MAX AMPS: 19.6/10.4-9.8 SF AMPS: - PH: 1 HZ: 60 INS: B AMB: 50°C DUTY: CONT ENCLOSURE: ODP THERMALLY PROTECTED		1. FINISH PAINT TO BE SATIN BLACK. 2. .44[11.1] WRENCH FLATS ON SHAFT-FOR ACCESS TO THIS WRENCH FLAT REMOVE END COVER. 3. STAINLESS STEEL SHAFT EXT. 4. LIMITS ON AMPLITUDE OF VIBRATION MEASURED AT BEARING HOUSING = .001[.03]. 5. CONNECTED FOR HIGH VOLTAGE QUICK VOLTAGE CHANGE PLUG INCLUDED ON THE TERMINAL BOARD.

PERFORMANCE CURVE K48M2W16 UL COMPONENT E25022 FILE# E25022 CCN# XEW2 CUSTOMER DIST. SERVICES	APPROVED SAMPLE CSA FILE# LR43341 GUIDE# 4211-01	GEOMETRIC CHARACTERISTICS & SYMBOLS □ FLATNESS - STRAIGHTNESS ∠ ANGULARITY ⊥ PERPENDICULARITY (SQUARENESS) ∥ PARALLELISM ○ ROUNDNESS (CIRCULARITY) ⌀ CYLINDRICITY △ PROFILE OF ANY SURFACE ∩ PROFILE OF ANY LINE ↑ RUNOUT ⊕ TRUE POSITION ⊙ CONCENTRICITY = SYMMETRY ASME Y14.5M 1994	UNLESS OTHERWISE SPECIFIED DIM. TOLERANCES ARE AS FOLLOWS: INCH X XX XXX XXXX ±.1 ±.02 ±.005 ±.0005 mm ±0.5 ±0.13 ±0.013 ANG. ±.50 DEG REMOVE BURRS & BREAK SHARP EDGES: INCH .003-.015 mm 0.1-0.4 CORNER FILLETS TO: INCH .020 mm 0.5 MACHINE SURFACES: INCH 125 mm 3.2 METRIC DIMS. SHOWN IN [BRACKETS]	DR BY: LC 06-19-2009 APPD: LX 06-19-2009 THIRD ANGLE PROJECTION EDS DATE 11-11-2011 FORMAT REV G CONFIDENTIAL: THIS DRAWING AND ITS INFORMATION ARE THE EXCLUSIVE AND CONFIDENTIAL PROPERTY OF REGAL-BELOIT CORPORATION AND ARE NOT TO BE DISCLOSED, DUPLICATED, DISTRIBUTED OR OTHERWISE USED WITHOUT THE WRITTEN CONSENT OF REGAL-BELOIT CORPORATION. -ALL RIGHTS RESERVED.	DESCRIPTION MODEL-PFHP-48FR OUTLINE SIZE C DWG NO UST1202 SCALE NONE SHEET 1
---	--	--	---	---	---



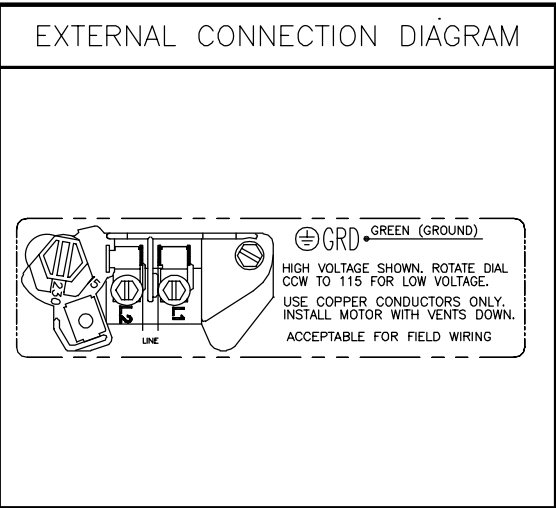
NAMEPLATE DATA		EXTERNAL CONNECTION DIAGRAM	NOTES
MODEL: K48M2N110C2 CUST PN: UST1202 HP: 2 SF: 1.1 ROT: CCWPE RPM: 3450 TYPE: UAK CODE: H FORM: FRAME: 56J VOLTS: 115/208-230 AMPS: MAX AMPS: 19.6/10.4-9.8 SF AMPS: - PH: 1 HZ: 60 INS: B AMB: 50°C DUTY: CONT ENCLOSURE: ODP THERMALLY PROTECTED		<p>GRD GREEN (GROUND) HIGH VOLTAGE SHOWN. ROTATE DIAL CCW TO 115 FOR LOW VOLTAGE. USE COPPER CONDUCTORS ONLY. INSTALL MOTOR WITH VENTS DOWN. ACCEPTABLE FOR FIELD WIRING</p>	1. PINTURA PARA ACABADO SERA NEGRO SATINADO. 2. .44[11.1] LLAVE PLANA EN FLECHA- PARA TENER ACCESO A ESTA LLAVE PLANA REMOVER LA TAPA. 3. EXTENSION DE FLECHA DE ACERO INOXIDABLE. 4. LIMITS ON AMPLITUDE OF VIBRATION MEASURED AT BEARING HOUSING = .001[.03]. 5. CONNECTED FOR HIGH VOLTAGE QUICK VOLTAGE CHANGE PLUG INCLUDED ON THE TERMINAL BOARD.

PERFORMANCE CURVE	APPROVED SAMPLE	CARACTERISTICAS DE GEOMETRIA Y SIMBOLOS □ PLANICIDAD - RECTITUD < ANGULARIDAD ⊥ PERPENDICULARIDAD (A ESQUADRA) // PARALELISMO ○ REDONDEZ (CIRCULARIDAD) ∅ CILINDRICIDAD △ PERFIL DE CUALQUIER SUPERFICIE ∩ PERFIL DE CUALQUIER LINEA ↑ VARIACION ⊕ POSICION REAL ⊙ CONCENTRICIDAD = SIMETRIA	A MENOS QUE SE ESPECIFIQUE DE OTRA MANERA, LAS TOLERANCIAS DE LAS DIMS; SON LAS SIGUIENTES: PULG ±.1 ±.02 ±.005 ±.0005 mm ±0.5 ±0.13 ±0.013 ANG. ±50 GRADOS ELIMINAR REBABAS Y ORILLAS FILOSAS DEL BORDE. PULG .003-.015 mm 0.1-0.4 FILETEAR ESQUINA: PULG .020 mm 0.5 MAQUINAR SUPERFICIES PULG 125 mm .32	DIBUJADO POR: LC	06-19-2009	DESCRIPCION: MODEL-PFHP-48FR OUTLINE TAMAÑO: C NUMERO DE DIBUJO: UST1202 ESCALA: NONE HOJA: 1
K48M2W16	CSA			TERCER ANGULO DE PROYECCION CONFIDENCIAL: ESTE DIBUJO Y SU INFORMACION SON PROPIEDAD DE USO EXCLUSIVO Y CONFIDENCIAL DE REGAL-BELOIT CORPORATION. Y NO DEBERAN SER REVELADOS, DUPLICADOS, DISTRIBUIDOS O USARSE DE OTRA MANERA SIN EL CONSENTIMIENTO ESCRITO DE REGAL-BELOIT CORPORATION. -TODOS LOS DERECHOS RESERVADOS.	APROBADO POR: LX	
UL COMPONENT	CSA	DIMS METRICAS MOSTRADAS [PARENTESIS]		FECHA EDS: 11-11-2011		
FILE#	CCN#	FILE#	GUIDE#	REV. FORMATO: G		
E25022	XEWR2	LR43341	4211-01			
CUSTOMER	DIST. SERVICES					



版本	ECO	编制	日期	批准	日期
C	0025584	J.AGUILERA	04-26-2012	R.RASCON	04-26-2012

NAMEPLATE DATA	
MODEL: K48M2N110C2	
CUST PN: UST1202	
HP: 2	SF: 1.1
ROT: CCWPE	
RPM: 3450	
TYPE: UAK	CODE: H
FORM:	FRAME: 56J
VOLTS: 115/208-230	
AMPS:	
MAX AMPS: 19.6/10.4-9.8	
SF AMPS: -	
PH: 1	HZ: 60
INS: B	AMB: 50°C
DUTY: CONT	
ENCLOSURE: ODP	
THERMALLY PROTECTED	



- NOTES
1. 表面为黑色光漆。
 2. 移去端盖可见.44[11.1]的扁身。
 3. 不锈钢轴伸。
 4. 在轴承室位置测量振动极限不超过.001[.03]
 5. 电机接高电压.快速电压转换插销在端子上。

PERFORMANCE CURVE	APPROVED SAMPLE		
K48M2W16			
UL COMPONENT	CSA		
FILE#	CCN#	FILE#	GUIDE#
E25022	XEWR2	LR43341	4211-01
CUSTOMER	DIST. SERVICES		

形位公差

- 平面度
- 直线度
- ∠ 倾斜度
- ⊥ 垂直度
- // 平行度
- 圆度
- ⊘ 圆柱度
- △ 面轮廓度
- ∩ 线轮廓度
- ↗ 圆跳动
- ⊕ 位置度
- ⊙ 同轴度
- ≡ 对称度

ASME Y14.5M 1994

除另有注明尺寸公差如下:

英寸	±.1	±.02	±.005	±.0005
毫米	±0.5	±0.13	±0.013	

角度 ±.50 度
清理毛刺和尖棱
英寸 .003-.015 毫米 0.1-0.4
内圆角
英寸 .020 毫米 0.5
表面粗糙度
英制 125 米制 3.2
米制尺寸显示在 []

绘图: LC 06-19-2009

批准: LX 06-19-2009

第三角投影

图密: 本图纸及相关信息所有权归REGAL-BELOIT CORPORATION. 未经REGAL-BELOIT CORPORATION书面授权, 不得泄露、复制、传播或作其他用途。一版权所有

名称: MODEL-PFHP-48FR OUTLINE

图幅: C 图号: UST1202

比例: NONE 页号: 1