

# PRODUCT INFORMATION PACKET



Model No: STS1102RV1

Catalog No: STS1102RV1

Pool Pump Motor, 1.0/0.13 HP, 1 Ph, 60 Hz, 230 V, 3600 RPM, 56J Frame, ODP



Regal and Century are trademarks of Regal Rexnord Corporation or one of its affiliated companies.

©2022 Regal Rexnord Corporation, All Rights Reserved. MC017097E





### Nameplate Specifications

|                    |             |                     |                 |
|--------------------|-------------|---------------------|-----------------|
| Output HP          | 1.0/0.13 Hp | Output KW           | 0.75 kW         |
| Frequency          | 60 Hz       | Voltage             | 230 V           |
| Current            | 7.0/2.3 A   | Speed               | 3450/1725 rpm   |
| Service Factor     | 1.5         | Phase               | 1               |
| Duty               | Continuous  | Insulation Class    | B               |
| Frame              | 56J         | Enclosure           | Open Drip Proof |
| Thermal Protection | Automatic   | Ambient Temperature | 50 °C           |
| UL                 | Recognized  | CSA                 | Y               |
| Number of Speeds   | 2           |                     |                 |

### Technical Specifications

|                   |                                     |                       |                           |
|-------------------|-------------------------------------|-----------------------|---------------------------|
| Electrical Type   | Psc Low Speed, Cap Start High Speed | Starting Method       | Across The Line           |
| Poles             | 2                                   | Rotation              | Counterclockwise Pump End |
| Mounting          | Round                               | Motor Orientation     | Horizontal                |
| Drive End Bearing | Ball                                | Opp Drive End Bearing | Ball                      |
| Frame Material    | Rolled Steel                        | Shaft Type            | 7/16 THREAD               |
| Overall Length    | 15.13 in                            | Frame Length          | 9.19 in                   |
| Shaft Diameter    | 0.625 in                            | Shaft Extension       | 2.568 in                  |
| Outline Drawing   | STS1102RV1                          | Connection Drawing    | 627103-003                |

This is an uncontrolled document once printed or downloaded and is subject to change without notice. Date Created:11/28/2022

4

3

2

1

D

C

B

A

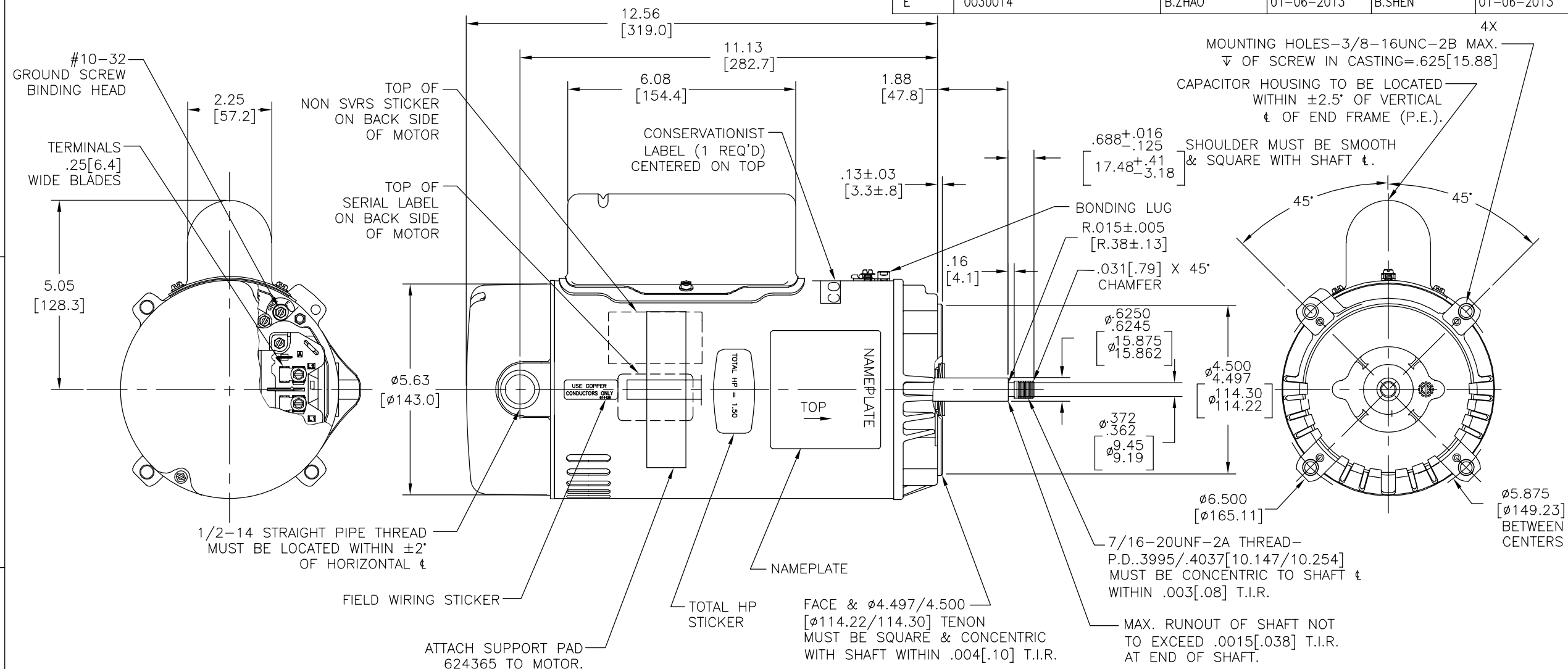
D

C



B

A

| REV | ECO     | REV BY | DATE       | APPD   | DATE       |
|-----|---------|--------|------------|--------|------------|
| E   | 0030014 | B.ZHAO | 01-06-2013 | B.SHEN | 01-06-2013 |



| NAMEPLATE DATA  | EXTERNAL CONNECTION DIAGRAM   | NOTES  |
|---|---|--|
| MODEL: K48A74A01<br>CUST PN: STS1102RV1<br>HP: 1.0/0.13 SF: 1.5<br>ROT: CCWPE<br>RPM: 3450/1725<br>TYPE: F/C CODE: J<br>FORM: FRAME: 56J<br>VOLTS: 230<br>AMPS:<br>MAX AMPS: 7.0/2.3<br>SF AMPS: -<br>PH: 1 HZ: 60<br>INS: B AMB: 50°C<br>DUTY: CONT<br>ENCLOSURE: ODP<br>THERMALLY PROTECTED | <p>USE COPPER CONDUCTORS ONLY. INSTALL MOTOR WITH VENTS DOWN. ACCEPTABLE FOR FIELD WIRING</p> | <ol style="list-style-type: none"><li>FINISH PAINT TO BE PRIME COAT.</li><li>.44 [11.2] WRENCH FLATS ON SHAFT -FOR ACCESS TO THIS WRENCH FLAT REMOVE END COVER.</li><li>STAINLESS STEEL SHAFT EXT.</li><li>LIMITS ON AMPLITUDE OF VIBRATION MEASURED AT BEARING HOUSING=.001 [.03].</li><li>1.50 SF HP</li></ol> |

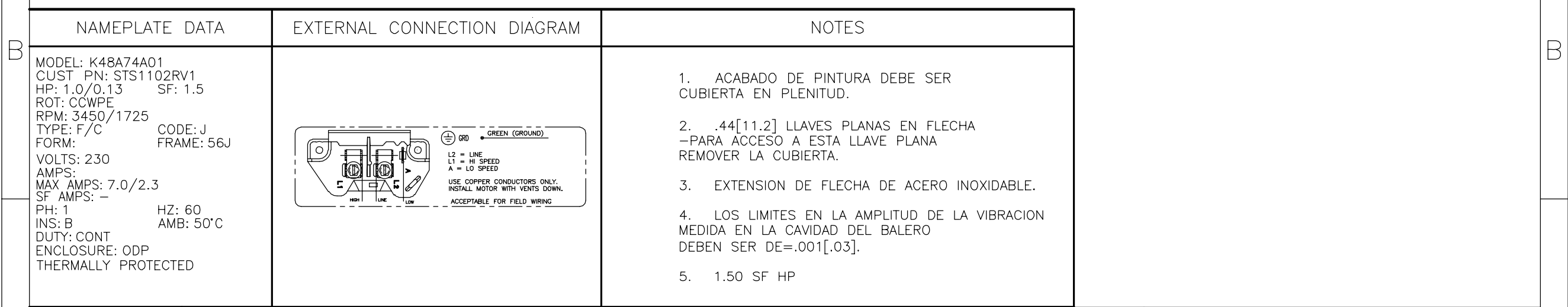
|                   |                       |                 |         |  |  |  |  |  |  |  |  |                          |  |
|-------------------|-----------------------|-----------------|---------|--|--|--|--|--|--|--|--|--------------------------|--|
| PERFORMANCE CURVE |                       | APPROVED SAMPLE |         | <div>GEOMETRIC CHARACTERISTICS &amp; SYMBOLS<br/>□ FLATNESS<br/>— STRAIGHTNESS<br/>∠ ANGULARITY<br/>⊥ PERPENDICULARITY (SQUARENESS)<br/>// PARALLELISM<br/>○ ROUNDNESS (CIRCULARITY)<br/>⊘ CYLINDRICITY<br/>△ PROFILE OF ANY SURFACE<br/>⌒ PROFILE OF ANY LINE<br/>⌀ RUNOUT<br/>⊕ TRUE POSITION<br/>⊙ CONCENTRICITY<br/>≡ SYMMETRY</div> <div>ASME Y14.5M 1994</div> |  | <div>UNLESS OTHERWISE SPECIFIED<br/>DIM. TOLERANCES ARE AS FOLLOWS:<br/><br/>INCH .1 .1 .02 .005 .0005<br/>mm .05 .05 .013 .013 .013<br/>ANG. ±.50 DEG<br/>REMOVE BURRS &amp; BREAK SHARP EDGES:<br/>INCH .003-.015 mm 0.1-0.4<br/>CORNER FILLETS TO:<br/>INCH .020 mm 0.5<br/>MACHINE SURFACES:<br/>INCH 125 mm 3.2</div> <div>METRIC DIMS. SHOWN IN [BRACKETS]</div> |  | DR BY: keyun.gong 09-25-2008   |  | <div> <b>REGAL-BELOIT CORPORATION</b></div> <div>DESCRIPTION</div> <div>MODEL-PFHP-48FR<br/>OUTLINE</div> |  |                          |  |
| K48L2W9           |                       | 0345591         |         |  |  |  |  | APPD: J.Reynolds 09-25-2008  |  |  |  | SIZE C DWG NO STS1102RV1 |  |
| UL COMPONENT      |                       | CSA             |         |  |  |  |  | THIRD ANGLE PROJECTION  EDS DATE 11-11-2011<br>FORMAT REV H   |  |  |  | SCALE NONE SHEET 1       |  |
| FILE#             | CCN#                  | FILE#           | GUIDE#  |  |  |  |  | CONFIDENTIAL: THIS DRAWING AND ITS INFORMATION ARE THE EXCLUSIVE AND CONFIDENTIAL PROPERTY OF REGAL-BELOIT CORPORATION AND ARE NOT TO BE DISCLOSED, DUPLICATED, DISTRIBUTED OR OTHERWISE USED WITHOUT THE WRITTEN CONSENT OF REGAL-BELOIT CORPORATION. -ALL RIGHTS RESERVED. |  |  |  |                          |  |
| E25022            | XEWR2                 | LR43341         | 4211-01 |  |  |  |  |  |  |  |  |                          |  |
| CUSTOMER          | DISTRIBUTION SERVICES |                 |         |  |  |  |  |  |  |  |  |                          |  |

4

3

2

1



|   |   |   |   |
|---|---|---|---|
| 4 | 3 | 2 | 1 |
|---|---|---|---|