

4

3

2

1

REV	ECO	REV BY	DATE	APPD	DATE
C	0025579	E.SINECIO	04-25-2012	R.RASCON	04-25-2012

D

D

C

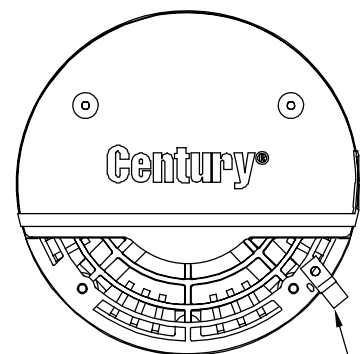
C

B

B

A

A



NON SVRS LABEL
ON BACK SIDE OF MOTOR
ABOVE SERIAL LABEL

TOP OF NAMEPLATE

SERIAL LABEL
AT 9:00 O'CLOCK

1/2-14 NPT
W/CAP

BONDING LUG

TOP OF
HORSEPOWER STICKER
ADHESIVE
WHEN REQ'D

TOP OF NAMEPLATE

8.072
[205.04]

14.600±.055
[370.84±1.40]

2.560±.034
[65.02±.86]

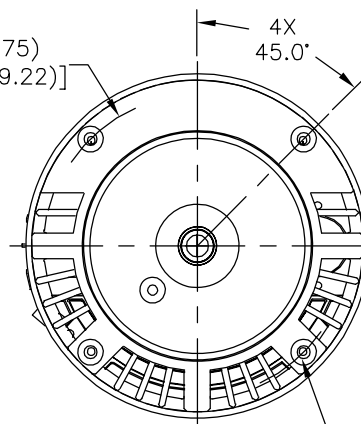
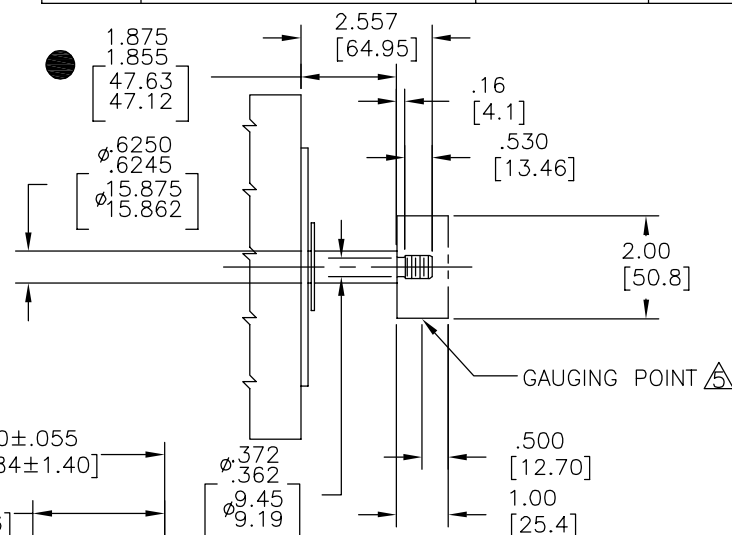
7.128
[181.06]

11.10
[281.9]

SLINGER

SHAFT DETAIL

8.50
[215.9]



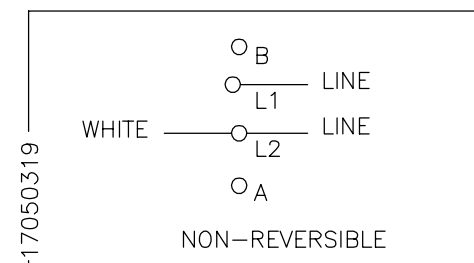
4X
3/8-16UNC-2B
7.75[19.1]

NAMEPLATE DATA

EXTERNAL CONNECTION DIAGRAM

NOTES

MODEL: 1936880J
CUST PN: SN1202
HP: 2.0 SF: 1.35
ROT: CCWPE
RPM: 3450
TYPE: CX CODE: F
FORM: FRAME: Y 56 J
VOLTS: 208-230
AMPS:
MAX AMPS:
SF AMPS: 13.0-11.8
PH: 1 HZ: 60
INS: B AMB: 50°
DUTY: CONT
ENCLOSURE: ODP
THERMALLY PROTECTED



- ⚠ PILOT DIAMETER IS CONCENTRIC WITH SHAFT CENTERLINE WITHIN .004[.10] T.I.R.
- ⚠ FACE OF MOUNTING FLANGE IS PERPENDICULAR TO SHAFT CENTERLINE WITHIN .004[.10] T.I.R.
- 3. SHAFT RUNOUT NOT TO EXCEED .002[.05] T.I.R.
- 4. FOR THREADED SHAFT EXT. MATING, PARTS SHOULD BE RELIEVED ONE THREAD TO CLEAR FILLET.
- 5. FOR THREADED SHAFT EXT. ECCENTRICITY OF THREADED PORTION OF SHAFT IS HELD WITHIN .004[.10] TOTAL GAUGE READING WITH THE INDICATOR ON O.D. OF GROUND RING GAGE AS SHOWN. THE GAGE BEING STATIONARY WITH RESPECT TO THE ROTOR.
- 6. END PLAY NOT TO EXCEED .010[.25] MEASURED WITH NO THRUST.
- ⚠ FRONT END FRAME TO BE ALIGNED WITH BACK END FRAME TO WITHIN ±1° RADIAL ALIGNMENT ±.060[±1.52]
- 8. ● = CRITICAL DIMENSION

PERFORMANCE CURVE

APPROVED SAMPLE

GEOMETRIC CHARACTERISTICS & SYMBOLS

UNLESS OTHERWISE SPECIFIED

DR BY:

APPD:

THIRD ANGLE PROJECTION

CONFIDENTIAL: THIS DRAWING AND ITS INFORMATION ARE THE EXCLUSIVE AND CONFIDENTIAL PROPERTY OF REGAL-BELOIT CORPORATION AND ARE NOT TO BE DISCLOSED, DUPLICATED, DISTRIBUTED OR OTHERWISE USED WITHOUT THE WRITTEN CONSENT OF REGAL-BELOIT CORPORATION. -ALL RIGHTS RESERVED.



REGAL-BELOIT CORPORATION

DESCRIPTION

MODEL-CFHP-56FR
OUTLINE

SIZE

DWG NO

SCALE

NONE

SHEET

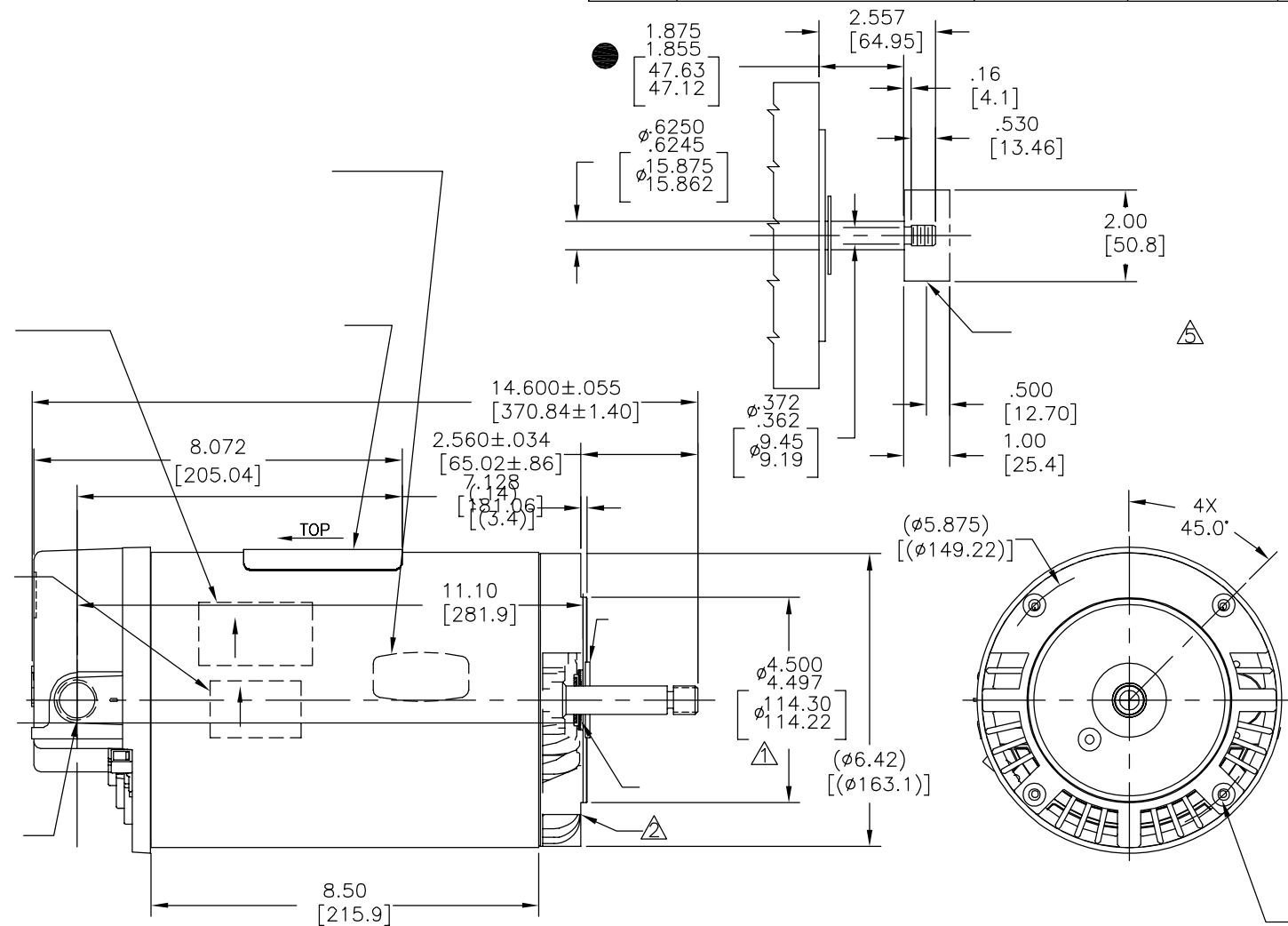
1



4

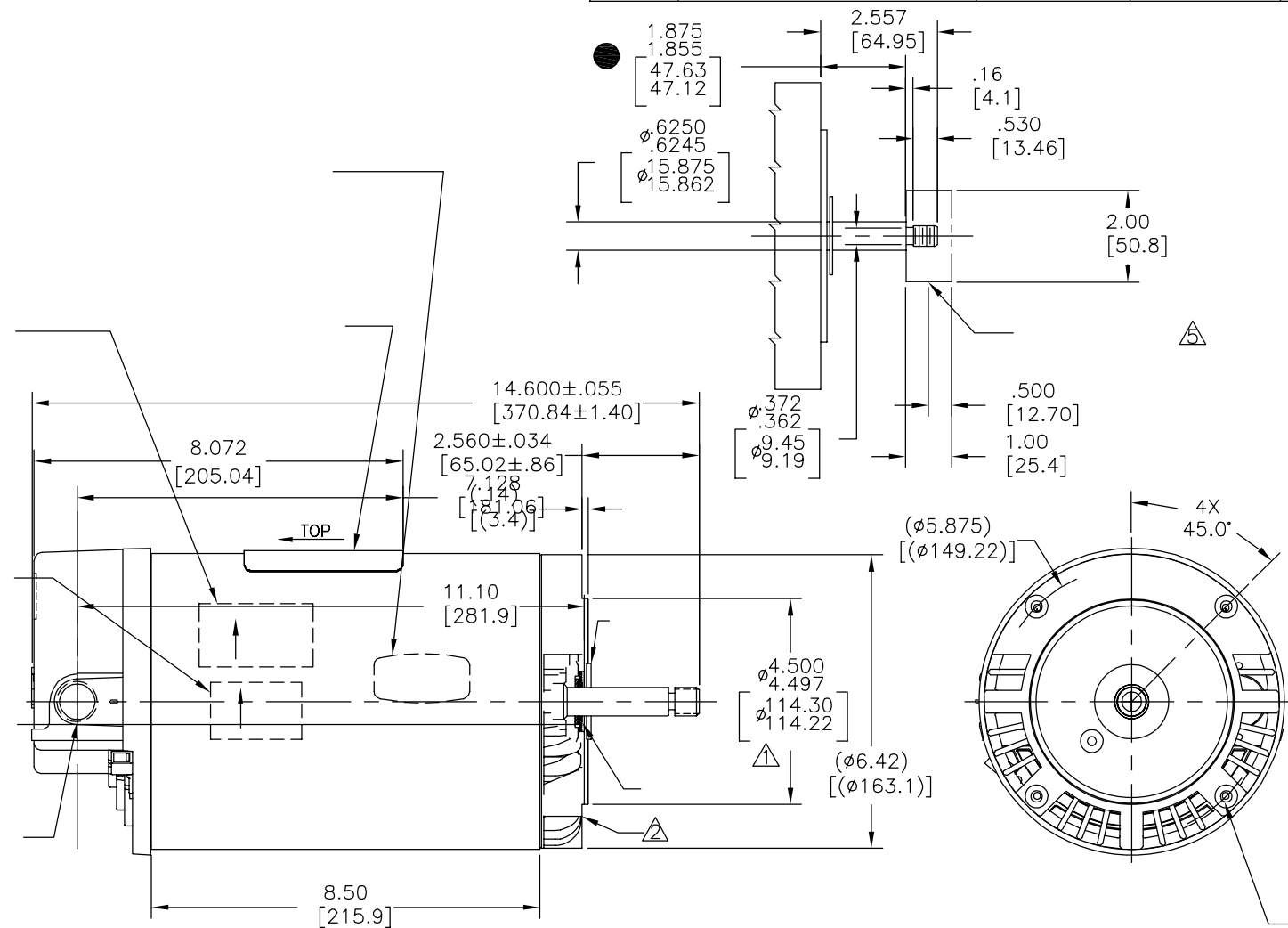
3

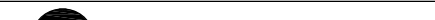

2

1



PERFORMANCE CURVE		APPROVED SAMPLE		CARACTERISTICAS DE GEOMETRIA Y SIMBOLOS / PLANICIDAD — RECTITUD ∠ ANGULARIDAD ⊥ PERPENDICULARIDAD (A ESCUADRA) // PARALELISMO ○ REDONDEZ (CIRCULARIDAD) ∅ CILINDRICIDAD △ PERFIL DE CUALQUIER SUPERFICIE ▴ PERFIL DE CUALQUIER LINEA † VARIACION ⊕ POSICION REAL ◎ CONCENTRICIDAD = SIMETRIA ASME Y14.5M 1994		A MENOS QUE SE ESPECIFIQUE DE OTRA MANERA, LAS TOLERANCIAS DE LAS DIMS. SON LAS SIGUIENTES: $\begin{matrix} \times & \times & \times \\ x & xx & xxx \\ y & yy & yyy \\ z & zz & zzz \end{matrix}$ PULG ±.1 ±.02 ±.005 ±.0005 mm ±.5 ±.013 ±.013 ANG. ±.50 GRADOS ELIMINAR REBABAS Y ORILLAS FILOSAS DEL BORDE. PULG .003—.015 mm 0.1—0.4 FILETEAR ESQUINA: PULG .020 mm 0.5 MAQUINAR SUPERFICIES PULG 125 mm 32		DIBUJADO POR: TH 10-27-2010 APROBADO POR: TZ 10-27-2010 TERCER ANGULO DE PROYECCION  FECHA EDS: 02-22-2008 REV. FORMATO: G CONFIDENCIAL: ESTE DIBUJO Y SU INFORMACION SON PROPIEDAD DE USO EXCLUSIVO Y CONFIDENCIAL DE REGAL-BELOIT CORPORATION. Y NO DEBERAN SER REVELADOS, Duplicados, DISTRIBUIDOS O USARSE DE OTRA MANERA SIN EL CONSENTIMIENTO ESCRITO DE REGAL-BELOIT CORPORATION. -TODOS LOS DERECHOS RESERVADOS.		<div> REGAL-BELOIT CORPORATION</div> <div>DESCRIPCION:</div> <div>MODEL-CFHP-56FR OUTLINE</div> <div>TAMAÑO: C NUMERO DE DIBUJO: SN1202</div> <div>ESCALA: NONE HOJA: 1</div>	
19238111											
UL COMPONENT		CSA									
FILE#	CCN#	FILE#	GUIDE#								
PENDING	PENDING	PENDING	PENDING								
CUSTOMER		DISTRIBUTION		ASME Y14.5M 1994		DIMES METRICAS MOSTRADAS [PARENTESIS]					



PERFORMANCE CURVE		APPROVED SAMPLE		<div>形位公差 □ 平面度 — 直线度 ∠ 倾斜度 ⊥ 垂直度 // 平行度 ○ 圆度 ⊙ 圆柱度 △ 面轮廓度 ⊂ 线轮廓度 ! 圆跳动 ⊕ 位置度 ◎ 同轴度 ≡ 对称度</div>	<div>除另有注明 尺寸公差如下: 英寸 X ±.1 XX ±.02 XXX ±.005 XXXX ±.0005 毫米 ±0.5 ±0.13 ±0.013 角度 ±.50 清理毛刺和尖棱 英寸 .003-.015 毫米 0.1-0.4 内圆角 英寸 .020 毫米 0.5 表面粗糙度 英制 125 米制 3.2</div>	绘图: TH 10-27-2010		<div></div>	
19238111						批准: TZ 10-27-2010			名称 <div>MODEL-CFHP-56FR OUTLINE</div>
UL COMPONENT		CSA				第三角投影  图纸格式发布日期 02-22-2008 图纸格式版本 G			
FILE#	CCN#	FILE#	GUIDE#			机密: 本图纸及相关信息所有权归REGAL-BELOIT CORPORATION。未经REGAL-BELOIT CORPORATION书面授权, 不得泄露、复制、传播或作其他用途。一版权所有			
PENDING	PENDING	PENDING	PENDING			图幅 C 图号 SN1202			
CUSTOMER	DISTRIBUTION			ASME Y14.5M 1994	比例 NONE 页号 1				

