

4

3

2

1

REV	ECO	REV BY	DATE	APPD	DATE
B	0025584	J.AGUILERA	04-25-2012	R.RASCON	04-25-2012

D

D

C

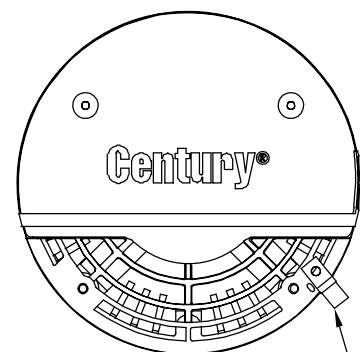
C

B

B

A

A



NON SVRS LABEL
ON BACK SIDE OF MOTOR
ABOVE SERIAL LABEL

TOP OF NAMEPLATE

TOP OF
HORSEPOWER STICKER
ADHESIVE
WHEN REQ'D

SERIAL LABEL
AT 9:00 O'CLOCK

1/2-14 NPT
W/CAP

BONDING LUG

TOP OF NAMEPLATE

7.816
[198.53]

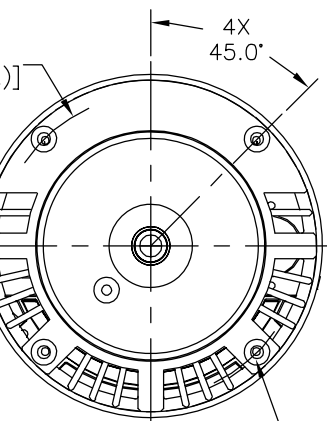
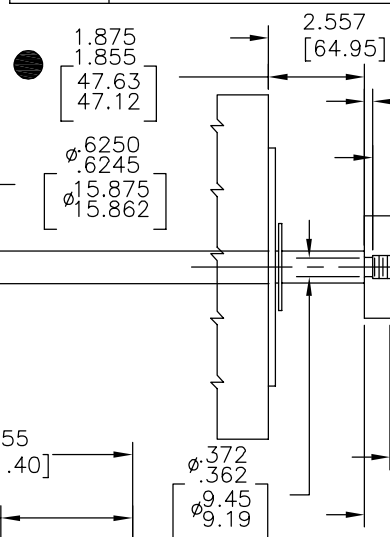
14.600±.055
[370.84±1.40]

2.560±.034
[65.02±.86]
6.872
[174.56]
(3.4)

TOP

TOP

TOP

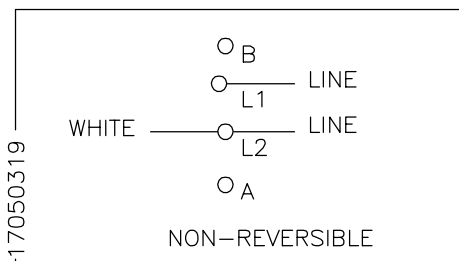


4X
3/8-16UNC-2B
7.75[19.1]

NAMEPLATE DATA

MODEL: 1936890J
CUST PN: USN1252
HP: 2.5 SF: 1.10
ROT: CCWPE
RPM: 3450
TYPE: CX CODE: D
FORM: FRAME: Y 56 J
VOLTS: 208-230
AMPS:
MAX AMPS:
SF AMPS: 13.0-11.8
PH: 1 HZ: 60
INS: B AMB: 50°
DUTY: CONT
ENCLOSURE: ODP
THERMALLY PROTECTED

EXTERNAL CONNECTION DIAGRAM



NOTES

- PILOT DIAMETER IS CONCENTRIC WITH SHAFT CENTERLINE WITHIN .004[.10] T.I.R.
- FACE OF MOUNTING FLANGE IS PERPENDICULAR TO SHAFT CENTERLINE WITHIN .004[.10] T.I.R.
- SHAFT RUNOUT NOT TO EXCEED .002[.05] T.I.R.
- FOR THREADED SHAFT EXT. MATING, PARTS SHOULD BE RELIEVED ONE THREAD TO CLEAR FILLET.
- FOR THREADED SHAFT EXT. ECCENTRICITY OF THREADED PORTION OF SHAFT IS HELD WITHIN .004[.10] TOTAL GAUGE READING WITH THE INDICATOR ON O.D. OF GROUND RING GAGE AS SHOWN. THE GAGE BEING STATIONARY WITH RESPECT TO THE ROTOR.
- END PLAY NOT TO EXCEED .010[.25] MEASURED WITH NO THRUST.
- FRONT END FRAME TO BE ALIGNED WITH BACK END FRAME TO WITHIN ±1° RADIAL ALIGNMENT ±.060[±1.52]
- = CRITICAL DIMENSION

PERFORMANCE CURVE

19238111

APPROVED SAMPLE

GEOMETRIC CHARACTERISTICS & SYMBOLS

□ FLATNESS
— STRAIGHTNESS
∠ ANGULARITY
⊥ PERPENDICULARITY (SQUARENESS)
// PARALLELISM
○ ROUNDNESS (CIRCULARITY)
⊘ CYLINDRICITY
△ PROFILE OF ANY SURFACE
∧ PROFILE OF ANY LINE
↑ RUNOUT
⊕ TRUE POSITION
◎ CONCENTRICITY
≡ SYMMETRY

ASME Y14.5M 1994

UNLESS OTHERWISE SPECIFIED
DIM. TOLERANCES ARE AS FOLLOWS:

INCH X XX XXX XXXX
mm ±.1 ±.02 ±.005 ±.0005
mm ±0.5 ±0.13 ±0.013
ANG. ±.50 DEG
REMOVE BURRS & BREAK SHARP EDGES:
INCH .003-.015 mm 0.1-0.4
CORNER FILLETS TO:
INCH .020 mm 0.5
MACHINE SURFACES:
INCH 125 mm 3.2

METRIC DIMS. SHOWN IN [BRACKETS]

DR BY:

TH

10-27-2010

APPD:

TZ

10-27-2010

THIRD ANGLE PROJECTION



EDS DATE 11-11-2011
FORMAT REV G

CONFIDENTIAL: THIS DRAWING AND ITS INFORMATION ARE THE EXCLUSIVE AND CONFIDENTIAL PROPERTY OF REGAL-BELOIT CORPORATION AND ARE NOT TO BE DISCLOSED, DUPLICATED, DISTRIBUTED OR OTHERWISE USED WITHOUT THE WRITTEN CONSENT OF REGAL-BELOIT CORPORATION. -ALL RIGHTS RESERVED.



REGAL-BELOIT CORPORATION

DESCRIPTION

MODEL-PFHP-56FR
OUTLINE

SIZE

C

DWG NO

USN1252

SCALE

NONE

SHEET

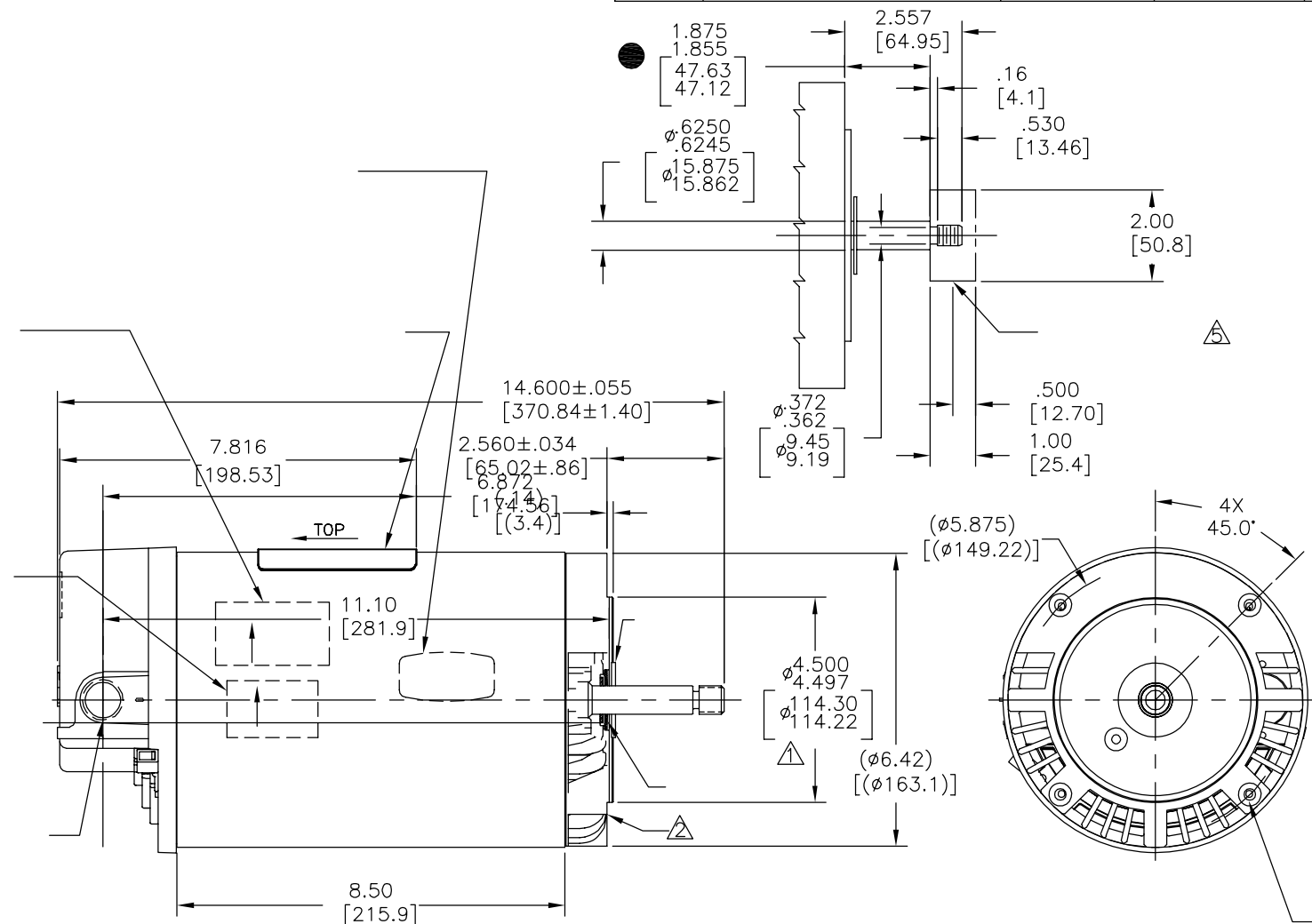
1



4

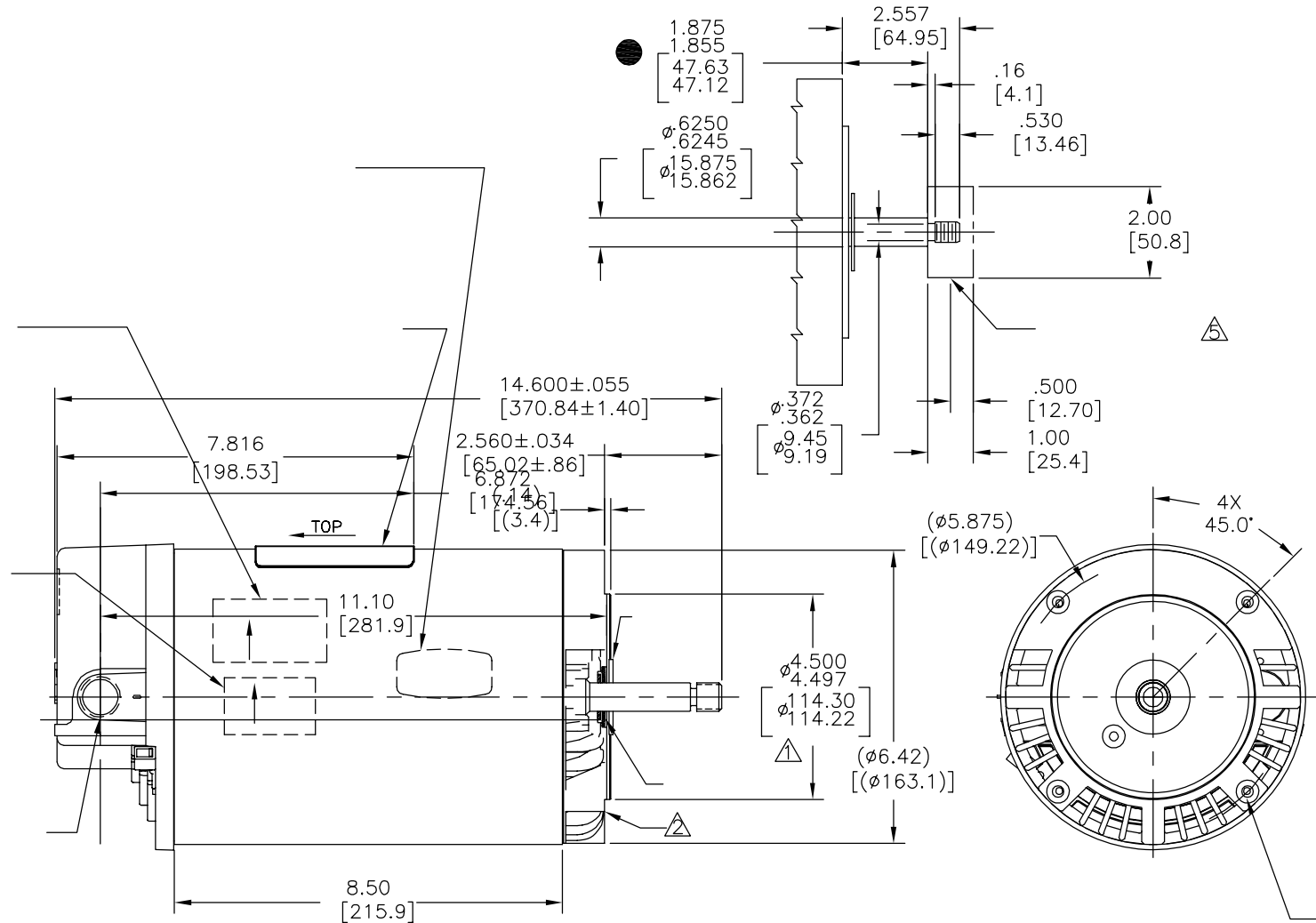
3



2

1



PERFORMANCE CURVE		APPROVED SAMPLE		CARACTERISTICAS DE GEOMETRIA Y SIMBOLOS ∇ PLANICIDAD — RECTITUD ∠ ANGULARIDAD ⊥ PERPENDICULARIDAD (A ESCUADRA) // PARALELISMO ○ REDONDEZ (CIRCULARIDAD) ⌀ CILINDRICIDAD △ PERFIL DE CUALQUIER SUPERFICIE ▽ PERFIL DE CUALQUIER LINEA † VARIACION ⊕ POSICION REAL ◎ CONCENTRICIDAD = SIMETRIA ASME Y14.5M 1994		A MENOS QUE SE ESPECIFIQUE DE OTRA MANERA, LAS TOLERANCIAS DE LAS DIMS. SON LAS SIGUIENTES: X XX XXX XXXX PULG ±.1 ±.02 ±.005 ±.0005 mm ±0.5 ±0.13 ±0.013 ANG. ±.50 GRADOS ELIMINAR REBABAS Y ORILLAS FILOSAS DEL BORDE. PULG .003-.015 mm 0.1-0.4 FILETEAR ESQUINA: PULG .020 mm 0.5 MAQUINAR SUPERFICIES PULG 125 mm 3.2		DIBUJADO POR: TH		10-27-2010			
19238111						APROBADO POR: TZ		10-27-2010					
UL COMPONENT		CSA				TERCER ANGULO DE PROYECCION				FECHA EDS: 11-11-2011 REV. FORMATO: G		DESCRIPCION: MODEL-PFHP-56FR OUTLINE	
FILE#	CCN#	FILE#	GUIDE#			CONFIDENCIAL: ESTE DIBUJO Y SU INFORMACION SON PROPIEDAD DE USO EXCLUSIVO Y CONFIDENCIAL DE REGAL-BELOIT CORPORATION. Y NO DEBERAN SER REVELADOS, Duplicados, DISTRIBUIDOS O USARSE DE OTRA MANERA SIN EL CONSENTIMIENTO ESCRITO DE REGAL-BELOIT CORPORATION. -TODOS LOS DERECHOS RESERVADOS.							
PENDING	PENDING	PENDING	PENDING	ASME Y14.5M 1994 DIMS METRICAS MOSTRADAS [PARENTESIS]						TAMAÑO: C		NUMERO DE DIBUJO: USN1252	
CUSTOMER		DISTRIBUTION								ESCALA: NONE		HOJA: 1	



PERFORMANCE CURVE		APPROVED SAMPLE		<div>形位公差 □ 平面度 — 直线度 ∠ 倾斜度 ⊥ 垂直度 // 平行度 ○ 圆度 ⊙ 圆柱度 △ 面轮廓度 ⊖ 线轮廓度 ! 圆跳动 ⊕ 位置度 ◎ 同轴度 ≡ 对称度</div>	<div>除另有注明 尺寸公差如下: 英寸 X ±.1 XX ±.02 XXX ±.005 XXXX ±.0005 毫米 ±0.5 ±0.13 ±0.013 角度 ±.50 清理毛刺和尖棱 英寸 .003-.015 毫米 0.1-0.4 内圆角 英寸 .020 毫米 0.5 表面粗糙度 英制 125 米制 3.2</div>	绘图: TH 10-27-2010		<div> REGAL-BELOIT CORPORATION</div> <div>名称</div> <div>MODEL-PFHP-56FR OUTLINE</div> <div>图幅 C 图号 USN1252</div> <div>比例 NONE 页号 1</div>
19238111						批准: TZ 10-27-2010		
UL COMPONENT		CSA				第三角投影  图纸格式发布日期 11-11-2011 图纸格式版本 G		
FILE#	CCN#	FILE#	GUIDE#			机密: 本图纸及相关信息所有权归REGAL-BELOIT CORPORATION。未经REGAL-BELOIT CORPORATION书面授权, 不得泄露、复制、传播或作其他用途。一版权所有		
PENDING	PENDING	PENDING	PENDING					
CUSTOMER		DISTRIBUTION		ASME Y14.5M 1994 米制尺寸显示在 []				

