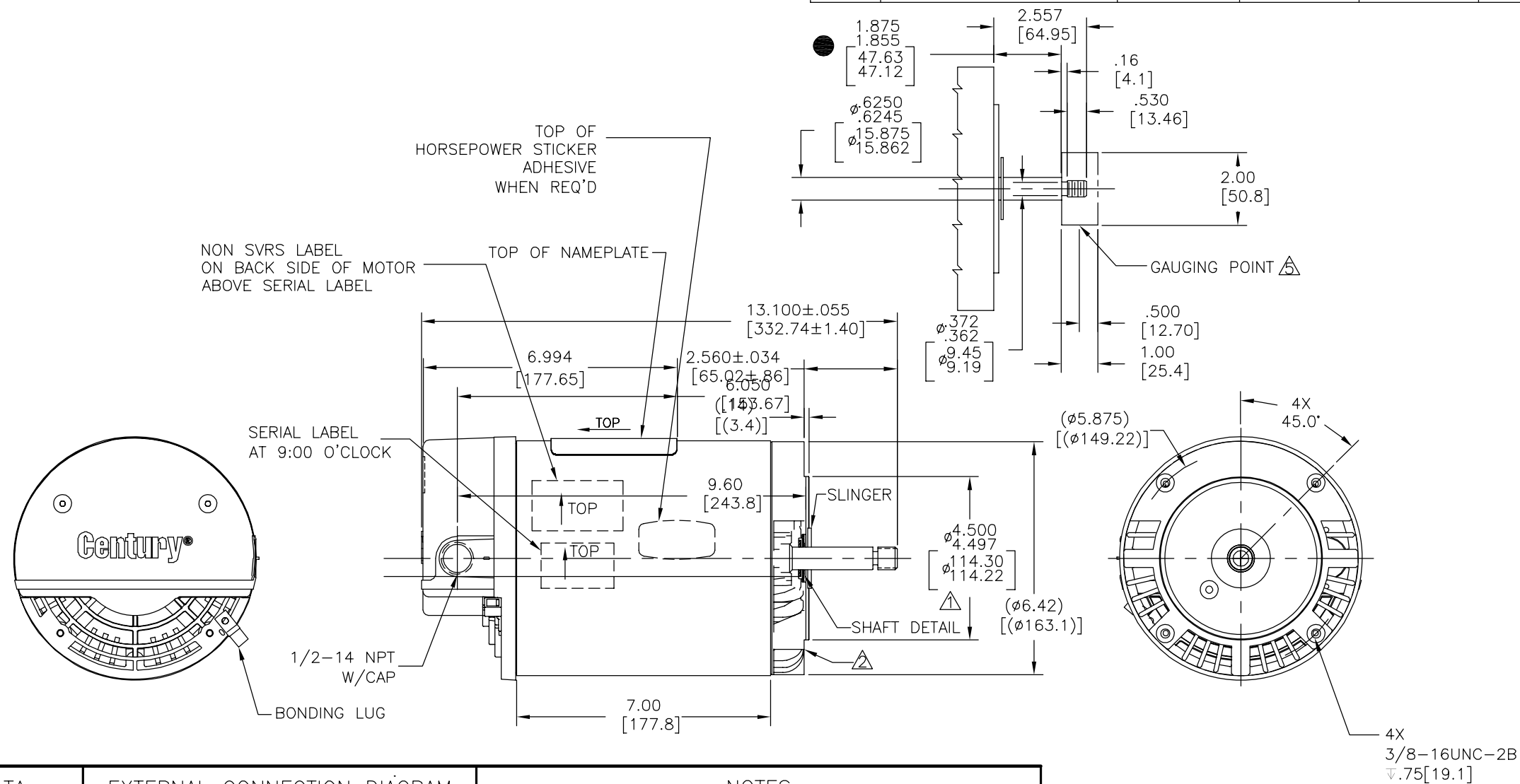
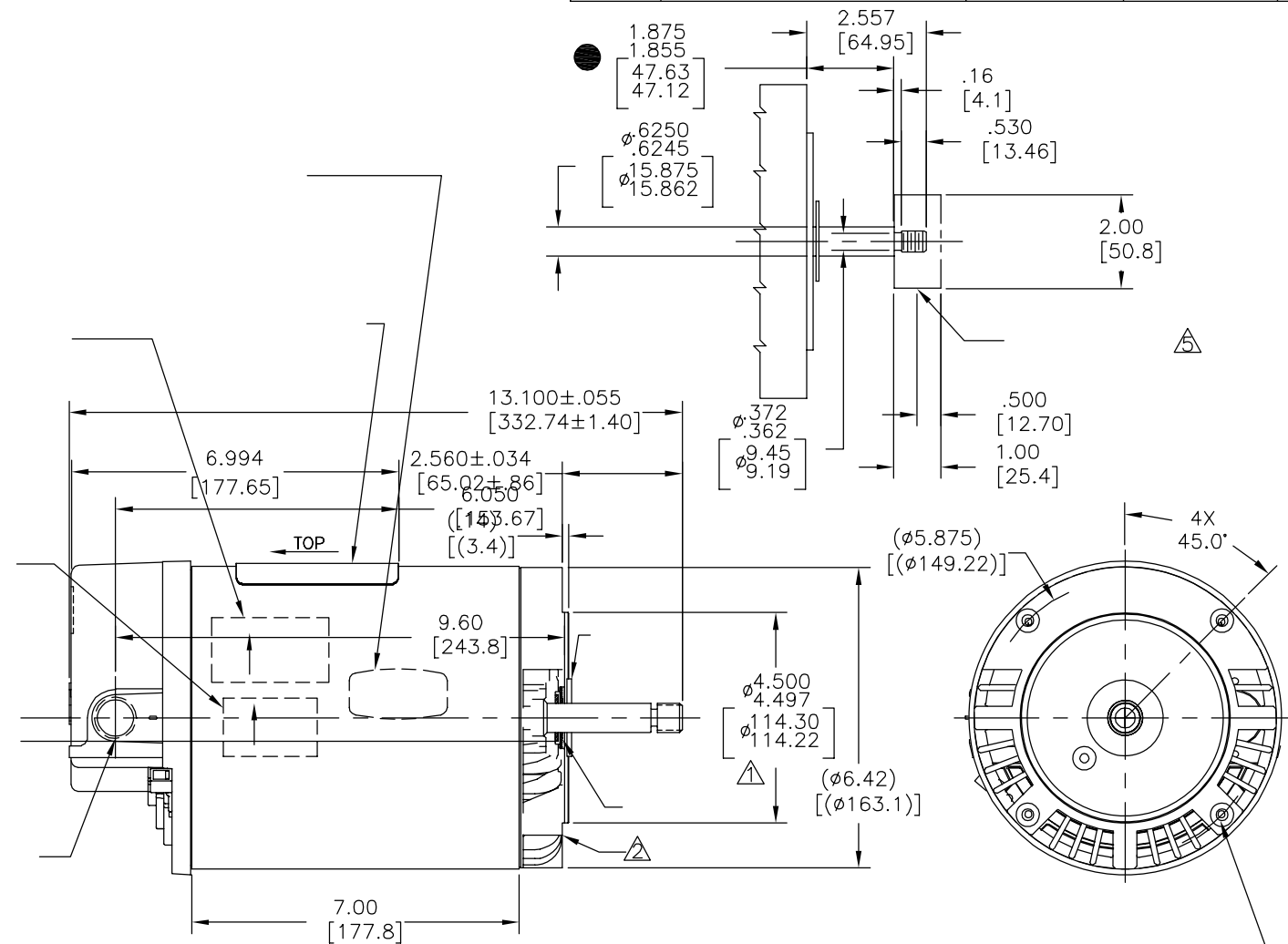




REV	ECO	REV BY	DATE	APPD	DATE
C	0025579	E.SINECIO	04-25-2012	R.RASCON	04-25-2012



NAMEPLATE DATA	EXTERNAL CONNECTION DIAGRAM	NOTES
MODEL: 1936820J CUST PN: SN1072 HP: 3/4 SF: 1.85 ROT: CCWPE RPM: 3450 TYPE: C CODE: L FORM: FRAME: U 56 J VOLTS: 208-230/115 AMPS: 6.0-5.5/11.0 MAX AMPS: SF AMPS: - PH: 1 HZ: 60 INS: B AMB: 50° DUTY: CONT ENCLOSURE: ODP THERMALLY PROTECTED	<p>LOW VOLTAGE BROWN — B WHITE — L1 WHITE — L2 WHITE — A</p> <p>HIGH VOLTAGE WHITE — B WHITE — L1 WHITE — L2 BROWN — A</p> <p>NON-REVERSIBLE</p>	<ul style="list-style-type: none">PILOT DIAMETER IS CONCENTRIC WITH SHAFT CENTERLINE WITHIN .004[.10] T.I.R.FACE OF MOUNTING FLANGE IS PERPENDICULAR TO SHAFT CENTERLINE WITHIN .004[.10] T.I.R.SHAFT RUNOUT NOT TO EXCEED .002[.05] T.I.R.FOR THREADED SHAFT EXT. MATING, PARTS SHOULD BE RELIEVED ONE THREAD TO CLEAR FILLET.FOR THREADED SHAFT EXT. ECCENTRICITY OF THREADED PORTION OF SHAFT IS HELD WITHIN .004[.10] TOTAL GAUGE READING WITH THE INDICATOR ON O.D. OF GROUND RING GAGE AS SHOWN. THE GAGE BEING STATIONARY WITH RESPECT TO THE ROTOR.END PLAY NOT TO EXCEED .010[.25] MEASURED WITH NO THRUST.FRONT END FRAME TO BE ALIGNED WITH BACK END FRAME TO WITHIN ±1° RADIAL ALIGNMENT ±.060[±1.52]● = CRITICAL DIMENSION

PERFORMANCE CURVE	APPROVED SAMPLE	GEOMETRIC CHARACTERISTICS & SYMBOLS	UNLESS OTHERWISE SPECIFIED DIM. TOLERANCES ARE AS FOLLOWS:	DR BY:	TH	10-27-2010	 REGAL-BELOIT CORPORATION
19222611		□ FLATNESS — STRAIGHTNESS ∠ ANGULARITY ⊥ PERPENDICULARITY (SQUARENESS) // PARALLELISM ○ ROUNDNESS (CIRCULARITY) ⊘ CYLINDRICITY △ PROFILE OF ANY SURFACE ⌒ PROFILE OF ANY LINE ↑ RUNOUT ⊕ TRUE POSITION ◎ CONCENTRICITY ≡ SYMMETRY	INCH X XX XXX XXXX ±.1 ±.02 ±.005 ±.0005 mm ±0.5 ±0.13 ±0.013 ANG. ±50 DEG REMOVE BURRS & BREAK SHARP EDGES: INCH .003-.015 mm 0.1-0.4 CORNER FILLETS TO: INCH .020 mm 0.5 MACHINE SURFACES: INCH 125 mm 3.2	APPD:	TZ	10-27-2010	
UL COMPONENT	CSA	ASME Y14.5M 1994	METRIC DIMS. SHOWN IN [BRACKETS]	THIRD ANGLE PROJECTION		EDS DATE 02-22-2008 FORMAT REV G	
FILE#	CCN#	FILE#	GUIDE#	CONFIDENTIAL: THIS DRAWING AND ITS INFORMATION ARE THE EXCLUSIVE AND CONFIDENTIAL PROPERTY OF REGAL-BELOIT CORPORATION AND ARE NOT TO BE DISCLOSED, DUPLICATED, DISTRIBUTED OR OTHERWISE USED WITHOUT THE WRITTEN CONSENT OF REGAL-BELOIT CORPORATION. -ALL RIGHTS RESERVED.			
PENDING	PENDING	PENDING	PENDING	SIZE C			DWG NO SN1072
CUSTOMER	DISTRIBUTION		SCALE NONE				SHEET 1



PERFORMANCE CURVE		APPROVED SAMPLE		CARACTERISTICAS DE GEOMETRIA Y SIMBOLOS / PLANICIDAD — RECTITUD < ANGULARIDAD ⊥ PERPENDICULARIDAD (A ESCUADRA) // PARALELISMO ○ REDONDEZ (CIRCULARIDAD) ∅ CILINDRICIDAD △ PERFIL DE CUALQUIER SUPERFICIE ▽ PERFIL DE CUALQUIER LINEA † VARIACION ± POSICION REAL ◎ CONCENTRICIDAD = SIMETRIA		A MENOS QUE SE ESPECIFIQUE DE OTRA MANERA, LAS TOLERANCIAS DE LAS DIMS. SON LAS SIGUIENTES: $\frac{X}{Y}$ PULG $\pm .1 \pm .02 \pm .005 \pm .0005$ mm $\pm .5 \pm .13 \pm .013$ ANG. $\pm .50$ GRADOS ELIMINAR REBABAS Y ORILLAS FILOSAS DEL BORDE. PULG .003—.015 mm 0.1—0.4 FILETEAR ESQUINA: PULG .020 mm 0.5 MAQUINAR SUPERFICIES PULG 125 mm 32		DIBUJADO POR: TH 10-27-2010 APROBADO POR: TZ 10-27-2010 TERCER ANGULO DE PROYECCION  FECHA EDS: 02-22-2008 REV. FORMATO: G CONFIDENCIAL: ESTE DIBUJO Y SU INFORMACION SON PROPIEDAD DE USO EXCLUSIVO Y CONFIDENCIAL DE REGAL-BELOIT CORPORATION. Y NO DEBERAN SER REVELADOS, DUPLICADOS, DISTRIBUIDOS O USARSE DE OTRA MANERA SIN EL CONSENTIMIENTO ESCRITO DE REGAL-BELOIT CORPORATION. -TODOS LOS DERECHOS RESERVADOS.		<div style="text-align: center;">  REGAL-BELOIT CORPORATION </div> DESCRIPCION: <h2 style="text-align: center;">MODEL-CFHP-56FR OUTLINE</h2> TAMAÑO: C NUMERO DE DIBUJO: SN1072 ESCALA: NONE HOJA: 1	
19222611											
UL COMPONENT		CSA									
FILE#	CCN#	FILE#	GUIDE#								
PENDING	PENDING	PENDING	PENDING								
CUSTOMER	DISTRIBUTION			ASME Y14.5M 1994		DIMES METRICAS MOSTRADAS [PARENTESIS]					



08	DESCRIPCION:	MODEL-CFHP-56FR
		OUTLINE

TAMAÑO: C	NUMERO DE DIBUJO: SN1072
-----------	--------------------------

ESCALA: NONE	HOJA: 1
--------------	---------

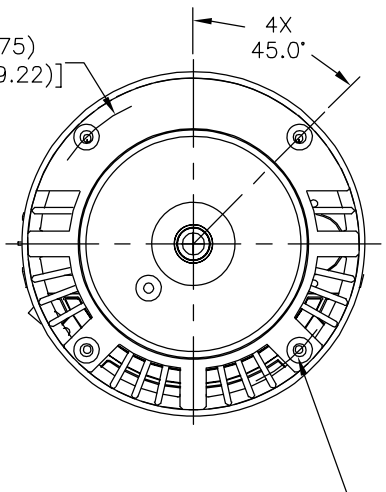
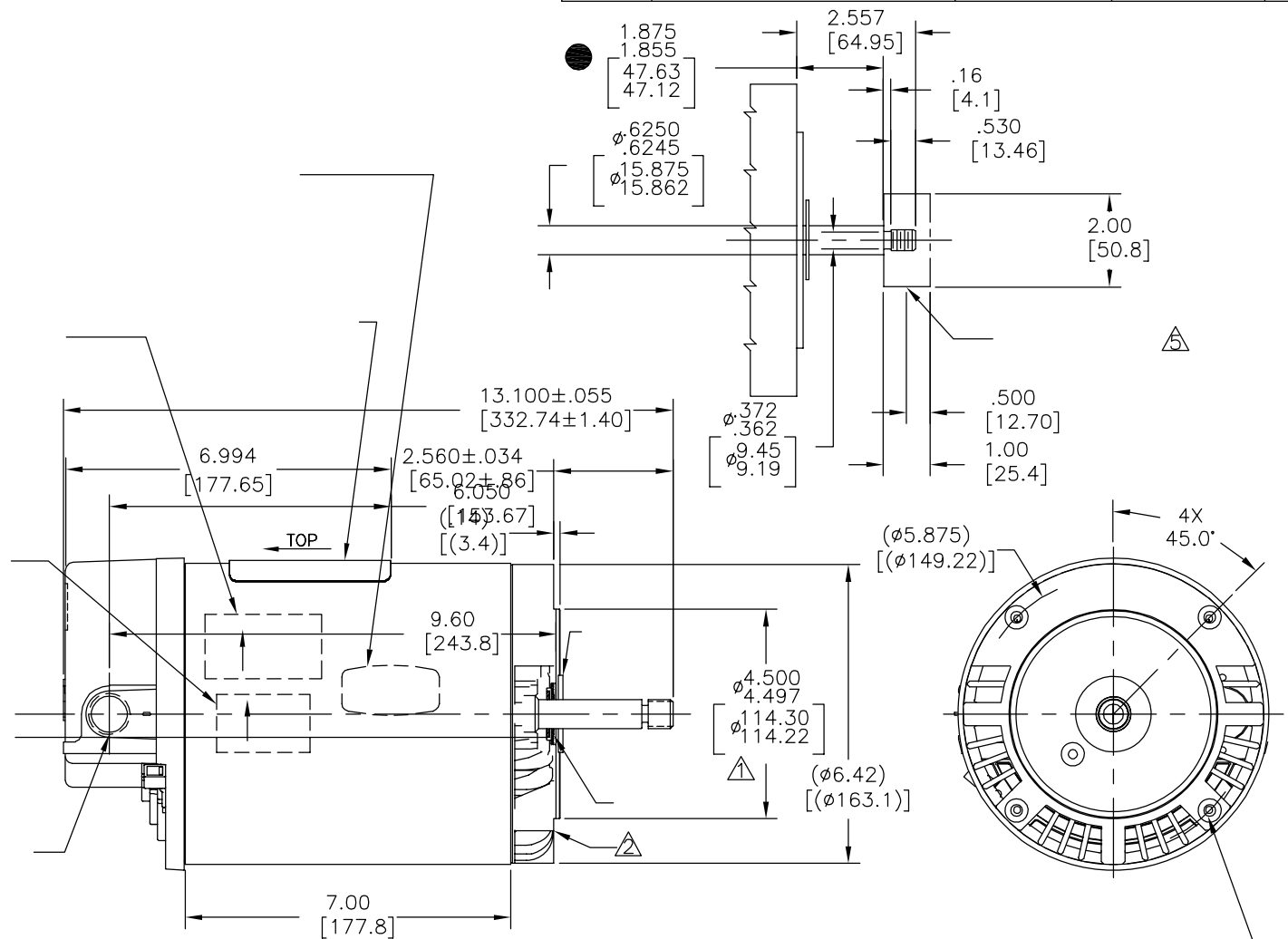
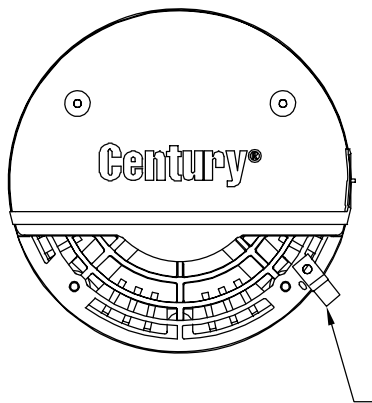
4

3

2

1

版本	ECO	编制	日期	批准	日期
C	0025579	E.SINECIO	04-25-2012	R.RASCON	04-25-2012



D

D

C

C

B

B

NAMEPLATE DATA	EXTERNAL CONNECTION DIAGRAM	NOTES
MODEL: 1936820J CUST PN: SN1072 HP: 3/4 SF: 1.85 ROT: CCWPE RPM: 3450 TYPE: C CODE: L FORM: FRAME: U 56 J VOLTS: 208-230/115 AMPS: 6.0-5.5/11.0 MAX AMPS: SF AMPS: - PH: 1 HZ: 60 INS: B AMB: 50° DUTY: CONT ENCLOSURE: ODP THERMALLY PROTECTED		

A

A

PERFORMANCE CURVE	APPROVED SAMPLE	形位公差 □ 平面度 — 直线度 ∠ 倾斜度 ⊥ 垂直度 ∥ 平行度 ○ 圆度 ⊙ 圆柱度 △ 面轮廓度 ⌒ 线轮廓度 ↗ 圆跳动 ⊕ 位置度 ⊗ 同轴度 ≡ 对称度	除另有注明 尺寸公差如下: 英寸 X XX XXX XXXX 毫米 ±.1 ±.02 ±.005 ±.0005 ±0.5 ±0.13 ±0.013 角度 ±.50 度 清理毛刺和尖棱 英寸 .003-.015 毫米 0.1-0.4 内圆角 英寸 .020 毫米 0.5 表面粗糙度 英制 125 米制 3.2	绘图: TH 10-27-2010 批准: TZ 10-27-2010 第三角投影 图纸格式发布日期 02-22-2008 图纸格式版本 G 机密: 本图纸及相关信息所有权归REGAL-BELOIT CORPORATION。 未经REGAL-BELOIT CORPORATION书面授权, 不得泄露、 复制、传播或作其他用途。一版权所有	名称 MODEL-CFHP-56FR OUTLINE 图幅 C 图号 SN1072 比例 NONE 页号 1
UL COMPONENT	CSA	ASME Y14.5M 1994	米制尺寸显示在 []		
FILE#	CCN#	FILE#	GUIDE#		
PENDING	PENDING	PENDING	PENDING		
CUSTOMER	DISTRIBUTION				

4

3

2

1