

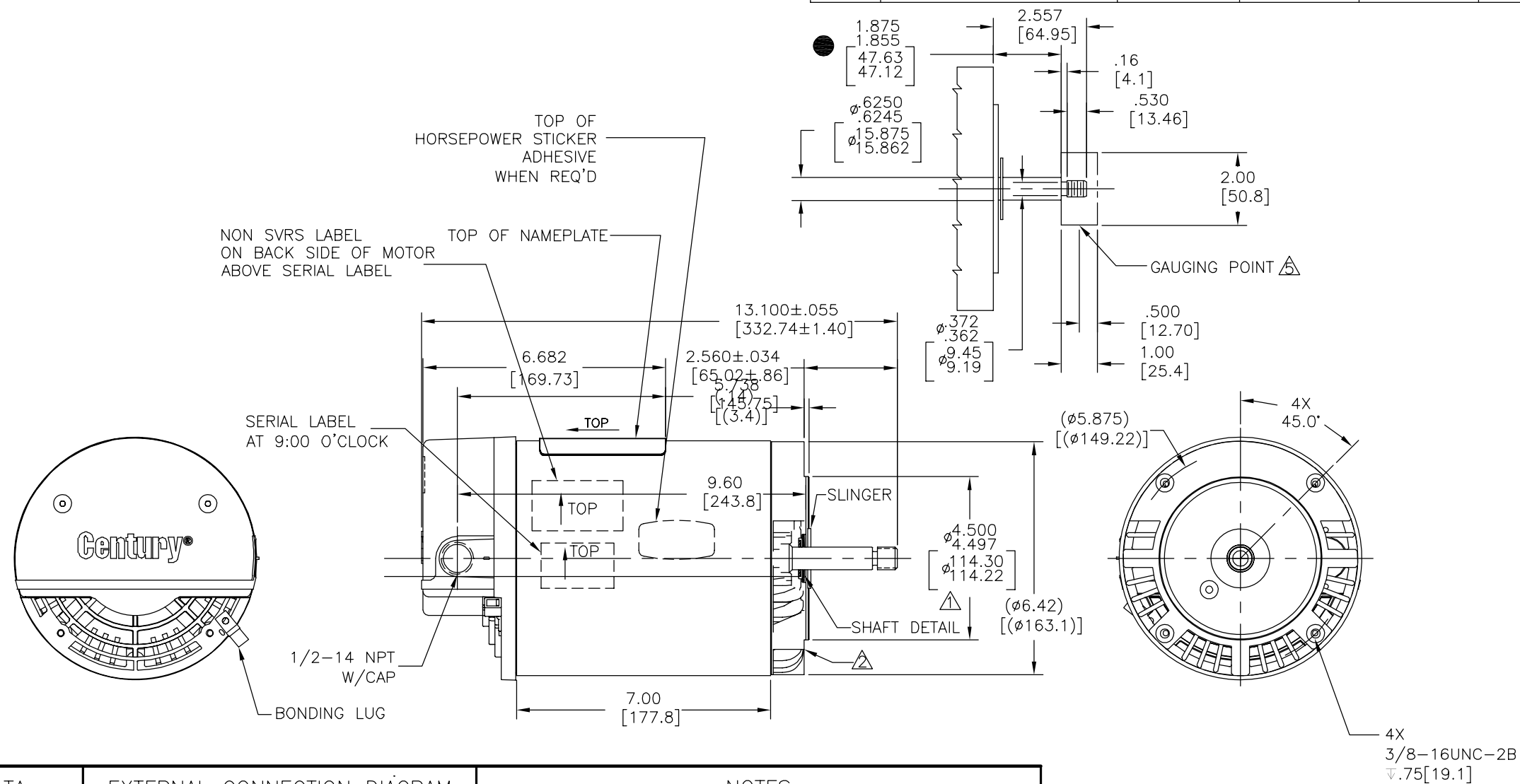
4

3

2

1

REV	ECO	REV BY	DATE	APPD	DATE
B	0025584	J.AGUILERA	04-25-2012	R.RASCON	04-25-2012

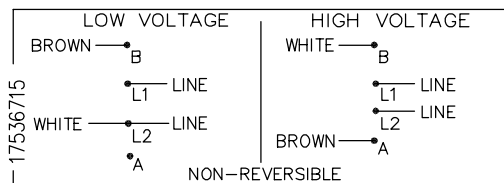


## NAMEPLATE DATA

## EXTERNAL CONNECTION DIAGRAM

## NOTES

MODEL: 1936830J  
CUST PN: USN1102  
HP: 1.0 SF: 1.4  
ROT: CCWPE  
RPM: 3450  
TYPE: CX CODE: J  
FORM: FRAME: U 56 J  
VOLTS: 208-230/115  
AMPS:  
MAX AMPS:  
SF AMPS: 6.0-5.5/11.0  
PH: 1 HZ: 60  
INS: B AMB: 50°  
DUTY: CONT  
ENCLOSURE: ODP  
THERMALLY PROTECTED



- PILOT DIAMETER IS CONCENTRIC WITH SHAFT CENTERLINE WITHIN .004[.10] T.I.R.
- FACE OF MOUNTING FLANGE IS PERPENDICULAR TO SHAFT CENTERLINE WITHIN .004[.10] T.I.R.
- SHAFT RUNOUT NOT TO EXCEED .002[.05] T.I.R.
- FOR THREADED SHAFT EXT. MATING, PARTS SHOULD BE RELIEVED ONE THREAD TO CLEAR FILLET.
- FOR THREADED SHAFT EXT. ECCENTRICITY OF THREADED PORTION OF SHAFT IS HELD WITHIN .004[.10] TOTAL GAUGE READING WITH THE INDICATOR ON O.D. OF GROUND RING GAGE AS SHOWN. THE GAGE BEING STATIONARY WITH RESPECT TO THE ROTOR.
- END PLAY NOT TO EXCEED .010[.25] MEASURED WITH NO THRUST.
- FRONT END FRAME TO BE ALIGNED WITH BACK END FRAME TO WITHIN ±1° RADIAL ALIGNMENT ±.060[±1.52]
- = CRITICAL DIMENSION

## PERFORMANCE CURVE

## APPROVED SAMPLE

## GEOMETRIC CHARACTERISTICS &amp; SYMBOLS

## UNLESS OTHERWISE SPECIFIED

DIM. TOLERANCES ARE AS FOLLOWS:

INCH .1 .02 .005 .0005

mm ±0.5 ±0.13 ±0.013

ANG. ±.50 DEG

REMOVE BURRS &amp; BREAK SHARP EDGES:

INCH .003-.015 mm 0.1-0.4

CORNER FILLETS TO:

INCH .020 mm 0.5

MACHINE SURFACES:

INCH 125 mm 3.2

METRIC DIMS. SHOWN IN [BRACKETS]

## DR BY:

TH

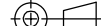
10-27-2010

## APPD:

TZ

10-27-2010

## THIRD ANGLE PROJECTION



EDS DATE 11-11-2011

FORMAT REV G

CONFIDENTIAL: THIS DRAWING AND ITS INFORMATION ARE THE EXCLUSIVE AND CONFIDENTIAL PROPERTY OF REGAL-BELOIT CORPORATION AND ARE NOT TO BE DISCLOSED, DUPLICATED, DISTRIBUTED OR OTHERWISE USED WITHOUT THE WRITTEN CONSENT OF REGAL-BELOIT CORPORATION. -ALL RIGHTS RESERVED.



REGAL-BELOIT CORPORATION

## DESCRIPTION

MODEL-PFHP-56FR  
OUTLINE

## SIZE

C

## DWG NO

USN1102

## SCALE

NONE

## SHEET

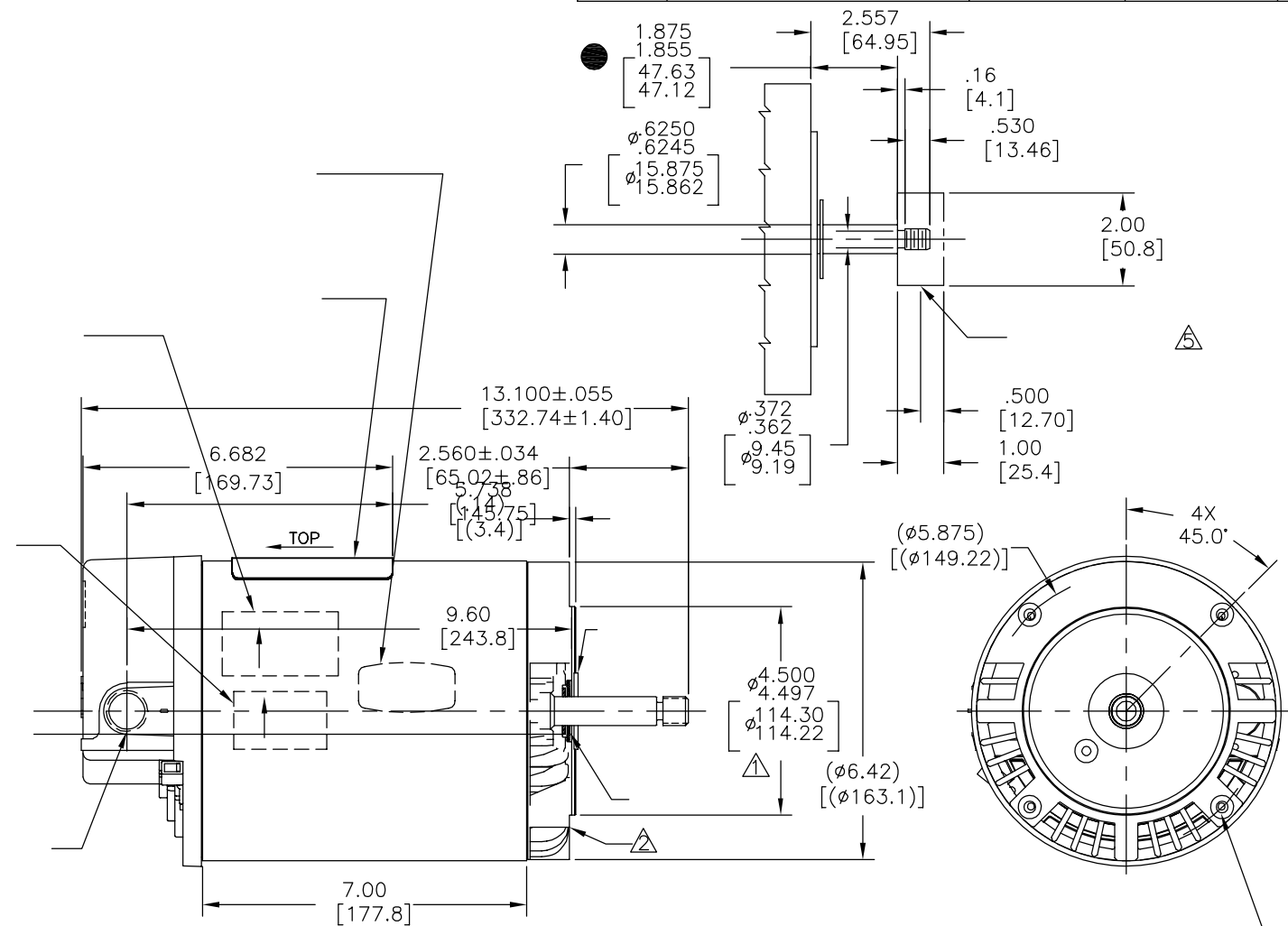
1



4

3

2

1



PERFORMANCE CURVE		APPROVED SAMPLE		CARACTERISTICAS DE GEOMETRIA Y SIMBOLOS ∇ PLANICIDAD — RECTITUD ∠ ANGULARIDAD ⊥ PERPENDICULARIDAD (A ESCUADRA) // PARALELISMO ○ REDONDEZ (CIRCULARIDAD) ⌀ CILINDRICIDAD △ PERFIL DE CUALQUIER SUPERFICIE ▽ PERFIL DE CUALQUIER LINEA † VARIACION ⊕ POSICION REAL ⊙ CONCENTRICIDAD = SIMETRIA  ASME Y14.5M 1994		A MENOS QUE SE ESPECIFIQUE DE OTRA MANERA, LAS TOLERANCIAS DE LAS DIMS. SON LAS SIGUIENTES: PULG ±.1 ±.02 ±.005 ±.0005 mm ±0.5 ±0.13 ±0.013 ANG. ±.50 GRADOS ELIMINAR REBABAS Y ORILLAS FILOSAS DEL BORDE. PULG .003-.015 mm 0.1-0.4 FILETEAR ESQUINA: PULG .020 mm 0.5 MAQUINAR SUPERFICIES PULG 125 mm:3.2  DIMS METRICAS MOSTRADAS [PARENTESIS]		DIBUJADO POR: TH		10-27-2010			
19222611								APROBADO POR: TZ		10-27-2010			
UL COMPONENT		CSA						TERCER ANGULO DE PROYECCION		 FECHA EDS: 11-11-2011 REV. FORMATO: G			
FILE#	CCN#	FILE#	GUIDE#					CONFIDENCIAL: ESTE DIBUJO Y SU INFORMACION SON PROPIEDAD DE USO EXCLUSIVO Y CONFIDENCIAL DE REGAL-BELOIT CORPORATION. Y NO DEBERAN SER REVELADOS, Duplicados, DISTRIBUIDOS O USARSE DE OTRA MANERA SIN EL CONSENTIMIENTO ESCRITO DE REGAL-BELOIT CORPORATION. -TODOS LOS DERECHOS RESERVADOS.				DESCRIPCION:  MODEL-PFHP-56FR OUTLINE	
PENDING	PENDING	PENDING	PENDING					TAMAÑO: C		NUMERO DE DIBUJO: USN1102			
CUSTOMER		DISTRIBUTION						ESCALA: NONE				HOJA: 1	

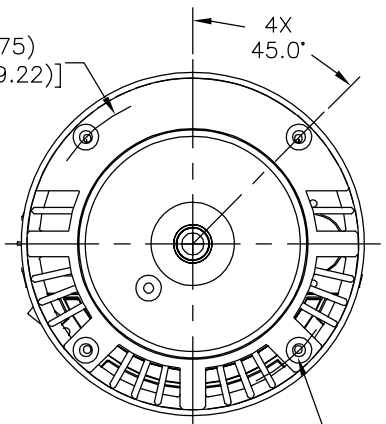
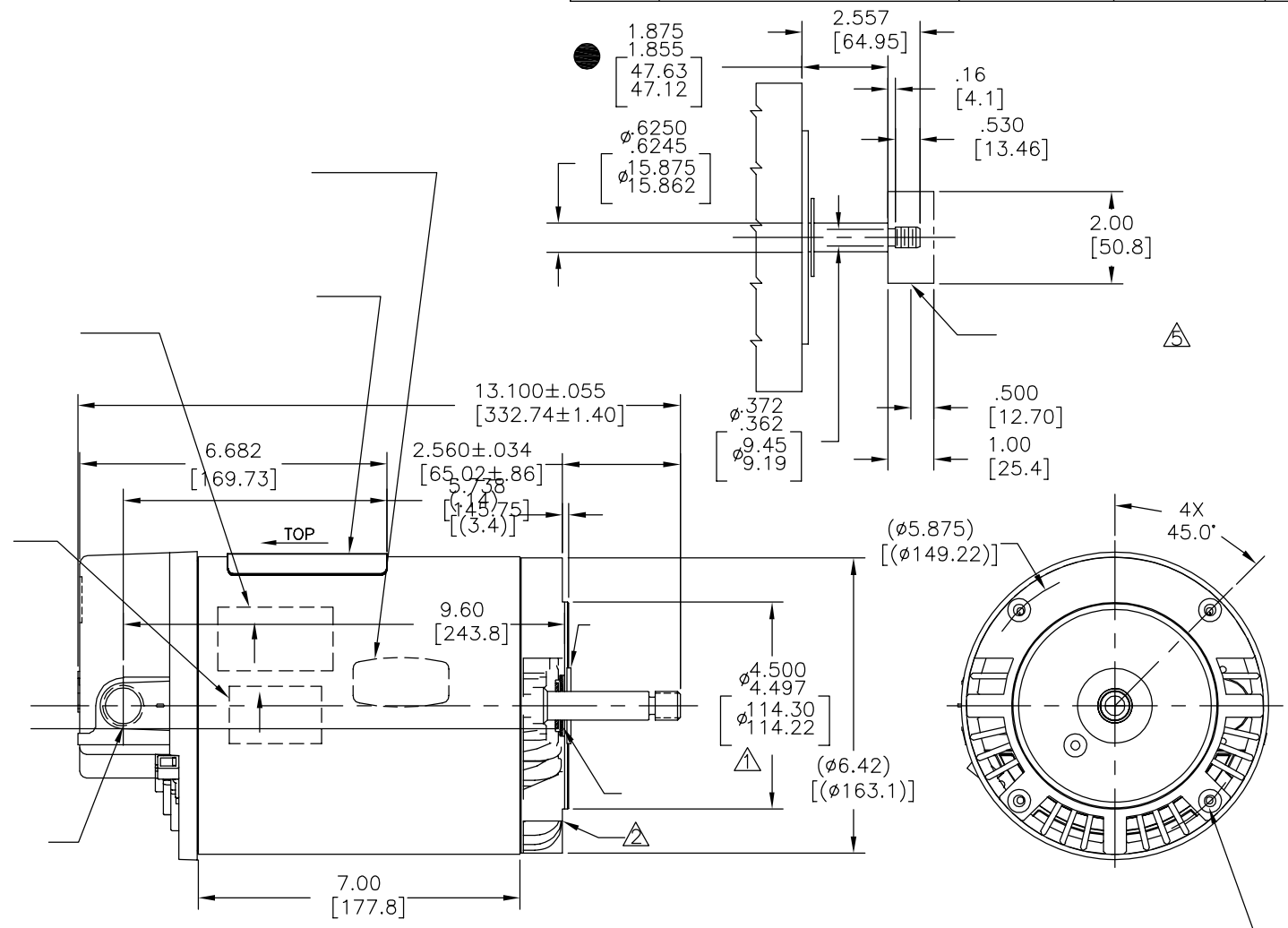
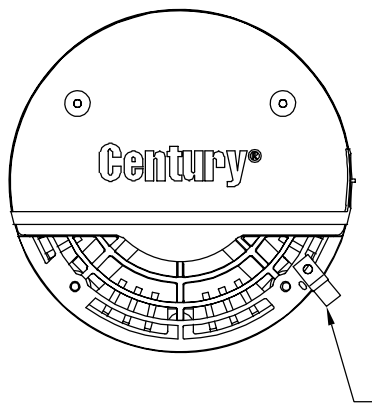
4

3

2

1

版本	ECO	编制	日期	批准	日期
B	0025584	J.AGUILERA	04-25-2012	R.RASCON	04-25-2012



D

D

C

C

B

B

NAMEPLATE DATA	EXTERNAL CONNECTION DIAGRAM	NOTES
MODEL: 1936830J CUST PN: USN1102 HP: 1.0 SF: 1.4 ROT: CCWPE RPM: 3450 TYPE: CX CODE: J FORM: FRAME: U 56 J VOLTS: 208-230/115 AMPS: MAX AMPS: SF AMPS: 6.0-5.5/11.0 PH: 1 HZ: 60 INS: B AMB: 50° DUTY: CONT ENCLOSURE: ODP THERMALLY PROTECTED	<div>LOW VOLTAGE</div> <div>BROWN — B</div> <div>L1 — LINE</div> <div>WHITE — L2</div> <div>A</div> <div>HIGH VOLTAGE</div> <div>WHITE — B</div> <div>L1 — LINE</div> <div>L2 — LINE</div> <div>BROWN — A</div> <div>NON-REVERSIBLE</div>	<div>● ▲</div> <div>● ▲</div> <div>● ▲</div> <div>●</div>

A

A

PERFORMANCE CURVE	APPROVED SAMPLE	形位公差 □ 平面度 — 直线度 ∠ 倾斜度 ⊥ 垂直度 ∥ 平行度 ○ 圆度 ⊙ 圆柱度 △ 面轮廓度 ∩ 线轮廓度 ↗ 圆跳动 ⊕ 位置度 ◎ 同轴度 ≡ 对称度	除另有注明 尺寸公差如下: 英寸 X XX XXX XXXX 毫米 ±.1 ±.02 ±.005 ±.0005 ±0.5 ±0.13 ±0.013 角度 ±.50 度 清理毛刺和尖棱 英寸 .003-.015 毫米 0.1-0.4 内圆角 英寸 .020 毫米 0.5 表面粗糙度 英制 125 米制 3.2	绘图: TH 10-27-2010 批准: TZ 10-27-2010 第三角投影 图纸格式发布日期 11-11-2011 图纸格式版本 G 机密: 本图纸及相关信息所有权归REGAL-BELOIT CORPORATION。 未经REGAL-BELOIT CORPORATION书面授权, 不得泄露、 复制、传播或作其他用途。—版权所有	名称 MODEL-PFHP-56FR OUTLINE 图幅 C 图号 USN1102 比例 NONE 页号 1
19222611			ASME Y14.5M 1994		
UL COMPONENT	CSA				
FILE#	CCN#	FILE#	GUIDE#		
PENDING	PENDING	PENDING	PENDING		
CUSTOMER	DISTRIBUTION				

4

3

2

1