

PRODUCT INFORMATION PACKET

Model No: HBC080

Catalog No: HBC080

0.8 HP Pool Pump Motor, 1 phase, 3600 RPM, 230/115 V, 56J Frame, ODP



Regal and are trademarks of Regal Rexnord Corporation or one of its affiliated companies.

©2022 Regal Rexnord Corporation, All Rights Reserved. MC017097E

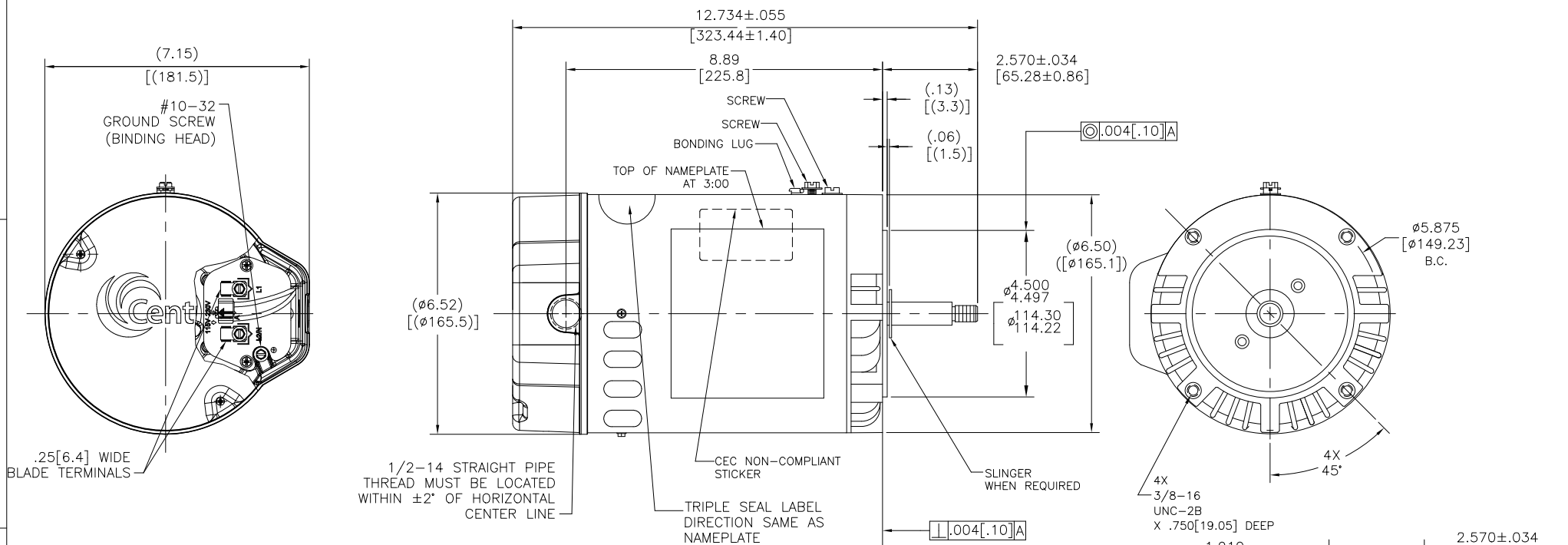
Nameplate Specifications

Output HP	0.8 Hp	Output KW	0.60 kW
Frequency	60 Hz	Voltage	230/115 V
Current	SF 4.4/8.8 A	Speed	3450 rpm
Service Factor	1	Phase	1
Duty	Continuous	Insulation Class	F
Frame	56J	Enclosure	Drip Proof
Thermal Protection	Thermally Protected	Ambient Temperature	50 °C
UL	Recognized	CSA	Y
Number of Speeds	1		

Technical Specifications

Electrical Type	Permanent Split Capacitor, Single Or Dual Voltage	Poles	2
Rotation	Counterclockwise Pump End	Mounting	Round
Motor Orientation	Horizontal	Drive End Bearing	Ball
Opp Drive End Bearing	Ball	Frame Material	Rolled Steel
Shaft Type	7/16 Thread	Overall Length	12.73 in
Frame Length	6.76 in	Shaft Diameter	0.625 in
Shaft Extension	2.57 in		
Outline Drawing	HBC080-S01	Connection Drawing	17887301

This is an uncontrolled document once printed or downloaded and is subject to change without notice. Date Created:05/14/2022



NAMEPLATE DATA	EXTERNAL CONNECTION DIAGRAM	NOTES
MODEL: F56AB75A01 CUST PN: HBC080 HP: 0.8 SF: 1.0 ROT: CCWPE RPM: 3450 TYPE: CX FORM: - VOLTS: 230/115 AMPS: 4.4/8.8 MAX AMPS: - PH: 3 HZ: 60 INS: F AMB: 50°C DUTY: CONT ENCLOSURE: DP THERMALLY-PROTECTED	<p>115V 230V 7-02</p> <p>GRD GREEN (GROUND)</p> <p>HIGH VOLTAGE SHOWN. TO CHANGE TO LOW VOLTAGE, PULL UP BLACK PLUG AND MOVE TO 115V POSITION. PUSH ARROW ON PLUG TO ARROW ON TERMINAL BOARD AND PUSH DOWN ON TWO PINS. CONNECT POWER LEADS TO L1 AND L2. FOR 115V POWER, NEUTRAL CONNECTS TO L2.</p> <p>USE COPPER CONDUCTORS ONLY. INSTALL MOTOR WITH VENTS DOWN. ACCEPTABLE FOR FIELD WIRING</p> <p>D0000312-007</p>	<ol style="list-style-type: none">PILOT DIAMETER IS CONCENTRIC WITH SHAFT CENTERLINE WITHIN .004[0.10] T.I.R.FACE OF MOUNTING FLANGE IS PERPENDICULAR TO SHAFT CENTERLINE WITHIN .004[0.102] T.I.R.SHAFT RUNOUT NOT TO EXCEED .002[0.051]END PLAY NOT TO EXCEED .010[0.254] MEASURED WITH NO THRUSTFINISH PAINT TO BE SATIN BLACK..44[11.2] WRENCH FLATS ON SHAFT-FOR ACCESS TO THIS WRENCH FLAT REMOVE END COVER. STAINLESS STEEL SHAFT EXT.LIMITS ON AMPLITUDE OF VIBRATION MEASURED AT BEARING HOUSING = .001.CONNECTED FOR 230 VOLTS. DUAL VOLTAGE MOTOR. SEE CONNECTION DIAGRAM TO CHANGE VOLTS TO 115V.CTQ REQUIREMENT SEE EP000105-008RgHS & REACH REQUIREMENT SEE EP000014.

PERFORMANCE CURVE		APPROVED SAMPLE	
16345012		—	
UL COMPONENT		CSA	
FILE#	CCN#	FILE#	GUIDE#
E25022	XEWR2/8	PENDING	PENDING
CUSTOMER	DISTRIBUTION		

CRITICAL TO QUALITY CHARACTERISTICS(CTQs)	DRAWING REVISION V ECO ECO-0217731 ECO DESCRIPTION SEE ECR	REVISION BY RUI LIAN APPROVED BY JANE WU	DATE 05-13-2022 05-13-2022	TOLERANCES UNLESS OTHERWISE SPECIFIED DEC. INCH mm ANGLE X ±0.1 [±3] .XX ±0.02 [±0.5] .XXX ±0.005 [±0.13] XXXX ±0.0005 [±0.013] REMOVE BURRS & BREAK SHARP EDGES .003/.015 [0.08/.38] CORNER FILLETS .02 [5] MACHINED SURFACES .125 mm 1/2 INCH mm SHOWN IN [BRACKETS]	DRAWN BY: J.YAO DATE: 05-04-2015 APPROVED BY: D.ZHANG DATE: 05-04-2015 REFERENCE THIRD ANGLE PROJECTION	REGAL Regal Beloit America, Inc. DESCRIPTION MODEL-CFHP-56FR OUTLINE MATERIAL SIZE DWG NO HBC080 SHEET 1
---	---	---	----------------------------------	---	--	---