

PRODUCT INFORMATION PACKET

Model No: HBC110

Catalog No: HBC110

1.1 HP Pool Pump Motor, 1 phase, 3600 RPM, 230/115 V, 56J Frame, ODP



Regal and are trademarks of Regal Rexnord Corporation or one of its affiliated companies.
©2022 Regal Rexnord Corporation, All Rights Reserved. MC017097E

Nameplate Specifications

Output HP	1.1 Hp	Output KW	0.82 kW
Frequency	60 Hz	Voltage	230/115 V
Current	SF 6.0/12.0 A	Speed	3450 rpm
Service Factor	1	Phase	1
Duty	Continuous	Insulation Class	F
Frame	S56J	Enclosure	Drip Proof
Thermal Protection	Thermally Protected	Ambient Temperature	50 °C
UL	Recognized	CSA	Y
Number of Speeds	1		

Technical Specifications

Electrical Type	Permanent Split Capacitor, Single Or Dual Voltage	Starting Method	Across The Line
Poles	2	Rotation	Counterclockwise Pump End
Mounting	Round	Motor Orientation	Horizontal
Drive End Bearing	Ball	Opp Drive End Bearing	Ball
Frame Material	Rolled Steel	Shaft Type	7/16 Thread
Overall Length	12.73 in	Frame Length	6.38 in
Shaft Diameter	0.625 in	Shaft Extension	2.57 in
Outline Drawing	HBC110-S01	Connection Drawing	DD0000312-001

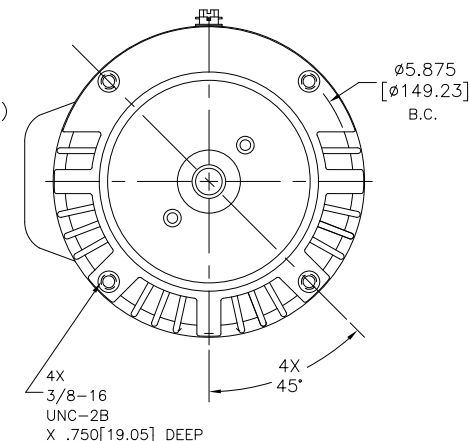
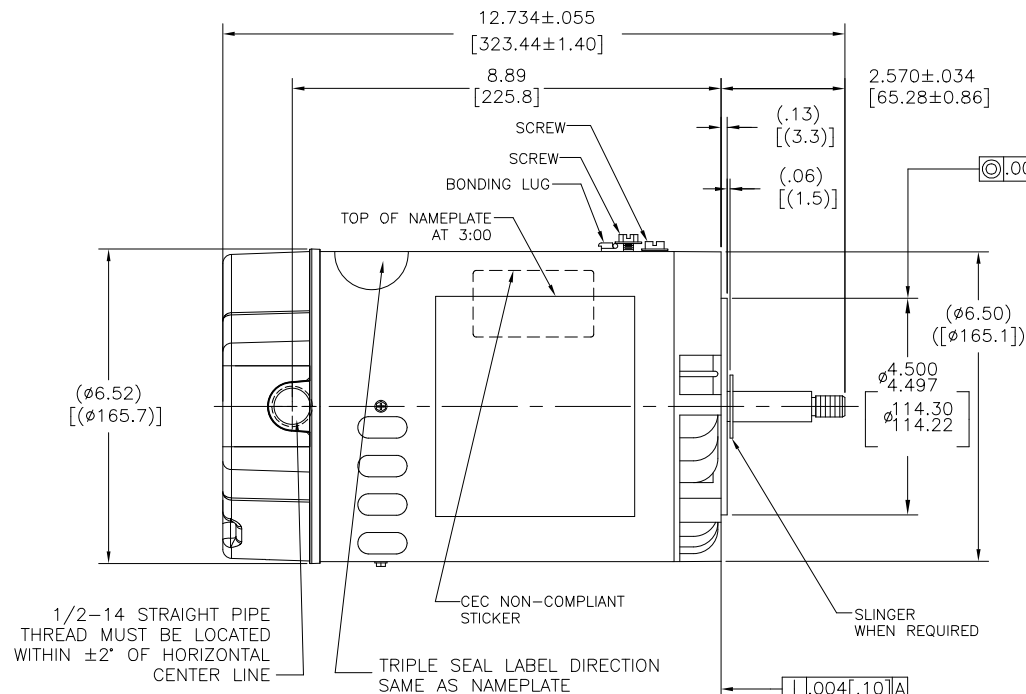
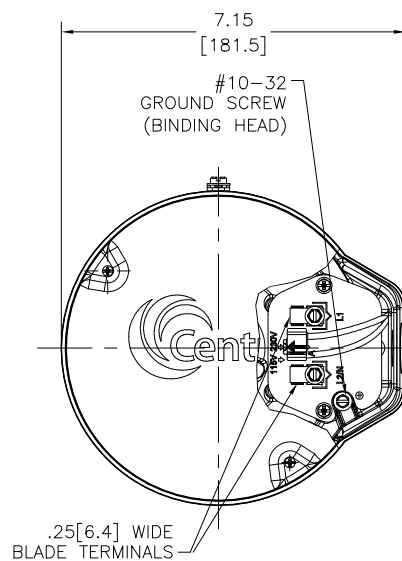
This is an uncontrolled document once printed or downloaded and is subject to change without notice. Date Created:05/14/2022

4

3

2

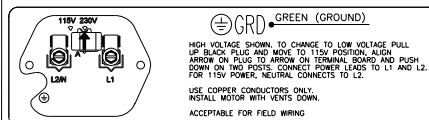
1



NAMEPLATE DATA

MODEL: F56AB76A01
CUST PN: HBC110
HP: 1.1 SF: 1.0
ROT: CCWPE
RPM: 3450
TYPE: CX
FORM: KJM
CODE: J
FRAME: 56 J
VOLTS: 230/115
AMPS: 6.0/12.0
MAX AMPS: —
SF AMPS: —
PH: 1 HZ: 60
INS: F AMB: 50°C
DUTY: CONT
ENCLOSURE: DP
THERMALLY-PROTECTED

EXTERNAL CONNECTION DIAGRAM



D0000312-007

NOTES

- PILOT DIAMETER IS CONCENTRIC WITH SHAFT CENTERLINE WITHIN .004[0.10] T.I.R.
- FACE OF MOUNTING FLANGE IS PERPENDICULAR TO SHAFT CENTERLINE WITHIN .004[0.102] T.I.R.
- SHAFT RUNOUT NOT TO EXCEED .002[0.051]
- END PLAY NOT TO EXCEED .010[0.254] MEASURED WITH NO THRUST
- FINISH PAINT TO BE SATIN BLACK.
- .44[11.2] WRENCH FLATS ON SHAFT—FOR ACCESS TO THIS WRENCH FLAT REMOVE END COVER.
- STAINLESS STEEL SHAFT EXT.
- LIMITS ON AMPLITUDE OF VIBRATION MEASURED AT BEARING HOUSING = .001.
- CONNECTED FOR 230 VOLTS. DUAL VOLTAGE MOTOR. SEE CONNECTION DIAGRAM TO CHANGE VOLTS TO 115V.
- CTQ REQUIREMENT SEE EP000105-008
- RoHS & REACH REQUIREMENT SEE EP000014.

- CRITICAL TO QUALITY CHARACTERISTICS (CTQs)
- PROCESS
 - ENGINEERING
 - APPLICATION
 - REGULATORY
 - LIFE

DRAWING REVISION
ECO
DATE
ECO DESCRIPTION
SEE ECR

REVISION BY
RUI LIAN
DATE
APPROVED BY
TRISTIA ZHAO

TOLERANCES UNLESS OTHERWISE SPECIFIED
DEC. INCH mm ANGLE
X ±0.1 [±3]
.XX ±0.02 [±0.5]
.XXX ±0.005 [±0.13]
XXX ±0.0005 [±0.013]
REMOVE BURRS & BREAK SHARP EDGES .003/.015 [0.08/.38]
CORNER FILLETS .02 [5]
MACHINED SURFACES .125/32 INCH/mm

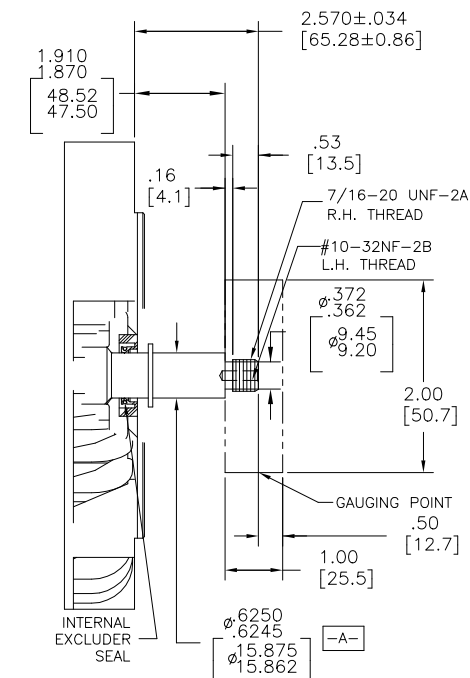
DRAWN BY:
J.YAO
DATE:
05-11-2015
APPROVED BY:
D.ZHANG
DATE:
05-11-2015

REFERENCE
—
THIRD ANGLE PROJECTION

REGAL Regal Beloit America, Inc.
DESCRIPTION
MODEL-CFHP-56FR
OUTLINE

MATERIAL
—
PROCESS/FINISH
—

SIZE DWG NO
C HBC110
SHEET
1



4

3

2

1