

PRODUCT INFORMATION PACKET

Model No: HBC150

Catalog No: HBC150

1.5 HP Pool Pump Motor, 1 phase, 3600 RPM, 230/115 V, 56J Frame, ODP



Regal and are trademarks of Regal Rexnord Corporation or one of its affiliated companies.

©2022 Regal Rexnord Corporation, All Rights Reserved. MC017097E

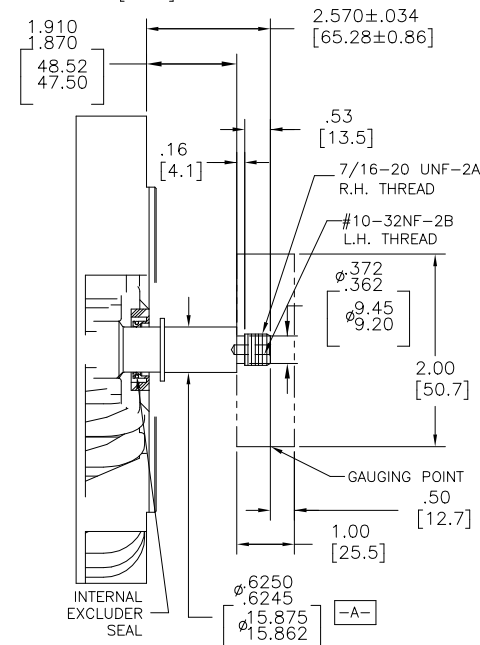
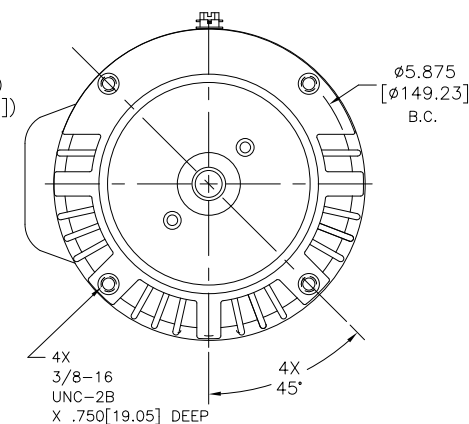
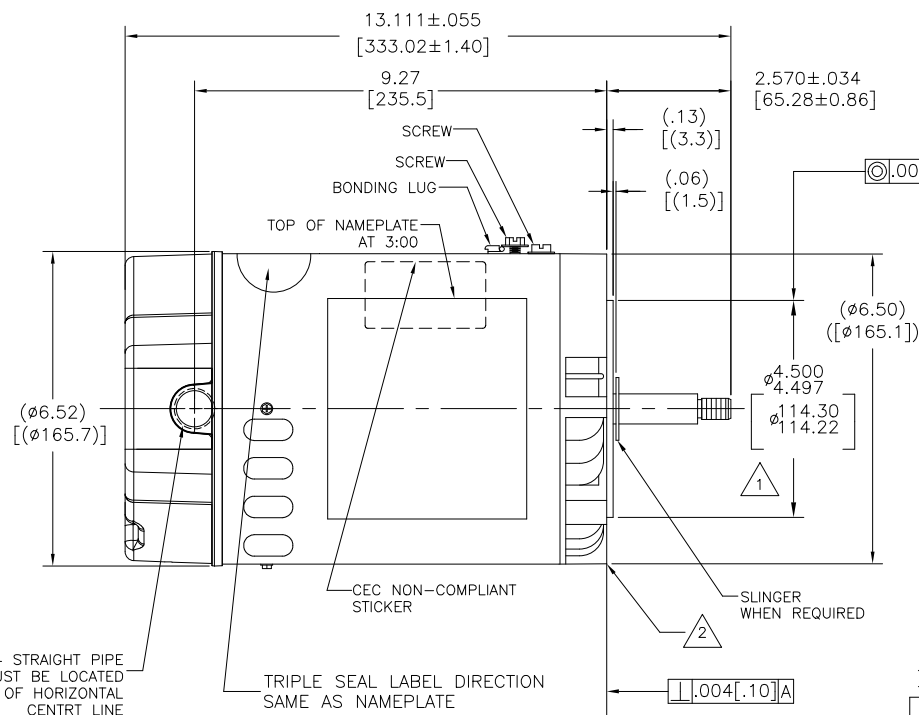
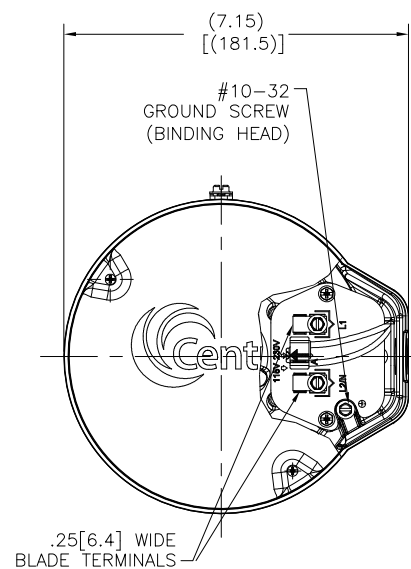
Nameplate Specifications

Output HP	1.5 Hp	Output KW	1.1 kW
Frequency	60 Hz	Voltage	230/115 V
Current	SF 7.2/14.4 A	Speed	3450 rpm
Service Factor	1	Phase	1
Duty	Continuous	Insulation Class	F
Frame	M56J	Enclosure	Drip Proof
Thermal Protection	Thermally Protected	Ambient Temperature	50 °C
UL	Recognized	CSA	Y
Number of Speeds	1		

Technical Specifications

Electrical Type	Permanent Split Capacitor, Single Or Dual Voltage	Poles	2
Rotation	Counterclockwise Pump End	Mounting	Round
Motor Orientation	Horizontal	Drive End Bearing	Ball
Opp Drive End Bearing	Ball	Frame Material	Rolled Steel
Shaft Type	7/16 Thread	Overall Length	13.11 in
Frame Length	6.75 in	Shaft Diameter	0.625 in
Shaft Extension	2.57 in		
Outline Drawing	HBC150-S01	Connection Drawing	D0000312-001.PCX

This is an uncontrolled document once printed or downloaded and is subject to change without notice. Date Created:05/14/2022



NAMEPLATE DATA		EXTERNAL CONNECTION DIAGRAM	NOTES
MODEL: F56AB77A01 CUST PN: HBC150 HP: 1.5 SF: 1.0 ROT: CCWPE RPM: 3450 TYPE: CX FORM: - VOLTS: 230/115 MAX AMPS: - SF AMPS: - PH: 1 INS: F DUTY: CONT ENCLOSURE: DP THERMALLY-PROTECTED		<p>D0000312-007</p>	<p>1. PILOT DIAMETER IS CONCENTRIC WITH SHAFT CENTERLINE WITHIN .004[0.10] T.I.R.</p> <p>2. FACE OF MOUNTING FLANGE IS PERPENDICULAR TO SHAFT CENTERLINE WITHIN .004[0.102] T.I.R.</p> <p>3. SHAFT RUNOUT NOT TO EXCEED .002[0.051]</p> <p>4. END PLAY NOT TO EXCEED .010[0.254] MEASURED WITH NO THRUST</p> <p>5. FINISH PAINT TO BE SATIN BLACK.</p> <p>6. .44[11.2] WRENCH FLATS ON SHAFT-FOR ACCESS TO THIS WRENCH FLAT REMOVE END COVER.</p> <p>7. STAINLESS STEEL SHAFT EXT.</p> <p>8. LIMITS ON AMPLITUDE OF VIBRATION MEASURED AT BEARING HOUSING = .001.</p> <p>9. CONNECTED FOR 230 VOLTS. DUAL VOLTAGE MOTOR. SEE CONNECTION DIAGRAM TO CHANGE VOLTS TO 115V.</p> <p>10. CTO REQUIREMENT SEE EP000105-008</p> <p>11. RoHS & REACH REQUIREMENT SEE EP000014.</p>

PERFORMANCE CURVE		APPROVED SAMPLE	
16345211		-	
UL COMPONENT		CSA	
FILE#	CCN#	FILE#	GUIDE#
E25022	XEWR2/8	LR4642	4211-01
CUSTOMER		DISTRIBUTION	

CRITICAL TO QUALITY CHARACTERISTICS (CTQs)		DRAWING REVISION	REVISION BY	DATE	TOLERANCES UNLESS OTHERWISE SPECIFIED
ECO		ECO	RUI LIAN	05-13-2022	DEC. INCH mm ANGLE
ECO-0217731		ECO	JANE WU	05-13-2022	X ±.01 [±.3]
ECO DESCRIPTION		ECO DESCRIPTION			.XX ±0.02 [±0.5]
SEE ECO		SEE ECO			.XXX ±0.005 [±0.13]
					XXXX ±0.0005 [±0.013]
					REMOVE BURRS & BREAK SHARP EDGES .003/.015 [0.08.38]
					CORNER FILLETS .02 [5]
					MACHINED SURFACES .125 [3.18]
					mm SHOWN IN [BRACKETS]

DRAWN BY:		DATE:	
J.YAO		05-21-2015	
APPROVED BY:		DATE:	
D.ZHANG		05-21-2015	
REFERENCE		MATERIAL	
-		-	
THIRD ANGLE PROJECTION		SIZE (DWG NO)	
-		HBC150	

REGAL™ Regal Beloit America, Inc.		DESCRIPTION	
-		MODEL-CFHP-56FR OUTLINE	
PROCESS/FINISH		SHEET	
-		1	