

# PRODUCT INFORMATION PACKET

Model No: HBC200

Catalog No: HBC200

2.0 HP Pool Pump Motor, 1 phase, 3600 RPM, 230/115 V, Frame, ODP



Regal and are trademarks of Regal Rexnord Corporation or one of its affiliated companies.  
©2022 Regal Rexnord Corporation, All Rights Reserved. MC017097E

### Nameplate Specifications

|                    |                     |                     |                 |
|--------------------|---------------------|---------------------|-----------------|
| Output HP          | 2.0 Hp              | Output KW           | 1.5 kW          |
| Frequency          | 60 Hz               | Voltage             | 230/115 V       |
| Current            | 9.2/18.4 A          | Speed               | 3450 rpm        |
| Service Factor     | 1                   | Phase               | 1               |
| Duty               | Continuous          | Insulation Class    | F               |
| Frame              | P56J                | Enclosure           | Open Drip Proof |
| Thermal Protection | Thermally Protected | Ambient Temperature | 50 °C           |
| UL                 | Recognized          | CSA                 | Y               |
| Number of Speeds   | 1                   |                     |                 |

### Technical Specifications

|                       |   |                   |              |
|-----------------------|---|-------------------|--------------|
| Electrical Type       | Permanent Split Capacitor, Single Or Dual Voltage | Poles             | 2            |
| Rotation              | Counterclockwise Pump End                         | Mounting          | Round        |
| Motor Orientation     | Horizontal  | Drive End Bearing | Ball         |
| Opp Drive End Bearing | Ball  | Frame Material    | Rolled Steel |
| Shaft Type            | 7/16 Thread                                       | Overall Length    | 14.36 in     |
| Frame Length          | 8.00 in   | Shaft Diameter    | 0.437 in     |
| Outline Drawing       | HBC200-S01  |                   |              |

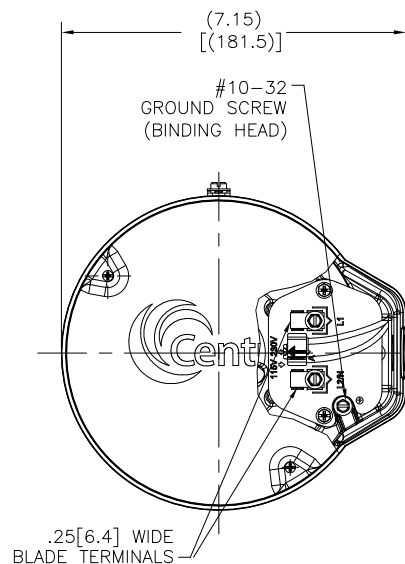
This is an uncontrolled document once printed or downloaded and is subject to change without notice. Date Created:05/14/2022

4

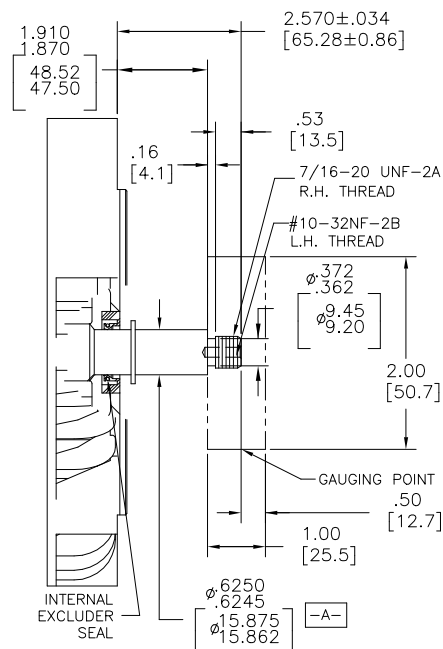
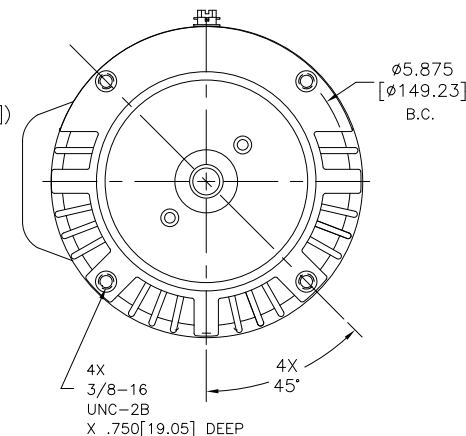
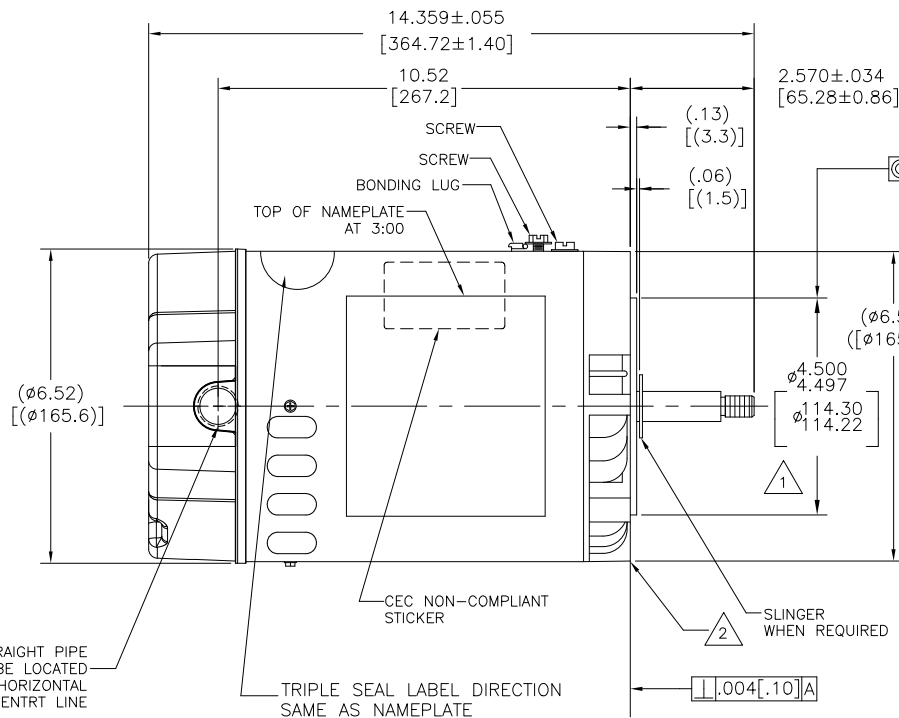
3

2

1



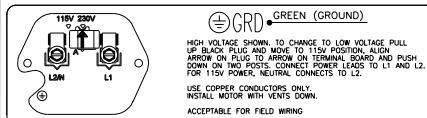
1/2-14 STRAIGHT PIPE  
THREAD MUST BE LOCATED  
WITHIN ±2" OF HORIZONTAL  
CENTRT LINE



## NAMEPLATE DATA

MODEL: F56AB78A01  
CUST PN: HBC200  
HP: 2.0 SF: 1.0  
ROT: CCWPE  
RPM: 3450  
TYPE: CX  
FORM: -  
VOLTS: 230/115  
AMPS: 9.2/18.4  
MAX AMPS: -  
SF AMPS: -  
PH: 1 HZ: 60  
INS: F AMB: 50?  
DUTY: CONT  
ENCLOSURE: ODP  
THERMALLY-PROTECTED

## EXTERNAL CONNECTION DIAGRAM



D0000312-007

## NOTES

- PILOT DIAMETER IS CONCENTRIC WITH SHAFT CENTERLINE WITHIN .004[0.10] T.I.R.
- FACE OF MOUNTING FLANGE IS PERPENDICULAR TO SHAFT CENTERLINE WITHIN .004[0.102] T.I.R.
- SHAFT RUNOUT NOT TO EXCEED .002[0.051]
- END PLAY NOT TO EXCEED .010[0.254] MEASURED WITH NO THRUST
- FINISH PAINT TO BE SATIN BLACK.
- .44[11.2] WRENCH FLATS ON SHAFT-FOR ACCESS TO THIS WRENCH FLAT REMOVE END COVER.
- STAINLESS STEEL SHAFT EXT.
- LIMITS ON AMPLITUDE OF VIBRATION MEASURED AT BEARING HOUSING = .001.
- CONNECTED FOR 230 VOLTS. DUAL VOLTAGE MOTOR. SEE CONNECTION DIAGRAM TO CHANGE VOLTS TO 115V.
- CTQ REQUIREMENT SEE EP000105-008
- RoHS & REACH REQUIREMENT SEE EP000014.

## PERFORMANCE CURVE

## APPROVED SAMPLE

SS0092841

-

UL COMPONENT

CSA

FILE#

CCN#

FILE#

GUIDE#

E25022

XEW2/8

LR4642

4211-01

CUSTOMER

DISTRIBUTION

- CRITICAL TO QUALITY CHARACTERISTICS (CTQs)
- PROCESS
  - ENGINEERING
  - APPLICATION
  - REGULATORY
  - LIFE

DRAWING REVISION  
K  
ECO  
ECR-0217731  
ECO DESCRIPTION  
SEE ECR

REVISION BY  
RUI LIAN  
APPROVED BY  
JANE WU

DATE  
05-13-2022  
DATE  
05-13-2022

TOLERANCES UNLESS OTHERWISE SPECIFIED  
DEC. INCH MM ANGLE  
X ±0.1 [±3]  
.XX ±0.02 [±0.5]  
.XXX ±0.005 [±0.13]  
XXXX ±0.0005 [±0.013]  
REMOVE BURRS & BREAK SHARP EDGES .003/.015 [0.08/.38]  
CORNER FILLETS .02 [5]  
MACHINED SURFACES .125 [3.2]  
mm SHOWN IN [BRACKETS]

DRAWN BY:  
D.ZHANG  
DATE:  
09-07-2016  
APPROVED BY:  
B.SHEN  
DATE:  
09-07-2016  
REFERENCE  
THIRD ANGLE PROJECTION

REGAL Regal Beloit America, Inc.

DESCRIPTION  
MODEL-PFHP-56FR  
OUTLINE

MATERIAL  
PROCESS/FINISH

SIZE DWG NO  
HBC200  
SHEET  
1

4

3

2

3 of 3

1