

PRODUCT INFORMATION PACKET

Model No: HBQ125

Catalog No: HBQ125

1.25 HP Pool Pump Motor, 1 phase, 3600 RPM, 230/115 V, 56Y Frame, ODP



Regal and are trademarks of Regal Rexnord Corporation or one of its affiliated companies.
©2022 Regal Rexnord Corporation, All Rights Reserved. MC017097E

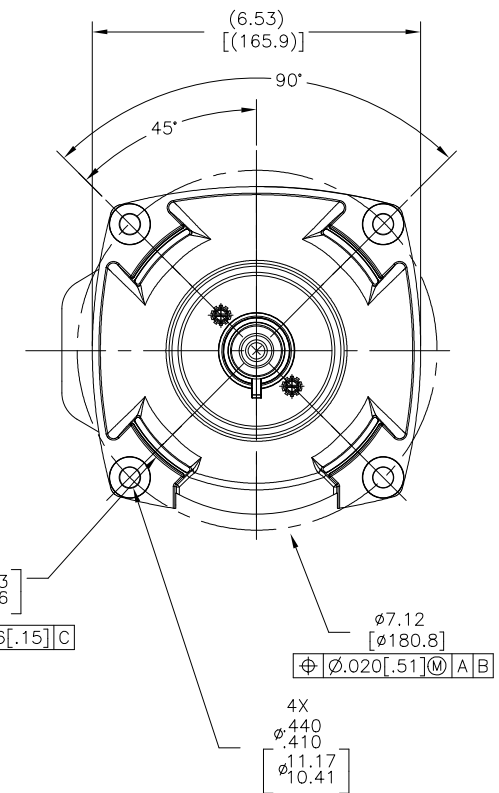
Nameplate Specifications


Output HP	1.25 Hp	Output KW	0.93 kW
Frequency	60 Hz	Voltage	230/115 V
Current	6.6/13.2 A	Speed	3450 rpm
Service Factor	1	Phase	1
Duty	Continuous	Insulation Class	F
Frame	P56Y	Enclosure	Drip Proof
Thermal Protection	Thermally Protected	Ambient Temperature	50 °C
UL	Recognized	CSA	Y

Technical Specifications

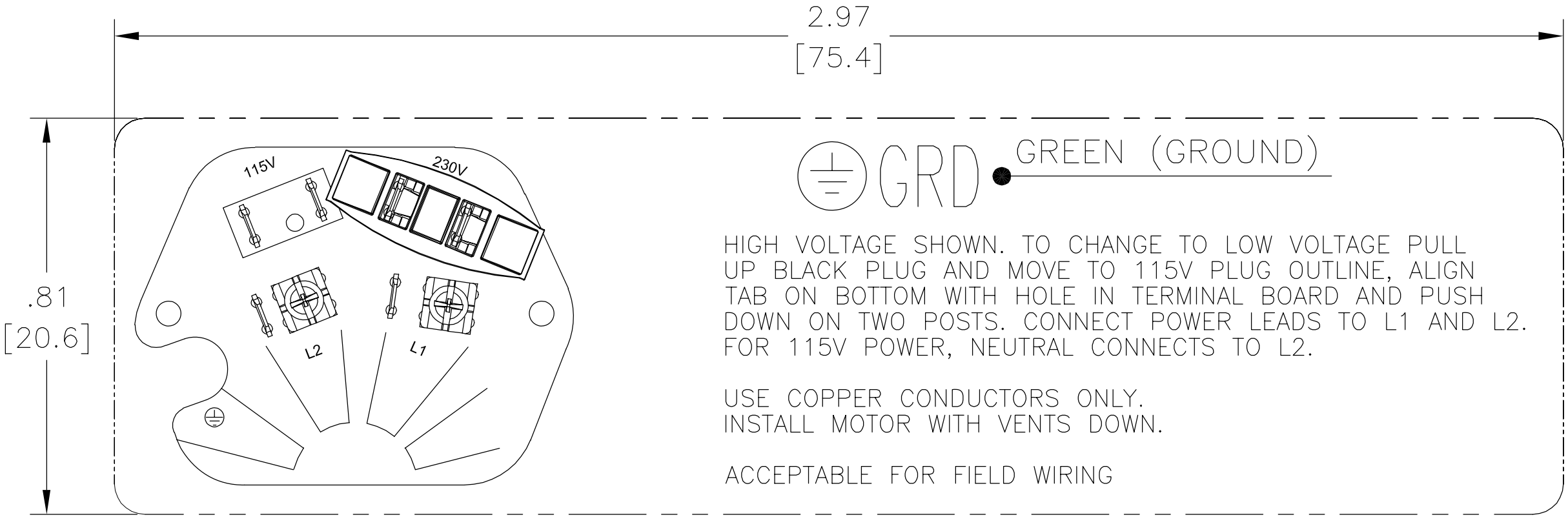
Electrical Type	Permanent Split Capacitor, Single Or Dual Voltage	Poles	2
Rotation	Counterclockwise Pump End	Mounting	Round
Motor Orientation	Horizontal	Drive End Bearing	Ball
Opp Drive End Bearing	Ball	Frame Material	Rolled Steel
Shaft Type	1/2 Threaded	Overall Length	13.05 in
Frame Length	8.27 in	Shaft Diameter	0.625 in
Shaft Extension	0.91 in		
Outline Drawing	HBQ125-S01	Connection Drawing	D0000312-001

This is an uncontrolled document once printed or downloaded and is subject to change without notice. Date Created:05/12/2022




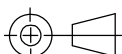
CRITICAL TO QUALITY CHARACTERISTICS (CTQs)	DRAWING REVISION: R	REVISION BY: RUI.LIAN	DATE: 05-10-2022	TOLERANCES UNLESS OTHERWISE SPECIFIED: DEC. INCH mm .X .01 [-.03] .01 .XX ±0.02 [-0.5] .XXX ±0.005 [-0.13] .XXXX ±0.0005 [-0.013] REMOVE BURRS & BREAK SHARP EDGES .003(.01) [-0.8] CORNER RADIUS .02 [-.5] MACHINED SURFACES	DRAWN BY: R.LIAN DATE: 05-11-2015 APPROVED BY: J.H.WU DATE: 05-11-2015 REFERENCE:	 Regal Beloit America, Inc.	DESCRIPTION: MODEL-CFHP-56FR OUTLINE	MATERIAL: - PROCESS/FINISH: -	SIZE / DWG NO: C HRO125	SHEET 1	
	ECO: ECO-0217625	APPROVED BY: JANE.WU	DATE: 05-10-2022								ANGLE: ±0.5°
	ECO DESCRIPTION: SEE ECO										
	COPYRIGHT REGAL, BELLOIT AMERICA, INC. ALL RIGHTS RESERVED. PROPRIETARY AND CONFIDENTIAL INFORMATION - THIS DOCUMENT IS THE PROPERTY OF REGAL, BELLOIT AMERICA, INC. AND CONTAINS COMPANY OWNERS' PROPRIETARY INFORMATION. ANY PERSON, CORPORATION OR OTHER FIRM RECEIVING IT IS DEEMED TO BE RECEIVING IT TO AGREE THAT IT AND/OR ANY PART OF IT, SHALL BE DISCLOSED TO ANY PERSON, CORPORATION OR OTHER ENTITY, DUPLICATED, AND/OR USED, EXCEPT AS EXPRESSLY APPROVED IN WRITING IN ADVANCE BY OWNER. ANY VIOLATION SHALL BE RETURNED TO OWNER UPON REQUEST. IT MAY BE SUBJECT TO CERTAIN RESTRICTIONS UNDER APPLICABLE EXPORT CONTROL LAWS AND REGULATIONS.										THIRD ANGLE PROJECTION
(P) PROCESS											
(E) ENGINEERING											
(A) APPLICATION											
(R) REGULATORY											
(L) LIFE											

REV	ECO	REV BY	DATE	APPD	DATE
B	ECO-0026812	J. JOHNS	06/11/2012	M. OVERHOLSER	06/11/2012

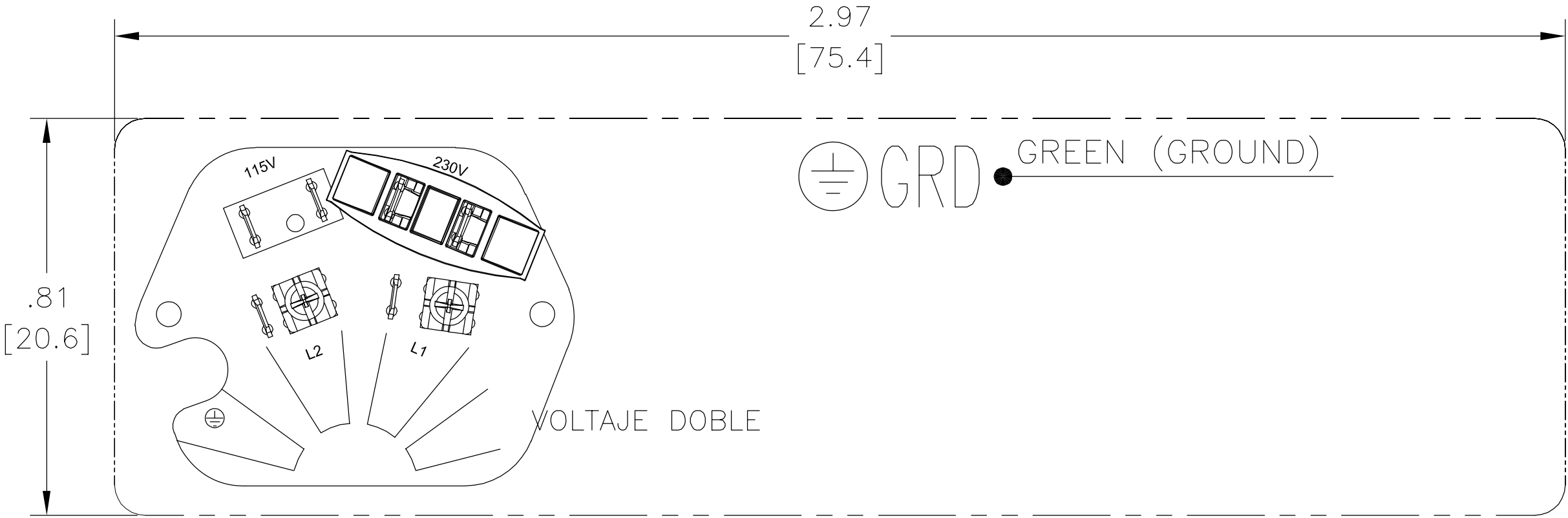


USED FOR DUAL VOLTAGE – 230 VOLTS

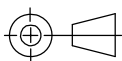
- NOTE:
- 1. FOR USE WITH 2514896 NAME PLATE BLANK.
 - 2. _____ INDICATES DIMENSIONAL LIMITS.
 - 3. DIE MUST PRODUCE A LEGIBLE IMPRESSION.

GEOMETRIC CHARACTERISTICS & SYMBOLS ∇ FLATNESS — STRAIGHTNESS ∠ ANGULARITY ⊥ PERPENDICULARITY (SQUARENESS) // PARALLELISM ○ ROUNDNESS (CIRCULARITY) ⊘ CYLINDRICITY △ PROFILE OF ANY SURFACE ⌒ PROFILE OF ANY LINE ↑ RUNOUT ⊕ TRUE POSITION ◎ CONCENTRICITY ≡ SYMMETRY ASME Y14.5M 1994	UNLESS OTHERWISE SPECIFIED DIM. TOLERANCES ARE AS FOLLOWS: INCH X XX XXX XXXX ±.1 ±.02 ±.005 ±.0005 mm ±0.5 ±0.13 ±0.013 ANG. ±.50 DEG REMOVE BURRS & BREAK SHARP EDGES: INCH .003–.015 mm 0.1–0.4 CORNER FILLETS TO: INCH .020 mm 0.5 MACHINE SURFACES: INCH 125 mm 3.2 METRIC DIMS. SHOWN IN [BRACKETS]	DR BY: J. JOHNS	02/07/2011	 REGAL-BELOIT CORPORATION	
		APPD: FS3	02/07/2011	DESCRIPTION CONN DIAGRAM—NAMEPLATE	
		THIRD ANGLE PROJECTION 	EDS DATE 11-11-2011 FORMAT REV H	SIZE A DWG NO D0000312—001	
		CONFIDENTIAL: THIS DRAWING AND ITS INFORMATION ARE THE EXCLUSIVE AND CONFIDENTIAL PROPERTY OF REGAL—BELOIT CORPORATION AND ARE NOT TO BE DISCLOSED, DUPLICATED, DISTRIBUTED OR OTHERWISE USED WITHOUT THE WRITTEN CONSENT OF REGAL—BELOIT CORPORATION. —ALL RIGHTS RESERVED.		SCALE NONE SHEET 1	

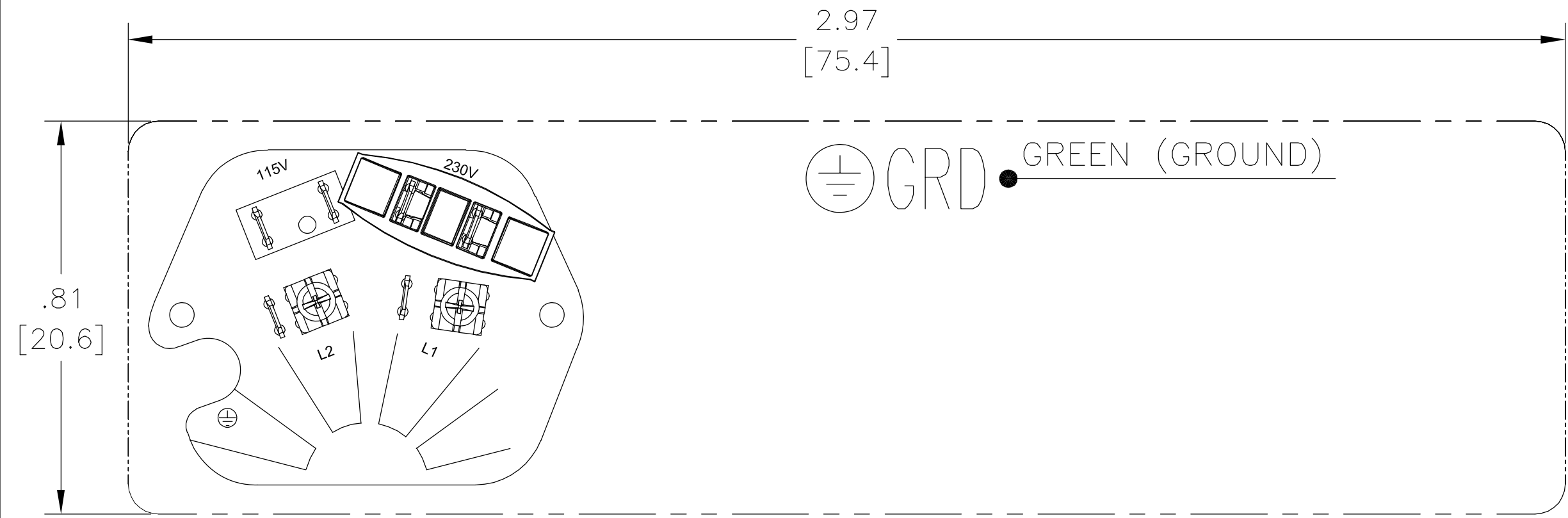
REVISION:	ECO	REVISADO POR:	FECHA:	APROBADO POR:	FECHA:
B	ECO-0026812	J. JOHNS	06/11/2012	M. OVERHOLSER	06/11/2012



- NOTAS:
- 1. PARA USARSE CON LA PLACA DE DATOS EN BLANCO 616231.
 - 2. INDICA LIMITES DIMENSIONALES.
 - 3. EL DADO DEBE PRODUCIR UNA IMPRESION LEGIBLE.

CARACTERISTICAS DE GEOMETRIA Y SIMBOLOS ∇ PLANICIDAD — RECTITUD ∠ ANGULARIDAD ⊥ PERPENDICULARIDAD (A ESCUADRA) // PARALELISMO ○ REDONDEZ (CIRCULARIDAD) ⊘ CILINDRICIDAD ⌒ PERFIL DE CUALQUIER SUPERFICIE ⌒ PERFIL DE CUALQUIER LINEA ↑ VARIACION ⊕ POSICION REAL ◎ CONCENTRICIDAD ≡ SIMETRIA	A MENOS QUE SE ESPECIFIQUE DE OTRA MANERA, LAS TOLERANCIAS DE LAS DIMS: SON LAS SIGUIENTES: X XX XXX XXXX PULG ±.1 ±.02 ±.005 ±.0005 mm ±0.5 ±0.13 ±0.013 ANG. ±.50 GRADOS ELIMINAR REBABAS Y ORILLAS FILOSAS DEL BORDE. PULG .003-.015 mm 0.1-0.4 FILETEAR ESQUINA: PULG .020 mm 0.5 MAQUINAR SUPERFICIES PULG 125 mm 3.2	DIBUJADO POR: J. JOHNS		02/07/2011		<div>REGAL</div> REGAL-BELOIT CORPORATION		
		APROBADO POR: FS3		02/07/2011		DESCRIPCION: CONN DIAGRAM-NAMEPLATE		
		TERCER ANGULO DE PROYECCION		FECHA EDS: 11-11-2011 REV. FORMATO: H				
		CONFIDENCIAL: ESTE DIBUJO Y SU INFORMACION SON PROPIEDAD DE USO EXCLUSIVO Y CONFIDENCIAL DE REGAL-BELOIT CORPORATION Y NO DEBERAN SER REVELADOS, Duplicados, DISTRIBUIDOS O USARSE DE OTRA MANERA SIN EL CONSENTIMIENTO ESCRITO DE REGAL-BELOIT CORPORATION.-TODOS LOS DERECHOS RESERVADOS.				TAMAÑO: A	NUMERO DE DIBUJO: D0000312-001	
		ASME Y14.5M 1994 DIMS METRICAS MOSTRADAS [PARENTESIS]				ESCALA: NONE	HOJA: 1	

版本	ECO	编制	日期	批准	日期
B	ECO-0026812	J. JOHNS	06/11/2012	M. OVERHOLSER	06/11/2012



用于双电压230伏特

技术要求

- 1、用于616231空白铭牌。
- 2、----表明尺寸范围。
- 3、字迹必须清晰。

<div>形位公差</div> <div><div>□</div>平面度</div> <div><div>—</div>直线度</div> <div><div>∠</div>倾斜度</div> <div><div>⊥</div>垂直度</div> <div><div>//</div>平行度</div> <div><div>○</div>圆度</div> <div><div>⊙</div>圆柱度</div> <div><div>△</div>面轮廓度</div> <div><div>∩</div>线轮廓度</div> <div><div>↗</div>圆跳动</div> <div><div>⊕</div>位置度</div> <div><div>◎</div>同轴度</div> <div><div>≡</div>对称度</div>
--

ASME Y14.5M 1994