

PRODUCT INFORMATION PACKET



Model No: HBA345
Catalog No: HBA345

Centurion PRO ® Motors Pool Pump Motor, 3.45 HP, 1 Ph, 60 Hz, 208-230 V, 3600 RPM, Y56Y Frame, DP



Regal and Century are trademarks of Regal Rexnord Corporation or one of its affiliated companies.
©2022 Regal Rexnord Corporation, All Rights Reserved. MC017097E





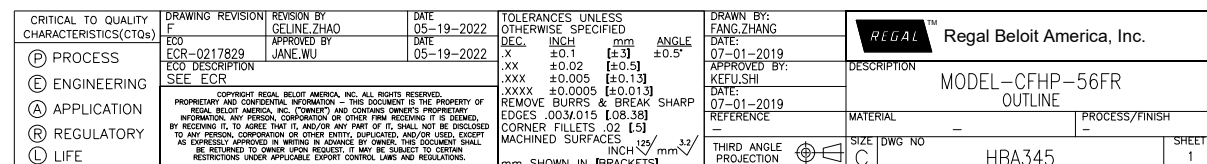
Nameplate Specifications

Output HP	3.45 Hp	Output KW	2.6 kW
Frequency	60 Hz	Voltage	208-230 V
Current	15.0-13.6 A	Speed	3450 rpm
Service Factor	1	Phase	1
Duty	Continuous	Insulation Class	F
Frame	Y56Y	Enclosure	Drip Proof
Thermal Protection	Thermally Protected	Ambient Temperature	50 °C
UL	Recognized	CSA	Y

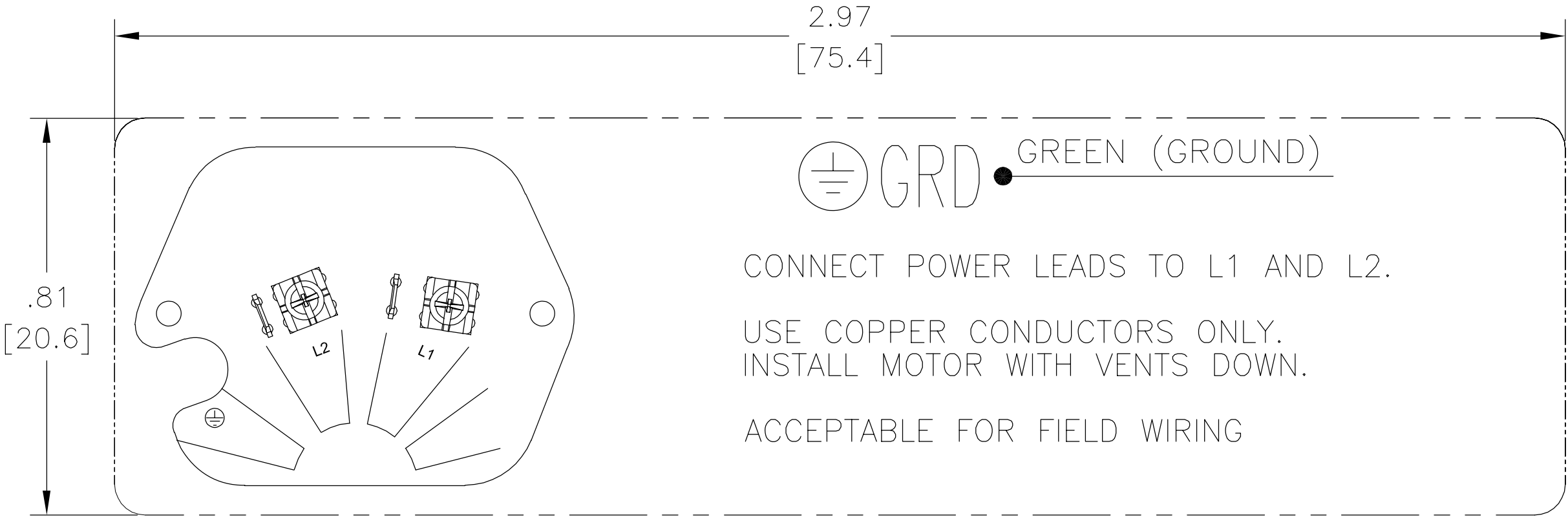
Technical Specifications

Electrical Type	Permanent Split Capacitor, Single Or Dual Voltage	Poles	2
Rotation	Counterclockwise Pump End	Mounting	Round
Motor Orientation	Horizontal	Drive End Bearing	Ball
Opp Drive End Bearing	Ball	Frame Material	Rolled Steel
Shaft Type	1/2 Threaded	Overall Length	15.05 in
Frame Length	10.27 in	Shaft Diameter	0.625 in
Shaft Extension	0.91 in		
Connection Drawing	D0000312-003	Outline Drawing	HBA345

This is an uncontrolled document once printed or downloaded and is subject to change without notice. Date Created:11/29/2022


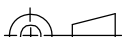


REV	ECO	REV BY	DATE	APPD	DATE
B	ECO-0026812	J. JOHNS	06/11/2012	M. OVERHOLSER	06/11/2012

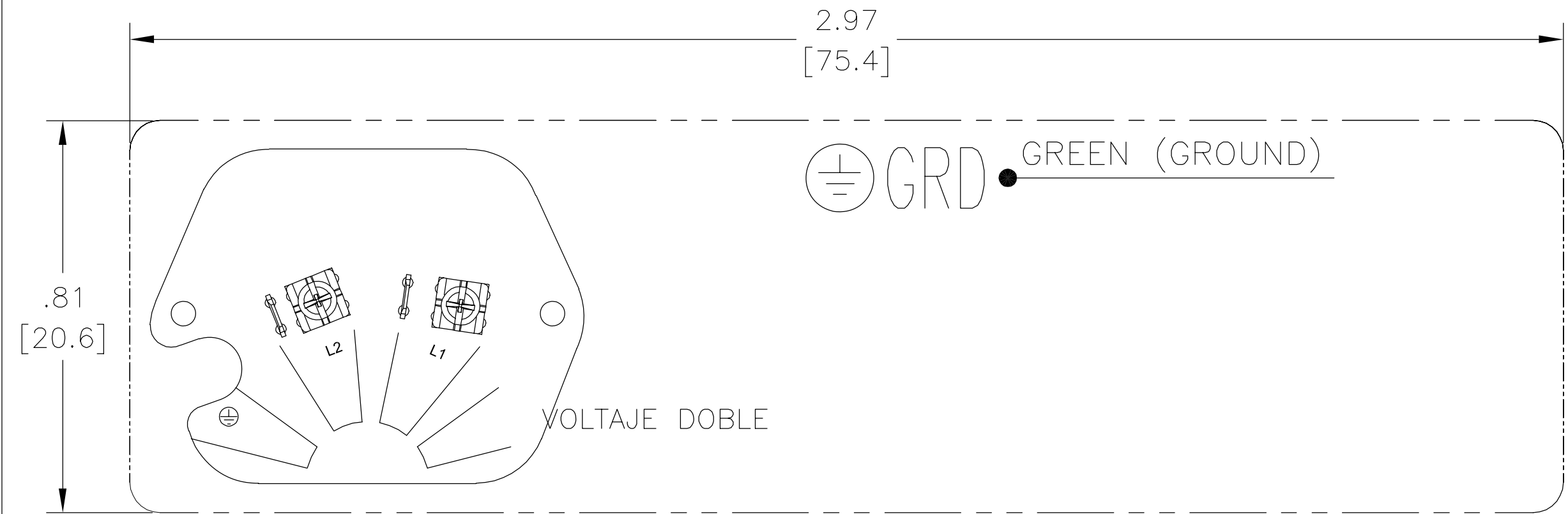


USED FOR 230 VOLTAGE — SINGLE SPEED


- NOTE:
- 1. FOR USE WITH 2514896 NAME PLATE BLANK.
 - 2. ——— INDICATES DIMENSIONAL LIMITS.
 - 3. DIE MUST PRODUCE A LEGIBLE IMPRESSION.

GEOMETRIC CHARACTERISTICS & SYMBOLS ∇ FLATNESS — STRAIGHTNESS ∠ ANGULARITY ⊥ PERPENDICULARITY (SQUARENESS) // PARALLELISM ○ ROUNDNESS (CIRCULARITY) ⊘ CYLINDRICITY △ PROFILE OF ANY SURFACE ⌒ PROFILE OF ANY LINE ↑ RUNOUT ⊕ TRUE POSITION ◎ CONCENTRICITY ≡ SYMMETRY ASME Y14.5M 1994	UNLESS OTHERWISE SPECIFIED DIM. TOLERANCES ARE AS FOLLOWS: INCH X XX XXX XXXX mm ±.1 ±.02 ±.005 ±.0005 ANG. ±.50 DEG REMOVE BURRS & BREAK SHARP EDGES: INCH .003-.015 mm 0.1-0.4 CORNER FILLETS TO: INCH .020 mm 0.5 MACHINE SURFACES: INCH 125 mm 3.2 METRIC DIMS. SHOWN IN [BRACKETS]	DR BY: J. JOHNS	02/07/2011	 REGAL-BELOIT CORPORATION		
		APPD: FS3	02/07/2011	DESCRIPTION CONN DIAGRAM-NAMEPLATE		
		THIRD ANGLE PROJECTION 	EDS DATE 11-11-2011 FORMAT REV H			
		CONFIDENTIAL: THIS DRAWING AND ITS INFORMATION ARE THE EXCLUSIVE AND CONFIDENTIAL PROPERTY OF REGAL-BELOIT CORPORATION AND ARE NOT TO BE DISCLOSED, DUPLICATED, DISTRIBUTED OR OTHERWISE USED WITHOUT THE WRITTEN CONSENT OF REGAL-BELOIT CORPORATION. -ALL RIGHTS RESERVED.			SIZE A	DWG NO D0000312-003
					SCALE NONE	SHEET 1

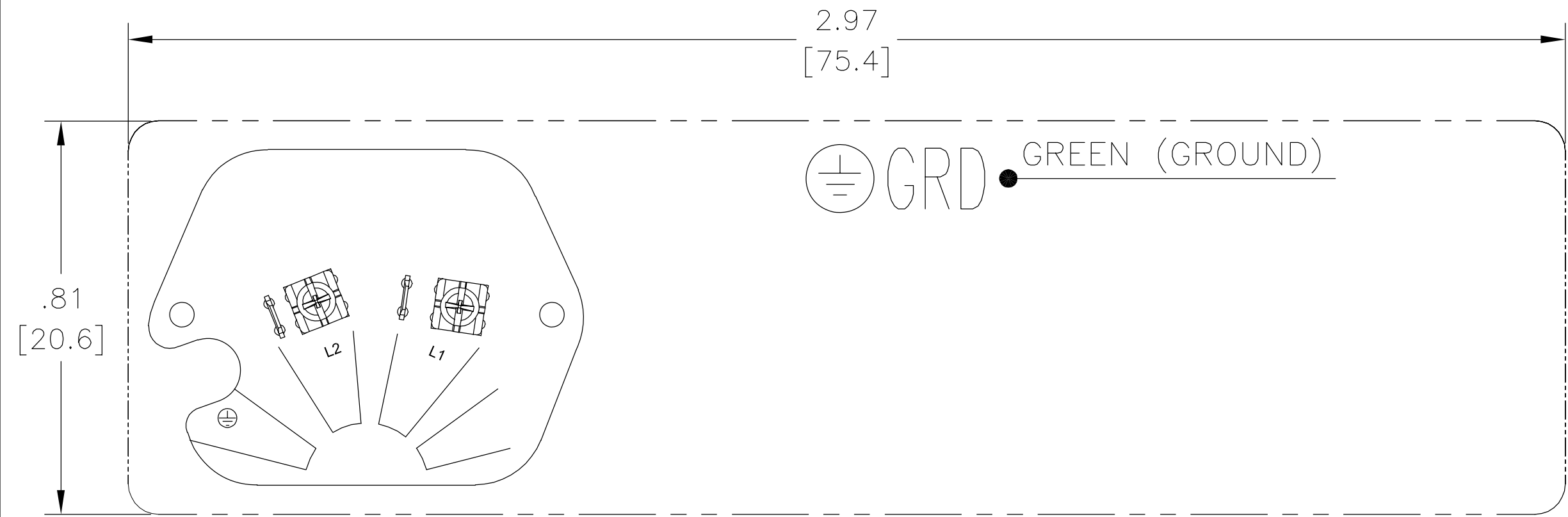
REVISION:	ECO	REVISADO POR:	FECHA:	APROBADO POR:	FECHA:
B	ECO-0026812	J. JOHNS	06/11/2012	M. OVERHOLSER	06/11/2012



- NOTAS:
1. PARA USARSE CON LA PLACA DE DATOS EN BLANCO 616231.
 2. INDICA LIMITES DIMENSIONALES.
 3. EL DADO DEBE PRODUCIR UNA IMPRESION LEGIBLE.

CARACTERISTICAS DE GEOMETRIA Y SIMBOLOS ∇ PLANICIDAD — RECTITUD ∠ ANGULARIDAD ⊥ PERPENDICULARIDAD (A ESCUADRA) // PARALELISMO ○ REDONDEZ (CIRCULARIDAD) ⊘ CILINDRICIDAD ⌒ PERFIL DE CUALQUIER SUPERFICIE ⌒ PERFIL DE CUALQUIER LINEA ↑ VARIACION ⊕ POSICION REAL ◎ CONCENTRICIDAD ≡ SIMETRIA	A MENOS QUE SE ESPECIFIQUE DE OTRA MANERA, LAS TOLERANCIAS DE LAS DIMS. SON LAS SIGUIENTES: <div><div>X</div><div>XX</div><div>XXX</div><div>XXXX</div></div> <div>PULG ±.1 ±.02 ±.005 ±.0005</div> <div>mm ±0.5 ±0.13 ±0.013</div> <div>ANG. ±.50 GRADOS</div> <div>ELIMINAR REBABAS Y ORILLAS FILOSAS DEL BORDE.</div> <div>PULG .003-.015 mm 0.1-0.4</div> <div>FILETEAR ESQUINA: PULG .020 mm 0.5</div> <div>MAQUINAR SUPERFICIES</div> <div>PULG 125 mm 3.2</div>	DIBUJADO POR: J. JOHNS		02/07/2011		<div>REGAL</div> REGAL-BELOIT CORPORATION			
		APROBADO POR: FS3		02/07/2011		DESCRIPCION: CONN DIAGRAM-NAMEPLATE			
		TERCER ANGULO DE PROYECCION		FECHA EDS: 11-11-2011		TAMAÑO: A		NUMERO DE DIBUJO: D0000312-003	
				REV. FORMATO: H		ESCALA: NONE		HOJA: 1	
		CONFIDENCIAL: ESTE DIBUJO Y SU INFORMACION SON PROPIEDAD DE USO EXCLUSIVO Y CONFIDENCIAL DE REGAL-BELOIT CORPORATION Y NO DEBERAN SER REVELADOS, DUPLICADOS, DISTRIBUIDOS O USARSE DE OTRA MANERA SIN EL CONSENTIMIENTO ESCRITO DE REGAL-BELOIT CORPORATION.-TODOS LOS DERECHOS RESERVADOS.							
ASME Y14.5M 1994		DIMS METRICAS MOSTRADAS [PARENTESIS]							

版本	ECO	编制	日期	批准	日期
B	ECO-0026812	J. JOHNS	06/11/2012	M. OVERHOLSER	06/11/2012



用于230伏特-单速度

技术要求

- 1、用于616231空白铭牌。
- 2、----表明尺寸范围。
- 3、字迹必须清晰。

<div>形位公差</div> <div><div>□ 平面度</div><div>— 直线度</div><div>∠ 倾斜度</div><div>⊥ 垂直度</div><div>// 平行度</div><div>○ 圆度</div><div>⊙ 圆柱度</div><div>△ 面轮廓度</div><div>⌒ 线轮廓度</div><div>↗ 圆跳动</div><div>⊕ 位置度</div><div>◎ 同轴度</div><div>≡ 对称度</div></div> <div>ASME Y14.5M 1994</div>	<div>除另有注明</div> <div>尺寸公差如下:</div> <div><div>英寸</div><div>毫米</div><div>角度</div><div>清理毛刺和尖棱</div><div>英寸</div><div>毫米</div><div>内圆角</div><div>英寸</div><div>毫米</div><div>表面粗糙度</div><div>英制</div><div>米制</div></div> <div>米制尺寸显示在[]</div>	绘图: <div>J. JOHNS</div>	02/07/2011	<div><div>REGAL</div><div>REGAL-BELOIT CORPORATION</div></div>	
		批准: <div>FS3</div>	02/07/2011	名称 <div>CONN DIAGRAM-NAMEPLATE</div>	
		第三角投影 <div></div>	图纸格式发布日期 11-11-2011 图纸格式版本 H	图幅 <div>A</div> 图号 <div>D0000312-003</div>	
		机密:本图纸及相关信息所有权归REGAL-BELOIT CORPORATION。 未经REGAL-BELOIT CORPORATION书面授权，不得泄露、复制、传播或作其他用途。--版权所有			比例 <div>NONE</div> 页号 <div>1</div>