

FLOW STAR® WATER BONDED SKIMMER WITH WATER STOP FACE, FLOAT ASSEMBLY, BASKET,LID, ADJUSTABLE COLLAR



Built in conformance with NSF 50, SPS3, UL1081, UL1563 and CAN/CSA-C 22.2



FEATURES

Bonding plate and copper wire connection meet NEC section 680.2 C.

Conforms to UL 1081, UL 1563, CAN/CSA-C22.2

Bonding plate is safely placed behind the skimmer basket, for constant water contact, even when the pump is off

Adjustable collar

New weir clip lock secures the clips in the weir door

Self-contained gunite grip, water stop on face plate to prevent water leaks

Large self-contained basket with lock-in feature (will not float)

Underwater dampers on face plate for noise reduction on weir plate – especially on windy days

Super strong engineered polymer upper housing

Extra heavy duty PVC lower unit (no transitional glue required)

2½" outside slip and 2" inside slip (outside skimmer)

2" threads for pressure testing (inside skimmer)

Built-in overflow or fill line knock out

Upper housing has pre-cut rebar cut outs with pre-drilled holes for tie wire

Additional box inside skimmer box for basket, float assembly and weir plate (so assembly does not get lost on job site)

Skimmer Lid and Collar G154 UV tested

NSF 50 approved for commercial use, 25 GPM min, 55 GPM max – approved for residential use up to 100 GPM

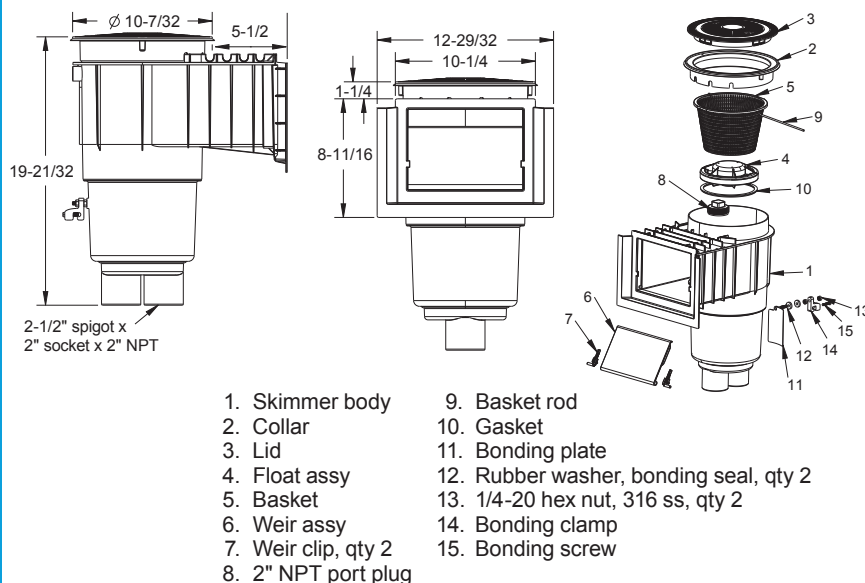
Optional custom name/logo engraved on lid (requires minimum 500 piece lid order)



Part # SKR15xxx

STANDARD COLORS

- ☐ SKR15101 – White
- ☐ SKR15102 – Black
- ☐ SKR15103 – Light Gray
- ☐ SKR15104 – Blue
- ☐ SKR15105 – Dark Gray
- ☐ SKR15108 – Tan



SKIMMER OPTIONS

STANDARD COLORS



101



102



103



104

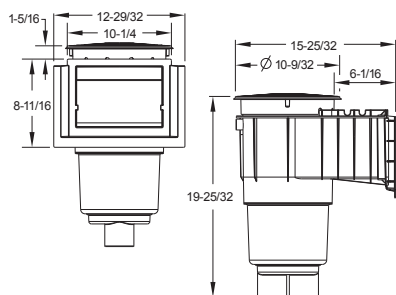


105



108

Standard Waterstop Face Round Lid

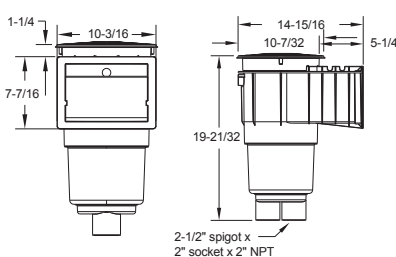


SKR1xx
Standard Skimmer
with Waterstop Face
Dual Bottom Port
2½" Spigot x 2" Socket

SKR1xxD
Single Bottom Port
4" Socket*

SKR1xxF
Single Bottom Port
6" Socket*

Standard Flush Face Round Lid

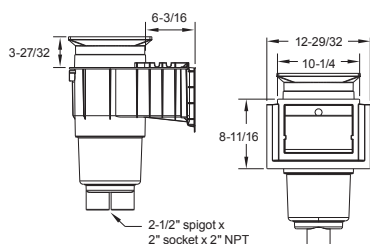


SKR2xx
Standard Skimmer
with Flush Face
Dual Bottom Port
2½" Spigot x 2" Socket

SKR2xxD
Single Bottom Port
4" Socket*

SKR2xxF
Single Bottom Port
6" Socket*

Standard Waterstop Face Square Lid



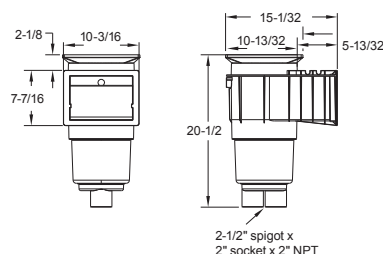
SK64xxx Square Lid and
Collar (sold separately)

SKR1xx
Standard Skimmer
with Waterstop Face
Dual Bottom Port
2½" Spigot x 2" Socket

SKR1xxD
Single Bottom Port
4" Socket*

SKR1xxF
Single Bottom Port
6" Socket*

Standard Flush Face Square Lid



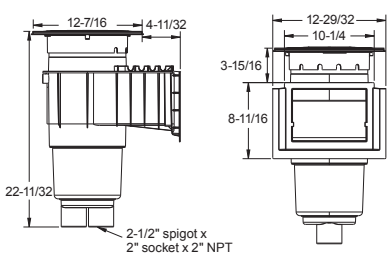
SK64xxx Square Lid and
Collar (sold separately)

SKR2xx
Standard Skimmer
with Flush Face
Dual Bottom Port
2½" Spigot x 2" Socket

SKR2xxD
Single Bottom Port
4" Socket*

SKR2xxF
Single Bottom Port
6" Socket*

Standard Waterstop Face Round/Square Snap-in Lid



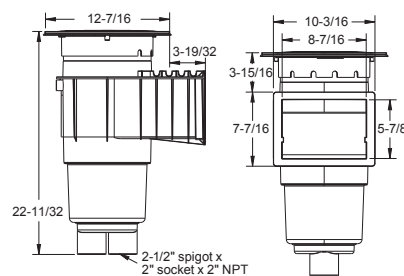
SK65xxx Snap-in
Round/Square Lid and
Collar (sold separately)

SKR1xxx
with Float Assembly
Dual Bottom Port
2½" Spigot x 2" Socket

SKR1xxxD
Single Bottom Port
4" Socket*

SKR1xxxF
Single Bottom Port
6" Socket*

Standard Flush Face Round/Square Snap-in Lid



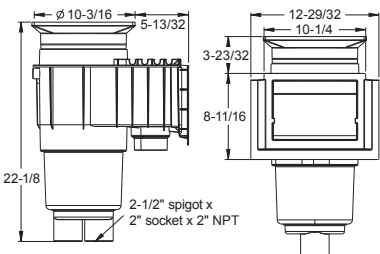
SK65xxx Snap-in
Round/Square Lid and
Collar (sold separately)

SKR2xxx
with Float Assembly
Dual Bottom Port
2½" Spigot x 2" Socket

SKR2xxxD
Single Bottom Port
4" Socket*

SKR2xxxF
Single Bottom Port
6" Socket*

Standard Waterstop Face Round/Square Snap-in Lid



SK65xxx Snap-in
Round/Square Lid and
Collar (sold separately)

SKR1xx-OZ
with Float Assembly
and new Ozone Port
Dual Bottom Port
2½" Spigot x 2" Socket

All AquaStar products are made in the U.S.



Every AquaStar pool product is designed and manufactured in the United States, ensuring the highest quality merchandise. Our entire product line is designed to provide the very best look, feel and performance.

*Includes Pressure Test Plug