

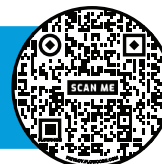
# 8" ROUND MOFLOW® SUCTION OUTLET COVER AND MUD FRAME



**VGBA CERTIFIED  
SPECIFICATIONS**

**Open Area**  
16.6 in<sup>2</sup>

For SOFA Specific Flow Ratings and  
specifications please scan QR code or visit  
[www.aquastarpoolproducts.com/flowcode](http://www.aquastarpoolproducts.com/flowcode)



## FEATURES

Certified, Listed, and Labeled in  
conformance with APSP/ANSI/ICC-16 2017  
and NSF/ANSI/CAN 50 standards

Manufactured from superior  
UV-resistant engineered polymers

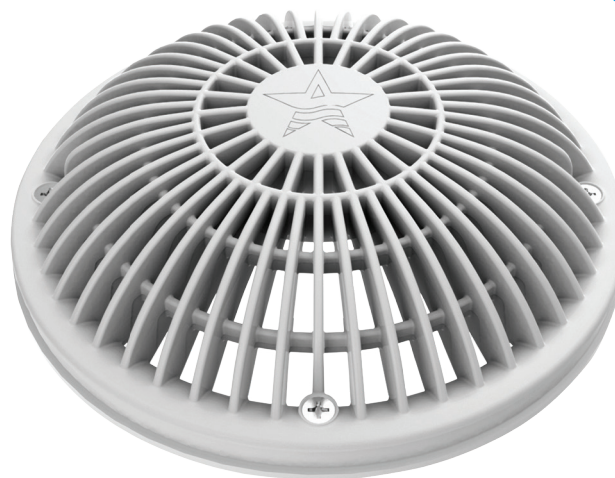
#316 stainless steel screws

Online product support including  
downloadable CAD files, General Certificate  
of Conformity, third-party certificate,  
installation instructions and more

Replace drain cover every five years from  
the date of installation

See next page for additional product  
configurations

36 per case



Part # 8MFxxx

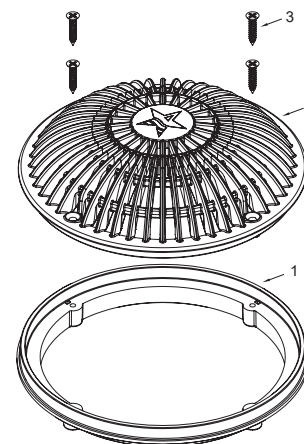
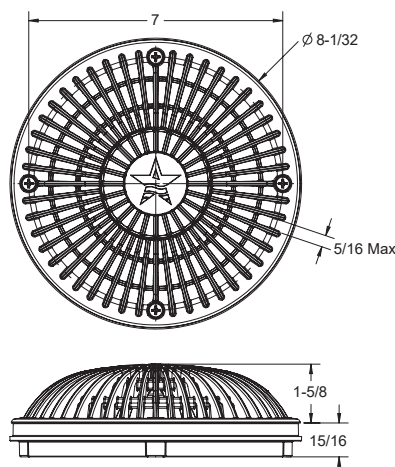
Designed to replace standard 8" round covers  
that have a 7" center-to-center screw hole measurement

## STANDARD COLORS

- ☐ 8MF101 – White
- ☐ 8MF102 – Black
- ☐ 8MF103 – Light Gray
- ☐ 8MF104 – Blue
- ☐ 8MF105 – Dark Gray
- ☐ 8MF108 – Tan

Also available as frame only  
p/n 8FRxxx  
24 per case

**VGBA 2017 Compliant**



1. 8" Round Mud Frame
2. 8" Round MoFlow Suction Outlet Cover
3. 10 x 1" Flat Head Phillips, 316 SS, Qty 4

P 877-768-2717 F 877-276-POOL Outside the US: P +1-949-336-1940 F +1-949-336-1940  
info@aquastarpoolproducts.com www.aquastarpoolproducts.com CS031-011624

## Standard 2" NPT, 2" Socket Extended ABS Sump

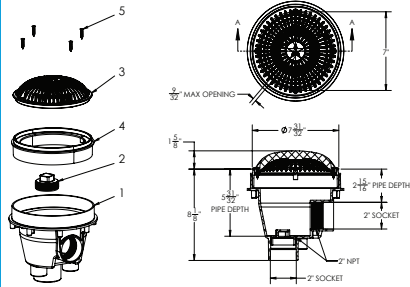
### VGBA CERTIFIED SPECIFICATIONS

For SOFA Specific Flow Ratings and specifications please scan QR code or visit [www.aquastarpoolproducts.com/flowcode](http://www.aquastarpoolproducts.com/flowcode)



Part #  
8MFSBACxxx  
8 per case

Part #  
8MFSBAC2xxx  
Contractor's 2-Pack  
4 per case



1. 8" Sump Bucket For Adjustable Collar
2. 2" NPT Plug
3. 8" Round "MoFlow" Suction Outlet
4. 8" Sump Bucket Adjustable Collar
5. #10 x 1" LG. Flat Head Phillips, Type A Screw, 316 SS, Qty 4

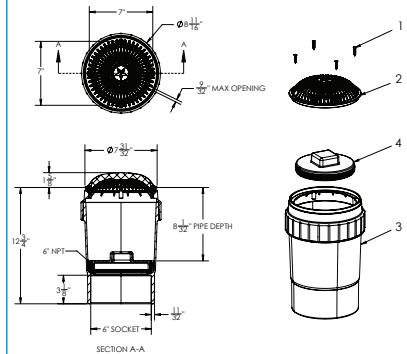
## 6" Socket Deep PVC Sump

### VGBA CERTIFIED SPECIFICATIONS

For SOFA Specific Flow Ratings and specifications please scan QR code or visit [www.aquastarpoolproducts.com/flowcode](http://www.aquastarpoolproducts.com/flowcode)



Part #  
8MFxxxF  
4 per case



1. #10 x 1" Flat Head Phillips, Type A Screw, 316 SS, Qty 4
2. 8" Round MoFlow Suction Outlet
3. 8" Round Double Deep PVC Sump Bucket
4. Plug, 6" NPT

## 3" Socket x 4" Spigot Side Port PVC Sump

NSF

Certified to  
NSF/ANSI/CAN 50  
ANSI/APSP/ICC-16 2017

Open Area  
16.6 in<sup>2</sup>

For SOFA Specific Flow Ratings and specifications please scan QR code or visit [www.aquastarpoolproducts.com/flowcode](http://www.aquastarpoolproducts.com/flowcode)



### Hassle-free pressure testing and winterizing



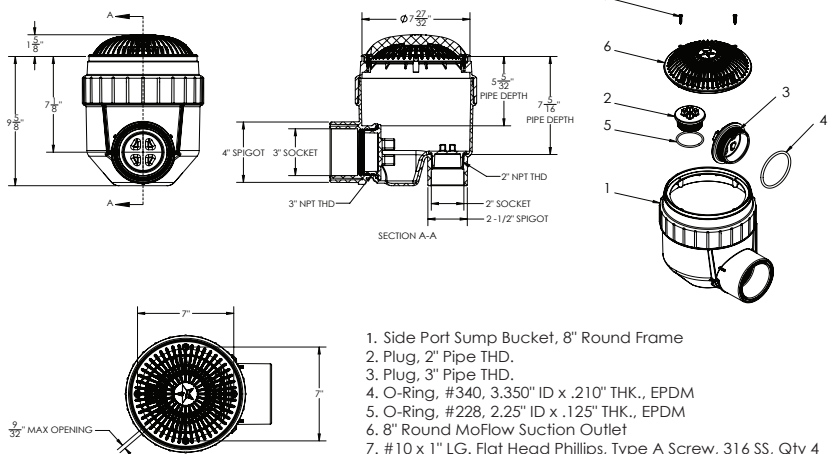
Part #  
8MFxxxSSB  
4 per case

#### Hassle-free pressure testing and winterizing

Comes with a 3" and 2" NPT cap with O-ring. No knock-outs required.  
2" Plug and O-Ring, p/n 25BP101  
3" Plug and O-Ring, p/n 35BP101

NEW

Optional 2" hydrostatic relief valve available p/n HVK101 See page 90



1. Side Port Sump Bucket, 8" Round Frame
2. Plug, 2" Pipe THD.
3. Plug, 3" Pipe THD.
4. O-Ring, #340, 3.350" ID x .210" THK., EPDM
5. O-Ring, #228, 2.25" ID x .125" THK., EPDM
6. 8" Round MoFlow Suction Outlet
7. #10 x 1" LG. Flat Head Phillips, Type A Screw, 316 SS, Qty 4