

## FLUSH-MOUNT RETURN FITTING WITH WATER STOP, EYEBALL AND NUT (FITS INSIDE 2" PIPE)

### FEATURES

Slips inside 2" pipe

Finishes flush, no protrusion past the surface

Integrated water stop to reduce leaks

Eyeball available in four orifice sizes  
(1", 3/4", 1/2", slotted)

Manufactured from engineered polymer  
UV-resistant ABS material

250 per case

Additional orifice size suffix: 3/4"-B, 1/2"-C,  
slotted-D  
(i.e. 3301B = white 3/4" orifice)

Also available in Clear (p/n 3300)



100



Part # 33xx

### STANDARD COLORS



101



104



102



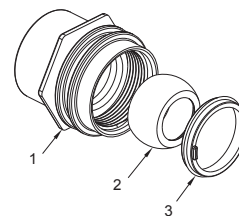
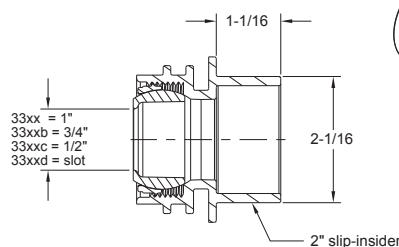
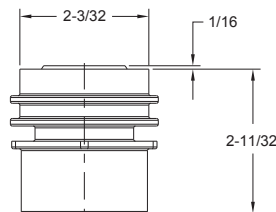
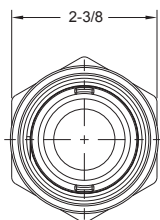
105



103



108



1. Flush mount return body, fits inside 2" pipe
2. Eyeball, 1", 3/4", 1/2", or slotted orifice
3. Locking ring, flush mount