

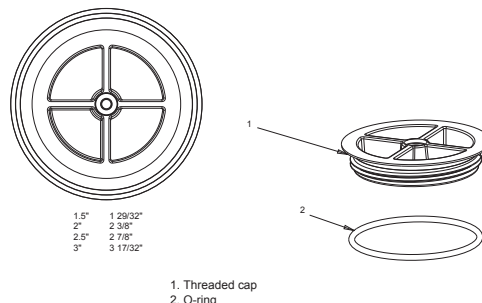
Plaster Cap with Magnet-Finding Metal Insert 1½" / 2"

FEATURES

Threads into 1½" or 2" FPT
Seals off pipes during pool finish to allow for clean threads
Metal insert in cap makes it easy to locate pipes with a magnet after plastering
Available in two sizes (1½", 2")
Manufactured from engineered polymer
UV-resistant ABS material
250 per case
Additional size suffix: 2"-2
(i.e. JMCP109 = 1½" cap JMCP109-2 = 2" cap)



Part # JMCP109



Flush Retrofit Eyeball

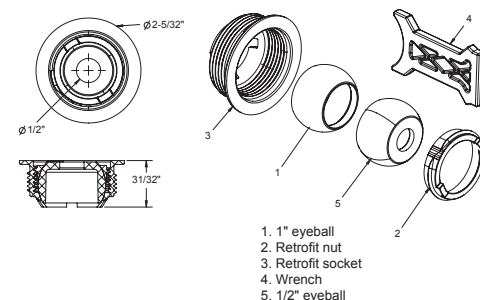
FEATURES

Includes wrench, retrofit nut, retrofit socket, ½" eyeball and 1" eyeball
Fits flush inside 300 series fittings
Changes color of existing fitting
Makes existing old fitting look new
Eliminates the need to chip out the old fitting

NEW



Part # JOxxx



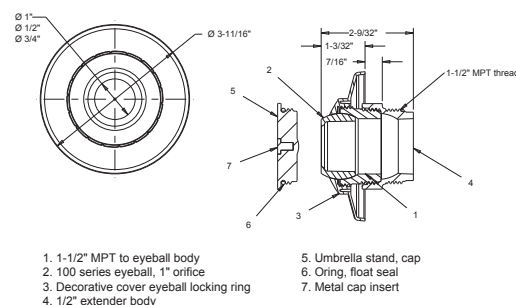
½" Extender with Plaster Cap and Three-Piece Decorative Cover

FEATURES

Screws into 1½" FPT
Removable plaster cap prevents slurry from entering pipes during pool finish, keeps threads clean
Great for old 1022 fitting remodels, adds ½" for new finish
Eliminates the need for costly removal of old fittings (just screw in)
Stack more than one for longer extension
Large flange camouflages pipe and surface construction variations
Eyeball available in four orifice sizes (1", ¾", ½", slotted)
Manufactured from UV-resistant ABS material
125 per case
Add'l orifice size suffix: ¾"-B, ½"-C, slotted-D (i.e. MP101B = ¾" orifice)



Part # MPxxx



Pipe Extenders (1½", 2")

FEATURES

PE15101 slips outside 1½" pipe and inside 1½" pipe for easy in-trench pipe extension
PE20101 slips outside 2" pipe and inside 2" pipe for easy in-trench pipe extension
NSF 50 approved materials
Made from PVC
250 per case



Part # PE20101 – 2",
PE15101 – 1½"

