

FLOW STAR® SKIMMER WITH NARROW 9" DEEP THROAT, FLOAT ASSEMBLY, BASKET, LID, ADJUSTABLE COLLAR FOR VINYL/FIBERGLASS



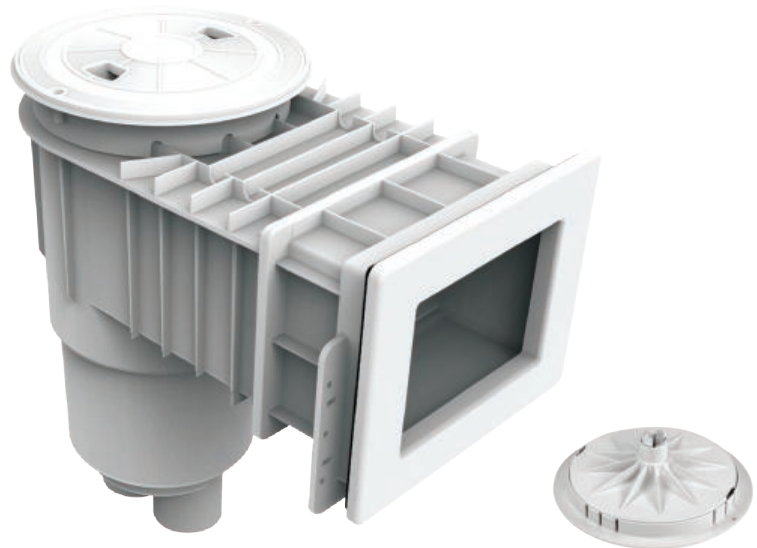
Built in conformance with NSF 50 and SPS 3 standards



FEATURES

Adjustable collar
New weir clip lock secures the clips in the weir door
Weir plate with easy snap in and out locks
Large self-contained basket with lock-in feature (will not float)
Pre-installed O-ring for float assembly
Underwater dampers on face plate for noise reduction on weir plate – especially on windy days
Super strong engineered polymer upper housing
Extra heavy duty PVC lower unit (does not require transitional glue)
2½" outside slip; 2" inside slip (outside skimmer)
2" threads for pressure testing (inside skimmer)
Built-in overflow or fill line knock-out
Upper housing has pre-cut rebar cut outs with pre drilled holes for tie wire
Additional box inside skimmer box for basket, float assembly and weir plate (so assembly does not get lost on job site)
Skimmer Lid and Collar G154 UV tested
Approved for residential use up to 100 GPM
Optional custom name/logo engraved on lid (requires minimum 100 piece lid order)
Designed to work with all existing vinyl liner steel, polymer or fiberglass pool walls
1 per case

Now available with three lid options:
round, square or snap-in round/square



Optional vacuum plate with snap-in lug can be glued in under lid for easy storage p/n SK43101

Part # SKRVFL3Nxxx (vinyl)
Part # SKRFFL3Nxxx (fiberglass)

For additional port configurations, see page 93

STANDARD COLORS

Vinyl

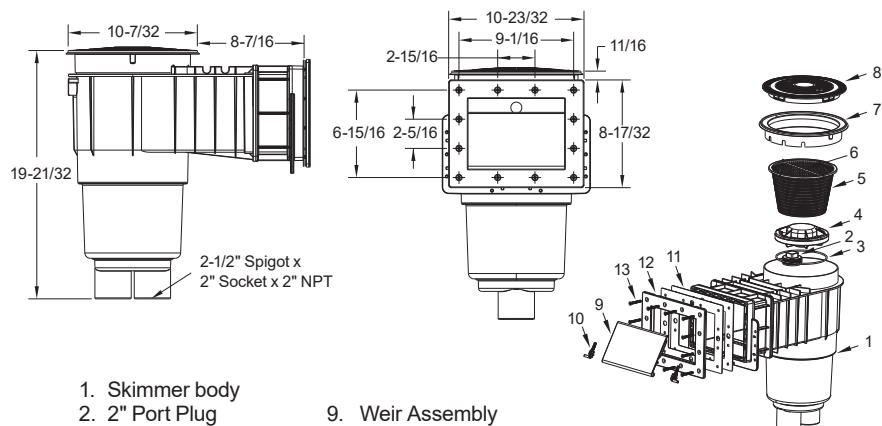
- SKRVFL3N101 – White
- SKRVFL3N102 – Black
- SKRVFL3N103 – Light Gray
- SKRVFL3N104 – Blue
- SKRVFL3N105 – Dark Gray
- SKRVFL3N108 – Tan

Fiberglass

- SKRFFL3N101 – White
- SKRFFL3N102 – Black
- SKRFFL3N103 – Light Gray
- SKRFFL3N104 – Blue
- SKRFFL3N105 – Dark Gray
- SKRFFL3N108 – Tan

Without lid/collar – white only
SKRFFL3NNL01 (fiberglass with float assembly)
SKRVFL3NNL01 (vinyl with float assembly)

SPS 3 & NSF 50 Compliant



1. Skimmer body
2. 2" Port Plug
3. O-Ring
4. Float Assembly
5. Basket
6. Skimmer Basket Rod
7. Collar
8. Lid
9. Weir Assembly
10. Weir Clip, Qty 2
11. Gasket, Extender 9" And 12", Qty 2
12. Face Frame, Extender 9" And 12"
13. 12 x 1-3/4" Flat Head Phillips, 316 SS, Qty 12