

6" Socket Deep PVC Sump

NSF

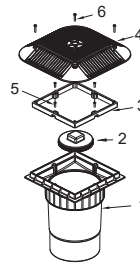
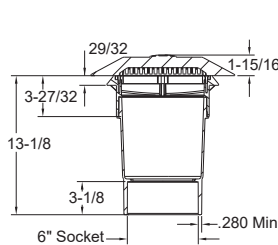
Certified to
NSF/ANSI/CAN 50
ANSI/APSP/ICC-16 2017

Open Area
84 in²

For SOFA Specific Flow Ratings and
specifications please scan QR code or visit
www.aquastarpoolproducts.com/flowcode



Part #
914xxxF
1 per case



1. 6" Socket Deep PVC Sump
2. 6" Tapered Threaded Pipe Plug
3. 9" to 14" Square Adapter
4. 14" Square Anti-Entrapment Cover
5. 10 x 3/4" Flat Head Phillips, 316 SS, Qty 4
6. 10-32 x 1" Pan Head Phillips, 316 SS, Qty 4

3" Socket x 4" Spigot Side Port PVC Sump

NSF

Certified to
NSF/ANSI/CAN 50
ANSI/APSP/ICC-16 2017

Open Area
84 in²

For SOFA Specific Flow Ratings and
specifications please scan QR code or visit
www.aquastarpoolproducts.com/flowcode



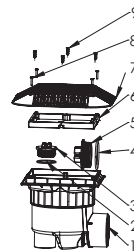
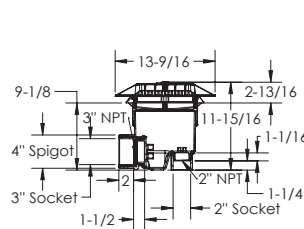
NEW Hassle-free pressure testing and winterizing



Part #
914xxxSB
1 per case

Hassle-free pressure testing and winterizing
Comes with a 3" and 2" NPT cap with O-ring.
No knock-outs required.

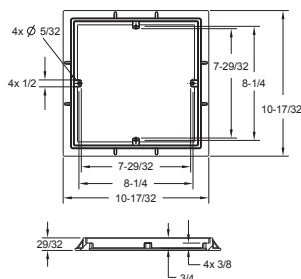
2" Plug and O-Ring, p/n 2SBP101
3" Plug and O-Ring, p/n 3SBP101



1. Side Port Sump Bucket, 9" Square Frame
2. 2" Plug O-Ring
3. 2" NPT Plug
4. 3" Plug O-Ring
5. 3" NPT Plug
6. 9" to 14" Square Adapter
7. 14" Square Anti-Entrapment Cover
8. 10-32 x 1" Pan Head Phillips, 316 SS, Qty 4
9. 10-24 x 1-1/4" Flat Head Phillips 316 SS, Qty 4

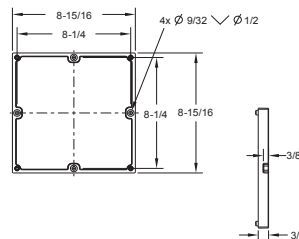
Adapter and Mud Frame Dimensions

Mud Frame



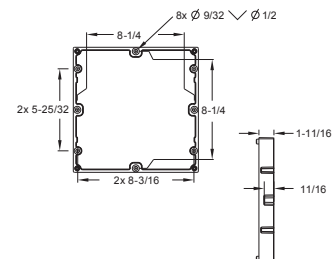
Part # 9FRxxx
20 per case

Retrofit Adapter Frame for 3/4" deep 9" square retrofits



Part # 914FR101
12 per case

Retrofit Adapter Frame for 1" deep 9" square retrofits



Part # R914FR101
12 per case