

Three-Piece Directional Eyeball Fitting 1½" Slip Insider

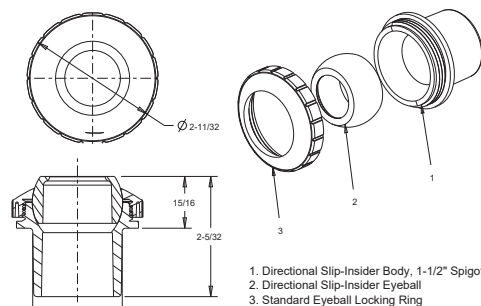
FEATURES

Slips into standard 1½" pipe
Adjustable eyeball available in four orifice sizes (1", ¾", ½", slotted)
Manufactured from engineered polymer
UV-resistant ABS material
250 per case
Orifice size part #'s: 1"-SL81xx, ¾"-SL82xx, ½"-SL83xx, slotted-SL84xx (i.e. SL8201 = white ¾" orifice)
Also available in Clear (p/n SL8100, SL8200, SL8300, SL8400)

00



Part # SL81xx, SL82xx, SL83xx, SL84xx



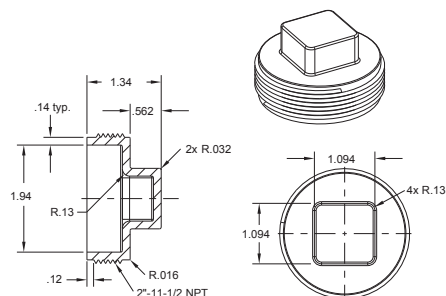
2" Tapered Pipe Thread Plug

FEATURES

Used to winterize pools and pressure test pools
NSF-approved materials
Manufactured from engineered polymer
UV-resistant ABS material
Available in White and Light Gray
FC16102 (T-Wrench) can be used to help install and remove (see page 169)



Part # 8SBP101, 8SBP103



½" Extender with Eyeball and Nut 1½" MPT

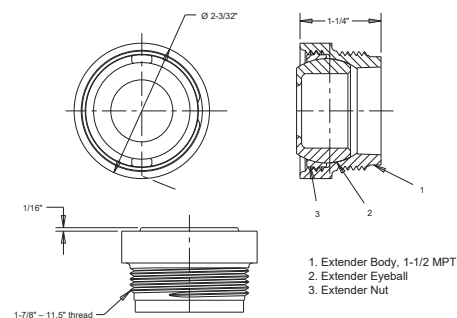
FEATURES

Screws into 1½" FPT
Great for remodels, adds ½" for new finish
Finishes flush, no protrusion past the surface
Eliminates the need for costly removal of old fittings (just screw in)
Stack more than one for longer extension
Eyeball available in four orifice sizes (1", ¾", ½", slotted)
U.S. patent 8,250,682
Manufactured from engineered polymer
UV-resistant ABS material
250 per case
Additional orifice size suffix: ¾"-B, ½"-C, slotted-D (i.e. ASD101B = white ¾" orifice)
Also available in Clear (p/n ASD100)

00



Part # ASDxxx



½" Extended Extender with Eyeball and Nut 1¼" MPT

FEATURES

Threads into 1¼" FPT
Fits into Swimquip/ Sta-Rite #8428 and 8429 (the part with four brass threaded inserts)
Great for remodels, adds ½" for new finish
Finishes flush, no protrusion past the surface
Eliminates the need for costly removal of old fittings (just screw in)
U.S. patent 8,250,682
250 per case
Can be extended by stacking with p/n ASDxxx
Eyeball available in four orifice sizes (1", ¾", ½", slotted)
Engineered polymer
UV-resistant ABS material
Add'l orifice size suffix: ¾"-B, ½"-C slotted-D (i.e. BSASD101B = ¾" white orifice)
Also available in Clear (p/n BSASD100)

00



Part # BSASDxxx

