



PRODUCT DATA SHEET

REGION
EAST COAST

SERIES
STEPLOCK®

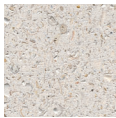
STYLE
SHELLOCK®

The original seashell paver®.

Seashells mixed into the paver and then honed to exposed the beauty of each individual seashell in a sleek smooth surface, creating a very comfortable paver to walk on barefoot. The non-slippery polished surface is smooth and impeccably fashionable.

The Shellock® collection is part of our Steplock® Line, exclusively designed for pedestrian applications.

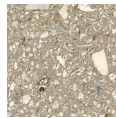
COLOR SELECTION - PAVERS AND COPING



IVORY



TAN



CAFÉ



SILVER SAM

FINISHES



POLISHED

APPLICATIONS



Designed for use in pedestrian applications including patios, swimming pool decks, walkways, stepping stones as well as architectural and decorative uses such as raised walls, fountains, benches and planters.

COPING & SPECIALTY PIECES

NOMINAL SIZES (in). THICKNESS: 1-5/8

One Sided	4x8, 4x12, 4x16, 24x12, 12x12, 16x8, 16x16, 24x24
Two Sided	4x12, 4x16, 24x12, 12x12, 16x16, 24x24
Three Sided	4x16, 12x12, 16x16, 24x24
Four Sided	12x12, 16x16, 24x24
Adjacent	12x12, 16x16, 24x24
Remodeling	4x12 with 3" drop-face, 4" drop-face, 5" drop-face.

PAVER AND PAVING SLABS SIZES & PACKAGING

NOMINAL SIZE (in)	ACTUAL DIMENSIONS (mm)	SQ. FT. PER PALLET	WEIGHT PER PALLET
8 x 8 x 1-5/8*	200 x 200 x 40	160 SQ. FT.	2,870 LBS
8 x 12 x 1-5/8	200 x 300 x 40	160 SQ. FT.	2,870 LBS
12 x 12 x 1-5/8	300 x 300 x 40	180 SQ. FT.	3,255 LBS
12 x 24 x 1-5/8*	300 x 600 x 40	120 SQ. FT.	2,160 LBS
16 x 16 x 1-5/8*	400 x 400 x 40	160 SQ. FT.	2,870 LBS
24 x 24 x 1-5/8	600 x 600 x 40	120 SQ. FT.	2,160 LBS
4 x 8 x 1-5/8 ⁽⁴⁾	200 x 200 x 40	75 SQ. FT.	1,361 LBS

NOTES

1. The Shellock® collection has natural shells embedded at different distances from the surface of the paver or coping, and then polished. Therefore, a small percentage of the shells are expected to come loose from the surface and edges of the tile. This occurrence will diminish over a short span of time and in no way will effect the strength of the products.
2. Pavers should be installed from several pallets at a time to maintain the best color consistency.

STRAIGHT RELAXED-EDGE COPING

NOMINAL SIZES (in). THICKNESS: 1-5/8"

Single Sided	4x12, 12x12, 16x8, 24x12	in Ivory and Tan.
--------------	--------------------------	-------------------

CUSTOM COLORS

Custom colors available typically for minimum quantities of 10,000 square feet.

3. Due to processes required to manufacture, package, deliver, unpack, install and compact the products, small chipping can be expected.
4. The 4x8 border pavers are machine cut and not dimensionally consistent. Artistic Paver Mfg. recommends these pavers should be used strictly as border material, therefore, not recommended for field material.
5. The product images in our catalogs, brochures, or shown on monitor screens give a general indication of color for a preliminary selection. We recommend you also view current product samples and look at actual finished projects before making your final decision.

EAST COAST PLANT

MAIN OFFICE

120 NE 179th St.

North Miami Beach, FL 33162

(305) 653-7283



ARTISTIC PAVER Mfg.
artisticpavers.com

Specializing in unusual sand-set pavers for a distinguished look.

sales@artisticpavers.com

www.artisticpavers.com

WEST COAST PLANT

1508 N V.I.P. Blvd.

Casa Grande, AZ 85222

(520) 426-3479