



BUILT BY



AUSSIE
CHLORINATORS



**TOUGH
RELIABLE
AUSTRALIAN**

This document is written for the XT Chlorinator model produced by Aussie Chlorinators Australia Pty Ltd.

If at any point you or your technician requires further information or assistance with this chlorinator, we recommend talking directly with your local pool specialist, or the vendor you purchased the chlorinator from.

If you have any feedback or comments on the XT chlorinator, we welcome this through email via:
sales@aussiechlorinators.com.au

Aussie Chlorinators Australia Pty Ltd

Proudly Australian Made.

www.aussiechlorinators.com.au

Statement

This appliance is suitable for use by individuals aged 8 years and older, as well as persons with reduced physical, sensory, or mental capabilities, or those lacking experience and knowledge, provided they have received appropriate supervision or instruction on the safe use of the appliance and understand the associated hazards. Children must not play with the appliance. Cleaning and maintenance must not be performed by children without supervision.

The appliance must be permanently connected to fixed wiring in accordance with national wiring regulations. Installation, maintenance, and servicing of this appliance must be carried out by a qualified, licensed electrician. Proper equipotential bonding must also be implemented.

A means of disconnection from the supply mains, with contact separation in all poles, must be incorporated into the fixed wiring to ensure full disconnection under overvoltage category III conditions, as specified by the applicable wiring regulations.

The appliance should be connected through a Residual Current Device (RCD) with a rated residual operating current not exceeding 30mA.

Live parts, except those supplied with safety extra-low voltage (not exceeding 12V), must be inaccessible to anyone in the bath or spa. Electrical components, excluding remote control devices, must be positioned or secured to prevent them from falling into the bath or spa.

If the supply cord becomes damaged, it must be replaced by the manufacturer, their service agent, or a similarly qualified professional to avoid any potential hazards.

Installation

Installation by Qualified Personnel

XT Chlorinators must be installed by a qualified professional, such as a pool retailer, pool service technician, or pool builder.

Positioning the Power Module

Install the chlorinator power module at least **1 meter above ground** and a minimum of **2 meters from the pool edge**.

Mount the stainless steel bracket onto a solid structure using the screws provided.

Secure the power module by fitting it over the two raised pins on the bracket and locking it in place with the two provided locking clips.

Protection for Extended Life

To ensure the chlorinator's longevity, protect the power module and cell housing from direct sunlight and rain wherever possible.

Electrical Connections

Plug the chlorinator power pack into a **RCD-protected 240V mains outlet** with a 10A rating.

Connect the **cell cable connector** to the designated connector located on the bottom of the power pack.

Plug the pump's mains cable into the **pump outlet** on the bottom of the chlorinator power pack.

Installation

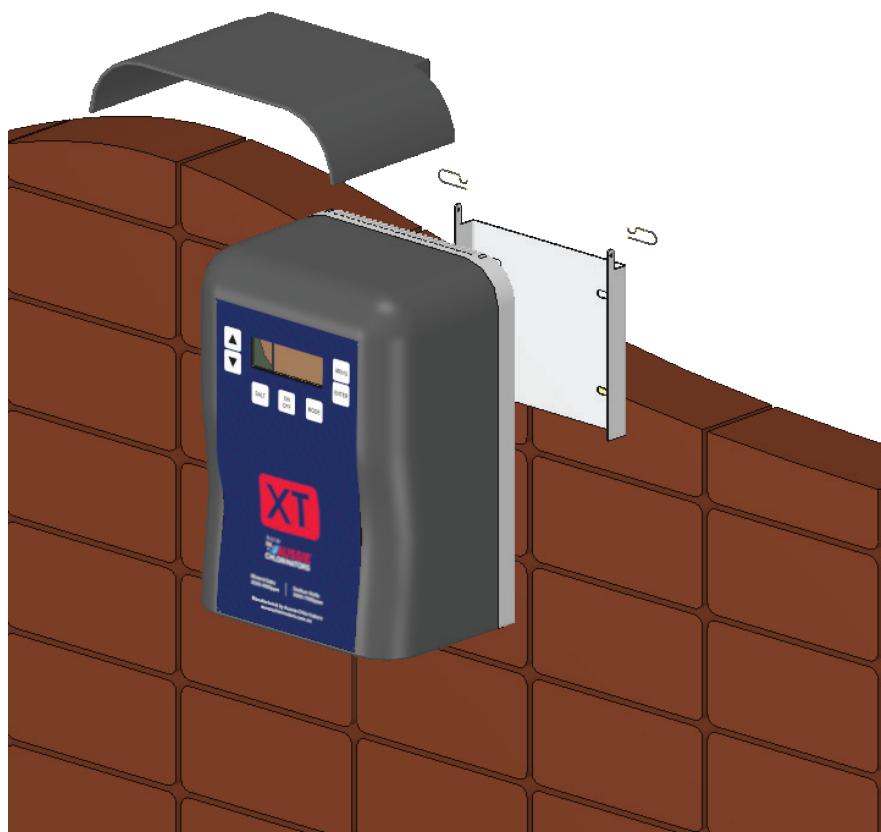


Diagram of correct installation.

Plumbing

Plumbing Guidelines for Installation

Plumbing should be carried out by a qualified plumber or a pool industry service technician whenever possible. However, it can be performed by a home handyman, provided care and attention are exercised.

Warning: Do not apply priming fluid to the clear cell housing.

1. Pipe Preparation and Connection

- All pipework should be primed with an appropriate priming fluid prior to applying PVC glue.
- Use a high-pressure PVC glue, ensuring both surfaces are thoroughly coated before connecting.
- Once joined, work quickly as the glue will bond within a few seconds.

2. Pipe Orientation

- The piping from the filter to the chlorinator cell must enter the **pipe connection closest to the cell head**, as illustrated in the diagram below. This is where the water-sensing probe has been pre-installed during manufacturing.

3. Special Consideration for Variable Speed Pumps

- When plumbing from the opposite direction and using variable speed pumps operating at very low flow rates, the water-sensing probe may not be fully covered. This can cause the chlorinator to display a **priming cell** message.

Plumbing

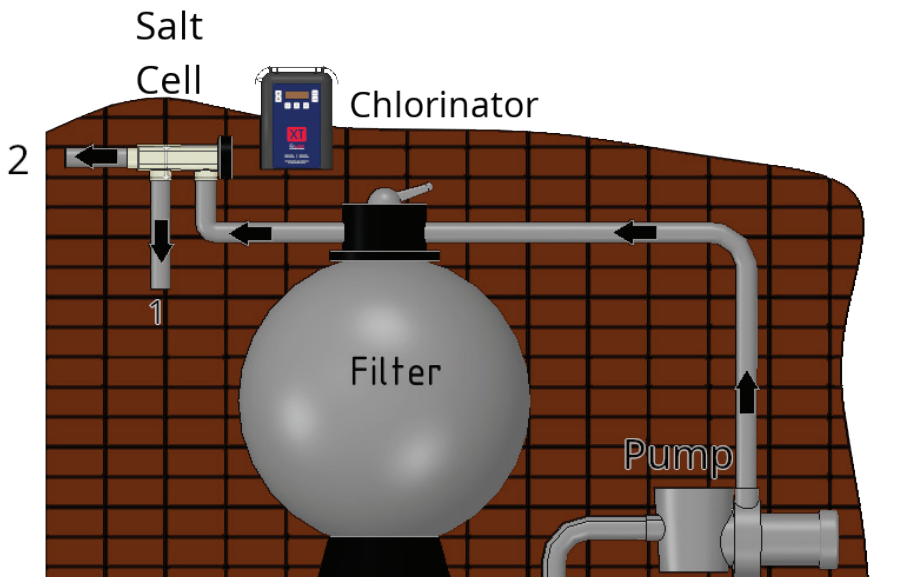


Diagram of plumbing installation.
Optional Return To Pool using outlet 1 or 2.

Controls



Toggles the chlorinator OFF then back ON when connected to the mains power.



Press to enter or exit the main menu or to exit sub menus.



Press to enter a selected menu or confirm a setting.



Selects different modes of operation.

Press to select

ON

TIMER

SUPERCHLORINATE

BOOST

SPA

BACKWASH



Will turn the pump ON and measure your salt or mineral.



Increase button is used to navigate menus, modify settings or increase the chlorine output.



Decrease button is used to navigate menus, modify settings or decrease the chlorine output.

Menu

Pressing the MENU button will take you into the main menu list, by using the up/down arrows you can scroll through the list, then press the enter button to enter the function you wish to modify, pressing the MENU button again will exit you from the sub menu.

SUB MENU

CLOCK

Use the up/down buttons to enter the time of day (0-24hrs)

CHLORINE OUTPUT

Use the up/down buttons to set the chlorine output, this can also be performed from the working screen as the chlorinator is functioning.

TIMER

Use the up/down buttons to move the cursor above or below each block where you would like the chlorinator & pump, or pump only to operate, then by pressing the enter button you can toggle between:

No operation

'C' Chlorinator & Pump operation

'P' Pump only operation

PUMP PROTECTION

Use the up/down buttons to set between 3-10 minutes or you can set this function OFF. Pump protection is activated when there's no water flowing across the cell/electrode.

CELL CLEANING

Use the up/down buttons to change the time between cell reversals, a shorter time will remove more calcium for pools that have high levels, set for a longer time for pools that don't have calcium issue's (long reversal times will extend cell life).

BRIGHTNESS

If your screen is too bright for the area installed you can dim the backlight with the up/down buttons.

Menu

SYSTEM INFO

Total Hrs = Hours the power module has operated.

Cell Hrs = Hours the cell has operated.

Polarity = What direction the electrical current is flowing.

Unit size = What size your chlorinator is.

SW Version = Software version.



MODE

Pressing the MODE button will toggle you through the different operational modes the chlorinator can be set too.

These MODES are:

ON

Sets the chlorinator and pump to operate 24/7

TIMER

Sets the chlorinator and pump or pump only to operate at the timer blocks that have been set.

SUPERCHLORINATE

Sets the chlorinator and pump to operate @100% for 24hrs only, then will automatically revert back to TIMER mode.

BOOST

Sets the chlorinator and pump to operate for 6hrs then will automatically revert back to TIMER mode.

SPA

Sets the chlorinator to operate @ 10% output and pump on.

NOTE: This mode will operate 24/7 until you manually set the chlorinator mode back to TIMER.

BACKWASH

Backwash is explained overleaf in the Backwash section.

Backwash

The Backwash function has been added to simplify how the pump is operated as you adjust the Filter Lever into its different positions during a backwash.

NOTE: NEVER OPERATE THE FILTER LEVER WHILE THE PUMP IS OPERATING.

WARNING: THE PUMP WILL START & STOP AUTOMATICALLY

Enter the BACKWASH function by pressing the MODE button until BACKWASH is displayed.

The screen will now display.....SET VALVE TO BACKWASH AND PRESS ENTER.....rotate the filter valve to backwash, pressing enter will start the pump and you will see dirty water exit the waste pipe and in the clear glass installed on your filter.

The screen will now display.....PRESS ENTER TO FINISH BACKWASH.....press enter once the water in the waste pipe has become clear, this will stop the pump so you can rotate the filter valve.

The screen will now display.....SET VALVE TO RINSE AND PRESS ENTER.....rotate the filter valve to RINSE, pressing enter will start the pump, once water is flowing allow the pump to operate for at least 30 seconds or as per the filter manufacturers recommendations to clean the last contaminates from the filter.

The screen will now display.....PRESS ENTER TO FINISH RINSE CYCLE.....press enter.

The screen will now display.....SET VALVE TO FILTER AND PRESS ENTER.....press enter.

The backwash is now complete and the chlorinator will automatically revert back to the TIMER mode.

Salt

Recommended Salt Concentration

For Sodium Chloride Salts 3500 - 7000ppm.

For Mineral/Magnesium Chloride Salts 3500 - 4000ppm.

Salt Measurement Instructions

1. Starting the Salt Measurement

- Press the **SALT** button to initiate the salt measurement process.
- The chlorinator will automatically start the pump to ensure sufficient water flow through the cell, which is necessary for an accurate measurement. This also allows the water temperature to be recorded, as it is a critical factor in the calculation.

2. Stabilizing Water Temperature

- Allow the water temperature at the cell to stabilize for **at least 15 minutes** before taking a measurement.

3. Measurement Process

- The salt measurement takes approximately **30 seconds** and displays the result in PPM (parts per million).
- The result will continue to update every few seconds for a duration of **1 minute**. Afterward, the chlorinator will automatically revert to its previous mode.
- To cancel the salt test at any time, press the **SALT** button again.

4. Measurement Limitations

- Salt levels **below 2000 PPM** cannot be measured by the chlorinator.
- Salt levels **above 8000 PPM** may produce less accurate results.

Important Note:

The salt measurement provided by the chlorinator is intended as a **general guide only**, as several factors can influence the accuracy of the reading. For more precise measurements, it is recommended to:

- Take a water sample to your local pool shop for analysis, or
- Have the test performed by a qualified pool service technician.

Water quality

Your water **BALANCE** should be kept within the following levels for trouble free operation.

pH - Measurement Interval - once a week
pH level should be between 7.2 - 7.6 Controlling your pH is most important so that you have good active levels of chlorine throughout the water, high pH above 8.0 will reduce how active the chlorine is.

When pH is high, adding Hydrochloric Acid will lower the pH.

When pH is low, adding Sodium Bicarbonate will raise the pH.

Stabiliser

Measurement Interval - 1-2 times per year
Stabiliser level should be kept between 30 - 50ppm, levels higher than this aren't required.
Stabiliser should be measured by your pool shop 1 - 2 times per year but most importantly in summer when the UV levels are highest.

Chlorine

Measurement Interval - once a week
Chlorine (Free Chlorine) should be measured once a week and kept between 2 - 3ppm for good disinfection. Adjust the chlorinator output percentage or pump run time to either increase or decrease this level as required.

Total Alkalinity

Measurement Interval - once a month
80 - 150ppm

Calcium Hardness

Measurement Interval - once a year
150 - 250ppm

Trouble shooting

PROBLEM	CAUSE	REMEDY
Priming Cell	Requires water across the CELL to complete the circuit before the chlorinator will display OK and start chlorination	Make sure the pump is primed with water and operating correctly. Make sure any valves are in the open position and water is flowing through the CELL
Chlorine output will not reach 100%	Salt Level is not high enough	Salt level should be as per recommendations
	Water temperature is low	Winter water temperatures can get very low. For every 1C below 28C the chlorinator output can drop by 2%
	Cell has too much calcium deposit on plates	Clean the cell in a 1/9 ratio of Hydrochloric Acid & water or a cleaning solution available from any pool store
	Cell could be at end of life.	If the salt conditions are correct and the cell won't achieve its full output you may require a new cell.

Please turn over for more detail.

Trouble shooting

PROBLEM	CAUSE	REMEDY
Cell Life	How long will my cell last.	Clean the cell in a 1/9 ratio of Hydrochloric Acid & water or a cleaning solution available from any pool store
No Chlorine measured in the water.	pH is far too high.	Add Hydrochloric acid to reduce the pH between 7.2 - 7.6.
	No stabiliser in the water.	Add stabiliser until you have 30-50ppm.
	Chlorinator isn't operating long enough or at a high enough output.	Increase operating hours or percentage output.
Calcium buildup on cell is high.	Cell cleaning time is set too high.	Enter the cell cleaning function in the menu and reduce the time between cleaning cycles.
Salt measurement is not correct.	Too much calcium or contaminant on the cell when measuring.	Clean the cell in a 1/9 ratio of Hydrochloric Acid & water or a cleaning solution available from any pool store

Please turn over for more detail.

Trouble shooting

PROBLEM	CAUSE	REMEDY
Salt measurement accuracy		Approx 10% accuracy is all that we can achieve without going to very expensive probes and solutions for calibration
My pump is always ON	The pump may have been connected to the mains before the chlorinator. The chlorinator is in the ON or SPA mode and will operate 24/7	Make sure the pump is plugged into the 240V socket on the chlorinator. Make sure the chlorinator MODE is set to TIMER.
My display doesn't show the temperature	Dirty connection	Remove the multi-way cell connector from the chlorinator and apply some INOX, WD40 or Vaseline to the contacts attached to the cable and re-install several times to help clean the contacts.

Please turn over for more detail.

Trouble shooting

PROBLEM	CAUSE	REMEDY
Water/Condensation on screen	Small amounts of moisture can sometimes be absorbed during the manufacturing process on the inner surface of the plastic enclosure.	Allow to operate and the moisture will be expelled from the chlorinator, normally within 24 - 48hrs.
Low Salt	Salt has dropped below 3500ppm	Have a sample of your pool water tested by your local pool store or service agent before adding salt.
	Contaminates coating cell plates	Clean the cell in a 1/9 ratio of Hydrochloric Acid & water or a cleaning solution available from any pool store.
High Salt	Salt level is above 7000ppm.	Backwash water from the pool and re-fill to reduce the salt level below 7000ppm.
Chlorinator won't go above 80% and displays high salt.	The chlorinator has a protection feature that will limit your output to 80% when your salt level gets too far above 7000ppm.	Discharge water from the pool and re-fill to reduce the salt level to 7000ppm or below.

Please turn over for more detail.

Trouble shooting

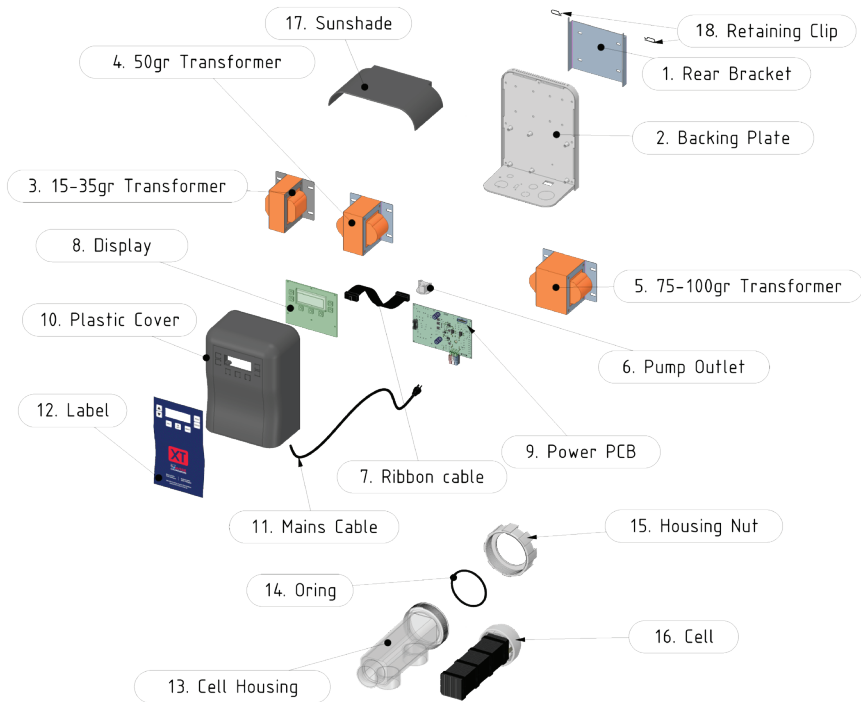
PROBLEM	CAUSE	REMEDY
Error Code 'Terr' (Temperature Error)	Multi way connector dirty or loose connection.	Disconnect and reconnect multi way plug under power pack.
No flow / pump fail	No water present at cell sensor.	Check pump can supply pool water.
	Chlorinator shows Status: Priming Cell. After 3 minutes or however long the pump protection is set to, it will then show Status: No Flow. Either the 6way connector is not plugged in or the pump is not running.	Pump fail will lock the pump out for 30min or until you switch the mode or turn the unit off/on at the wall.
No flow / Pump fail	When activated the pump is locked out for 30min.	To bypass select another Mode or reset power at 240V wall switchCheck pump operation.
Pump stopping intermittently	Faulty pump, overheating or debris around pump impeller.	Clean debris from impeller.

Specification table

Model No.	XT15	XT20	XT25	XT30	XT35	XT50	XT75	XT100
VOLTAGE AC INPUT	240	240	240	240	240	240	240	240
AMPS AC INPUT	0.5A	0.6A	0.7A	1.0A	1.1A	1.35A	1.5A	1.95A
VOLTAGE DC OUT	8V	8V	8V	8V	8V	11V	12V	16V
AMPS DC OUT	8.5A	11A	13.5A	15.7A	18.5A	17A	17.5A	18A
CHLORINE GRAMS/HR	15	20	25	30	35	50	75	100
POWER (WATTS)	86	124	140	153	185	265	360	433
(Hz)	50/60	50/60	50/60	50/60	50/60	50/60	50/60	50/60
WEIGHT (KG)	8.6	9.5	9.8	10.2	10.5	11.5	12.5	13.5
DIMENSION (CM)	30H 22W 15D	30H 22W 15D	30H 22W 15D	30H 22W 15D	30H 22W 15D	30H 22W 15D	30H 22W 15D	30H 22W 15D

Pump Outlet Maximum Rating for all Model sizes is 1.5Kw (2HP).

Specification table



Part No	Description	Part No	Description
1.	Rear Bracket	10.	Plastic Cover
2.	Backing Plate	11.	Mains Cable
3.	15-35gr Transformer	12.	Label
4.	50gr Transformer	13.	Cell Housing
5.	75-100gr Transformer	14.	O-ring
6.	Pump Outlet	15.	Housing Nut
7.	Ribbon Cable	16.	Cell
8.	Display	17.	Sunshade
9.	Power PCB	18.	Retaining Clips

Frequently asked questions

For more detailed answers to any questions you may have regarding the XT chlorinator, please visit our website, or simply scan the below QR code and view our FAQ online.



About Us

At Aussie Chlorinators, we're committed to engineering excellence, delivering the most reliable and long-lasting salt water chlorinators to Australia.

For our distributors and pool builders, we promise no-fuss, easy-to-use solutions that stand the test of time. For our end users, we ensure peace of mind with unparalleled after-sales service and a robust warranty.

Upheld by our core values of quality design, the highest integrity, and a dedication to great engineering, we strive to redefine pool care standards and customer satisfaction.

Aussie Chlorinators Australia Pty Ltd.
Proudly Australian Made.
www.aussiechlorinators.com.au



BUILT BY
 **AUSSIE**
CHLORINATORS



**TOUGH
RELIABLE
AUSTRALIAN**