

AQUASMART CC5+TC

CLEANER BOOST PUMP CONTROLLER

Instruction Manual



DESCRIPTION

The Aquasmart CC5+TC controller will operate a pool cleaner booster pump for a set period of time whenever constant water flow is detected for more than 10 seconds.

INSTALLATION INSTRUCTIONS

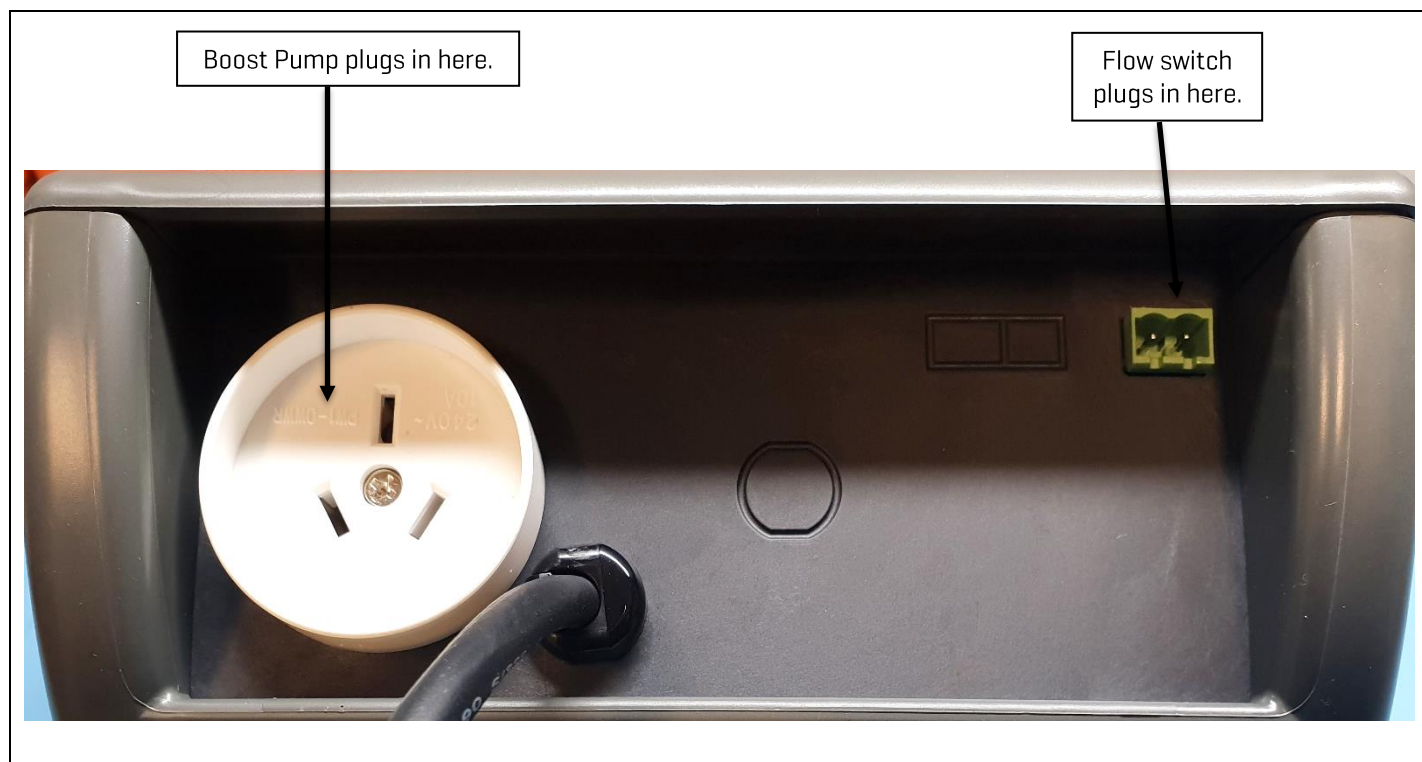
THIS APPLIANCE IS NOT INTENDED FOR USE BY YOUNG CHILDREN OR INFIRM PERSONS WITHOUT SUPERVISION. PLEASE ENSURE THAT YOUNG CHILDREN ARE SUPERVISED TO ENSURE THAT THEY DO NOT PLAY WITH THE APPLIANCE.



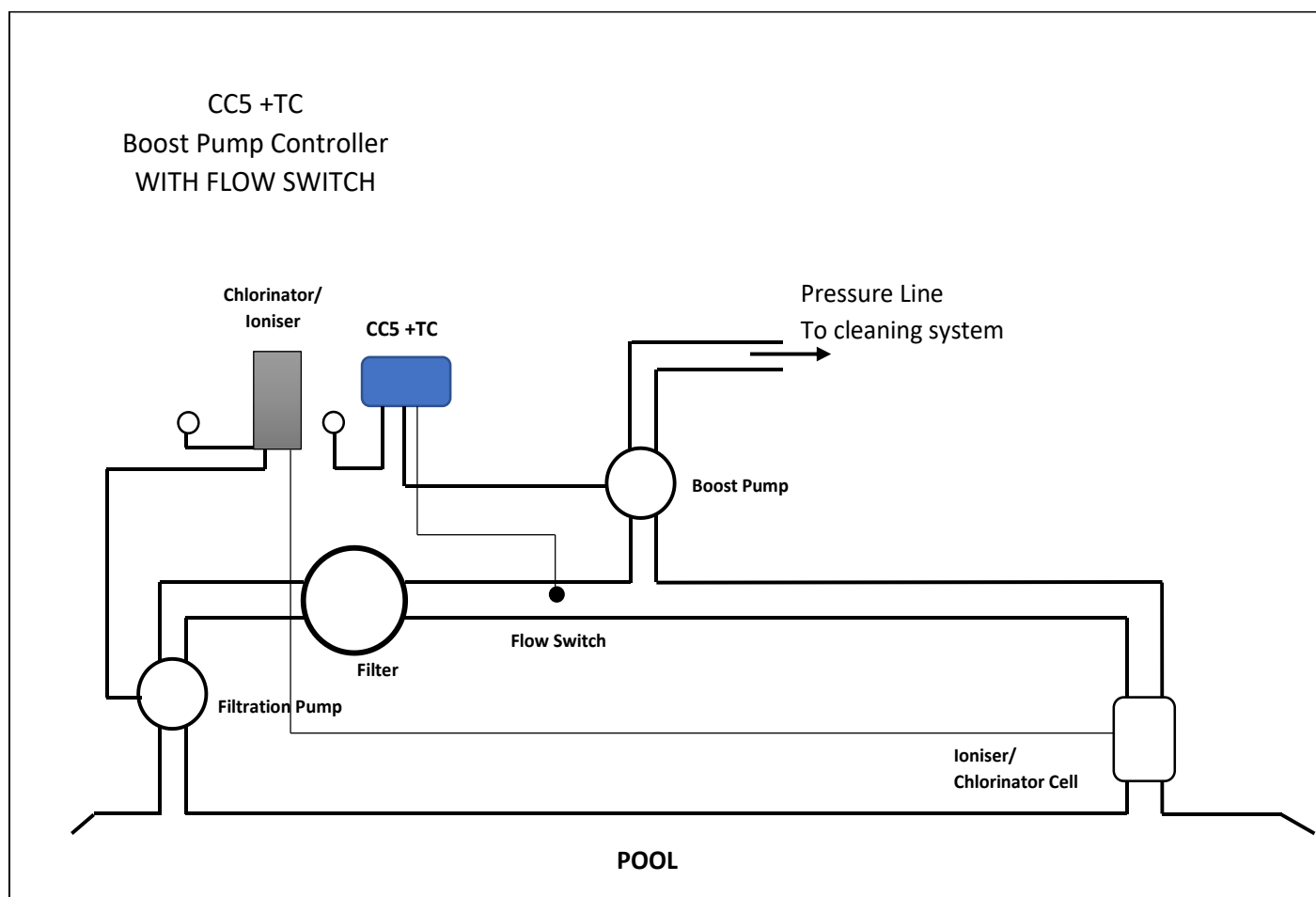
Ideally, as with all pool equipment, the controller should be installed out of direct weather.

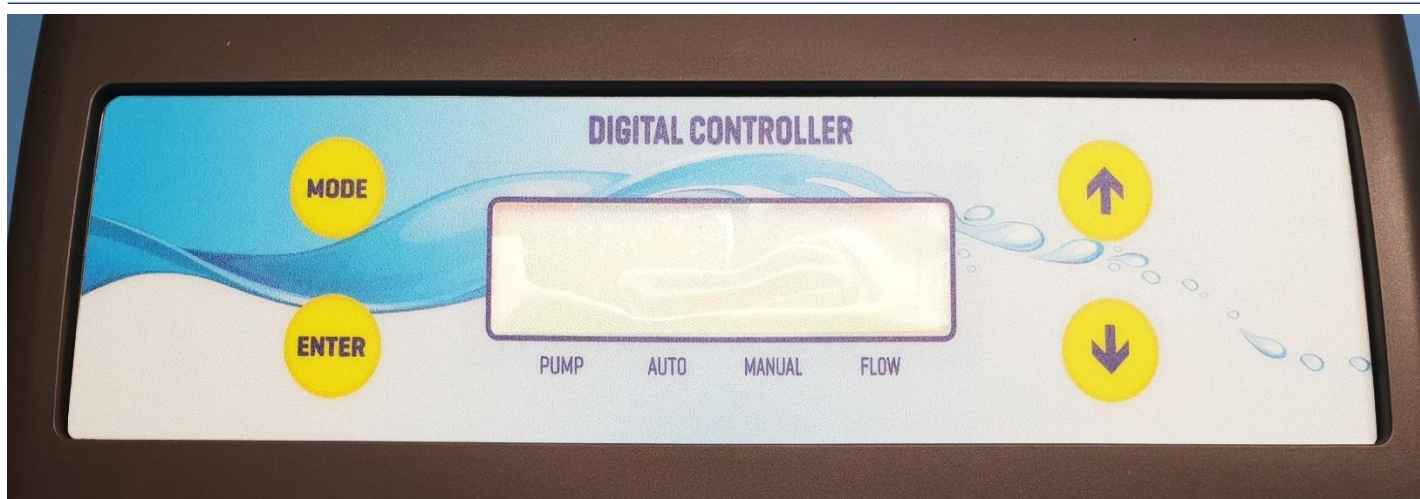
CONTROLLER MOUNTING	<p>Find a suitable location to mount the control box.</p> <p>The controller should be no closer than 3 metres from the water's edge and a minimum 600mm above ground.</p> <p>The power cable is 1.8m long and should be plugged directly into a general power outlet, not into an extension lead.</p> <p>Fix the mounting bracket to a solid structure with the screw and wall plug kit provided. Slide the controller on, locking it into place. Adjust the screws on the back of unit to ensure a snug fit.</p> <p>To remove unit, lift and gently pull away from structure.</p>
FLOW SWITCH	<p>The Flow Switch should be fitted straight after the filter and before the boost pump take off Tee.</p> <p>It must be installed with the flow arrow on the side of the switch facing the correct water flow direction in a horizontal position or if a vertical position is to be used, the water must flow upwards.</p> <p>The flow switch is plugged into the green plug socket beneath the controller. This will ensure that the pump only activates when the main pool pump is operating.</p>
BOOST PUMP	<p>The boost pump plugs into the 240V outlet beneath the CC5+TC controller (marked PUMP on the controller face plate).</p> <p>Maximum rated output load for the 240V socket is either, 9.98Amps / 2395 Watts, or, 14.95Amps / 3590 Watts. Please refer to the unit's rating label.</p>

BASE DIAGRAM



PLUMBING CONFIGURATION





OPERATING INSTRUCTIONS

LCD SCREEN	The LCD screen displays the pump on status, on/off/locked-out status and the time of day & date [clock].
LCD INDICATORS	There are arrow icons on the LCD screen that indicate what actions the controller should currently be doing. These arrows point to text on the label.
MODE BUTTON	<p>Pressing this button changes to the next mode of operation. Once the mode button is no longer being pressed then the selected mode of operation is automatically saved.</p> <ul style="list-style-type: none"> • AUTO RUN – In this mode, the unit waits for water flow from the filtration pump to start. Once flow is detected for a constant 10 seconds it will switch on the booster pump for the time set using the SET RUN option. If a different once only run time is required, press the UP or DOWN buttons while in AUTO RUN to adjust the run time in half hour [30 minute] intervals. This will alter the current time [if running] or the next run time of the pump and will then revert to the previously stored run time once the filtration pump [flow] stops. If the run time has expired, the LCD screen will display 'FINISHED' until the flow stops or until the clock is outside of the run time[s]. • MAN. OFF – Manual OFF turns the pump OFF and prevents it from starting. Note that the controller defaults to AUTO RUN when first powered on. • MAN. ON – Manual ON turns the pump ON, but only if flow is present. If there is no flow or if flow stops, the controller returns to AUTO RUN [automatic mode]. <p>**The factory default MODE is AUTO RUN.</p>
ENTER BUTTON	<p>Pressing the ENTER button will turn on the LCD backlight. Pressing the ENTER button while the backlight is lit will enter the SETTINGS MENU.</p> <p>The following will be displayed:</p> <p>1) EXIT, the menu system can be navigated using the ↑ or ↓ buttons. All selectable and changeable values will flash on the LCD screen. Press the ENTER button to accept the currently displayed [flashing] item.</p>

All menu items are shown below:

- 1) EXIT
- 2) CLOCK
- 3) PERIOD
- 4) SYSTEM

1) EXIT	Will save changes and return to automatic operation.
2) CLOCK	<p>Set Clock: This allows you to operate the boost pump based on the time of day. When set to OFF, the boost pump will operate whenever flow is detected. When set to ON, you will be prompted to set the current time of day followed by the number of times per day the unit is allowed to run the boost pump [CYCLES]. You will then be prompted to set the allowable run times[s].</p> <p>**Default is non-time clock mode CLK=OFF.</p> <p>Note: 'Set Run Time' applies to each cycle and if the 'Set Run Time' is greater than the cycle time then the cycle time will stop the boost pump prematurely.</p>
3) PERIOD	<p>Set Run Time: To set the default run time, press the ENTER button when PERIOD is displayed. You can then use the UP and DOWN buttons to adjust the run time in half hour [30 minute] intervals. The range is from 0.00 hours [disabled] to 5.00 hours. Once you have selected the required run time, press ENTER to save & start AUTO RUN operation. [*Default = 2 hours].</p>
3) SYSTEM	<p>EXIT - Press ENTER on this menu to return to automatic operation.</p> <p>LCD TIME - Adjust the number of seconds the backlight remains on after the time a button was pressed. [Select NONE for always on.]</p> <p>DEFAULT - Restore the controller back to factory defaults.</p>

<p>NOTES:</p>	<ol style="list-style-type: none"> 1. If any of the menu items are left unattended for 3 minutes, the menu will time out and automatically save all settings and return to automatic operation. 2. If a sensor fault is detected, the controller displays which sensor and what the fault is. 3. Should power be interrupted for any reason, the controller will resume normal operation when power is restored. All information will have been kept for up to 10 days. 4. MAX combined rated output load for the 240V socket[s] is 9.98 Amps / 2395 Watts or, 14.95Amps / 3590 Watts. Please refer to the unit's rating label. 5. Degree of protection against moisture: IP33. 6. Store pool chemicals safely, at least 3 metres away from all pool equipment.
----------------------	--

WARRANTY

- This range of product is covered by a limited 3 year warranty against component failure or faulty workmanship from the date of installation.
- Faulty units should be returned in the first instance to the dealer from which the unit was purchased. [Return to Base]
- Damage to the unit due to misuse, power surges, corrosion from pool chemical fumes, lightning strikes and or installation that is not in accordance with the manufacturer's instruction may void the warranty.
- Warranty does not include on-site labour or travel costs to or from installation site.
- Flow Switches are covered by a 12 month warranty at the discretion of their manufacturer.

If the power cord is damaged, do not use the controller. Return the unit to the supplier for repair.

CUSTOMER RECORD (To be retained by the customer)

DEALER/INSTALLER NAME

SERIAL NUMBER

DATE INSTALLED

For service assistance visit www.dontek.com.au

Dontek Electronics Pty Ltd

PO Box 239, Bayswater VIC 3153 Australia

Phone: +613 9762 8800 Email: sales@dontek.com.au



TROUBLE SHOOTING

NO POWER TO THE DISPLAY:

Power point is faulty. Test power point with a known working appliance. If the power point is operational, check the controller in another power point and if there is still no display then send the controller for repair.

RTC-FAIL – This can occur if the unit has been turned off for a prolonged period of time. Leave the unit on for ~30 seconds, then turn it off for ~30 seconds before turning it back on.

PUMP FAULTS:

Ensure the controller has a working flow switch, otherwise the pump will not operate.

BOOST PUMP WILL NOT START:

The pump will only ever run during the set filtration times.

Check the Set Run Time to ensure that it isn't set to 0.

If the controller is showing a "No Flow" error message, check to ensure the chlorinator and filtration pump are running. If a "No flow" error message is displayed and the filtration pump is running, there may be an issue with the flow switch. This can be checked by unscrewing the flow switch wires and using a loop of wire in the flow switch plug at the base of the controller.

If the pump does not operate then plug the pump into a power point and test operation. If the pump is OK then the controller requires repair.

PUMP WILL NOT STOP:

Turn off power to the controller and ensure the pump stops. If the pump continues to operate then unplug it from the power point and connect it to the 240Vac socket marked PUMP at the bottom of the controller.

FACTORY RESET:

Hold down ENTER when power is off, hold down after powering up, releasing after 5 seconds.

Dontek Electronics Pty Ltd

PO Box 239, Bayswater VIC 3153 Australia

Phone: +613 9762 8800 Email: sales@dontek.com.au

