

# ARG

## Pool and Spa Products

### 2025 Catalog



Advanced Recreational Goods, Inc. 1406 Commerce Dr., Stockbridge, GA 30281  
PH (678) 837-7479 [www.argpool.com](http://www.argpool.com) [cs@argpool.com](mailto:cs@argpool.com)



# Water Features

## White Goods

## Replacement Parts

Customer Service, Tech Support, Sales and Accounting : [CS@ARGPOOL.COM](mailto:CS@ARGPOOL.COM)

Instructions, Videos, and the Latest Information : [www.argpool.com](http://www.argpool.com)

**We are the manufacturer and do not sell to the public. To purchase our product, please visit your local pool retailer.**

Merchandise will not be accepted for return without a Returned Goods Authorization (RGA) number issued by Advanced Recreational Goods, which should be marked on all returned cartons. Returned shipments not having prior authorization will be refused. All returned merchandise must be new and unused with the exception of defective goods. A 25% restocking charge will be applied against any credit issued for salable merchandise. All goods must be returned freight pre-paid within 30 days after receipt of shipment.

#### ARG Limited Warranty

ARG warrants its products to be free of defects in material and workmanship for a period of one (1) year from the date of original purchase of the ARG product unless otherwise noted.

#### This Limited Warranty DOES NOT cover:

- Costs incurred in the shipment of cartage, removal and/or reinstallation (including but not limited to labor costs) with respect to the replacement product made available by Advanced Recreational Goods, INC pursuant to this Limited Warranty.
- Damage or improper operation of a product governed by this Limited Warranty to the extent same is caused by customer abuse, misuse, negligence, or failure to follow instructions or operation instructions.
- Use for which the product is not designed.
- Fire, explosion, weather conditions or natural disasters.
- Faulty or improper installation.
- Ordinary wear and tear.
- Damage caused by negligent or improper maintenance procedures and other causes not specified, by beyond the control of Advanced Recreational Goods, INC.
- Improper packaging, repackaging or damage incurred during shipping.

#### In order for this Limited Warranty to be effective you must:

- Be the original purchaser of the product from Advanced Recreational Goods, INC.
- Have not structurally modified, misused or misapplied the product manufactured by Advanced Recreational Goods.
- Have maintained the Advanced Recreational Goods product in accordance with the instructions from Advanced Recreational Goods, INC or as described in maintenance materials provided by Advanced Recreational Goods, INC to you.
- Have complied with all terms for the payment of the Advanced Recreational Goods product.
- Made your claim in writing to Advanced Recreational Goods within the time provided and in accordance with the terms of this Limited Warranty.

It is agreed that you have 30 days from the accrual of a claim to inform Advanced Recreational Goods, INC by registered mail with acknowledgement of receipt. It is agreed that you have one year from accrual of a claim to commence any legal action arising from the purchase of a product manufactured by Advanced Recreational Goods, INC.

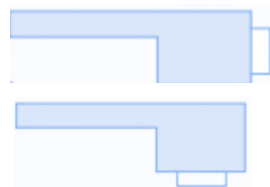
This Limited Warranty shall be governed by and construed in accordance with the laws of the State of Georgia, except as to its principles of conflicts of laws, and Advanced Recreational Goods, INC and you irrevocably submit to the jurisdiction of the State of Georgia and the venue of Henry County in any action brought by the parties hereto concerning the Limited Warranty or the performance by Advanced Recreational Goods, INC thereunder.

For communication related to replacement products or other issues respecting this Limited Warranty, please contact:

Advanced Recreational Goods, INC.

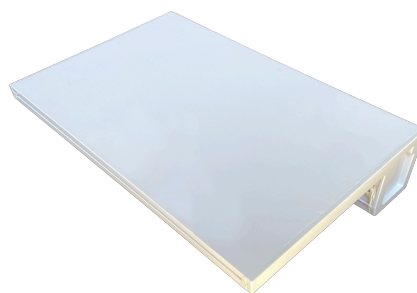
1406 Commerce Drive, Stockbridge, Georgia 30281

# ARG Pool Waterfalls



Back Port

Bottom Port



## Product Features

- PVC
- Cuttable in the Field
- Proven Product
- Our Most Popular Water Feature

Back Port Part Number	White Description	Back Port Part Number	Clear Description	Bottom Port Part Number	White Description
WF1201AWH	WF 12 INCH 1 INCH LIP WHITE	WF1201ACL	WF 12 INCH 1 INCH LIP CLEAR	WF1201BWH	WF 12 INCH 1 INCH LIP WHITE
WF1206AWH	WF 12 INCH 6 INCH LIP WHITE	WF1206ACL	WF 12 INCH 6 INCH LIP CLEAR	WF1206BWH	WF 12 INCH 6 INCH LIP WHITE
WF1209AWH	WF 12 INCH 9 INCH LIP WHITE	WF1209ACL	WF 12 INCH 9 INCH LIP CLEAR	WF1212BWH	WF 12 INCH 12 INCH LIP WHITE
WF1212AWH	WF 12 INCH 12 INCH LIP WHITE	WF1212ACL	WF 12 INCH 12 INCH LIP CLEAR	WF1801BWH	WF 18 INCH 1 INCH LIP WHITE
WF1801AWH	WF 18 INCH 1 INCH LIP WHITE	WF1801ACL	WF 18 INCH 1 INCH LIP CLEAR	WF1806BWH	WF 18 INCH 6 INCH LIP WHITE
WF1806AWH	WF 18 INCH 6 INCH LIP WHITE	WF1806ACL	WF 18 INCH 6 INCH LIP CLEAR	WF1812BWH	WF 18 INCH 12 INCH LIP WHITE
WF1809AWH	WF 18 INCH 9 INCH LIP WHITE	WF1809ACL	WF 18 INCH 9 INCH LIP CLEAR	WF2401BWH	WF 24 INCH 1 INCH LIP WHITE
WF1812AWH	WF 18 INCH 12 INCH LIP WHITE	WF1812ACL	WF 18 INCH 12 INCH LIP CLEAR	WF2406BWH	WF 24 INCH 6 INCH LIP WHITE
WF2401AWH	WF 24 INCH 1 INCH LIP WHITE	WF2401ACL	WF 24 INCH 1 INCH LIP CLEAR	WF3601BWH	WF 36 INCH 1 INCH LIP WHITE
WF2406AWH	WF 24 INCH 6 INCH LIP WHITE	WF2406ACL	WF 24 INCH 6 INCH LIP CLEAR	WF36035BWH	WF 36 INCH 3.5 INCH LIP WHITE
WF2409AWH	WF 24 INCH 9 INCH LIP WHITE	WF2409ACL	WF 24 INCH 9 INCH LIP CLEAR	WF3606BWH	WF 36 INCH 6 INCH LIP WHITE
WF2412AWH	WF 24 INCH 12 INCH LIP WHITE	WF2412ACL	WF 24 INCH 12 INCH LIP CLEAR	WF4801BWH	WF 48 INCH 1 INCH LIP WHITE
WF3601AWH	WF 36 INCH 1 INCH LIP WHITE	WF3601ACL	WF 36 INCH 1 INCH LIP CLEAR	WF4806BWH	WF 48 INCH 6 INCH LIP WHITE
WF3606AWH	WF 36 INCH 6 INCH LIP WHITE	WF3606ACL	WF 36 INCH 6 INCH LIP CLEAR	WF4812BWH	WF 48 INCH 12 INCH LIP WHITE
WF3609AWH	WF 36 INCH 9 INCH LIP WHITE	WF3609ACL	WF 36 INCH 9 INCH LIP CLEAR	WF6001BWH	WF 60 INCH 1 INCH LIP WHITE
WF3612AWH	WF 36 INCH 12 INCH LIP WHITE	WF3612ACL	WF 36 INCH 12 INCH LIP CLEAR	WF6006BWH	WF 60 INCH 6 INCH LIP WHITE
WF4801AWH	WF 48 INCH 1 INCH LIP WHITE	WF4801ACL	WF 48 INCH 1 INCH LIP CLEAR		
WF4806AWH	WF 48 INCH 6 INCH LIP WHITE	WF4806ACL	WF 48 INCH 6 INCH LIP CLEAR	<b>Bottom Port Part Number</b>	<b>Clear Description</b>
WF4809AWH	WF 48 INCH 9 INCH LIP WHITE	WF4809ACL	WF 48 INCH 9 INCH LIP CLEAR	WF1201BCL	WF 12 INCH 1 INCH LIP CLEAR
WF4812AWH	WF 48 INCH 12 INCH LIP WHITE	WF4812ACL	WF 48 INCH 12 INCH LIP CLEAR	WF1801BCL	WF 18 INCH 1 INCH LIP CLEAR
WF6001AWH	WF 60 INCH 1 INCH LIP WHITE	WF6001ACL	WF 60 INCH 1 INCH LIP CLEAR	WF1806BCL	WF 18 INCH 6 INCH LIP CLEAR
WF6006AWH	WF 60 INCH 6 INCH LIP WHITE	WF6006ACL	WF 60 INCH 6 INCH LIP CLEAR	WF2401BCL	WF 24 INCH 1 INCH LIP CLEAR
WF6009AWH	WF 60 INCH 9 INCH LIP WHITE	WF6009ACL	WF 60 INCH 9 INCH LIP CLEAR	WF2406BCL	WF 24 INCH 6 INCH LIP CLEAR
WF6012AWH	WF 60 INCH 12 INCH LIP WHITE	WF7201ACL	WF 72 INCH 1 INCH LIP CLEAR	WF3606BCL	WF 36 INCH 6 INCH LIP CLEAR
WF7201AWH	WF 72 INCH 1 INCH LIP WHITE	WF7206ACL	WF 72 INCH 6 INCH LIP CLEAR		
WF7206AWH	WF 72 INCH 6 INCH LIP WHITE	WF8401ACL	WF 84 INCH 1 INCH LIP CLEAR	<b>Bottom Port Part Number</b>	<b>Gray Description</b>
WF8401AWH	WF 84 INCH 1 INCH LIP WHITE	WF8406ACL	WF 84 INCH 6 INCH LIP CLEAR	WF1806BGR	WF 18 INCH 6 INCH LIP GRAY
WF8406AWH	WF 84 INCH 6 INCH LIP WHITE			WF2406BGR	WF 24 INCH 6 INCH LIP GRAY
WF9601AWH	WF 96 INCH 1 INCH LIP WHITE			WF36035BGR	WF 36 INCH 3.5 INCH LIP GRAY
WF9606AWH	WF 96 INCH 6 INCH LIP WHITE			WF3606BGR	WF 36 INCH 6 INCH LIP GRAY
				WF4806BGR	WF 48 INCH 6 INCH LIP GRAY

Back Port Part Number	Gray Description	Back Port Part Number	Tan Description	Lip Sizes Available
WF1201AGR	WF 12 INCH 1 INCH LIP GRAY	WF1201ATN	WF 12 INCH 1 INCH LIP TAN	1 inch
WF1206AGR	WF 12 INCH 6 INCH LIP GRAY	WF1206ATN	WF 12 INCH 6 INCH LIP TAN	3 inch
WF1209AGR	WF 12 INCH 9 INCH LIP GRAY	WF1209ATN	WF 12 INCH 9 INCH LIP TAN	3.5 inch
WF1212AGR	WF 12 INCH 12 INCH LIP GRAY	WF1212ATN	WF 12 INCH 12 INCH LIP TAN	6 inch
WF1801AGR	WF 18 INCH 1 INCH LIP GRAY	WF1801ATN	WF 18 INCH 1 INCH LIP TAN	9 inch
WF1806AGR	WF 18 INCH 6 INCH LIP GRAY	WF1806ATN	WF 18 INCH 6 INCH LIP TAN	12 inch
WF1809AGR	WF 18 INCH 9 INCH LIP GRAY	WF1809ATN	WF 18 INCH 9 INCH LIP TAN	Not in All Colors
WF1812AGR	WF 18 INCH 12 INCH LIP GRAY	WF1812ATN	WF 18 INCH 12 INCH LIP TAN	
WF2401AGR	WF 24 INCH 1 INCH LIP GRAY	WF2401ATN	WF 24 INCH 1 INCH LIP TAN	
WF2406AGR	WF 24 INCH 6 INCH LIP GRAY	WF2406ATN	WF 24 INCH 6 INCH LIP TAN	
WF2409AGR	WF 24 INCH 9 INCH LIP GRAY	WF2409ATN	WF 24 INCH 9 INCH LIP TAN	
WF2412AGR	WF 24 INCH 12 INCH LIP GRAY	WF2412ATN	WF 24 INCH 12 INCH LIP TAN	
WF3601AGR	WF 36 INCH 1 INCH LIP GRAY	WF3601ATN	WF 36 INCH 1 INCH LIP TAN	
WF3603AGR	WF 36 INCH 3 INCH LIP GRAY	WF3606ATN	WF 36 INCH 6 INCH LIP TAN	
WF3606AGR	WF 36 INCH 6 INCH LIP GRAY	WF3609ATN	WF 36 INCH 9 INCH LIP TAN	
WF3609AGR	WF 36 INCH 9 INCH LIP GRAY	WF3612ATN	WF 36 INCH 12 INCH LIP TAN	
WF3612AGR	WF 36 INCH 12 INCH LIP GRAY	WF4801ATN	WF 48 INCH 1 INCH LIP TAN	
WF4801AGR	WF 48 INCH 1 INCH LIP GRAY	WF4806ATN	WF 48 INCH 6 INCH LIP TAN	
WF4806AGR	WF 48 INCH 6 INCH LIP GRAY	WF4809ATN	WF 48 INCH 9 INCH LIP TAN	
WF4809AGR	WF 48 INCH 9 INCH LIP GRAY	WF4812ATN	WF 48 INCH 12 INCH LIP TAN	
WF4812AGR	WF 48 INCH 12 INCH LIP GRAY	WF6001ATN	WF 60 INCH 1 INCH LIP TAN	
WF6001AGR	WF 60 INCH 1 INCH LIP GRAY	WF6006ATN	WF 60 INCH 6 INCH LIP TAN	
WF6006AGR	WF 60 INCH 6 INCH LIP GRAY			
WF7206AGR	WF 72 INCH 6 INCH LIP GRAY			

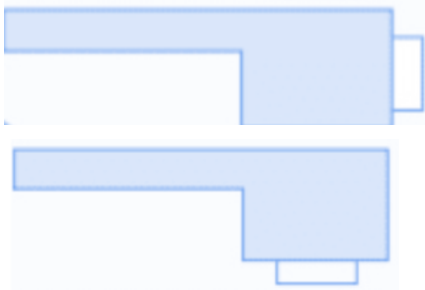


Please Visit [www.argpool.com](http://www.argpool.com) For Videos Of Our Waterfalls In Action - Also Our Custom Cut Waterfalls In Action.

# Pool Waterfall Tech Guide

ARG Pool Waterfalls Have Been Produced For Almost 20 Years

Ports (Inlets) are 1-1/2 in Spigot - PVC Material - One Gallon Per Minute Per Inch\*



Back Port

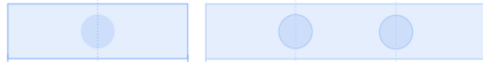
Bottom Port

## Lip Sizes Available

Not Available in All Colors

1 inch  
3 inch  
3.5 inch  
6 inch  
9 inch  
12 inch

Because ARG Waterfalls Are PVC, They Are Easier to Cut In The Field vs The Competition.

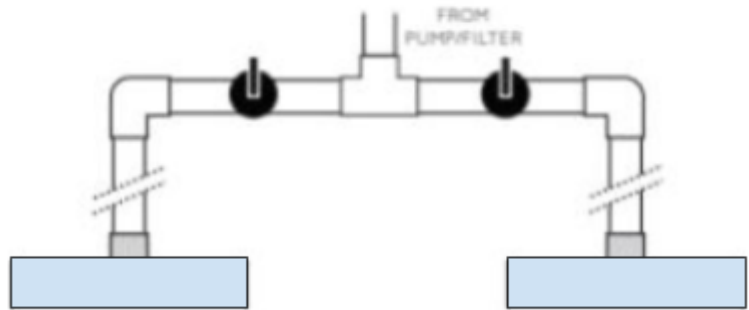
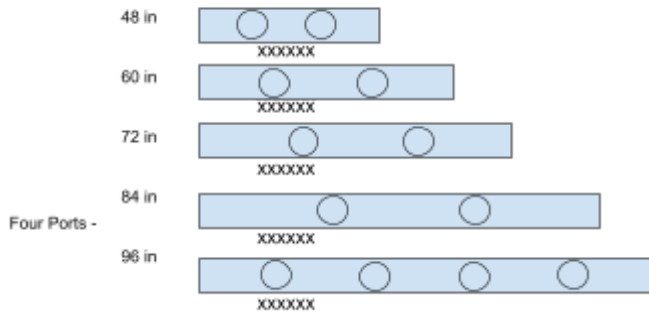


Plumbing Inlet Port:

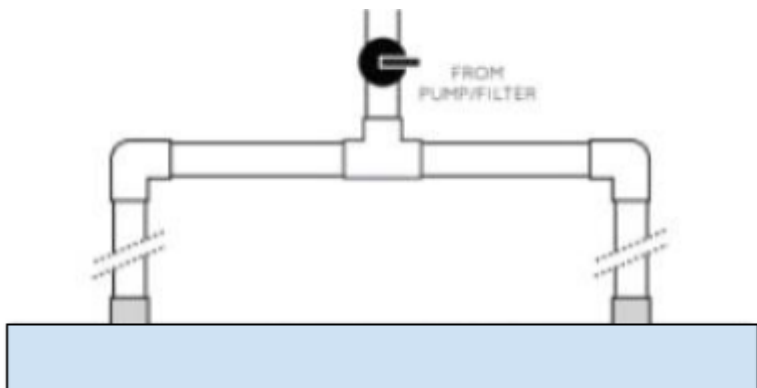
**12 in, 18 in, 24 in & 36 in** are One Port  
**48 in, 60 in, 72 in & 84 in** are Two Ports  
**96 in** are Four Ports

Suggested Pipe Configuration :  
2 Way Valve

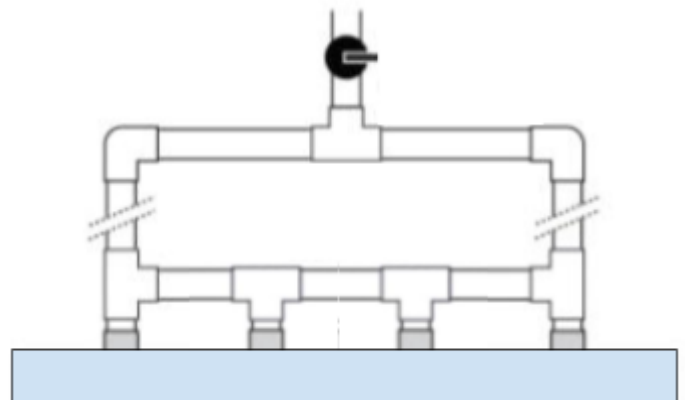
One Port - In the middle of the Waterfall  
Two Ports -



Up to 36 Inch Long



48 Inch - 84 Inch Long



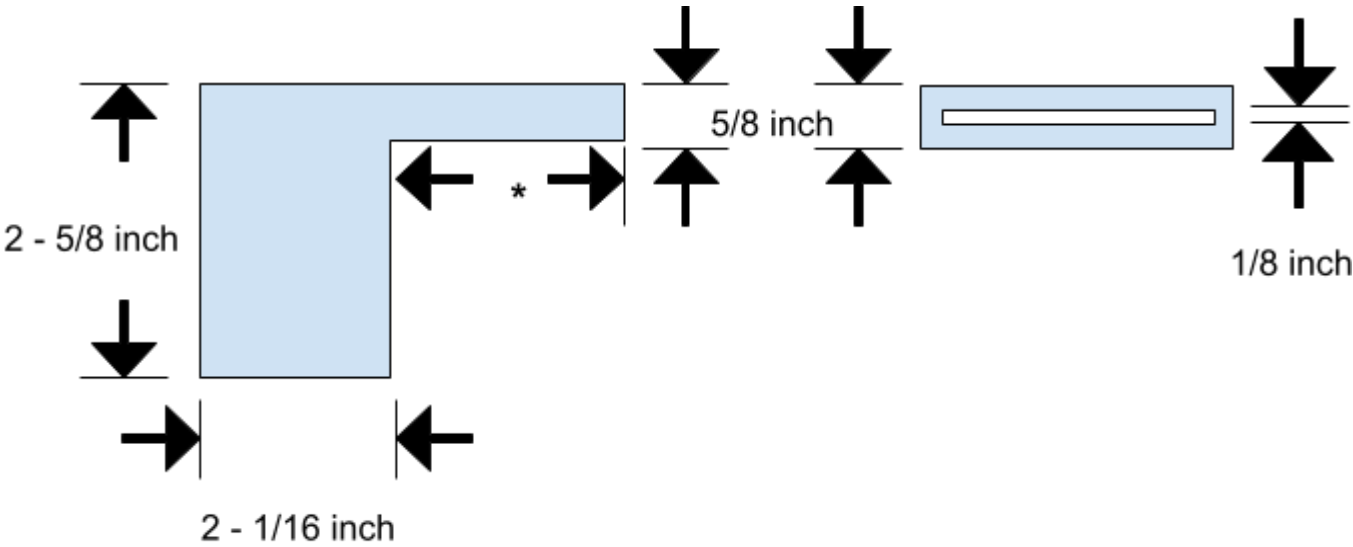
96 Inch Long

\*One Gallon Per Minute, Per Inch (ex. 24 inch Waterfall Requires 24 GPM)



# Waterfall Measurements

Body



\*Lip Width 1 Inch = 1 - 1/16 inch      3 inch = 3 inch      3.5 inch = 3.5 inch      6 Inch = 6 inch  
9 inch = 9 inch      12 inch = 12 inch

Lip Length

Waterfall	Lip Length (inch) **
12 inch (WF12XXXXXX)	12.7 inch
18 inch (WF18XXXXXX)	18.6 inch
24 inch (WF24XXXXXX)	24.45 inch
36 inch (WF36XXXXXX)	36.2 inch
48 inch (WF48XXXXXX)	48 inch
60 inch (WF60XXXXXX)	59.85 inch
72 inch (WF72XXXXXX)	71.54 inch
84 inch (WF84XXXXXX)	83.35 inch
96 inch (WF96XXXXXX)	95.24 inch

\*\*Plus or Minus .33 inches

# Pool Waterfall Tech Guide



A

Part Number  
WFRT00

**Must use filtered water (water must go through a filter before going to the waterfall).** A rock trap (A) is provided with each waterfall. This is only to collect the debris from building the pool, not for ongoing maintenance.

A metal tool (B) is provided for when cutting waterfalls in the field. The supports that keep the lip open must be broken off one inch from the front of the lip. The waterfall tool can also be used to clean the opening of the lip.



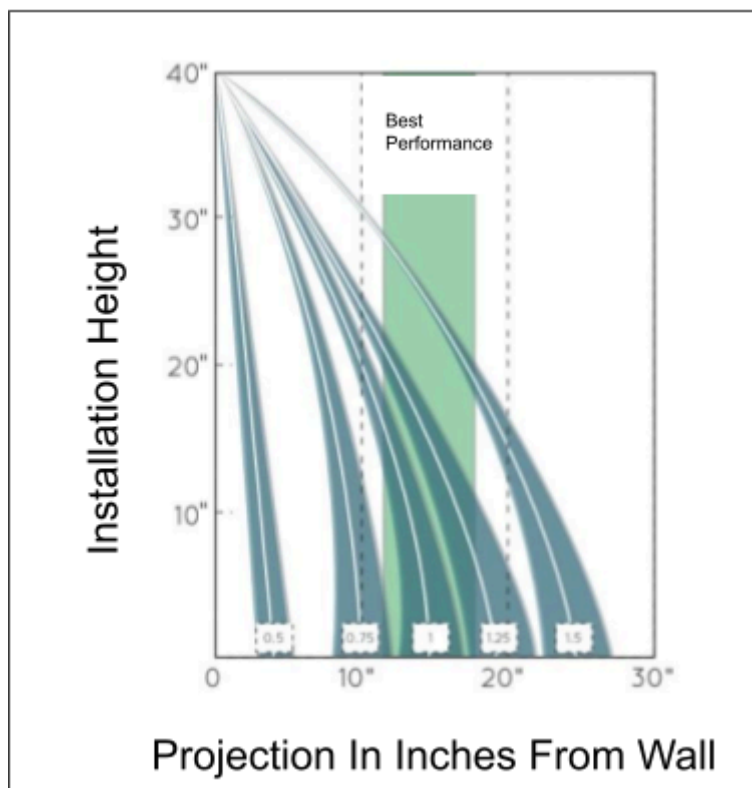
B

Part Number  
WFMT00

We recommend using at least one GPM per inch of waterfall. Using less may cause the water to wet the wall, affecting the appearance of the waterfall.

As the water sheet comes out of the waterfall, it will close in, looking like a V pattern.

To minimize this, try more GPM. The higher a waterfall is installed, the more pronounced the V shape will be.



## 12" & 18" Waterfalls

The flume on these sizes of waterfall is very narrow. For a more traditional appearance, we recommend installing the 12" at max height of 18" (8" projection) and 18" at max height of 24" (9" projection).

## Wet Wall Effect

Low flow installations may cause the wall surface to become wet when the waterfall is flowing. For a dry wall effect, it is best to operate at the higher end of the recommended GPM range. At the low end of the recommended GPM range the waterfall flume will still appear good, but you may be in the potential "drip zone." (Example: For a dry wall on a 36" waterfall, 36 GPM or more will give the best results.)

## Extended Heights and Projection

For a more dramatic effect, it is possible to achieve increased projection and heights above 40" by increasing the gallons per minute. Results outside of tested parameters may vary.

## Test Conditions

Testing was performed in our factory under optimum conditions. Environmental factors such as weather, construction method, hydraulic variations, and different equipment can alter appearance.

## Waterfall Custom Cut Order Form

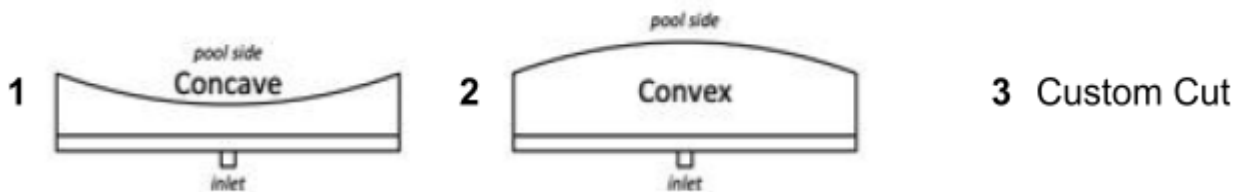
Complete Form and email to [CS@argpool.com](mailto:CS@argpool.com)

Builder Name \_\_\_\_\_ Date \_\_\_\_\_  
 Address \_\_\_\_\_  
 Contact \_\_\_\_\_ Phone \_\_\_\_\_  
 Email \_\_\_\_\_ Distributor \_\_\_\_\_

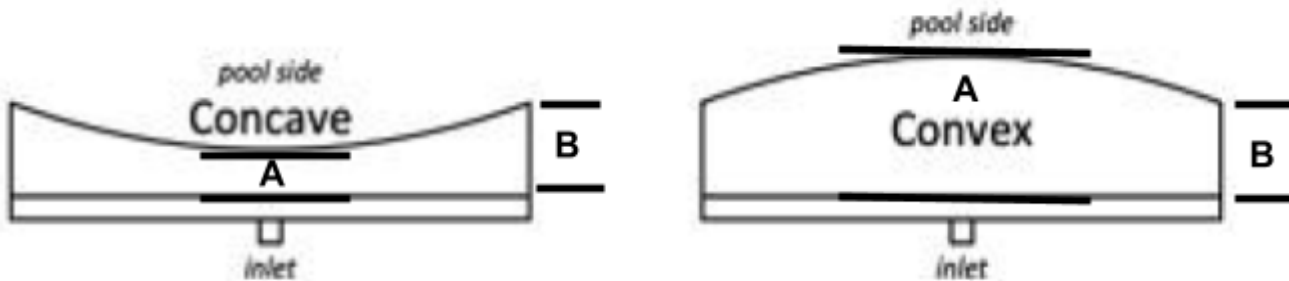
ARG Waterfall Part Number \_\_\_\_\_ Quantity \_\_\_\_\_

Back or Bottom Inlet \_\_\_\_\_

Type of Cut (Circle Number):



For Numbers 1 and 2, list the radius desired in feet \_\_\_\_\_



List the length of the lip to the body on the ends (B) \_\_\_\_\_ center (A) \_\_\_\_\_

For Number 3, a template must be sent to ARG at:

ARG  
 1406 Commerce Dr, Stockbridge, GA 30281

Please write your name and email on the template.

Note: Custom Cut Waterfalls cannot be returned. A PO Number from the distributor is required before a custom cut can be made. Filtered water must be used on waterfalls.

There is an upcharge for custom cuts. Please check with your distributor for details.

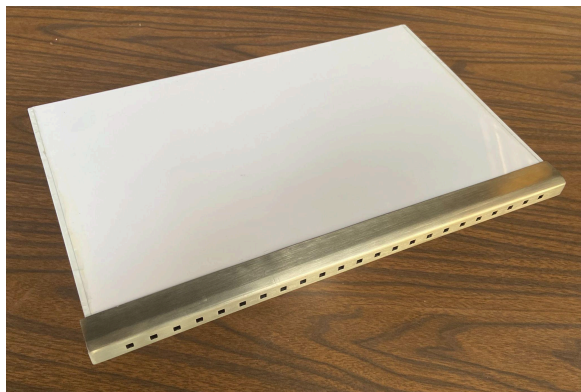
Any questions please email [cs@argpool.com](mailto:cs@argpool.com).

\$40 Charge On Custom Cut 12 in To 48 in Part Number: WFCC40

\$70 Charge On Custom Cut 60 in + 72 in WFCC70

\$100 Charge On 84 in + 96 in WFCC100

# ARG Pool Rainfalls




## Product Features

- **PVC Body**
- **Stainless Steel Blade (Can Be Spray Painted in The Field)**
- **12 Inch to 72 Inch Lengths**
- **1 Inch and 6 Inch Lip Sizes Available**
- **Back Port Only**

These can be Plumbed Horizontally or Vertically  
Please Visit [www.argpool.com](http://www.argpool.com) For Videos Of The ARG Pool Rainfalls In Action.

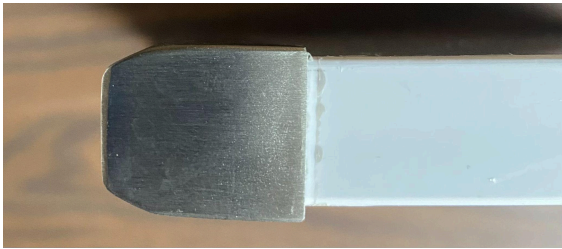
Rainfall Blade Can Not Be Serviced or Removed.  
**Must Use Filtered Water (Water Must Come Directly From Filter to Rainfall)**

Back Port Part Number	Stainless Steel Description
RF1201ASS	RF 12 INCH 1 INCH LIP STAINLESS STEEL
RF1206ASS	RF 12 INCH 6 INCH LIP STAINLESS STEEL
RF1801ASS	RF 18 INCH 1 INCH LIP STAINLESS STEEL
RF1806ASS	RF 18 INCH 6 INCH LIP STAINLESS STEEL
RF2401ASS	RF 24 INCH 1 INCH LIP STAINLESS STEEL
RF2406ASS	RF 24 INCH 6 INCH LIP STAINLESS STEEL
RF3601ASS	RF 36 INCH 1 INCH LIP STAINLESS STEEL
RF3606ASS	RF 36 INCH 6 INCH LIP STAINLESS STEEL
RF4801ASS	RF 48 INCH 1 INCH LIP STAINLESS STEEL
RF4806ASS	RF 48 INCH 6 INCH LIP STAINLESS STEEL
RF6001ASS	RF 60 INCH 1 INCH LIP STAINLESS STEEL
RF6006ASS	RF 60 INCH 6 INCH LIP STAINLESS STEEL
RF7201ASS	RF 72 INCH 1 INCH LIP STAINLESS STEEL
RF7206ASS	RF 72 INCH 6 INCH LIP STAINLESS STEEL

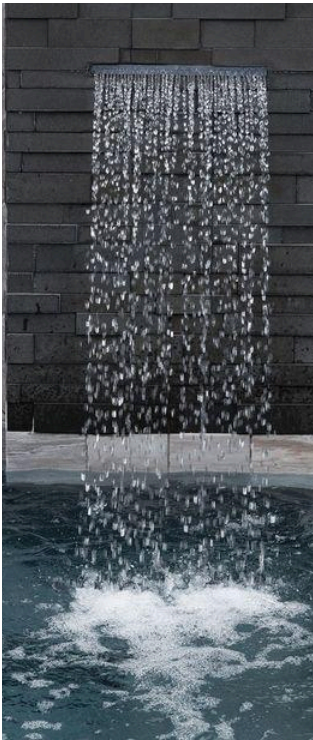


**Plumb Vertically With A 90° Elbow**

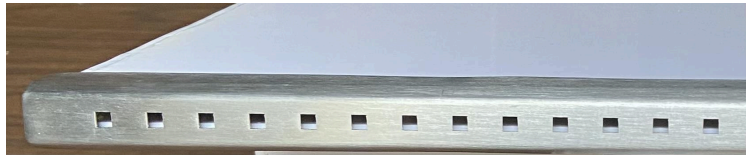
**3 - 3/4 Inch Minimum From Back of Rainfall to Top of Elbow**



Rainfalls Are 0.5 Gallon Per Minute Per Inch



1 Inch Lip = 1 - 1/4 Inch  
6 Inch = 6 - 1/4 Inch



Rainfall Slots Are 1/8 Inch Square  
3/8 Inch Apart

Rainfall Blade Adds 1/8 Inch to Length of Waterfall

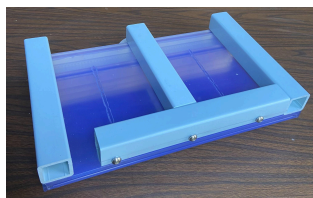




### Product Features

- Easiest LED Waterfall To Install And Service
- This Waterfall Design Resolves LED Waterfall Strip Issues
- The LED Metal Topper Design Is An Elegant Addition To Any Style Pool
- Available in Stainless Steel, Copper, White and Gray
- Available in 12 inch, 24 inch and 36 inch
- 12 Volt LED Strip

Order In Two Part Numbers - The Waterfall By Size And The Topper By Size And Color



**Waterfall Kit**



**LED Plate Kit**

Part Numbers	LED Topper Waterfall 12 Inch	24 Inch	36 Inch
<b>Waterfall Kit</b> Waterfalls with Spacers 3 Screws, Instructions	TWF121 TWF126	TWF241 TWF246	TWF361 TWF366
<b>LED Plate Kit</b> Plate, LED Strip, 100 FT Cord, Allen Wrench			
SS Topper Plate Kit Copper Topper Plate Kit White Topper Plat Kit Gray Topper Plate Kit	TWFLK12SS TWFLK12CP TWFLK12WH TWFLK12GR	TWFLK24SS TWFLK24CP TWFLK24WH TWFLK24GR	TWFLK36SS TWFLK36CP TWFLK36WH TWFLK36GR



**Gray**

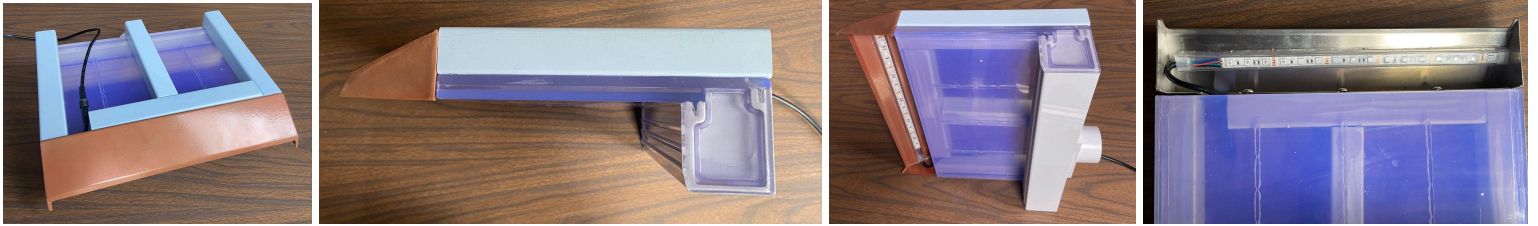
**White**

**Stainless Steel**

**Copper**

These Metal Plates Are Stainless Steel. The White, Gray and Copper Are Powder Coated For Long Life and Durability.

Please Visit [www.argpool.com](http://www.argpool.com) For Videos Of The Topper LED Waterfall In Action.



To Control The LED Light On The Waterfall, Use The ARG COLORSYNC Controller.

The LED Light Strip Is 4 Wire, 12 Volt. Connect To The ColorSync Controller And The ColorSync Controller To Your Automation.



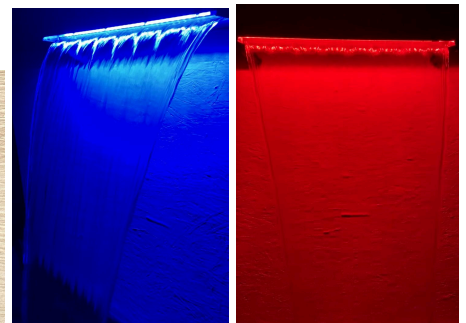
ColorSync Controller Part Number LCSCCT

The ARG ColorSync Controller Will Power Up To 12 Feet Of Waterfall. It Also Has The 12 Volt To 120 Volt Transformer Built In, So No Need To Add One.

**Day**



**Night**





ARG

# Clean Pro

## Inline Chlorine/Bromine Tablet Feeder



### Automatic Chlorinator RESIDUAL SANITIZER SYSTEM

### Specifically Designed For Variable Speed Pump Applications

- Accepts 1 Inch or 3 Inch Chlorine or Bromine Tablets.
- Holds Eleven 3 Inch Tablets or Five Pounds of 1 inch Tablets.
- Air Bleed for Better Performance.
- Large Body For Easier Service.
- Clear Feeder Tube Indicates When Unit Is In Operation.
- 2 Inch And 1 ½ Inch Unions Included.
- Inserts In Body Are Specifically Designed To Work With Variable Speed Pumps. They May Be Removed When Using With A Single Speed Pump. (Or When Less Chlorination Is Desired).
- Part Number CIV00.



Manual Air Relief Plug Allows the User to Bleed the Air for Better Performance.

Chlorinators Sometimes Suffer from “Air Lock”. Better Designed Chlorinators Have This Air Relief Plug Feature.



Left - Clear Feeder Tube Allows the User to See That The Unit is Operating. Clear Feeder Tube is Easily Replaceable. Clear Feeder Tube Feeds Chlorinator Body at The Top for More Efficient Performance.

Right - Chlorinator Dial Allows User to Set The Chlorinator for Desired Amount.

Inserts In Body Are Specifically Designed To Work With Variable Speed Pumps. They May Be Removed When Using With A Single Speed Pump. (Or When Less Chlorination Is Desired).

Email [cs@argpool.com](mailto:cs@argpool.com) for more information.

Replacement Parts Page 19



# ARG Deck Jet

Assembly Part Number  
DJ001



Deck Jet Assembly DJ001



3 to 6 GPM  
Replacement Parts Page 19



- Parts
- Single Stream Nozzle  
DJN01
  - Dual Stream Nozzle  
DJN02
  - Round Cap  
Gray DJRCGR
  - Tan DJRCTN
  - White DJRCWT
  - Square Cap  
Gray DJSCGR
  - Tan DJSCTN
  - Deck Jet Plug  
DJP01

# Gunite Spa Jets

10 in Gunite  
Venturi Tee



GJ101

Air 1 in x 1/2 in



GJ103

Air 3/4 in x 1/2 in

4 in Nozzle 17-20 GPM

Double Tee  
Socket



GJD00

Double Tee  
Spigot



GJD01

Double Tee Nozzle 13-17 GPM

Hydro Jet



GJ410  
17-20 GPM

4 inch and  
1 inch  
Nozzles  
Included

4 in Nozzle



GJ414

1 in Nozzle



GJ411

Double Tee Nozzle



GJD12



## Deluxe Gunitite Spa Jet Assembly

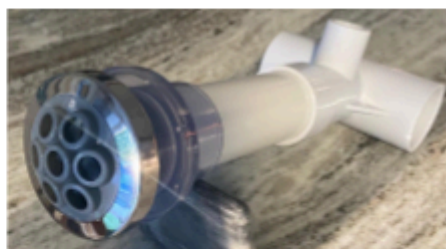


Spa Massage Hydro Jet

Black SKHJBK Gray SKHJGR White SKHJWH

Pipe Not Included 17-20 GPM

Spa Massage Hydro Jet Black



Spa Massage Double Tee Jet

Black SKDJBK Gray SKDJGR White SKDJWH

Pipe Not Included 13-17 GPM

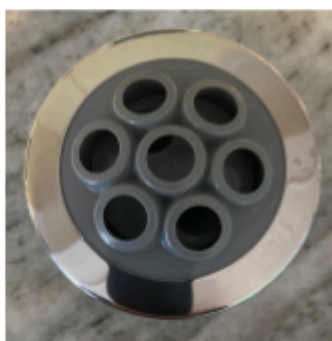
Spa Massage Double Tee Jet Gray

## Deluxe Gunitite Spa Jet Fitting

Stainless Steel Trim - Rotates For Therapy Massage  
1-1/2 in FPT Fits Inside Most Return Fittings



Black SK115MBK



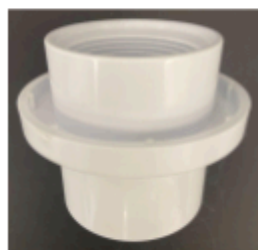
Gray SK115MGR



White SK115MWH

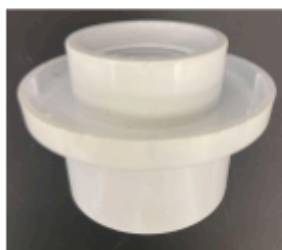
# Fittings

Water Stop  
Adapter 1-1/2 in



Clear WSA015CL  
White WSA015WH

Water Stop  
Adapter 2 in



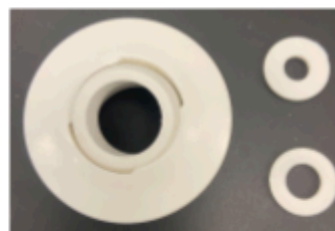
Clear WSA002CL  
White WSA002WH

Flush Mount  
Return Fitting\*



Black FR00BK  
Dark Gray FR00DG  
Gray FR00GR  
White FR00WH  
1-1/2 in Insider x 1 in Socket

Aussie 1-1/2 in  
Insider Fitting



Black IA015BK  
Dark Gray IA015DG  
Gray IA015GR  
White IA015WH

\*1 in Eye With 3/4 in Reducer

2 in Insider  
Fitting



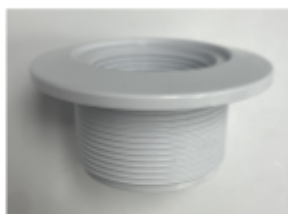
Black IF002BK  
Dark Gray IF002DG  
Gray IF002GR  
White IF002WH

Wall Fitting 1-1/2 in Socket  
Gunite



Black GF015BK  
Dark Gray GF015DG  
Gray GF015GR  
White GF015WH

Wall Fitting  
1-1/2 in FPT x 2 in MPT



White WFT002WH

Eyeball Fitting  
1-1/2 in MPT x 3/4 in  
Eye



Black EFM015DBK  
Dark Gray EFM015DDG  
Gray EFM015DGR  
White EFM015DWH

Wall Fitting  
1-1/2 in FPT x  
1-1/2 in MPT



Black GF01515BK  
Dark Gray GF01515DG  
Gray GF01515GR  
White GF01515WH

Aussie 1 in  
Insider Fitting



Black IA001BK  
Dark Gray IA001DG  
Gray IA001GR  
White IA001WH

Gutter Drain Assy  
2 x 4 - 2 in Socket



GD02WH  
White

Gutter Drain  
2 x 4 Grate



GDGWH  
White

Gutter Drain  
Extension Kit



GDEKWH  
White

# Filter Manifolds DE



## Baskets Heavy-Duty

Better Than The OEM





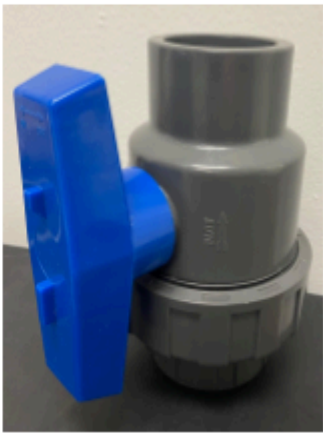


# Air Reliefs

Air Relief P Style		Sand Filter Air Relief	Air Relief H Style
			
ARP9820 With Gauge Competitor 98209800	ARP9823 Less Gauge Competitor 98209803	Clear ARP2734 Black ARP2730 With Gauge	ARHDEX2 With Gauge ARHDEX2LG Less Gauge Competitor DEX2420MAR2

					
ARHCCX Competitor CCX1000V	ARHDEXO Competitor DEX2400S	ARP1549 Competitor 15468	ARP1547 Competitor 154687	GBOM Gauge Bottom Thread	GBAM Gauge Back Thread

## Ball Valves Socket x Socket

		
Socket x Socket 2 in BV002 1-1/2 in BV015	Socket x Socket 1 in BV001 3/4 in BV035	Socket With Union 2 in BVU02 1-1/2 in BVU15



# Unions

Hi-Temp 1-1/2 in  
Socket x Male Thread



UHTM015

Hi-Temp 2 in  
Socket x Male Thread



UHTM002

1-1/2 in Socket x  
Male Thread



UMT015

2 in Socket x  
Male Thread



UMT002

2 in Socket x 1-1/2 in  
Male Thread



UMT215

2 in Socket  
PVC White



US002

1-1/2 in Socket  
PVC White



US015

Raypak Style Heater Union Kit  
006723F



URS02



Replacement Tee Gasket  
UTG02 Sold In A Bag Of 10 pcs



Union Tailpiece Assembly 1 1/2 in UTA015  
Union Tailpiece Assembly 2 in UTA002

# Parts




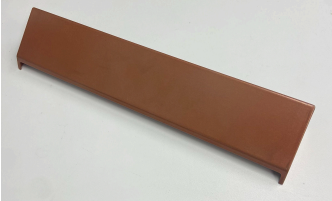
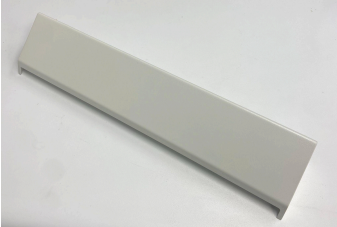


1-1/2 in All Purpose Plug  
APP015



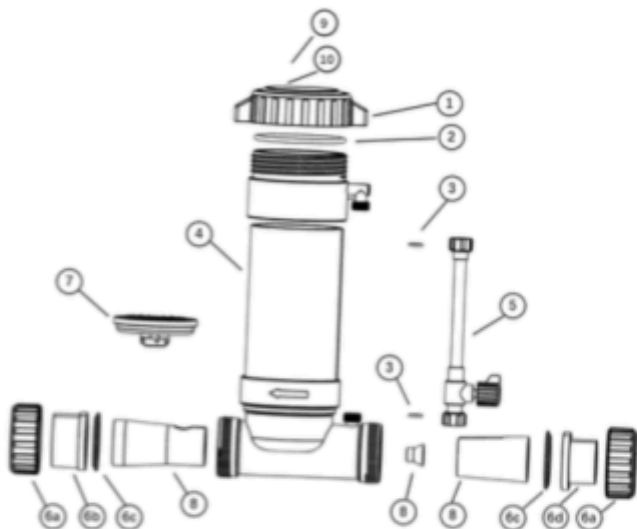
Barracuda Style  
Diaphragm With Ring  
BSDIA

## Replacement Parts

### Replacement Metal Plate

<b>Components</b>	<b>12 Inch</b>	<b>24 Inch</b>	<b>36 Inch</b>
LED SS Topper Plate Only 	TWFP12SS	TWFP24SS	TWFP36SS
LED Copper Topper Plate Only 	TWFP12CP	TWFP24CP	TWFP36CP
LED White Topper Plate Only 	TWFP12WH	TWFP24WH	TWFP36WH
LED Gray Topper Plate Only 	TWFP12GR	TWFP24GR	TWFP36GR
LED Strip 	LWFS12	LWFS24	LWFS36
100 Cord With Plug 	LWFC100		
3 Screw Pack Allen Wrench	TWFSP TWFAW		

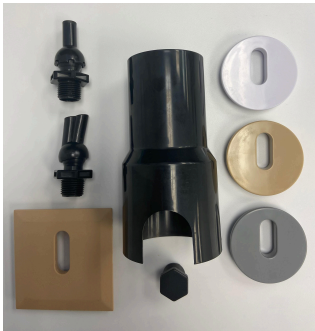
Inline Chlorine/Bromine  
Tablet Feeder



- 1 - Lid CIV01
- 2 - Lid O-ring CIV02
- 3 - Control Valve Gasket (2) Pieces CIV03
- 4 - Body N/A
- 5 - Control Valve and Clear Tube CIV04
- \* 6a - Union Nut UT001
- \* 6b - 2 in Union Piece UT002
- \* 6c - Union gasket UT003
- \* 6d - 1 1/2 in Union Piece UT015
- 7 - Grate Check Valve CIV05
- 8 - Variable Speed Reducers (3) Pieces CIVSD
- 9 - Air Bleeder Plug
- 10 - Air Bleeder Plug O-ring

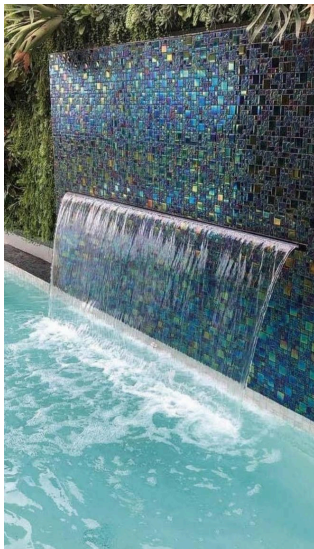
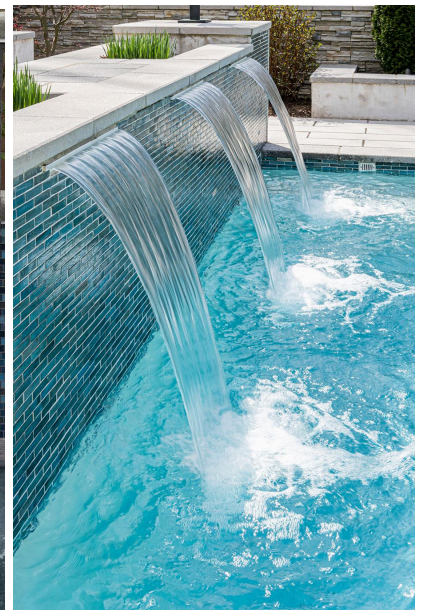
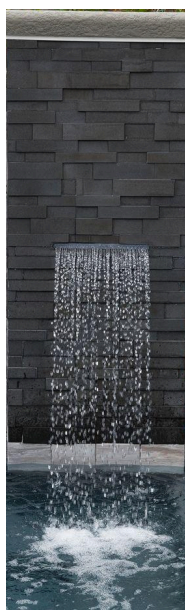
\*Sold As A Set. For 2 inch, UTA002. For 1-1/2 inch, UTA015.

Deck Jet



- Parts
- Single Stream Nozzle  
DYN01
  - Dual Stream Nozzle  
DYN02
  - Round Cap  
Gray DJRCGR  
Tan DJRCTN  
White DJRCWT
  - Square Cap  
Gray DJSCGR  
Tan DJSCTN
  - Deck Jet Plug  
DJP01





Advanced Recreational Goods, Inc. 1406 Commerce Dr., Stockbridge, GA 30281  
PH (678) 837-7479 [www.argpool.com](http://www.argpool.com) [cs@argpool.com](mailto:cs@argpool.com)