

# DRYCONN®

## WATERPROOF CONNECTORS

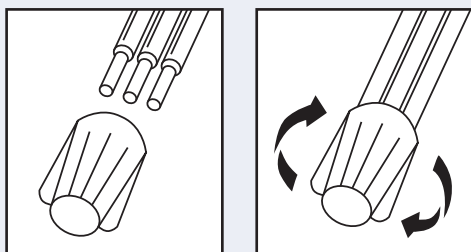
Filled Connectors for Direct Bury Use



### INSTALLATION INSTRUCTIONS

**IMPORTANT:** Turn off power before installing or removing connector. Product to be used in accordance with local and national codes.

1. Strip wires 5/8" (15.9mm).
2. Align any frayed strands or conductors.
3. Pre-twisting unnecessary. Place stripped wires together with ends of insulation even.
4. Twist connector onto wires pushing firmly until hand-tight. Do not over torque.
5. Wipe sealant in and around conductors and connector opening while tightening. Do not reuse.



### NEC Required for Outdoor Connections

Selected 600V Wire Combinations  
For use with solid and/or stranded combinations.

4-6 #18	2-6 #16	2-4 #14
2-3 #12	2 #12 w/1 #14	1 #12 w/1 #18, 16 or 14
3 #16 w/2 #18	2 #14 w/2 #16	1 #10 w/1-2 #14

Contact factory for a complete list of wire combinations at 800.633.0232.

### Small Direct Bury\* Waterproof Connectors

Catalog #	Selling Unit
10444	Bag of 10

### PRODUCT SPECIFICATIONS & MEASUREMENTS

Max. Voltage: 600V max. building wire  
(1000V max. signs or luminaires)

Connector Size: 1 19/64" x 43/64"

Wire Type: Copper/Copper

Wire Range: Min #18/Max #12

Temperature Rating: 105°C (221°F)

Silicone Sealant Temperature: -45°F to 400°F

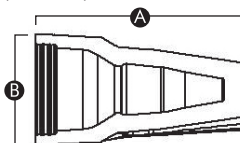
UL Designation: MWP

Measurements (Inches):

A - 1.30

B - 0.67

C - 0.51



UL Listed as a Sealed Wire Connector. For use in dry, damp, wet locations below or above grade when used in an enclosure. \*For use in direct bury applications when operating at 30 volts or less.

