

## LONESTAR



Item# 87048 LP  
Item# 87049 NG

### STANDARD FEATURES

- 60,000 BTU's
- 4 Welded Stainless Steel Burners
- Single Piece Dual Lined Hood
- Piezo igniters/ Zinc Control Knobs
- Solid Stainless Steel Grates
- Heavy Duty Thermometer
- Warming Rack 210 Sq. In.
- Twin Lighting System
- Cooking Surface 810 Sq. In.
- Cutout- 31" x 21" x 9.5"

## ANGUS



Item# 47628 LP  
Item# 47629 NG

### STANDARD FEATURES

- 75,000 BTU's
- 4 Cast Stainless Steel Burners
- Infrared Burner 15,000 BTU's
- Single Piece Dual Lined Hood
- Piezo igniters/ Zinc Knobs
- Solid Stainless Steel Grates
- Heavy Duty Thermometer
- Warming Rack 210 Sq. In.
- SS Rotisserie Motor
- Twin Lighting System
- Cooking Surface 810 Sq. In.
- Cutout- 31" x 21" x 9.5"

## BRAHMA



Item# 57568 LP  
Item# 57569 NG

### STANDARD FEATURES

- 90,000 BTU's
- 5 Cast Stainless Steel Burners
- Infrared Burner 15,000 BTU's
- Single Piece Dual Lined Hood
- Piezo igniters/ Zinc Knobs
- Solid Stainless Steel Grates
- Heavy Duty Thermometer
- Warming Rack 266 Sq. In.
- SS Rotisserie Motor
- Twin Lighting System
- Cooking Surface 1,026 Sq. In.
- Cutout- 38.5" x 21" x 9.5"

## 7 - BURNER



Item# 18248 LP  
Item# 18249 NG

### STANDARD FEATURES

- 105,000 BTU's
- 4 Cast Stainless Steel Burners
- Infrared Burner 15,000 BTU's
- Single Piece Dual Lined Hood
- Piezo igniters/ Zinc Knobs
- Solid Stainless Steel Grates
- Heavy Duty Thermometer
- Warming Rack 210 Sq. In.
- SS Rotisserie Motor
- Twin Lighting System
- Double Side Burner
- Built in trim kit
- CSA Certified
- Cooking Surface 810 Sq. In.
- Cutout- 47.75" x 22" x 9"



Since 1993 we have been building exceptional products with your backyard, patio and outdoor living needs in mind. Our impressive menu of products include

Outdoor Kitchens, BBQ Components, BBQ Grills & Carts, Fire Features and Grilling Accessories. Bull Grills are built to last with the highest quality grade materials and quality construction. Customizing your Bull Outdoor Kitchen is easy with more than 50 component upgrades. "If you can dream it, we can build it" KNOW BULL.

## BISON



- Stainless Steel Construction
- Stainless Steel Grates
- Adjustable Charcoal Bed
- Heavy Duty Thermometer

Item# 67529

*Cooking the Natural way on the Bison Grill, for the GrillMaster that insists on maximum flavor from BULL 100% Lump Mesquite Charcoal.*

*\*Bison is available in Grill Carts and Heads, for Outdoor Kitchens.*



*NOW included on All Bull Grills!*



Bull's Flame Tamer technology minimizes uneven heating and improves heat distribution on your grill by 150%. We've reduced the hot and cold spots so you can use the entire grill.

**BULLBBQ.COM**



The Brand Choice for Commercial and Professional BBQ's  
©2017 Bull Outdoor Products, Inc. All Rights Reserved.

bop1601# 24156

## BULL GRILLS & COMPONENTS

# TURN A BULL LOOSE IN YOUR BACKYARD



**DIABLO GRILL HEAD**  
105,000 BTU's

Item# 62648 LP  
Item# 62649 NG



**BULLBBQ.COM**

## COMMERCIAL GRIDDLE



Item# 73008 LP  
Item# 73009 NG

### STANDARD FEATURES

- 45,000 BTU's
- 3 Welded Stainless Steel Burners
- Piezo igniters/ Zinc Control Knobs
- Cast Iron Chromium Plated Griddle
- Full Size Grease Tray
- Cooking Surface 556 Sq. In.
- Cutout- 25.75" x 20.5" x 9.5"

## OUTLAW



Item# 26038 LP  
Item# 26039 NG

### STANDARD FEATURES

- 60,000 BTU's
- 4 Cast Iron Porcelain Coated Burners
- Single Piece Dual Lined Hood
- Piezo igniters/ Zinc Control Knobs
- Solid Stainless Steel Grates
- Heavy Duty Thermometer
- Warming Rack 210 Sq. In.
- Cooking Surface 810 Sq. In.
- Cutout- 31" x 21" x 9.5"

## RENEGADE



Item# 26038 LP  
Item# 26039 NG

### STANDARD FEATURES

- 75,000 BTU's
- 5 Cast Iron Porcelain Coated Burners
- Single Piece Dual Lined Hood
- Piezo igniters/ Zinc Control Knobs
- Solid Stainless Steel Grates
- Heavy Duty Thermometer
- Warming Rack 266 Sq. In.
- Cooking Surface 1,026 Sq. In.
- Cutout- 38.5" x 21" x 9.5"

## STEER



Item# 69008 LP  
Item# 69009 NG

### STANDARD FEATURES

- 45,000 BTU's
- 3 Welded Stainless Steel Burners
- Single Piece Dual Lined Hood
- Piezo igniters/ Zinc Control Knobs
- Solid Stainless Steel Grates
- Heavy Duty Thermometer
- Warming Rack 160 Sq. In.
- Built in trim kit
- Cooking Surface 556 Sq. In.
- Cutout- 25.75" x 20.5" x 9.5"

Specs. and more Components available online @ [www.BullBBQ.com](http://www.BullBBQ.com)

Specs. and more Components available online @ [www.BullBBQ.com](http://www.BullBBQ.com)



**COMPONENTS BUILT FOR YOUR SPECIFIC NEEDS**

Customizing your Bull Outdoor Kitchen is easy with more than 50 component upgrades. If you can dream it, we can build it. Bull Outdoor Kitchens aren't limited to just red hot flames.



**DOOR/PROPANE DRAWER COMBO-**  
Stainless Steel (Cutout - 31" x 20" x 16.375")  
*Item# 65784*



**DOOR/DRAWER COMBO 30"** Stainless Steel  
(Cutout - 31" x 20" x 20.75") *Item# 25876*  
**DOOR/DRAWER COMBO 38"** Stainless Steel  
(Cutout - 38.5" x 20" x 20.75") *Item# 55875*



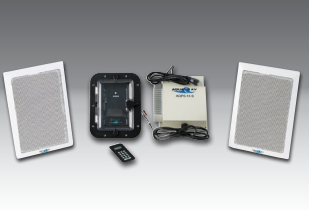
**SINGLE DOOR LOCK & KEY**  
Stainless Steel (Cutout - 23" x 15.75" x 2")  
*Item# 89970*



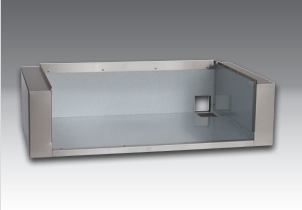
**SINGLE VENTED DOOR**  
Cutout - 15.75" x 20" x 2"  
*Item# 89977*



**BOTTLE OPENER & CATCH**  
*Item# 66006*



**BLUE TOOTH MP3 PLAYER with SPEAKERS**  
*Speakers available in White or Brown*  
*Item# 16621*



**INSULATED GRILL JACKET - 30"**  
*Item# 47017* Cutout - 38.25" x 22.125" x 9"  
**INSULATED GRILL JACKET - 38"**  
*Item# 47018* Cutout - 45.75" x 22.125" x 9"



**GRILL FINISHING FRAME - Stainless Steel**  
**30"** *Item# 49328*  
**38"** *Item# 58726*  
**47"** *Item# 74327*



**SINGLE DRAWER-**Stainless Steel  
(Cutout - 23.25" x 4" x 20.75")  
*Item# 09970*



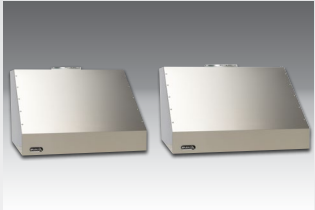
**DOUBLE DRAWER-**Stainless Steel  
(Cutout - 12.75" x 19.5" x 20.75")  
*Item# 56985*



**PULL OUT TRASH DRAWER -** Stainless Steel  
(Cutout - 18.25" x 25.25" x 16")  
*Item# 56925*



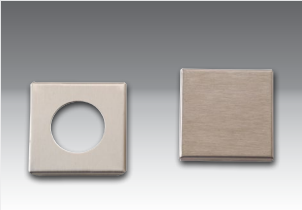
**18" BAR CENTER**  
(17.125" x 9.75" x 22.75")  
*Item# 85624*



**30" BAR CENTER**  
(29" x 9.75" x 22.75")  
*Item# 97623*



**VENT HOOD-TWIN FAN -** Stainless Steel  
36"W x 32" D *Item# 66009 - 30" Grills*  
42"W x 32" D *Item# 66098 - 38" Grills*



**PAPER TOWEL DISPENSER**  
Stainless Steel (Cutout - 9" x 14" x 11.5")  
*Item# 73624*



**UMBRELLA HOLE -** Stainless Steel  
*Item# 16624*  
**COVER/PLUG**  
*Item# 16625*



**PROPANE TANK HOLDER MOUNT**  
*Item# 16674*



**WARMING DRAWER-**Stainless Steel  
(Cutout - 28.5" x 10" x 20.25")  
*Item# 85747*



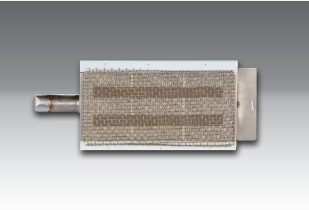
**PROPANE DRAWER-**Stainless Steel  
(Cutout - 14.75" x 19.75" x 16.5")  
*Item# 56825*



**LARGE SINGLE DRAWER-**Stainless Steel  
(Cutout - 25.25" x 10.75" x 24")  
*Item# 09980*



**SINGLE SIDE BURNER -** Stainless Steel  
*Item# 60008 (LP) - 60009 (NG)*  
(Cutout - 11.25" x 17.5" x 3.25")



**DOUBLE SIDE BURNER -** Stainless Steel  
*Item# 60088 (LP) - 60099 (NG)*  
(Cutout - 22.375" x 17.125" x 2.5")



**POWER BURNER - W/COVER**  
(Cutout - 21.25" x 21" x 9.5")  
*Item LP #96000 - NG #96001*



**SEARING BURNER**  
*7 Burner/Angus/Brahma Item# 20505*  
*Lonestar Item# 20506*



**CART & GRILL HEAD COVERS**  
*Grill covers & specs available online*



**PREMIUM REFRIGERATOR-**Outdoor  
Rated *Item# 13700*  
(Cutout - 24.25" x 33" x 23.5")



**REFRIGERATOR-**Stainless Steel  
*Item# 11001*  
(Cutout - 20.5" x 33" x 20.75")



**SEATING STATION - W/COVER**  
(Cutout - 12.125" x 20.5" x 9.5  
*Item# 94008 (LP) - Item# 94009 (NG)*



**DOUBLE SIDE BURNER - SLIDE-IN W/COVER**  
(Cutout - 12.125" x 20.5" x 9.5  
*Item# 30008 (LP) - Item# 30009 (NG)*



**SEARING STATION - W/COVER**  
(Cutout - 12.125" x 20.5" x 9.5  
*Item# 94008 (LP) - Item# 94009 (NG)*



**SIDEKICK GRILL CART SIDE BURNER**  
Fits all 24", 30" & 38" Grill Carts  
*Item LP #60010*



**ICE CHEST-**Stainless Steel  
(Cutout - 14.25" x 20.5" x 15.5")  
*Item# 00002*

**VERTICAL DOOR-**Stainless Steel  
(Cutout - 15.75" x 20" x 2")

**DOUBLE DOOR 30"-** Stainless Steel  
(Cutout - 31" x 20" x 2.25") *Item# 33568*  
**DOUBLE DOOR 38"-** Stainless Steel  
(Cutout - 38.5" x 20" x 2.25") *Item# 34000*

**PANTRY INSERT DOOR/DRAWER COMBO**  
*Item# 89973 - 30"*

**PANTRY INSERT DOUBLE DOOR 30" - 38"**  
*Item# 74000 - 30", Item# 74100 - 38"*

**STAINLESS STEEL SINK & FAUCET**  
Sm.-(Cutout - 14.25" x 14.25" x 7.625")  
Lg.-(Cutout - 18.125" x 16.125" x 7.875")  
Sm. *Item# 12389* | Lg. *Item# 12391*

**FIRE PIT BURNER KITS & COVERS**  
10" Sq. Ring Burner kit - *Item# 86538*  
10" Sq. Ring Cover (ONLY) - *Item# 86539*  
30" Straight Burner kit - *Item# 16622*  
30" Straight Cover (ONLY) - *Item# 16623*