



**POOLFORM**  
BY CARDINAL SYSTEMS, INC.

# Installation Instructions

**Before you begin, please be sure you have all the required materials as listed below.**

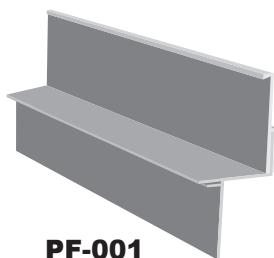
Items Required	Part No.	Packaging	Notes
Poolform - Straight AND/OR	PF-001	8pcs./case, 64 linear ft.	Includes form base and form back
Poolform - Bendable	BPF-001	8pcs./case, 64 linear ft.	Includes form base and form back
Form Liner	Various	8pcs./case, 64 linear ft.	Part number varies per style
Extractor Tool	PET-001	1	For safe removal of forms
White Vinyl Tape	WVT-250	2.5" x 180' roll	Required for bendable forms
Liner Track	HZ or HZ Caplock	Varies	For <b>VINYL LINER</b> Pools
Receiver Track - Straight	RT-001	16pcs./case, 128 linear ft.	For <b>CONCRETE</b> and <b>FIBERGLASS</b> Pools
Receiver Track - Bendable	BRT-001	16pcs./case, 128 linear ft.	For <b>CONCRETE</b> and <b>FIBERGLASS</b> Pools

Recommended Accessories	Part No.	Packaging	Notes
Z -Release 1 gallon	ZR-004	1 gallon container	Liquid release for easy removal of form liner (Powder release may be substituted)
Z -Release 5 gallons	ZR-020	5 gallon container	Liquid release for easy removal of form liner (Powder release may be substituted)
2" Double-sided Polyester Tape	PMT-200	2" x108' roll	Required for Fiberglass Application
1" Construction Screws	CSC-010	200 pieces - 5/32" drill bit included	1" x #10 panhead

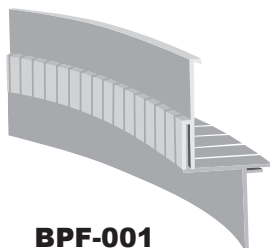
## Tools Required

- Rubber Mallet
- Concrete Pencil Vibrator
- Hacksaw - Recommended for trimming Poolform and form liner fit.

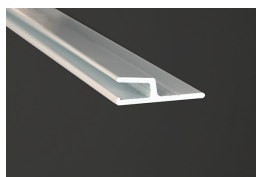
## Items Required



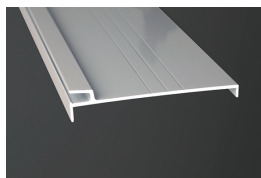
**PF-001**



**BPF-001**



**HZ**



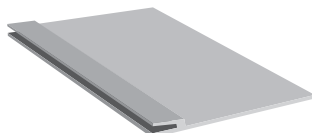
**HZ CAP**



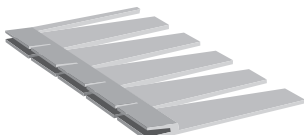
**PET-001**



**WVT-250**



**RT-001**



**BRT-001**

**NOT SHOWN-  
The various  
form liner**

# INSTALLATION OF SYSTEM

## STEP 1

Insert form base into the liner track or receiver track completely around the pool. Be sure to slide the form base inside and on top of the track, not underneath it. (See **Photo 1**) As you insert each 8'-section, tap the form base with a rubber mallet into the liner track, at the corner even with the liner track (See **Photo 2**), to insure a secure fit. Leave about  $\frac{1}{8}$ " to  $\frac{1}{4}$ " gap between each section to allow for expansion.

**NOTE:** Shown to the right is for Vinyl Liner pools. For Gunite and Fiberglass, please see page 4.



Photo 1

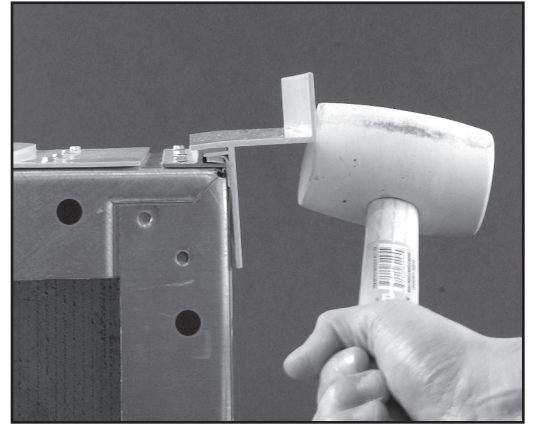


Photo 2

## STEP 2

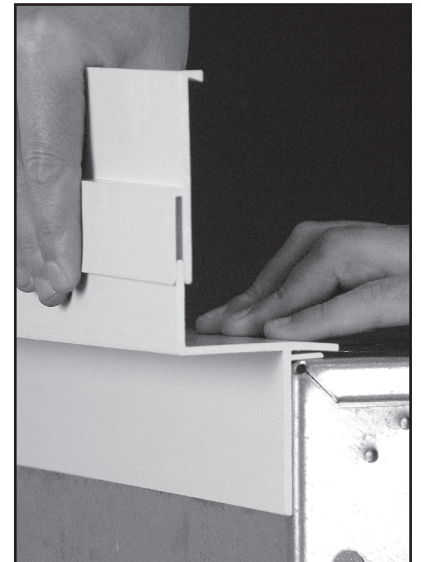
Using the white vinyl tape (WVT-250), tape the form base to prevent seepage of concrete during the pour. For straight pieces, tape the joints around the perimeter. For bendable pieces, tape the entire base perimeter.



**NOTE:** Do NOT use Duct Tape as this will stick to the form which will result in difficulty removing the form.

## STEP 3

Insert form back over the form base by hand. Do not push form back completely to the bottom of the form base at this point. (See *Photo to the right*) Leave about  $\frac{1}{8}$ " to  $\frac{1}{4}$ " gap between each section to allow for expansion. It is recommended to stagger the base and back gaps so the openings are NOT aligned.



## STEP 4

Insert form liner into form back around the perimeter. Notch faces up and away from pour side, fitting into the top of form back. (See **Photo 3**) Press form back down, locking liner into place. (See **Photo 4**)

**NOTE:** If the pour will occur the following day, it is recommend to leave the space open for the last form liner to allow for expansion and contraction overnight. Install the last liner the day of the pour.

**NOTE:** If a textured profile is trimmed, it may create an uneven joint. Plumber's Putty is recommended to touch up the joint to even the texture.



Photo 3



Photo 4

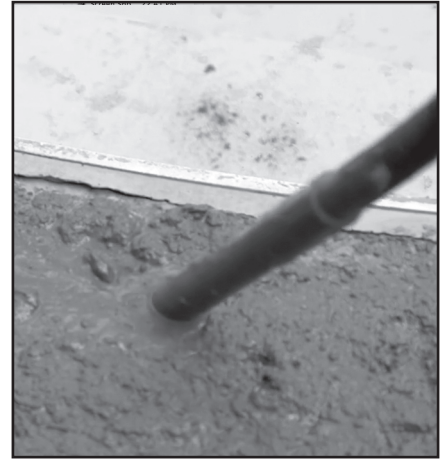
## POURING THE CONCRETE

### STEP 5

Fifteen minutes before the pour, use a **release agent** per manufacturer's instructions, covering the complete form liner around the perimeter. This makes the removal process easy and is required for the proper care and maintenance of the forms. Cardinal Systems' Z Release (ZR-004 or ZR-020) is recommended.

### STEP 6

During the pour, use the concrete pencil vibrator. Run the vibrator approximately 1" - 2" away from the edge of the form liner around the entire pool. Make sure the vibrator tip is submerged to the full depth of the concrete.



## REMOVAL OF THE FORM SYSTEM

**NOTE:** Forms are **NOT** to be removed until the concrete has completely set.

### STEP 7

Remove form back around the entire pool by pulling it straight up, completely separating it from the form base. Move pieces to clean-up area.



### CAUTION!!!

Use extreme caution when inserting and using the extractor tool and removing the form base. Proper use of the extractor tool will not tear or pinch the vinyl liner.

Cardinal systems will not be responsible for any damages to the vinyl liner due to misuse of the extractor tool on the removable form base.

### STEP 8

Use the Extractor Tool (PET-001) to remove the form base and form liner. The tool has a rubber-cushioned end to prevent damage to the vinyl liner. **CAREFULLY** insert the Extractor Tool under the face of the form base. (See *Photo 5*) Make sure the tool is inserted **COMPLETELY** to the top of the form base. Push the tool handle away from the deck. (See *Photo 6*) This will separate the form base from the liner track or receiver track. Continue this process for each form base section around the perimeter of the pool.

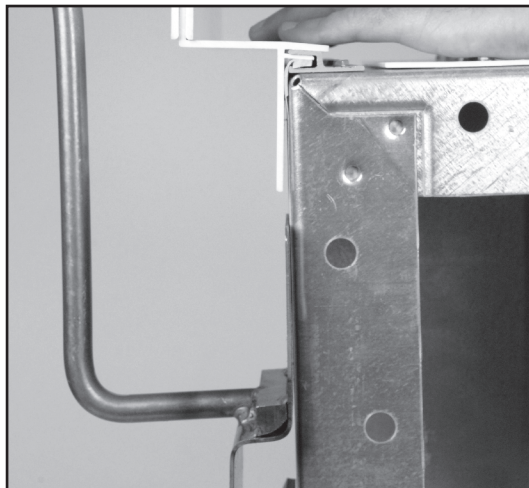


Photo 5

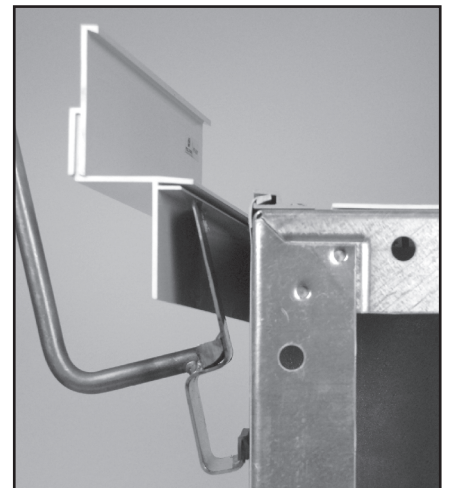


Photo 6



## CLEANING OF THE FORM SYSTEM

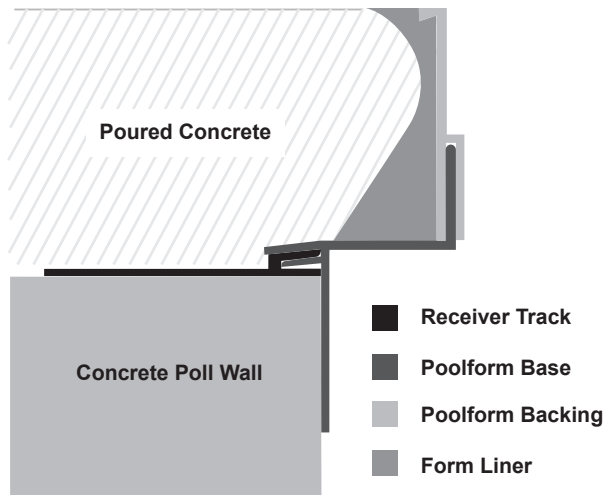
### STEP 9

Pull the tape off and clean any remaining concrete off the forms. Rinse the form liners of any remaining residue. After cleaning store in a clean, dry area for the next use. Use proper care when cleaning and you will extend the lifespan of the form system and get many uses from it.



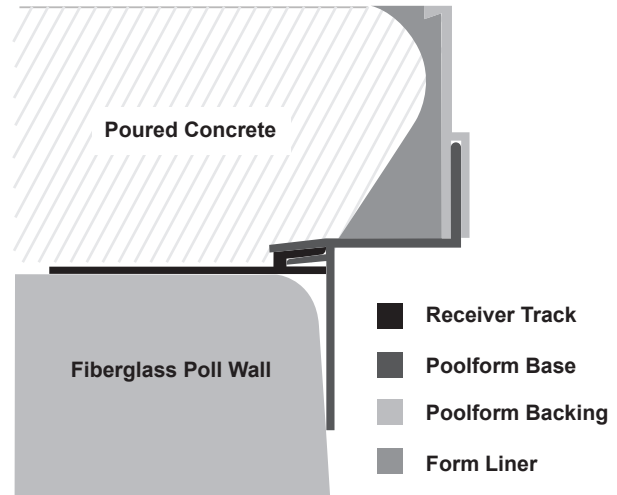
### PROPER INSTALLATION FOR CONCRETE OR GUNITE POOL

Receiver track should be mounted flush to edge of pool wall. Make sure the Z Poolform base is fully inserted into the receiver track as shown.



### PROPER INSTALLATION FOR FIBERGLASS POOL

Receiver track should be mounted in a position that leaves enough room for Poolform to attach plumb. A jig can be made with a small piece of Poolform inserted into receiver track (see video for details). Make sure the Z Poolform base is fully inserted into the receiver track as shown.



**NOTE:** Installation for Vinyl Liner Pool will look similar to the diagrams above for a concrete pool except the Poolform will plug into the already existing liner track.

THE MANUFACTURER (CARDINAL SYSTEMS, INC.) OFFERS THIS PRODUCT AND INFORMATION IN GOOD FAITH, BUT WITHOUT GUARANTEE EITHER EXPRESSED OR IMPLIED, AS CONDITIONS AND METHODS OF USE OF OUR PRODUCT ARE BEYOND OUR CONTROL



To view an installation video of the Z Poolform<sup>TM</sup> by Cardinal Systems, Inc., scan the QR Code or go to our website at [cardinalsystemsinc.com/products/instructional-videos](http://cardinalsystemsinc.com/products/instructional-videos)

**Cardinal Systems, Inc.**  
**250 Route 61 South**  
**Schuylkill Haven, PA 17972**

**570.385.4733**  
**[info@cardinalsystemsinc.com](mailto:info@cardinalsystemsinc.com)**  
**[cardinalsystemsinc.com](http://cardinalsystemsinc.com)**