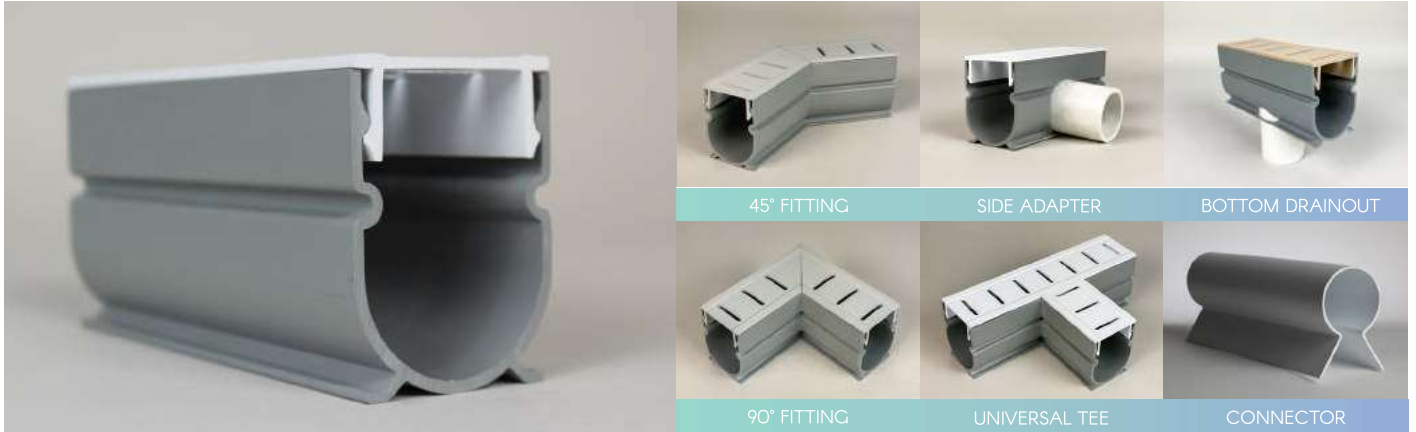


QP-6972: 2" REMOVABLE TOP DECK DRAIN



2" REMOVABLE TOP DRAIN MODEL NUMBERS

Available Colors: white, gray, and tan (W,G,T)

ITEM NO.	LENGTH	PACKAGING
QP-6972W	10 ft.	80 ft./case, eight 10-foot pcs.
QP-6972G	10 ft.	80 ft./case, eight 10-foot pcs.
QP-6972T	10 ft.	80 ft./case, eight 10-foot pcs.
Includes four adapters in a box of eight.		

2" REMOVABLE TOP DRAIN FITTINGS

Available Colors: white, gray, and tan (W,G,T)

ITEM NO.	STYLE FITTING	PER CASE
QP-6973 (W,G,T)	45°	2
QP-6974 (W,G,T)	90°	2
QP-6978 (W,G,T)	Side Adapter	2
QP-6977 (W,G,T)	Bottom Drainout	2
QP-6975 (W,G,T)	Universal Tee	2
QP-6976*	End Cap	4
QP-6979*	End Drain Out	1 pc.
QP-5981-1*	Connectors	1 pc.

*Available in WHITE ONLY

Not shown: End Cap (QP-5181-1 & 5182-1).

BENEFITS OF 2" REMOVABLE TOP DECK DRAIN SYSTEM

- Heavy wall, bondable, drain system and all components are made from rigid PVC, proven in years of outdoor applications with lasting beauty.
- Adapts to all standard 1½" plastic fittings.
- Joints bond together like PVC pipe, with PVC connectors supplied.
- Removable top for easy clean out.
- Drain offers heavier walls than existing systems, as well as greater rigidity and durability.
- Strong water volume capacity.
- Taped top for extra strength when peeling off after concrete is in place.
- Smooth concave top surface provides better drainage and minimizes collection of dirt and debris.

