

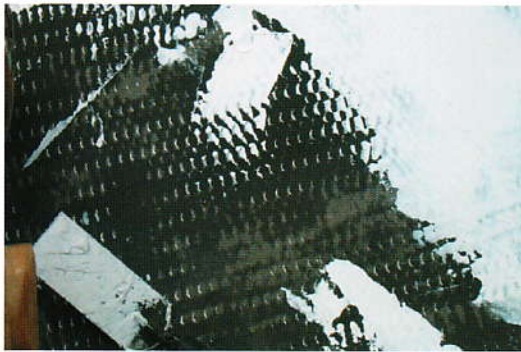


MIRACOTE[®]

REPAIR PRODUCTS



*Spending Money On
Unsightly Concrete Repairs?*



Do it Right!



*Concrete That Looks
Better Than When
It Was New!*



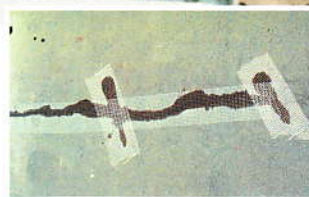
SCIENTIFICALLY SUPERIOR TECHNOLOGIES

Scientifically Superior TECHNOLOGIES

Scientifically superior state-of-the-art polymer modified cementitious technologies are the backbone of MIRACOTE® Repair Mortars and Underlayments. The physical and mechanical performance properties demonstrate unrivaled durability; compressive, tensile, flexural and adhesive strengths.

Contractors have stated that MIRACOTE Repair Mortars and Underlayments are the best user friendly products available. These fast-setting systems can be applied over dry or wet concrete and at temperatures ranging from 50°F (10°C) to 90°F (32°C). All of the systems are water and water-borne chloride penetration resistant. (See selector guide on back page.)

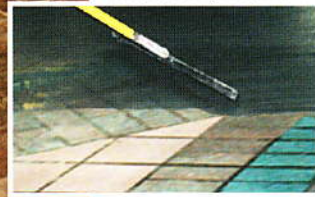
VOC compliance is not an issue, the entire MIRACOTE Product Line complies with all North American government, state, province and local regulations and the products in this brochure are virtually odorless during installation and cure.



MIRACOTE LIQUID POLYMER PRODUCTS



Liquid polymer based repair mortars and smoothing/leveling underlayment products are trowel, screed or squeegee applied. They are ideal for concrete restoration and resurfacing over properly prepared, clean, sound and durable spalled, cracked and deteriorated concrete subjected to heavy-duty traffic; or as an underlayment substrate for microtoppings, resinous systems, carpet, linoleum, resilient tile or ceramic tile.



MIRACOTE RM I (Repair Mortar or Underlayment)

- Rigid trowel applied
- Application thickness, featheredge to 3" (76mm)
- Suitable for pitching and sloping
- Extendible with pea gravel for thicker fills

MIRACOTE RM II (Repair Mortar or Underlayment)

- Flexible squeegee applied
- Suitable for pumping
- Application thickness, 1/2" (13mm) or less
- Shrinkage compensating formulation

MIRACOTE RM III (Repair Mortar or Underlayment)

- Very flexible trowel applied
- Application thickness, featheredge to 1" (25mm)
- Suitable for pitching and sloping
- Suitable for applications over wood
- Extendible with pea gravel for thicker fills

MIRACOTE O-V (Overhead-Vertical Patching Mortar)

- Rigid hawk and trowel or gloved hand applied mortar
- Adheres to overhead and vertical surfaces without forms
- Lightweight and sag-resistant
- Large void filling

