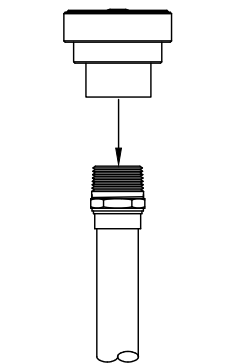


TABLE OF CONTENTS

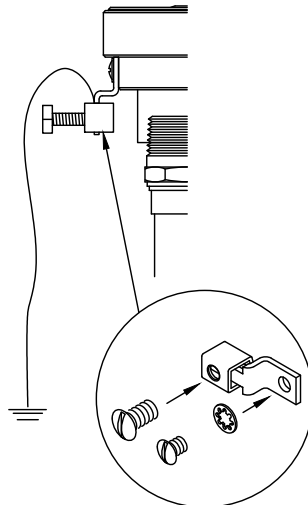
INSTALLTION	1	CHANGING NOZZLES	2
DeckJet installation 1.0	1	Clear stream jet 2.0	2
Inlet 1.1	1	Removing face ring 2.1	2
Grounding 1.2	1	O-ring 2.2	2
Protective cover 1.3	1	Swivel ball 2.3	2
		Replacing face ring 2.4	2
		Tristream jet 3.0	3
		Removing face ring 3.1	3
		O-ring 3.2	3
		Swivel ball 3.3	3
		Replacing face ring 3.4	3
		Crown jet 4.0	4
		Removing jet lid 4.1	4
		O-ring 4.2	4
		Replacing jet lid 4.3	4

INSTALLATION

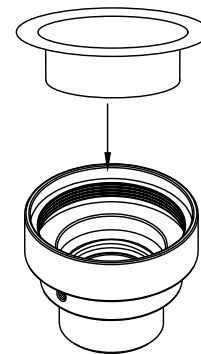
1.0 DeckJet installation:



- 1.1 Screw the DeckJet body securely onto the water supply line.



- 1.2 Connect the grounding wire.



- 1.3 Place blue plastic protective cover into DeckJet body.

Note: To help prevent debris in the water feature system, please be sure to use the blue plastic protective cover that is included with the DeckJet Kit before pouring cement or any type of foundation.

Note: Please follow any local regulations during the installation process of the DeckJet Kit.

	PROPRIETARY AND CONFIDENTIAL THE INFORMATION CONTAINED IN THIS DRAWING IS THE SOLE PROPERTY OF CRYSTAL FOUNTAINS INC. ANY REPRODUCTION IN PART OR AS A WHOLE WITHOUT THE WRITTEN PERMISSION OF CRYSTAL FOUNTAINS INC. IS PROHIBITED.		CUT SHEET WDK100-D103-REV0	PAGE 1 OF 4
	www.crystalfountains.com  TEL. 1-905.660.6674 FAX. 1-905.660.6916	DeckJet installation instructions	SERIES WDK100	REV. 0 DEC 2016

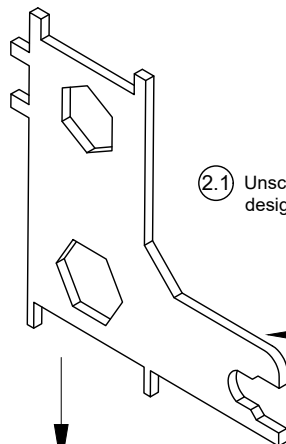
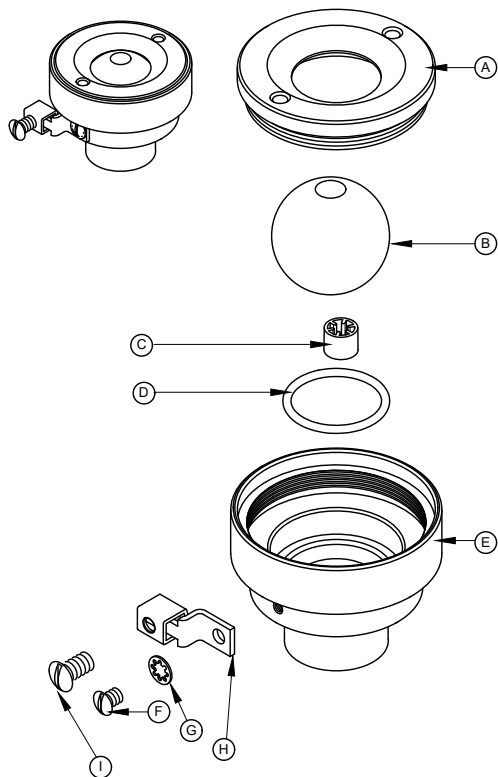
Due to technical progress, all designs, specifications, data sheets and components are subject to change without notice. All product information contained in this cut sheet is for information only. Please consult our web site for up to date engineering drawings. Certificates of conformance issued if required.

CHANGING NOZZLES

Change the DeckJet Kit effects quick and easily by following these few simple steps.

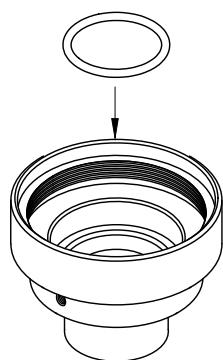
2.0 CLEAR STREAM JET

ITEM	PART NO.	DESCRIPTION	QTY.
A	NLD C20	NLD FACE RING	1
B	NLD C30	NLD SWIVEL BALL	1
C	NLD C50	NLD FLOW STRAIGHTENER	1
D	OR0122	O-RING	1
E	NLD100C30	1" NLD BODY, FEMALE INLET	1
F	FA0550	BRASS SCREW, 10-24 x 1/4, RD. HD.	1
G	FA6030	WASHER, TOOTHED, BRASS	1
H	E SLU-035	GROUND LUG	1
I	FA0280	GROUNDING SCREW	1

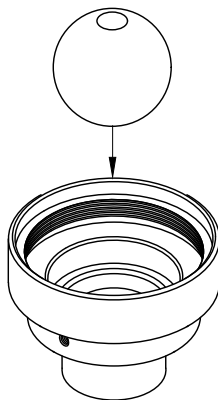


2.1 Unscrew the face ring by using the specially designed security key to remove it.

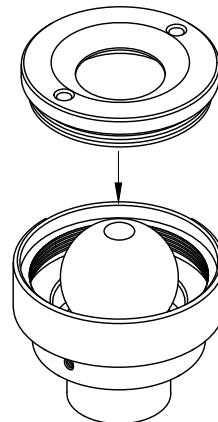
WMF082



2.2 Place the o-ring first in the DeckJet body.



2.3 Next insert the swivel ball so that it's resting on the o-ring, be sure to place the opening that has the flow straightener downward against the o-ring.



2.4 Put the face ring back in place and then tighten with the security key.



PROPRIETARY AND CONFIDENTIAL

THE INFORMATION CONTAINED IN THIS DRAWING IS THE SOLE PROPERTY OF CRYSTAL FOUNTAINS INC. ANY REPRODUCTION IN PART OR AS A WHOLE WITHOUT THE WRITTEN PERMISSION OF CRYSTAL FOUNTAINS INC. IS PROHIBITED.

www.crystalfountains.com

Crystal
where ideas flow™

TEL. 1-905.660.6674

FAX. 1-905.660.6916

DeckJet installation instructions

CUT SHEET
WDK100-D103-REV0

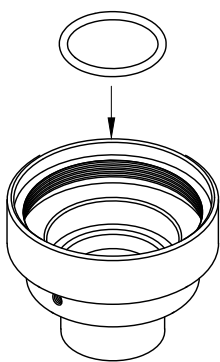
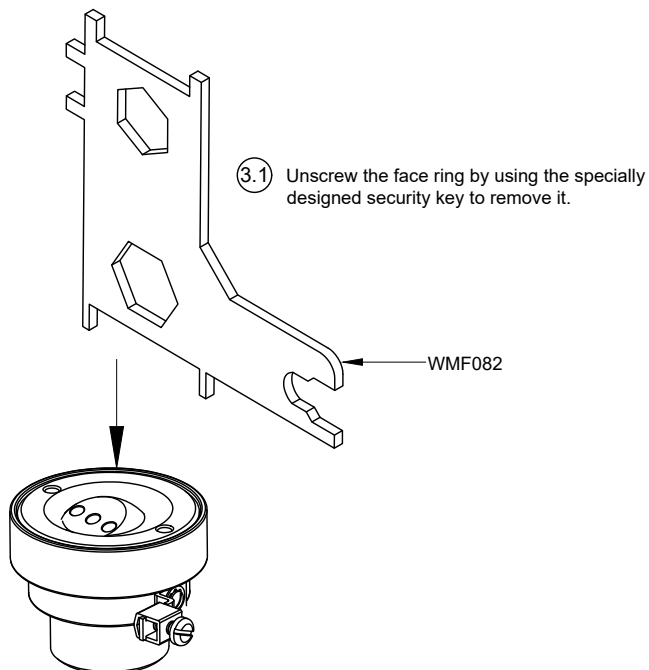
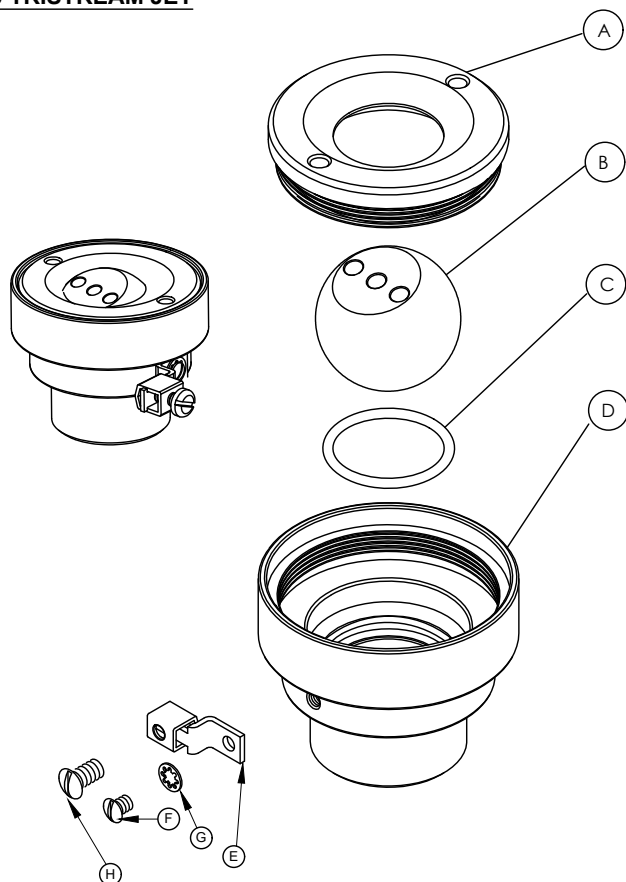
PAGE
2 OF 4

SERIES
WDK100

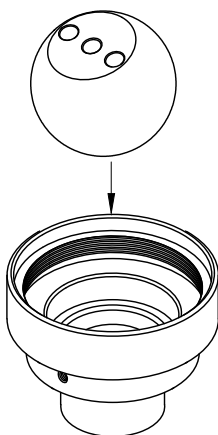
REV.
0
DEC 2016

3.0 TRISTREAM JET

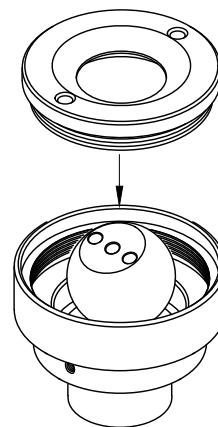
ITEM	PART NO.	DESCRIPTION	QTY.
A	NLD C20	NLD FACE RING	1
B	WMD115C100	TRISTREAM SWIVEL BALL	1
C	OR0122	O-RING	1
D	NLD100C30	1" NLD BODY, FEMALE INLET	1
E	E SLU-035	GROUND LUG	1
F	FA0550	BRASS SCREW, 10-24 x 1/4, RD. HD.	1
G	FA6030	WASHER, TOOTHED, BRASS	1
H	FA0280	GROUNDING SCREW	1



3.2 Place the o-ring first in the DeckJet body.



3.3 Next insert the tristream swivel ball so that it's resting on the o-ring, be sure to place the smaller faced opening with the mark downward against the o-ring.



3.4 Put the face ring back in place and then tighten with the security key.



PROPRIETARY AND CONFIDENTIAL

THE INFORMATION CONTAINED IN THIS DRAWING IS THE SOLE PROPERTY OF CRYSTAL FOUNTAINS INC. ANY REPRODUCTION IN PART OR AS A WHOLE WITHOUT THE WRITTEN PERMISSION OF CRYSTAL FOUNTAINS INC. IS PROHIBITED.

www.crystalfountains.com

Crystal
where ideas flow™

TEL. 1-905.660.6674

FAX. 1-905.660.6916

DeckJet installation instructions

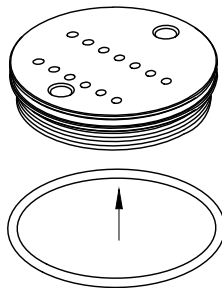
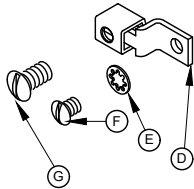
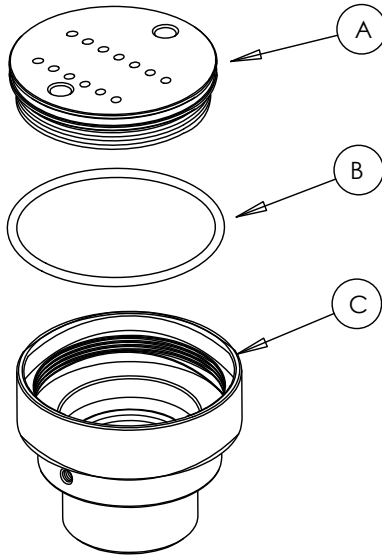
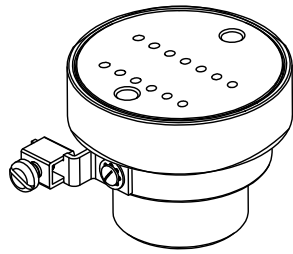
CUT SHEET
WDK100-D103-REV0

PAGE
3 OF 4

SERIES
WDK100

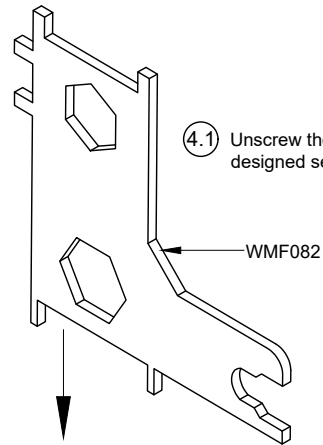
REV.
0
DEC 2016

4.0 CROWN JET

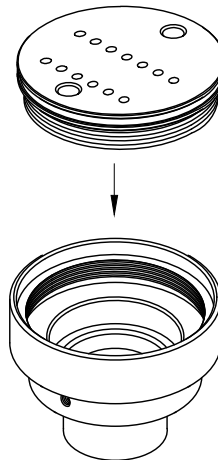
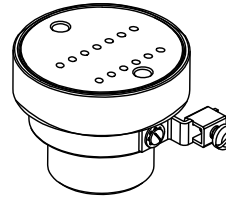


4.2 Place the o-ring into the o-ring groove on the jet lid, if there is none present.

ITEM NO.	PartNumber	DESCRIPTION	QTY.
A	WMF076C300	JET LID NLF076/WMF079	1
B	OR0136	2 ID X 2-3/16 OD X 3/32 W	1
C	NLD100C30	JET BODY 1 IN FEMALE	1
D	E SLU-035	GROUND LUG BASE AND HOLDER	1
E	FA6030	WASHER TOOTH #10 SILICON BRONZE	1
F	FA0550	SCW RD/PAN SLOT #10-24 x 1/4 IN BRASS	1
G	FA0280	SCREW PAN PHILIPS 12-24 X 3/8 IN SS316	1



4.1 Unscrew the jet lid by using the specially designed security key to remove it.



4.3 Put the face ring back in place and then tighten with the security key.



PROPRIETARY AND CONFIDENTIAL

THE INFORMATION CONTAINED IN THIS DRAWING IS THE SOLE PROPERTY OF CRYSTAL FOUNTAINS INC. ANY REPRODUCTION IN PART OR AS A WHOLE WITHOUT THE WRITTEN PERMISSION OF CRYSTAL FOUNTAINS INC. IS PROHIBITED.

CUT SHEET
WDK100-D103-REV0

PAGE
4 OF 4

www.crystalfountains.com
Crystal
where ideas flow™

TEL. 1-905.660.6674

FAX. 1-905.660.6916

DeckJet installation instructions

SERIES
WDK100

REV.
0
DEC 2016