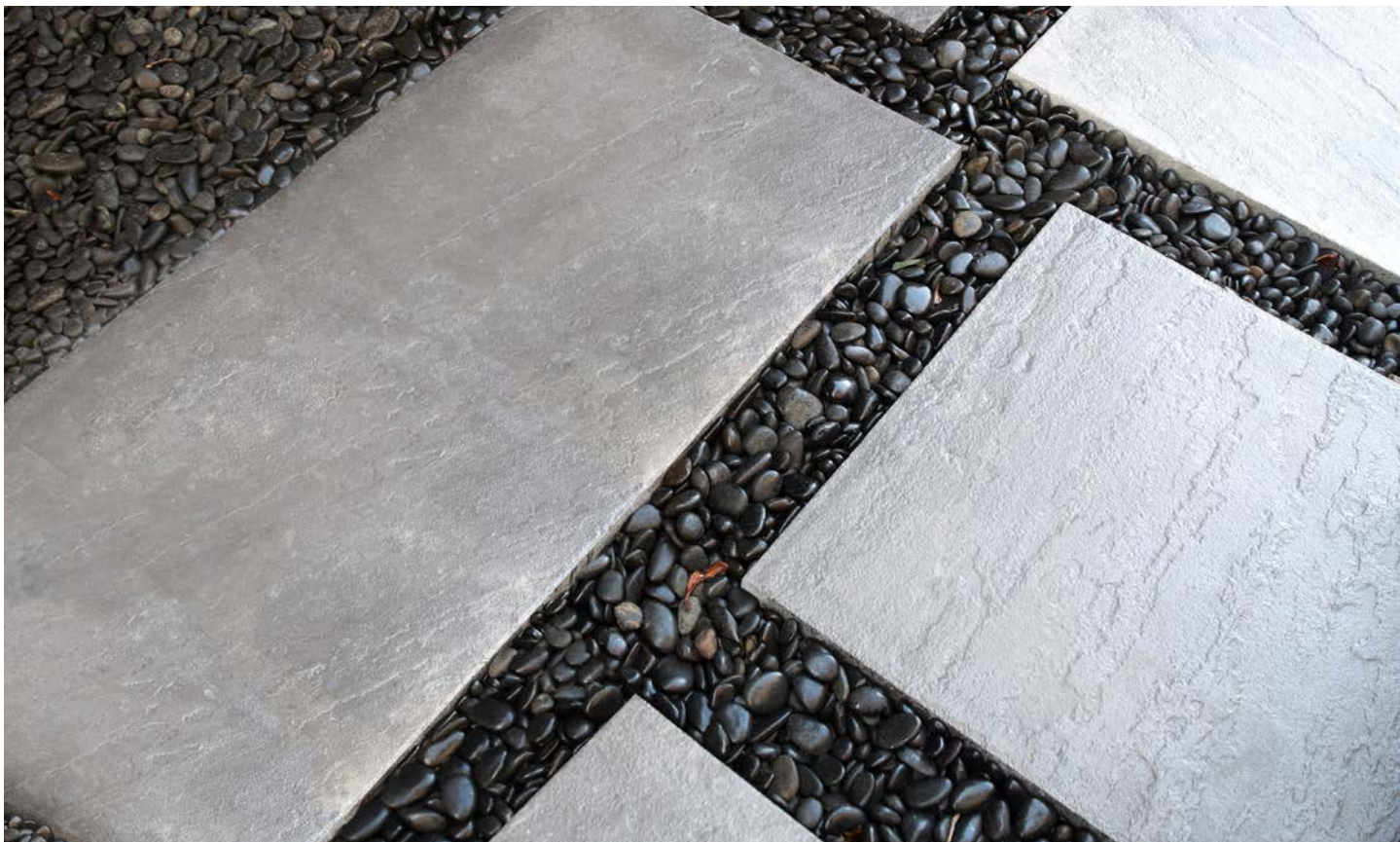


**CASTOHN**<sup>®</sup>  
LARGE PAVER SERIES



WEST REGION

**MOUNTAIN SLATE  
COLLECTION**



**CASTOHN**<sup>®</sup> ORIGINAL

For additional product information, please visit [castohn.com](http://castohn.com)





12" x 36"

12" x 48"

12" x 24"

24" x 36"

24" x 48"

24" x 24"

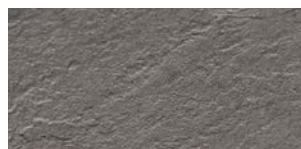
36" x 36"

18" x 36"

### Product Data

- 12" x 24" x 2-1/2" - 2 square feet - 61 pounds
- 12" x 36" x 2-1/2" - 3 square feet - 92 pounds
- 12" x 48" x 2-1/2" - 4 square feet - 122 pounds
- 18" x 36" x 2-1/2" - 4.5 square feet - 132 pounds
- 24" x 24" x 2-1/2" - 4 square feet - 122 pounds
- 24" x 36" x 2-1/2" - 6 square feet - 184 pounds
- 24" x 48" x 2-1/2" - 8 square feet - 245 pounds
- 36" x 36" x 2-1/2" - 9 square feet - 277 pounds
- Dimensional Tolerance L & W  $\pm 3/16"$  & H  $\pm 1/8"$
- Minimum of 1/2" joints required

### Available Colors\* - West Region



**Charcoal**

\*colors may vary,  
see actual pallets



**Natural Gray**

### Features

- Authentic, natural slate texture
- Consistent 2-1/2" thickness
- Uniform thickness and accurate dimensions equal fast installations and beautiful end results
- Natural appearance due to slight color variations
- Eased edges

### Typical Installation

