



# POWERCLEAN ULTRA & ECON IN-LINE CHEMICAL FEEDERS

CMP# 25280-100, 25280-110, 25280-400, 25280-410, 25280-120

# POWERclean

## Features:

- No special venting required.
- Completely enclosed: no escaping gases.
- Positive external no-clog control valve.
- No equipment damage.
- Feeds sanitizer directly.
- All parts replaceable.

To prevent over chlorination during use, completely close the control valve and the built in check valve will prevent chemical from being fed into the pool or spa.

Read all information before proceeding with any installation. The information will help you install your feeder properly and avoid problems. IF YOUR POOL OR SPA HAS COPPER PLUMBING DO NOT INSTALL. This will damage the feeder. NOTE: If heaters are used, a Fireman's Switch or equivalent must be installed to prevent possible damage and improper operation of check valve and other equipment subject to heat damage.

## INSTALLATION INSTRUCTIONS:

NOTE: Feeder should be installed above the water level.

Make sure all pumps and timer switches are OFF. The feeder is designed for permanent installation in the return line of the pool or spa and must always be installed after the heater, pool cleaner, valves, etc. If there is no heater then install the feeder after the filter and all other equipment. Note: Heater and other equipment may be damaged by highly chlorinated water.

If the pool/spa is plumbed with 2" PVC pipe, make sure the pump, heater, and filter all have 2" inlet and outlet fittings. Glue 2" PVC pipe into inlet union. Continue with 2" PVC pipe on the outlet side.

When plumbing a pool/spa combo where the plumbing and equipment is 2" and the feeder is installed on the pool return line after the diverter valve with a portion of the water going to the spa, install a minimum section of 6" x 1.5" PVC pipe directly into the inlet side of the feeder using the 1.5" unions. Continue with 2" PVC pipe on the outlet side of the feeder. This will compensate for the water being diverted.

When plumbing 90 degree elbows directly into the feeder inlet, it may cause turbulence inside the elbow which prevents water from entering the feeder.

A minimum of 6" PVC pipe should be installed between the elbow and the inlet of the feeder.

When using 1.5" PVC pipe, follow instructions above but glue into 1.5" unions, making sure arrows on feeder point the direction of the water flow returning to the pool/spa.

Use only PVC cement. Follow the directions on the cement label. Allow to dry.

## OPERATING INSTRUCTIONS:

Fill the feeder with water making sure to bleed out any entrapped air in any of the lines. To ensure maximum effectiveness, before starting the feeder, the pool should be properly conditioned and the residual should be 1.0 to 1.5 ppm. Consult your local dealer for water conditioning information in your area.

1. Remove cap of feeder and fill with proper size tablets. (For pools: 1" or 3" diameter tablets. For spas: 1" tablets)
2. If more chemical and a faster dissolve rate is desired, install the chemical feeder tube (#9 in diagram on page 2). The elbow of the feeder tube will fit into the outlet hole near the inside bottom of unit (See diagram on page 2). If less

Your CMP POWERclean Feeder is the best automatic feeder that you can buy, however it can be dangerous, if instructions are not followed completely. Please follow the instructions exactly and note all warnings. Your safety and the protection of your system are at stake!!

chemical is desired, remove the chemical feeder tuber.

3. Fill with water.
4. Replace cap making sure o-ring is clean, lubricated, and in place.
5. Turn on pump and timer switches for a minimum of 6 to 8 hours. The water level inside chlorinator will be 3 – 5 inches under normal running conditions.
6. Adjust the control valve (clockwise for more chemical; counter clockwise for less chemical) according to the size of the pool/spa. Use a test kit to determine the chemical residual. It is recommended that the chemical residual be checked daily for the first five days. Note: Hot weather, high water temperature, and increased use will cause the pool/spa to use more chemical. Increase the feed rate a few days in advance when possible. The valve settings may require changes depending on the conditions.

## RECHARGING THE FEEDER:

1. Turn control valve to the closed position (counter clockwise). SHUT OFF PUMP.
2. Wait one minute allowing the water and fumes to drain from the feeder.
3. Leave the control valve closed and turn on the pump. (The check valve will prevent water from entering the feeder).
4. Remove cap and fill with tablets.
5. Replace cap making sure o-ring is clean, lubricated, and in place. (Hand tighten only).
6. Open control valve (clockwise) to original setting.

## WINTERIZING THE FEEDER:

This chlorinator has a drain plug located on the bottom for easy draining of the unit. Follow procedures of normal winterizing to winterize.

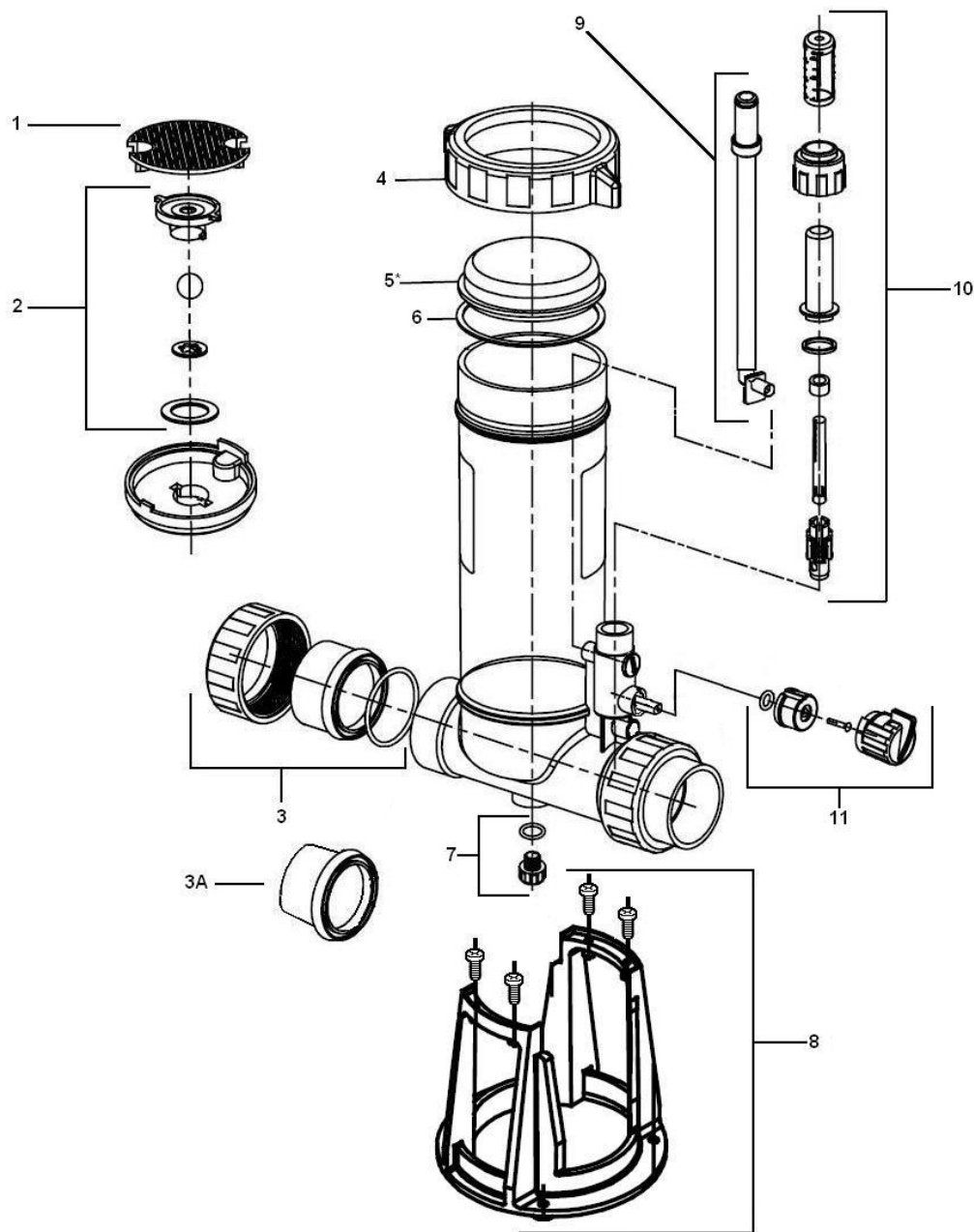
## SPECIAL INSTRUCTIONS:

1. If the feeder does not provide enough chemical residual when using 3" tablets, switch to 1" tablets. Smaller tablets erode faster producing more residual.
2. If the glass lid becomes cloudy, turn off the feeder using the shut off instructions above (RECHARGING FEEDER). Remove the lid and wipe clean. If it remains cloudy, it will clear itself if left exposed to sunlight and fresh air. DO NOT leave chlorinator open without the lid installed. If the lid must be left off to clear up, a replacement must be installed.
3. The grate (#1 in diagram on page 2) is designed to be removed easily when chlorine is gummed up inside the unit at the bottom of the chlorinator. The chlorine residue needs to be dislodged or it may affect the performance if left unattended. The grate helps keep pieces of the tablets from gumming up the outlet. The grate may come out of its resting place when tablets are added to the chlorinator. Be sure to check its position after each recharging.

# WARNING



This feeder is designed to use only Trichlor-s-triazinetriene OR Bromine tablets- slow dissolving type. UNDER NO CIRCUMSTANCES MIX Trichlor or Bromine with Calcium Hydrochlorite, with other forms of concentrated chlorine or with other chemicals. FIRE AND/OR EXPLOSION MAY RESULT. NEVER use oils or grease to lubricate o-ring. Oil in contact with Trichlor OR Bromine may result in FIRE. Lubricate o-ring with approved silicone o-ring lubricant only. If you are not the original owner of this feeder, or not sure which chemical was used, be SAFE and flush thoroughly with fresh water. CAUTION SHOULD BE USED WHEN REMOVING CAP. DO NOT INHALE FUMES.



- 1) 25280-100-005 Grate
- 2) 25280-000-920 Check Valve Assembly
- 3) 21023-000-000 2" Union
- 3A) 21049-150-010 1.5" Union Tailpiece
- 4) 25280-100-001 Cover Nut
- 5) 25280-109-002 Clear Cover
- 5) 25280-100-002 White Cover
- 6) 26101-060-530 O-Ring; Cover
- 7) 25376-900-500 Drain plug w/ O-Ring
- 8) 25280-300-970 Base Assembly (available on 25280-400/410 only)
- 9) 25280-000-100 Chemical Feeder Tube
- 10) 25280-100-955 Flow Meter Assembly
- 11) 25280-100-930 Dial Assembly

BROMINE MAY BE SUBSTITUTED FOR TRICHLOR IN THIS FEEDER. DO NOT MIX.

CAUTION: Do not install feeder into copper plumbing. Pipe damage may occur. Never install feeder before the heater. Heater damage may occur.