



172 GPM SPA SUCTION

CMP# 25200-202-000



For Multiple Drain Use Only
172 GPM - Submerged
Life: 7 Years
Wall Only
25200-202

VGB-2008
COMPLIANT

Read and keep these instructions for future reference.

Always plumb and install all suction fittings according to all building codes that apply in your area.

WARNING: When using two or more suction fittings on a common suction line, suctions must be separated by a minimum of 3 ft or they must be located on two different planes (i.e., one on floor and one on the wall).

WARNING: DO NOT locate suction outlets on seating areas or on backrests for such seating areas.

The maximum flow rating for this suction fitting is 172 GPM. This suction fitting is designed for installation on side wall of portable spa and hot tubs in conjunction with at least one other suction fitting per pump. DO NOT adapt suction fitting to any pipe size smaller than ASTM 2" SCH 40 PVC. Suction fitting and fasteners should be observed for damage or tampering before each use. Missing, broken, or cracked suction fittings shall be replaced before use. Loose suction fittings shall be reattached or replaced before use. Mount suction fittings on the walls, in the foot wells of portable spas and hot tubs. Do not mount directly under seats. Follow all winterizing instructions and recommendations supplied by the spa manufacturer.

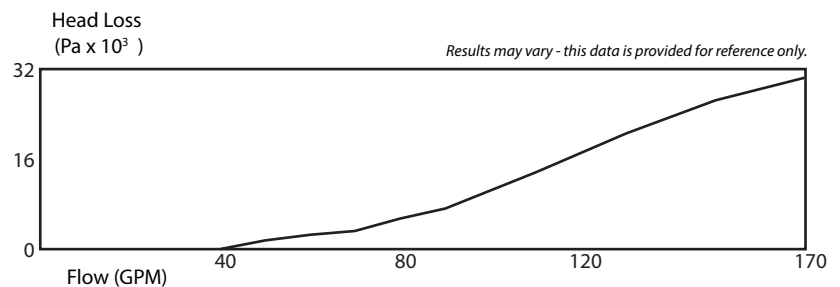
Tools Needed: Hole Saw, Torque Wrench, Phillips Head Screwdriver

INSTALLATION INSTRUCTIONS (WALL INSTALLATION ONLY)

1. Using hole saw, cut/drill the installation hole.
2. If optional gasket is used, gasket must be placed around threads of suction wall fitting at this time.
3. Place threads of wall fitting through hole from the inside (water side) of tub.
4. Install nut from dry side of tub onto the threads of the wall fitting.
5. Using torque wrench, torque nut to <44.0 ft. lbs. (60Nm)
6. Verify that the suction cover is properly tightened and secured with stainless steel screw.

INSTALLATION NOTES:

1. Mount suction outlets on the wall or floor. DO NOT locate suction outlets on seating areas or on backrests for seating areas.
2. Always use multiple suction outlets. DO NOT use with single drain applications. Use with single drain applications will void any and all warranties.
3. When using two or more suction fittings on a common suction line, suctions must be separated by a minimum of 3 ft or they must be located on two different planes (i.e. one on floor and one on the wall).
4. To reduce the risk of drowning from hair and body entrapment, install suction fittings with a marked flow rate in gallons per minute that exceeds the flow rate of your system by at least 25%. Increasing size of the pump may increase flow rate of suction beyond rated safety limits causing entrapment or death.
5. CMP drain covers are only certified for use with CMP sumps and frames. Do not mismatch with parts from other manufacturers.
6. If silicone is used on fitting, verify that silicone is compatible with ABS and PVC plastics.
7. DO NOT over-torque fitting. Excessive torque can cause premature failure of threads or damage to suction fitting increasing risk of entrapment.

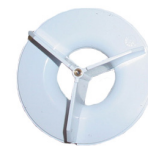


REPLACEMENT PARTS



25200-202-011

SUCTION COVER



2" Slip 25200-110-000
2.5" Slip 25200-010-000

WALL FITTING



25200-040-010

NUT



61000-050-012

SCREW

*Replace within 7 installed years or immediately upon evidence of degradation or damage.



DANGER

Hair or body parts blocking the spa or pool suctions may become trapped and held against the suction fitting. Keep hair and clothing a minimum of 12 inches from all suction fittings and drains at all times. Entrapment against the suction fittings can result in drowning or other severe injury. Never sit on or lean up against suction fittings.