

# LITHIPRO LP

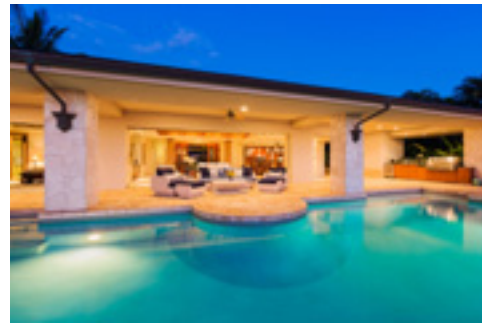
The Next Dimension in Concrete.



Densifies. Perfect for polishing. Strengthens concrete and greatly reduces dust.



Seals and protects stamped and poured driveways.



Prevents efflorescence and seals paver patios.

LithiPro LP is a premium, top-tier concrete densifier/sealer that safely enhances the performance, the look, and service life of concrete, pavers, stucco, and masonry surfaces.

LithiPro LP is a superior alternative to basic, form-building sealers because it won't lift or peel. One application of LithiPro LP is a permanent one.

LithiPro LP is formulated with a blend of surfactants that allow the chemistry to penetrate deep into surface, solidifying the free alkali that can migrate to the surface and form ugly efflorescence.

LithiPro LP is also safe. Where residue from other densifiers is considered a Hazmat and must be disposed of as such, there are no EPA regulatory issues to be concerned with.

In doing so, a densification of the concrete also occurs. The compressive strength of the surface can increase by as much as 30%, improving the service life and reducing the likelihood of staining and water damage.

Product Features	LithiPro LP
Requires HAZMAT disposal of residue/surplus	No
Excess residue creates possible bond break for coating	No
Pretreatment for coating systems	Yes
Seals concrete pores	Yes
Hardens and increases compressive strength of concrete	Yes
2" - 4" penetration	Yes
Permanent application	Yes
Stops efflorescence in concrete, pavers, and other masonry surfaces	Yes
Retards dusting	Yes
Prevents stains from oils and dirt	Yes
Seals surface of concrete and prevents water intrusion	Yes
Inhibits or prevents hydrostatic pressures	Yes
Low VOC, environmentally-friendly	Yes
Reduces spalling caused by freeze-thaw cycles	Yes

(OVER)

# LITHIPRO<sup>™</sup> LP

Take Your Concrete and Paver Surfaces to the Next Level.

One treatment of LithiPro LP stops efflorescence in its tracks, protects pavers and concrete surfaces from stains and moisture, and increases the compressive strength of concrete by as much as 30%.

LithiPro LP is a superior alternative to sealing because unlike a film-building sealer, LithiPro LP is a penetrating treatment that won't lift or peel. It deepens the color of the paver or concrete without leaving adding sheen to the surface. It lasts' for the life of the substrate.

LithiPro LP is a premium lithium-potassium (LP) densifier that can be used on a variety of substrates to protect against efflorescence and protect the substrate from stains and moisture damage.

Lithipro LP is different from other densifiers because it contains a proprietary blend of wetting agents that allow the chemistry to penetrate deeper into the substrate. This capability provides a superior level of protection against efflorescence and dusting.

**In terms of performance and ease of application, LithiPro LP is far superior to sodium silicate densifiers. Here's why:**

LithiPro LP is faster and easier to apply. LithiPro LP is sprayed on lightly, whereas a sodium silicate densifier must saturate the surface. LithiPro LP leaves no residue, whereas the EPA classifies sodium silicate as a hazmat, requiring residue to be disposed of as a hazmat material at the contractor's expense. Additionally, the white crystalline deposits that sodium silicates leave behind are very difficult to remove. Other than a possible dust from excess material, LithiPro LP leaves no residue. Using a superior product results in a better job for the customer and higher profits for the contractor.

**LithiPro LP is easy to apply. Follow these tips for a successful application:**

Allow new concrete to cure for at least 28 days.

The primary goal of the application is to apply to a clean, absorbent substrate. Therefore, do not apply to substrates that are dirty, frozen, or sealed. Allow wet concrete to dry. Prior to application, it is a good idea to lightly mist water in random areas of the substrate to test for absorbency.

Using a hand pump sprayer, apply a consistent, even coat of LithiPro LP to the surface. Apply at a rate of 500-600 square feet per gallon. Reapply LithiPro LP to areas that rapidly absorb the material and brush out (with soft bristle push broom) areas where the material accumulates. Excess residue (dust) should be removed with a stiff bristle broom or blower.

LithiPro LP is great for paver patios, concrete patios, garage floors, driveways, parking garages, walkways, pool surrounds. Works on all masonry-type substrates.

Available in 1, 5, and 55 gallon quantities.

---

Manufactured in the US by Encore Coatings, LLC Cartersville, GA.

For more information, visit [encorecoatings.com/lithiprolp](http://encorecoatings.com/lithiprolp)  
888-776-2242

