

# Fastlane® Swim Gunite Pool Mounting Kit Supplemental Guide



## Description

The Wall Mount Fastlane® Swim mounting Kit for a gunite pool is embedded into the pool wall; therefore, it must be installed during the construction of the pool. The mounting kit serves as a hanging system for the Current Unit and connection point for the PVC conduits that run under the pool deck to the remotely located Hydraulic Power Unit.

## Mounting Kit Parts Diagram

PART	QTY	DESCRIPTION
A	1	Mounting Bracket
B	2	PVC Coupling
C	2	2" (51mm) x 1-1/2" (38mm) Bushing Reducer
D	2	1-1/2" (38mm) PVC Pipe (supplied locally)
E	2	Threaded Rod
F	2	Bonding Clamp
G	2	Liquid Tight Fitting
H	2	2" (51mm) x 1" (25mm) Bushing Reducer
I	2	Flat Washer
J	2	Lock Washer
K	2	Jam Nut

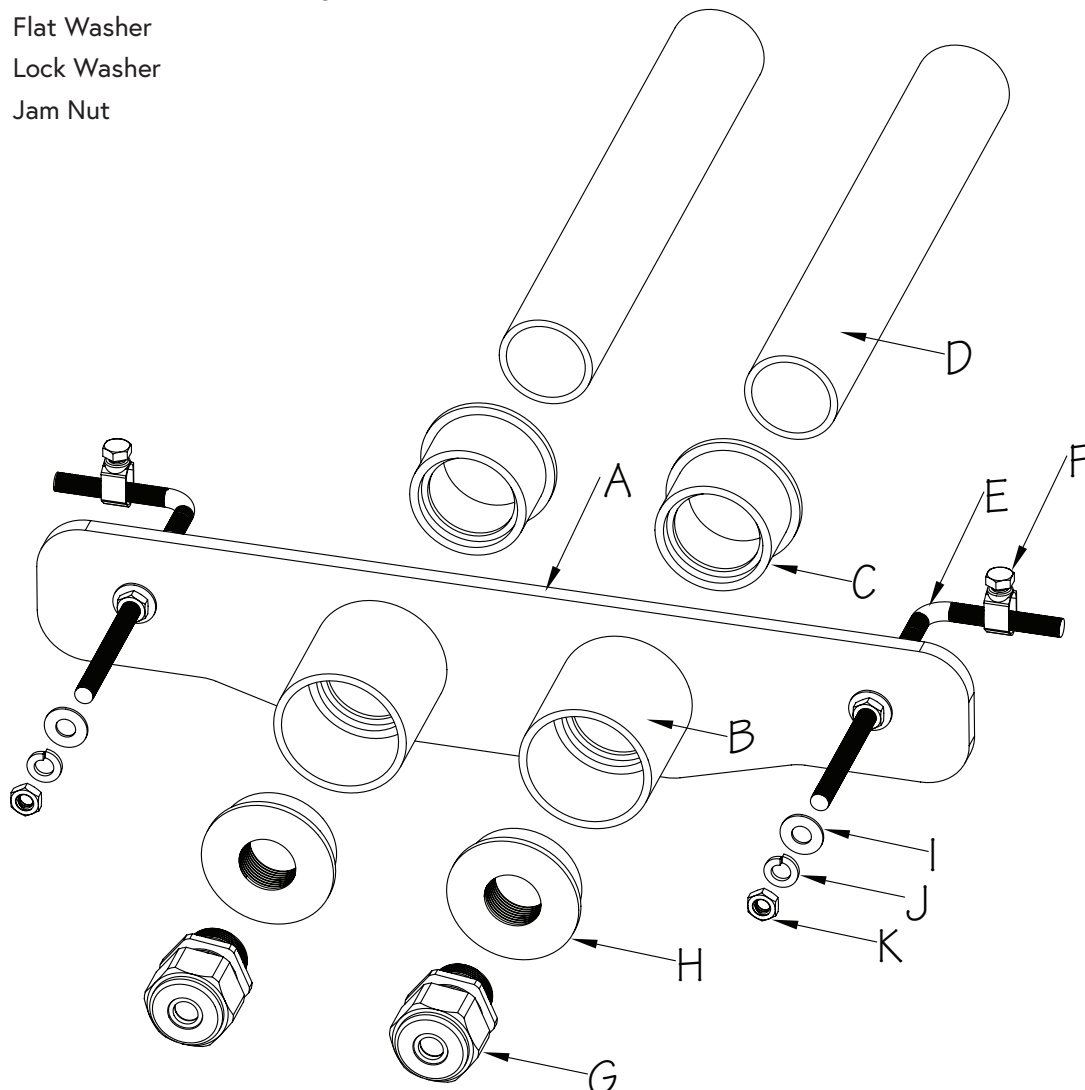


Fig. 1

# Fastlane® Swim Guniting Pool Mounting Kit Supplemental Guide



## Installation Instructions

1. The Mounting Kit Assembly (A) is to be secured to the Rebar Grid (B) of the pool in the desired Fastlane® Swim mounting location prior to the guniting application as shown in Figure 2. This should be done by securing the Threaded Rods (C) to the rebar using rebar ties.

When setting the mounting kit in the rebar, the "Waterline" marking (D), engraved into the bracket, should sit along the pool's expected waterline. The PVC Couplings (E) should extend  $1/2" \pm 1/8"$  (13mm  $\pm$  3mm) into the finished pool (F). The Threaded Rods (C) should extend  $1-1/4" \pm 1/8"$  (32mm  $\pm$  3mm) into the finished pool.

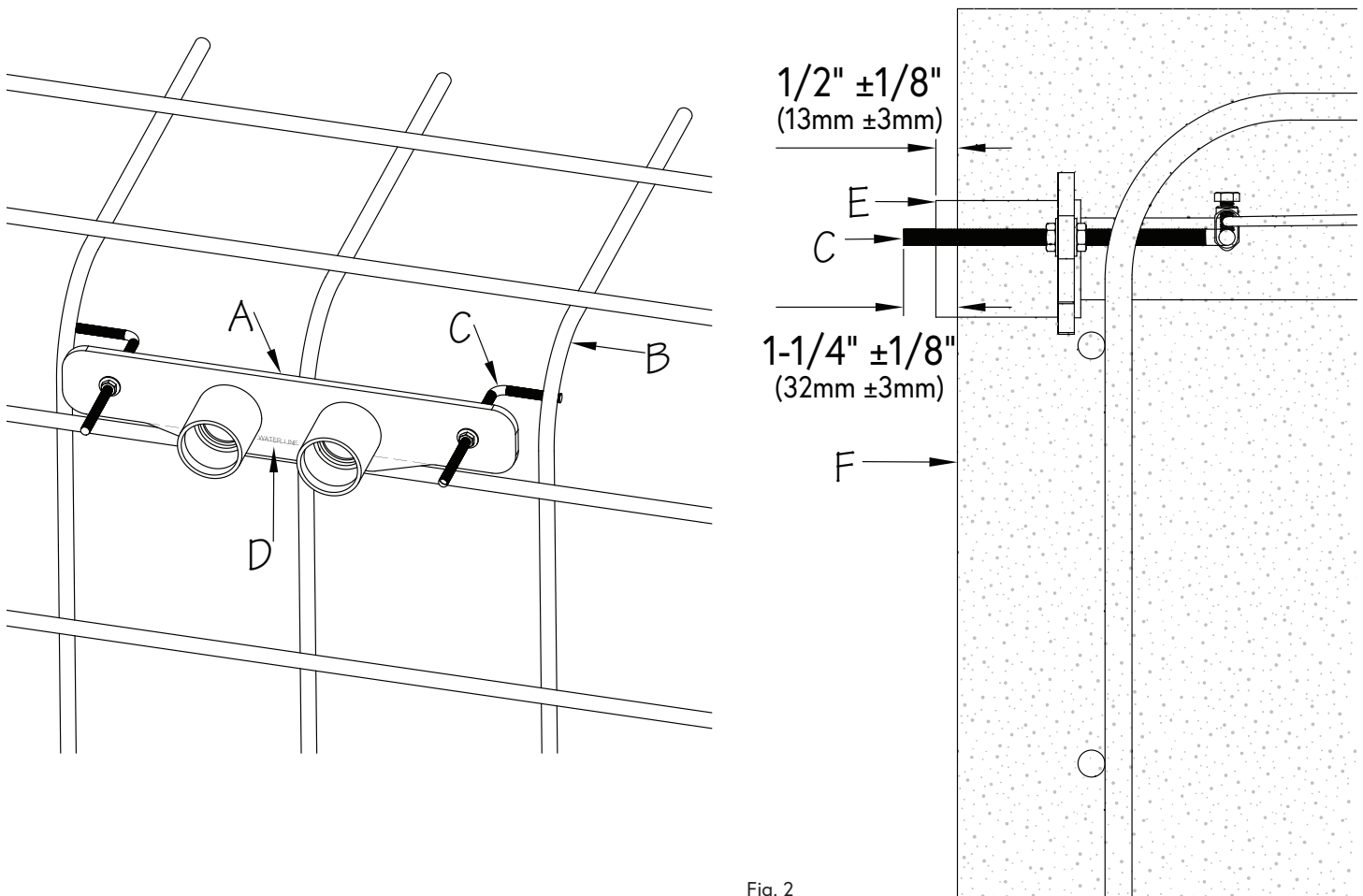


Fig. 2

# Fastlane® Swim Gunite Pool Mounting Kit Supplemental Guide



2. The location of the Hydraulic Power Unit (A) should be determined at this point in the installation. Unroll the lengths of 1-1/2" (38mm) flexible PVC Pipe (B) from the back of the mounting kit to the Hydraulic Power Unit. **The conduit run MUST travel above the pool's waterline.** Any bends in the pipe **MUST** be gradual sweeps and not sharp bends to allow the hydraulic hoses to be easily fed through each conduit. Glue the PVC Pipes into the reducers on the backside of the mounting bracket (Fig. 3).

The rods attached to the mounting bracket **MUST** be tied into the pool's bonding grid. Install a Bonding Clamp (C) onto each rod. Attach a #8 Solid Copper Wire (D) to each Bonding Clamp and then run these wires to a connection that is incorporated into the pool's bonding grid. In most cases this will be a connection in the rebar (Fig. 3).

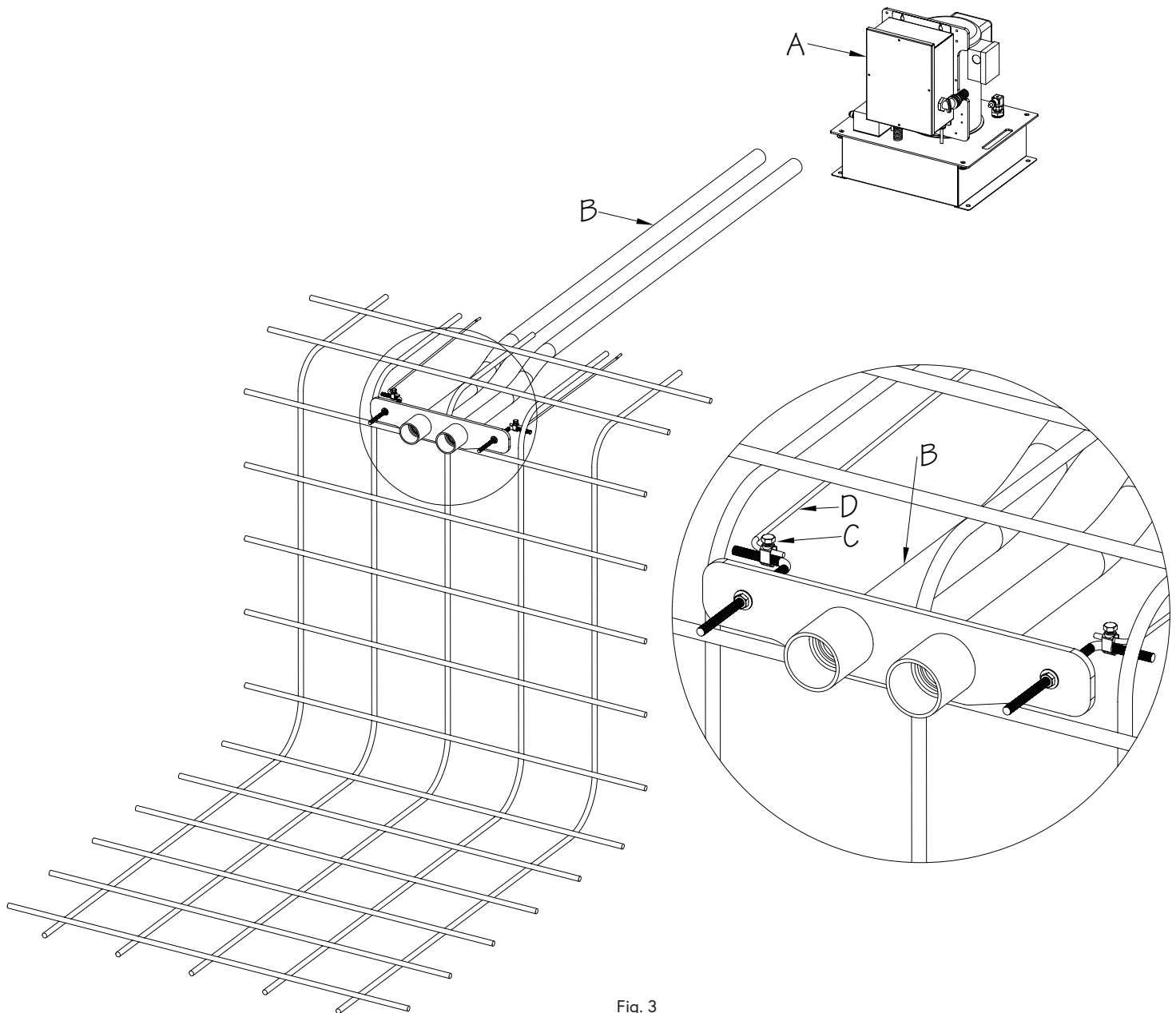


Fig. 3

# Fastlane® Swim Gunite Pool Mounting Kit Supplemental Guide



3. Prior to shooting gunite, it is CRITICAL that the openings of the PVC Couplings (A) and Threaded Rods (B) are covered. Gunite cannot be embedded in these areas (Fig. 4).

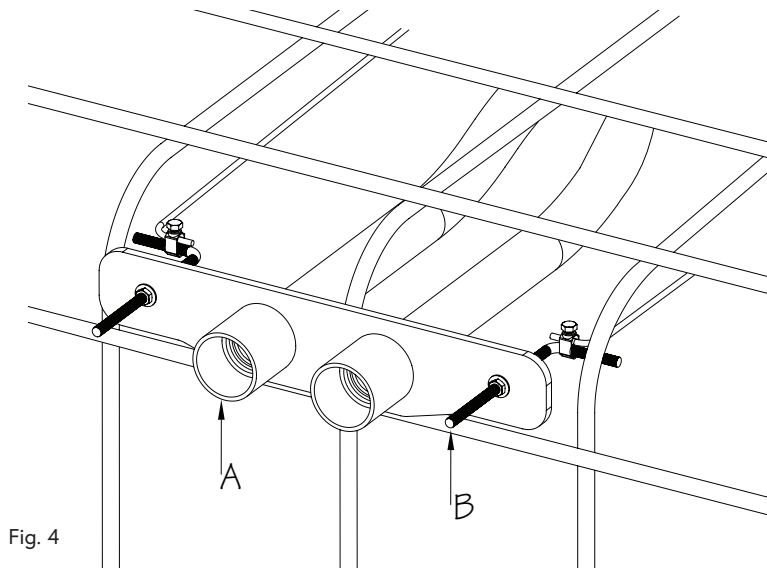


Fig. 4

4. After verifying that the bracket is positioned properly (per the specifications in Step 1), bonding connections and conduits are secured, and Coupling openings/Threaded Rods are covered, gunite can be shot. It is important to closely monitor the mounting kit during this process to ensure it remains in position (Fig. 5).

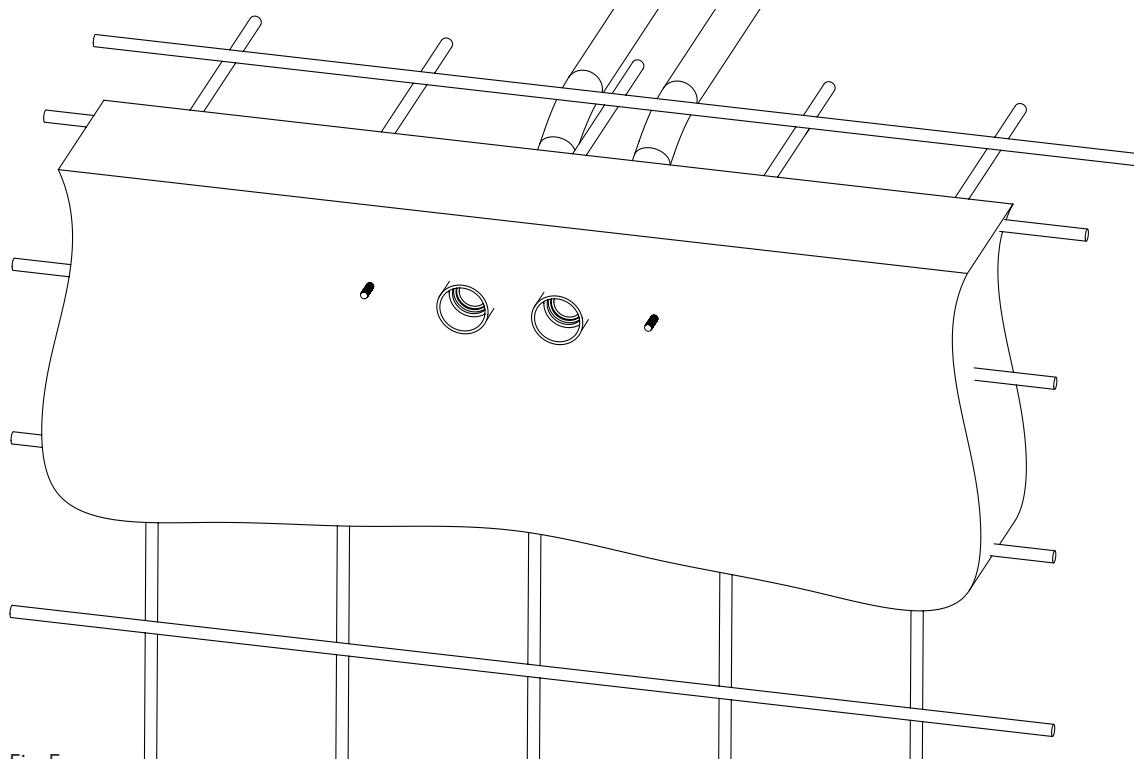


Fig. 5

# Fastlane® Swim Gunitite Pool Mounting Kit Supplemental Guide



5. Glue the Bushing Reducers (A) into the Couplings (B) (Fig. 6).

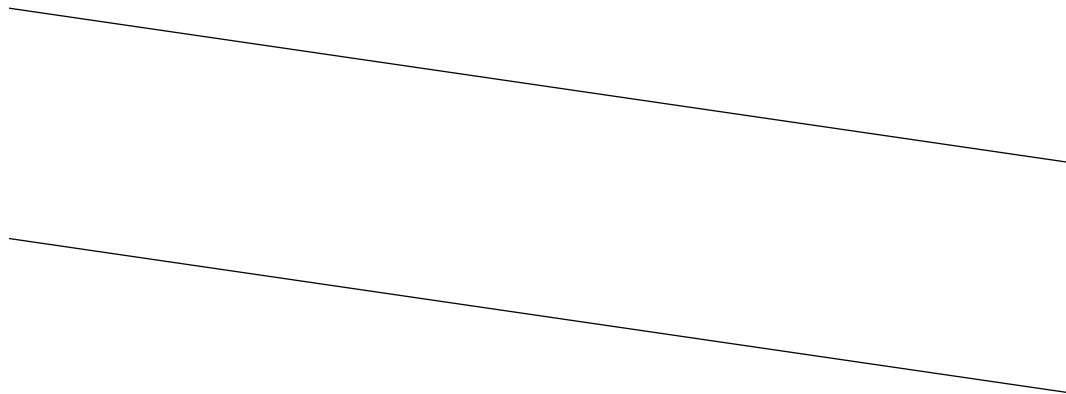
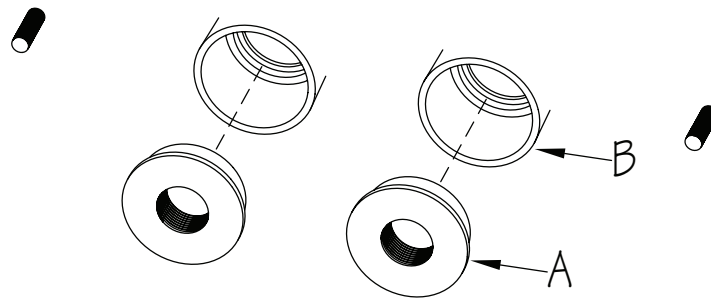


Fig. 6



6. The remaining mounting kit components will be installed when the Current Unit is being mounted to the pool wall. Refer to the Fastlane® Swim Owner's Manual for the assembly and installation of the Current Unit.