

Fastlane® Swim Concrete Vinyl Liner Pool Mounting Kit Supplemental Guide



Description

The Wall Mount Fastlane® Swim mounting kit for a concrete vinyl liner pool is embedded into the pool wall and **MUST** be installed during the construction of the pool. The mounting kit serves as a hanging system for the Current Unit and connection point for the PVC conduits that run under the pool deck to the remotely located Hydraulic Power Unit.

Mounting Kit Parts Diagram

PART	QTY	DESCRIPTION
A	1	Mounting Bracket
B	2	Coupler
C	4	Jam Nut
D	2	Threaded Rod
E	2	Bonding Clamp
F	2	Liquid Tight Fitting
G	2	1-1/2" (38mm) x 1" (25mm) Bushing Reducer
H	2	Star Thru-Wall Faceplate
I	2	Star Thru-Wall Fitting
J	2	Star Thru-Wall Fitting Locknut
K	2	1-1/2" (38mm) FSlip x MPT Adapter
L	2	1-1/2" (38mm) PVC Pipe (supplied locally)
M	2	Threaded Stud
N	2	Rubber Washer
O	2	Flat Washer
P	2	Lock Washer
Q	2	Sacrificial Washer
R	2	Sacrificial Bolt

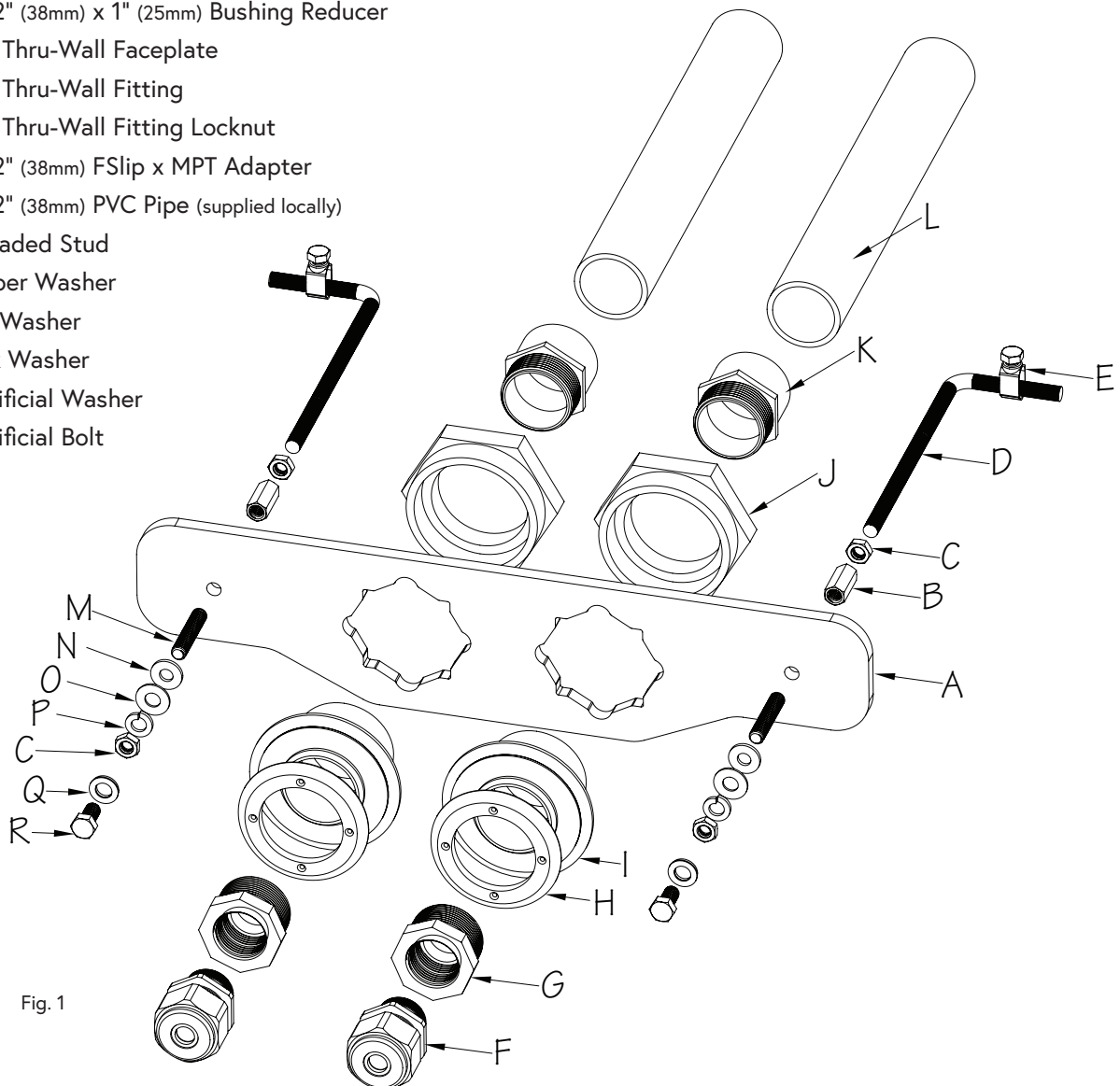


Fig. 1

Fastlane® Swim Concrete Vinyl Liner Pool Mounting Kit Supplemental Guide



Installation Instructions

1. Insert the Star Thru Wall Fittings (A) in the openings of the Mounting Bracket, making sure the holes around the perimeter of the fittings are oriented in the 12, 3, 6, and 9 o'clock positions as shown.

Thread the Locknuts (B) onto the fittings from the backside of the bracket. Apply Teflon tape or sealant to the threads of the FSlip x MPT Adapters (C) and then thread the Adapters into the Star Thru-Wall Fittings (Fig. 2).

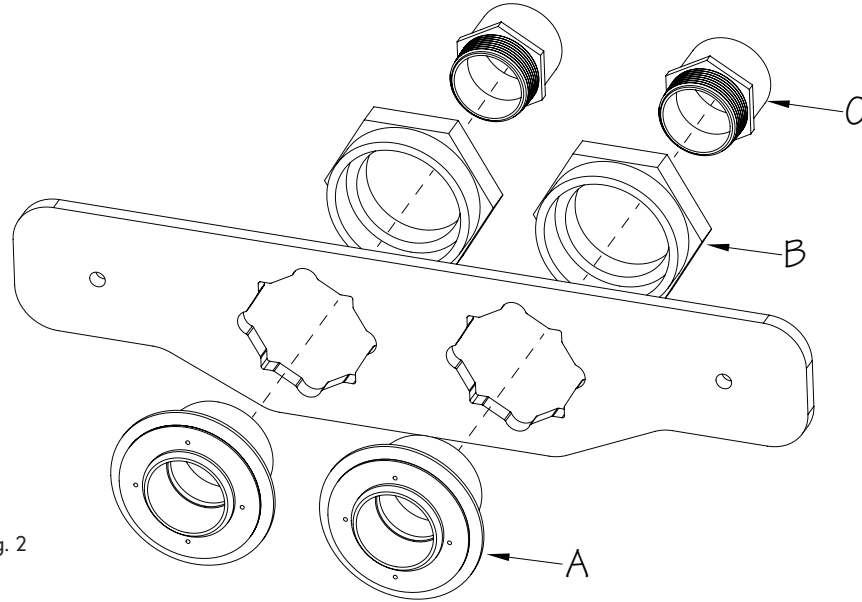


Fig. 2

2. Thread the Jam Nut (A) and Coupler (B) onto the Threaded Rod (C) so that the rod is inserted halfway into the Coupler. From the back of the bracket, align the Coupler and Threaded Rod with the small hole in the bracket. From the front of the bracket, insert the Sacrificial Bolt (D) through the hole and thread into the Coupler, making sure there is a Sacrificial Washer (E) between the bolt and bracket (Fig. 3)

NOTE: The Sacrificial Washer is made of neoprene on one side and Stainless Steel on the other side. The steel side should face out.

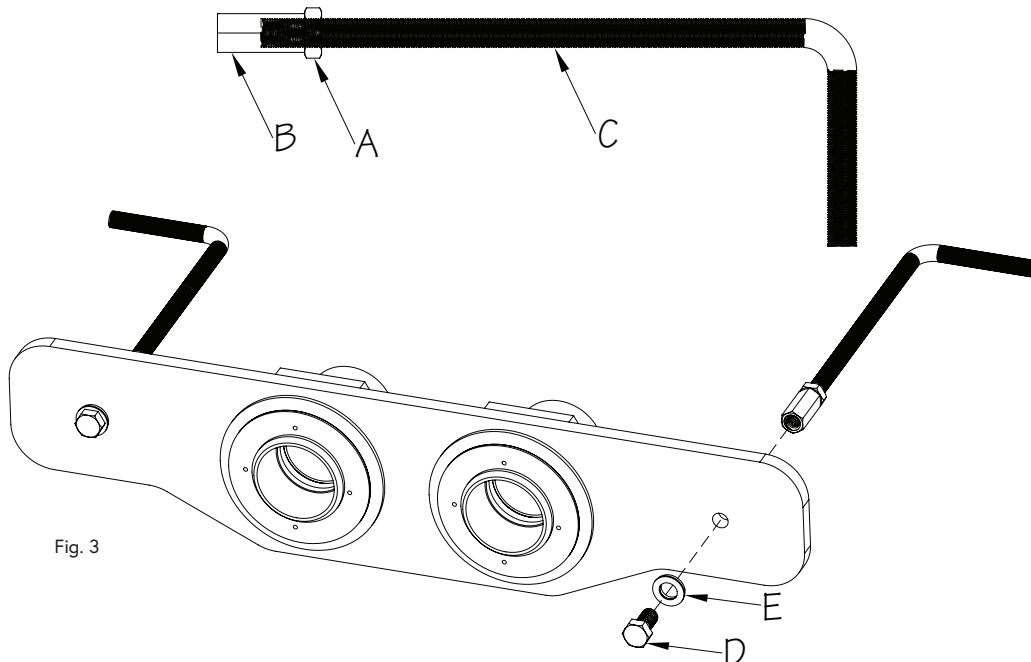


Fig. 3

Fastlane® Swim Concrete Vinyl Liner Pool Mounting Kit Supplemental Guide



3. The Mounting Kit Assembly (A) is to be secured to the Rebar Grid (B) of the pool in the desired Fastlane® Swim mounting location prior to pouring concrete as shown in Figure 4. This should be done by securing the Threaded Rods (C) to the rebar using rebar ties.

When setting the mounting kit in the rebar, the "Waterline" marking (D), engraved into the bracket, should sit along the pool's expected waterline. The front surface of the bracket (A) MUST be flush with the expected finished surface of the pool wall (E) and level.

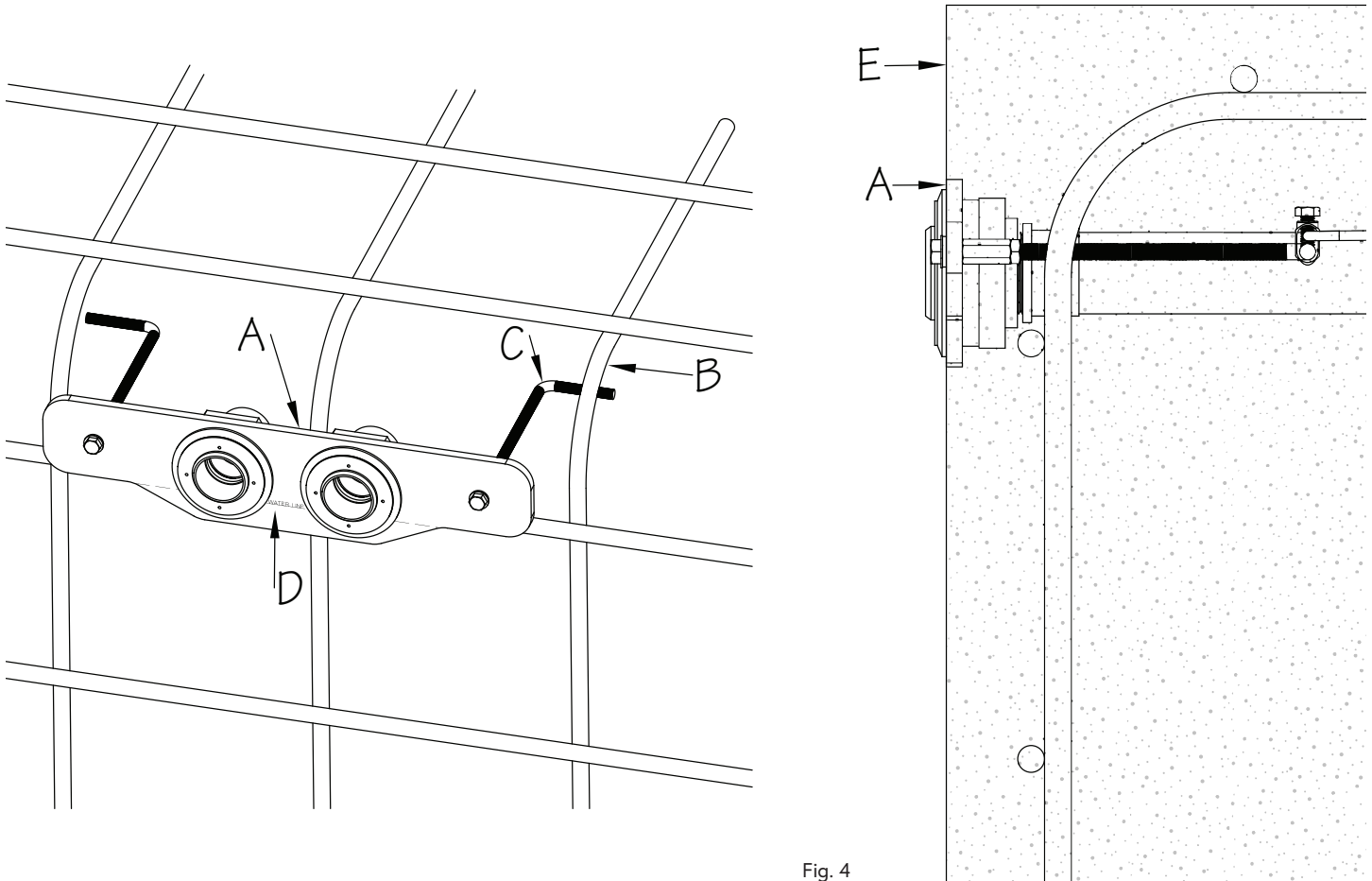


Fig. 4

Fastlane® Swim Concrete Vinyl Liner Pool Mounting Kit Supplemental Guide



- The location of the Hydraulic Power Unit (A) should be determined at this point in the installation. Unroll the lengths of 1-1/2" (38mm) flexible PVC Pipe (B) from the back of the mounting kit to the Hydraulic Power Unit. **The conduit run MUST travel above the pool's waterline.** Any bends in the pipe MUST be gradual sweeps and not sharp bends to allow the hydraulic hoses to be easily fed through each conduit. Glue the PVC Pipes into the adapters on the backside of the mounting bracket (Fig. 5).

The rods attached to the mounting bracket MUST be tied into the pool's bonding grid. Install a Bonding Clamp (C) onto each rod. Attach a #8 Solid Copper Wire (D) to each Bonding Clamp and then run these wires to a connection that is incorporated into the pool's bonding grid. In most cases this will be a connection in the rebar (Fig. 5).

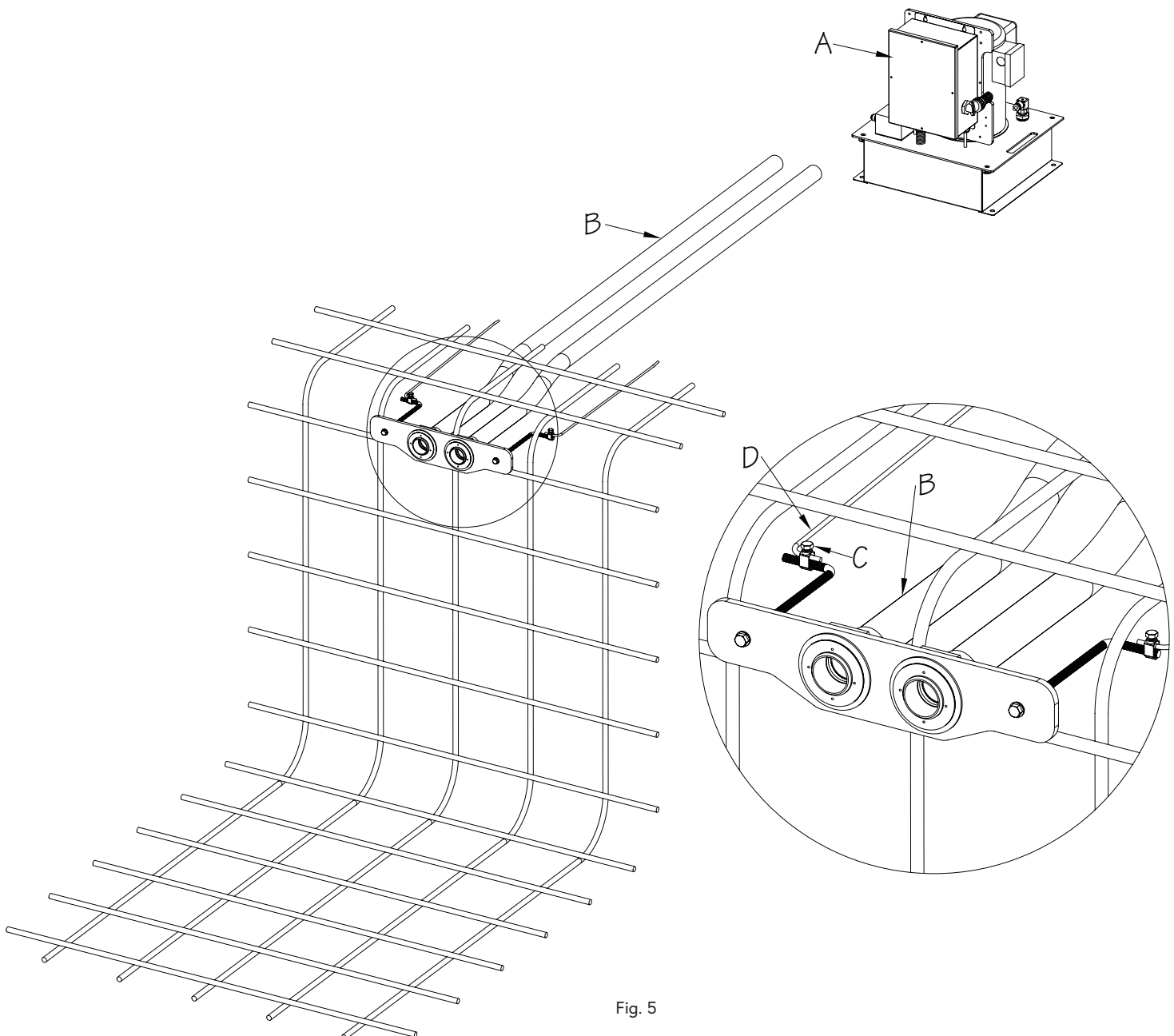


Fig. 5

Fastlane® Swim Concrete Vinyl Liner Pool Mounting Kit Supplemental Guide



5. Prior to pouring the concrete, be sure that the openings of the Star Thru-Wall Fittings (A) and Sacrificial Bolts (B) are covered. Concrete cannot be embedded in these areas (Fig. 6).

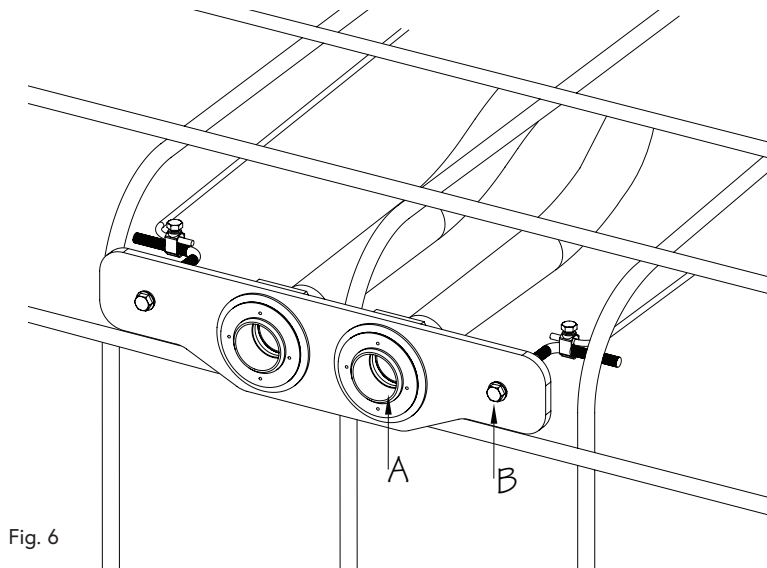


Fig. 6

6. After verifying that the bracket is positioned properly (per the specifications in Step 1), bonding connections and conduits are secured, and Thru-Wall openings/Sacrificial Bolts are covered, concrete can be poured. It is important to closely monitor the mounting kit during this process to ensure it remains in position.

Remove the Sacrificial Bolts (A) and Washers (B) once the concrete cures (Fig. 7).

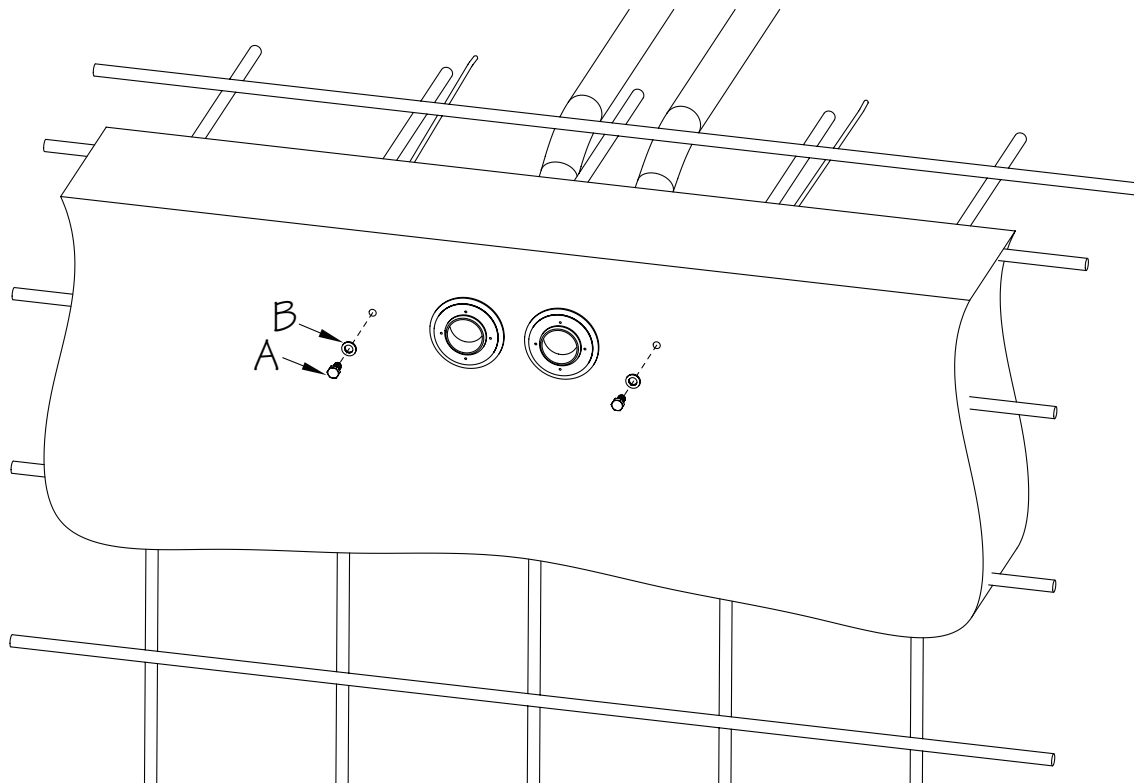


Fig. 7

Fastlane® Swim Concrete Vinyl Liner Pool Mounting Kit Supplemental Guide



7. The pool Liner (A) should be installed at this time (Fig. 8).

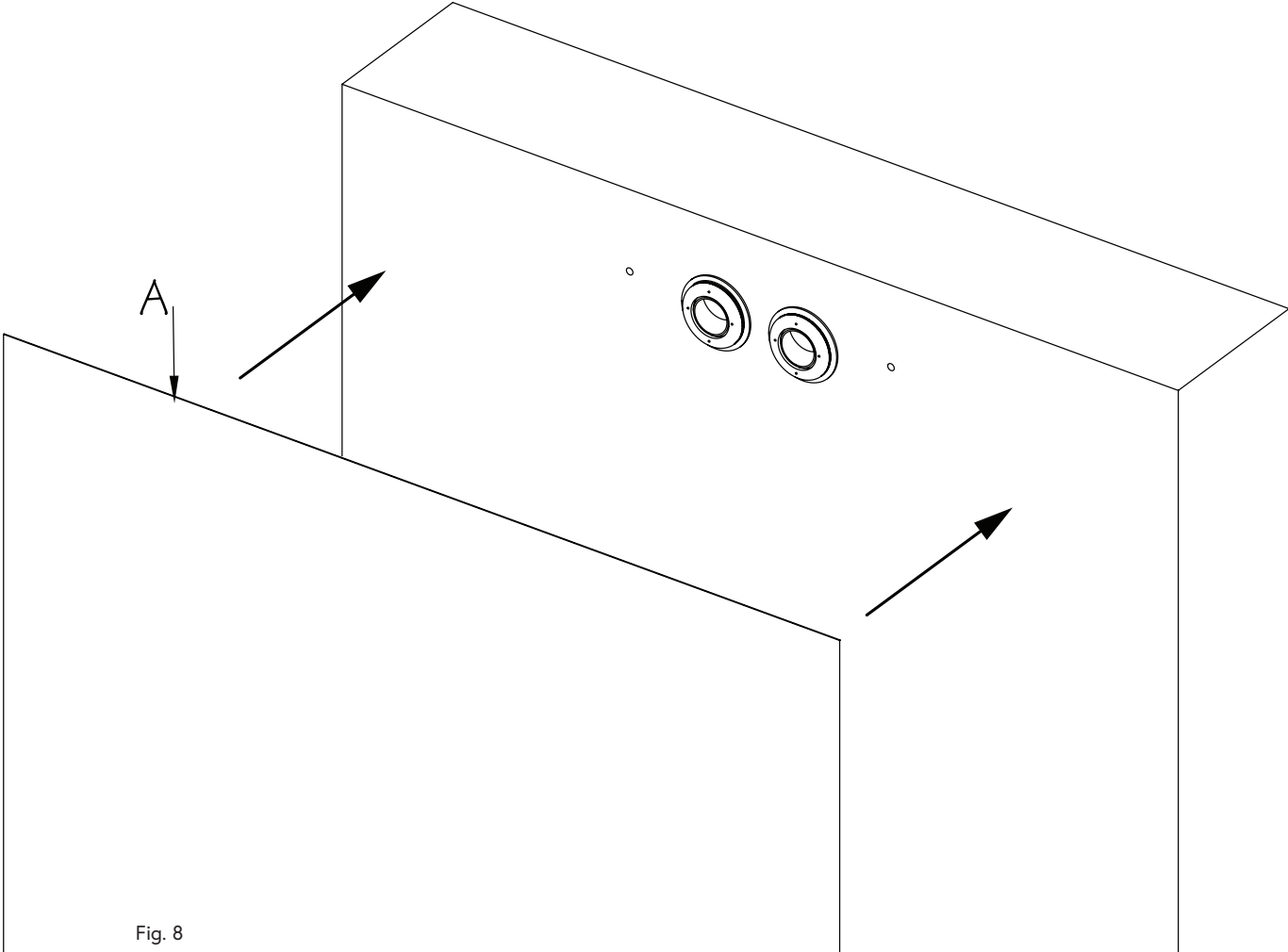


Fig. 8

Fastlane® Swim Concrete Vinyl Liner Pool Mounting Kit Supplemental Guide



8. Prior to cutting holes in the pool liner, water should be added to the pool to weigh down the liner.

Locate the Star Thru-Wall Fittings behind the liner. Position the Thru-Wall Faceplate (A) against the liner onto the fitting, making sure the holes in the Faceplate are aligned with the holes in the fitting. Use a scratch awl to poke out the (4) holes in the liner (B). Secure the Faceplate to the fitting with the Faceplate Screws (C). Use a hand screwdriver when installing screws to avoid cracking the Faceplate.

Once the Faceplates are installed, use a sharp utility knife to cut out the round holes in the liner (D) using the inside of the Faceplate as a template (Fig. 9).

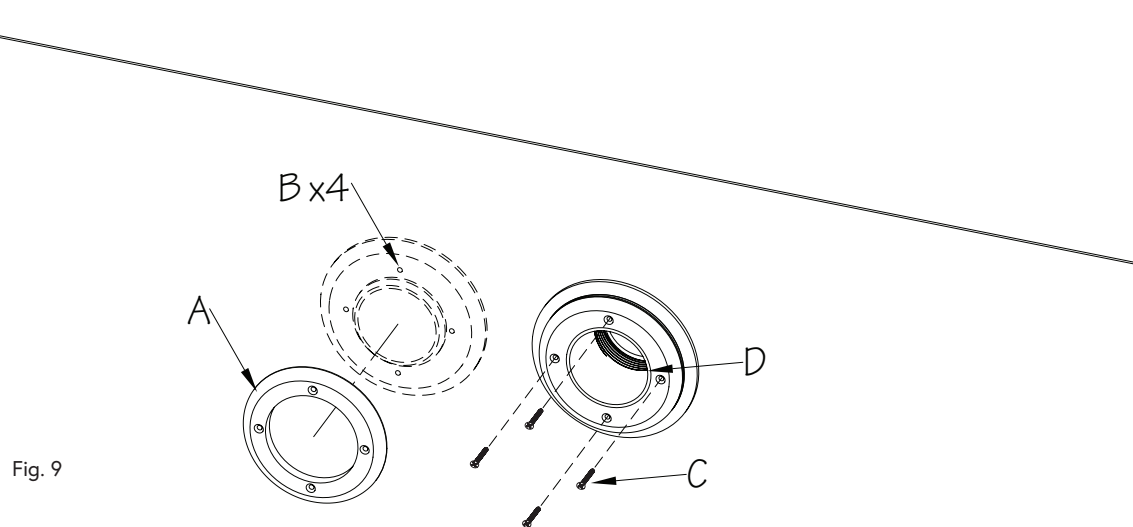


Fig. 9

9. Remove the Faceplates (A) after the holes have been cut in the liner. Spread a thin layer of silicone on the face of the black gasket (B) that is adhered to the Star Thru-Wall Fitting (behind the liner). Spread a thin layer of silicone on the back of the Faceplate (C). Re-attach the Faceplate and allow the silicone to cure (Fig. 10).

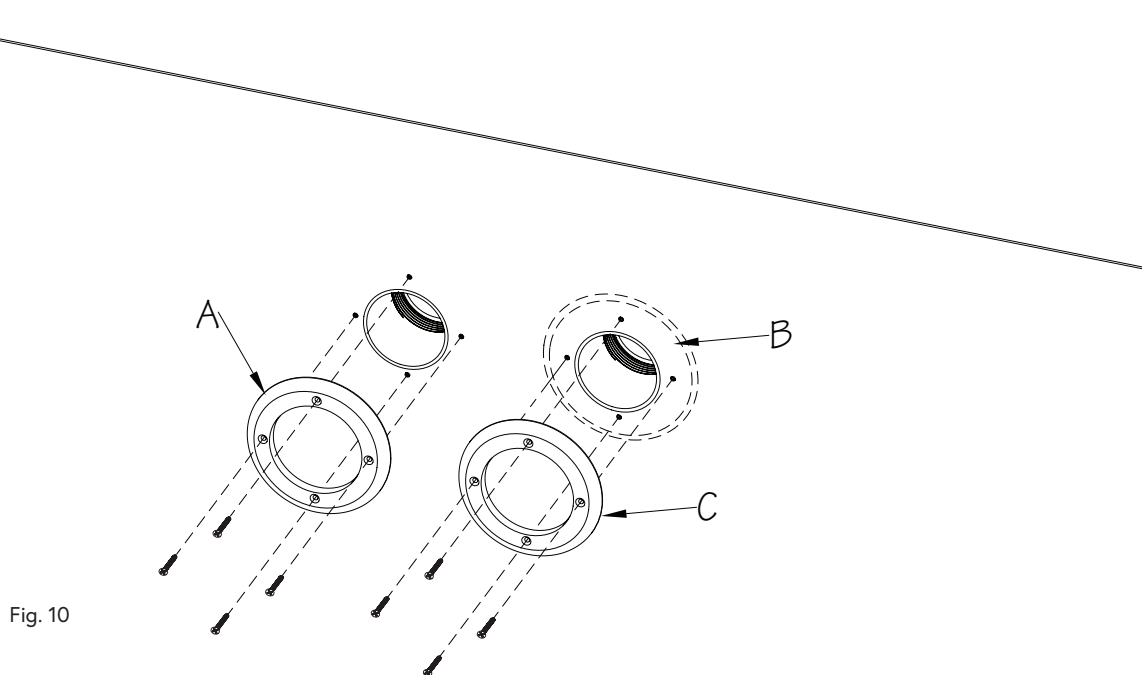


Fig. 10

Fastlane® Swim Concrete Vinyl Liner Pool Mounting Kit Supplemental Guide



10. Locate the Couplers (A) behind the liner. Use a sharp utility knife to cut out the round holes in the liner using the coupler holes as a template.

Thread the Stud (B) into the Coupler so that $1\text{-}1/4" \pm 1/8"$ ($32\text{mm} \pm 3\text{mm}$) of the stud is protruding into the pool. Spread a thin bead of silicone on the face of the Rubber Washer (C) and then install the washer over the Stud, adhering to the liner (Fig. 11).

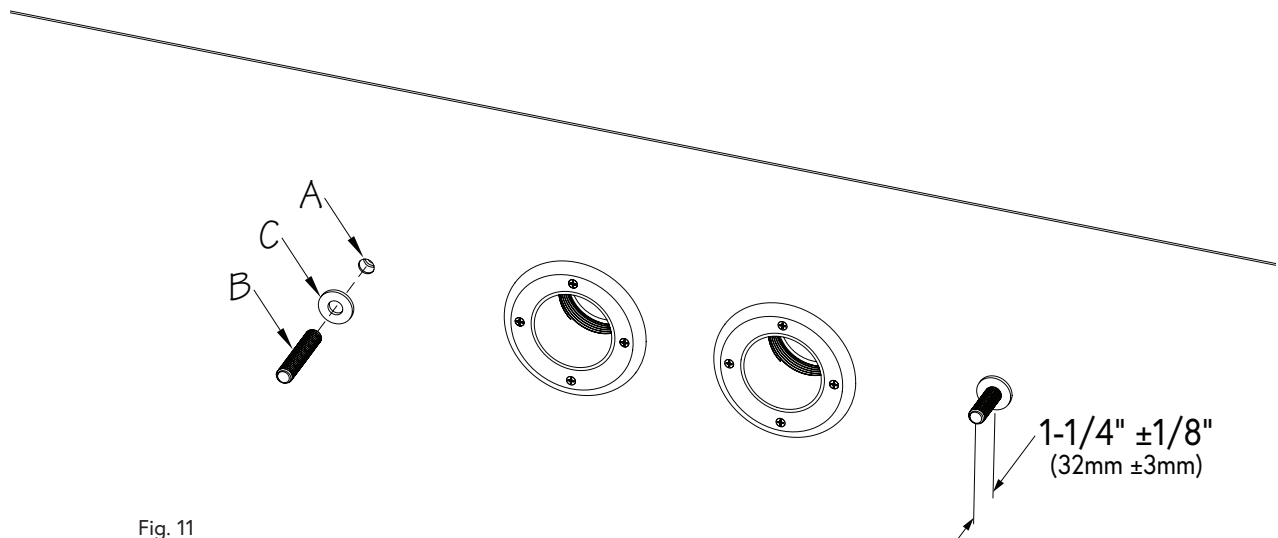


Fig. 11

11. Apply Teflon sealant to the threads of each Bushing Reducer (A) and then thread them into the Star Thru-Wall Fittings (B) (Fig. 12).

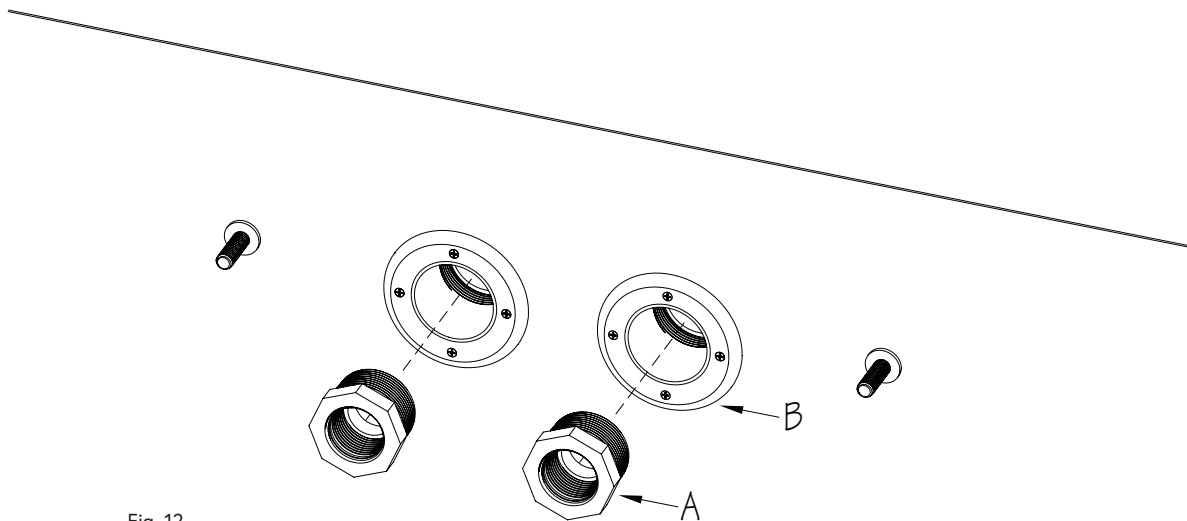


Fig. 12

12. The remaining mounting kit components will be installed when the Current Unit is being mounted to the pool wall. Refer to the Fastlane® Swim Owner's Manual for the assembly and installation of the Current Unit.