

Fastlane® Tread Concrete Vinyl Liner Pool Mounting Kit Supplemental Guide



Description

The mounting kits for the Fastlane® Tread and Grab Bar are embedded into the pool wall and **MUST** be installed during the construction of the pool. The mounting kit serves as both a mounting system and connection point for the PVC conduits that run under the pool deck to the remotely located Hydraulic Power Unit.

Mounting Kit Parts Diagram

FASTLANE TREAD MOUNTING KIT

PART	QTY	DESCRIPTION
A	1	Mounting Bracket
B	2	Coupler
C	4	Jam Nut
D	2	Threaded Rod
E	2	Bonding Clamp
F	2	Liquid Tight Fitting
G	2	1-1/2" (38mm) x 1" (25mm) Bushing Reducer
H	2	Star Thru-Wall Fitting Faceplate
I	2	Star Thru-Wall Fitting
J	2	Star Thru-Wall Fitting Locknut
K	2	1-1/2" (38mm) FSlip x MPT Adapter
L	2	1-1/2" (38mm) PVC Pipe (supplied locally)
M	2	Rubber Washer
N	2	Threaded Stud
O	4	Sealing Washer
P	2	Flat Washer
Q	2	Lock Washer
R	2	Sacrificial Bolt
S	1	Mounting Template (not shown)

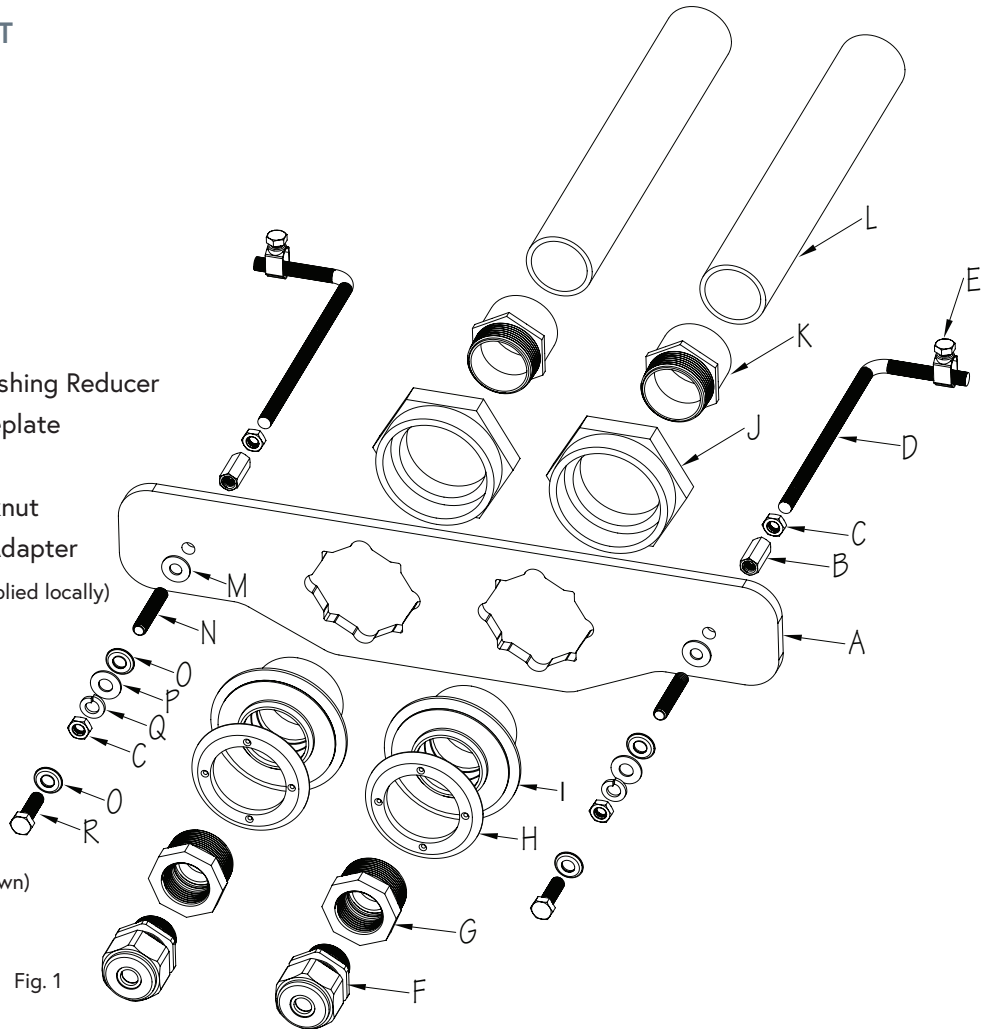


Fig. 1

GRAB BAR MOUNTING KIT

PART	QTY	DESCRIPTION
A	1	Mounting Bracket
B	2	Threaded Rod
C	2	Bonding Clamp
D	2	Coupler
E	2	Sacrificial Bolt
F	2	Hex Head Bolt

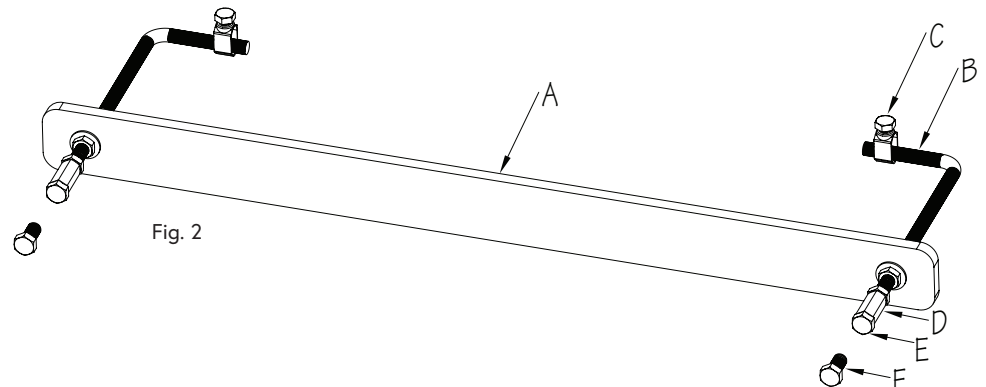


Fig. 2

Fastlane® Tread Concrete Vinyl Liner Pool Mounting Kit Supplemental Guide



Installation Instructions

1. Insert the Star Thru Wall Fittings (A) in the openings of the Mounting Bracket, making sure the holes around the perimeter of the fittings are oriented in the 12, 3, 6, and 9 o'clock positions as shown.

Thread the Locknuts (B) onto the fittings from the backside of the bracket. Apply Teflon tape or sealant to the threads of the FSlip x MPT Adapters (C) and then thread the Adapters into the Star Thru-Wall Fittings (Fig. 3).

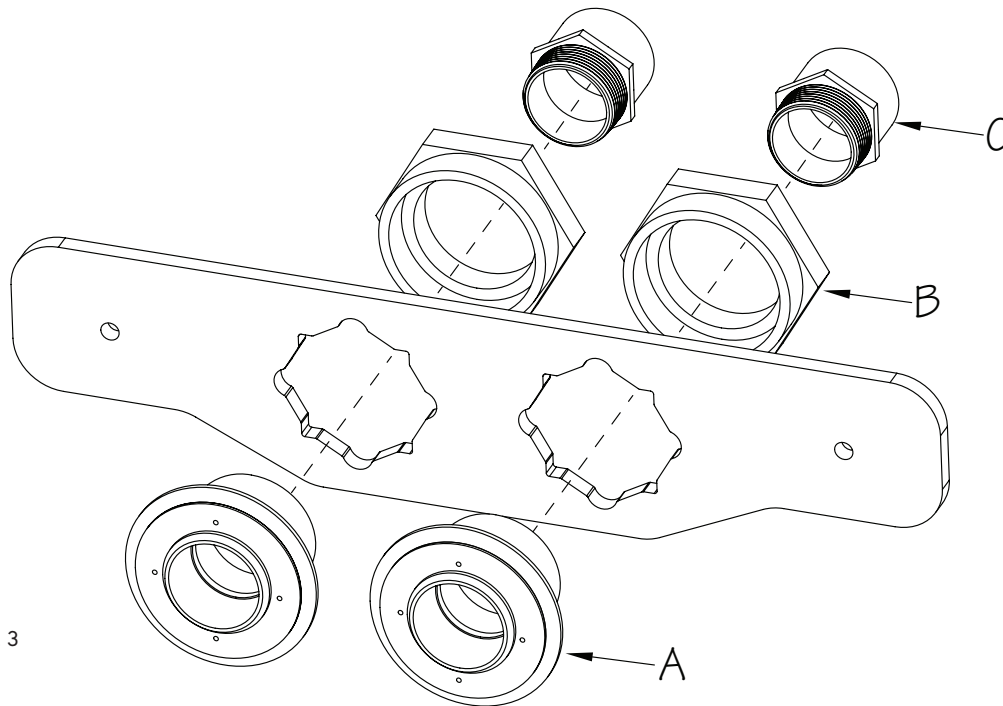


Fig. 3

2. Thread the Jam Nut (A) and Coupler (B) onto the Threaded Rod (C) so that the rod is inserted halfway into the Coupler. Repeat for other threaded rod (Fig. 4).

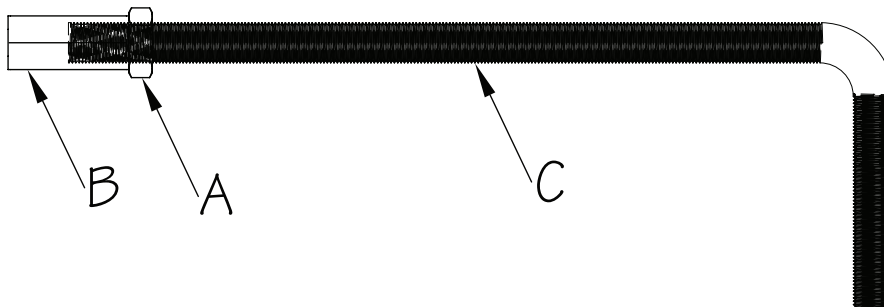


Fig. 4

Fastlane® Tread Concrete Vinyl Liner Pool Mounting Kit Supplemental Guide



3. The Mounting Template provided is intended to ensure proper placement of the mounting kit in the pool wall.

Position the Mounting Template (A) over the front of the Mounting Bracket, aligning the slotted holes with the holes in the bracket. From the back of the bracket, align the Threaded Rod Assembly (B) with the hole in the bracket. From the front of the template, insert the Sacrificial Bolt (C) through the slotted hole and into the Coupler of the Threaded Rod, making sure there is a Sealing Washer (D) in between the bolt and template. **Ensure that the bolt is at the top of slotted hole in the template prior to tightening (Fig. 5)**

NOTE: The Sealing Washer is made of neoprene on one side and Stainless Steel on the other side. The steel side should face out.

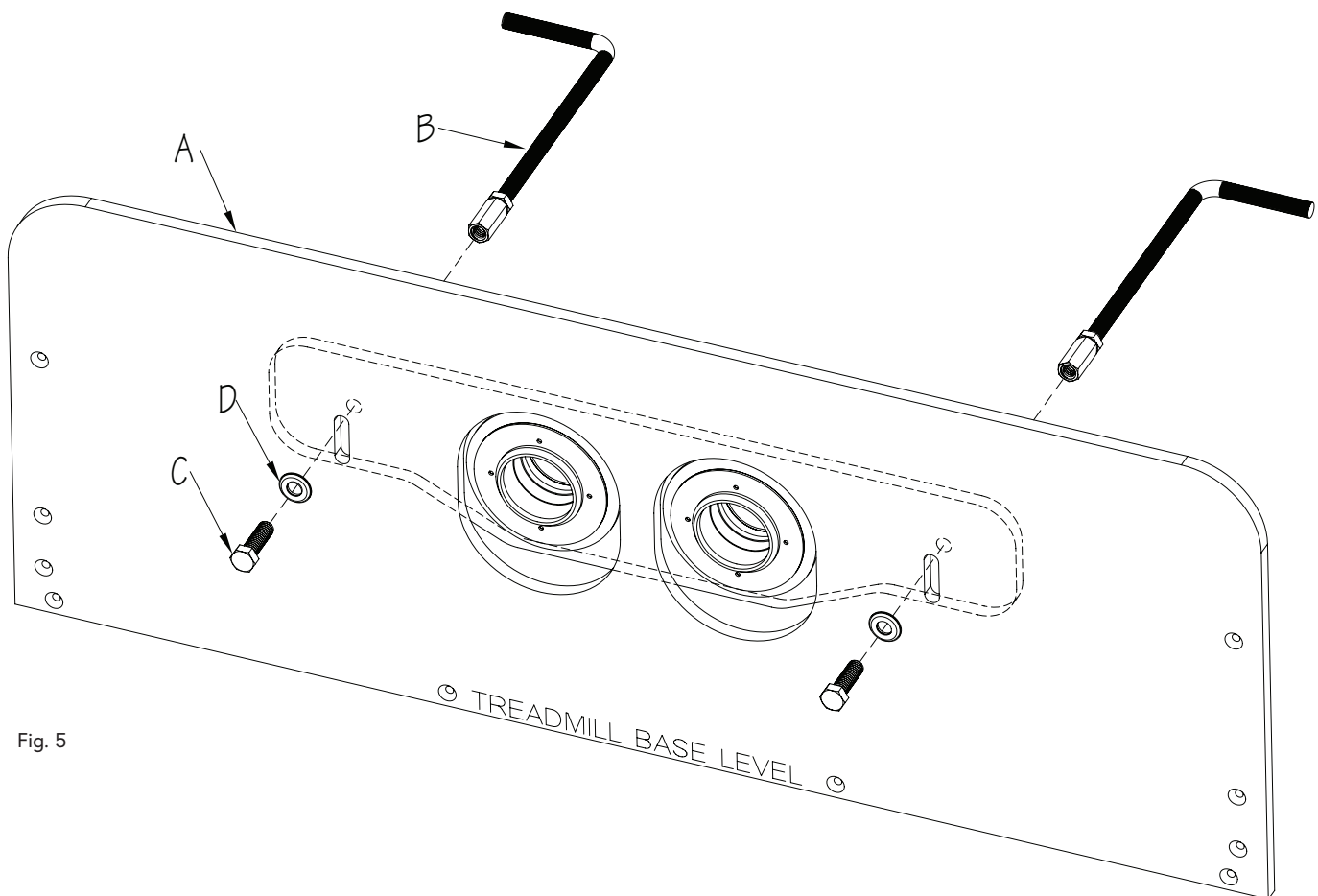


Fig. 5

Fastlane® Tread Concrete Vinyl Liner Pool Mounting Kit Supplemental Guide



4. To ensure the Fastlane® Tread Mounting Kit is positioned at the correct height, it is recommended to pour a level concrete slab (A) in front of the wall in which the Fastlane Tread will be mounted. This will serve as the finished floor (Fig. 6A).

Position the base of the Mounting Template (B) onto the finished floor so that the back surface of the template is flush with the expected finished pool wall. Concrete will be poured to the back of the template and then the template will be removed so that the front of the mounting bracket is flush with the finished pool wall. Once in position, secure the Threaded Rods (C) to the Rebar Grid (D) using rebar ties (Fig. 6B). **Refer to the detail drawing on the following page to supplement these instructions.**

The Grab Bar Mounting Kit should be centered above the Fastlane Tread Mounting Kit. Position the Bracket (E) so that the "Waterline" marking (F), engraved into the bracket, sits along the pool's expected waterline. In addition, the Coupler (G) should be flush with the expected finished pool wall. The Sacrificial Bolt (H) will be removed after the concrete is poured. Once in position, secure the Threaded Rods (C) to the Rebar Grid (D) using rebar ties (Fig. 6C). **Refer to the detail drawing on the following page to supplement these instructions.**

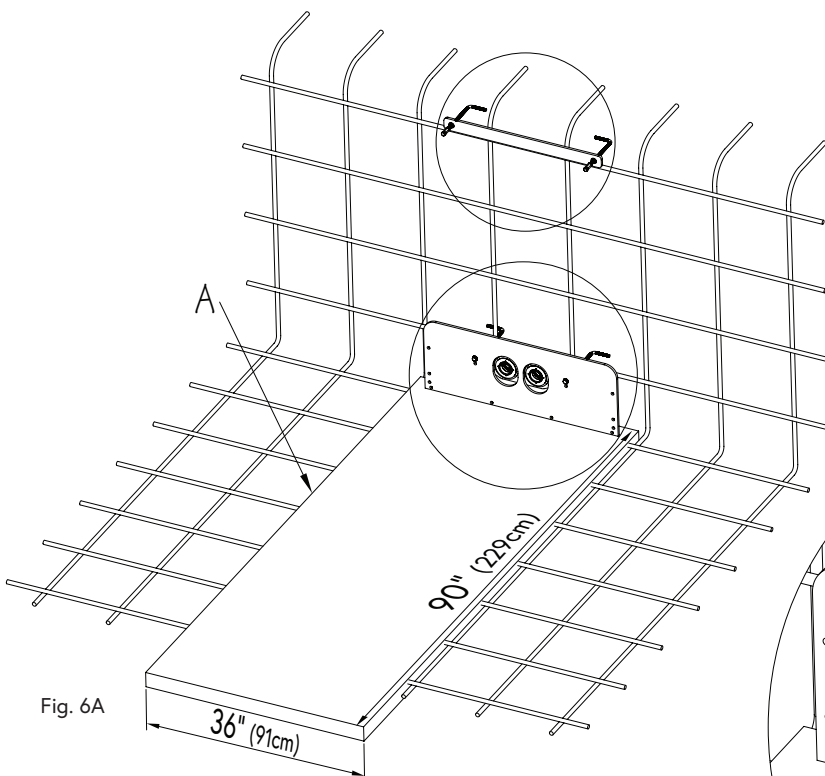


Fig. 6A

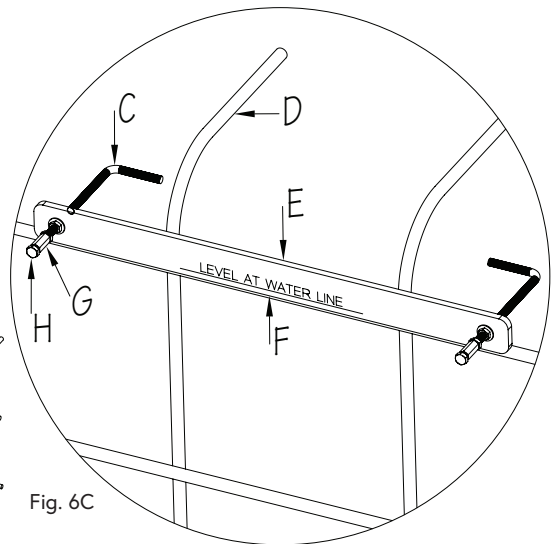


Fig. 6C

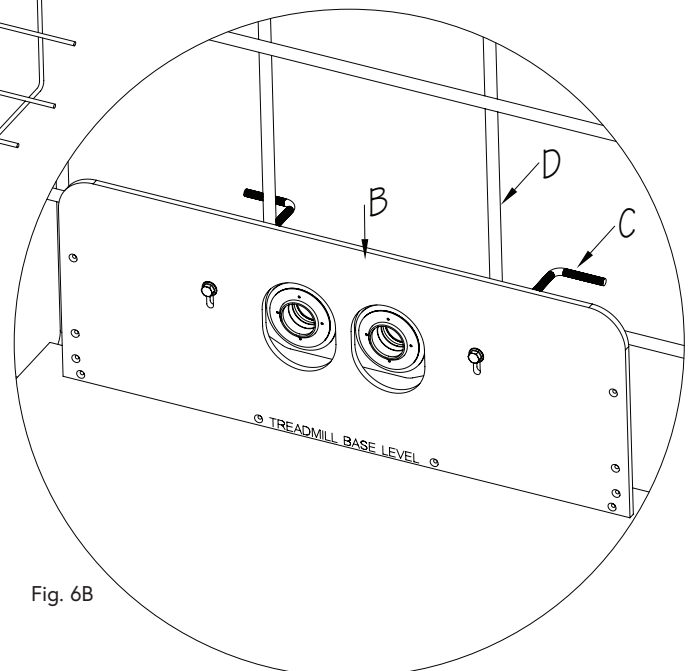


Fig. 6B

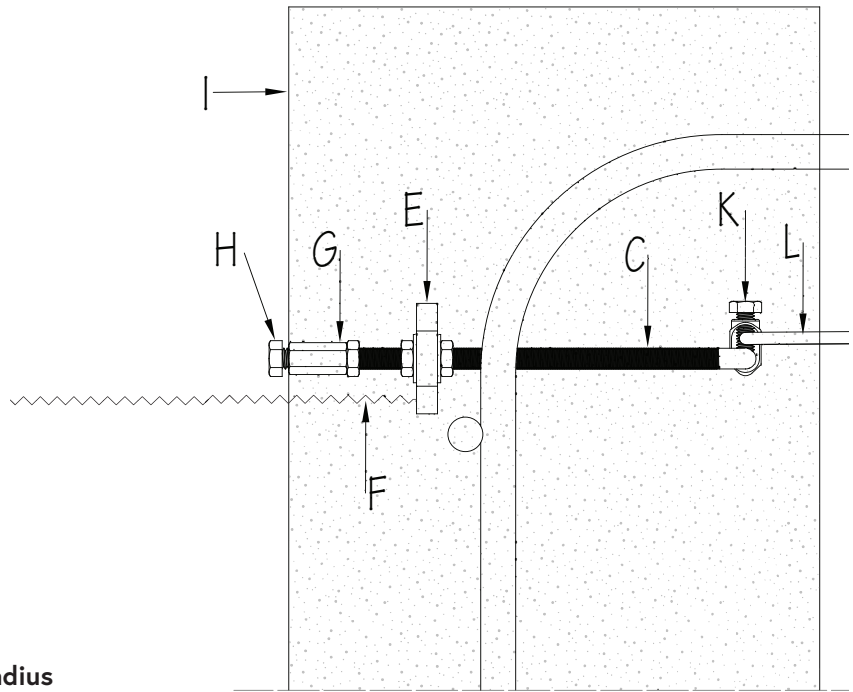
Fastlane® Tread Concrete Vinyl Liner Pool Mounting Kit Supplemental Guide



MOUNTING KIT INSTALLATION DETAIL

PART DESCRIPTION

- A Concrete Slab (finished floor)
- B Mounting Template
- C Threaded Rod
- D Rebar Grid
- E Grab Bar Mounting Bracket
- F Waterline
- G Coupler
- H Sacrificial Bolt
- I Finished Pool Wall
- J 1-1/2" (38mm) PVC Pipe
- K Bonding Clamp
- L #8 Solid Copper Wire



IMPORTANT NOTES:

- Pool wall **MUST** be sharp with a max radius of 4" (102mm)
- Any radius in the pool wall will require a modification to the End Covers of the Fastlane Tread

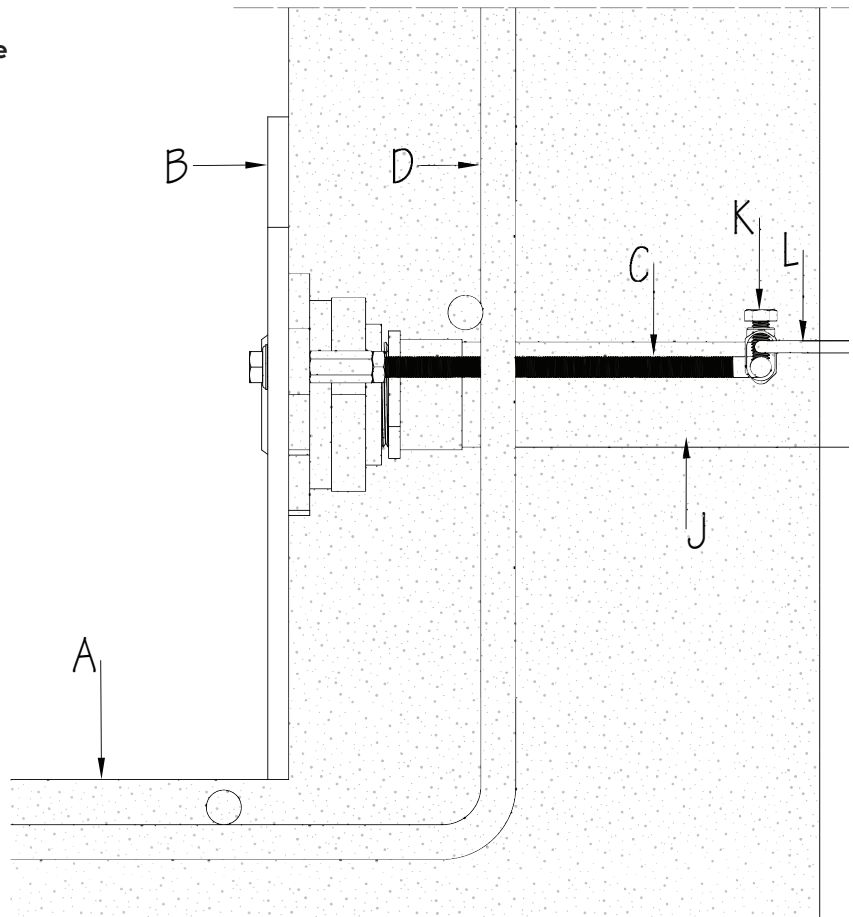


Fig. 7

Fastlane® Tread Concrete Vinyl Liner Pool Mounting Kit Supplemental Guide



5. The location of the Hydraulic Power Unit (A) should be determined at this point in the installation. Unroll the lengths of 1-1/2" (38mm) flexible PVC Pipe (B) from the back of the Fastlane® Tread mounting kit to the Hydraulic Power Unit. **The conduit run MUST travel above the pool's waterline.** Any bends in the pipe MUST be gradual sweeps and not sharp bends to allow the hydraulic hoses to be easily fed through each conduit. Glue the PVC Pipes (B) into the Adapters (C) on the backside of the mounting bracket (Fig. 8).

The rods attached to the bracket MUST be tied into the pool's bonding grid. Install a Bonding Clamp (D) onto each rod. Attach a #8 Solid Copper Wire (E) to each Bonding Clamp and then run these wires to a connection that is incorporated into the pool's bonding grid. In most cases this will be a connection in the rebar. Repeat for the rods attached to the Grab Bar Mounting Kit (F) (Fig. 8).

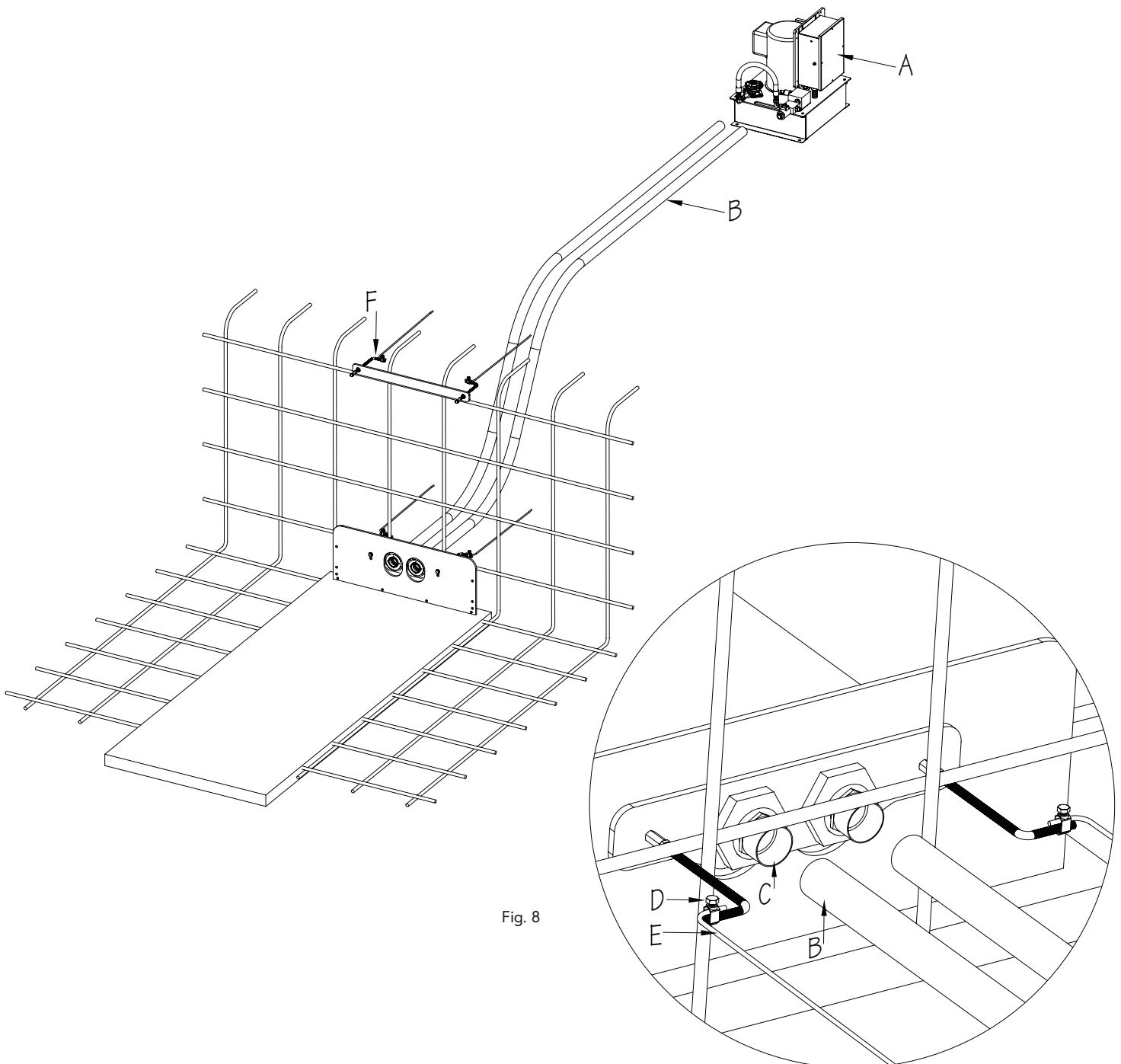


Fig. 8

Fastlane® Tread Concrete Vinyl Liner Pool Mounting Kit Supplemental Guide



6. Prior to pouring concrete, it is CRITICAL that the openings of the Star Thru-Wall Fittings (A) and Sacrificial Bolts (B) are covered. Concrete cannot be embedded in these areas (Fig. 9).

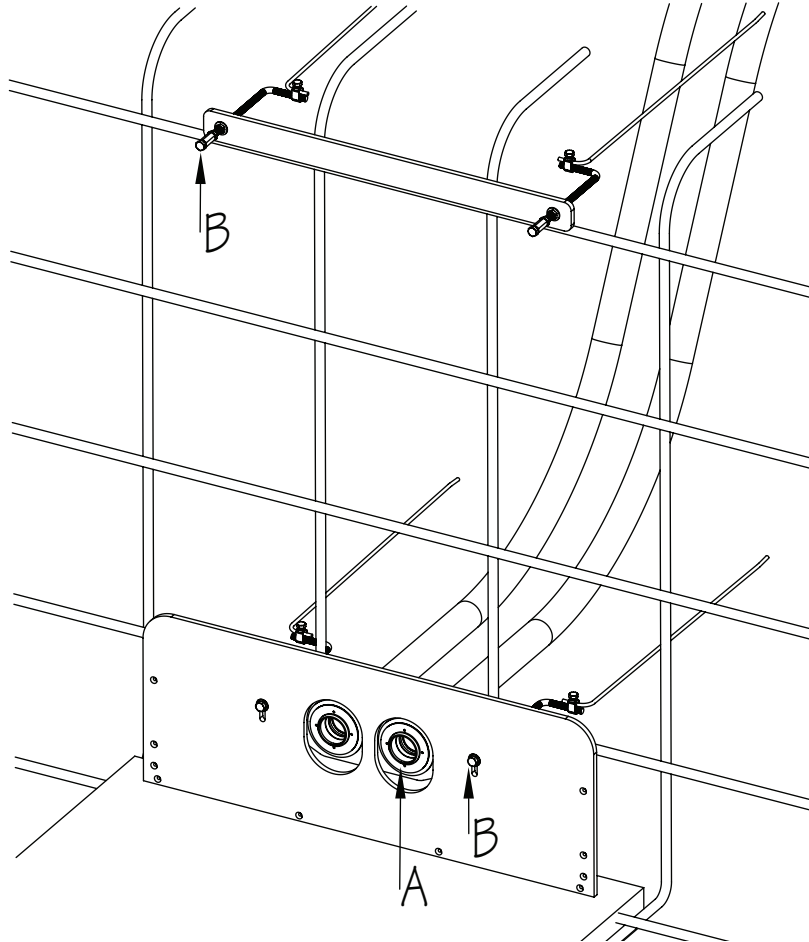


Fig. 9

Fastlane® Tread Concrete Vinyl Liner Pool Mounting Kit Supplemental Guide



7. After verifying that the Mounting Kits are positioned properly (per the specifications in Step 4), bonding connections and conduits are secured, and Thru-Wall openings/Sacrificial Bolts are covered, concrete can be poured. It is important to closely monitor the mounting kits during this process to ensure they remain in position.

Once the concrete is poured to the back of the template, remove the template by removing the Sacrificial Bolts and Washers, leaving the mounting bracket flush with the finished pool wall. Remove the Sacrificial Bolts from the grab bar mounting kit once the concrete cures (Fig. 10).

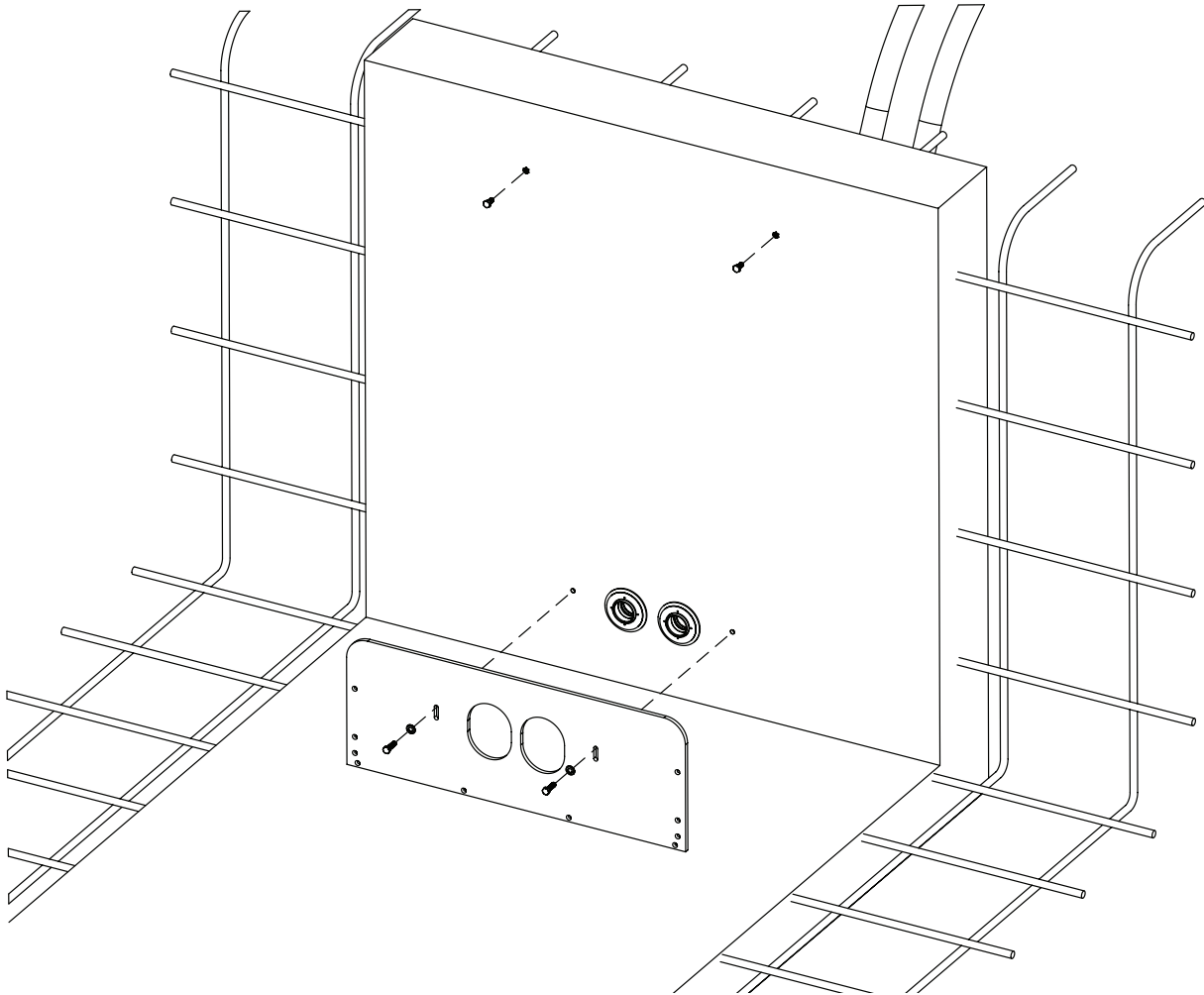


Fig. 10

Fastlane® Tread Concrete Vinyl Liner Pool Mounting Kit Supplemental Guide



8. The pool Liner (A) should be installed at this time (Fig. 11).

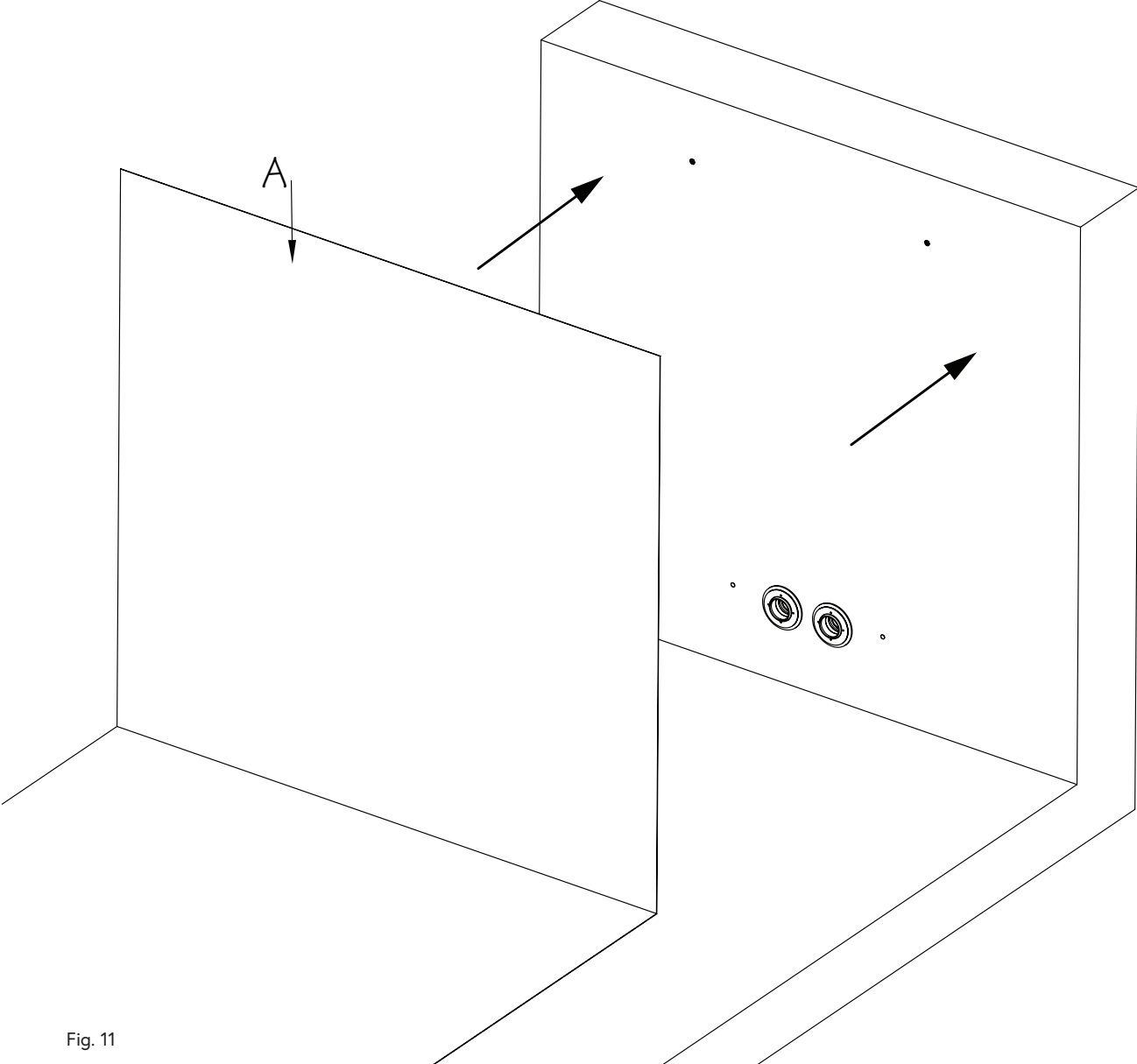


Fig. 11

Fastlane® Tread Concrete Vinyl Liner Pool Mounting Kit Supplemental Guide



9. Prior to cutting holes in the pool liner, water should be added to the pool to weigh down the liner.

Locate the Star Thru-Wall Fittings behind the liner. Position the Thru-Wall Faceplate (A) against the liner onto the fitting, making sure the holes in the Faceplate are aligned with the holes in the fitting. Use a scratch awl to poke out the (4) holes in the liner (B). Secure the Faceplate to the fitting with the Faceplate Screws (C). Use a hand screwdriver when installing screws to avoid cracking the Faceplate.

Once the Faceplates are installed, use a sharp utility knife to cut out the round holes in the liner (D) using the inside of the Faceplate as a template (Fig. 12).

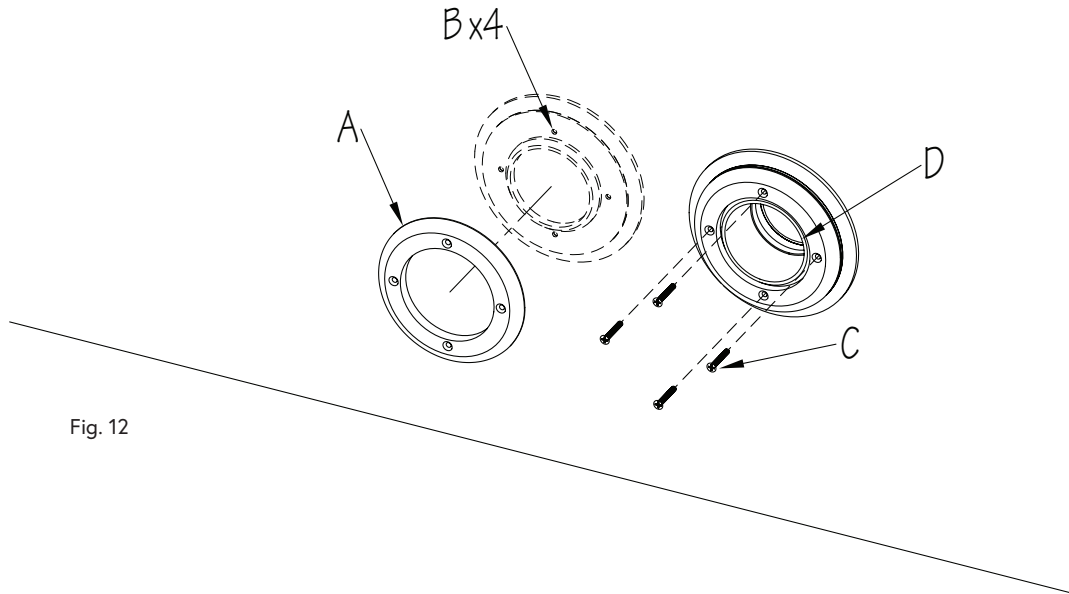


Fig. 12

10. Remove the Faceplates (A) after the holes have been cut in the liner. Spread a thin layer of silicone on the face of the black gasket (B) that is adhered to the Star Thru-Wall Fitting (behind the liner). Spread a thin layer of silicone on the back of the Faceplate (C). Re-attach the Faceplate and allow the silicone to cure (Fig. 13).

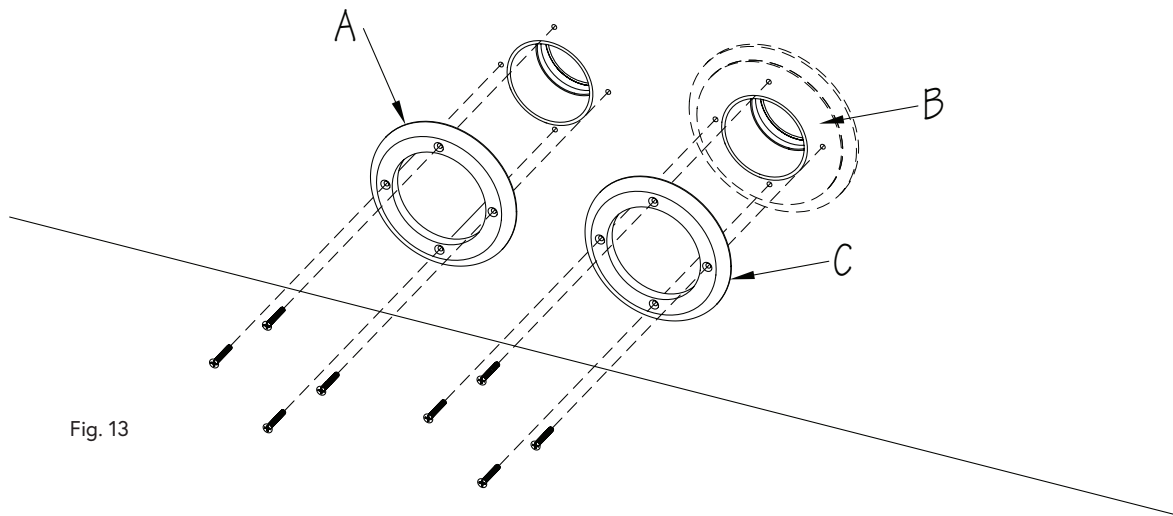


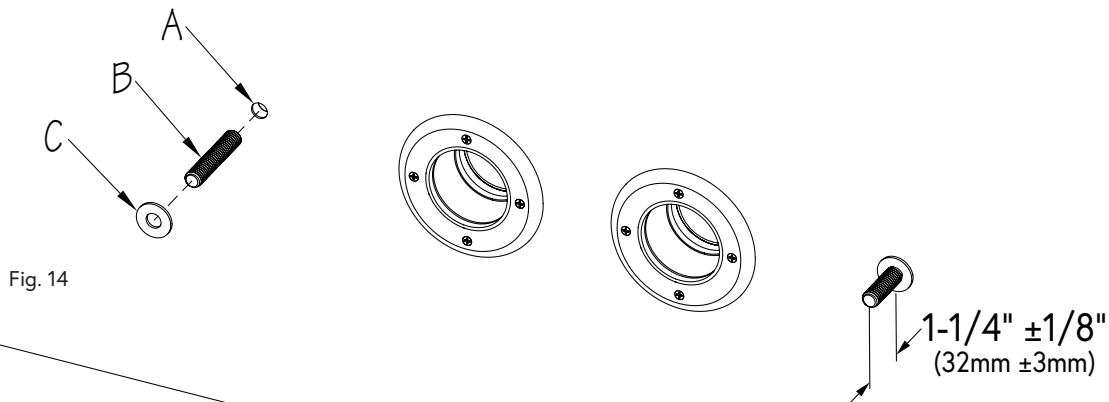
Fig. 13

Fastlane® Tread Concrete Vinyl Liner Pool Mounting Kit Supplemental Guide

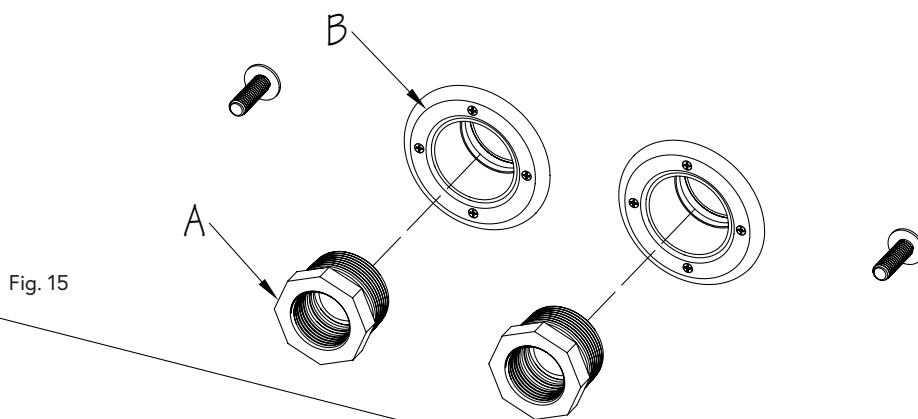


11. Locate the Couplers (A) behind the liner. Use a sharp utility knife to cut out the round holes in the liner using the coupler holes as a template.

Thread the Stud (B) into the Coupler so that $1\text{-}1/4" \pm 1/8"$ ($32\text{mm} \pm 3\text{mm}$) of the stud is protruding into the pool. Spread a thin bead of silicone on the face of the Rubber Washer (C) and then install the washer over the Stud, adhering to the liner (Fig. 14).



12. Apply Teflon sealant to the threads of each Bushing Reducer (A) and then thread them into the Star Thru-Wall fittings (B) (Fig. 15).



Fastlane® Tread Concrete Vinyl Liner Pool Mounting Kit Supplemental Guide



13. At the top of the pool wall, locate the Couplers (A), behind the liner, from the grab bar mounting kit. Use a sharp utility knife to cut out the round holes in the liner using the coupler holes as a template (Fig. 16).

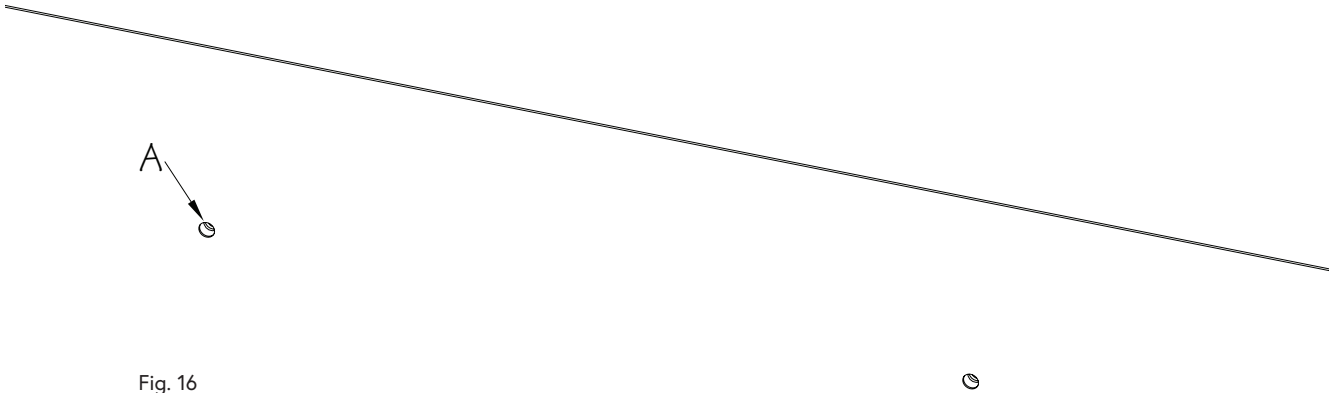


Fig. 16

14. The remaining mounting kit components will be installed when the Fastlane® Tread is being mounted to the pool wall. **Refer to the Fastlane Tread Owner's Manual.**