

Fastlane® Tread Steel Panel Vinyl Liner Pool Mounting Kit Supplemental Guide



Description

The mounting kits for the Fastlane® Tread and Grab Bar MUST be installed prior to installing the vinyl liner. The mounting kit serves as both a mounting system and connection point for the PVC conduits that run under the pool deck to the remotely located Hydraulic Power Unit.

Mounting Kit Parts Diagram

FASTLANE TREAD MOUNTING KIT

PART	QTY	DESCRIPTION
A	1	Mounting Bracket
B	2	Liquid Tight Fitting
C	2	1-1/2" (38mm) x 1" (25mm) Bushing Reducer
D	2	Star Thru-Wall Fitting Faceplate
E	2	Star Thru-Wall Fitting
F	2	Star Thru-Wall Fitting Locknut
G	2	1-1/2" (38mm) FSlip x MPT Adapter
H	2	1-1/2" (38mm) PVC Pipe (supplied locally)
I	2	Rivet Nut
J	1	Rivet Nut Tool
K	2	Threaded Stud
L	2	Rubber Washer
M	2	Sealing Washer
N	2	Flat Washer
O	2	Lock Washer
P	2	Jam Nut

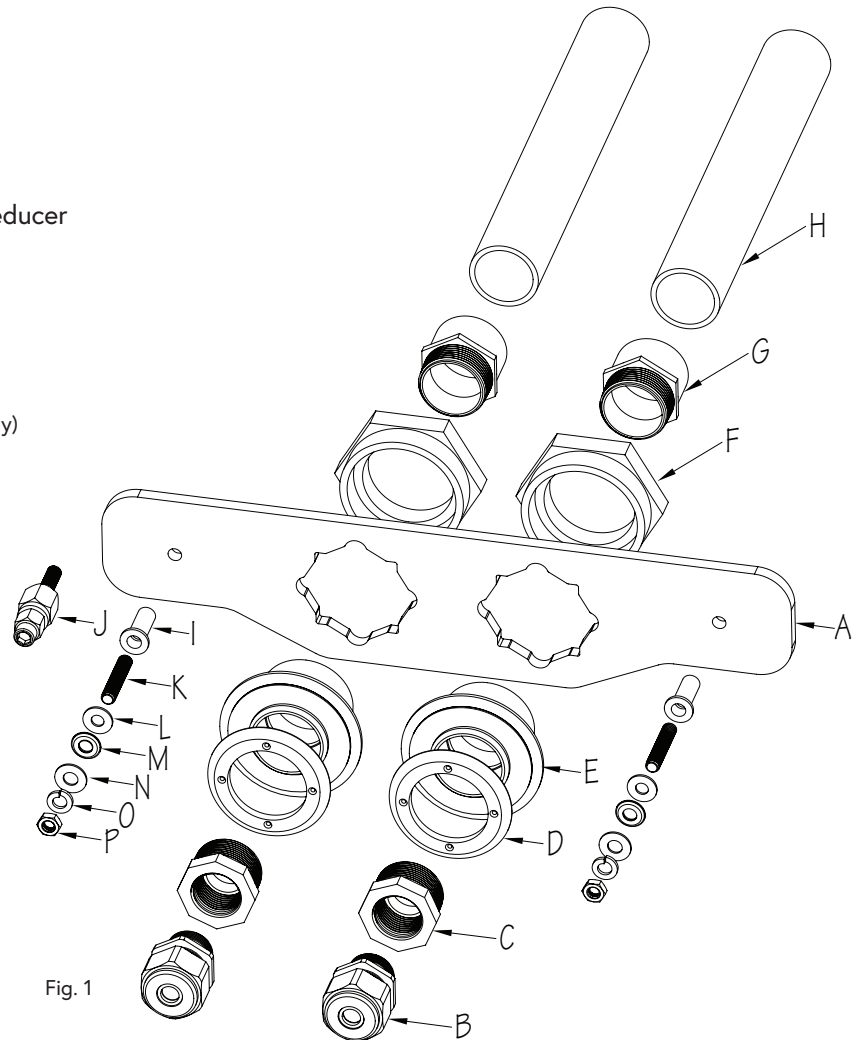


Fig. 1

GRAB BAR MOUNTING KIT

PART	QTY	DESCRIPTION
A	1	Mounting Bracket
B	2	Rivet Nut
C	1	Rivet Nut Tool
D	2	Grab Bar Spacer
E	2	Hex Head Bolt

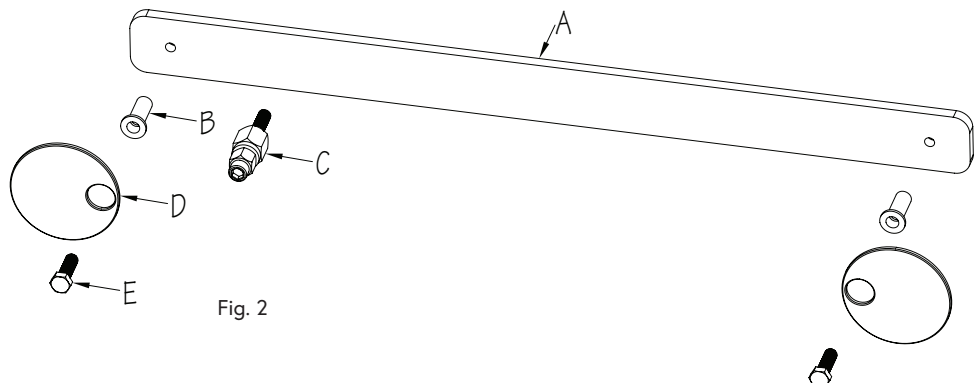


Fig. 2

Fastlane® Tread Steel Panel Vinyl Liner Pool Mounting Kit Supplemental Guide



Installation Instructions

1. The Fastlane® Tread and Grab Bar Mounting Brackets will serve as a template to trace the holes that need to be drilled into the steel pool wall in the desired Fastlane Tread mounting location.

The Fastlane Tread Mounting Bracket (A) MUST be positioned so that marking, engraved into the bracket, sits 6" (152mm) above the finished pool floor. Be sure that the template is level and use duct tape to temporarily adhere the template to the pool wall. Mark the center points of the two Thru-Wall holes (B) and trace outlines of the two mounting holes (C). Use a 3" (76mm) hole saw to cut the holes for the Thru-Walls and a 17/32" (13,5mm) drill bit to drill the mounting holes (Fig. 3)

Center the Grab Bar Mounting Bracket (D) above the Fastlane Tread bracket. Position so that the "Waterline" marking (E), engraved into the bracket, sits along the pool's expected waterline. Be sure that the template is level and use duct tape to temporarily adhere the template to the pool wall. Trace the outlines of the two mounting holes (F) and use a 17/32" (13,5mm) drill bit to drill holes (Fig. 3).

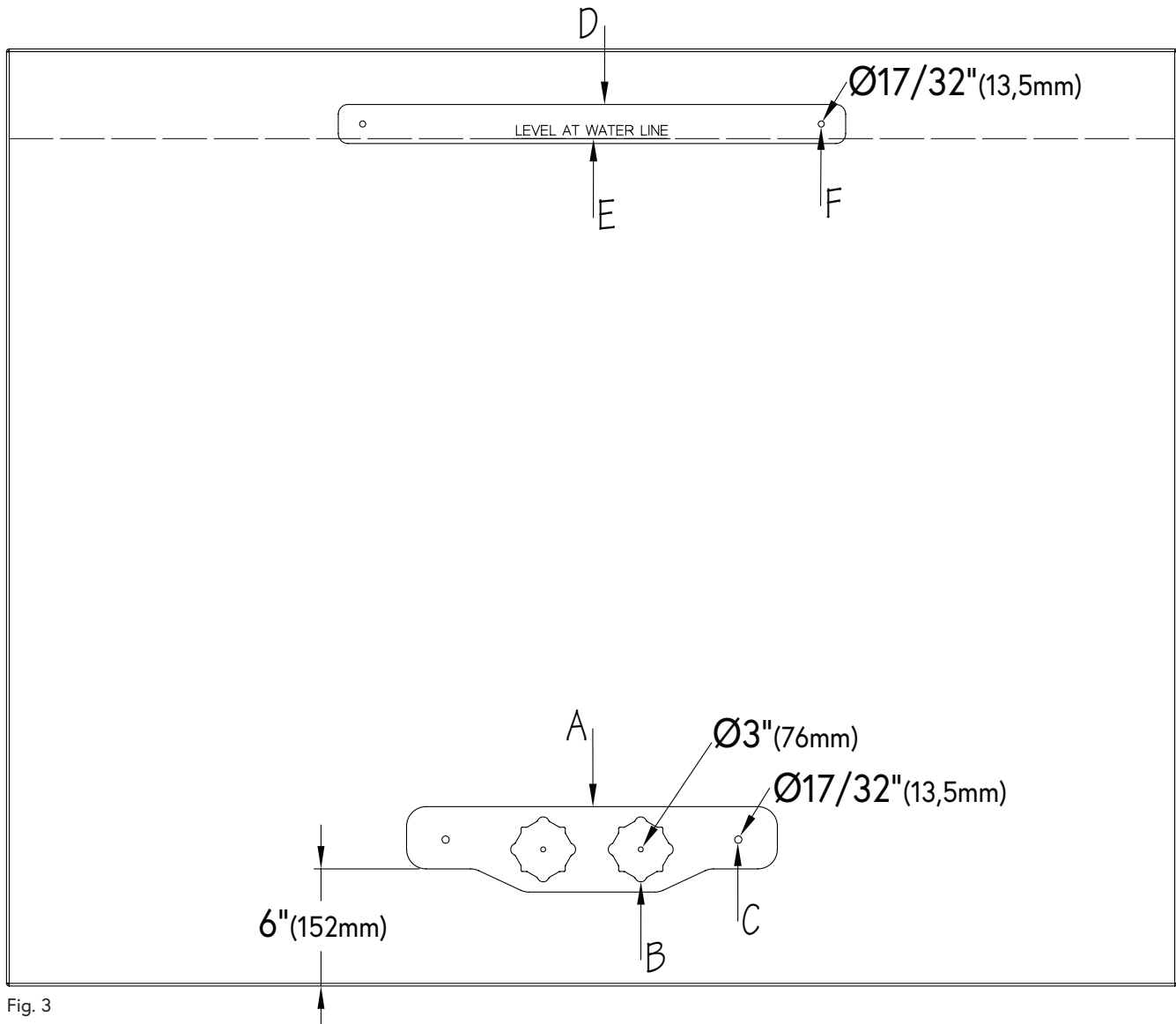


Fig. 3

Fastlane® Tread Steel Panel Vinyl Liner Pool Mounting Kit Supplemental Guide



2. On the inside of the pool, insert the Star Thru-Wall Fittings (A) through the holes cut out in the pool wall, making sure the holes around the perimeter of the fitting are oriented in the 12, 3, 6, and 9 o'clock positions as shown.

Thread the Locknuts (B) onto the fittings from the backside of the pool wall. Apply Teflon tape or sealant to the threads of the FSlip x MPT Adapters (C) and then thread the Adapters into the Star Thru-Wall Fittings (Fig. 4).

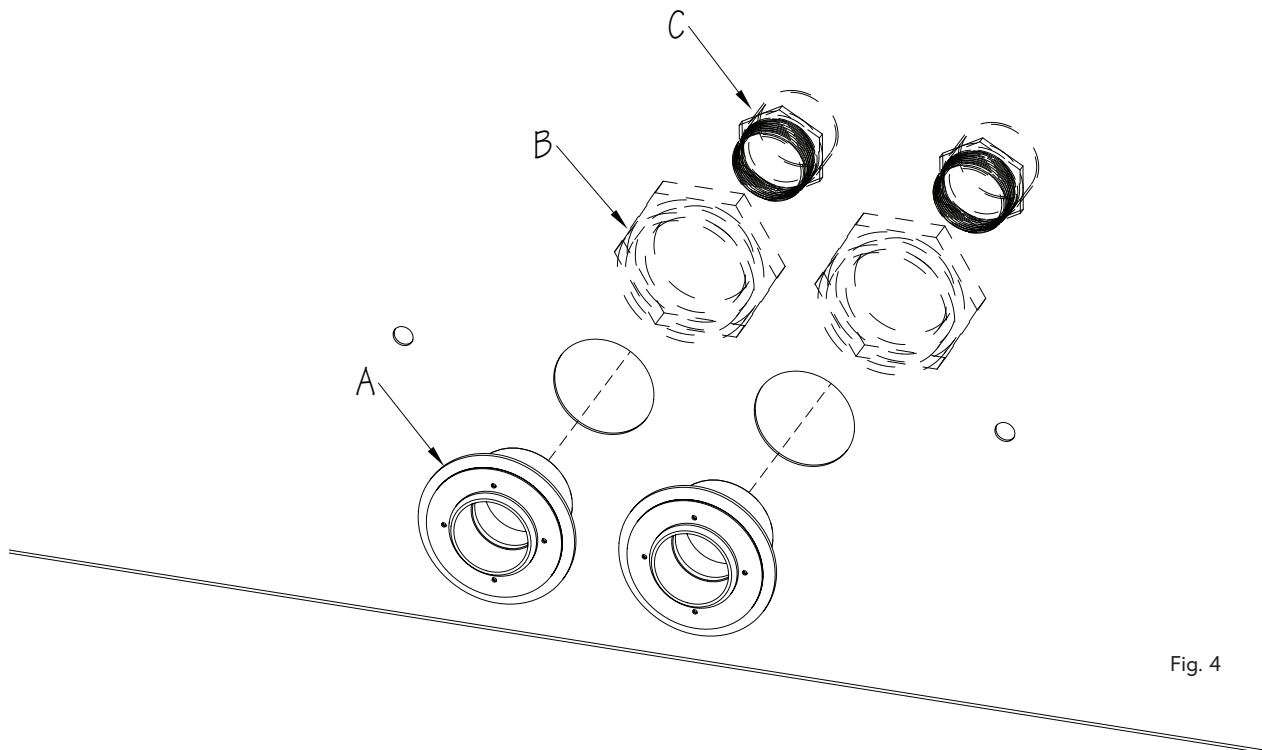


Fig. 4

3. A Rivet Nut Tool (A) is provided for installing the Rivet Nuts (B) into the pool wall, which serve as threaded inserts for the mounting system. Thread the nut fully onto the tool (Fig. 5).

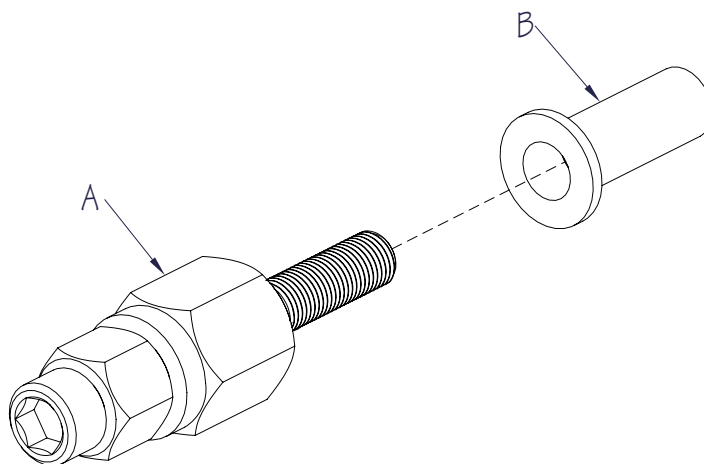


Fig. 5

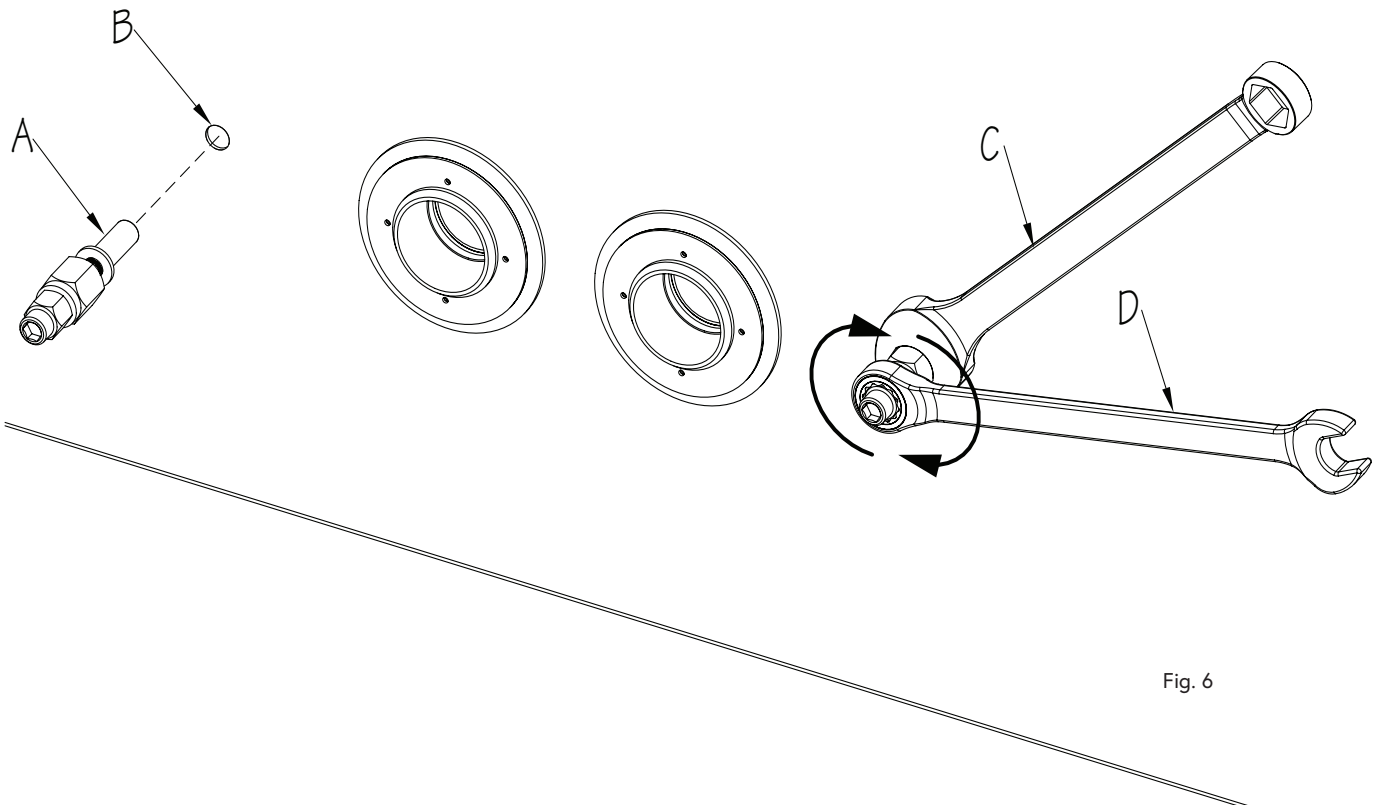
Fastlane® Tread Steel Panel Vinyl Liner Pool Mounting Kit Supplemental Guide



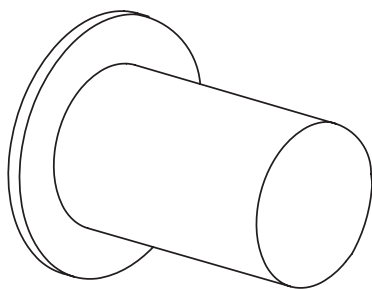
4. A 7/8" (22mm) wrench and 11/16" (17-18mm) Ratchet Wrench are required to install the Rivet Nuts.

Insert the Rivet Nut (A) into the mounting hole (B) so that the flange of the nut is resting against the pool wall. While holding the large nut on the Rivet Nut Tool as straight as possible with a 7/8" wrench (C), tighten the smaller nut on the tool using an 11/16" ratchet wrench. Tightening this nut will collapse the rivet, creating a backside flange that secures the rivet to the pool wall. Once this flange is visible from the backside of the pool wall, the rivet has been fully installed (Fig. 6).

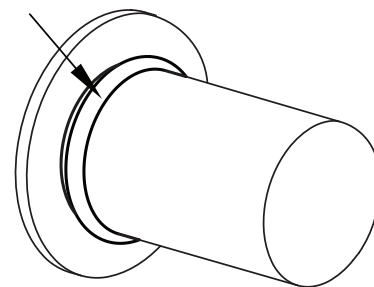
Repeat this procedure for all 17/32" (13,5mm) mounting holes. There are four total mounting holes, two for the Fastlane® Tread and two for the Grab Bar.



RIVET NUT NO FLANGE PRE-INSTALL



RIVET NUT WITH FLANGE POST-INSTALL



Fastlane® Tread Steel Panel Vinyl Liner Pool Mounting Kit Supplemental Guide



5. The location of the Hydraulic Power Unit (A) should be determined at this point in the installation. Unroll the lengths of 1-1/2" (38mm) flexible PVC Pipe (B) from the back of the Fastlane® Tread mounting kit to the Hydraulic Power Unit. **The conduit run MUST travel above the pool's waterline.** Any bends in the pipe MUST be gradual sweeps and not sharp bends to allow the hydraulic hoses to be easily fed through each conduit. Glue the PVC Pipes (B) into the Adapters (C) attached to the Star Thru-Wall Fittings (Fig. 7).

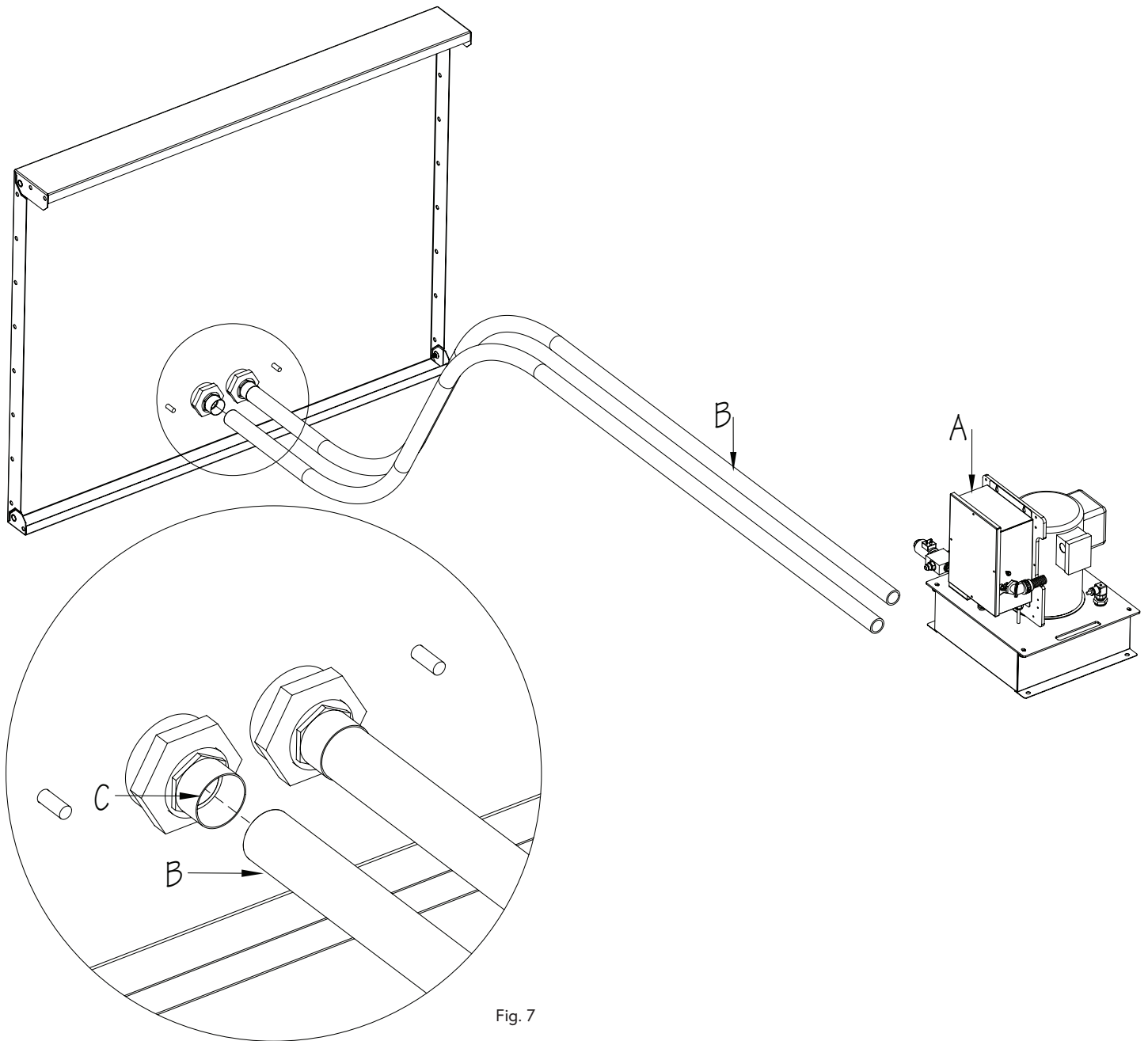
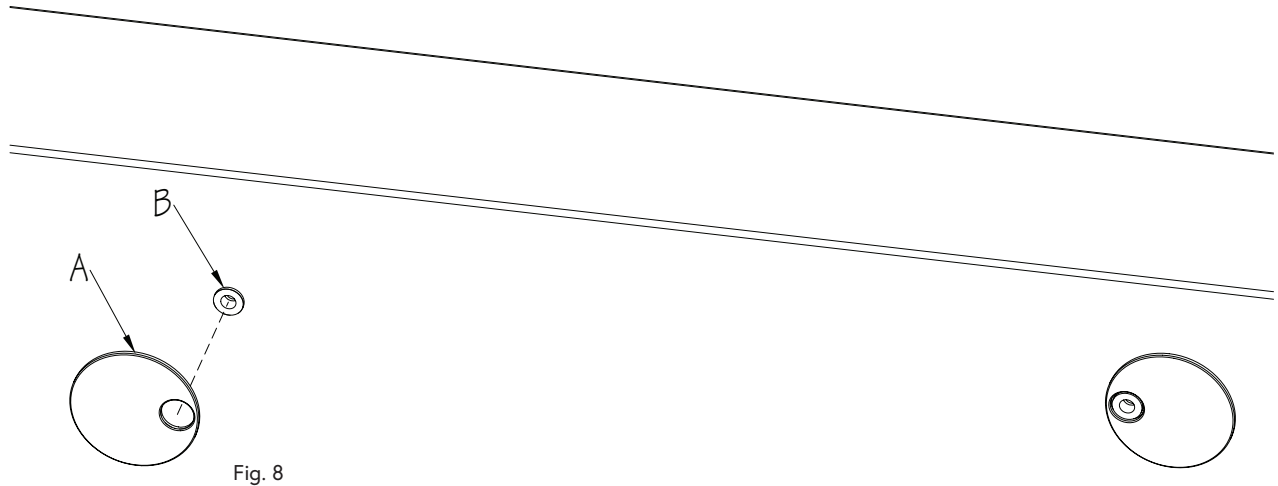


Fig. 7

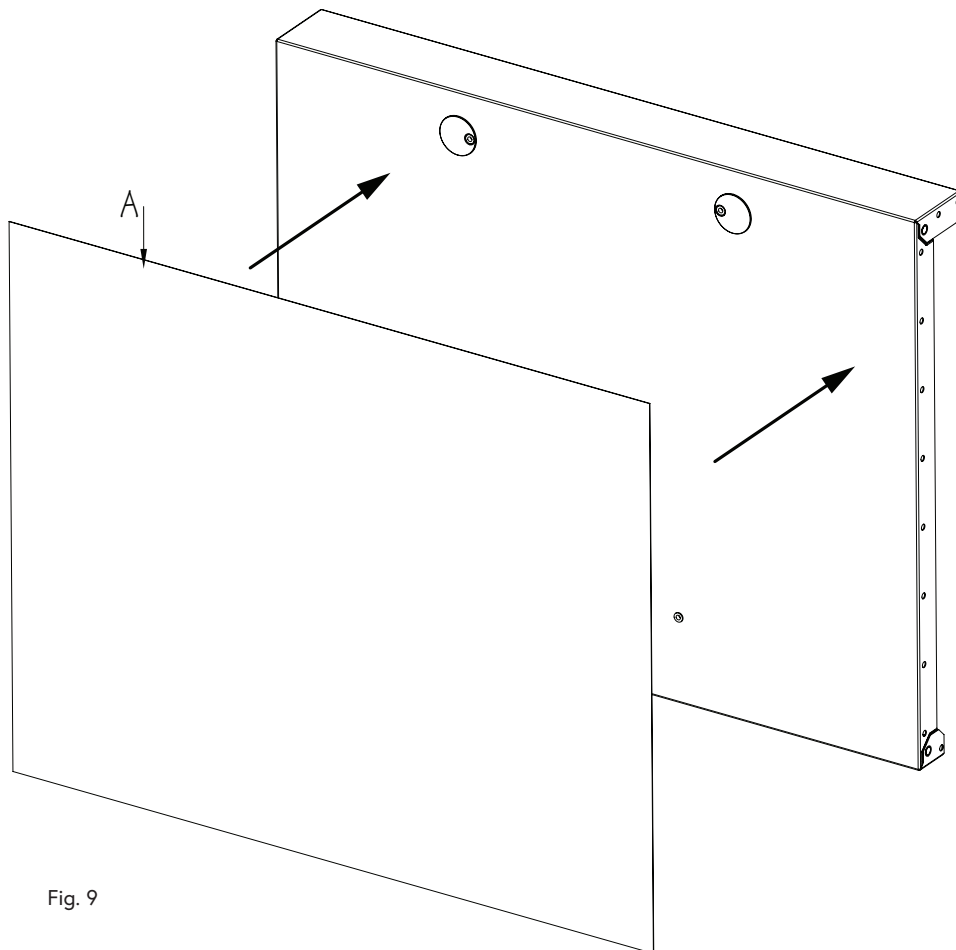
Fastlane® Tread Steel Panel Vinyl Liner Pool Mounting Kit Supplemental Guide



6. Prior to installing the pool liner, Grab Bar Spacers MUST be adhered to the pool wall to protect the liner from being punctured by the Rivet Nuts once the grab bar is installed. Use the silicone provided to adhere the spacer (A) to the pool wall over the Rivet Nut (B). The spacer should end up flush with the flange of the Rivet Nut (Fig. 8).



7. The pool Liner (A) should be installed at this time (Fig. 9).



Fastlane® Tread Steel Panel Vinyl Liner Pool Mounting Kit Supplemental Guide



8. Prior to cutting holes in the pool liner, water should be added to the pool to weigh down the liner.

Locate the Star Thru-Wall Fittings behind the liner. Position the Thru-Wall Faceplate (A) against the liner onto the fitting, making sure the holes in the Faceplate are aligned with the holes in the fitting. Use a scratch awl to poke out the (4) holes in the liner (B). Secure the Faceplate to the fitting with the Faceplate Screws (C). Use a hand screwdriver when installing screws to avoid cracking the Faceplate.

Once the Faceplates are installed, use a sharp utility knife to cut out the round holes in the liner (D) using the inside of the Faceplate as a template (Fig. 10).

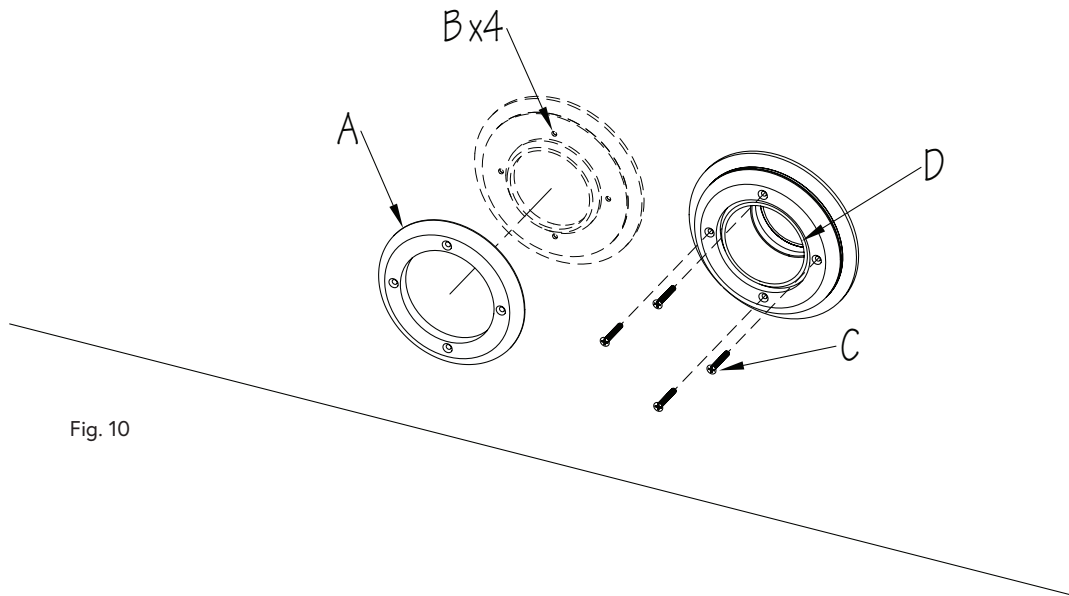


Fig. 10

9. Remove the Faceplates (A) after the holes have been cut in the liner. Spread a thin layer of silicone on the face of the black gasket (B) that is adhered to the Star Thru-Wall Fitting (behind the liner). Spread a thin layer of silicone on the back of the Faceplate (C). Re-attach the Faceplate and allow the silicone to cure (Fig. 11).

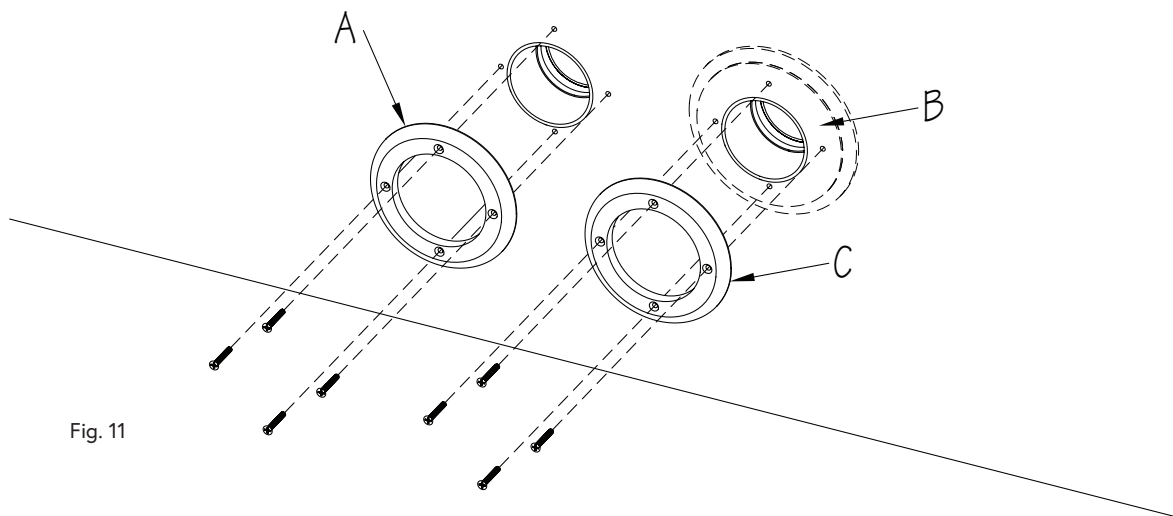


Fig. 11

Fastlane® Tread Steel Panel Vinyl Liner Pool Mounting Kit Supplemental Guide



10. Locate the Rivet Nuts (A) behind the liner. Use a sharp utility knife to cut out the round holes in the liner using the Rivet Nut holes as a template.

Thread the Stud (B) into the Rivet Nut so that 1-1/4" \pm 1/8" (32mm \pm 3mm) of the stud is protruding into the pool. Spread a thin bead of silicone on the face of the Rubber Washer (C) and then install the washer over the Stud, adhering to the liner (Fig. 12).

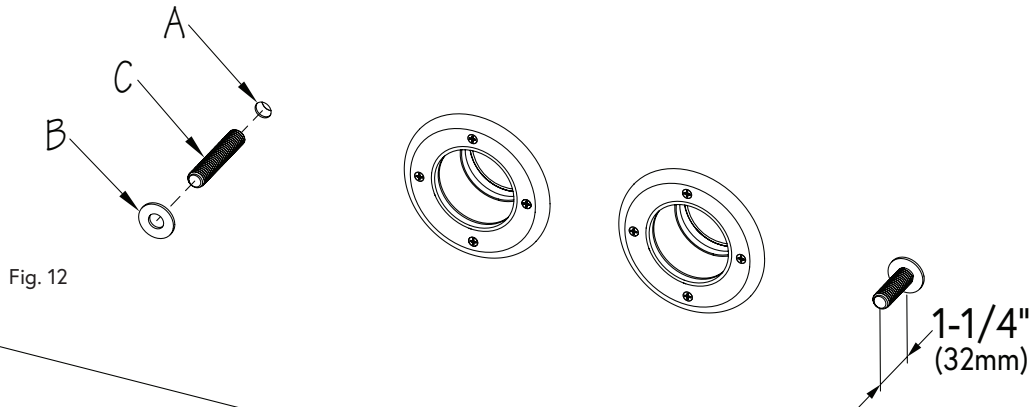


Fig. 12

11. Apply Teflon sealant to the threads of each Bushing Reducer (A) and then thread them into the Star Thru-Wall fittings (B) (Fig. 13).

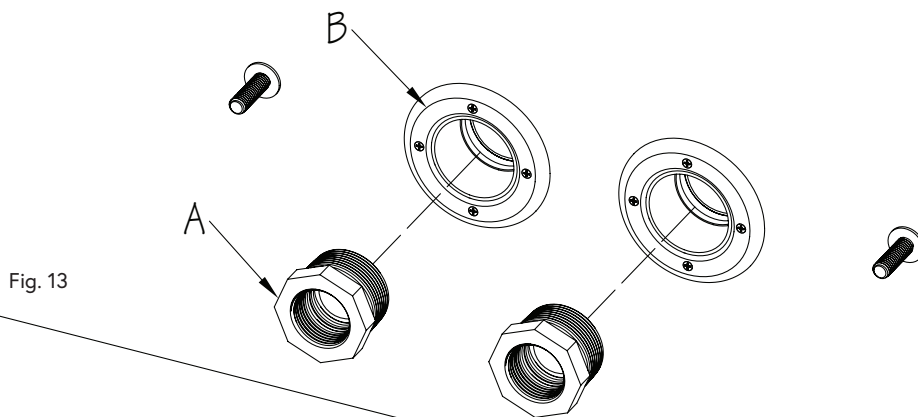


Fig. 13

Fastlane® Tread Steel Panel Vinyl Liner Pool Mounting Kit Supplemental Guide



12. At the top of the pool wall, locate the Rivet Nuts (A), behind the liner, from the grab bar mounting kit. Use a sharp utility knife to cut out the round holes in the liner using the Rivet Nut holes as a template (Fig. 14).

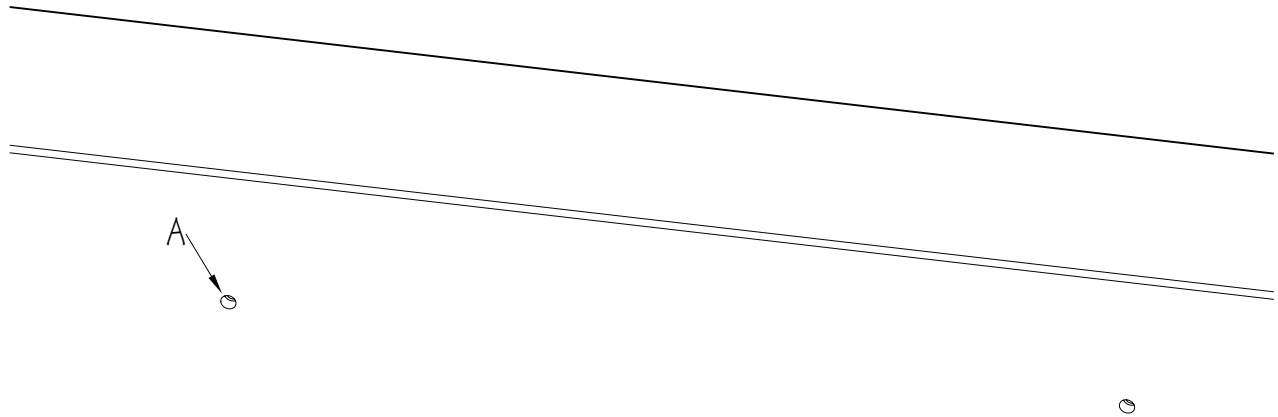


Fig. 14

13. The remaining mounting kit components will be installed when the Fastlane® Tread is being mounted to the pool wall.
Refer to the Fastlane Tread Owner's Manual.