

Fastlane® Tread Gunite Pool Mounting Kit Supplemental Guide



Description

The mounting kits for the Fastlane® Tread and Grab Bar are embedded into the pool wall and **MUST** be installed during the construction of the pool. The mounting kit serves as both a mounting system and connection point for the PVC conduits that run under the pool deck to the remotely located Hydraulic Power Unit.

Mounting Kit Parts Diagram

FASTLANE TREAD MOUNTING KIT

PART	QTY	DESCRIPTION
A	1	Mounting Bracket
B	2	PVC Coupling
C	2	2" (51mm) x 1-1/2" (38mm) Bushing Reducer
D	2	1-1/2" (38mm) PVC Pipe (supplied locally)
E	2	Threaded Rod
F	2	Bonding Clamp
G	2	Liquid Tight Fitting
H	2	2" (51mm) x 1" (25mm) Bushing Reducer
I	2	Flat Washer
J	2	Lock Washer
K	2	Jam Nut
L	1	Mounting Template (not shown)

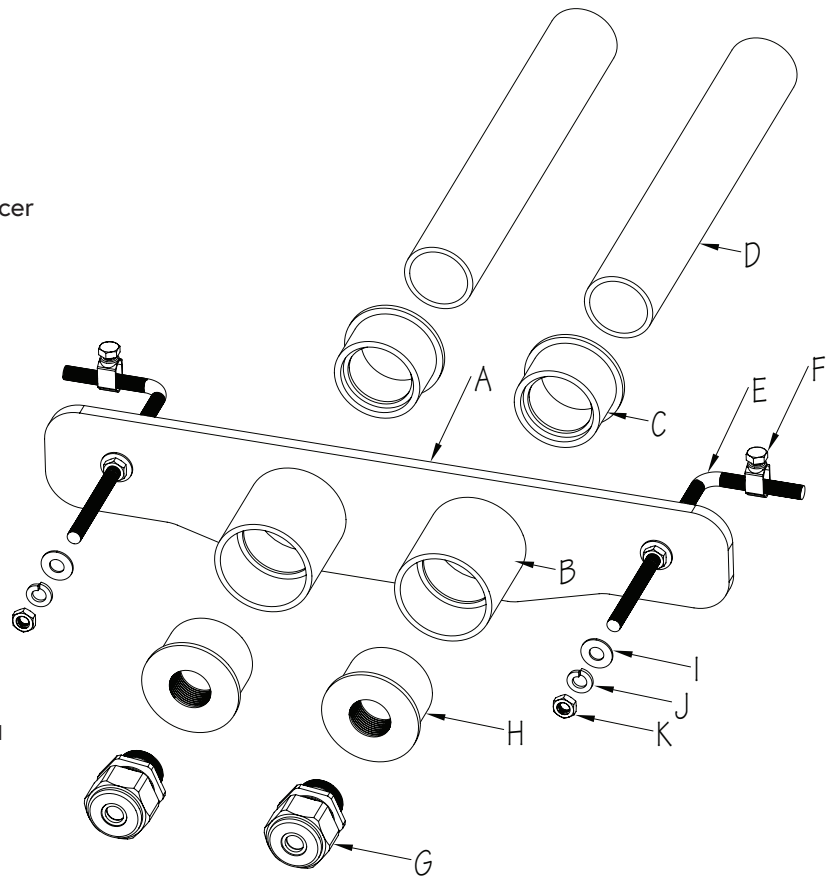


Fig. 1

GRAB BAR MOUNTING KIT

PART	QTY	DESCRIPTION
A	1	Mounting Bracket
B	2	Threaded Rod
C	2	Bonding Clamp
D	2	Coupler
E	2	Sacrificial Bolt
F	2	Hex Head Bolt

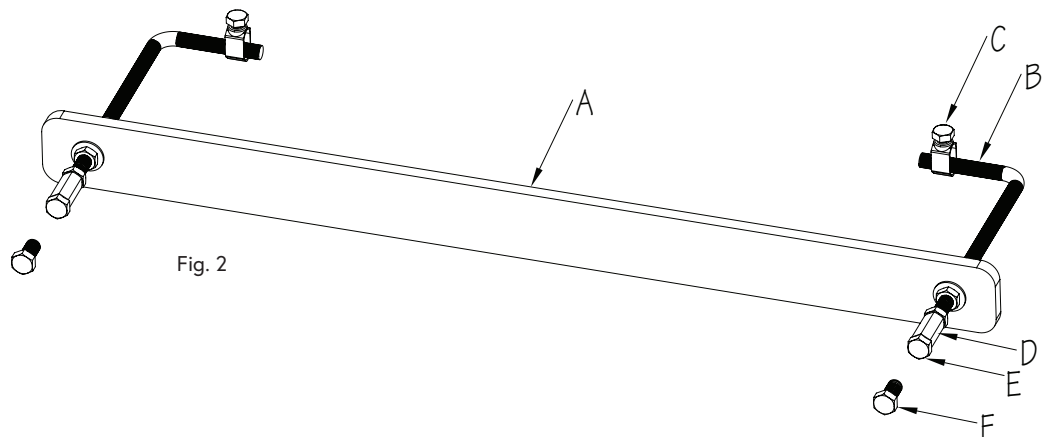


Fig. 2

Fastlane® Tread Guniting Pool Mounting Kit Supplemental Guide

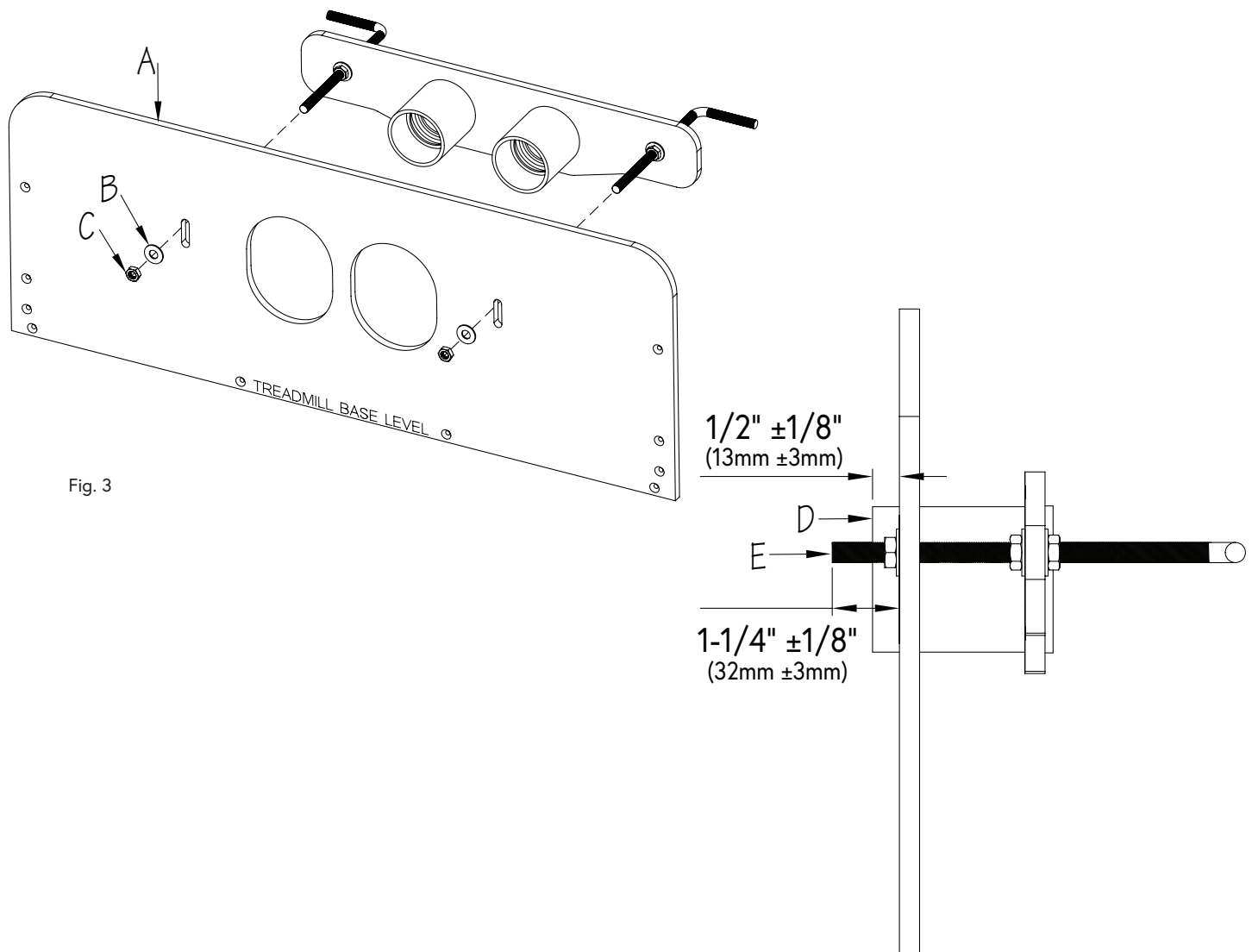


Installation Instructions

1. The Mounting Template provided is intended to ensure proper placement of the mounting kit in the pool wall. **The front of the template represents the finished pool wall.** Guniting will be shot to the back of the 3/8" (9,5mm) template and then removed prior to the finish coat application.

Attach the Mounting Template (A) to the Mounting Kit Assembly using the Flat Washers (B) and Jam Nuts (C). Prior to tightening Jam Nuts, ensure that the Threaded Rods are at the top of slotted holes in the template. The PVC Couplings (D) should extend $1/2" \pm 1/8"$ (13mm \pm 3mm) beyond the front of the template (finished pool wall) and Threaded Rods (E) $1-1/4" \pm 1/8"$ (32mm \pm 3mm) beyond the template (Fig. 3)

NOTE: The template can be adjusted to account for the thickness of the finish coat.



Fastlane® Tread Guniting Pool Mounting Kit Supplemental Guide



2. To ensure the Fastlane® Tread Mounting Kit is positioned at the correct height, it is recommended to pour a level concrete slab (A) in front of the wall in which the Fastlane Tread will be mounted. This will serve as the finished floor. (Fig. 4A).

Position the base of the Mounting Template (B) onto the finished floor so that the front surface of the template is flush with the expected finished pool wall. Once in position, secure the Threaded Rods (C) to the Rebar Grid (D) using rebar ties (Fig. 4B). Refer to the detail drawing on the following page to supplement these instructions.

The Grab Bar Mounting Kit should be centered above the Fastlane Tread Mounting Kit. Position the Bracket (E) so that the "Waterline" marking (F), engraved into the bracket, sits along the pool's expected waterline. In addition, the Coupler (G) should be flush with the expected finished pool wall. The Sacrificial Bolt (H) will be removed after the finish coat application. Once in position, secure the Threaded Rods (C) to the Rebar Grid (D) using rebar ties (Fig. 4C). Refer to the detail drawing on the following page to supplement these instructions.

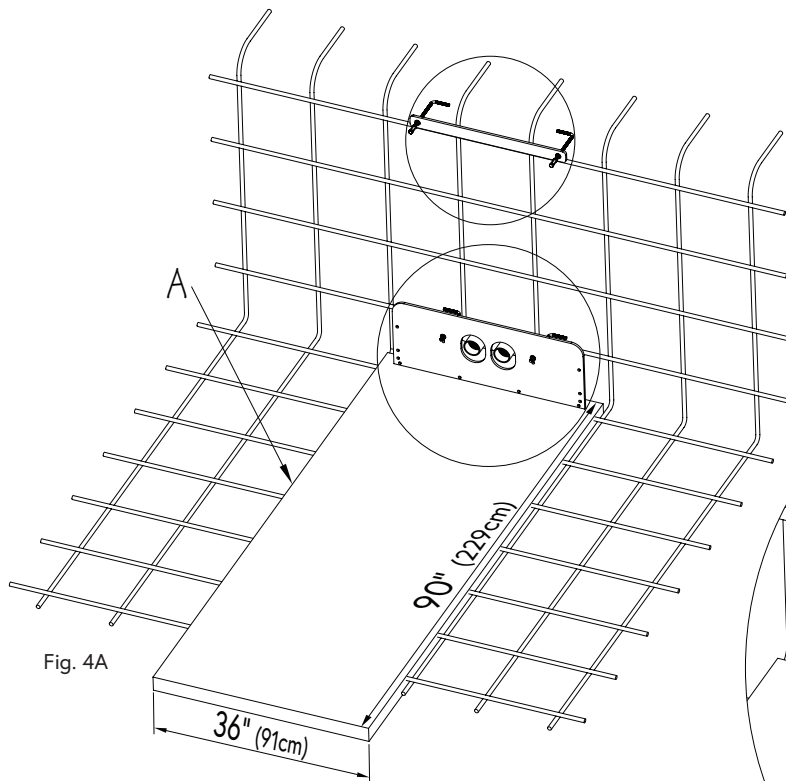


Fig. 4A

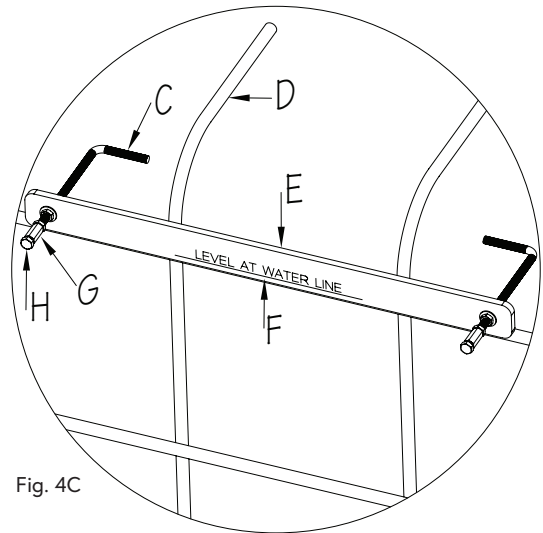


Fig. 4C

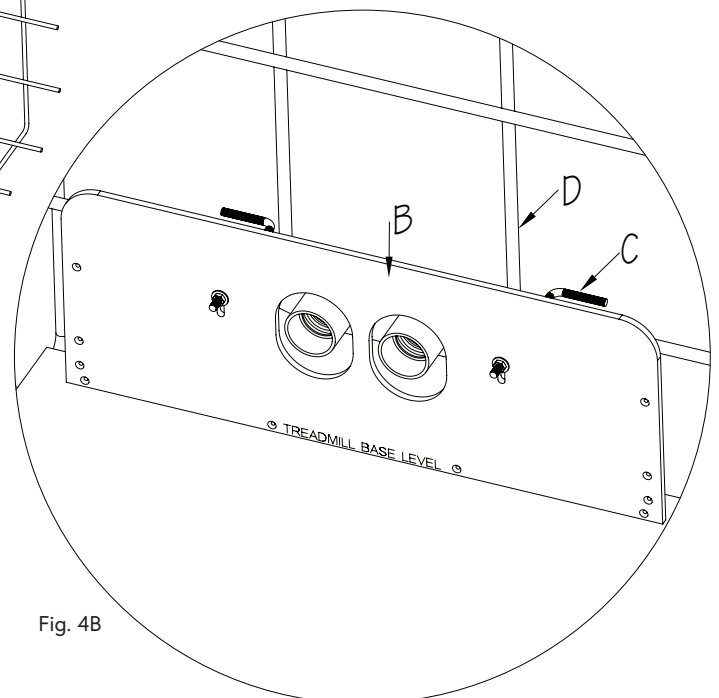


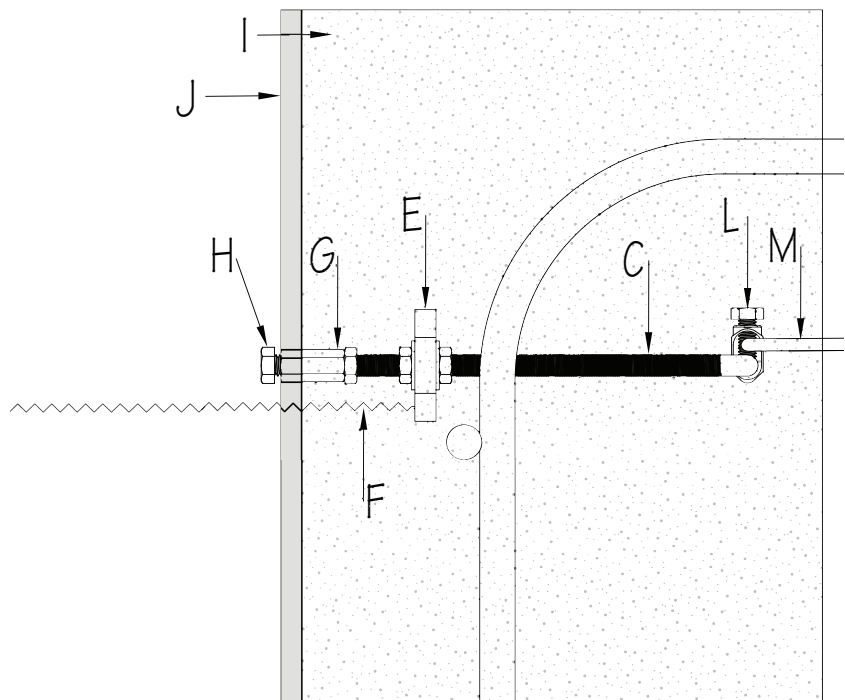
Fig. 4B

Fastlane® Tread Gunite Pool Mounting Kit Supplemental Guide



MOUNTING KIT INSTALLATION DETAIL

PART	DESCRIPTION
A	Concrete Slab (finished floor)
B	Mounting Template
C	Threaded Rod
D	Rebar Grid
E	Grab Bar Mounting Bracket
F	Waterline
G	Coupler
H	Sacrificial Bolt
I	Gunite
J	Finish Coat
K	1-1/2" (38mm) PVC Pipe
L	Bonding Clamp
M	#8 Solid Copper Wire



IMPORTANT NOTES:

- Pool wall **MUST** be sharp with a max radius of 4" (102mm)
- Any radius in the pool wall will require a modification to the End Covers of the Fastlane Tread

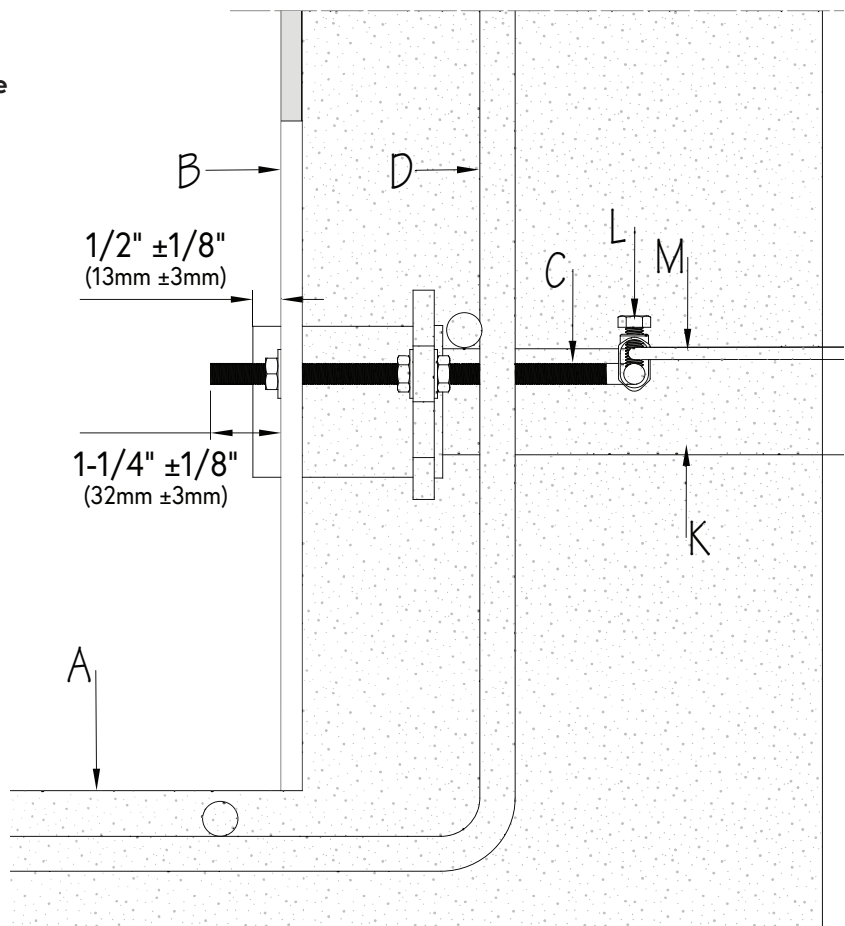


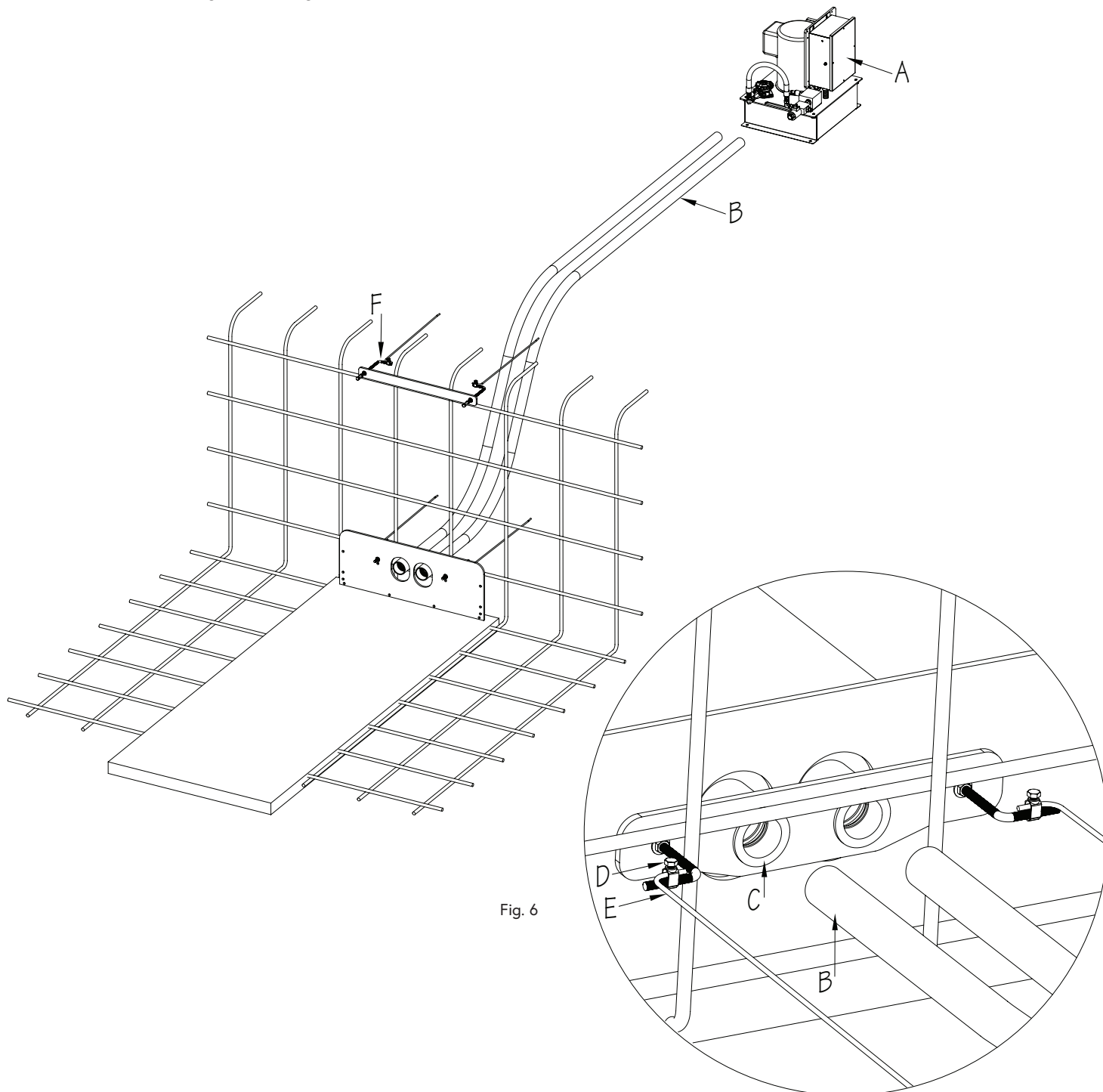
Fig. 5

Fastlane® Tread Guniting Pool Mounting Kit Supplemental Guide



3. The location of the Hydraulic Power Unit (A) should be determined at this point in the installation. Unroll the lengths of 1-1/2" (38mm) flexible PVC Pipe (B) from the back of the Fastlane® Tread mounting kit to the Hydraulic Power Unit. **The conduit run MUST travel above the pool's waterline.** Any bends in the pipe MUST be gradual sweeps and not sharp bends to allow the hydraulic hoses to be easily fed through each conduit. Glue the PVC Pipes (B) into the Reducers (C) on the backside of the mounting bracket (Fig. 6).

The rods attached to the bracket MUST be tied into the pool's bonding grid. Install a Bonding Clamp (D) onto each rod. Attach a #8 Solid Copper Wire (E) to each Bonding Clamp and then run these wires to a connection that is incorporated into the pool's bonding grid. In most cases this will be a connection in the rebar. Repeat for the rods attached to the Grab Bar Mounting Kit (F) (Fig. 6).



Fastlane® Tread Gunite Pool Mounting Kit Supplemental Guide



IF THE FASTLANE TREAD IS BEING RECESSED INTO THE POOL FLOOR, REFER TO STEPS 4.3 - 4.6.

- 4.1 Prior to shooting gunite, it is CRITICAL that the openings of the PVC Couplings (A), Threaded Rods (B), and Sacrificial Bolts (C) are covered. Gunite cannot be embedded in these areas (Fig. 7).

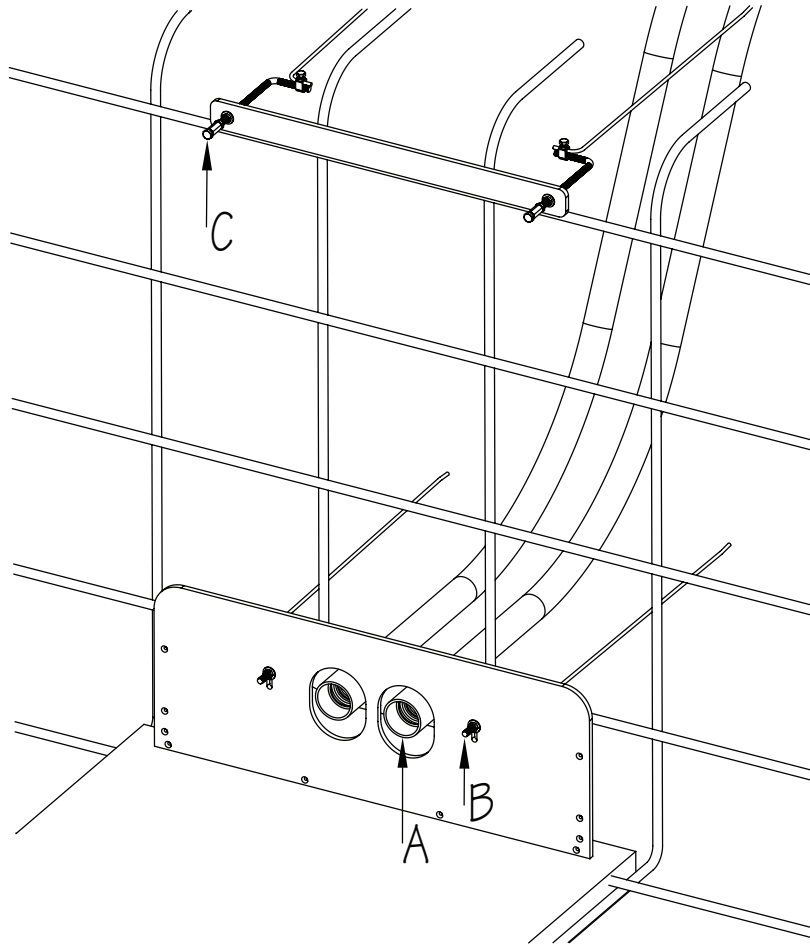


Fig. 7

Fastlane® Tread Guniting Pool Mounting Kit Supplemental Guide



4.2 After verifying that the Mounting Kits are positioned properly (per the specifications in Step 2), bonding connections and conduits are secured, and Coupling openings/Threaded Rods/Sacrificial Bolts are covered, guniting can be shot. It is important to closely monitor the mounting kits during this process to ensure they remain in position.

Once the guniting is shot up to the back of the template (A), it should be removed prior to the finish coat application. The Sacrificial Bolts (B) can be removed once the finish coat cures (Fig. 8).

Proceed to STEP 5.

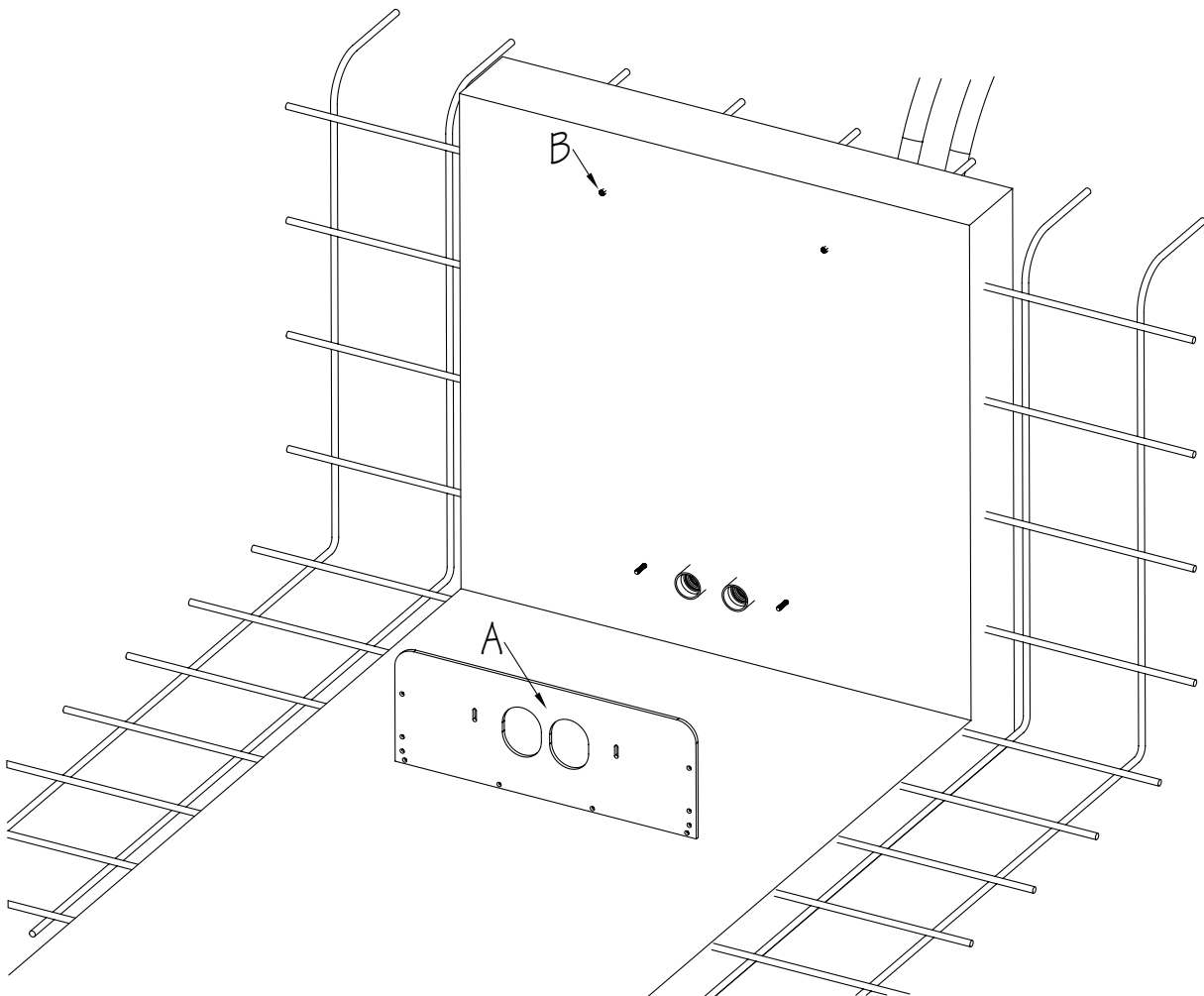


Fig. 8

Fastlane® Tread Gunite Pool Mounting Kit

Supplemental Guide



4.3 If the Fastlane® Tread is being recessed into the pool floor, construct a mold using plywood (A) and lumber (B) as shown in Figure 9. The intent of the mold is to form the recessed area in the pool floor during the gunite application.

The height of the mold allows for a finish coat of approximately 5/8" (15mm) outside the recessed area to become flush with the side decks of the Fastlane Tread. It is recommended to cut lifting holes (C) into the top sheet of plywood to assist with the removal of the mold.

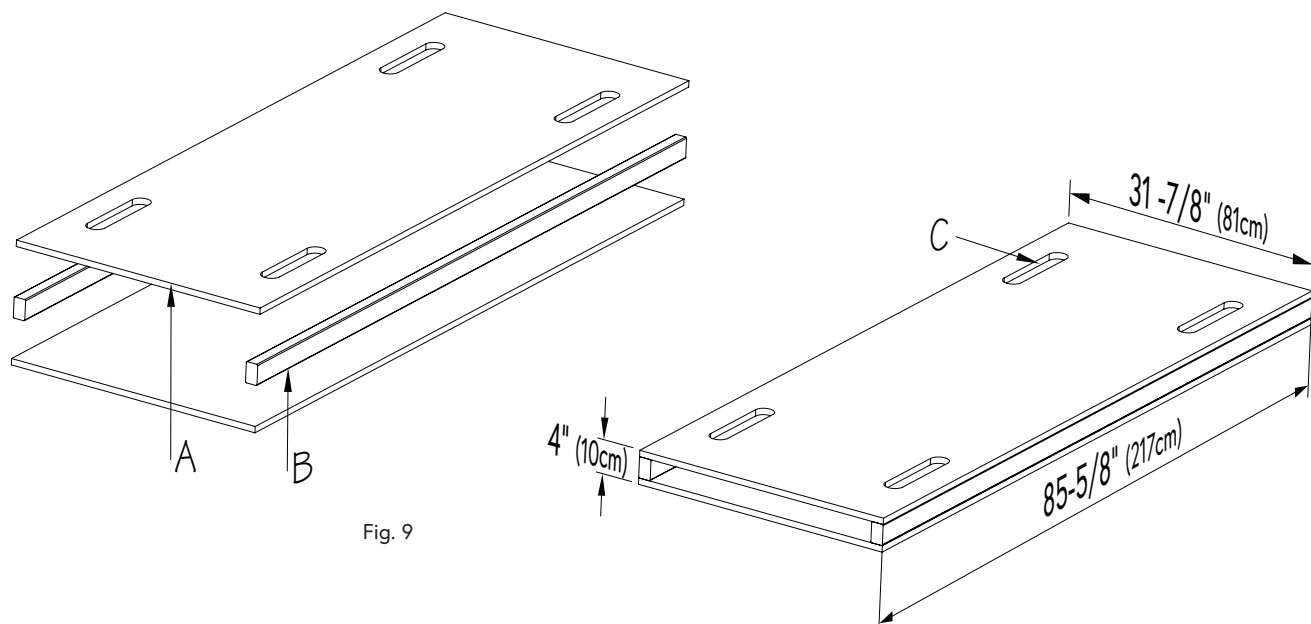


Fig. 9

4.4 Position the mold (A) onto the finished floor and up against the Mounting Template (B). The template can be attached to the mold if desired (Fig. 10).

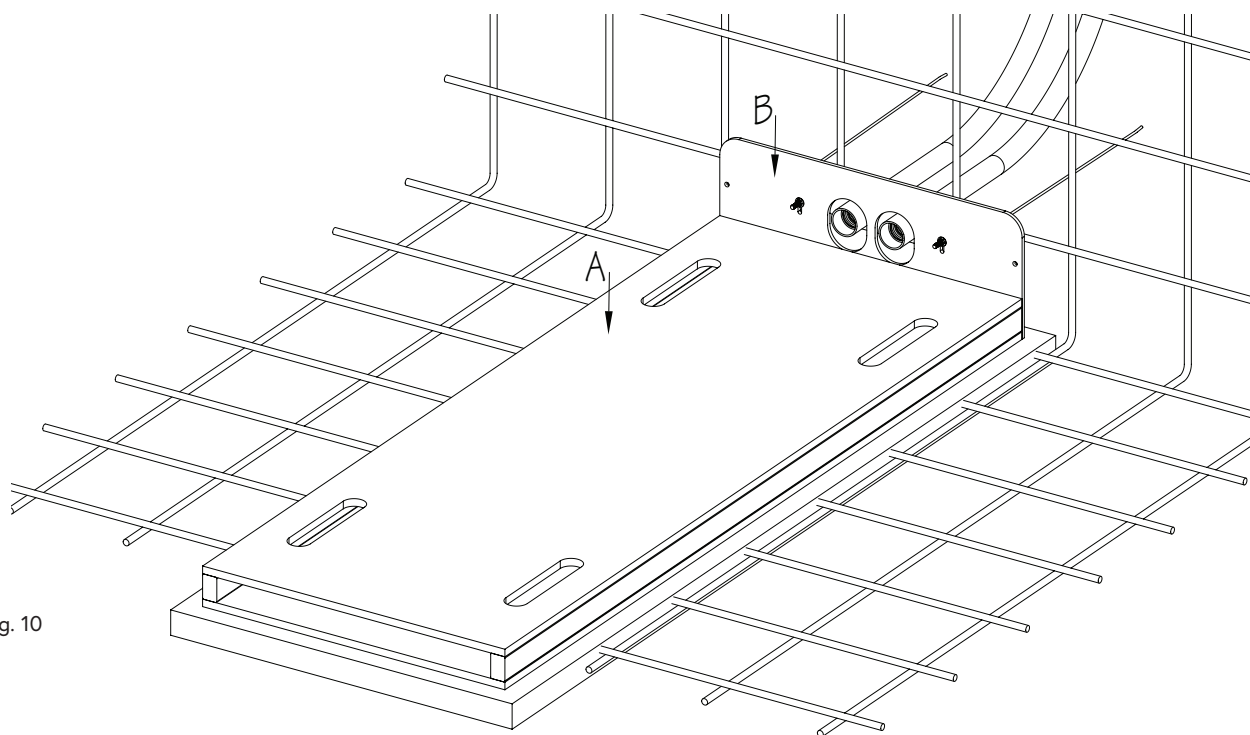


Fig. 10

Fastlane® Tread Gunite Pool Mounting Kit Supplemental Guide



4.5 Prior to shooting gunite, it is CRITICAL that the openings of the PVC Couplings (A), Threaded Rods (B), and Sacrificial Bolts (C) are covered. Gunite cannot be embedded in these areas (Fig. 11).

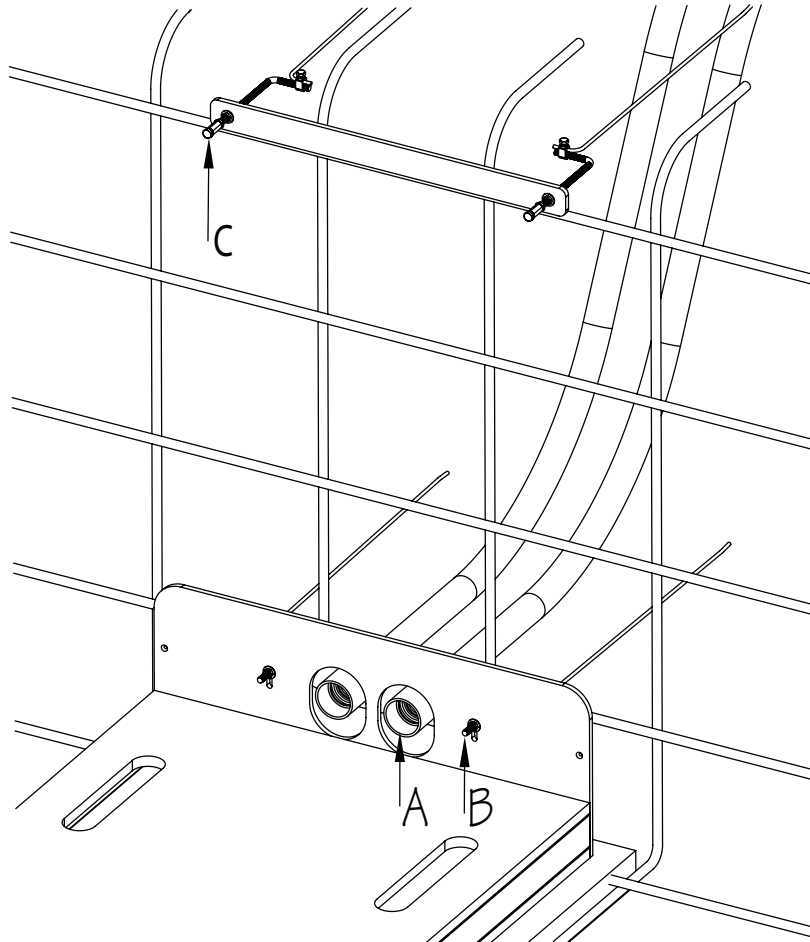


Fig. 11

Fastlane® Tread Gunite Pool Mounting Kit Supplemental Guide



4.6 After verifying that the Mounting Kits are positioned properly (per the specifications in Step 2), bonding connections and conduits are secured, and Coupling openings/Threaded Rods/Sacrificial Bolts are covered, gunite can be shot. It is important to closely monitor the mounting kits during this process to ensure they remain in position.

Once the gunite is shot up to the back of the template and around the mold, remove the template (A) and mold (B) prior to the finish coat application. The Sacrificial Bolts (C) can be removed once the finish coat cures (Fig. 12).

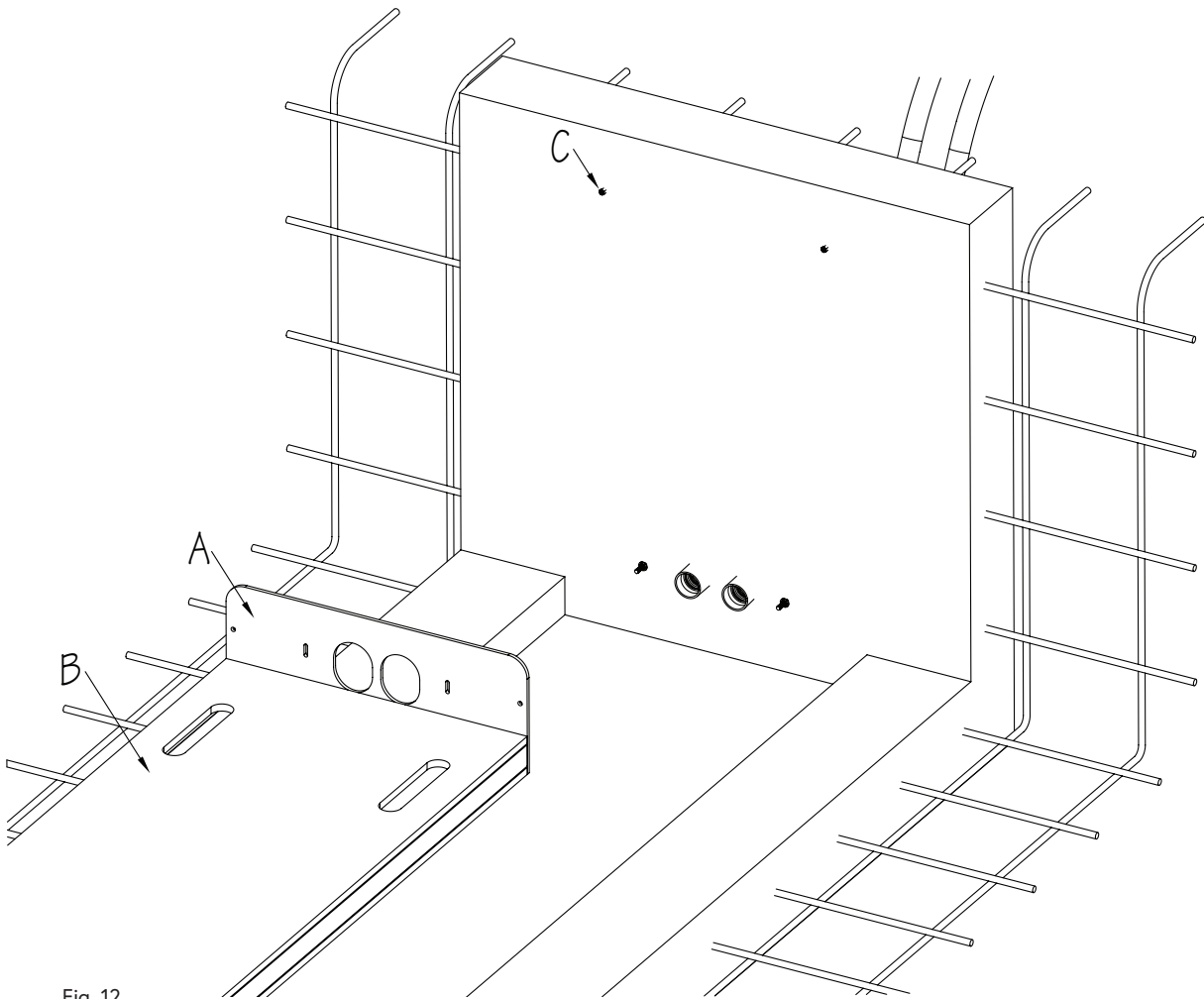


Fig. 12

Fastlane® Tread Guniting Pool Mounting Kit Supplemental Guide



5. Glue the Bushing Reducers (A) into the Couplings (B) (Fig. 13).

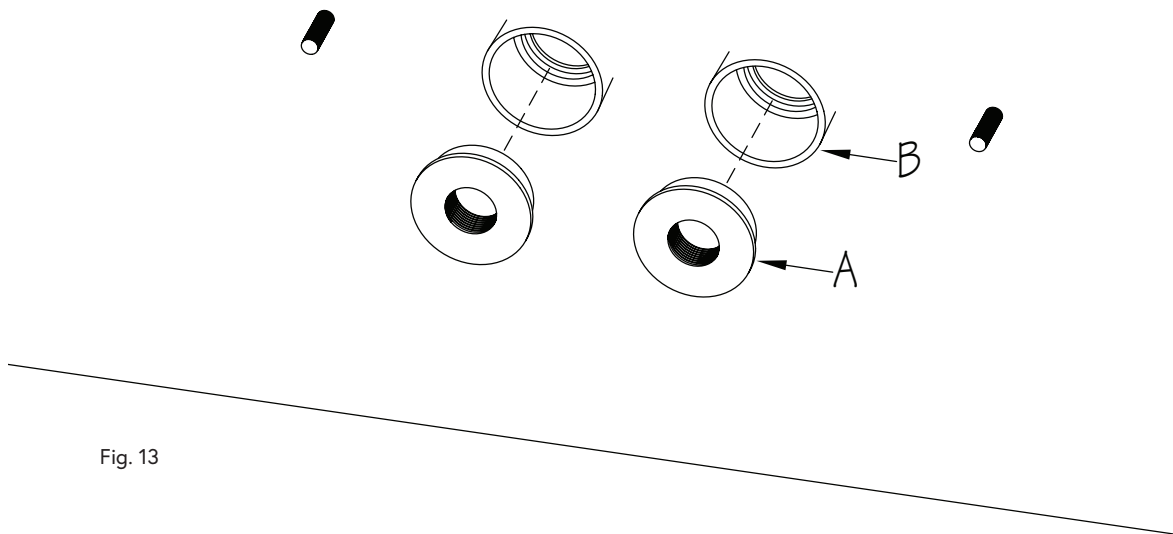


Fig. 13

6. The remaining mounting kit components will be installed when the Fastlane® Tread is being mounted to the pool wall. **Refer to the Fastlane Tread Owner's Manual.**