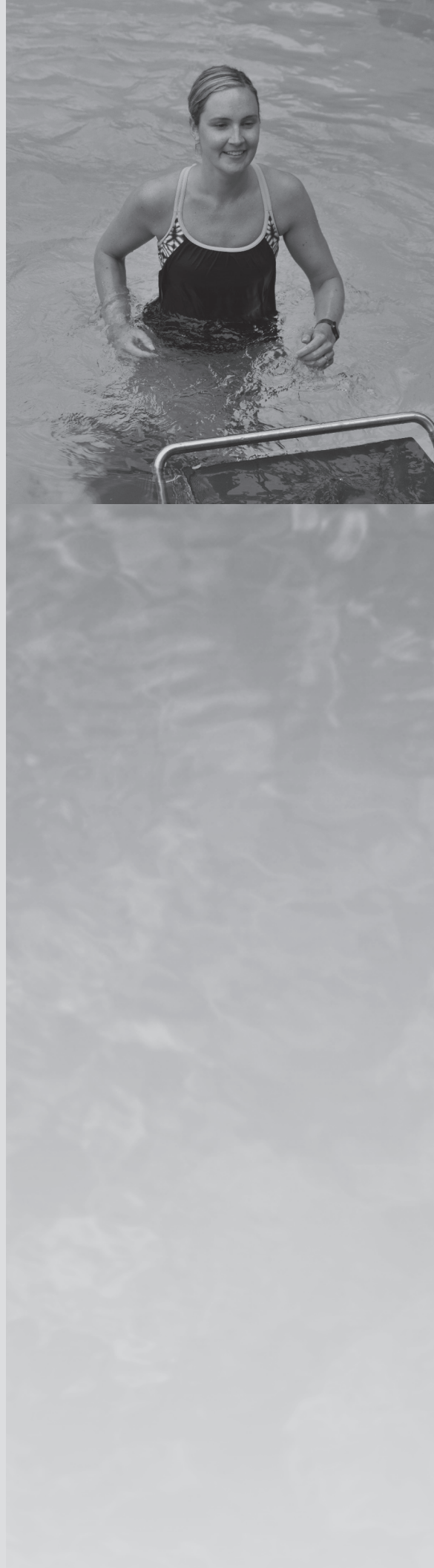




# Fastlane® Tread

OWNER'S MANUAL



# NO DIVING

**DANGER: DIVING MAY  
RESULT IN SERIOUS  
INJURY OR DEATH.**



## IMPORTANT SAFETY INSTRUCTIONS CONSIGNES DE SÉCURITÉ IMPORTANTES

**READ, FOLLOW, AND UNDERSTAND ALL INSTRUCTIONS  
LIRE, SUIVRE ET COMPRENDRE TOUTES LES INSTRUCTIONS**

### **Manufacturers Safety Instructions**

---

- DANGER:** BEFORE INSTALLING OR USING THIS PRODUCT, READ, FOLLOW, AND UNDERSTAND ALL SAFETY INFORMATION. FAILURE TO DO SO CAN RESULT IN DAMAGE, INJURY, OR DEATH.
- DANGER:** AVANT D'INSTALLER OU D'UTILISER CE PRODUIT, VEUILLEZ LIRE, SUIVRE ET COMPRENDRE TOUTES LES INSTRUCTIONS DE SÉCURITÉ. LE NON-RESPECT DE CES INSTRUCTIONS POURRAIT ENTRAINER DES DOMMAGES, DES BLESSURES OU LA MORT.
- DANGER:** SERIOUS BODILY INJURY OR DEATH CAN RESULT IF THIS PRODUCT IS NOT INSTALLED OR USED CORRECTLY.
- DANGER:** DES BLESSURES CORPORELLES GRAVES, VOIRE LA MORT, PEUVENT SURVENIR SI CE PRODUIT N'EST PAS INSTALLÉ OU UTILISÉ CORRECTEMENT.
- WARNING:** This unit should be installed only per the manufacturer's instructions.  
Cette unité doit uniquement être installée conformément aux instructions du fabricant.
- WARNING:** This product must be installed in accordance with any applicable state and local codes. Consult the local building and health codes for more information.
- AVERTISSEMENT:** Ce produit doit être installé conformément à tout code local ou national applicable. Consultez les codes sanitaire et de construction locaux pour de plus amples informations.
- WARNING:** RISK OF ELECTRICAL SHOCK: All electrical connections should be made by a licensed electrician in accordance with all applicable national and local codes and ordinances.
- AVERTISSEMENT:** RISQUE D'ÉLECTROCUTION : tous les raccords électriques doivent être faits par un électricien agréé conformément à tous les codes et règlements électriques nationaux et locaux applicables.
- WARNING:** Before each use, examine the unit for damage or signs of wear. Do not use the product if found in this condition. Contact Endless™ Customer Service.
- AVERTISSEMENT:** Avant chaque utilisation, examinez l'unité pour vérifier tout signe d'usure ou de dégâts. N'utilisez pas ce produit si vous le trouvez dans cet état. Contactez le service clientèle Endless™ Pools
- WARNING:** This product contains moving parts. Moving parts and other features of this product can be dangerous. Do not put fingers or any other objects into moving parts of this product. Do not wear loose clothing or jewelry when using this product.
- AVERTISSEMENT:** Ce produit contient des pièces mobiles. Les pièces mobiles et autres fonctionnalités de ce produit peuvent être dangereuses. Ne mettez pas les doigts ou des objets dans les pièces mobiles de ce produit. Ne portez pas de vêtements lâches ou de bijoux en utilisant ce produit.

- WARNING:** Never operate the unit without reading and completely understanding the results of any operational change you request from the controller.
- AVERTISSEMENT:** Ne faites jamais faire fonctionner l'unité sans lire et comprendre entièrement les résultats de tout changement opérationnel que vous avez effectué via le contrôleur.
- WARNING:** Never leave an operating treadmill unattended.
- AVERTISSEMENT:** Ne laissez jamais un tapis roulant en fonctionnement sans surveillance.
- WARNING:** Never mount or dismount the treadmill while the belt is moving.
- AVERTISSEMENT:** Ne montez, ni descendez jamais du tapis roulant lorsque le tapis est en mouvement.
- WARNING:** Never adjust the tension of the belt. The belt tension is factory set. Tightening the belt may damage the treadmill which could result in serious bodily injury.
- AVERTISSEMENT:** N'ajustez jamais la tension de la courroie. La tension du tapis de course est réglée en usine. Serrer la courroie peut endommager le tapis de course ce qui pourrait entraîner des blessures corporelles graves.
- WARNING:** Use caution while participating in other activities while using this product; such as watching television, reading, etc. These distractions may cause you to lose balance or stray from walking in the center of the belt; which may result in bodily injury.
- AVERTISSEMENT:** faites particulièrement attention lorsque vous faites d'autres activités tout en utilisant ce produit, comme regarder la télévision, lire, etc. Ces distractions peuvent vous faire perdre l'équilibre ou vous écarter du centre du tapis, ce qui peut entraîner des blessures corporelles.
- WARNING:** The treadmill must be submerged in at least 36" (91cm) of water before operating.
- Le tapis de course doit être immergé sous au moins 36» (91 cm) d'eau avant d'être mis en marche
- WARNING:** Consult a physician before using this product. Stop exercising if you feel pain or tightness in your chest, become short of breath, or feel faint. Contact your doctor before using this product again.
- AVERTISSEMENT:** Consultez un médecin avant d'utiliser ce produit. Arrêtez de faire de l'exercice si vous ressentez une douleur ou tension dans la poitrine, si vous avez de la difficulté à respirer ou si vous êtes sur le point de vous évanouir. Contactez votre médecin avant d'utiliser à nouveau ce produit.
- WARNING:** The appliance is not to be used by persons (including children) with reduced physical, sensory or mental capabilities, or lack of experience and knowledge, unless they are under adult supervision at all times and after they have been given instruction by a qualified adult.
- AVERTISSEMENT:** Cet appareil ne doit pas être utilisé par des personnes (y compris des enfants) ayant des capacités physiques, sensorielles ou mentales réduites, ou manquant d'expérience et de connaissances, à moins d'être à tout moment sous la supervision d'un adulte et après avoir été correctement supervisées ou informées par un adulte compétent.

## Other Important Safety Instructions

---

- WARNING:** To reduce the risk of injury, do not permit children to use this product unless they are closely supervised by an adult at all times.
- AVERTISSEMENT:** Pour réduire le risque de blessure, ne permettez pas aux enfants d'utiliser ce produit à moins qu'ils ne soient surveillés de près en tout temp
- WARNING:** To reduce the risk of injury:
- AVERTISSEMENT:** Pour réduire le risque de blessure:
- The water in a spa should never exceed 104 °F (40 °C). Water temperatures between 100 °F (38 °C) and 104 °F (40 °C) are considered safe for a healthy adult. Lower water temperatures are recommended for young children and when spa use exceeds 10 minutes.  
L'eau dans un spa ne doit jamais dépasser 40 °C (104 °F)/Les températures de l'eau comprises entre 38 °C (100 °F) et 40 °C (104 °F) sont considérées comme sûres pour un adulte en bonne santé. Des températures d'eau plus basses sont recommandées pour les jeunes enfants et lorsque l'utilisation du spa dépasse 10 minutes.
  - Since excessive water temperatures have a high potential for causing fetal damage during the early months of pregnancy, pregnant or possibly pregnant women should limit spa water temperatures to 100 °F (38 °C).  
Étant donné que les températures excessives de l'eau ont un potentiel élevé de causer des dommages au fœtus pendant les premiers mois de la grossesse, les femmes enceintes ou éventuellement enceintes devraient limiter la température de l'eau du spa à 38 °C (100 °F).
  - Before entering a spa, the user should measure the water temperature since the tolerance of water temperature regulating devices vary.  
Avant d'entrer dans un spa, l'utilisateur doit mesurer la température de l'eau car la tolérance des dispositifs de régulation de la température de l'eau varie.
  - The use of alcohol, drugs, or medication before or during spa use may lead to unconsciousness with the possibility of drowning.  
La consommation d'alcool, de drogues ou de médicaments avant ou pendant l'utilisation du spa peut entraîner une perte de conscience avec possibilité de noyade.
  - Obese persons and persons with a history of heart disease, low or high blood pressure, circulatory system problems, or diabetes should consult a physician before using a spa.  
Les personnes obèses et les personnes ayant des antécédents de maladie cardiaque, d'hypotension ou d'hypertension artérielle, des problèmes de système circulatoire ou de diabète devraient consulter un médecin avant d'utiliser un spa.
  - Persons using medication should consult a physician before using a spa since some medication may induce drowsiness while other medication may affect heart rate, blood pressure, and circulation.  
Les personnes qui prennent des médicaments devraient consulter un médecin avant d'utiliser un spa, car certains médicaments peuvent provoquer de la somnolence tandis que d'autres médicaments peuvent affecter la fréquence cardiaque, la pression artérielle et la circulation.
- DANGER:** RISK OF INJURY: The suction fittings in this spa are sized to match the specific water flow created by the pump. Should the need arise to replace the suction fittings or the pump, be sure that the flow rates are compatible. Never operate spa if the suction fittings are broken or missing. Never replace a suction fitting with one rated less than the flow rate marked on the original suction fitting.
- DANGER:** RISQUE DE BLESSURE: Les raccords d'aspiration de ce spa sont dimensionnés pour correspondre au débit d'eau spécifique créé par la pompe. En cas de besoin de remplacement des raccords d'aspiration ou de la pompe, assurez-vous que les débits sont compatibles. N'utilisez jamais le spa si les raccords d'aspiration sont cassés ou manquants. Ne remplacez jamais un raccord d'aspiration par un autre de moins que le débit indiqué sur le raccord d'aspiration d'origine.

- DANGER:** RISK OF ACCIDENTAL DROWNING: Extreme caution must be exercised to prevent unauthorized access by children. To avoid accidents, ensure that children cannot use this spa unless they are supervised by an adult at all times.
- DANGER:** RISQUE DE NOYADE ACCIDENTELLE: Une extrême prudence doit être exercée pour empêcher tout accès non autorisé aux enfants. Pour éviter les accidents, assurez-vous que les enfants ne peuvent pas utiliser ce spa à moins qu'ils ne soient surveillés en tout temps.
- DANGER:** RISK OF ELECTRIC SHOCK: Install at least 5 feet (1,5 m) from all metal surfaces. As an alternative, a spa may be installed within 5 feet (1,5 m) of metal surfaces if each metal surface is permanently connected by a minimum 8 AWG (8.4 mm<sup>2</sup>) solid copper conductor to the wire connector on the terminal box that is provided for this purpose.
- A wire connector is provided on this unit to connect a minimum 8 AWG (8.4 mm<sup>2</sup>) solid copper conductor between this unit and any metal equipment, metal enclosures of electrical equipment, metal water pipe, or conduit within 5 feet (1,5 m) of the unit.
- DANGER:** RISQUE DE CHOC ÉLECTRIQUE: Installez à au moins 1,5 m (5 pieds) de toutes les surfaces métalliques. Comme alternative, un spa peut être installé à moins de 1,5 m (5 pieds) des surfaces métalliques si chaque surface métallique est connectée en permanence par un conducteur en cuivre massif d'au moins 8,4 mm<sup>2</sup> (8 AWG) au connecteur de fil sur la boîte à bornes qui est fourni à cet effet.
- Un connecteur de fil est fourni sur cette unité pour connecter un conducteur en cuivre solide d'au moins 8,4 mm<sup>2</sup> (8 AWG) entre cette unité et tout équipement métallique, les boîtiers métalliques de l'équipement électrique, la conduite d'eau métallique ou le conduit à moins de 1,5 m (5 pieds) de l'unité.
- DANGER:** RISK OF ELECTRIC SHOCK: Do not permit any electric appliance, such as a light, telephone, radio, or television, within 5 feet (1,5 m) of a spa.
- DANGER:** RISQUE DE CHOC ÉLECTRIQUE: Ne laissez aucun appareil électrique, comme une lampe, un téléphone, une radio ou une télévision, à moins de 1,5 m (5 pieds) d'un spa.
- WARNING:** CHILDREN SHOULD NOT USE SPAS OR HOT TUBS WITHOUT ADULT SUPERVISION.
- AVERTISSEMENT:** NE PAS LAISSER LES ENFANTS UTILISER UNE CUVE DE RELAXATION SANS SURVEILLANCE.
- WARNING:** DO NOT USE SPAS OR HOT TUBS UNLESS ALL SUCTION GUARDS ARE INSTALLED TO PREVENT BODY AND HAIR ENTRAPMENT.
- AVERTISSEMENT:** POUR ÉVITER QUE LES CHEVEUX OU UNE PARTIE DU CORPS PUISSENT ÊTRE ASPIRÉS, NE PAS UTILISER UNE CUVE DE RELAXATION SI LES GRILLES DE PRISE D'ASPIRATION NE SONT PAS TOUTES EN PLACE.
- WARNING:** PEOPLE USING MEDICATIONS AND/OR HAVING AN ADVERSE MEDICAL HISTORY SHOULD CONSULT A PHYSICIAN BEFORE USING A SPA OR HOT TUB.
- AVERTISSEMENT:** LES PERSONNES QUI PRENNENT DES MÉDICAMENTS ET (OU) ONT DES PROBLÈMES DE SANTÉ DEVRAIENT CONSULTER UN MÉDECIN AVANT D'UTILISER UNE CUVE DE RELAXATION.
- WARNING:** PEOPLE WITH INFECTIOUS DISEASES SHOULD NOT USE A SPA OR HOT TUB.
- AVERTISSEMENT:** LES PERSONNES ATTEINTES DE MALADIES INFECTIEUSES NE DEVRAIENT PAS UTILISER UNE CUVE DE RELAXATION.
- WARNING:** TO AVOID INJURY, EXERCISE CARE WHEN ENTERING OR EXITING THE SPA OR HOT TUB.
- AVERTISSEMENT:** POUR ÉVITER DES BLESSURES, USER DE PRUDENCE EN ENTRANT DANS UNE CUVE DE RELAXATION ET EN SORTANT.

- WARNING:** DO NOT USE DRUGS OR ALCOHOL BEFORE OR DURING THE USE OF A SPA OR HOT TUB TO AVOID UNCONSCIOUSNESS AND POSSIBLE DROWNING.
- AVERTISSEMENT:** POUR ÉVITER L'ÉVANOUISSEMENT ET LA NOYADE ÉVENTUELLE, NE PRENDRE NI DROGUE NI ALCOOL AVANT D'UTILISER UNE CUVE DE RELAXATION NI QUAND ON S'Y TROUVE.
- WARNING:** THE USE OF ALCOHOL OR DRUGS CAN GREATLY INCREASE THE RISK OF FATAL HYPERTHERMIA IN HOT TUBS AND SPAS.
- AVERTISSEMENT:** LA CONSOMMATION D'ALCOOL OU DE DROGUE AUGMENTE CONSIDÉRABLEMENT LES RISQUES D'HYPERTHERMIE MORTELLE DANS UNE CUVE DE RELAXATION.
- WARNING:** PREGNANT OR POSSIBLY PREGNANT WOMEN SHOULD CONSULT A PHYSICIAN BEFORE USING A SPA OR HOT TUB.
- AVERTISSEMENT:** LES FEMMES ENCEINTES, QUE LEUR GROSSESSE SOIT CONFIRMÉE OU NON, DEVRAIENT CONSULTER UN MÉDECIN AVANT D'UTILISER UNE CUVE DE RELAXATION
- WARNING:** WATER TEMPERATURE IN EXCESS OF 100 °F (38 °C) CAN BE INJURIOUS TO YOUR HEALTH.
- AVERTISSEMENT:** IL PEUT ÊTRE DANGEREUX POUR LA SANTÉ DE SE PLONGER DANS DE L'EAU À PLUS DE 38 °C (100 °F).
- WARNING:** BEFORE ENTERING THE SPA OR HOT TUB, MEASURE THE WATER TEMPERATURE WITH AN ACCURATE THERMOMETER.
- AVERTISSEMENT:** AVANT D'UTILISER UNE CUVE DE RELAXATION, MESURER LA TEMPÉRATURE DE L'EAU À L'AIDE D'UN THERMOMÈTRE PRÉCIS.
- WARNING:** DO NOT USE A SPA OR HOT TUB IMMEDIATELY FOLLOWING STRENUOUS EXERCISE.
- AVERTISSEMENT:** NE PAS UTILISER UNE CUVE DE RELAXATION IMMÉDIATEMENT APRÈS UN EXERCICE FATIGANT
- WARNING:** PROLONGED IMMERSION IN A SPA OR HOT TUB CAN BE INJURIOUS TO YOUR HEALTH.
- AVERTISSEMENT:** L'UTILISATION PROLONGÉE D'UNE CUVE DE RELAXATION PEUT ÊTRE DANGEREUSE POUR LA SANTÉ.
- WARNING:** DO NOT PERMIT ELECTRIC APPLIANCES (SUCH AS A LIGHT, TELEPHONE, RADIO, OR TELEVISION) WITHIN 5 FEET (1,5 M) OF THIS SPA OR HOT TUB.
- AVERTISSEMENT:** NE PAS PLACER D'APPAREIL ÉLECTRIQUE (LUMINAIRE, TÉLÉPHONE, RADIO, TÉLÉVISEUR, ETC) À MOINS DE 1,5 M (5 PIEDS) DE CETTE CUVE DE RELAXATION.
- CAUTION:** MAINTAIN WATER CHEMISTRY IN ACCORDANCE WITH MANUFACTURER'S INSTRUCTIONS.
- ATTENTION:** LA TENEUR DE L'EAU EN MATIÈRES DISSOUTES DOIT ÊTRE CONFORME AUX DIRECTIVES DU FABRICANT
- WARNING:** Hyperthermia occurs when the internal temperature of the body reaches a level several degrees above the normal body temperature of 98.6 °F (37 °C). The symptoms of hyperthermia include drowsiness, lethargy, and an increase in the internal temperature of the body. The effects of hyperthermia include:
- Unawareness of impending hazard
  - Failure to perceive heat
  - Failure to recognize the need to exit spa.
  - Physical inability to exit spa.
  - Fetal damage in pregnant women.
  - Unconsciousness and danger of drowning.

- AVERTISSEMENT:** L'hyperthermie se produit lorsque la température interne du corps atteint un niveau supérieur de plusieurs degrés à la température corporelle normale de 37 °C (98.6 °F). Les symptômes de l'hyperthermie comprennent la somnolence, la léthargie et une augmentation de la température interne du corps. Les effets de l'hyperthermie comprennent:
- Méconnaissance d'un danger imminent.
  - Incapacité à percevoir la chaleur.
  - Incapacité à reconnaître la nécessité de quitter le spa.
  - Incapacité physique de quitter le spa.
  - Dommages foetaux chez les femmes enceintes.
  - Inconscience et danger de noyade.

## ⚠️ WARNING

- **INGESTION HAZARD:** This product contains a button cell or coin battery.
- **DEATH** or serious injury can occur if ingested.
- A swallowed button cell or coin battery can cause **Internal Chemical Burns** in as little as 2 hours.
- **KEEP** new and used batteries **OUT OF REACH** of **CHILDREN**.
- **Seek immediate medical attention** if a battery is suspected to be swallowed or inserted inside any part of the body.



Battery Type: CR2032  
Nominal Voltage: 3V

- Remove and immediately recycle or dispose of used batteries according to local regulations and keep away from children. Do NOT dispose of batteries in household trash or incinerate.
- Even used batteries may cause severe injury or death.
- Call a local poison control center for treatment information.
- Non-rechargeable batteries are not to be recharged.
- Do not force discharge, recharge, disassemble, heat above (manufacturer's specified temperature rating) or incinerate. Doing so may result in injury due to venting, leakage or explosion resulting in chemical burns.
- Ensure the batteries are installed correctly according to polarity (+ and -).
- Do not mix old and new batteries, different brands or types of batteries, such as alkaline, carbon-zinc, or rechargeable batteries.
- Remove and immediately recycle or dispose of batteries from equipment not used for an extended period of time according to local regulations.
- Always completely secure the battery compartment. If the battery compartment does not close securely, stop using the product, remove the batteries, and keep them away from children.

**SAVE THESE INSTRUCTIONS  
CONSERVEZ CES INSTRUCTIONS**

# Fastlane® Tread Information

---

The entire Endless™ Pools system is ETL listed, Ref. #2001779 and conforms to UL Standard #1563. Individually, all electrical components of the Endless Pool are UL and/or CSA approved.

All electrical connections should be made by a licensed electrician in accordance with the current national and local electrical codes.

**Please read this Owner's Manual and all associated Supplemental Guides prior to beginning your project.**

## Table of Contents

---

Warnings and Safety Information. . . . .	1	Hydraulic Power Unit Installation. . . . .	21
General Overview of the Fastlane Tread. . . . .	8	Electrical Requirements - 60Hz . . . . .	23
Choosing a Location For Your Fastlane Tread. . . . .	9	Electrical Requirements - 50Hz . . . . .	24
Receiving Your Fastlane Tread . . . . .	10	Bonding Your Fastlane Tread . . . . .	25
Mounting Kit Installation. . . . .	10	Using Your Fastlane Tread. . . . .	28
Fastlane Tread Assembly . . . . .	10	Product Installation Information. . . . .	29
Fastlane Tread and Grab Bar Installation . . . . .	15	Fastlane Tread Maintenance. . . . .	30

# I. General Overview of Fastlane® Tread

The Fastlane® Tread is an underwater hydraulically driven treadmill that adds a smooth and adjustable workout to any conventional pool under new construction. Research shows that, compared to land-based treadmills, underwater treadmills allow the end user to burn more calories, enjoy an increased range of motion, and suffer less joint impact.

The Fastlane Tread attaches directly to your pool wall with the use of a mounting kit. Two hydraulic hoses carrying a non-food grade, biodegradable hydraulic fluid run between the treadmill and remotely located Hydraulic Power Unit, thus eliminating the need for electricity poolside. The hydraulic hoses that carry the fluid from the power unit to the treadmill are hidden in the pool wall and under the pool deck.

The Fastlane Tread features a spacious 18-3/4" (48cm) wide belt for walking or running. With its 5-HP motor, the treadmill reaches a top speed of 5.5 mph (8.8 kph). The Fastlane Tread is controlled using a wireless transmitter that turns the unit on and off and adjusts the speed. The Endless Pools Fastlane® Swim (Current Unit) can also be installed and used in conjunction with the Fastlane Tread to add intensity to the workout.

If installing in a traditional gunite pool, the Fastlane Tread can sit above the pool floor as shown in Figure 1a or can be recessed so that the unit sits flush with the pool floor as shown in Figure 1b.

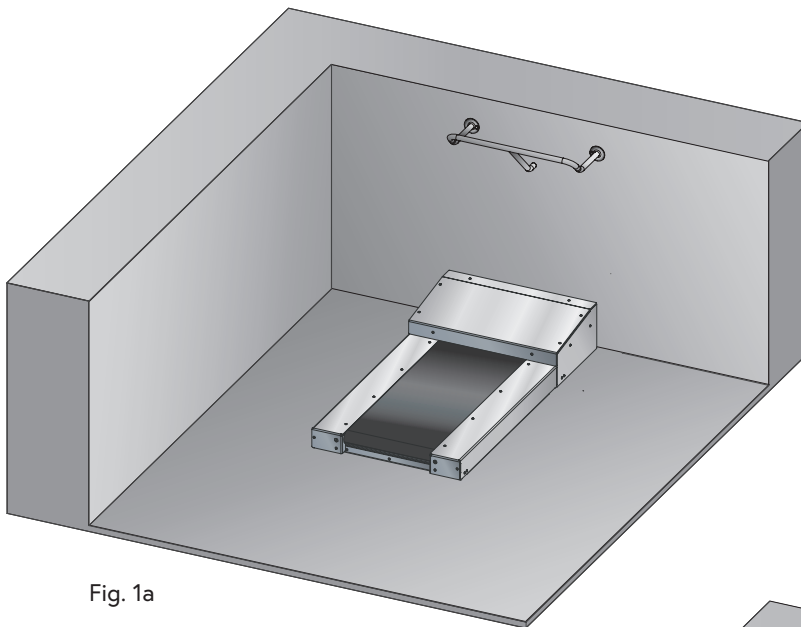


Fig. 1a

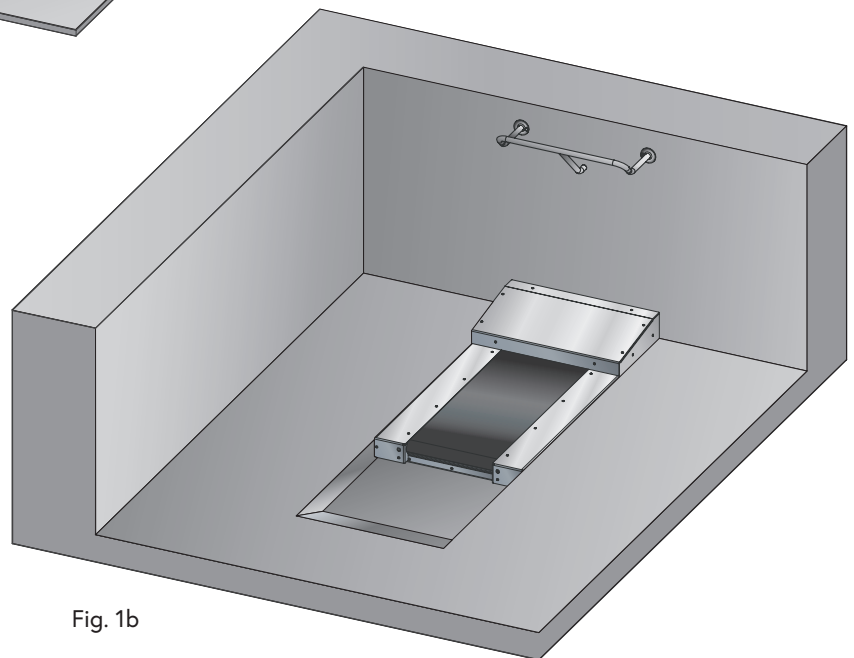


Fig. 1b

## 2. Choosing a Location for Your Fastlane® Tread

The Fastlane® Tread can fit into virtually any swimming pool. For optimal use, it's recommended that the Fastlane Tread is installed no closer than 18" (46cm) to any adjacent wall. In addition, 18" (46cm) of clearance is recommended at the rear of the Fastlane Tread. These recommendations allow ample space for stepping on to and off of the unit. The water depth where the Fastlane Tread is installed should be based upon the height and preference of the end user. It's recommended that the waterline on the user is higher than the waist, but lower than the shoulders. The treadmill belt sits approximately 4-5/8" (12cm) above the pool floor. This MUST be considered when determining the appropriate water depth.

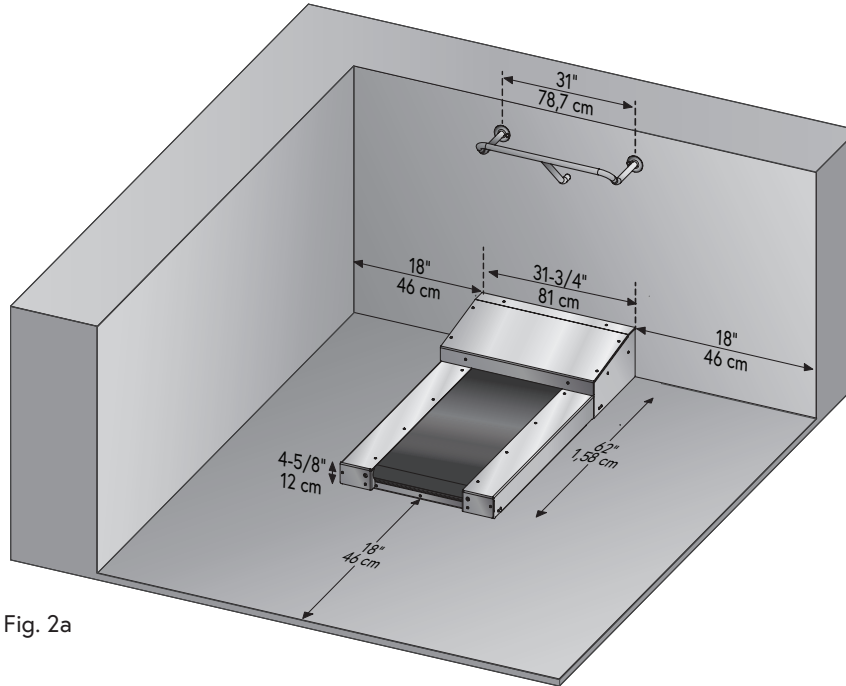


Fig. 2a

If installing the optional Fastlane® Swim in conjunction with the Fastlane Tread, 18" (46cm) of clearance is required on each side of the Current Unit to any adjacent wall. In addition, the water depth where the Current Unit is installed MUST be a minimum of 46" (1,16m) deep. For optimal performance, 12' (3,65m) is recommended between the wall that the Current Unit is installed on and the opposing wall in line with the unit.

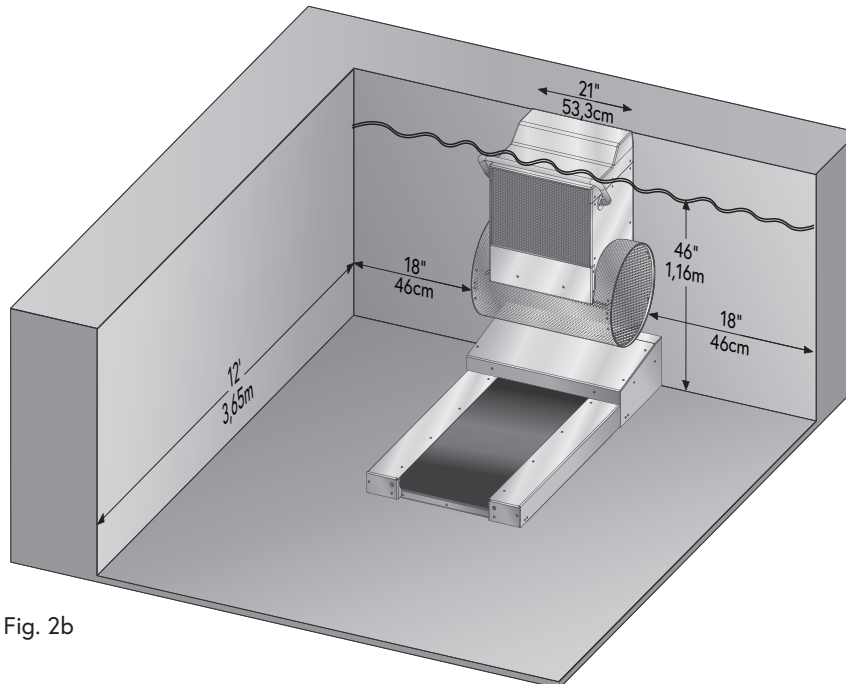


Fig. 2b

### 3. Receiving Your Fastlane® Tread

The Fastlane® Tread arrives in a wooden crate. Upon arrival, the crate should be inspected for external damage. Should there be visible damage, you must complete a damage-claim report provided by the truck driver. Please call the shipping department immediately at 800-732-8660. The Fastlane Tread shipment is comprised of the following parts:

QTY	DESCRIPTION		
1	Treadmill	1	Side Deck Kit
1	Mounting Kit	1	Hydraulic Submerged Hose Kit
1	Grab Bar Kit	1	Treadmill Steel Braid Run Hose Kit
1	Grab Bar Mounting Kit	1	Hydraulic Power Unit
1	Fastlane Tread Installation Kit	1	Hydraulic Fluid, 5 Gallon Container

### 4. Mounting Kit Installation

This Owner's Manual includes the appropriate supplemental guide for the mounting kit specific to your pool type. Please refer to the Mounting Kit Supplemental Guide, or scan the corresponding QR code below:



### 5. Fastlane® Tread Assembly

The hardware required for the assembly is located in the Fastlane Tread Installation Kit. When assembling the unit, a low torque setting should be used on your drill to prevent the holes in the acrylic from stripping.

1. With a minimum of two people, carefully lift and rotate the Fastlane Tread upright, onto its front end (A) (Fig. 3).

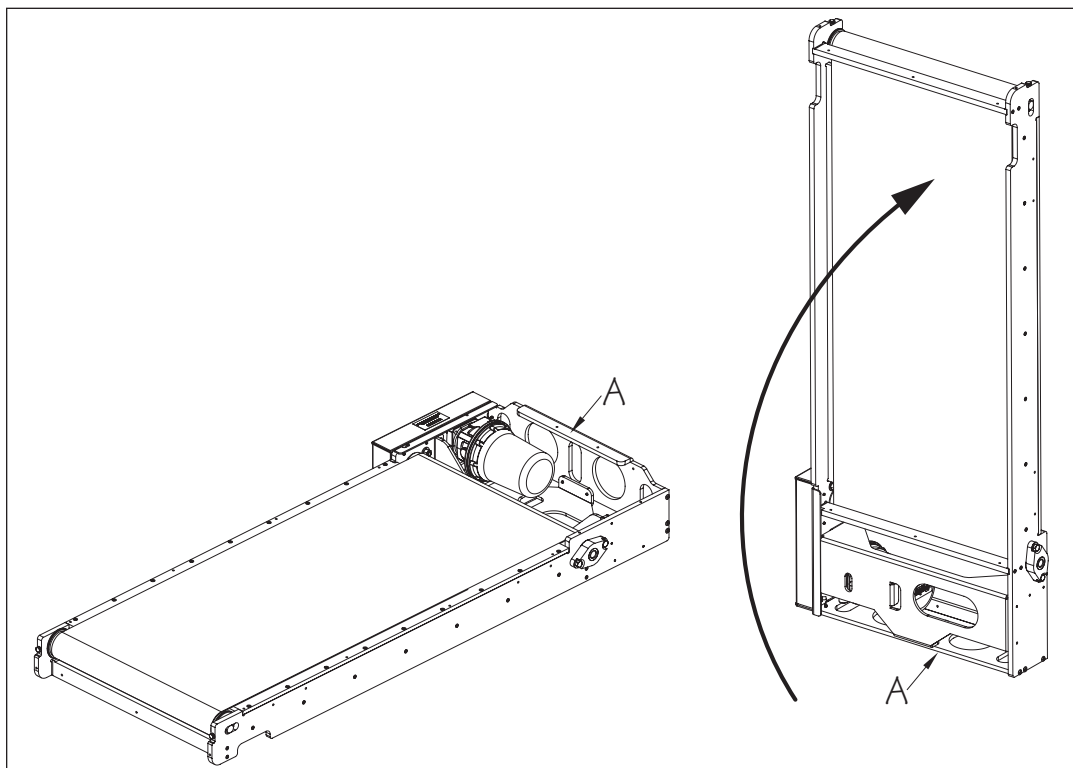


Fig. 3

2. Attach the Bottom Plates (A) to the underside using the 1" (25mm) Phillips Truss Head Screws (B) (Fig. 4). After this step has been completed, carefully lower the unit to the ground.

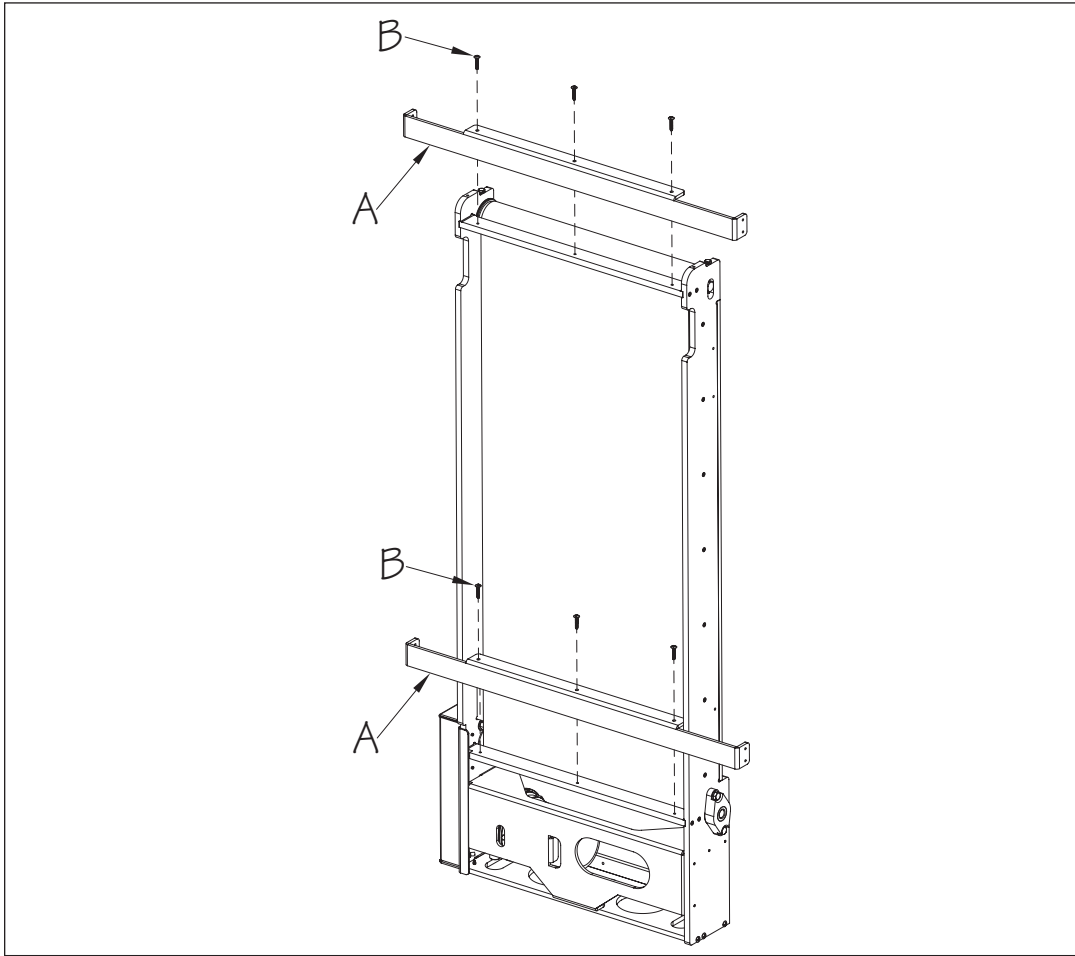


Fig. 4

3. Attach the End Standoff (A) to the front using the 1" (25mm) Phillips Truss Head Screws (B) (Fig. 5).

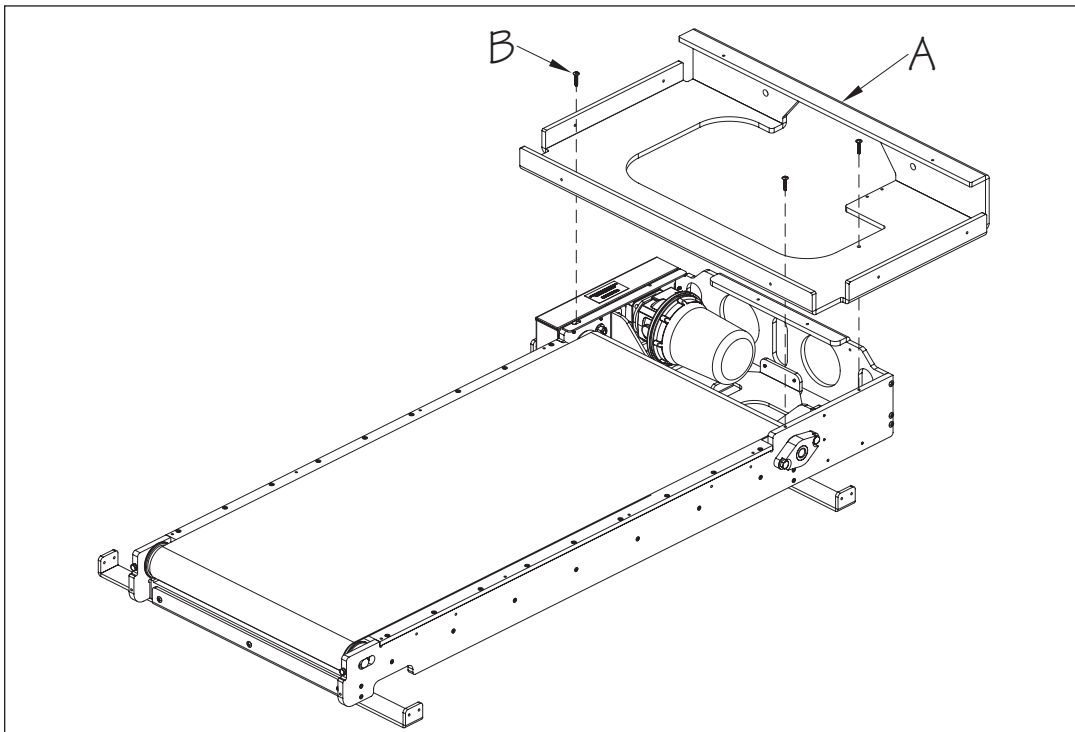


Fig. 5

4. Attach the Side Decks (A) and (B) using the 1" (25mm) Phillips Truss Head Screws (C) (Fig. 6).

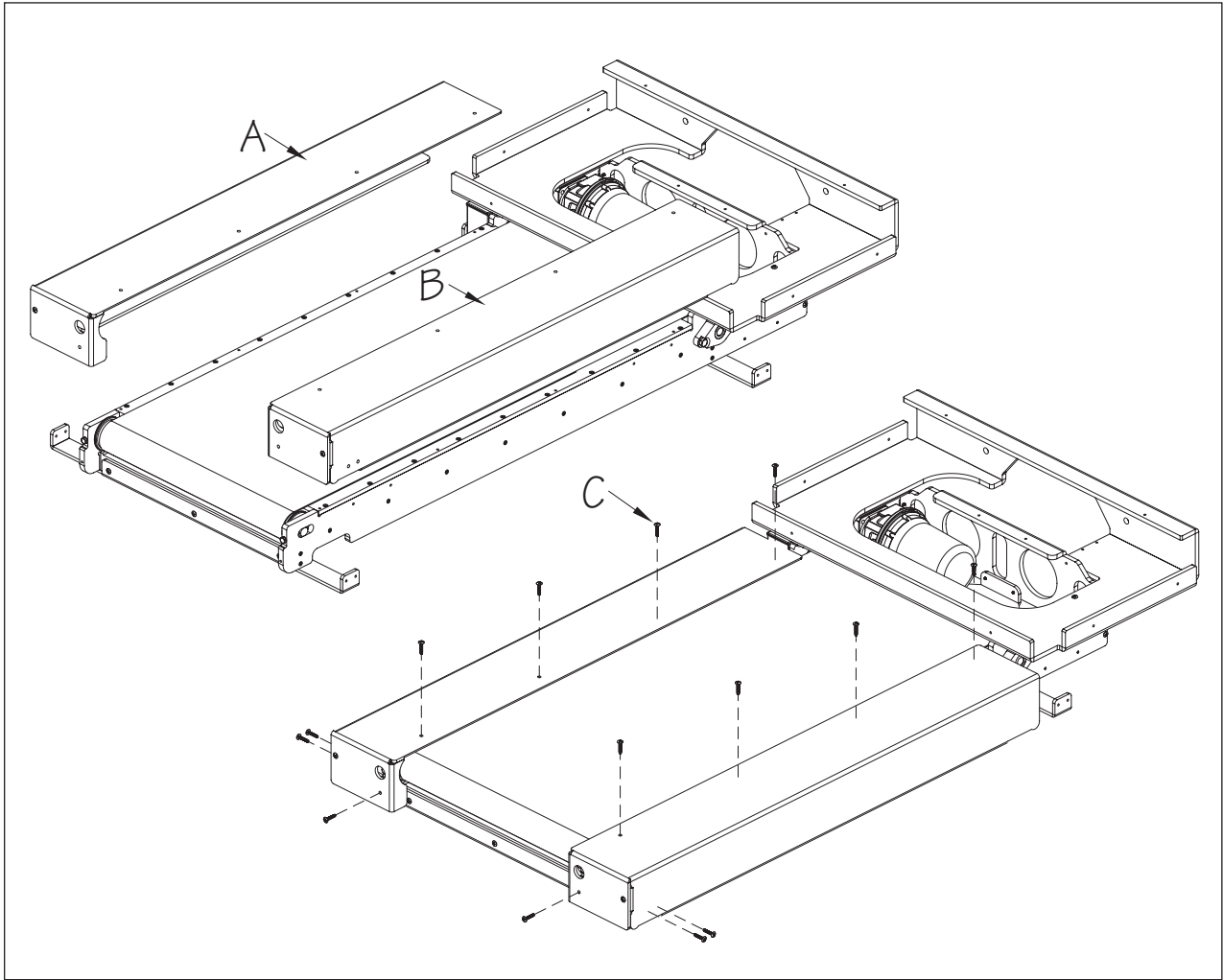


Fig. 6

5. Prior to attaching the two End Covers, the covers MUST be modified to account for the radius at the bottom of the pool wall, where the wall meets the floor, (if a radius is present). Attach the End Covers (A) and (B) using the 1" Phillips Truss Head Screws (C) and 1" Phillips Flat Head Screws (D). DO NOT install a screw in location (E) at this time. This screw will be installed in the following step (Fig. 7).

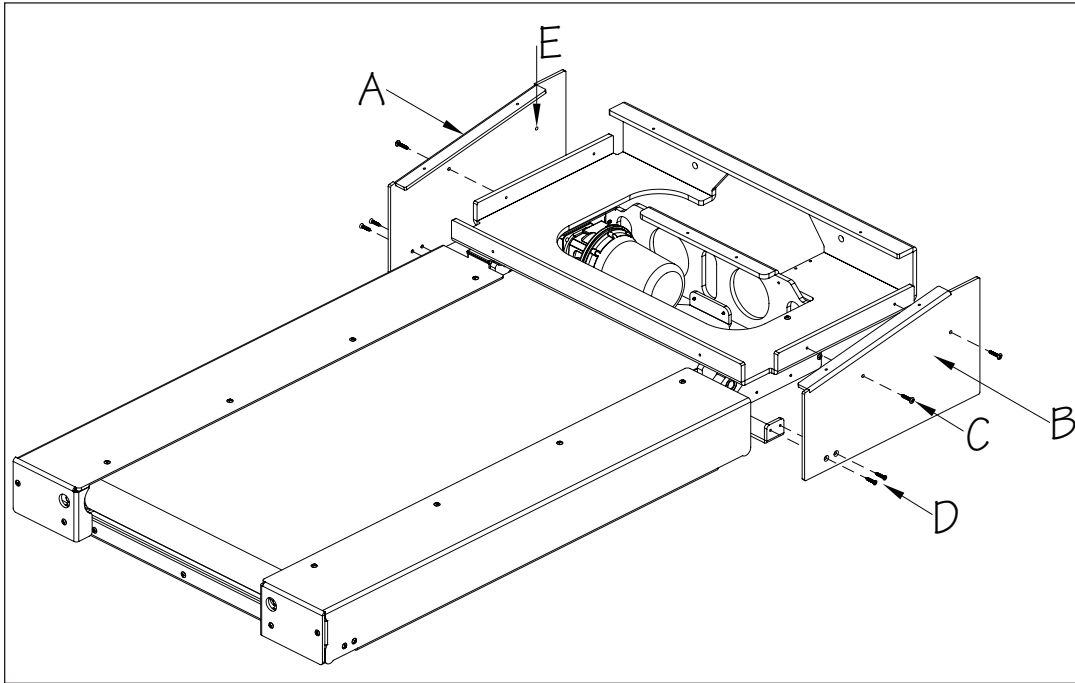


Fig. 7

6. Included in the installation kit is a #8 Solid Insulated Copper Bonding Wire which MUST be attached at this time. In addition, if the Fastlane® Tread is being installed in a pool using a salt-chlorine generator, the Sacrificial Zinc Anode MUST be installed to combat the corrosive nature of the salt. **THE ANODE SHOULD ONLY BE USED IN SALT POOLS.**

Attach the lanyard of the Zinc Anode (A) (salt pools ONLY) to the 1" (25mm) Machine Screw (B) and then insert the screw through the hole in the End Cover. Attach Bonding Wire (C), pre-attached to the Fastlane Tread, and the loose Bonding Wire (D) from the installation kit, to the screw. Secure wires with Nut (E) (Fig. 8).

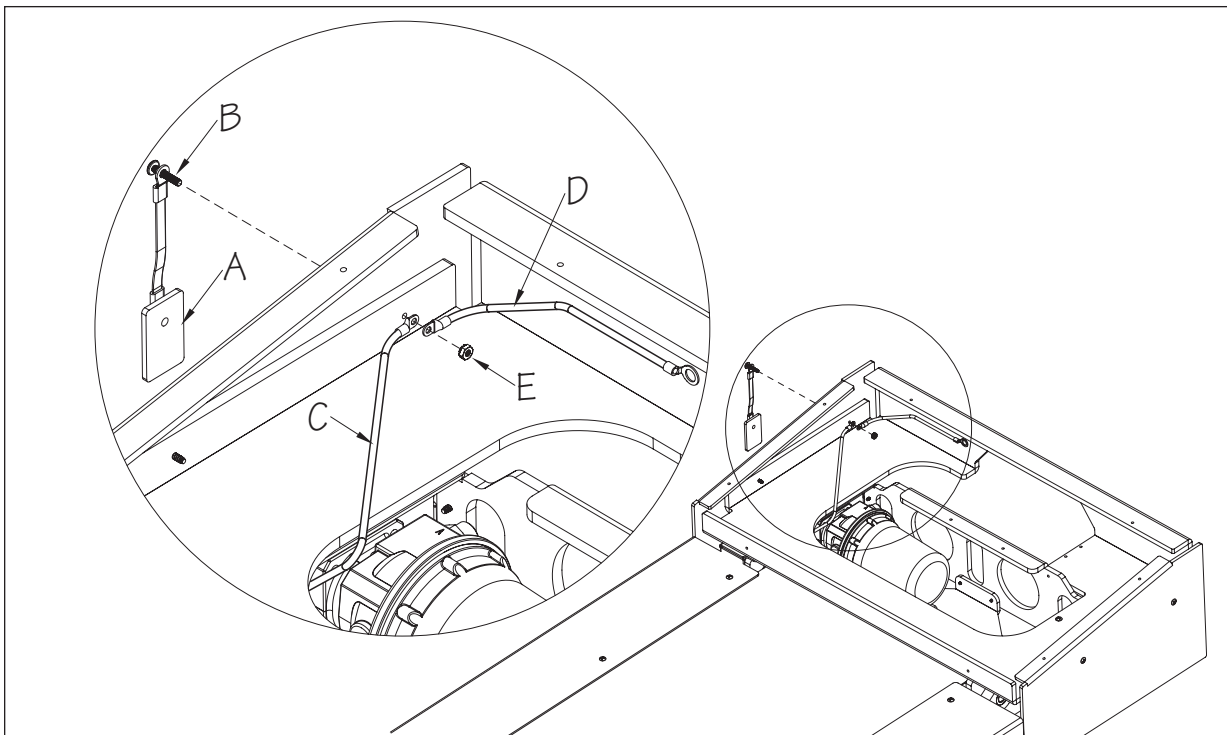


Fig. 8

7. The next step is attaching the Submersible Hydraulic Hoses (A) and (B) to the Hydraulic Motor (C). Remove the cap from each motor fitting (D) and verify the o-ring is properly seated. Attach the hose with red electrical tape wrapped around it to the fitting marked "A." This represents the Low-Pressure side of the motor. Attach the second hose to the other fitting on the motor (High-Pressure). Coil the hoses within the cavity of the End Standoff as shown (Fig. 9).

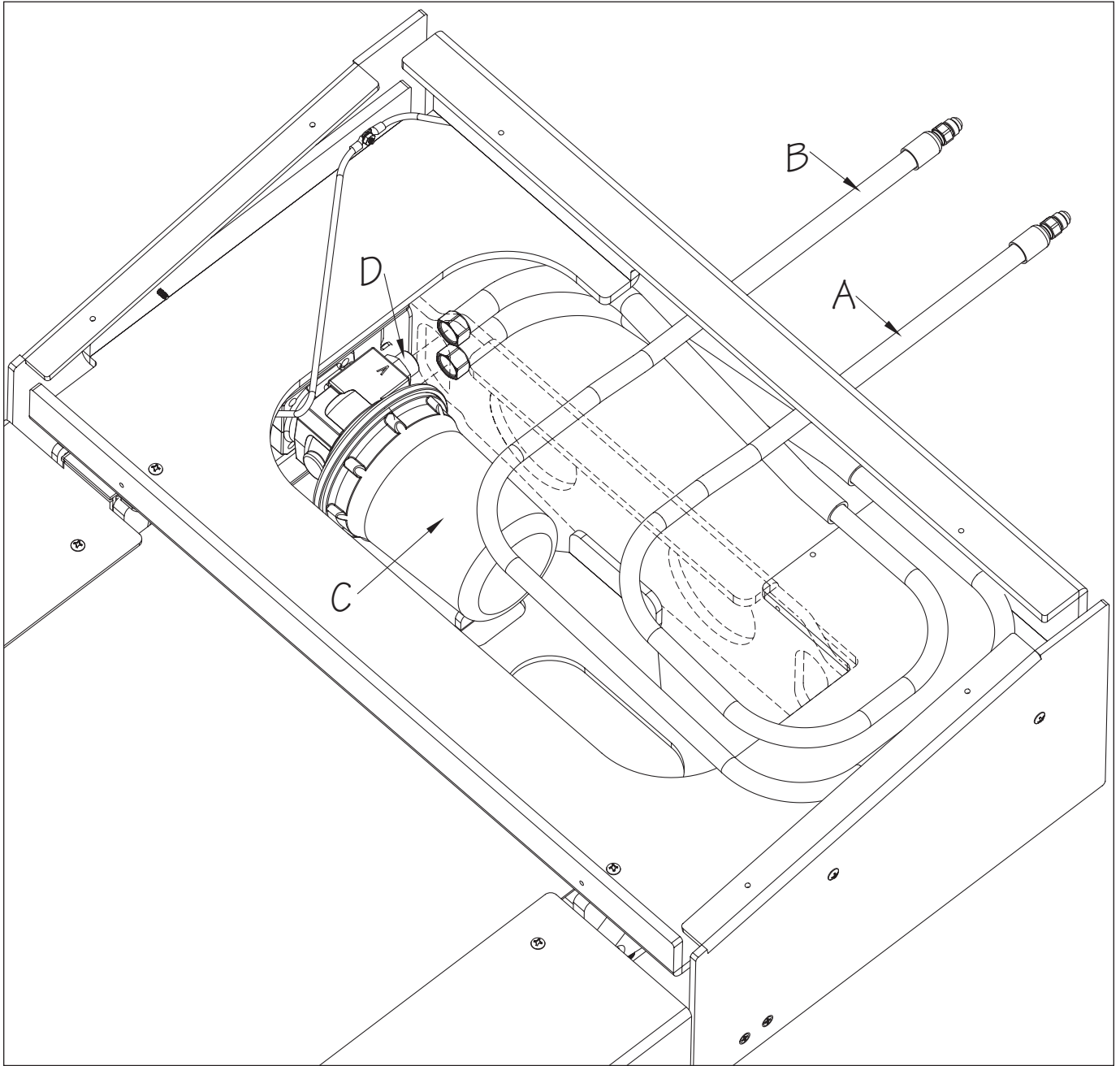


Fig. 9

## 6. Fastlane® Tread and Grab Bar Installation

By this point in the installation, the mounting kit should be installed, 1-1/2" (38mm) conduit should be routed, and Fastlane® Tread should be assembled and ready to be mounted on the pool wall.

### HYDRAULIC RUN HOSES

Each Hydraulic Run Hose has a white label (A) that reads "Pool" on the end that attaches to the Fastlane Tread in the pool (Fig. 10).

**IT IS CRITICAL TO VERIFY THAT THE HOSE END WITH THE POOL LABEL IS POOLSIDE AND THE OPPOSITE END IS THE END THAT IS FED THROUGH THE CONDUIT TO BE ATTACHED TO THE HYDRAULIC POWER UNIT OUTSIDE THE POOL.**

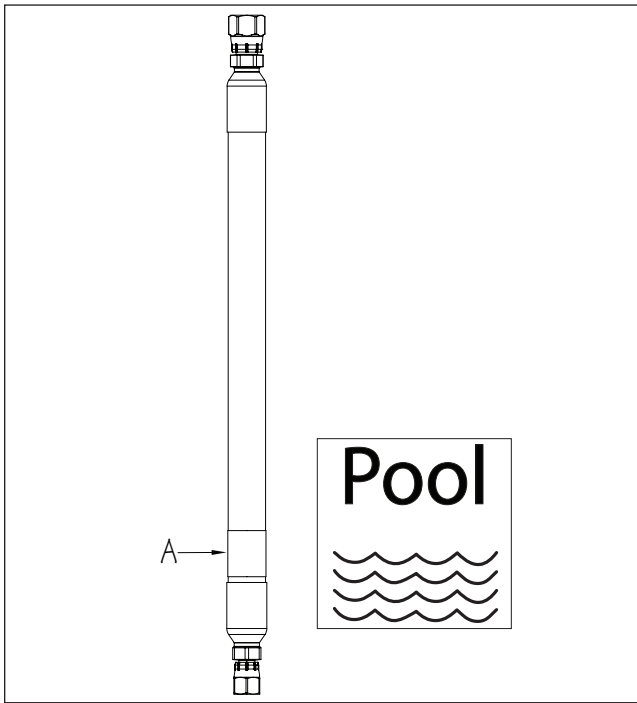


Fig. 10

Route the Run Hoses (A) into the fittings from the inside of the pool and through the conduit (B) to the Hydraulic Power Unit outside the pool. The hoses should extend no more than 6" (15cm) into the pool. **AGAIN, VERIFY THE POOL LABEL ON THE END OF EACH HOSE IS POOLSIDE** (Fig. 11).

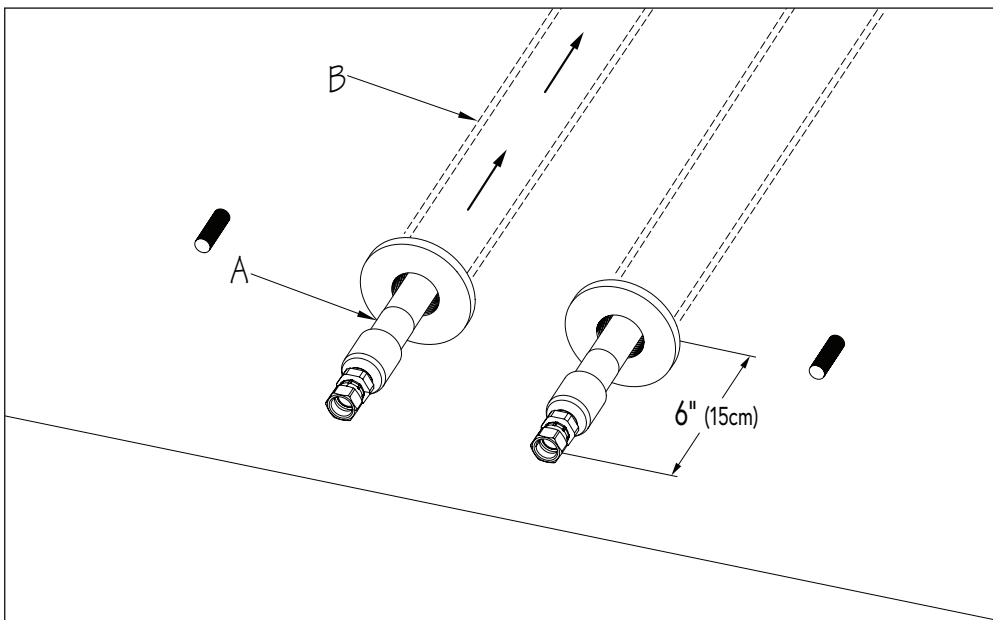


Fig. 11

## MOUNTING FASTLANE® TREAD TO POOL WALL

1. With a minimum of two people, lower the treadmill into the pool. Align the mounting holes (A) with the Threaded Rods/Studs (B) and position against the pool wall. If being installed in a vinyl liner pool, make sure the Rubber Washers (C), included in the mounting kit, are installed (Fig. 12).

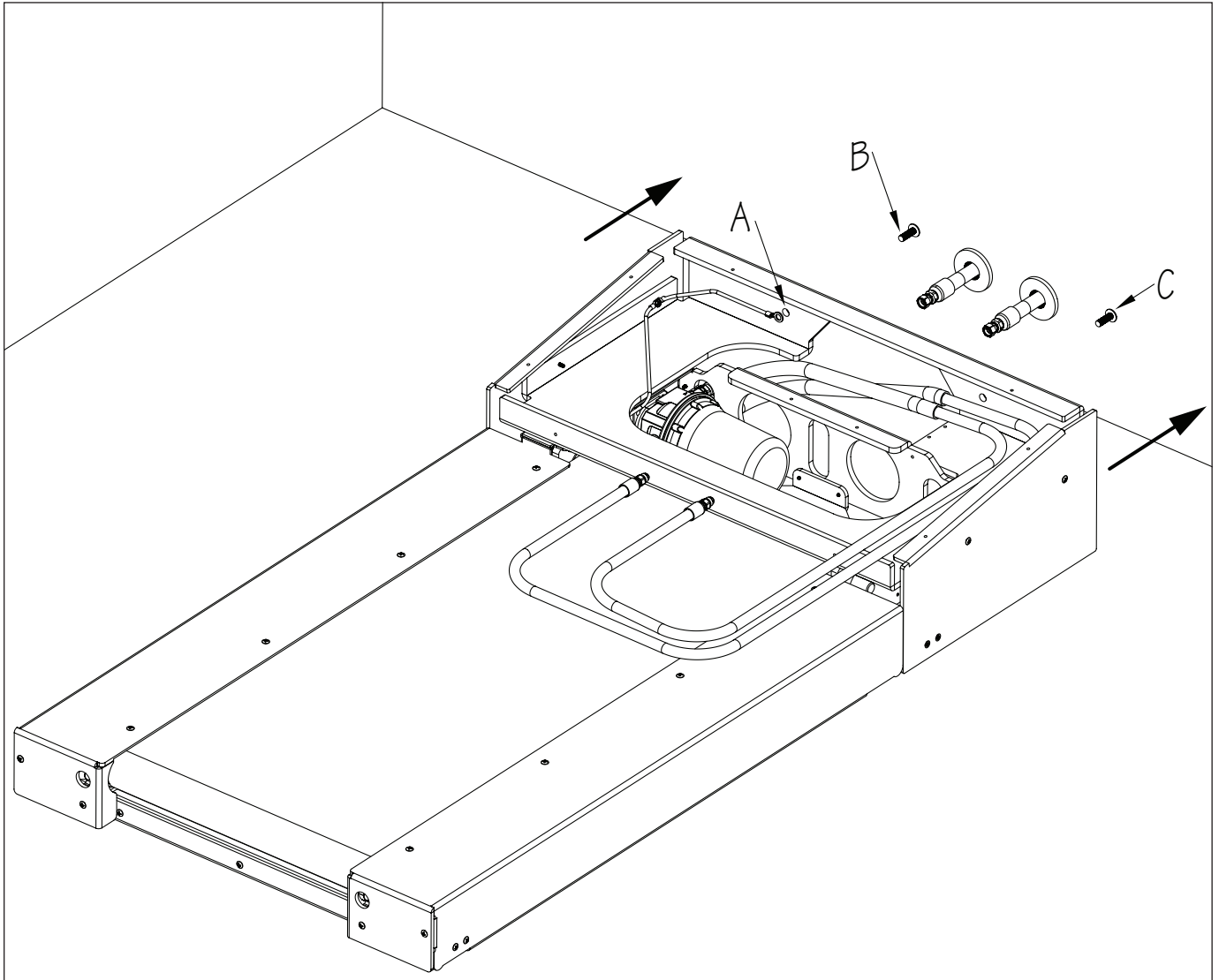


Fig. 12

FOR GUNITE POOL INSTALLATIONS, FOLLOW STEP 2A. IF BEING INSTALLED IN A POOL WITH A VINYL LINER, FOLLOW STEP 2B.

- 2a. Install a Flat Washer (A) onto each Threaded Rod. On the left rod, install the Bonding Wire (B). **IT IS CRITICAL THAT THE BONDING WIRE IS INSTALLED.** Secure Fastlane® Tread using Lock Washers (C) and Jam Nuts (D) (Fig. 13).

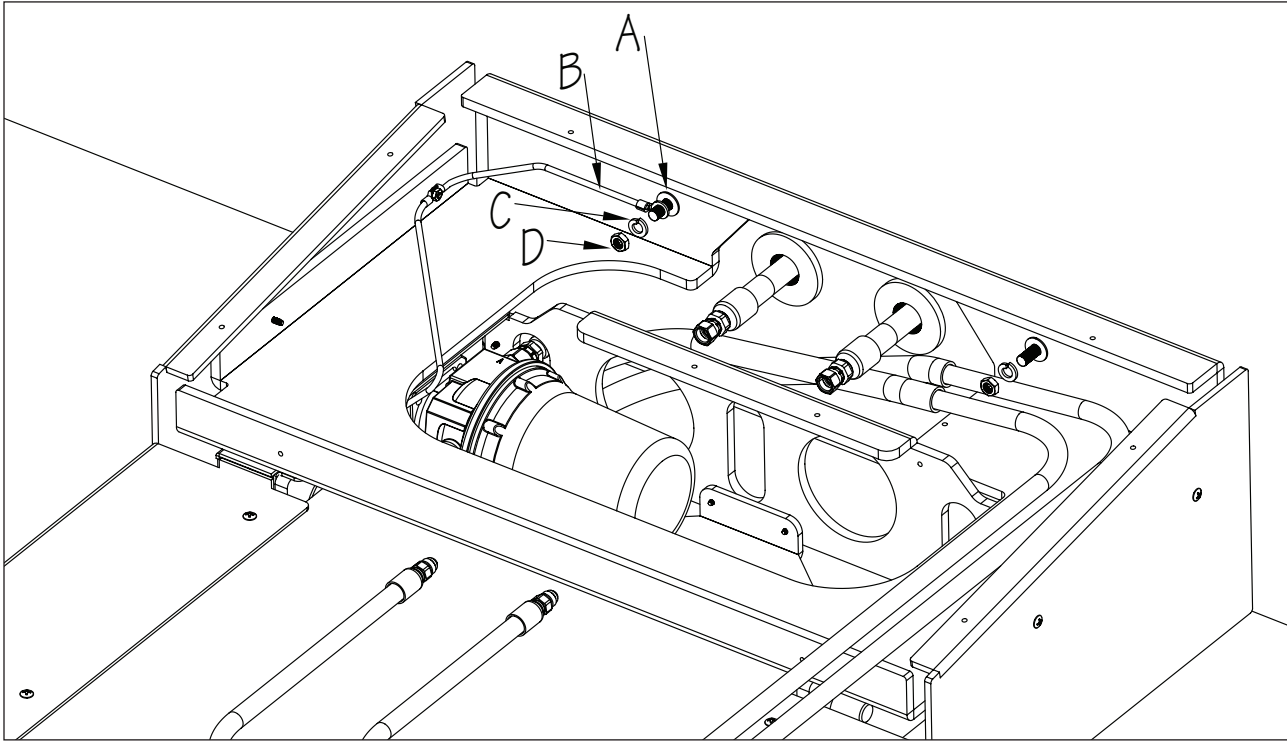


Fig. 13

- 2b. Install a Sealing Washer (A) onto each Threaded Stud. The stainless steel side of washer **MUST** face out. Install a Flat Washer (B) onto each stud. On the left stud, install the Bonding Wire (C). **IT IS CRITICAL THAT THE BONDING WIRE IS INSTALLED.** Secure Fastlane Tread using Lock Washers (D) and Jam Nuts (E). Tighten nuts until the unit is fully seated against the pool wall. Tighten another half turn. **DO NOT OVERTIGHTEN** (Fig. 14).

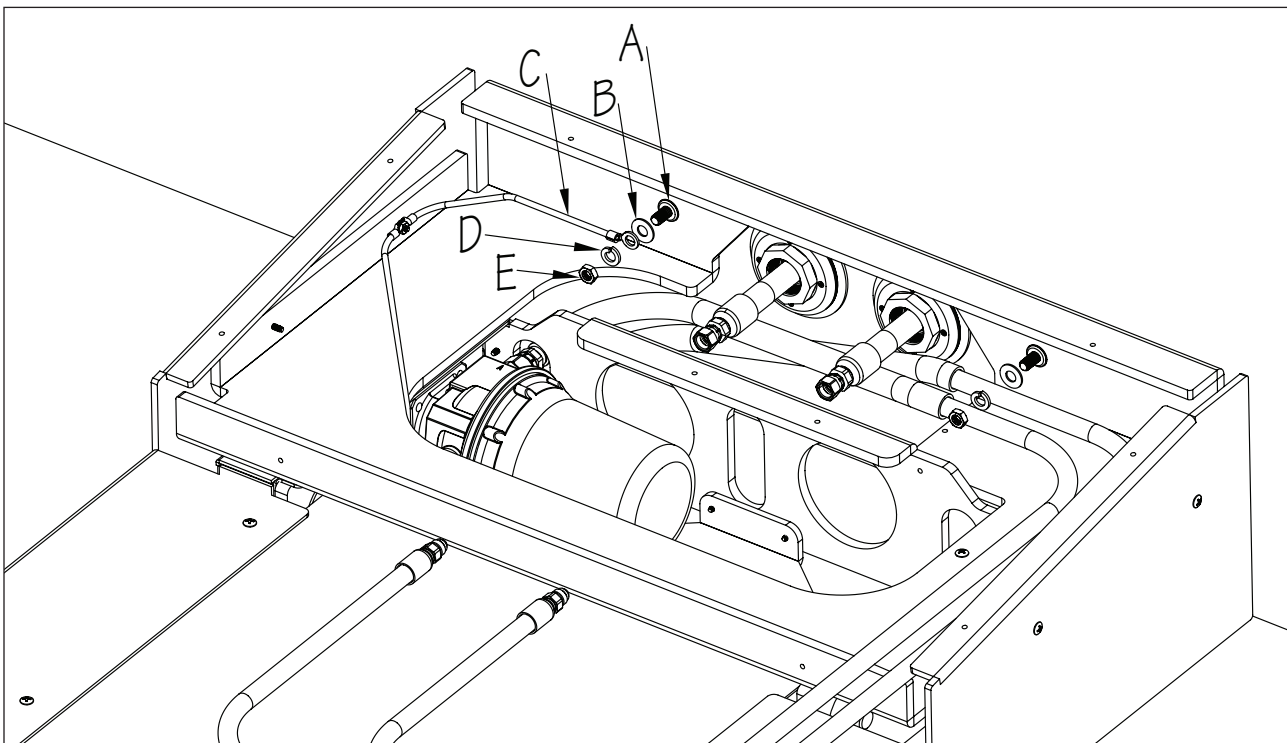


Fig. 14

3. Apply Teflon tape to the threads of the Liquid Tight Fittings (A) and then install the fittings onto the Sub Hoses (B).

There is red tape wrapped around one of the Sub Hoses (B) and one of the Run Hoses (C) representing low-pressure. Attach the Sub Hose with the red tape to the Run Hose with the red tape. Attach the other Sub Hose (high-pressure) to the remaining Run Hose. Feed the hoses into the conduit (Fig. 15).

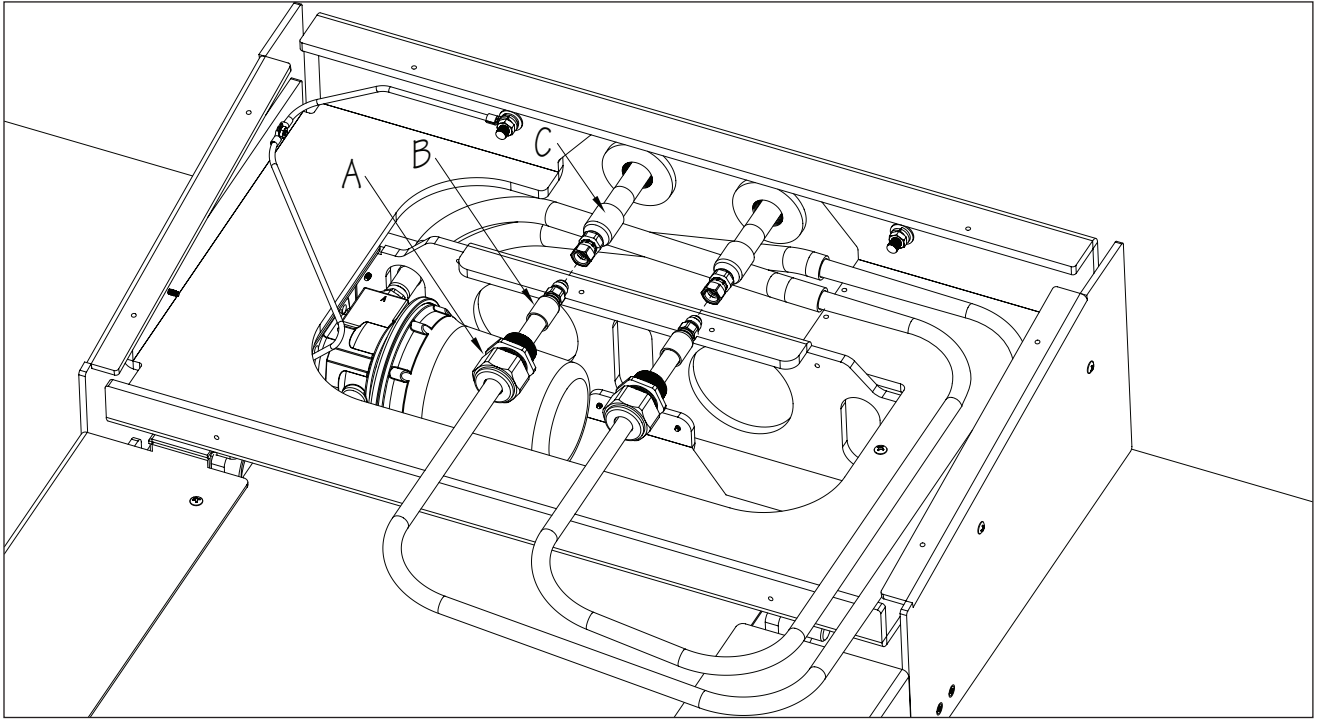


Fig. 15

4. Thread the Liquid Tight Fittings (A) into the Bushing Reducers and tighten the compression nuts. Secure Sub Hoses with Hose Clamps (B) as shown using the 3/4" (19mm) Phillips Truss Head Screws (C) (Fig. 16).

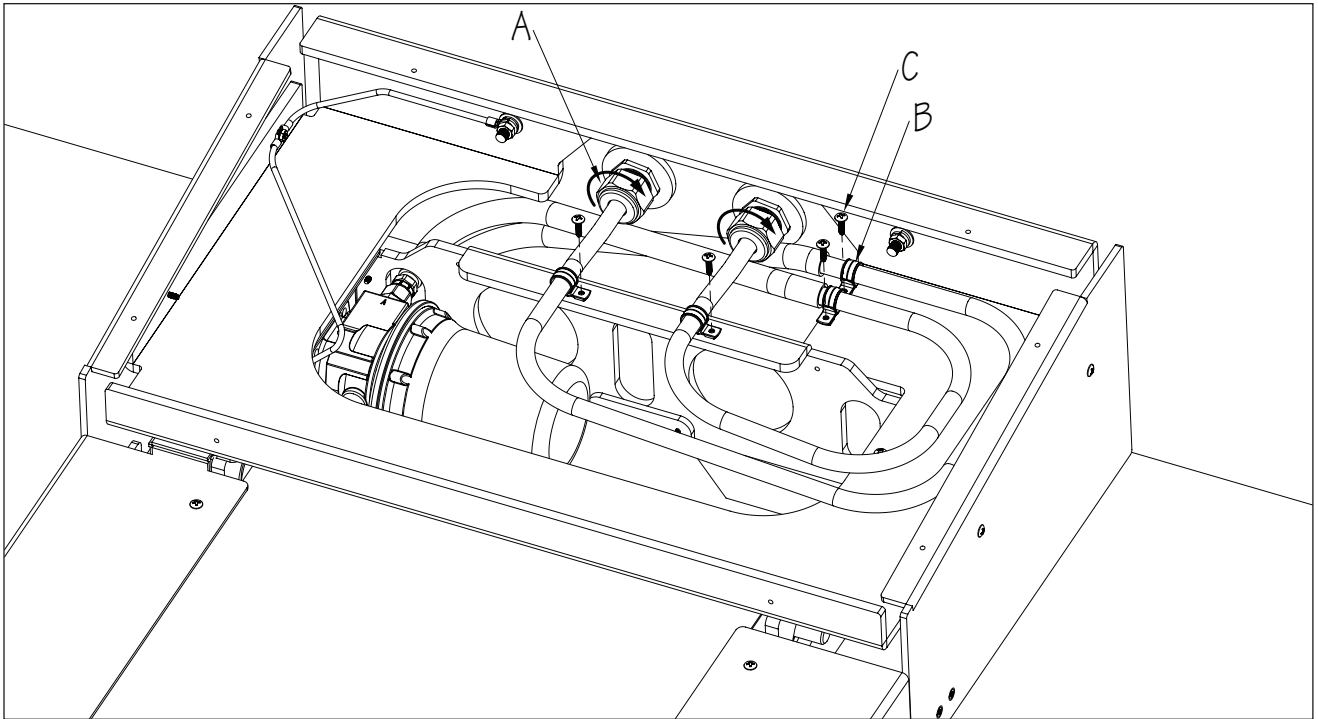


Fig. 16

5. Attach the Lower Cover (A) using the 1" (25mm) Phillips Truss Head Screws (B) (Fig. 17).

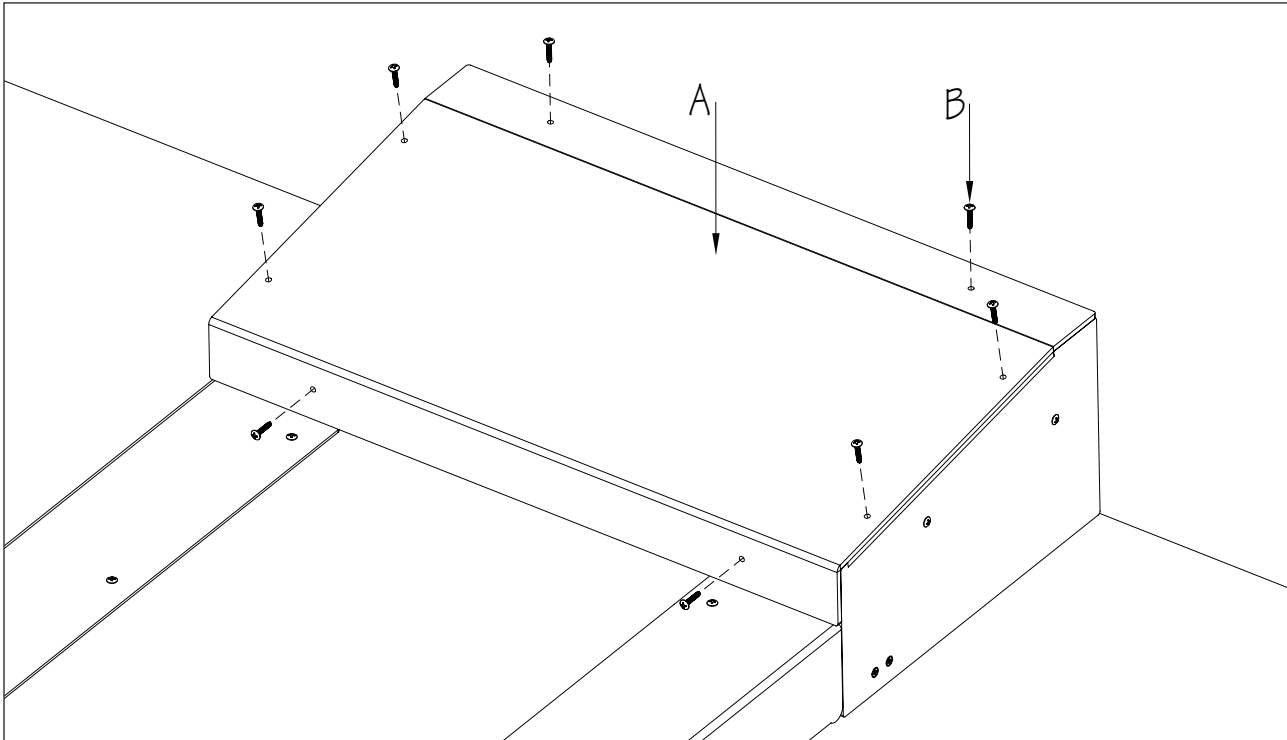


Fig. 17

6. Attach the Grab Bar (A) to the pool wall using the 1-1/4" (32mm) Hex Head Bolts (B). The bolts will thread into the Couplers or Rivet Nuts that were installed into the pool wall during the mounting kit installation. If being installed in a pool with a vinyl liner, apply silicone around the front and back of the mounting holes, in the flanges of the Grab Bar, prior to installing (Fig. 18).

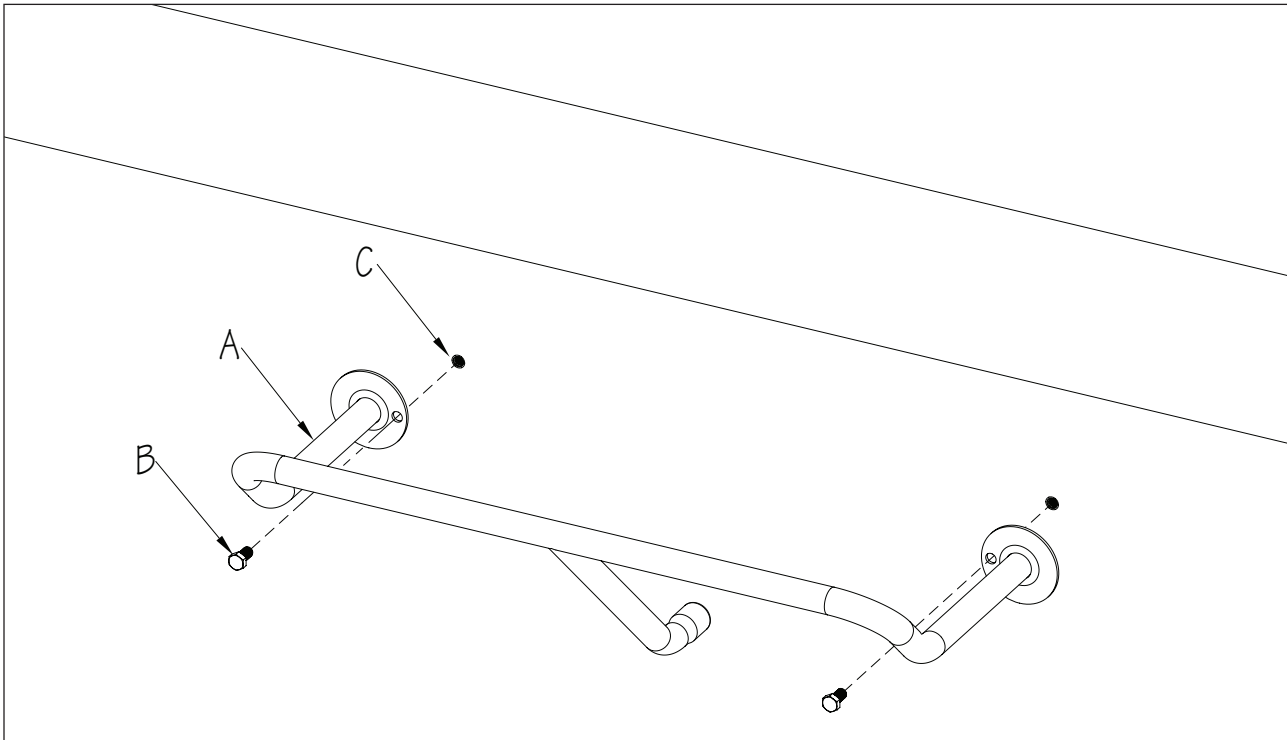


Fig. 18

7. Prior to filling the pool, it is necessary to perform a continuity test to ensure the Fastlane® Tread and Grab Bar are properly bonded. **Refer to Section 9 for detailed instructions.**

- 8. If the Fastlane® Swim is being installed, it should be mounted on the pool wall at this time. Refer to the Fastlane Swim Owner's Manual for detailed instructions (Fig. 19).

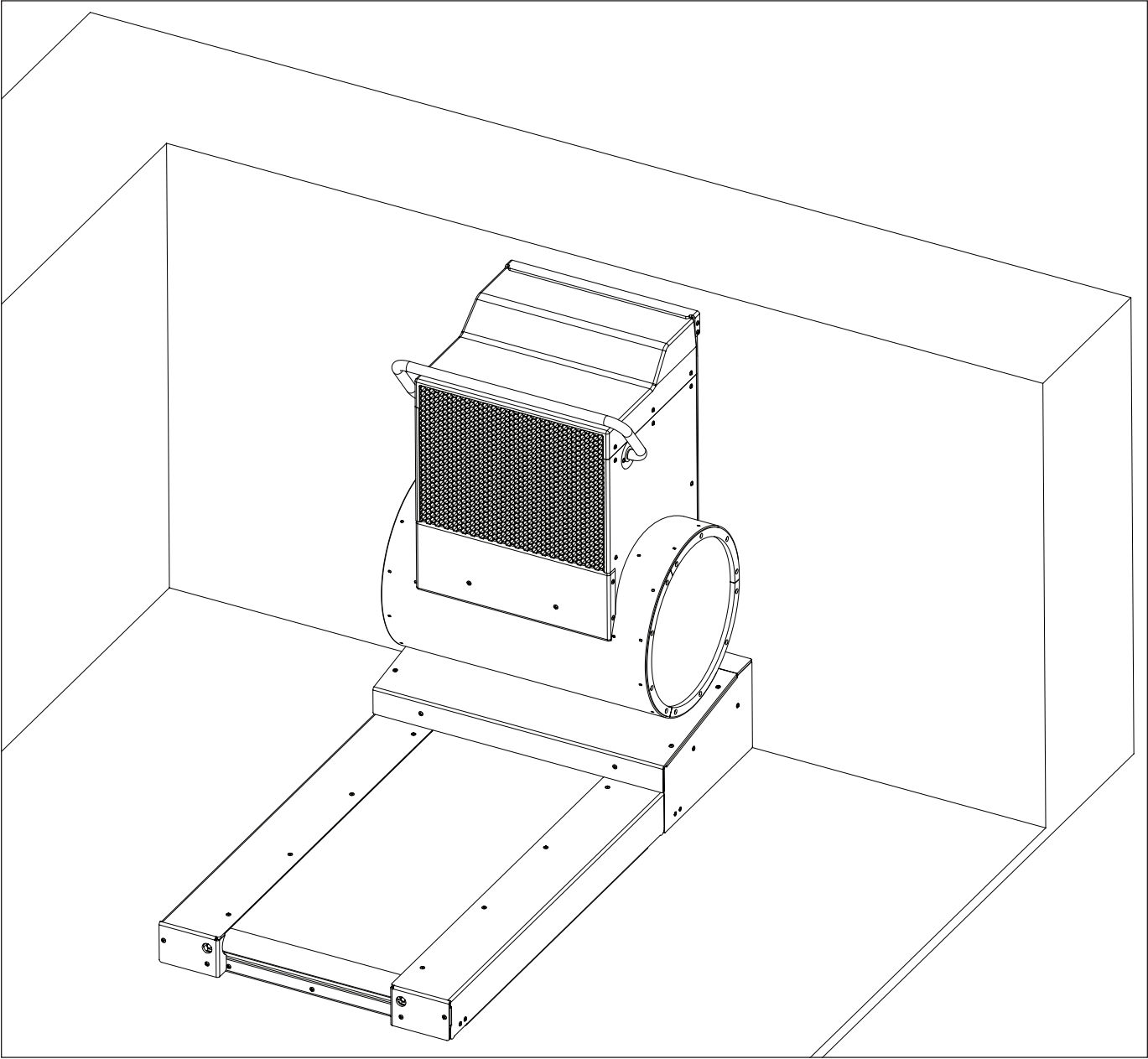


Fig. 19

## 7. Hydraulic Power Unit Installation

The Hydraulic Power Unit should be placed on a solid, level surface, preferably not on wet ground. If placing the unit outside, it is recommended that the optional Weather Guard (A) be purchased but should not be subject to driving rain (Fig. 20). If placing the unit indoors and at a level below the pool deck, such as a basement, a floor drain is mandatory to accommodate the unlikely event of a hole developing in the hydraulic hose creating a siphon. For ample ventilation, a minimum of 12" (30,5cm) air space must be provided on all sides. In addition, the power unit MUST be accessible for service and maintenance purposes.

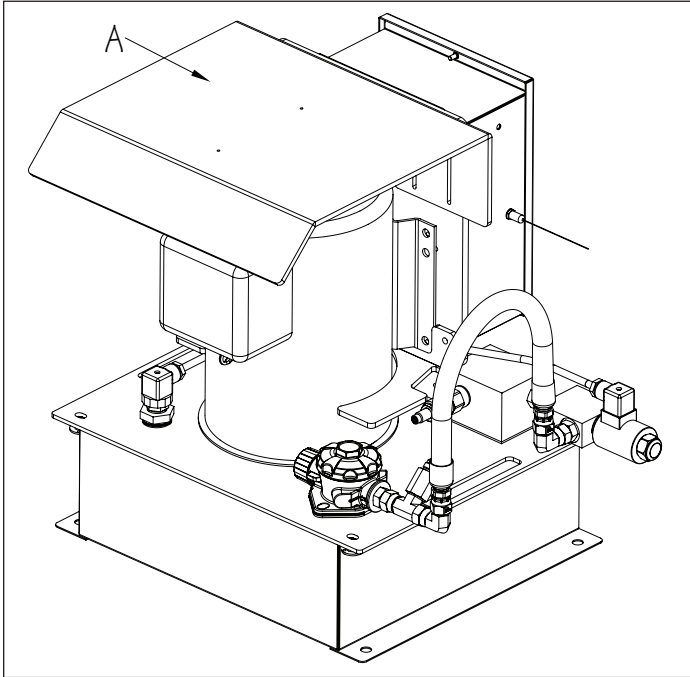


Fig. 20

### ANTENNA

Remove the Front Cover (A) of the power unit controller by removing the screws (B). Remove the Wireless Transmitters (C) and the Antenna (D). Attach the Antenna to the Antenna Connection (E) on the side of the controller (Fig. 21).

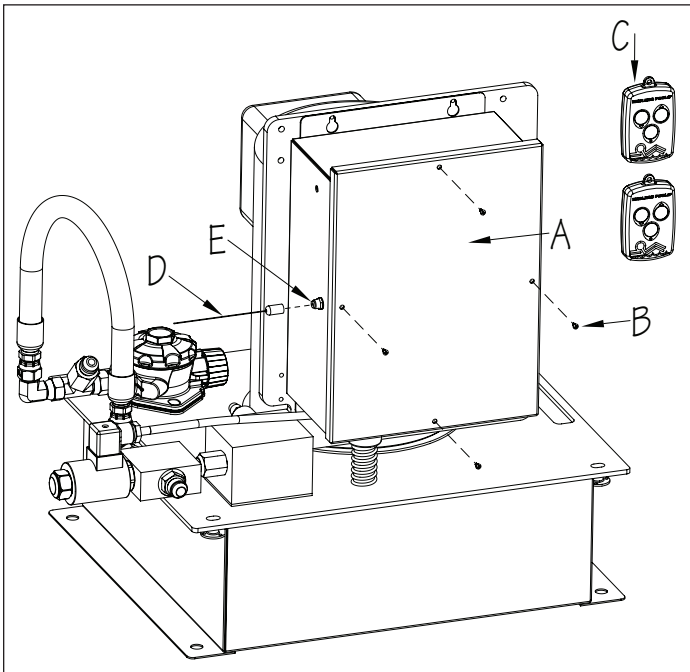


Fig. 21

## HYDRAULIC HOSE CONNECTIONS

Attaching the Hydraulic Run Hoses to the power unit is next. Remove the caps on the ports of the power unit. Attach the Low-Pressure Hose (A), hose with the red tape wrapped around the end, to the fitting attached to the Fill Cap (B). Attach the High Pressure-Hose (C) to the fitting on the Silver Manifold Block (D). Tighten the hoses firmly (Fig. 22).

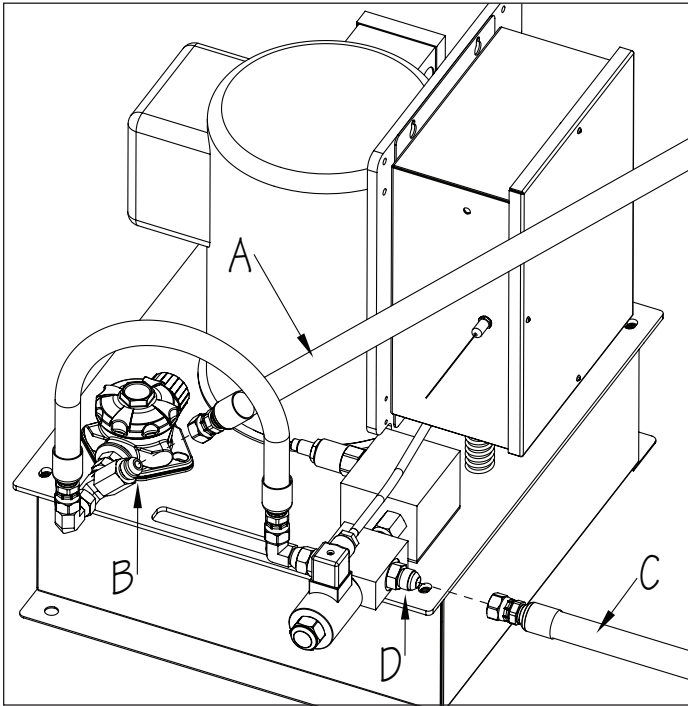


Fig. 22

## HYDRAULIC FLUID

Endless™ Pools supplies a special vegetable-based hydraulic fluid created for this equipment. DO NOT use a substitute hydraulic fluid. Any excess fluid should be retained for future use.

Remove the Fill Cap (A) and then remove the Oil Filter (B) by lifting it out of the fill opening (Fig. 23). Fill the reservoir to within 2" (5cm) of the Reservoir Lid (C). Once filled, replace the Oil Filter and ensure that it is seated properly before reinstalling the Fill Cap. Additional fluid has been provided if long run hoses were ordered and will be added to the reservoir during the initial start up.

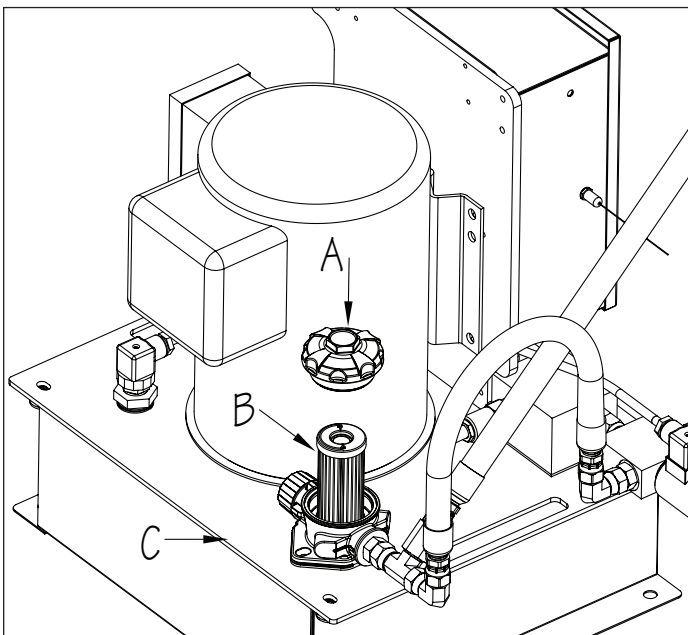


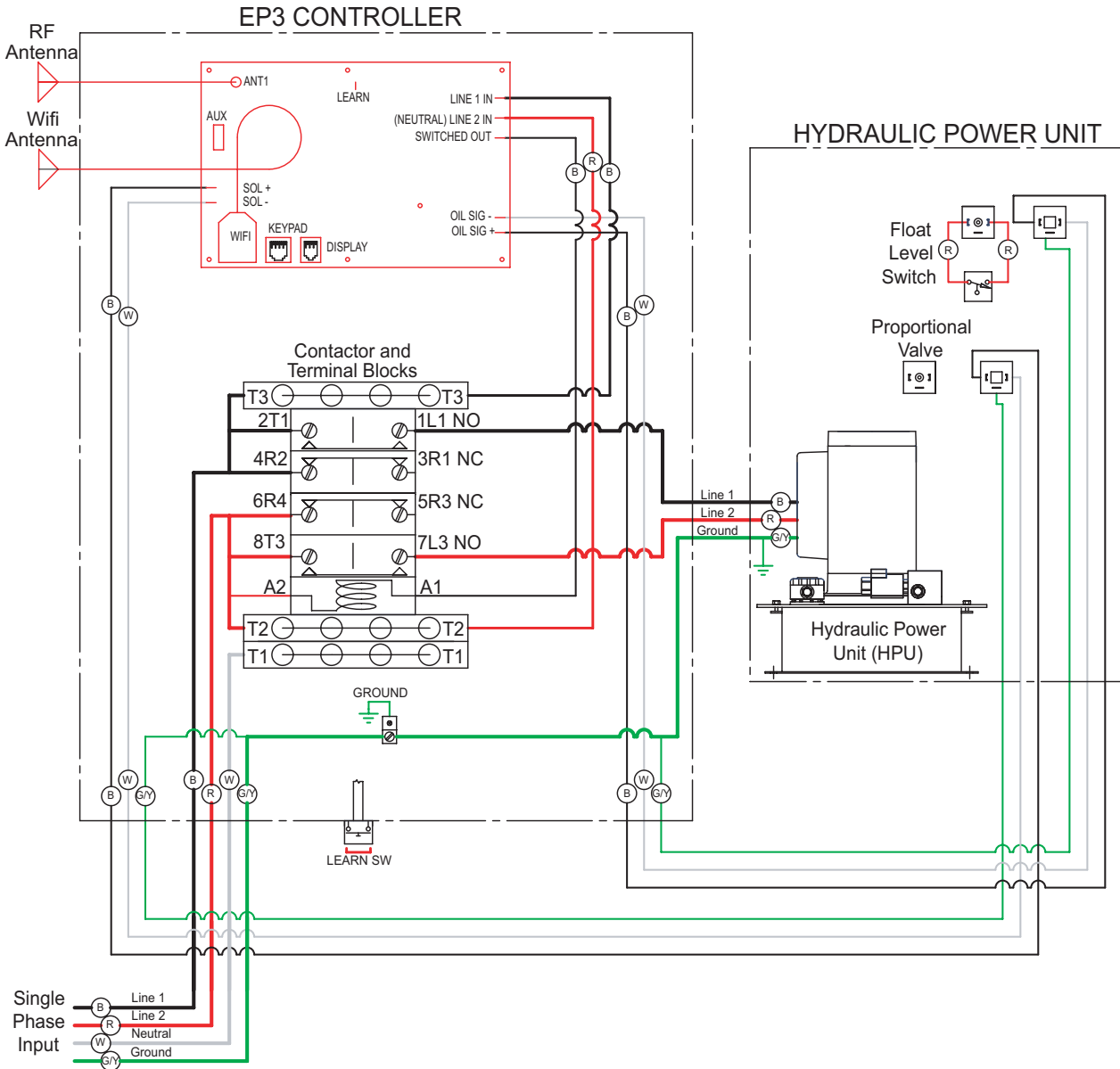
Fig. 23

## 8a. Electrical Requirements - 60Hz (U.S. and countries with a similar power supply)

ALL ELECTRICAL CONNECTIONS SHOULD BE MADE BY A LICENSED ELECTRICIAN.

**NOTE:** The following instructions are intended for **Single Phase** equipment. If **Three Phase** equipment was ordered, refer to the **Three Phase Equipment Supplemental Guide** at this time.

A Ground Fault Circuit Interrupter (GFCI) is required for this product. A GFCI is a device that shuts off an electrical circuit when it detects that electricity is flowing along an unintended path. The path could be through a person or water. The purpose of this device is to reduce the chance of electrical shock. The Hydraulic Power Unit requires one single phase 220v 30amp GFCI protected service.



## 8b. Electrical Requirements - 50Hz (U.K. and countries with a similar power supply)

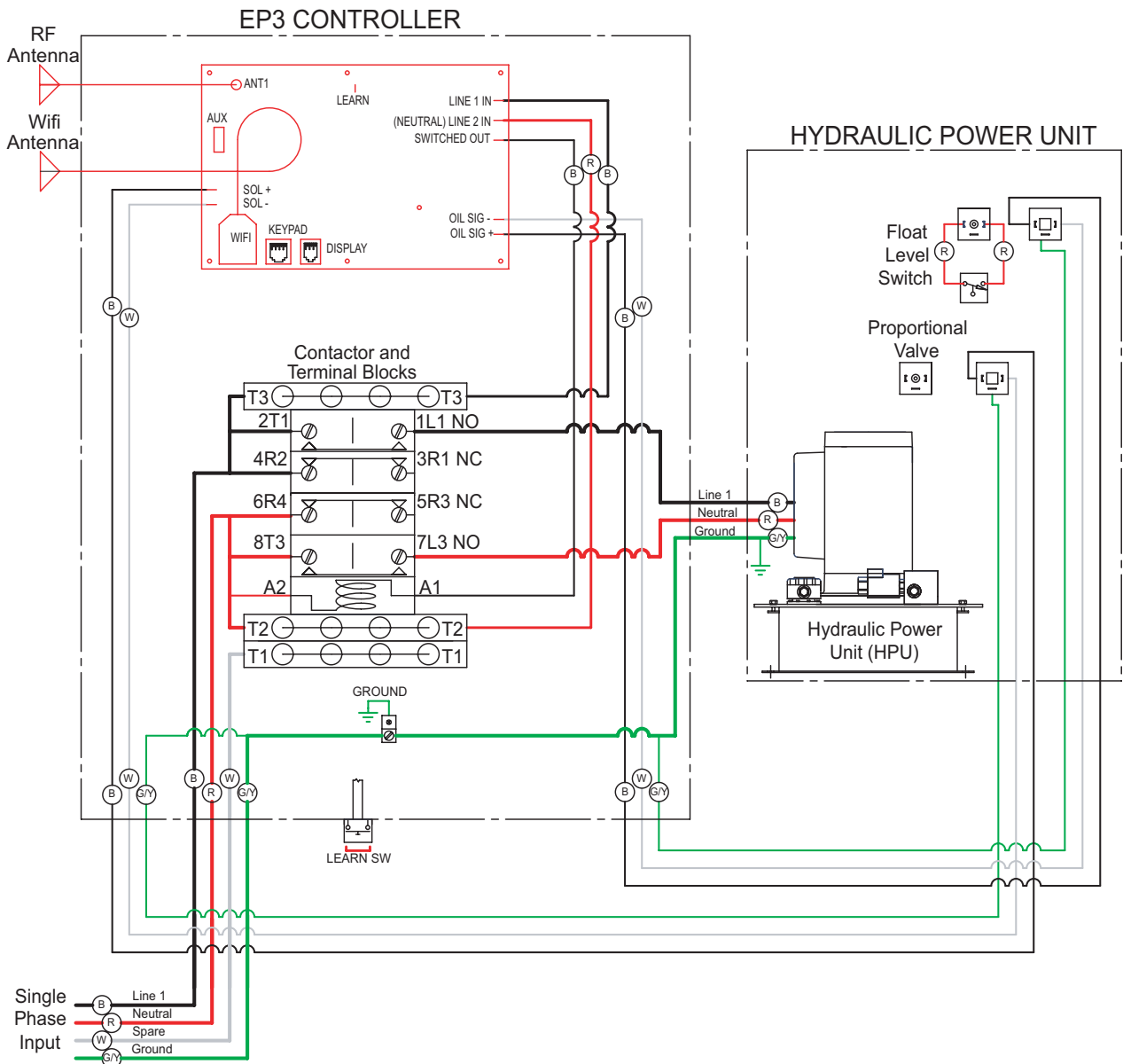
ALL ELECTRICAL CONNECTIONS SHOULD BE MADE BY A LICENSED ELECTRICIAN.

**NOTE:** The following instructions are intended for **Single Phase** equipment. If **Three Phase** equipment was ordered, refer to the **Three Phase Equipment Supplemental Guide** at this time.

A Residual Current Device (RCD) is required for this product. An RCD is a device that shuts off an electrical circuit when it detects that electricity is flowing along an unintended path. The path could be through a person or water. The RCD must have a rated residual operating current not exceeding 30mA. The purpose of this device is to reduce the chance of electrical shock. The Hydraulic Power Unit requires one single phase 230v 32amp RCD protected service. The MCB (breaker) for the Hydraulic Power Unit must be C-type, D-type, or motor rated.

United States wire color-coding is different than international color-coding. The wires have a colored sleeve to conform to the international color codes:

WIRE COLOR	US WIRE TYPE (60Hz)	INT. WIRE TYPE (50Hz)
BLACK with BROWN SLEEVE	HOT OR LIVE (120V)	HOT OR LIVE (220V)
RED with BLUE SLEEVE	HOT OR LIVE (120V)	NEUTRAL
GREEN with GREEN/YELLOW SLEEVE	GROUND	EARTH



## 9. Bonding Your Fastlane® Tread

Bonding is the joining of metal components in or around a pool and its associated equipment to bring them to the same electrical potential (equipotential). The purpose of bonding is safety. Bonding also prevents corrosion between different types of metal components. Pools generally contain various grades of stainless steel, copper, galvanized metal etc. in or around them. This includes metal light rings, ladders, rebar in concrete as well as pool equipment such as pumps, heaters, and pool controllers.

When two different types of metals are immersed in a conductive solution (pool water), they undergo what's called a galvanic reaction. The weaker metal (anode) will begin to dissolve; these particles will react with the conductive solution and coat the stronger metal (cathode). This will develop an electrical charge between the two metals called electrical potential and can be measured as voltage.

All metallic components outside the pool should be connected by a solid copper wire. This wire and all of the metal components form a pool's bonding grid. Bonding wires and connections may be readily visible in a pool's equipment area or on anything metal around the pool. Endless™ Pools uses a #8 solid insulated copper wire to bond the metal components of the Fastlane® Tread to the pool's bonding grid.

**SAFE:** All metallic components in or around the pool ARE connected with bonding wires. This reduces the chance of galvanic reactions and prevents the build-up of electrical potential between these components. This reduces the chance of a user receiving an electrical shock if they make contact with two metallic components in the pool at the same time.

**UNSAFE:** One or more metallic components in or around the pool ARE NOT connected with bonding wires. The unconnected components become either an anode or cathode, leading to corrosion and the development of electrical potential. The electrical potential IS DANGEROUS and can incapacitate a pool user.

The Endless Pools equipment is properly bonded when the Fastlane Tread, Hydraulic Power Unit, and power unit controller are tied into the pool's equipotential bonding grid.

**Refer to the Bonding Overview on the following page for detailed instructions.**

## BONDING OVERVIEW

The Fastlane® Tread and Hydraulic Power Unit **MUST** be tied into the pool's bonding grid. Refer to Figure 24 below.

1. All Fastlane Tread shipments include bonding hardware. When installing the Fastlane Tread in a gunite/concrete pool, bonding clamps are to be attached to the threaded rods of the Fastlane Tread and Grab Bar mounting kits, which are tied into the rebar grid of the pool. Before shooting gunite, a #8 solid copper wire **MUST** be attached to each bonding clamp and then attached to a bonding connection that's incorporated into the pool's bonding grid. For steel panel pools, the steel structure should be incorporated into the pools bonding grid.
2. When the Fastlane Tread is being mounted on the pool wall, the #8 solid copper wire, attached during the assembly of the unit, **MUST** be attached to the left threaded rod/threaded stud protruding into the pool. Making this connection will ensure that the metal components of the Fastlane Tread are connected to the pool's bonding grid.
3. Outside of the pool, the Hydraulic Power Unit and power unit controller **MUST** be tied to the pool' bonding grid with a #8 solid copper wire. This is typically done by extending the bonding wire from the existing pool equipment (heater, pump, etc.) and attaching to the bonding connections located on the power unit and power unit controller.
4. The bonding grid should be verified by testing the continuity between all metallic components around the pool. **Refer to the Bonding Verification procedure on the following page.**

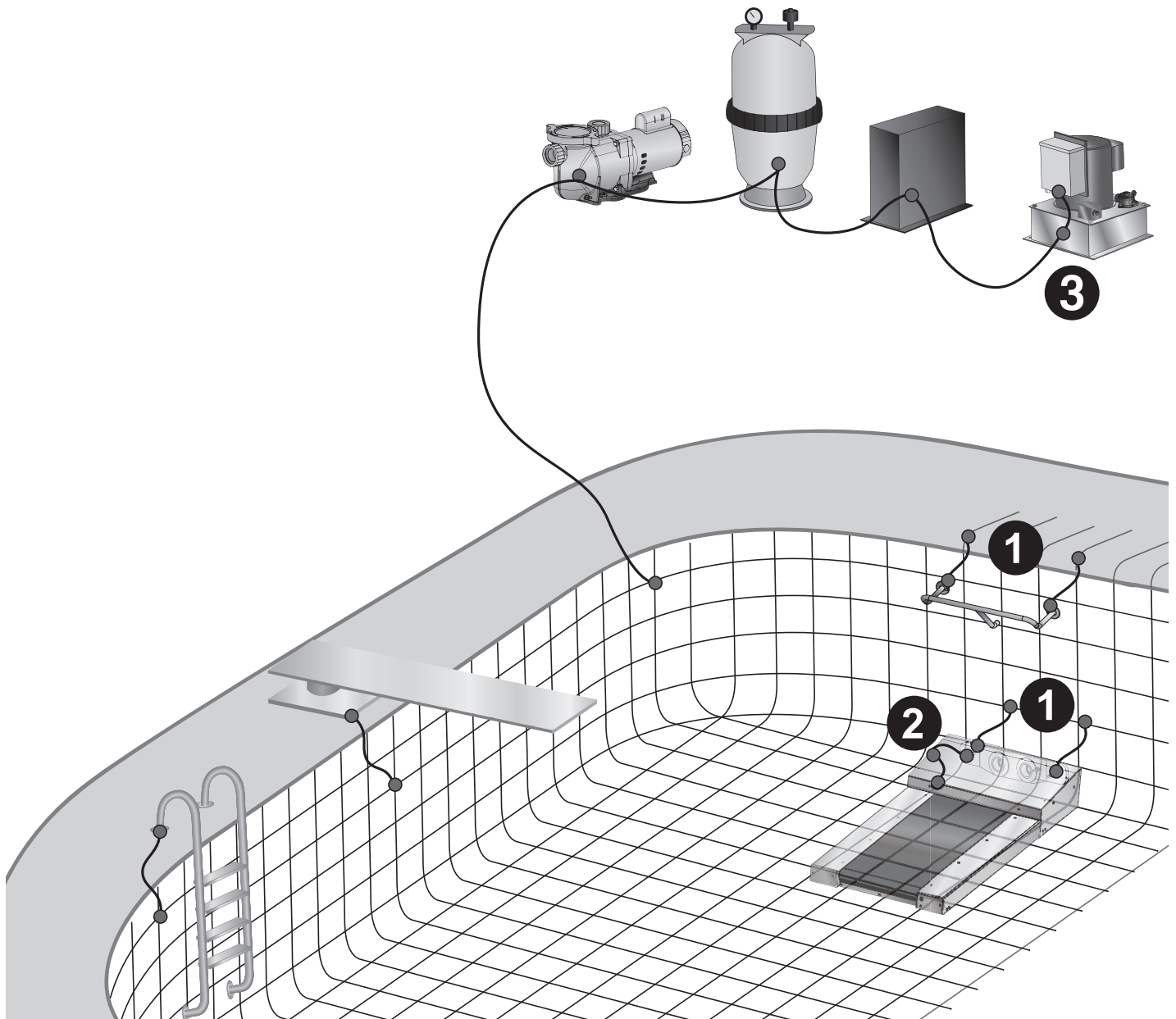


Fig. 24

## BONDING VERIFICATION

### REQUIRED TOOLS:

- Multimeter
- Roll of Test Wire (common 14 - gauge wire will work)
- Alligator Clips

### 1. ZERO OUT (or calibrate) THE METER:

Attach one of the multimeter leads to one end of the test wire. Attach the other lead to the other end of the test wire. The meter will display a measurement (it is measuring the resistance of the test wire). Use the calibration dial or button on the meter to zero out the meter. You are now ready to begin the testing.

### 2. TESTING PROCEDURE:

- a. Using an alligator clip, attach one end of the test wire to an exposed bonding wire at the equipment pad. Unroll the amount of necessary wire to reach the bonding connection in the Fastlane® Tread. This connection is located on the left threaded rod/threaded stud used to mount the Fastlane Tread to the pool wall under the End Cover (Refer to Figures 13 and 14).
- b. Connect the other end of the test wire to one of the leads of the multimeter using another alligator clip. Use the other lead of the meter (without the alligator clip) to take readings of the various metal components by touching them. Test both the threaded rods/threaded studs used to mount the Fastlane Tread and the Grab Bar. See test results below.
- c. Take the end of the wire used in step b above and perform the same tests at the Hydraulic Power Unit and power unit controller to ensure they are properly bonded. See test results below.

### 3. TEST RESULTS:

**The reading on the multimeter should be between 0 and 1 ohms. Higher readings or "OL" (open line) indicate that the component you are testing is not properly bonded. ACTION IS REQUIRED!**

## 10. Using Your Fastlane® Tread

### INITIAL START UP AND OPERATION

The Wireless Transmitter is used to operate the Fastlane® Tread. Turn on the Hydraulic Power Unit by pressing and holding the On/Off Button (A). Press and hold the Faster Button (B) to increase the speed of the Fastlane Tread. Press and hold the Slower Button (C) to decrease the speed. Press and hold the On/Off Button to turn the unit off (Fig. 25).

**IMPORTANT NOTE:** If the power unit turns off automatically when running it for the first time, additional hydraulic fluid is needed. Turn off power to the breaker and add hydraulic fluid so that the fluid level is within 2" (5cm) of the reservoir lid. Restore power and wait approximately two minutes for the controller to reset before turning the unit on to test it.

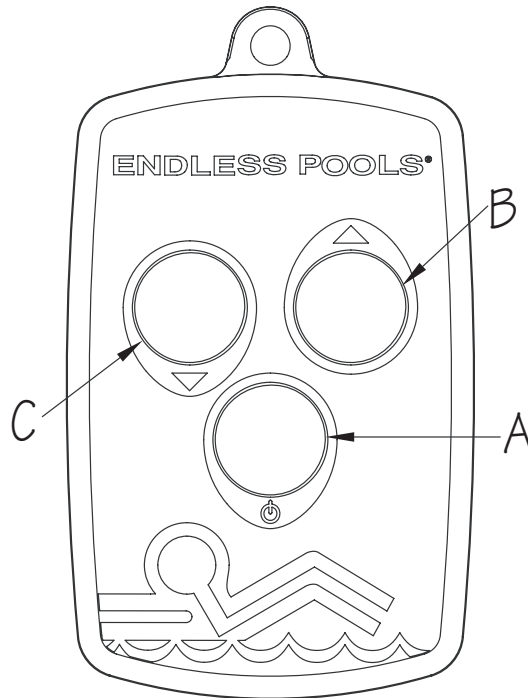


Fig. 25

### USER'S GUIDE

Center yourself on the belt of the Fastlane Tread and turn the unit on. The treadmill will always start at its lowest speed. Increase the speed to a comfortable level for your needs. When changing speed, you must press and hold the buttons on the transmitter, then wait a few seconds for the speed to adjust.

The power unit controller is equipped with a built-in timer, shutting the unit off after 30 minutes. Turning the unit back on will reset the 30 minute timer. If using the optional Fit@Home™ app, the duration of the workout will override the built in 30 minute timer.

## II. Product Installation Information

The product installation information MUST be completed by the installer prior to using the product.

1. Fill out the installation information below:

<b>MONTH/YEAR INSTALLED</b> _____
-----------------------------------

2. Hand the Owner's Manual containing the above information to the customer to be stored with other important pool related documentation.
3. Included on the Hydraulic Power Unit controller is a Product Information Label containing the specifications of the Endless Pools product that was purchased. Refer to the one-page Endless Pools Product Information Label Document D12002 for detailed instructions.

## 12. Fastlane® Tread Maintenance

SANITATION	ACTIONS
CHLORINE	<p><b>HYDRAULIC MAINTENANCE</b></p> <ul style="list-style-type: none"> <li>• Replace hydraulic fluid after 500 hours of use and when replacing the underwater hydraulic motor</li> <li>• Replace oil filter whenever the hydraulic fluid is replaced</li> <li>• <b>After 6 years of operation, replace underwater hydraulic motor and drive belt of treadmill</b></li> <li>• While replacing underwater hydraulic motor, inspect the submersible hydraulic hoses. Replace hoses if necessary.</li> </ul> <p><b>WATER QUALITY MAINTENANCE</b></p> <ul style="list-style-type: none"> <li>• pH must be maintained between 7.4-7.8</li> <li>• Total Alkalinity must be maintained between 80-120ppm</li> <li>• Total dissolved solids must be below 3,000ppm</li> </ul> <p><b>GENERAL MAINTENANCE</b></p> <ul style="list-style-type: none"> <li>• Wipe the stainless steel grab bar with a scouring pad to remove any corrosion</li> </ul>
SALT-CHLORINE	<p><b>Placing the Fastlane Tread in a pool using a salt-chlorine generator creates an increased risk of a hydraulic system failure and oil leaks! It is imperative that this maintenance is followed!</b></p> <p><b>HYDRAULIC MAINTENANCE</b></p> <ul style="list-style-type: none"> <li>• Replace hydraulic fluid after 500 hours of use and when replacing the underwater hydraulic motor</li> <li>• Replace oil filter whenever the hydraulic fluid is replaced</li> <li>• <b>After 2 years of operation, replace underwater hydraulic motor and drive belt of treadmill</b></li> <li>• <b>Replace submersible hydraulic hoses when replacing the hydraulic motor</b></li> </ul> <p><b>WATER QUALITY MAINTENANCE</b></p> <ul style="list-style-type: none"> <li>• pH must be maintained between 7.4-7.8</li> <li>• Total Alkalinity must be maintained between 80-120ppm</li> <li>• Total dissolved solids must be below 3,000ppm</li> <li>• Salt content must be below 4,000ppm</li> </ul> <p><b>CATHODIC PROTECTION MAINTENANCE</b></p> <ul style="list-style-type: none"> <li>• Inspect the sacrificial zinc anode monthly and replace anode when it becomes half its original size</li> </ul> <p><b>GENERAL MAINTENANCE</b></p> <ul style="list-style-type: none"> <li>• Wipe the stainless steel grab bar with a scouring pad to remove any corrosion</li> </ul>



Endless™ Pools  
1601 Dutton Mill Rd  
Aston, PA 19014-2931  
(800) 910-2714  
[www.myendlesspool.com](http://www.myendlesspool.com)



**Intertek**

D12008\_en 0825  
©2025 Wellness Marketing Corporation